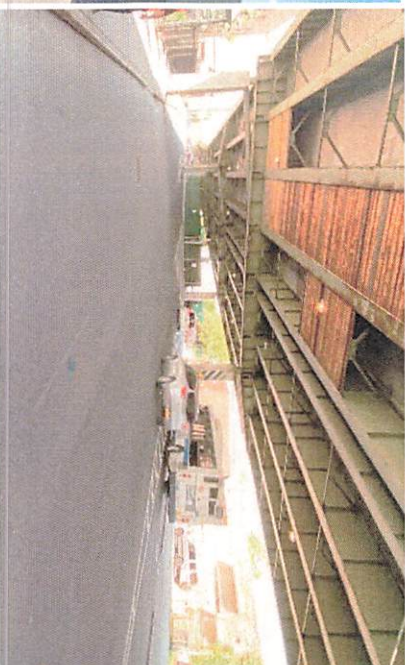




Department of Transportation

May 4, 2023
Attachment #1

NY State Department of Transportation
Bridge Rehabilitation of Brooklyn-Queens
Expressway Viaduct – over Laurel Hill Boulevard,
Between 47th Street and 58th Street, Queens NY



Community Board 2 Presentation

PIN: X731.52

Bridge Rehabilitation of Brooklyn-Queens Expressway (I-278)

Viaduct over Laurel Hill Boulevard, Between 47th Street and

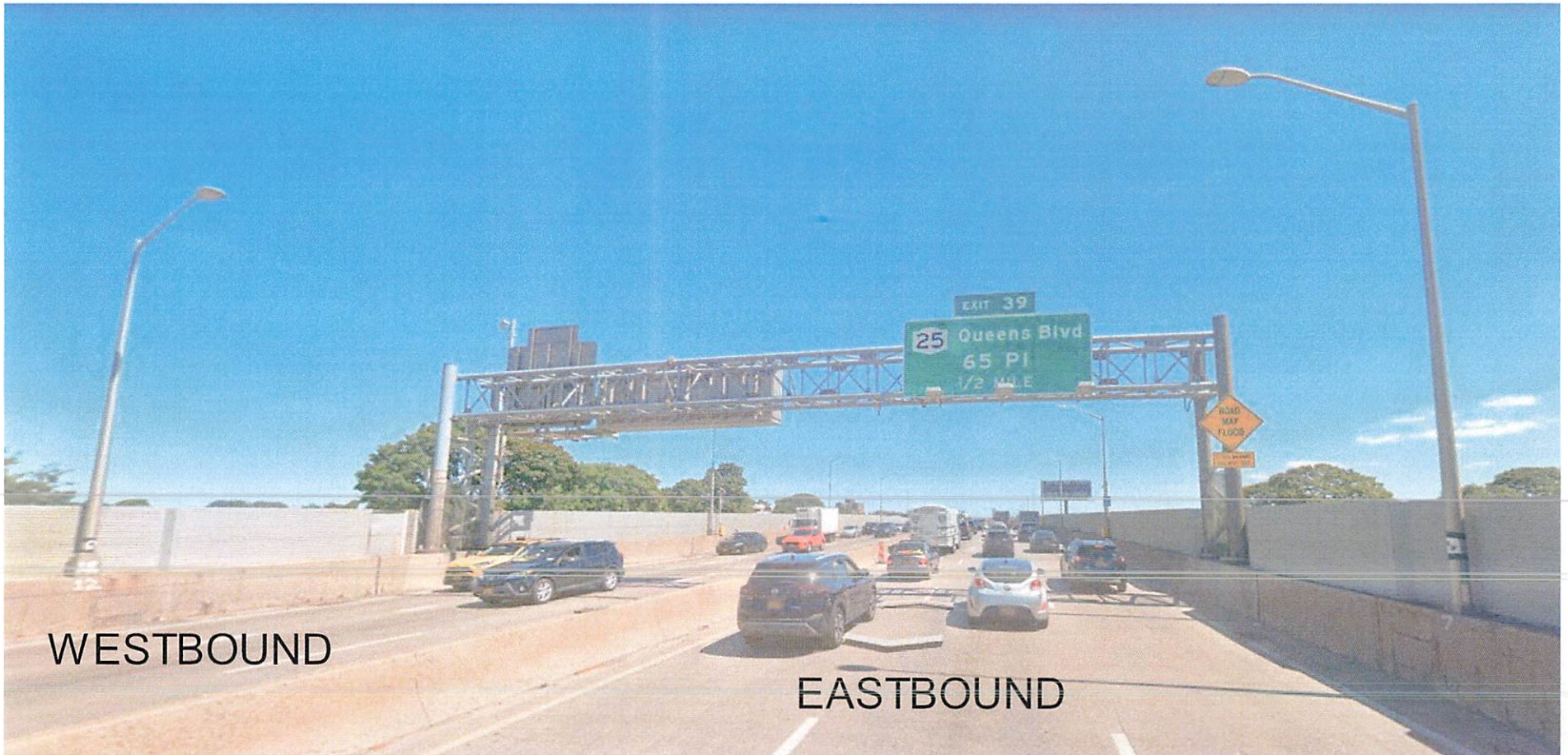
58th Street Queens, NY

May 2, 2023

PROJECT LOCATION / LIMITS

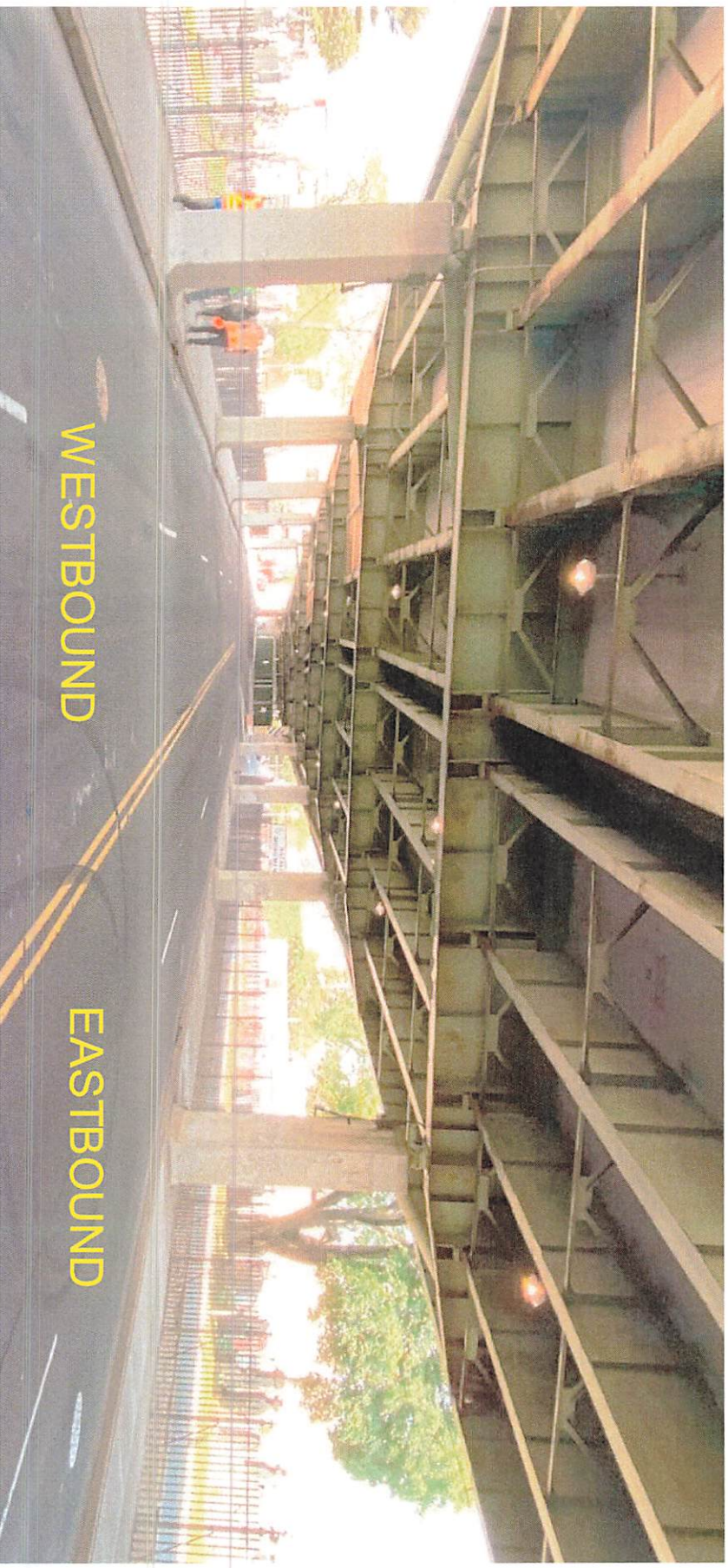


EXISTING BROOKLYN QUEENS EXPWY OVER LAUREL HILL BLVD



Brooklyn Queens Expwy
3 lanes in each direction

LAUREL HILL BLVD UNDER BROOKLYN QUEENS EXPWY



Laurel Hill Blvd.
2 lanes in each direction

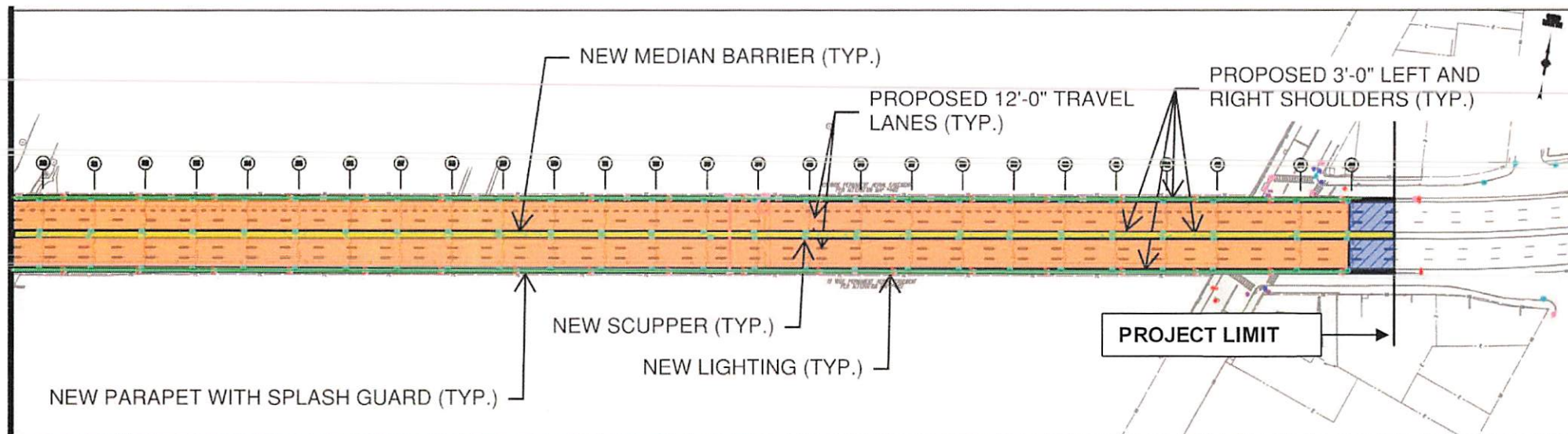
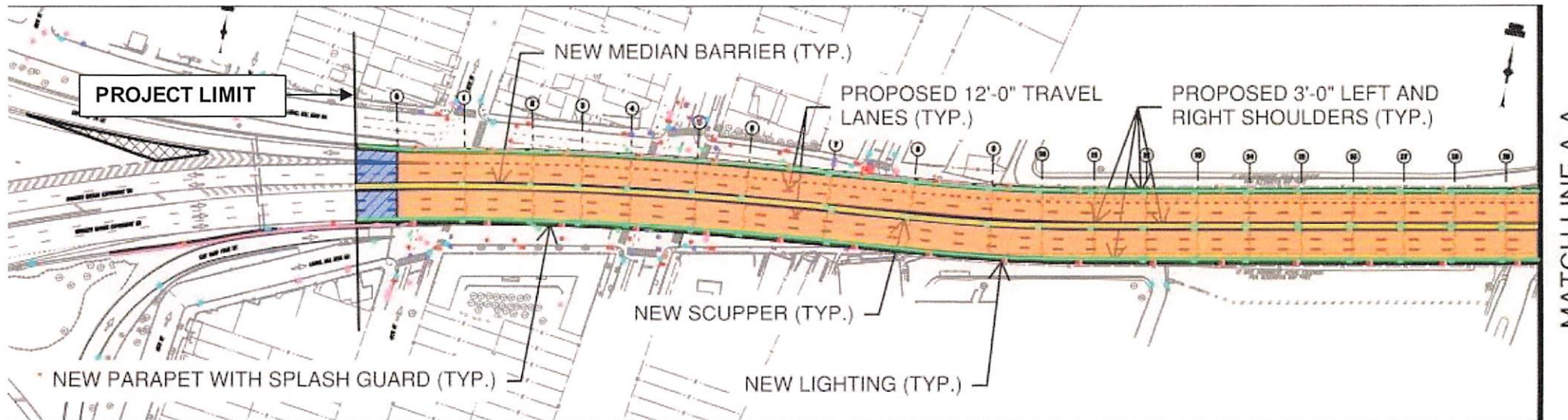
PROJECT PURPOSE

- Improve the overall condition of the BQE viaduct structure and extend its service life.
- Improve Safety & Roadway Geometry.
 - Provide geometric improvements to lane widths, cross slope, superelevation and shoulders.
 - Provide bridge parapets and median barrier that meet current design standards.
 - Improve drainage.

PROJECT SCOPE

- Concrete Deck Replacement
- Repair Steel Superstructure and Substructure
- New Median Barrier and Parapets
- New Roadway and Underdeck Lighting
- New Drainage Scuppers and Downspouts
- New Signing
- New Striping
- Bridge Painting

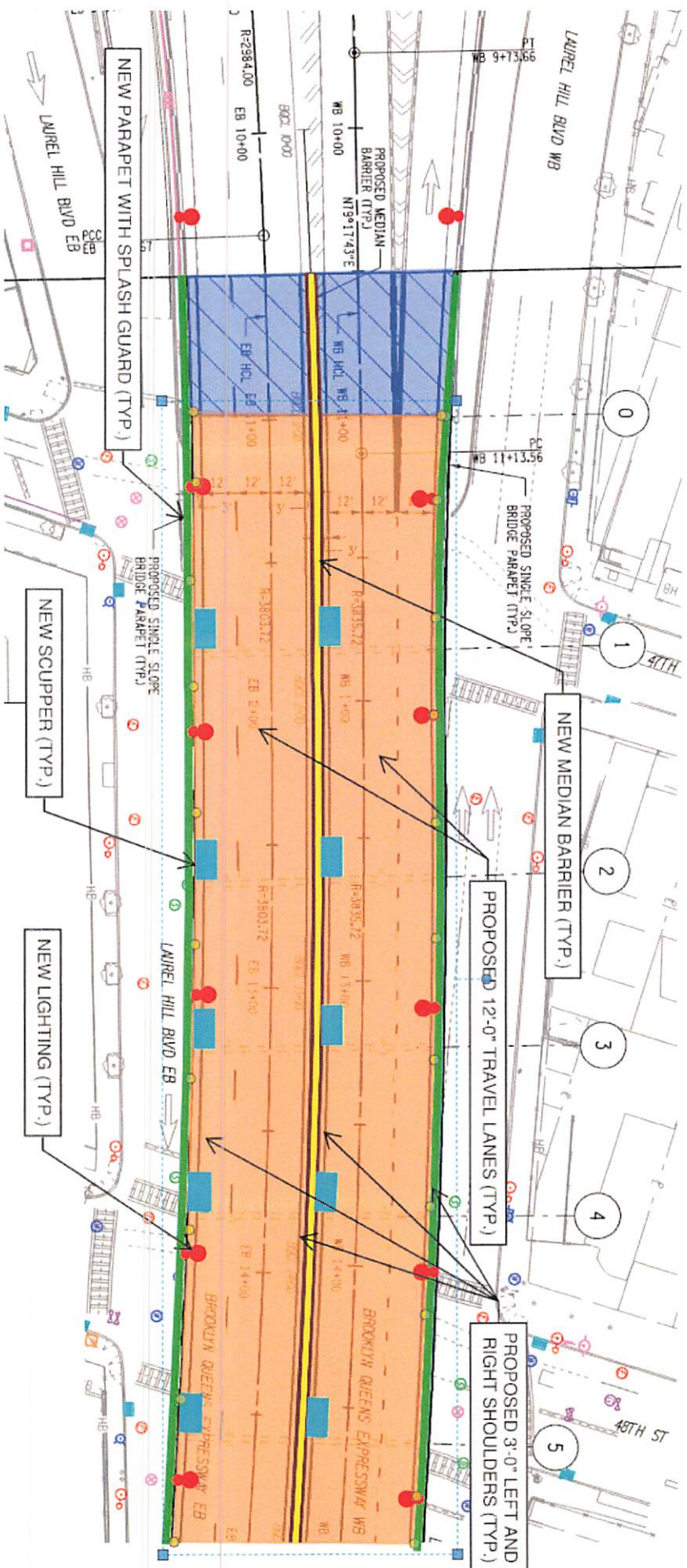
PROJECT SCOPE – PLAN VIEW



LEGEND:

	PROPOSED CONCRETE DECK		NEW MEDIAN BARRIER
	PROPOSED MILLING AND OVERLAY		NEW SCUPPER
	NEW PARAPET WITH SPLASH GUARD		NEW LIGHTING

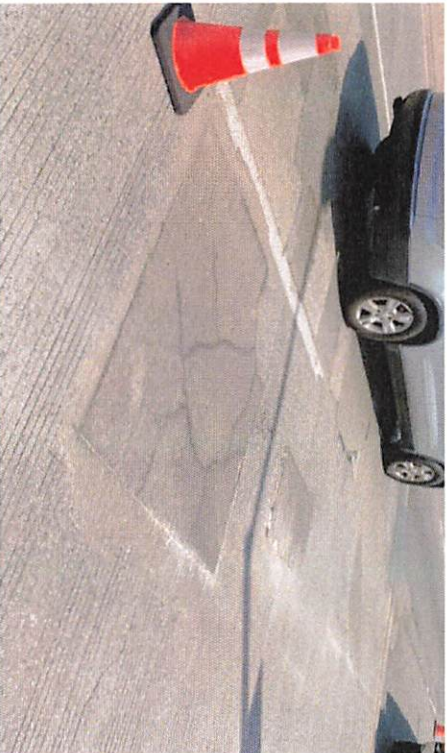
PROJECT SCOPE - ENLARGED PLAN VIEW



LEGEND:

	PROPOSED CONCRETE DECK		NEW MEDIAN BARRIER
	PROPOSED MILLING AND OVERLAY		NEW SCUPPER
	NEW PARAPET WITH SPLASH GUARD		NEW LIGHTING

PROJECT NEED



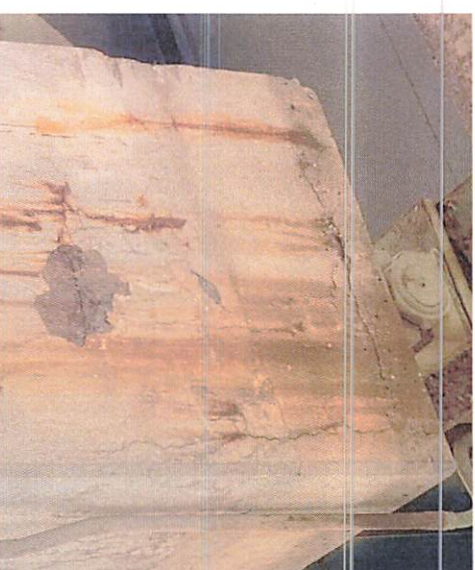
Replace Concrete Deck



Repair Corroded Steel Superstructure

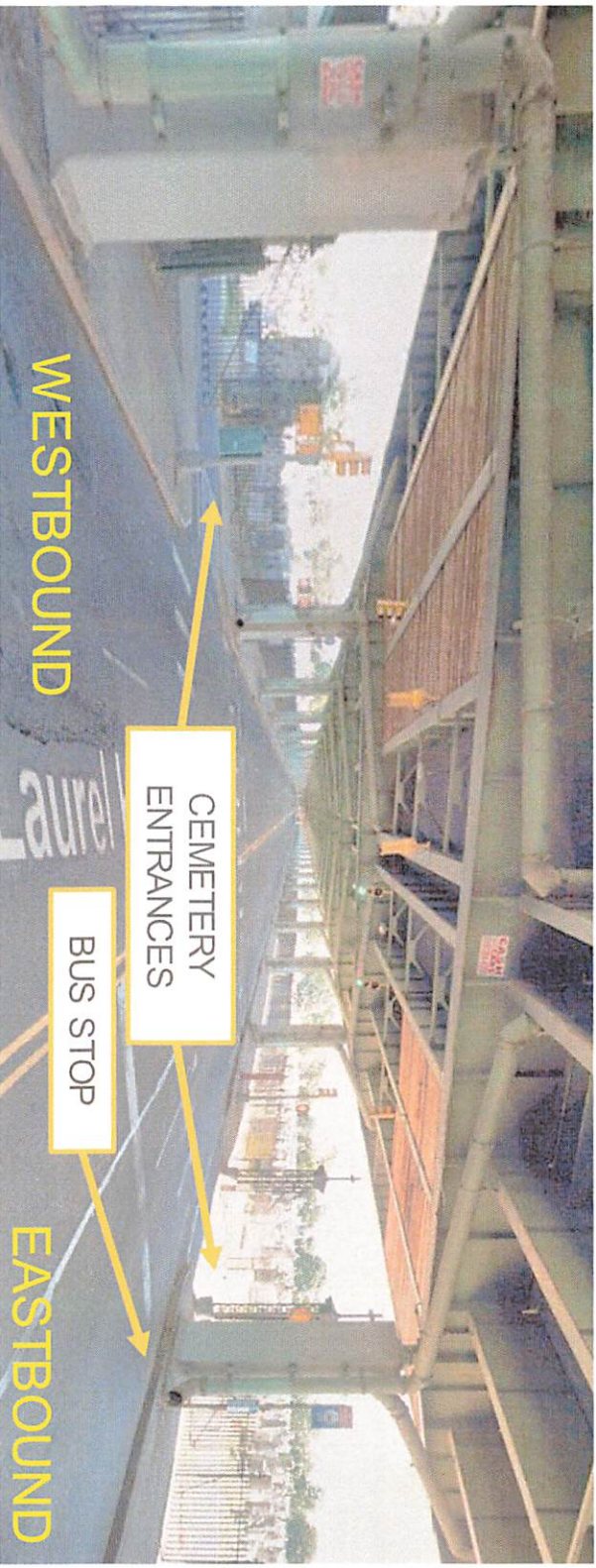


Replace Expansion Joints

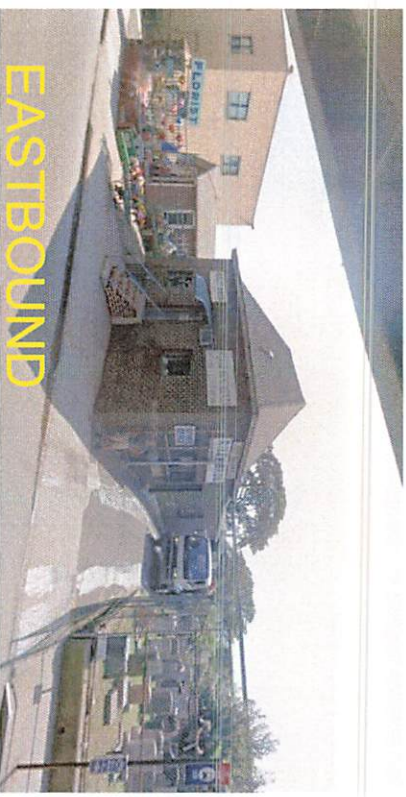


Repair Column Concrete Encasements

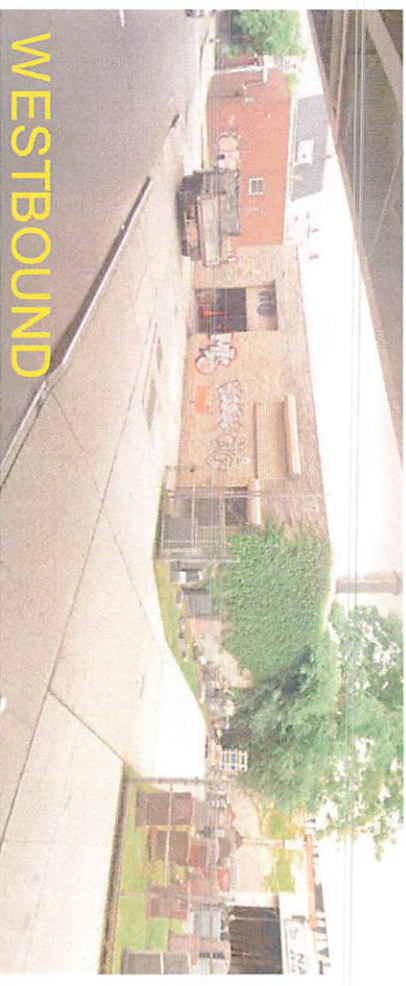
CALVARY CEMETERY, PUBLIC BUS ROUTE, & LOCAL BUSINESSES ACCESS TO BE MAINTAINED DURING CONSTRUCTION



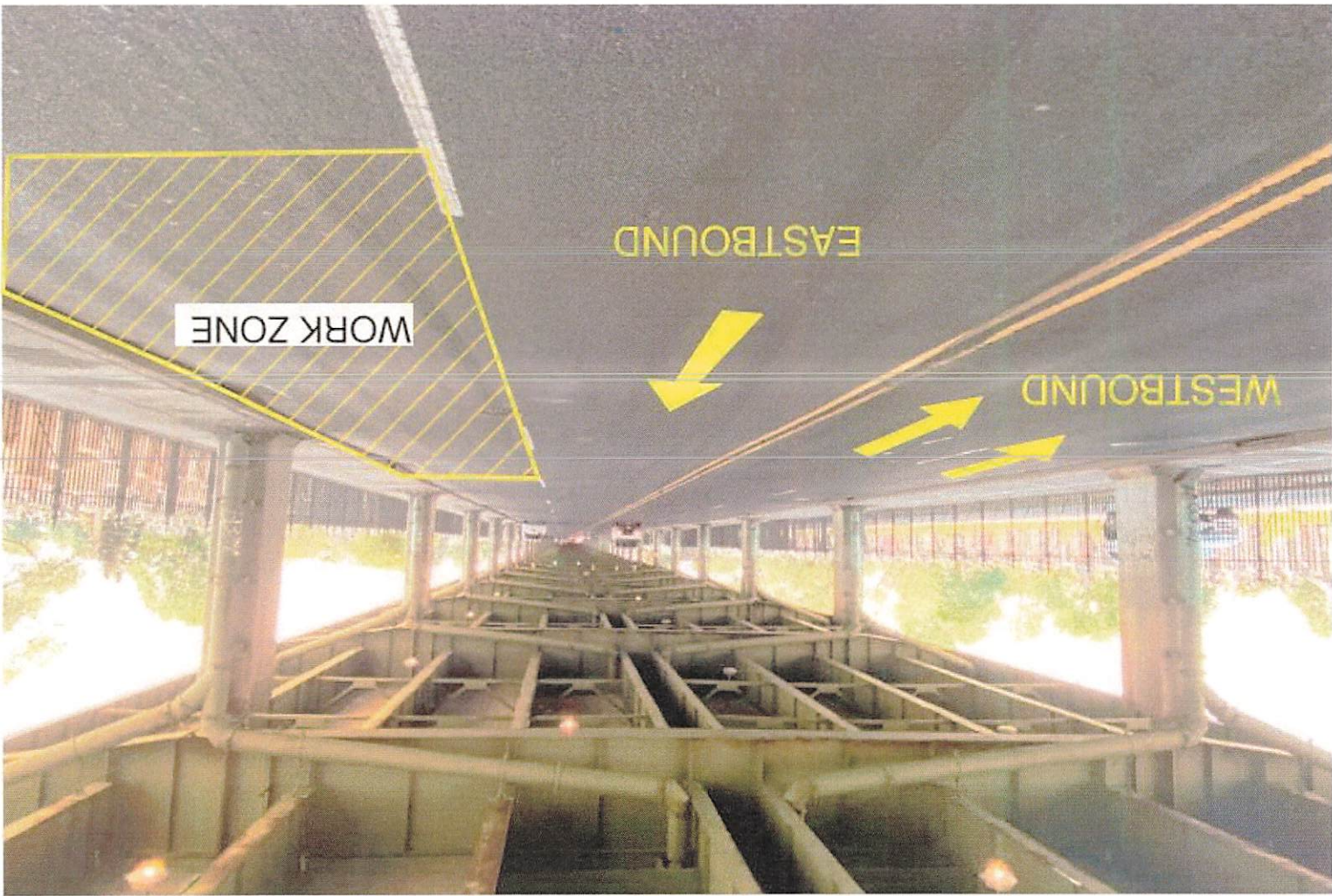
Laurel Hill Blvd. Cemetery and Bus route access



Laurel Hill Blvd. local business access



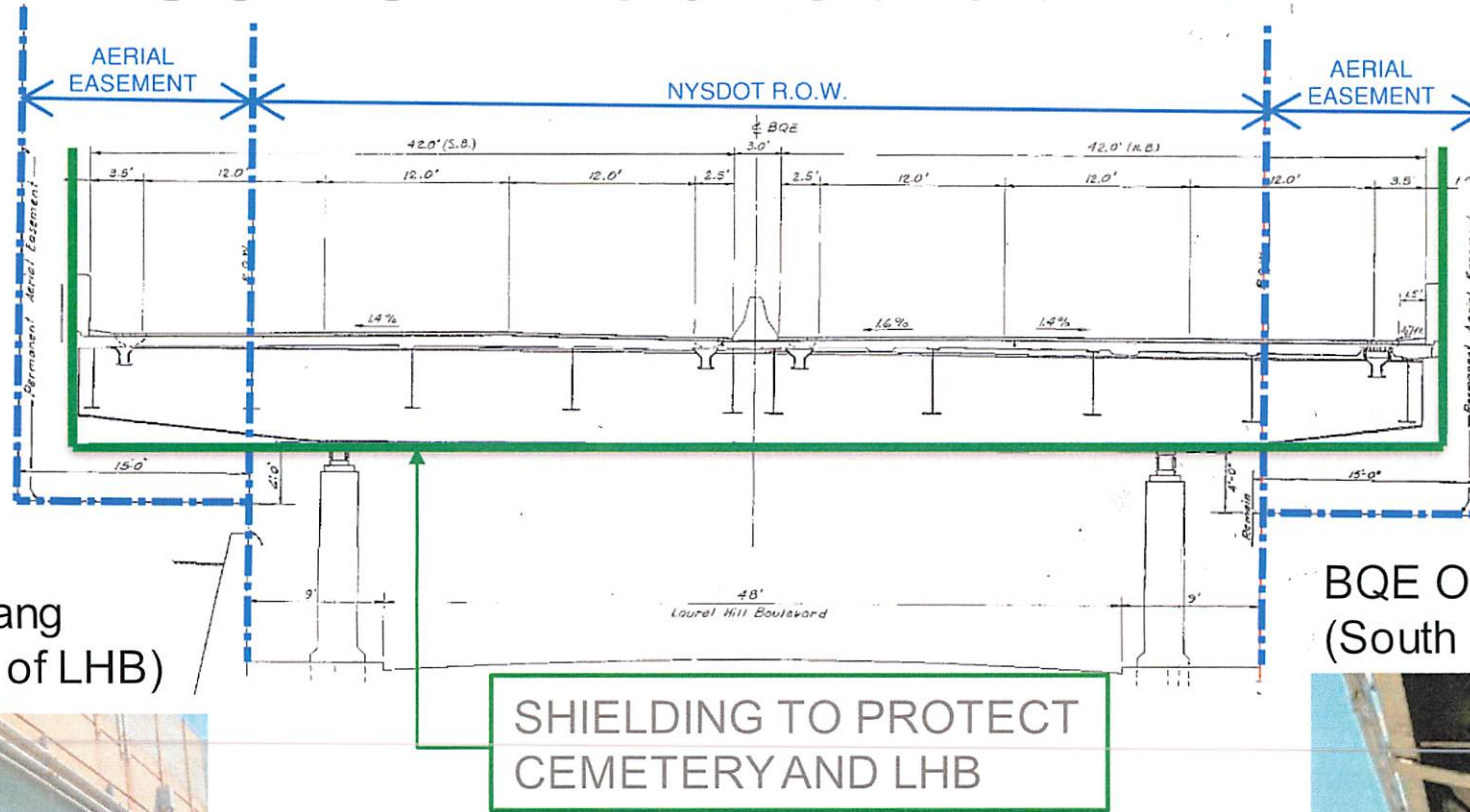
Laurel Hill Blvd. local business access



- Maintain minimum of one lane in each direction

WORK ZONE TRAFFIC CONTROL LAUREL HILL BLVD

CONSTRUCTION ACCESS CONSIDERATIONS



BQE Overhang
(North Side of LHB)

BQE Overhang
(South Side of LHB)

SHIELDING TO PROTECT
CEMETERY AND LHB

- No construction access from sides of viaduct
- Deck demolition and construction – all access from BQE
- Daytime work for most operations
- Nighttime work for Overhead Sign Structure replacement



CONSTRUCTION STAGING

- Maintain 3 lanes in the peak hour direction (WB for AM & EB for PM)
- Maintain connection from WB BQE to WB LIE
- Access for emergency vehicles to be provided 24/7
- Access to Calvary Cemetery and businesses on Laurel Hill Blvd. to be maintained
- Appropriate advance work zone traffic control signage and portable variable message signs will be provided

LIGHTING AND INTELLIGENT TRANSPORTATION SYSTEMS WORK OVERVIEW

Lighting:

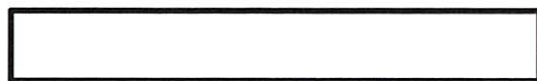
- Replace existing light poles along north and south sides of BQE viaduct.
- Replace existing underdeck lighting.
- Provide new LED luminaires.
- Provide temporary lighting during construction.

Intelligent Transportation Systems:

- Relocate existing Intelligent Transportation Systems conduits.

PROJECT SCHEDULE

- ***Preliminary Design Completion – Spring 2023***
- Final Design Start – Summer 2023
- Bid Opening/ Letting – Spring 2025
- Construction Start – Summer 2025
- Construction Completion – Summer 2027



Denotes Current Phase

QUESTIONS?