

# Hunters Point South Ferry Landing Alternatives Analysis Study Update

May 25, 2023



# NYC Ferry Overview

## Current System Features

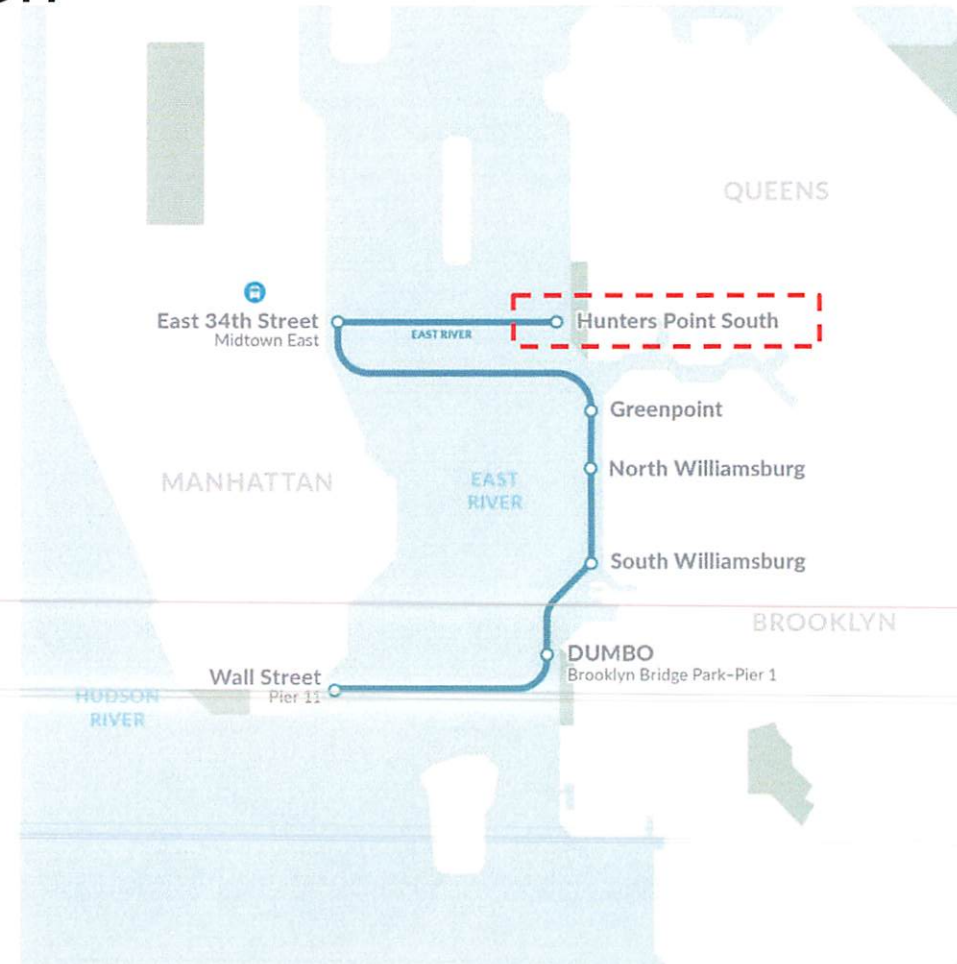
- 7-day, year-round service
- 6:00 AM - 10:30 PM
- Peak service headways 20-60 min
- Fare is \$4.00 single trips, \$2.75 multi-trips and \$1.35 NYC Ferry Discount Program trips
- Passenger ferries with 150, 350 pax capacity
- Mobile ticketing & real-time service alerts
- NYC Ferry Forward plan announced Summer 2022
  - More equitable fares
  - Financially sustainable system



# Updated Ridership Information

- Originally on the pilot East River Ferry service started in 2011, incorporated to NYC Ferry in 2017
- In August 2020, HPS became the start/end stop on the East River route to alleviate over-capacity issues and address the single slip constraints.
- Tremendous ridership growth in 2022:

Landing	Non-Hub Rank	Weekday Growth 2022 (Since 2019)	Weekend Growth 2022 (Since 2019)	Average Daily Ridership 2022 (1/1 – 12/31)
Hunters Point South	5 <sup>th</sup>	33% • AM Peak ▲ by 66% • PM Peak ▲ by 41%	8%	660 (241k annual)



# Current Landing

- One of the oldest landings in the system (predates NYC Ferry)
- Nearing the end of its useful life and needs to be replaced in order to continue serving this location
- A replacement landing in this location was previously considered but proved infeasible due to tunnels and water depths



## Access

Fully ADA-accessible landing



## Safety

Ensure the structural integrity of landing



## Reliability

Install an additional slip to improve service reliability



# Alternatives Analysis Study

McLaren Engineering started the Alternatives Analysis Study to evaluate four proposed sites for the location of a new ferry landing at HPS.

The study seeks to answer the following questions:

- Where can we safely navigate?
- Can we responsibly construct at this site?
- Are there any environmental considerations?
- How much will it cost?
- What are the impacts to the community – residents, park users and ferry riders?



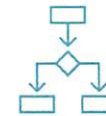
# Timeline



Spring 2023



Summer/Fall 2023



Fall 2023

## Alternatives Analysis Study

Technical surveys and preliminary conceptual design

## Study Input

Combination of informal and formal engagement on the study options

## Study Outcome

Present final report and recommendations to community

We are here

Thank you.