

12TH STREET PLAZA

Queens Community Board 2

February 2022

Site and Partner Context

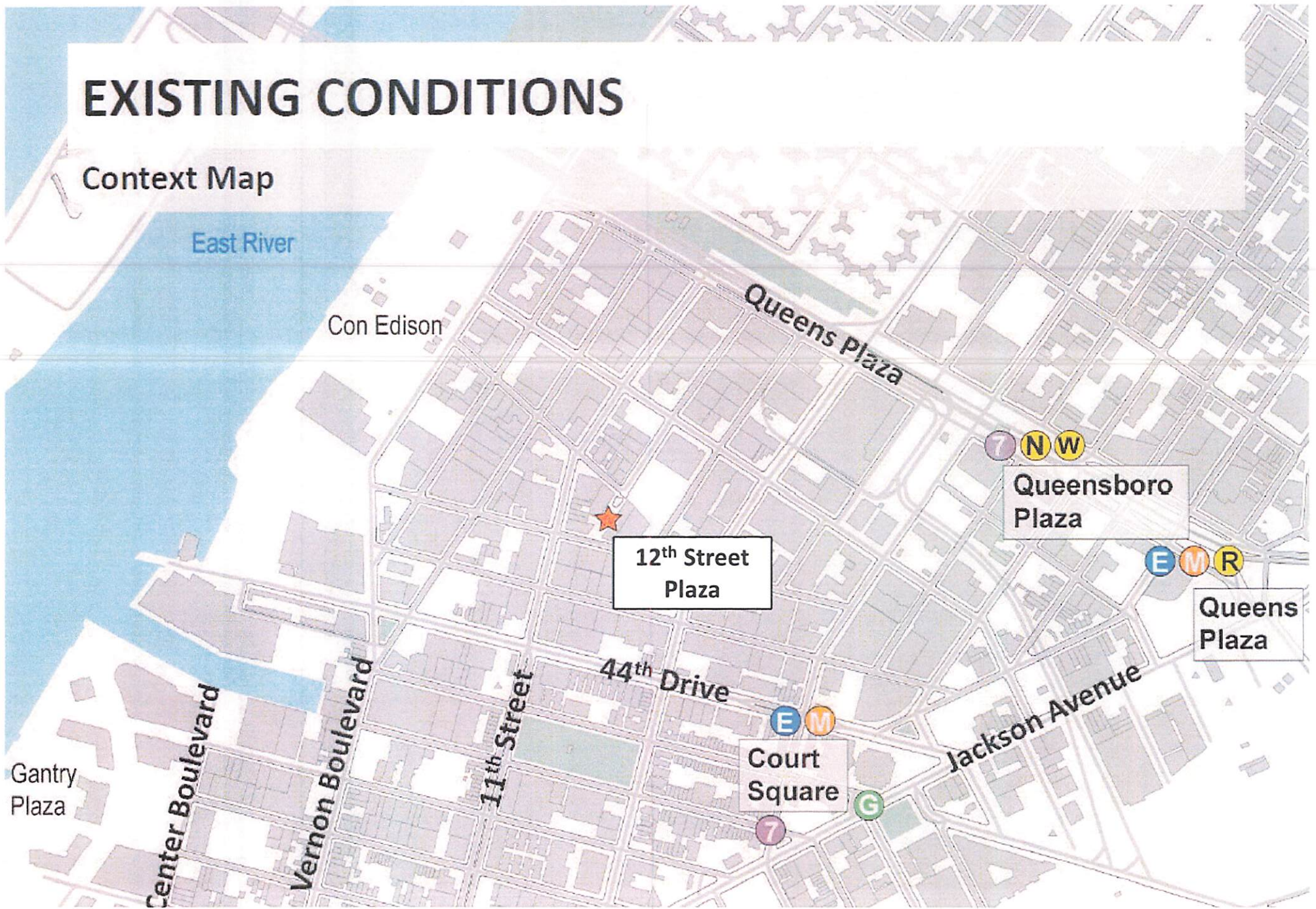
VOREA



FUTURE GREEN

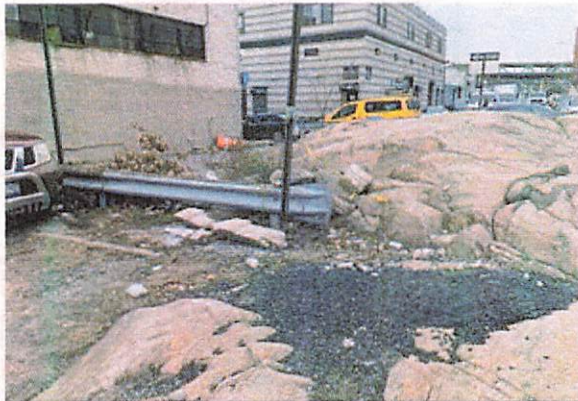
EXISTING CONDITIONS

Context Map



PHASE 1

StreetSeat Activation



VOREA



FUTURE GREEN

PHASE 1

StreetSeat Activation

WHAT WE'VE DONE TO DATE:

- **Outdoor public space activation through the DOT StreetSeat program. Initial scope of work included:**
 - Removal of hazardous and broken vehicles along the street
 - Clean up and light resurfacing of street covering
 - Installation of custom-built furniture and planters
 - Highlight of Ancient Glacier Rock with painted street artwork
 - Ongoing maintenance of the street
- **Neighborhood activations:**
 - Ice cream and cookie social
 - Utilization of street by area residents and businesses
 - Outdoor dining designation during pandemic

12th Street has become a neighborhood destination for social gathering as an inclusive, safe and well-maintained outdoor public space.

Through collaboration with local residents, businesses and the NYC Department of Transportation, we believe the plaza space will bring many further benefits to the LIC community.

PARTNER MAINTENANCE OBLIGATIONS

VOREA, through its in-house management platform, will perform ongoing maintenance obligations associated with the proposed improvements inclusive of:

- Cleaning and garbage removal
- Maintenance and upkeep of plaza furnishings
- Maintenance of plaza green-features including ongoing watering, weeding, pruning, etc. of planted areas
- Winter snow and ice removal
- Day-to-day management of public outdoor space



VOREA



COMMUNITY OUTREACH & SUPPORT

Letters of support

- Court Square Civic
- Gallant & Wein
- ICONYC
- Rockrose
- Gotham
- Long Island City Partnership
- Court Square Civic Association
- Night Seeing (Emily Weidenhof)
- Badshah Indian
- Artstrong NYC
- Lupo Rosso
- Ninth Street Espresso

ON-SITE COMMUNITY FORUM

August, 2020



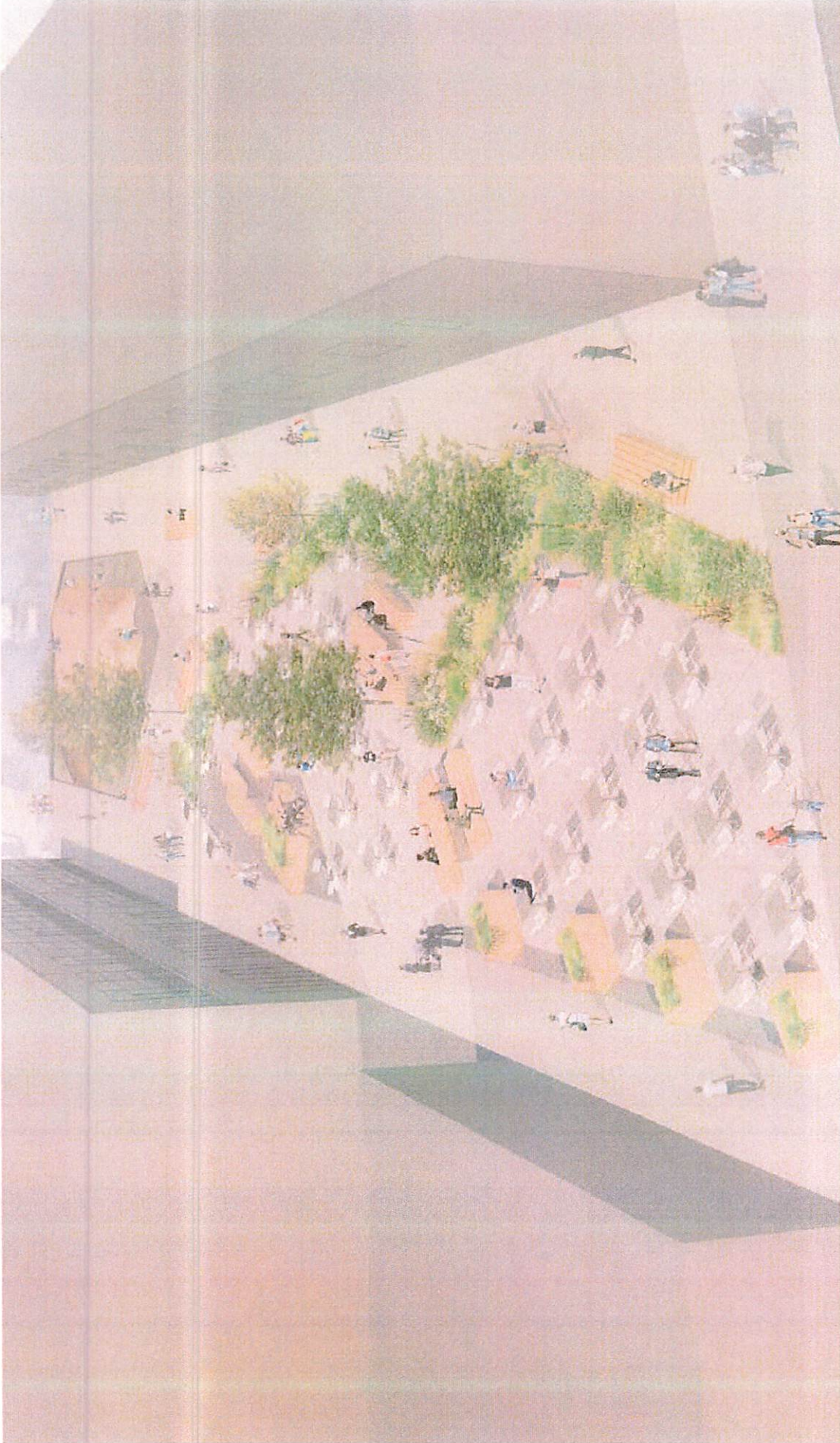
This past August, 2020, a public event was hosted on 12th Street to discuss proposed improvements to the existing public space. Community feedback included the desire for additional shading features within the space, additional bike racks and the preference for medium to larger format furniture.

VOREA is proposing to add larger trees within the space to provide increased shading, to add bike racks to the 44th Ave sidewalk and to integrate larger format furniture features within the seating areas.

PHASE 2

Concept Rendering

*Design by Future Green – the project design lead

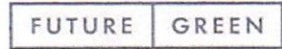


VOREA

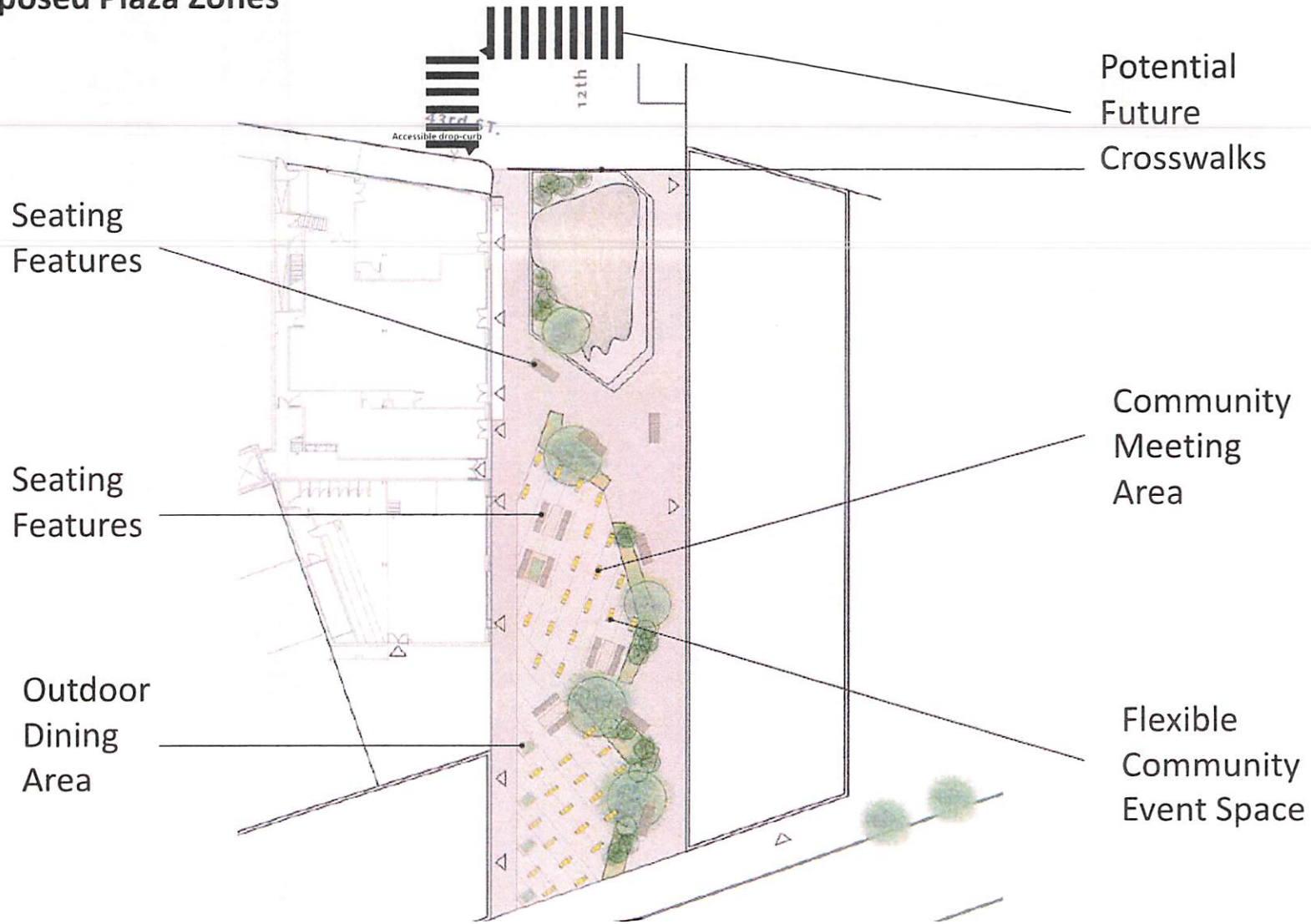


PHASE 2

*Design by Future Green – the project design lead



Proposed Plaza Zones

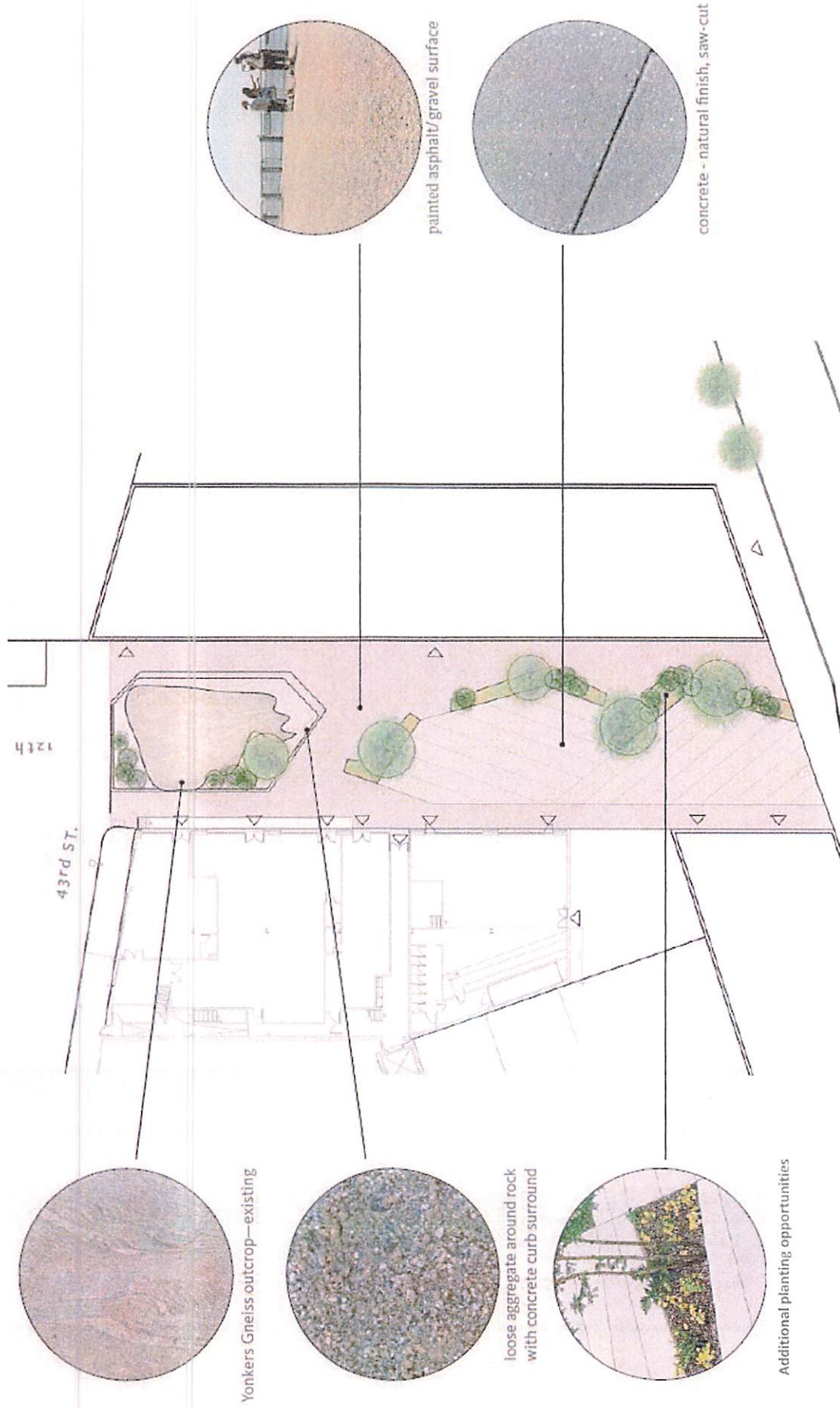


PHASE 2

*Design by Future Green – the project design lead

FUTURE GREEN

Proposed Plaza Design + Finishes – DOT STANDARD MATERIALS

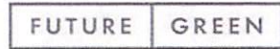


VOREA

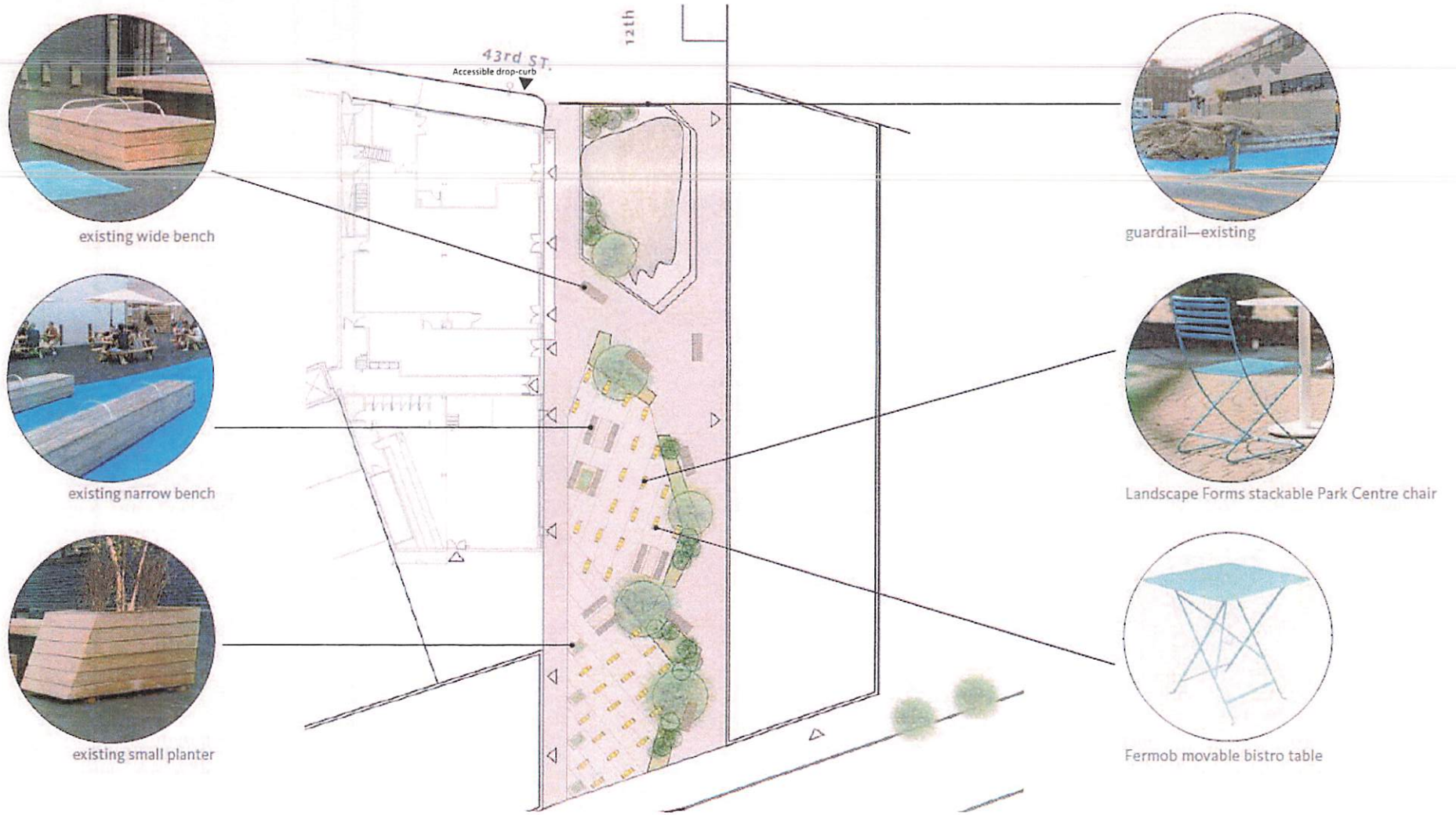
FUTURE GREEN

PHASE 2

*Design by Future Green – the project design lead



Proposed Plaza Design + Finishes

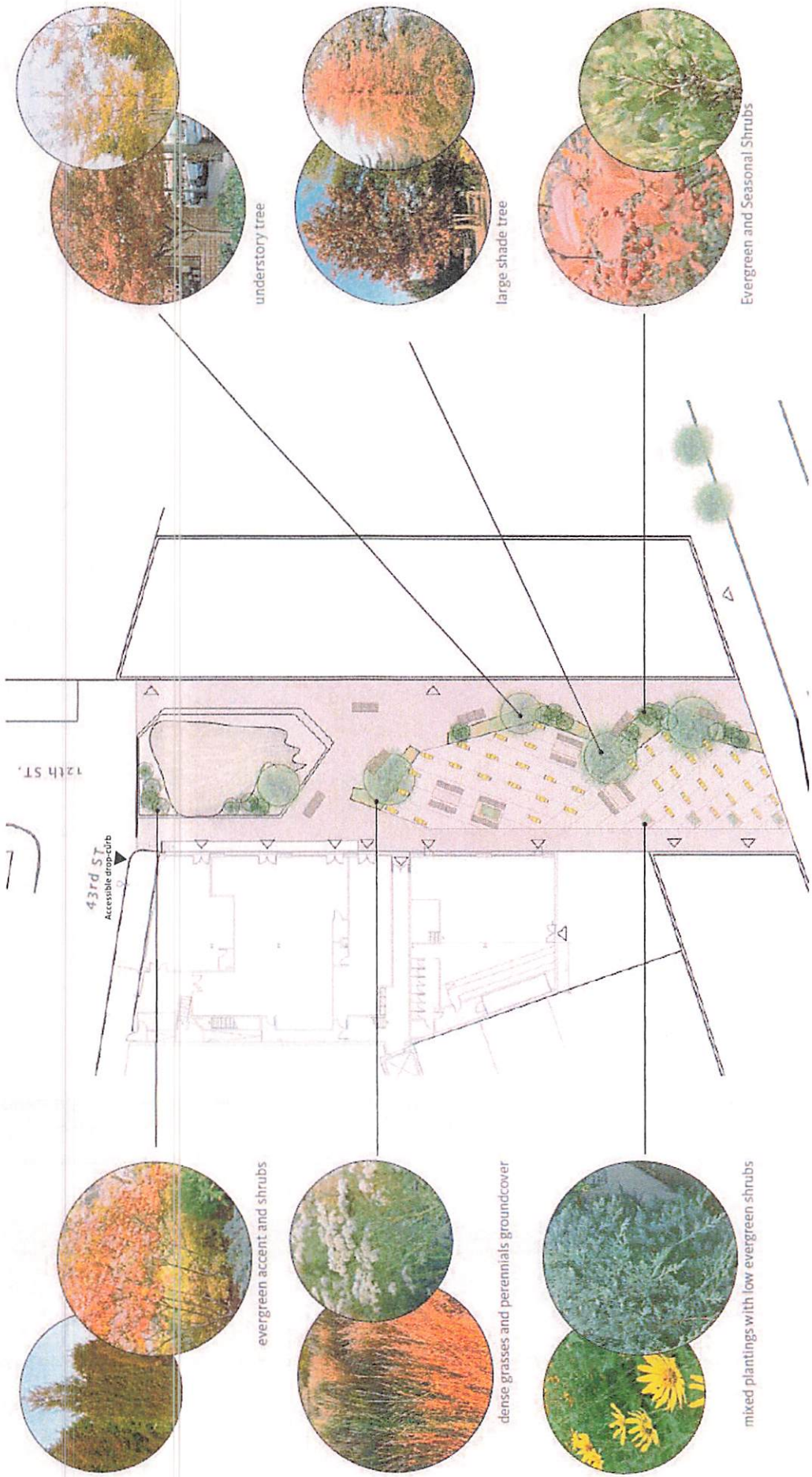


PHASE 2

*Design by Future Green – the project design lead

FUTURE GREEN

Sample Plaza Plantings



VOREA

FUTURE GREEN

IMPLEMENTATION TIMELINE

January 2022

- Construction Planning and Approvals
- PDC Submission

February 2022

- Community Board Presentation
- PDC Hearing

Spring 2022 (tentative)

- Commencement of Public Plaza Implementation

Summer 2022 (tentative)

- Public Launch of the Completed Space

PARTNER / BUSINESS CONTEXT

The VOREA Group, VOREA Construction Companies, Igloo

- A multifaceted real estate company equipped to perform mid to large scale development projects throughout the Tri-state area, with a proven track record and an active pipeline of developments across NYC.
- Through its affiliate, The VOREA Construction Companies, VOREA has extended its in-house development platform, equipped to execute on a variety of construction projects throughout the greater NYC area.
- Igloo serves to assist local NYC businesses by providing real estate services for growing companies looking to relocate or expand within NYC markets. Provides design, construction and financial support for firms seeking sustainable growth.
- VOREA has additional commercial assets in development on Jackson Avenue, 50th Ave, Borden Avenue, 5th Street, and 11th Street in Long Island City.



THANK YOU!

Questions?





Citi Bike Expansion Draft Plan

Queens Community Board 2 – Transportation Committee

February 1, 2022



February 1, 2022
Transportation Committee
Citi Bike Expansion Draft Plan
Attachment #2

NYC Bike Share Overview



What is Bike Share?

Shared-Use Mobility

Network of shared bicycles

- Intended for point-to-point transportation

Increased mobility

- Additional transportation option
- Convenient for trips that are too far to walk, but too short for the subway or a taxi
- Connections to transit

Convenience

- System operates 24/7
- No need to worry about bike storage or maintenance

Positive health & environmental impacts



What is Citi Bike?

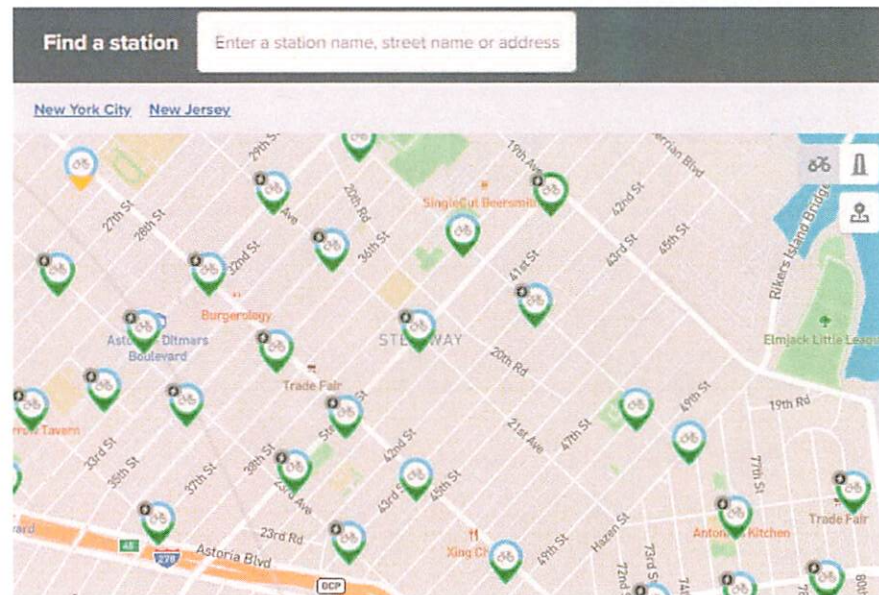
New York City's Bike Share System

Private – Public partnership

- NYC DOT responsible for system planning and outreach
- Lyft responsible for day-to-day operations and equipment
- Funded by sponsorships & memberships

Citi Bike is a station-based bike share system. Stations:

- Can be on the roadbed or sidewalk
- Are not hardwired into the ground
- Are solar powered and wireless
- Provides reliability, consistency, and redundancy for riders



Citi Bike to Date

8+ Years of Citi Bike

Citi Bike Launch: Phase 1

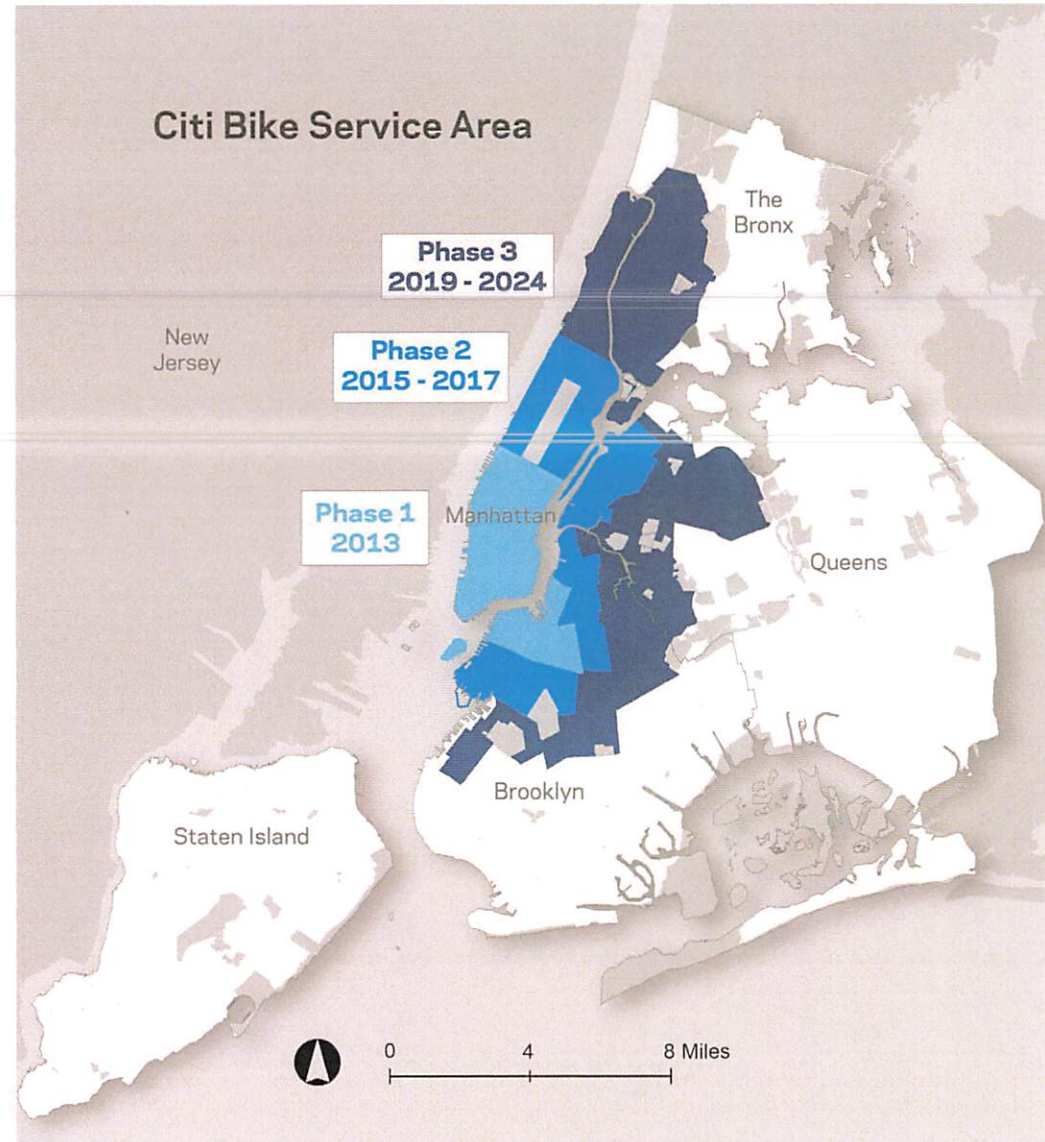
- 2013
- Manhattan & Brooklyn
- 330 stations
- 6,000 bikes

Citi Bike Expansion: Phase 2

- 2015 – 2017
- Manhattan, Brooklyn, Queens
- 750 stations
- 12,000 bikes

Citi Bike Expansion: Phase 3

- Manhattan, Brooklyn, Queens, Bronx
- 2019 – 2024
- + 35 square miles
- + 24,000 bikes



High Ridership

By the Numbers

~140 million trips to date

27+ million trips in 2021

~5 trips per day per bike

~100,000 daily trips in peak riding months

120,000+ daily rides during busiest days

~160,000 annual members

1+ million unique riders in 2021



Pricing

Memberships		
<p>Single Ride \$3.99</p> <p>One 30 minute ride</p> <p>Available via the Lyft smartphone app</p>	<p>Day Pass \$15</p> <p>Includes unlimited 30 minute rides in a 24 hour period</p>	<p>Annual \$185/year</p> <p>Or \$15/month</p> <p>Includes unlimited 45 minute rides</p>
Reduced Fare Bike Share & Community Development Credit Union Rates		
<p>NYCHA Residents & SNAP Recipients \$5/month Annual commitment optional</p> <p>Includes unlimited 45 minute rides</p>	<p>Community Development Credit Union Members \$5/month With annual commitment</p> <p>Includes unlimited 45 minute rides</p>	

*Additional charges apply for ebikes and late fees

Equity Efforts

Bike Share for Everyone

Reduced Fare Bike Share

Community Grants Program

Partner Keys & Free Ride Codes

Equity Advisory Board

Citi Bike Medical Workers Program



Safe Cycling

Safe Cycling Environment

DOT promotes cycling safety with:

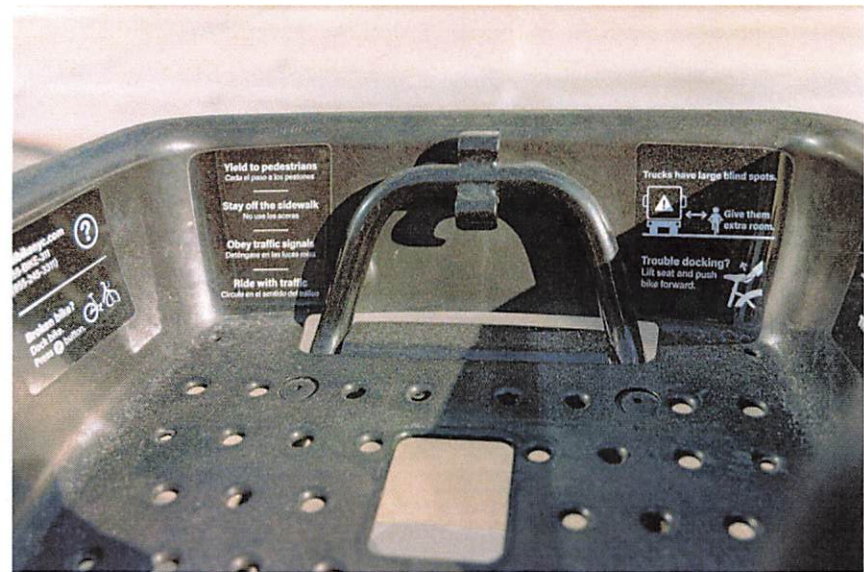
- Helmet giveaways
- Light and bell giveaways
- Safety awareness classes



2019 Green Wave plan

- Focuses on improving bicycle infrastructure in bike share expansion area
- Includes expanded education efforts

All Citi Bike kiosks and bicycles have the Rules of the Road



Planning Process and Public Outreach

2

Planning Process

1. Station Siting
2. Public Outreach
3. Draft Plan Creation
4. Final Steps & Installation

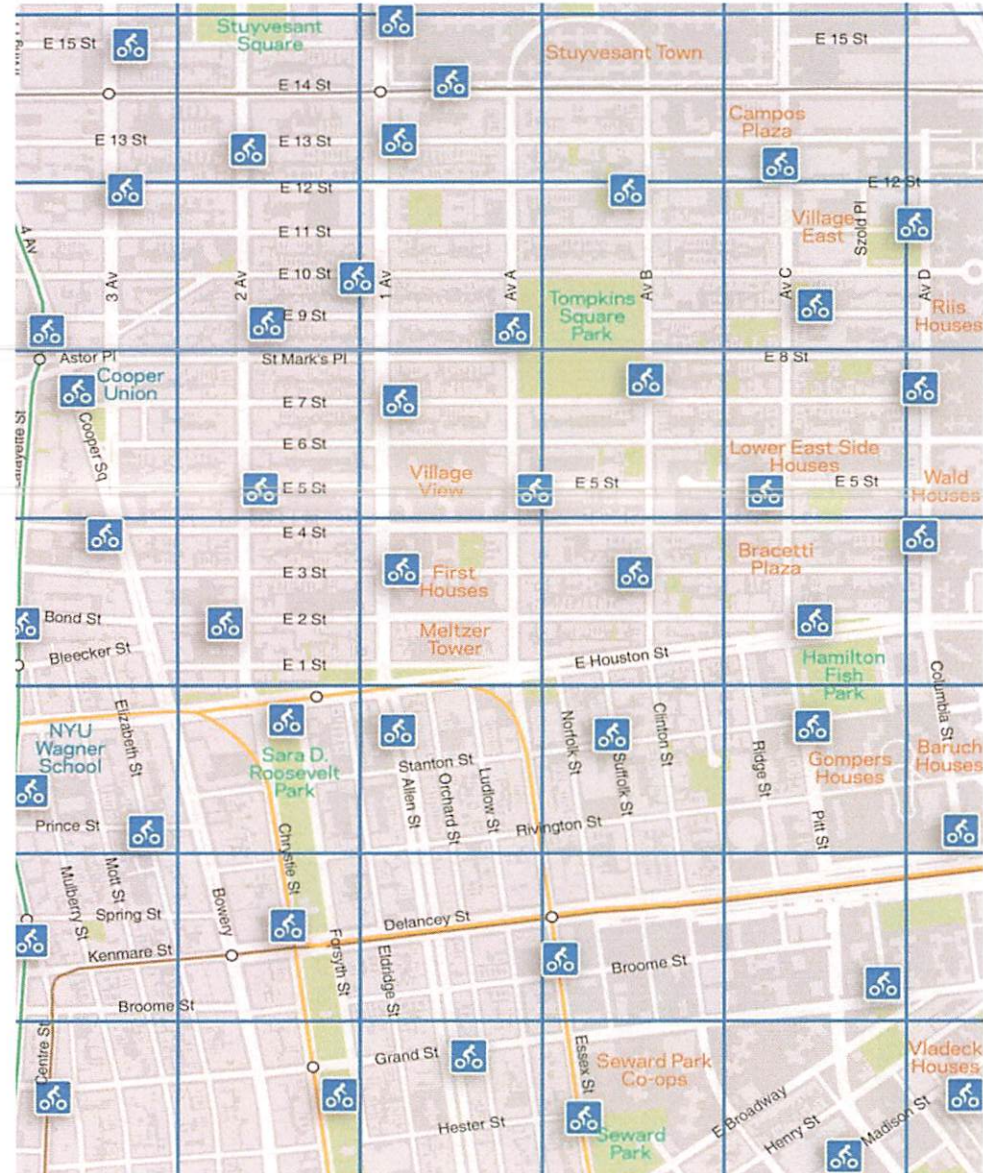


1. Station Siting

Success based on high density of stations and equal access to stations across service area

Stations located every few blocks (approximately 3-5 minute walk)

Considerations for hydrants, utilities, accessibility, among other factors



2. Public Outreach

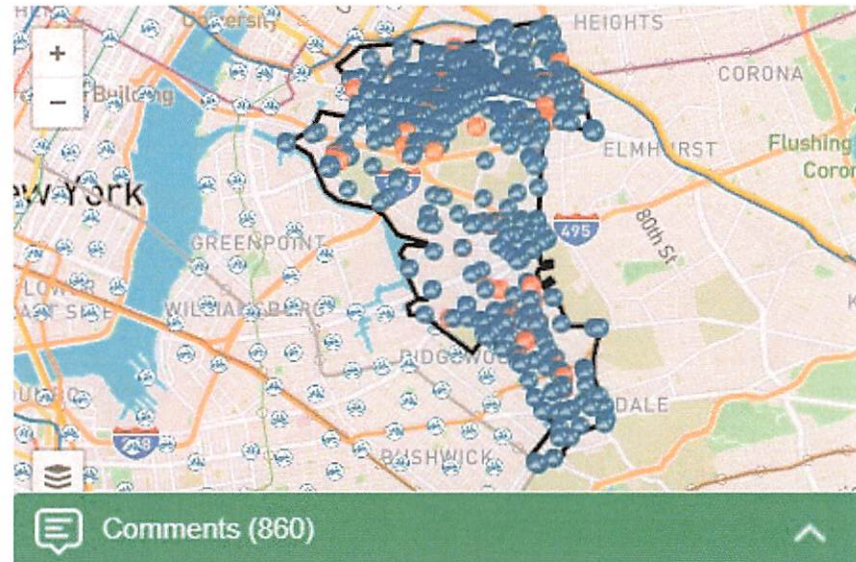
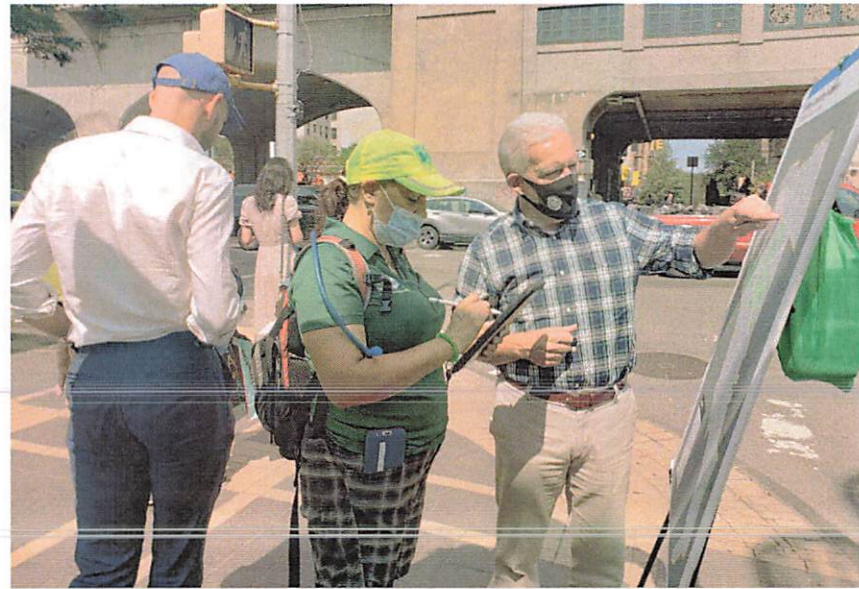
In-person outreach with the DOT Street Ambassadors

Interactive station planning map & feedback portal

- <https://nycdotprojects.info/CitiBikePhase3>

Virtual stakeholder meetings and public town halls

764 total comments collected in CB 2



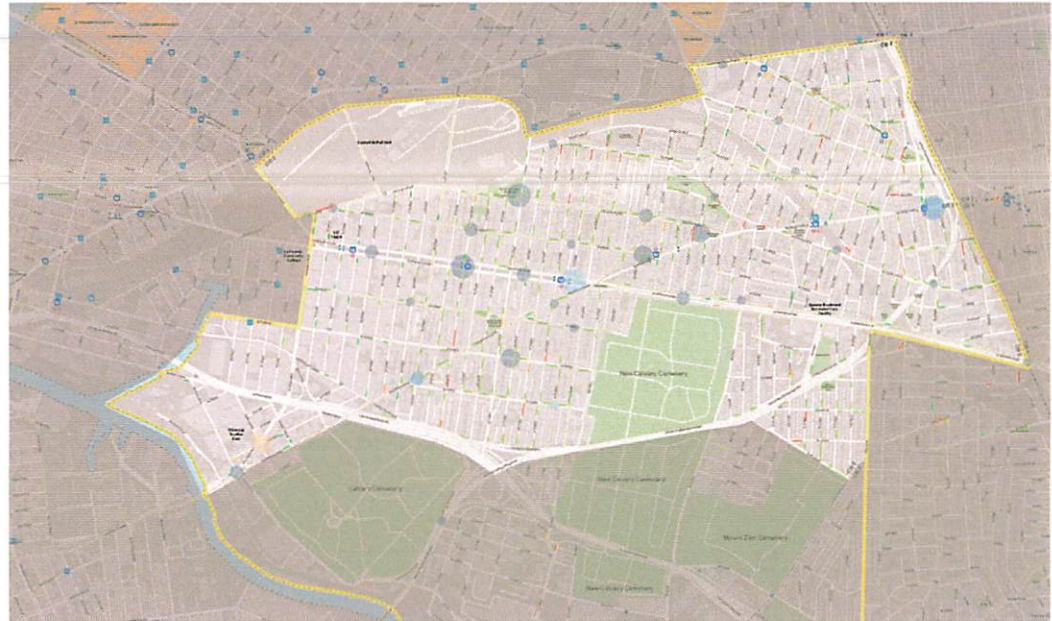
3. Draft Plan Creation

Present draft plan of stations to Community Boards and post online

Station locations determined by:

- Community feedback
- Siting principles & guidelines
- Lyft operational considerations

Gather feedback on draft plan and adjust as needed



4. Final Steps & Installation

Gather feedback on the Draft Plan

1 month feedback period

Technical screening & coordination

Site specific outreach & notifications

Install stations

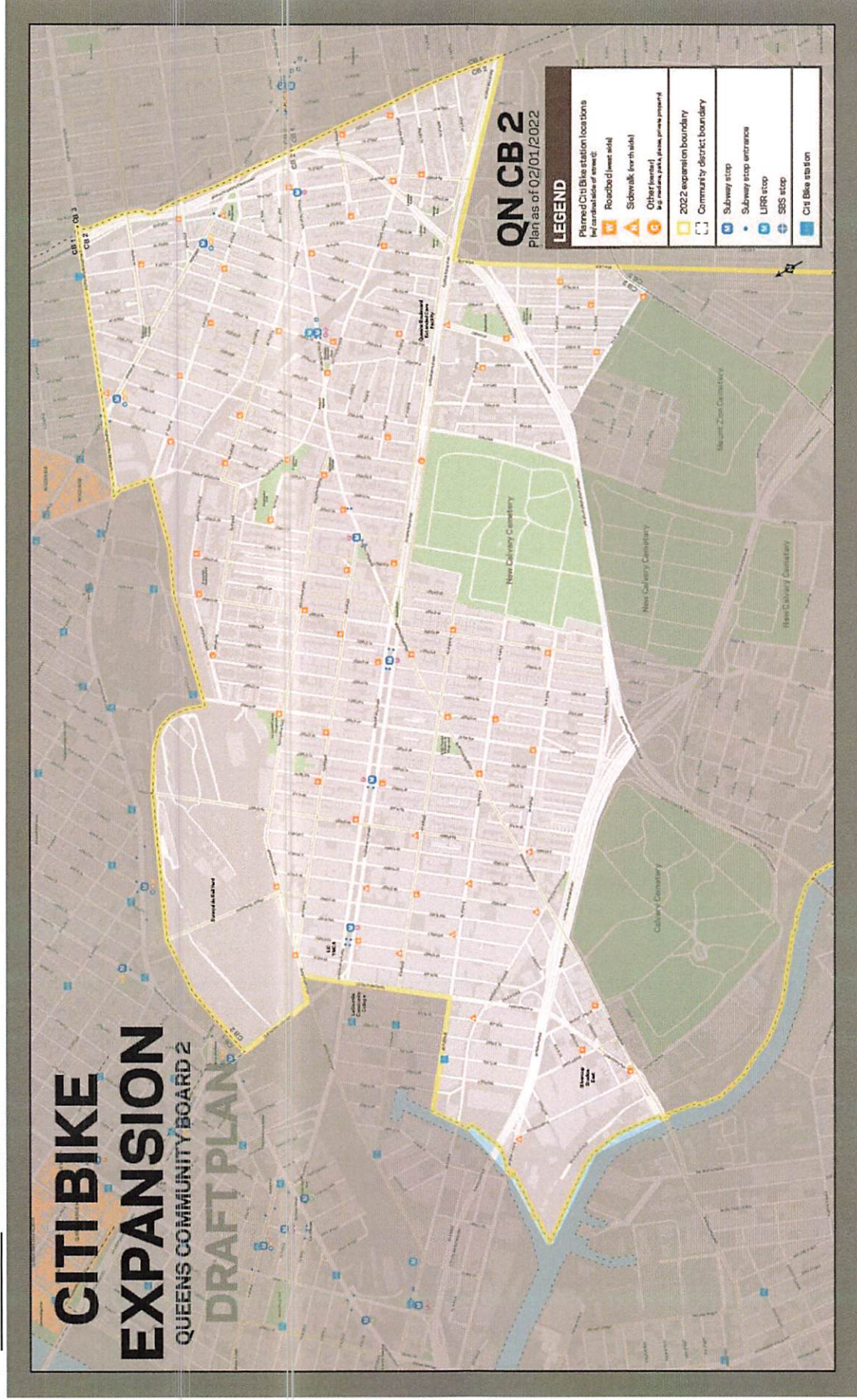
Continued outreach, monitoring, & adjustment



Draft Plan Review

3

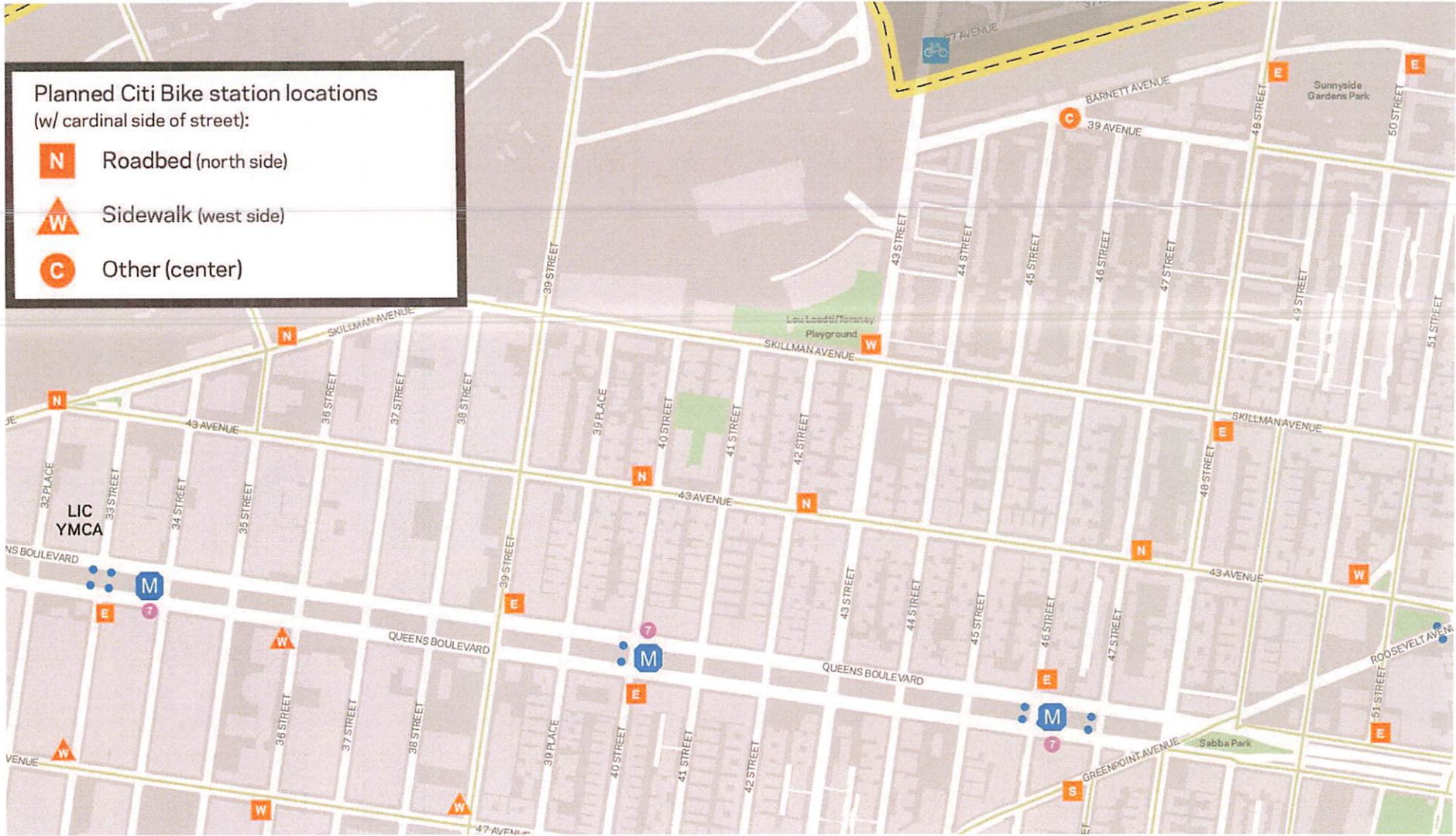
Draft Plan Review

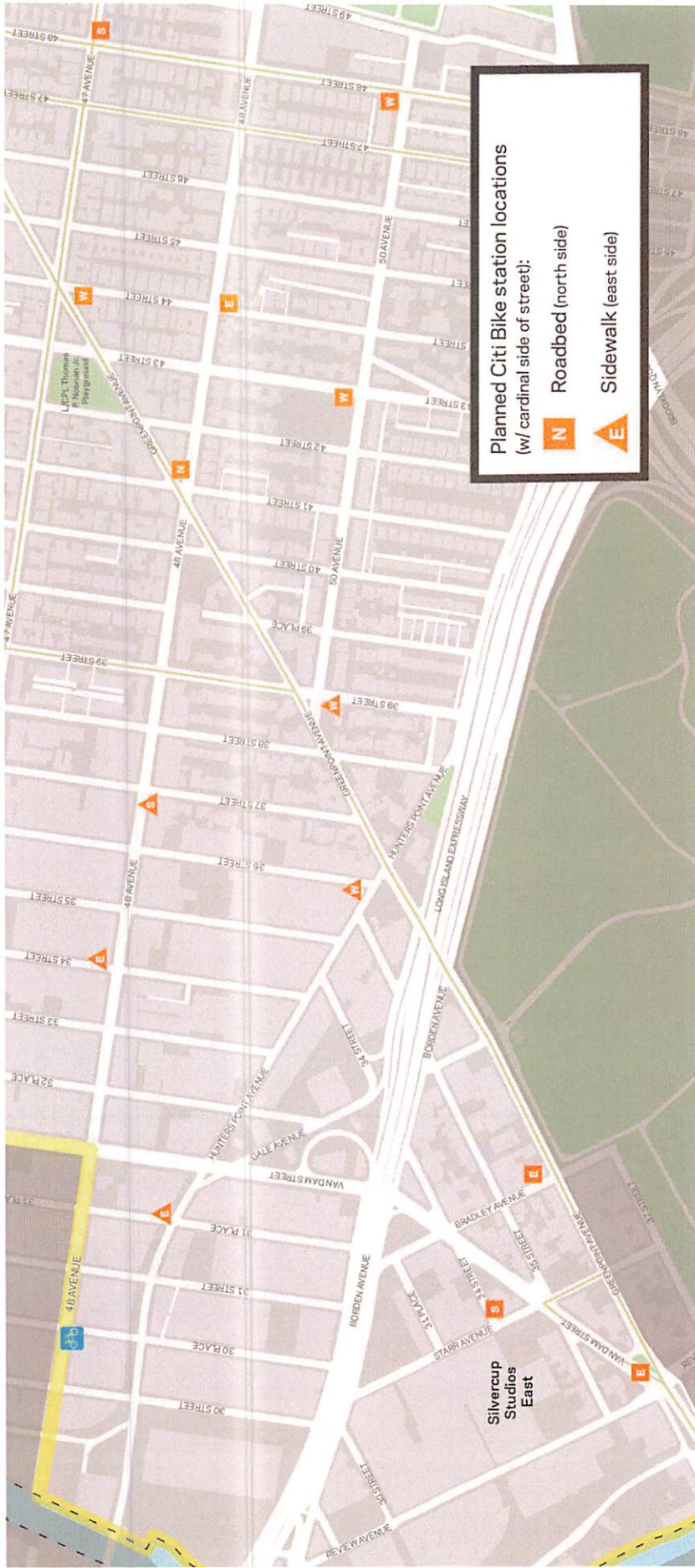


Planned Citi Bike station locations
(w/ cardinal side of street):

-  Roadbed (north side)
-  Sidewalk (east side)









Thank You!

Questions?



NYCDOT



nyc_dot

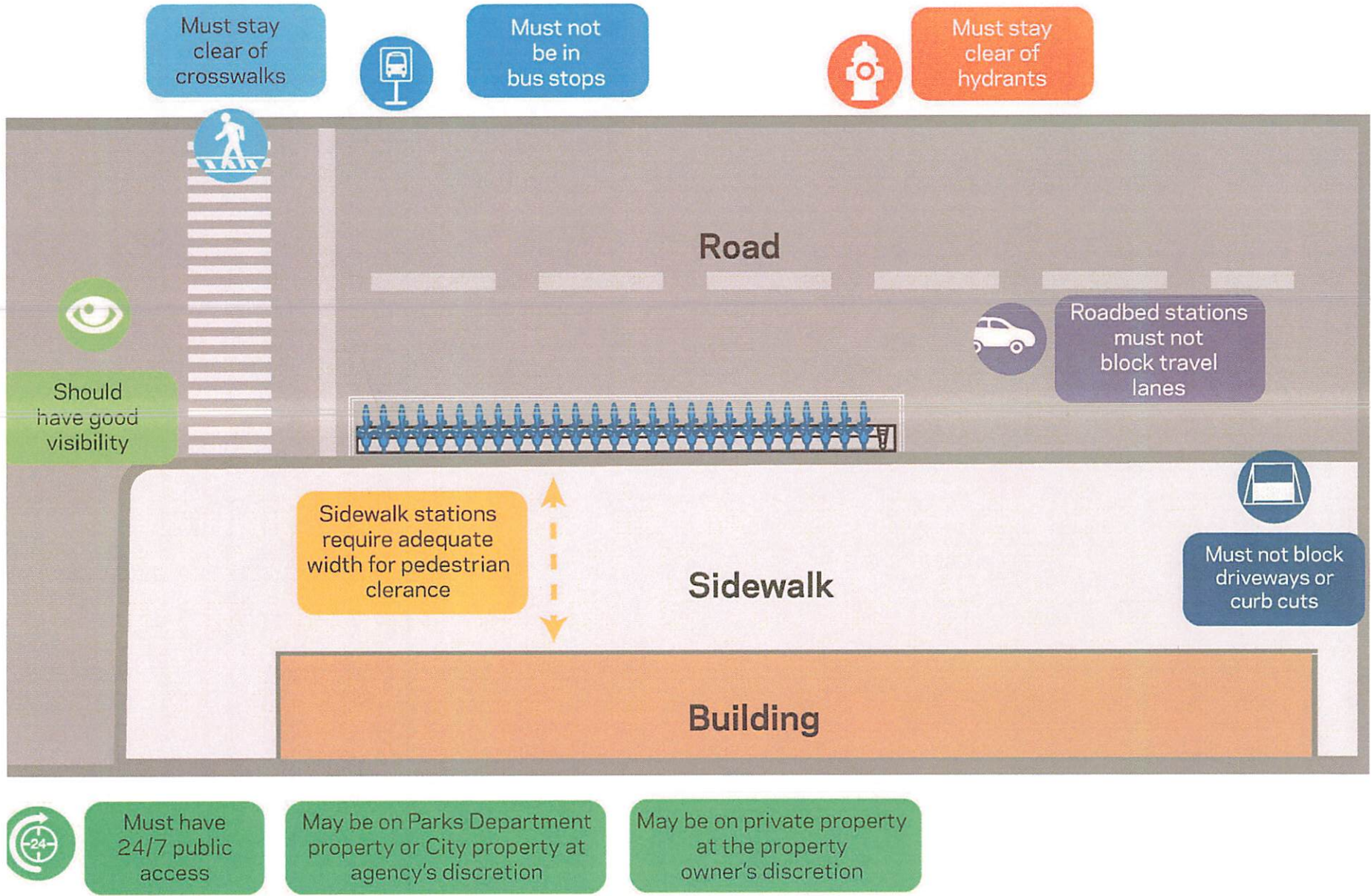


nyc_dot



NYCDOT

yc.gov/dot



Station not to scale