

# Flushing Line Improvements and State of Good Repair for 6 Stations and 61 St – Woodside

7

## Community Board 2 Queens



Construction & Development

# Flushing Line Improvements and State of Good Repair Project Intent

- 7 Station Improvements
  - 61 St – Woodside
  - 74 St – Broadway
  - 52 St
  - 69 St
  - 82 St
  - 103 St
  - 111 St
- Structural rehabilitation
- Systems upgrades
  - CCTV
  - Help Points
  - Public Address
  - Customer Information
  - Lighting
- Start Date: Q1 of 2023
- Anticipated Completion: Q4 of 2025



# Flushing Line Improvements and State of Good Repair Preliminary Work Phasing Plan

Work Locations	Track	Duration
52nd, 61st & 69th St Stations	Flushing Bound	5-months
52nd, 61st & 69th St Stations	Manhattan Bound	5-months
61st St (Express Track) 103rd Street	Manhattan/Flushing Bound Flushing Bound	8-months 7-months
103rd St Station	Manhattan Bound	7-months
82nd and 111th St Stations	Manhattan Bound	6-months
82nd and 111th St Stations	Flushing Bound	6-months

# Station Improvements State of Good Repair 61 St - Woodside

7



Construction & Development

# 61 St – Woodside: Customer Benefits – State of Good Repair

- Strengthen and extend the structural lifespan of the station for the next 25 years
- ADA accessibility upgrades by making platforms ADA accessible and adding detectible warning strips at platform edge
- Upgrade station drainage and waterproofing
- Improving escalator service by replacing escalators at 61 St- Woodside (1) and 74 St- Broadway (3)
- Improve stair conditions by replacing stairs from street to mezzanine level and mezzanine to platform level
- Enhance customer information experience by installing customer information center digital screens and advertisement digital screens



# 61 St – Woodside: Customer Benefits – State of Good Repair

- Strengthen and extend the structural lifespan of the station for the next 25 years
- ADA accessibility upgrades by making platforms ADA accessible and adding detectible warning strips at platform edge
- Upgrade station drainage and waterproofing
- Improving escalator service by replacing escalators at 61 St- Woodside (1) and 74 St- Broadway (3)
- Improve stair conditions by replacing stairs from street to mezzanine level and mezzanine to platform level
- Enhance customer information experience by installing customer information center digital screens and advertisement digital screens



# 61 St – Woodside: Customer Benefits – State of Good Repair

- Strengthen and extend the structural lifespan of the station for the next 25 years
- ADA accessibility upgrades by making platforms ADA accessible and adding detectible warning strips at platform edge
- Upgrade station drainage and waterproofing
- Improving escalator service by replacing escalators at 61 St- Woodside (1) and 74 St- Broadway (3)
- Improve stair conditions by replacing stairs from street to mezzanine level and mezzanine to platform level
- Enhance customer information experience by installing customer information center digital screens and advertisement digital screens



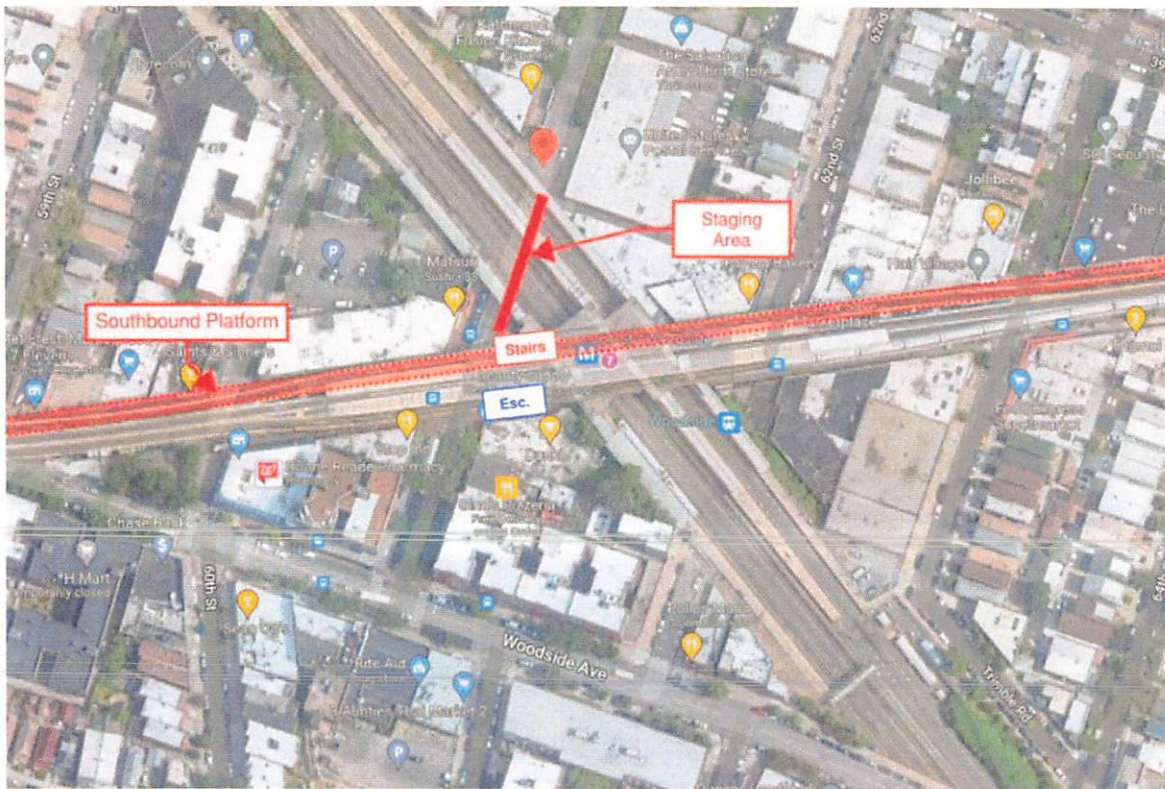
# 61 St – Woodside: Customer Benefits – State of Good Repair

- Strengthen and extend the structural lifespan of the station for the next 25 years
- ADA accessibility upgrades by making platforms ADA accessible and adding detectible warning strips at platform edge
- Upgrade station drainage and waterproofing
- Improving escalator service by replacing escalators at 61 St- Woodside (1) and 74 St- Broadway (3)
- Improve stair conditions by replacing stairs from street to mezzanine level and mezzanine to platform level
- Enhance customer information experience by installing customer information center digital screens and advertisement digital screens





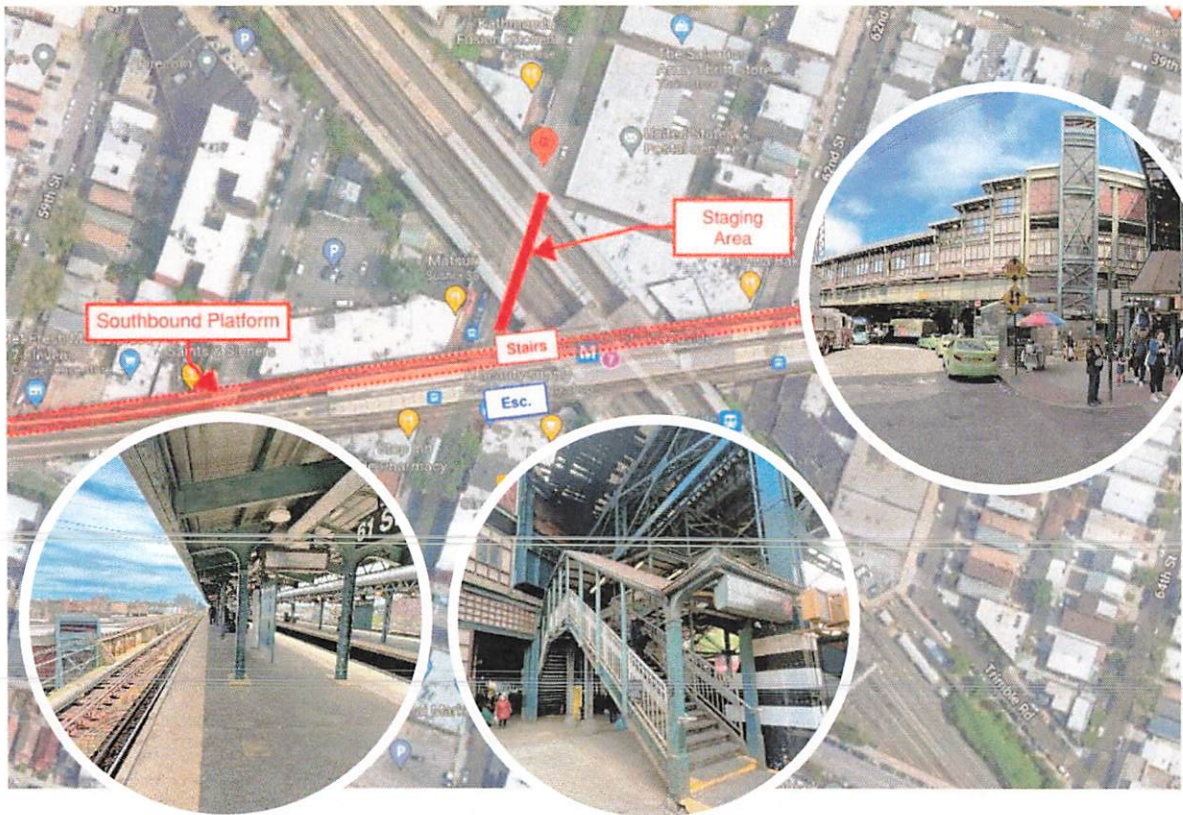
# 61<sup>st</sup> – Woodside: MTA Service and Street Impacts



## Service Impact – Manhattan-bound

- Manhattan-bound platform will be closed for approx. 5 months (140 calendar days)
- Local Manhattan-bound service via middle track.
- Temporary platforms to be installed at 33 St. - Rawson St., 40 St. - Lowery St., and 46 St. - Bliss St. stations for service during closure of local track.
- Bus service between 74th St and Queensboro Plaza provided for 3 weekends.
- Additional service on the Queens Boulevard Line will be provided for customers transferring at 74<sup>th</sup> St for customers traveling to Manhattan.

# 61<sup>st</sup> – Woodside: MTA Service and Street Impacts



## Service Impact – Manhattan-bound

- Manhattan-bound platform will be closed for approx. 5 months (140 calendar days)
- Local Manhattan-bound service via middle track.
- Temporary platforms to be installed at 33 St. - Rawson St., 40 St. - Lowery St., and 46 St. - Bliss St. stations for service during closure of local track.
- Bus service between 74th St and Queensboro Plaza provided for 3 weekends.
- Additional service on the Queens Boulevard Line will be provided for customers transferring at 74<sup>th</sup> St for customers traveling to Manhattan.

# 61st – Woodside: MTA Service and Street Impacts

- Service Impact – Manhattan-bound**
- Manhattan-bound platform will be closed for approx. 5 months (140 calendar days)
  - Local Manhattan-bound service via middle track.
  - Temporary platforms to be installed at 33 St. - Rawson St., 40 St. - Lowery St., and 46 St. - Bliss St. stations for service during closure of local track.
  - Bus service between 74th St and Queensboro Plaza provided for 3 weekends.
  - Additional service on the Queens Boulevard line will be provided for customers transferring at 74<sup>th</sup> St for customers traveling to Manhattan.



# 61<sup>st</sup> – Woodside: MTA Service and Street Impacts



## Service Impact – Express Track

- Express track will be closed for approx. 8 months (224 calendar days)
- Local Manhattan-bound and Flushing-bound service is not affected.
- Manhattan-bound and Flushing-bound platforms will contain barricades to protect customers from work on the express track

# 61<sup>st</sup> – Woodside: MTA Service and Street Impacts



## Service Impact – Flushing-bound

- Flushing-bound platform will be closed for approx. 5 months (140 calendar days)
- Local Flushing-bound access via middle track.
- Temporary platforms to be installed at 33rd St. - Rawson St., 40th St. - Lowery St., and 46th St. - Bliss St. stations for service during closure of local track.
- Bus service between 74th St and Queensboro Plaza provided for 2 weekends.

## Staging Areas for Escalator Construction

- Occupy 7 parking spaces (100ft.) of east parking lane between Roosevelt Ave & Woodside Ave on 61<sup>st</sup> St.
- Occupy 100ft. of eastbound bus lane on Roosevelt Ave between 61<sup>st</sup> & 62<sup>nd</sup> St.

# 61<sup>st</sup> – Woodside: MTA Service and Street Impacts



## Service Impact – Flushing-bound

- Flushing-bound platform will be closed for approx. 5 months (140 calendar days)
- Local Flushing-bound access via middle track.
- Temporary platforms to be installed at 33rd St. - Rawson St., 40th St. - Lowery St., and 46th St. - Bliss St. stations for service during closure of local track.
- Bus service between 74th St and Queensboro Plaza provided for 2 weekends.

## Staging Areas for Escalator Construction

- Occupy 7 parking spaces (100ft.) of east parking lane between Roosevelt Ave & Woodside Ave on 61<sup>st</sup> St.
- Occupy 100ft. of eastbound bus lane on Roosevelt Ave between 61<sup>st</sup> & 62<sup>nd</sup> St.

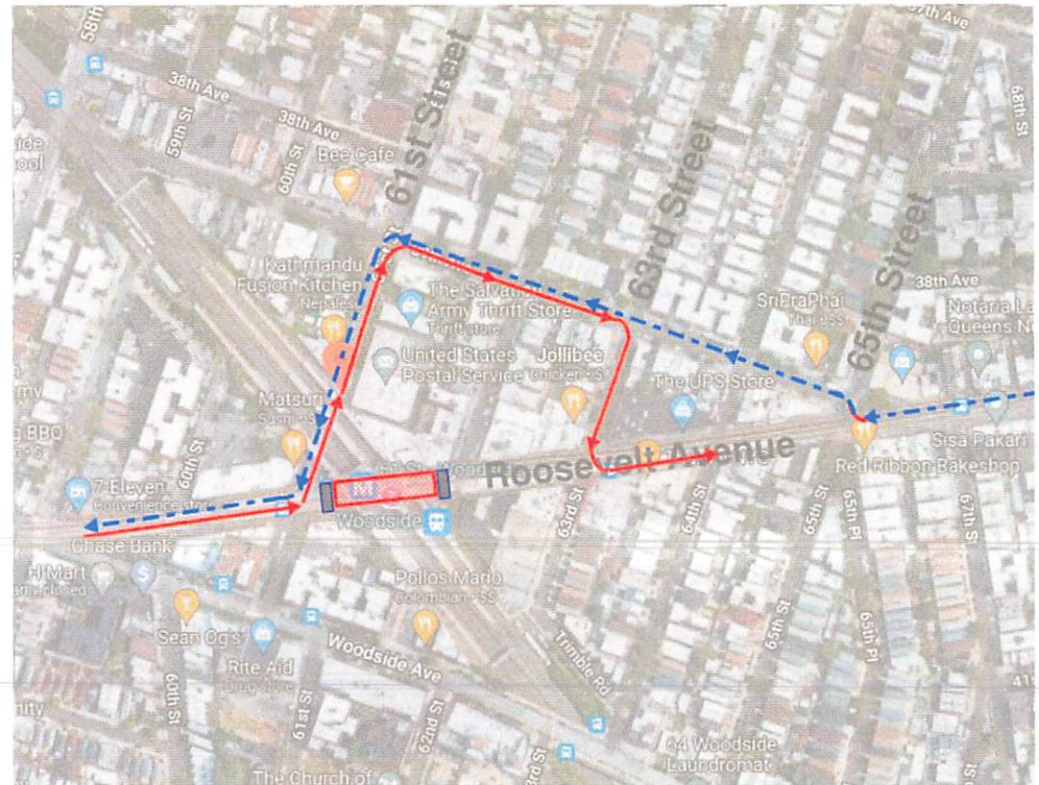
# 61st – Woodside: Street and Traffic Impacts

- Relocation of Q32 Bus on Roosevelt Avenue and 61<sup>st</sup> Street
- MPT detour with Roosevelt Avenue full closure during overpass stair reconstruction and shielding installation between 61<sup>st</sup> and 62<sup>nd</sup> Street with 4 weekend occurrences



# 61st – Woodside: Street and Traffic Impacts

- Relocation of Q32 Bus on Roosevelt Avenue and 61<sup>st</sup> Street
- MPT detour with Roosevelt Avenue full closure during overpass stair reconstruction and shielding installation between 61<sup>st</sup> and 62<sup>nd</sup> Street with 4 weekend occurrences





# 74<sup>th</sup> St Station: Customer Benefits – Escalator Replacement



# Station Improvements State of Good Repair at Five Stations

7



Construction & Development

# Customer Benefits at all Five Stations – State of Good Repair (52<sup>nd</sup>, 69<sup>th</sup>, 82<sup>nd</sup>, 103<sup>rd</sup>, and 111<sup>th</sup> Street)

- Strengthen and extend the structural lifespan of the station for the next 25 years
- ADA accessibility upgrades by making platforms ADA accessible and adding detectable warning strips at platform edge
- Improve stair conditions by replacing stairs from street to mezzanine level and mezzanine to platform level
- Eliminate uneven walking surfaces by replacing the mezzanine floor and platform with new
- Upgrade customer experience with new windscreens, artwork and painting throughout
- Upgrade lighting by providing new and additional lighting fixtures
- Install Passenger Identification CCTV camera system to enhance passenger safety



# MTA Service and Street Impacts

## 52nd St

7



Construction & Development

# 52nd St:



## Service Impact – Manhattan-bound

- **7** train will not stop at 52nd Street Manhattan-bound platform for up to 5 months
- Customers travelling to 52<sup>nd</sup> St. Manhattan-bound may exit at 46<sup>th</sup> St. Station and take the Flushing-bound train to 52<sup>nd</sup> St.

## Staging Areas for Stairs 2 & 4

- Staging Area: Occupy 6 parking spaces (80ft.) east side of 52nd St between Roosevelt Ave & Skillman Ave.
- Stair 2: Occupy 6 parking spaces (90ft.) of westbound side of Roosevelt Ave.
- Stair 4: Occupy 7 parking spaces (100ft.) of westbound side of Roosevelt Ave.

# 52nd St:



## Service Impact – Manhattan-bound

- **7** train will not stop at 52nd Street Manhattan-bound platform for up to 5 months
- Customers travelling to 52<sup>nd</sup> St. Manhattan-bound may exit at 46<sup>th</sup> St. Station and take the Flushing-bound train to 52<sup>nd</sup> St.

## Staging Areas for Stairs 2 & 4

- Staging Area: Occupy 6 parking spaces (80ft.) east side of 52nd St between Roosevelt Ave & Skillman Ave.
- Stair 2: Occupy 6 parking spaces (90ft.) of westbound side of Roosevelt Ave.
- Stair 4: Occupy 7 parking spaces (100ft.) of westbound side of Roosevelt Ave.

# 52nd St: MTA Service and Street Impacts



## Service Impact – Flushing-bound

- **7** train will not stop at 52nd Street Flushing-bound platform for up to 5 months
- Customers travelling to 52<sup>nd</sup> St. Flushing-bound may exit at 61<sup>st</sup> St. Station and take the Manhattan-bound train to 52<sup>nd</sup> St.

## Staging Areas for Stairs 1 & 3 Construction

- Staging Area: Occupy 6 parking spaces (80ft.) east side of 52nd St between Roosevelt Ave and Skillman Ave.
- Stair 1: Occupy bus lane and relocate Q32 Bus Stop on Roosevelt Avenue eastward between 52nd and 53rd St.
- Stair 3: Occupy 7 parking spaces (100ft.) of eastbound side of Roosevelt Ave.

# 52nd St: MTA Service and Street Impacts



## Service Impact – Flushing-bound

- **7** train will not stop at 52nd Street Flushing-bound platform for up to 5 months
- Customers travelling to 52<sup>nd</sup> St. Flushing-bound may exit at 61<sup>st</sup> St. Station and take the Manhattan-bound train to 52<sup>nd</sup> St.

## Staging Areas for Stairs 1 & 3 Construction

- Staging Area: Occupy 6 parking spaces (80ft.) east side of 52nd St between Roosevelt Ave and Skillman Ave.
- Stair 1: Occupy bus lane and relocate Q32 Bus Stop on Roosevelt Avenue eastward between 52nd and 53rd St.
- Stair 3: Occupy 7 parking spaces (100ft.) of eastbound side of Roosevelt Ave.



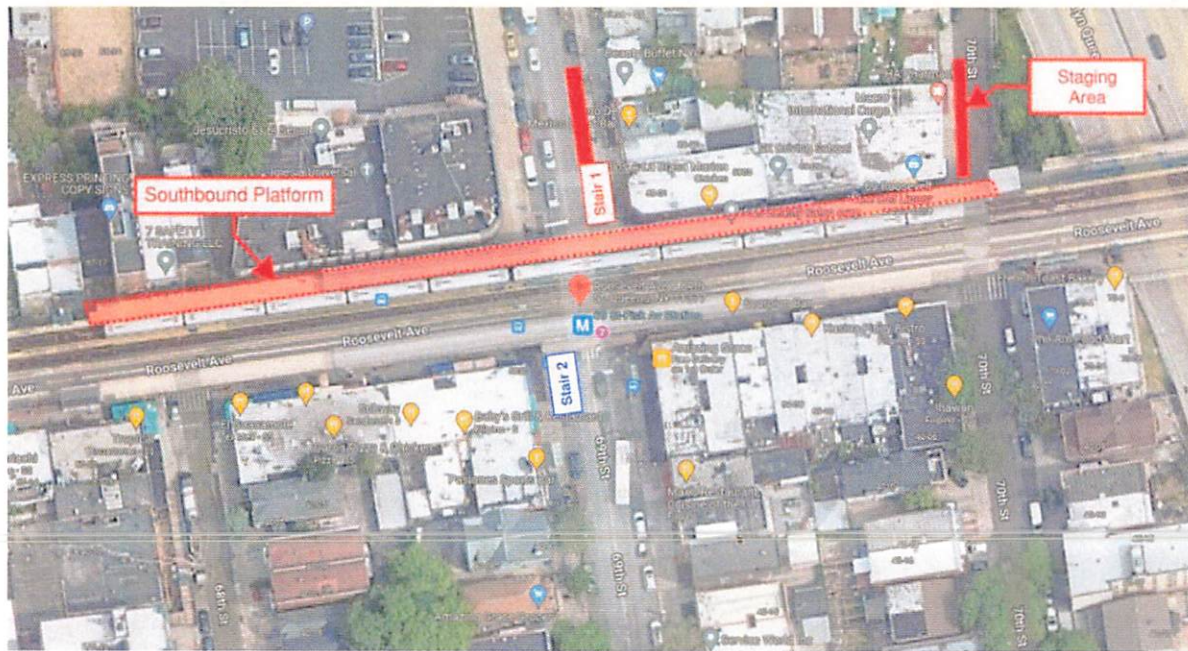
# MTA Service and Street Impacts

## 69th St



Construction & Development

# 69th St: MTA Service and Street Impacts



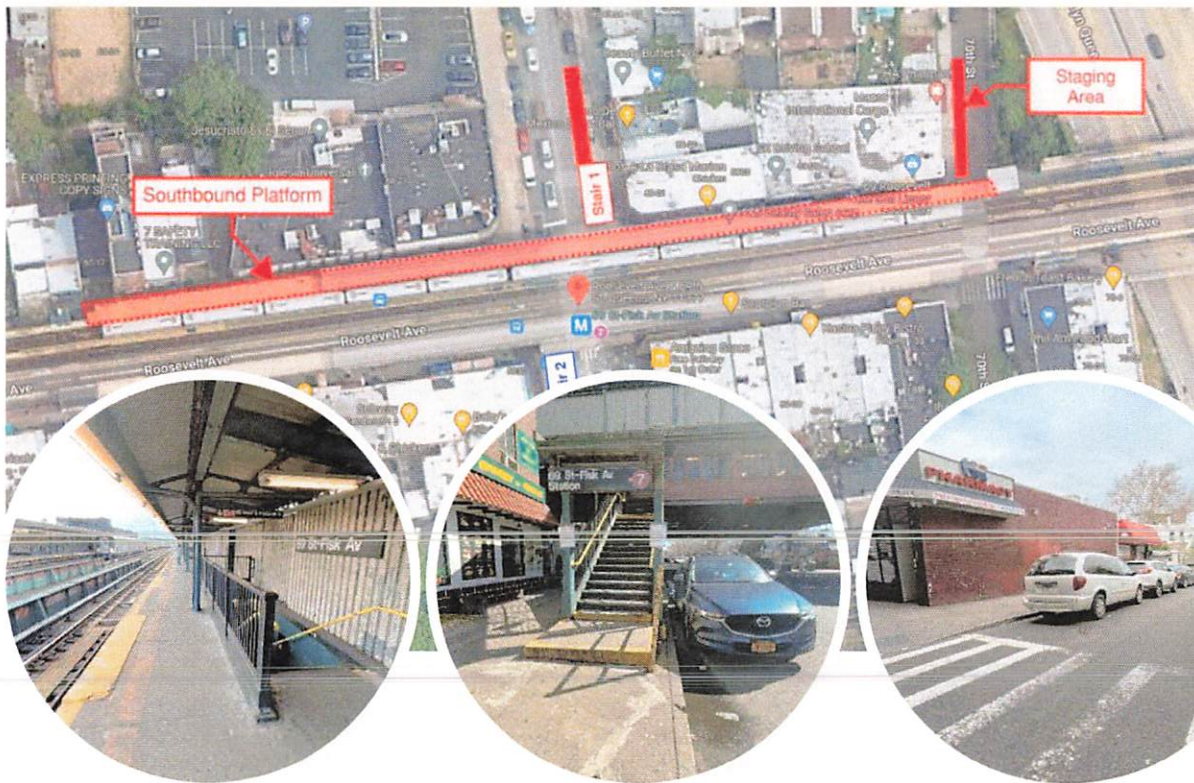
## Service Impact – Manhattan-bound

- **7** train will not stop at 69th Street Manhattan-bound platform for up to 5 months
- Customers travelling to 69<sup>th</sup> St. Manhattan-bound may exit at 61<sup>st</sup> St. Station and take the Flushing-bound train to 69<sup>th</sup> St.

## Staging Areas for Stair 1 Construction

- Stair 1: Occupy 7 parking spaces (100ft.) east side of 69th St between Roosevelt Ave and 38th Ave.
- Staging Area 1: Occupy 4 parking spaces (50ft.) west side of 52nd St between Roosevelt Ave and 38th Ave.

# 69th St: MTA Service and Street Impacts



## Service Impact – Manhattan-bound

- **7** train will not stop at 69th Street Manhattan-bound platform for up to 5 months
- Customers travelling to 69<sup>th</sup> St. Manhattan-bound may exit at 61<sup>st</sup> St. Station and take the Flushing-bound train to 69<sup>th</sup> St.

## Staging Areas for Stair 1 Construction

- Stair 1: Occupy 7 parking spaces (100ft.) east side of 69th St between Roosevelt Ave and 38th Ave.
- Staging Area 1: Occupy 4 parking spaces (50ft.) west side of 52nd St between Roosevelt Ave and 38th Ave.

# 69th St: MTA Service and Street Impacts



## Service Impact – Flushing-bound

- **7** train will not stop at 69th Street Flushing-bound platform for up to 5 months
- Customers travelling to 69<sup>th</sup> St. Flushing-bound may exit at 74<sup>th</sup> St. Station and take the Manhattan-bound train to 69<sup>th</sup> St.

## Staging Areas for Stair 2 Construction

- Stair 2: Occupy bus lane and relocate Q32 Bus Stop south on 69<sup>th</sup> Street.
- Staging Area 2a: Occupy 5 parking spaces (70ft.) east side of 68th St between Roosevelt Ave & 41st St.
- Staging Area 2b: Occupy 7 parking spaces (100ft.) west side of 70th St between Roosevelt Ave & 41st St.

# 69th St: MTA Service and Street Impacts



## Service Impact – Flushing-bound

- **7** train will not stop at 69th Street Flushing-bound platform for up to 5 months
- Customers travelling to 69<sup>th</sup> St. Flushing-bound may exit at 74<sup>th</sup> St. Station and take the Manhattan-bound train to 69<sup>th</sup> St.

## Staging Areas for Stair 2 Construction

- Stair 2: Occupy bus lane and relocate Q32 Bus Stop south on 69<sup>th</sup> Street.
- Staging Area 2a: Occupy 5 parking spaces (70ft.) east side of 68<sup>th</sup> St between Roosevelt Ave & 41<sup>st</sup> St.
- Staging Area 2b: Occupy 7 parking spaces (100ft.) west side of 70<sup>th</sup> St between Roosevelt Ave & 41<sup>st</sup> St.

# MTA Service and Street Impacts

## 82nd St

7



Construction & Development

# 82nd St: MTA Service and Street Impacts



## Service Impact – Manhattan-bound

- **7** train will not stop at 82nd Street Manhattan-bound platform for up to 6 months
- Customers travelling to 82<sup>nd</sup> St. Manhattan-bound may exit at 74<sup>th</sup> St. Station and take the Flushing-bound train to 82<sup>nd</sup> St.

## Staging Areas for Stair 1 Construction

- Stair 1: Maintain 5-ft pedestrian walkway around barricaded stairs (40ft.) east side of 82nd St between Roosevelt Ave and 37th Ave.
- Staging Area 1a: Occupy 4 parking spaces (50ft.) east side of 82nd St between Roosevelt Ave and 37th Ave.
- Staging Area 1b: Occupy 7 parking spaces (100ft.) west side of 83rd St between Roosevelt Ave and 37th Ave.

# 82nd St: MTA Service and Street Impacts



## Service Impact – Manhattan-bound

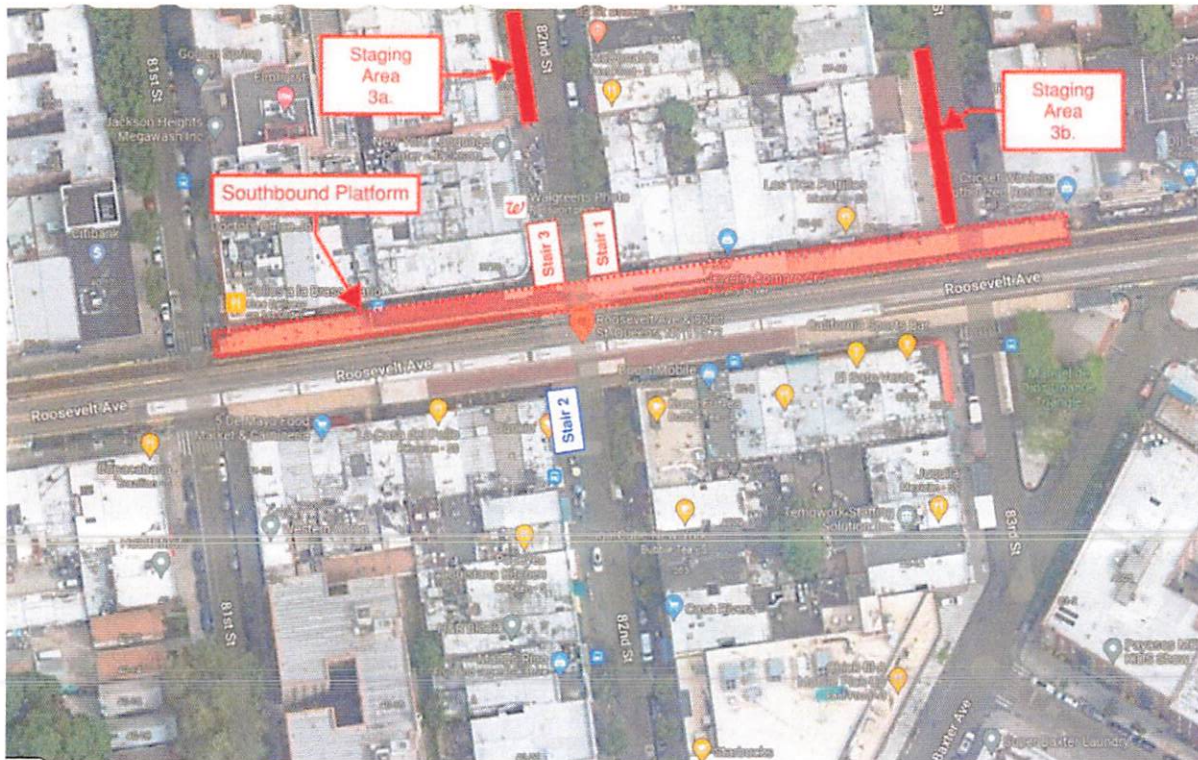
- **7** train will not stop at 82nd Street Manhattan-bound platform for up to 6 months
- Customers travelling to 82<sup>nd</sup> St. Manhattan-bound may exit at 74<sup>th</sup> St. Station and take the Flushing-bound train to 82<sup>nd</sup> St.

## Staging Areas for Stair 1 Construction

- Stair 1: Maintain 5-ft pedestrian walkway around barricaded stairs (40ft.) east side of 82<sup>nd</sup> St between Roosevelt Ave and 37<sup>th</sup> Ave.
- Staging Area 1a: Occupy 4 parking spaces (50ft.) east side of 82<sup>nd</sup> St between Roosevelt Ave and 37<sup>th</sup> Ave.
- Staging Area 1b: Occupy 7 parking spaces (100ft.) west side of 83<sup>rd</sup> St between Roosevelt Ave and 37<sup>th</sup> Ave.



# 82nd St: MTA Service and Street Impacts



## Service Impact – Manhattan-bound

- **7** train will not stop at 82nd Street southbound platform for up to 6 months
- Customers travelling to 82nd St. Manhattan-bound may exit at 74th St. Station and take the Flushing-bound train to 82nd St.

## Staging Areas for Stair 3 Construction

- Stair 3: Maintain 5-ft pedestrian walkway around barricaded stairs on sidewalk (40ft.) west side of 82nd St between Roosevelt Ave and 37th Ave.
- Staging Area 3a: Occupy 4 parking spaces (50ft.) west side of 82nd St between Roosevelt Ave and 37th Ave.
- Staging Area 3b: Occupy 7 parking spaces (100ft.) west side of 83rd St between Roosevelt Ave and 37th Ave.

# 82nd St: MTA Service and Street Impacts



## Service Impact – Manhattan-bound

- **7** train will not stop at 82nd Street southbound platform for up to 6 months
- Customers travelling to 82<sup>nd</sup> St. Manhattan-bound may exit at 74<sup>th</sup> St. Station and take the Flushing-bound train to 82<sup>nd</sup> St.

## Staging Areas for Stair 3 Construction

- Stair 3: Maintain 5-ft pedestrian walkway around barricaded stairs on sidewalk (40ft.) west side of 82<sup>nd</sup> St between Roosevelt Ave and 37<sup>th</sup> Ave.
- Staging Area 3a: Occupy 4 parking spaces (50ft.) west side of 82<sup>nd</sup> St between Roosevelt Ave and 37<sup>th</sup> Ave.
- Staging Area 3b: Occupy 7 parking spaces (100ft.) west side of 83<sup>rd</sup> St between Roosevelt Ave and 37<sup>th</sup> Ave.

# 82nd St: MTA Service and Street Impacts



## Service Impact – Flushing-bound

- **7** train will not stop at 82nd Street Flushing-bound platform for up to 6 months
- Customers travelling to 82<sup>nd</sup> St. Flushing-bound may exit at 90<sup>th</sup> St. Station and take the Manhattan-bound train to 82<sup>nd</sup> St.

## Staging Areas for Stair 2 Construction

- Stair 2: Maintain 5-ft pedestrian walkway around barricaded stairs on sidewalk (40ft.) & Occupy 6 parking spaces (80ft.) west side of 82nd St between Roosevelt Ave and 41st Ave.
- Staging Area 2: Occupy 6 parking spaces (80ft.) east side of 81st St between Roosevelt Ave and 41st Ave.

# 82nd St: MTA Service and Street Impacts



## Service Impact – Flushing-bound

- **7** train will not stop at 82nd Street Flushing-bound platform for up to 6 months
- Customers travelling to 82<sup>nd</sup> St. Flushing-bound may exit at 90<sup>th</sup> St. Station and take the Manhattan-bound train to 82<sup>nd</sup> St.

## Staging Areas for Stair 2 Construction

- Stair 2: Maintain 5-ft pedestrian walkway around barricaded stairs on sidewalk (40ft.) & Occupy 6 parking spaces (80ft.) west side of 82nd St between Roosevelt Ave and 41st Ave.
- Staging Area 2: Occupy 6 parking spaces (80ft.) east side of 81st St between Roosevelt Ave and 41st Ave.

# MTA Service and Street Impacts

## 103rd St

7



Construction & Development

# 103rd St: Street and Platform Impacts



## Service Impact – Manhattan-bound

- **7** train will not stop at 103rd Street Manhattan-bound platform for up to 7 months
- Customers travelling to 103rd St. Manhattan-bound may exit at Junction Blvd Station and take the Flushing-bound train to 103rd St.

## Staging Areas for Stair 2 & 4 Construction

- Stair 2 & 4: Maintain 5-ft walkway on sidewalk & occupy 7 parking spaces (100ft.) westbound on Roosevelt Ave between 103rd & 104th St.
- Staging Area 2a: Occupy 5 parking spaces (65ft.) west side of 103rd St between Roosevelt Ave & 39th Ave.
- Staging Area 2b: Occupy 6 parking spaces (90ft.) east side of 104th St between Roosevelt Ave & 39th Ave.

# 103rd St: Street and Platform Impacts



## Service Impact – Manhattan-bound

- **7** train will not stop at 103rd Street Manhattan-bound platform for up to 7 months
- Customers travelling to 103<sup>rd</sup> St. Manhattan-bound may exit at Junction Blvd Station and take the Flushing-bound train to 103<sup>rd</sup> St.

## Staging Areas for Stair 2 & 4 Construction

- Stair 2 & 4: Maintain 5-ft walkway on sidewalk & occupy 7 parking spaces (100ft.) westbound on Roosevelt Ave between 103rd & 104th St.
- Staging Area 2a: Occupy 5 parking spaces (65ft.) west side of 103rd St between Roosevelt Ave & 39th Ave.
- Staging Area 2b: Occupy 6 parking spaces (90ft.) east side of 104th St between Roosevelt Ave & 39th Ave.

# 103rd St: Street and Platform Impacts



## Service Impact – Flushing-bound

- **7** train will not stop at 103rd Street Flushing-bound platform for up to 7 months
- Customers travelling to 103<sup>rd</sup> St. Flushing-bound may exit at 111<sup>th</sup> St. Station and take the Manhattan-bound train to 103<sup>rd</sup> St.

## Staging Areas for Stair 1 & 3 Construction

- Stair 1 & 3: Maintain 5-ft pedestrian walkway on sidewalk (100ft.) eastbound on Roosevelt Ave between 103rd & 104th St. Does not affect road traffic.
- Staging Area 1: Occupy 5 parking spaces (75ft.) east side of National St between Roosevelt Ave & 41st Ave.



# 103rd St: Street and Platform Impacts



## Service Impact – Flushing-bound

- **7** train will not stop at 103rd Street Flushing-bound platform for up to 7 months
- Customers travelling to 103<sup>rd</sup> St. Flushing-bound may exit at 111<sup>th</sup> St. Station and take the Manhattan-bound train to 103<sup>rd</sup> St.

## Staging Areas for Stair 1 & 3 Construction

- Stair 1 & 3: Maintain 5-ft pedestrian walkway on sidewalk (100ft.) eastbound on Roosevelt Ave between 103rd & 104th St. Does not affect road traffic.
- Staging Area 1: Occupy 5 parking spaces (75ft.) east side of National St between Roosevelt Ave & 41st Ave.

# MTA Service and Street Impacts

## 111th St

7



Construction & Development

# 111th St: MTA Service and Street Impacts



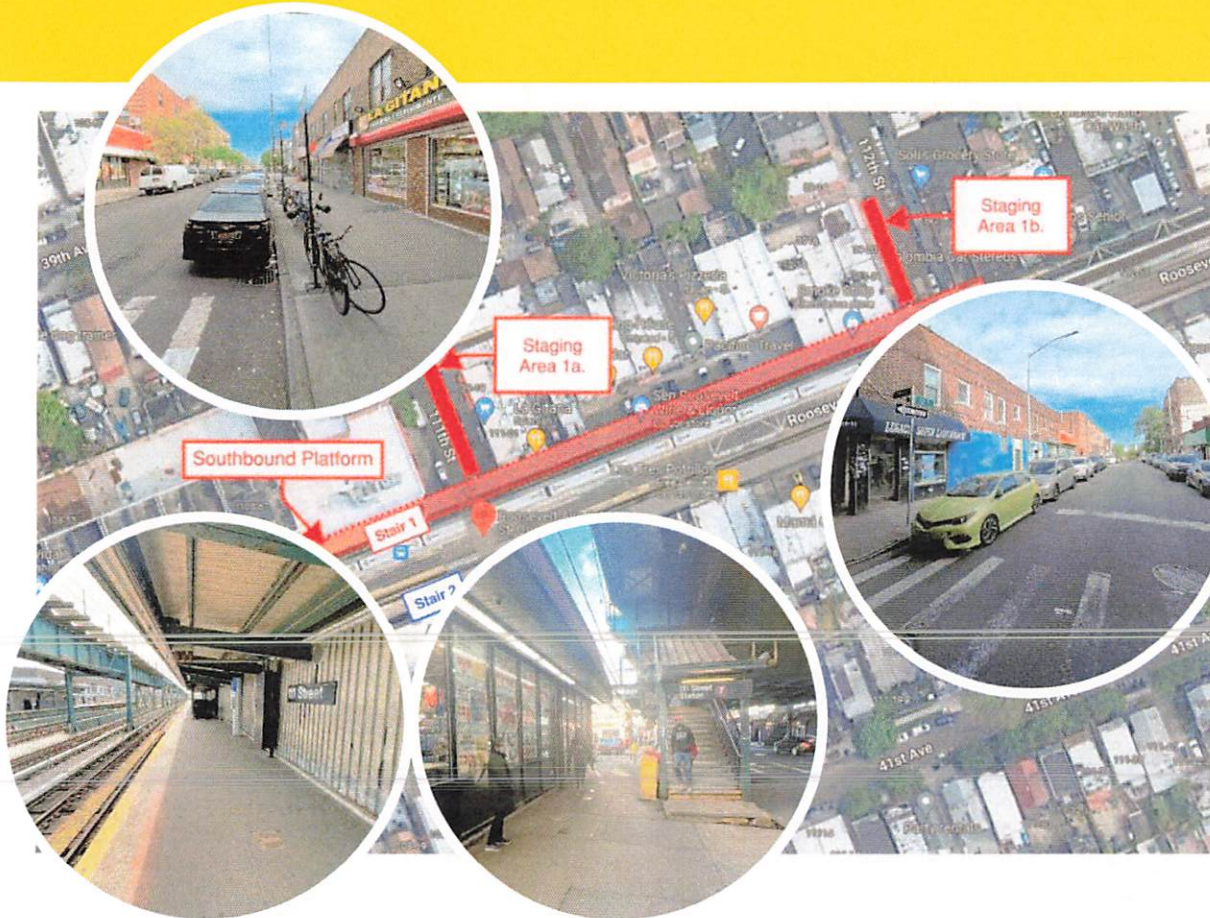
## Service Impact – Manhattan-bound

- 7 train will not stop at 111th Street Manhattan-bound platform for up to 6 months
- Customers travelling to 111<sup>th</sup> St. Manhattan-bound may exit at 103<sup>rd</sup> St. Station and take the Flushing-bound train to 111<sup>th</sup> St.

## Staging Areas for Stair 1 Construction

- Stair 1: Occupy bus lane and relocate Q48 bus stop west on Roosevelt Ave.
- Staging Area 1a: Occupy 6 parking spaces (90ft.) east side of 111th St between Roosevelt Ave and 39th Ave.
- Staging Area 1b: Occupy 6 parking spaces (80ft.) west side of 112th St between Roosevelt Ave and 39th Ave.

# 111th St: MTA Service and Street Impacts



## Service Impact – Manhattan-bound

- **7** train will not stop at 111th Street Manhattan-bound platform for up to 6 months
- Customers travelling to 111<sup>th</sup> St. Manhattan-bound may exit at 103<sup>rd</sup> St. Station and take the Flushing-bound train to 111<sup>th</sup> St.

## Staging Areas for Stair 1 Construction

- Stair 1: Occupy bus lane and relocate Q48 bus stop west on Roosevelt Ave.
- Staging Area 1a: Occupy 6 parking spaces (90ft.) east side of 111th St between Roosevelt Ave and 39th Ave.
- Staging Area 1b: Occupy 6 parking spaces (80ft.) west side of 112th St between Roosevelt Ave and 39th Ave.

# 111th St: MTA Service and Street Impacts



## Service Impact – Flushing-bound

- **7** train will not stop at 111th Street Flushing-bound platform for up to 6 months
- Customers travelling to 111th St. Flushing-bound may exit at Mets-Willets Point Station and take the Manhattan-bound train to 111th St.

## Staging Areas for Stair 2 Construction

- Stair 2: Maintain 5-ft pedestrian walkway on sidewalk
- Staging Area 2a: Occupy 4 parking spaces (50ft.) eastbound on Roosevelt Ave between 111th & 110th St.
- Staging Area 2b: Occupy 6 parking spaces (90ft.) west side of 111th St between Roosevelt Ave and 41st Ave.

# 111th St: MTA Service and Street Impacts



## Service Impact – Flushing-bound

- **7** train will not stop at 111th Street Flushing-bound platform for up to 6 months
- Customers travelling to 111th St. Flushing-bound may exit at Mets-Willets Point Station and take the Manhattan-bound train to 111th St.

## Staging Areas for Stair 2 Construction

- Stair 2: Maintain 5-ft pedestrian walkway on sidewalk
- Staging Area 2a: Occupy 4 parking spaces (50ft.) eastbound on Roosevelt Ave between 111th & 110th St.
- Staging Area 2b: Occupy 6 parking spaces (90ft.) west side of 111th St between Roosevelt Ave and 41st Ave.

# 111th St: MTA Service and Street Impacts



## Service Impact – Flushing-bound

- **7** train will not stop at 111th Street Flushing-bound platform for up to 6 months
- Customers travelling to 111th St. Flushing-bound may exit at Mets-Willets Point Station and take the Manhattan-bound train to 111th St.

## Staging Areas for Stair 3 Construction

- Stair 3: Occupy bus lane and relocate Q48 bus stop east on Roosevelt Ave.
- Staging Area 3: Occupy 6 parking spaces (90ft.) west side of 111th St between Roosevelt Ave and 41st Ave

# 111th St: MTA Service and Street Impacts



## Service Impact – Flushing-bound

- **7** train will not stop at 111th Street Flushing-bound platform for up to 6 months
- Customers travelling to 111<sup>th</sup> St. Flushing-bound may exit at Mets-Willets Point Station and take the Manhattan-bound train to 111<sup>th</sup> St.

## Staging Areas for Stair 3 Construction

- Stair 3: Occupy bus lane and relocate Q48 bus stop east on Roosevelt Ave.
- Staging Area 3: Occupy 6 parking spaces (90ft.) west side of 111th St between Roosevelt Ave and 41st Ave



# Minimizing Business and Street Vendor Impact

- Contractor and the MTA will work closely with the local businesses and street vendors to mitigate impacts
- Access to deliveries and essential services will be maintained throughout the duration of the project
- Signage will be posted around barricades and work site informing pedestrians and customers that stores are open for business.
- Will communicate with vendors and their representatives on areas that will need to barricade during construction and for pedestrian safety.

# Community Outreach

- Contractor, once chosen, will post multilingual project signage and information available to customers
- Notifications regarding service impacts and project information will be provided well in advance in and around the stations
- Project Contacts:
  - Lucille Songhai, [Lucille.Songhai@nyct.com](mailto:Lucille.Songhai@nyct.com)
  - Danny Randall, [Daniel.Randell@mtahq.org](mailto:Daniel.Randell@mtahq.org)

**Community Outreach**

**THANK YOU!**

