



ADA Accessibility Upgrade and Station Improvements at 8 Stations

Queens Community Board 2 **Tuesday, May 3rd**

8 Stations Accessibility Upgrades Bundle Project Intent

- This bundle of 8 stations is part of a larger ADA Accessibility project throughout NYC
- Structural rehabilitation
- Systems upgrades
- Design-build contract awarded December 2021
- Start Date: January 26, 2022
- Completion: September 2024



8 Stations Accessibility Upgrades Bundle

Project Descriptions

Station	Project Description	# of Elevators	Trains	Line	Boro
8 th Ave	ADA elevator	1	N	Sea Beach	Bk
Woodhaven Blvd	ADA elevators and Station Improvements	2	J,Z	Jamaica	Q
Westchester Square	ADA elevators and Station Improvements	3	6	Pelham	Bx
181 st Street	ADA elevators	2	A	8 th Avenue	M
Marcy Ave	Elevator replacements	2	J,M,Z	Jamaica	Bk
Flushing Ave	Elevator replacements	3	J,M	Jamaica	Bk
Court Square	ADA elevators	1	G	Crosstown	Q
Queensboro Plaza	ADA elevators	2	7,N,W	Astoria/Flushing	Q



Construction & Development

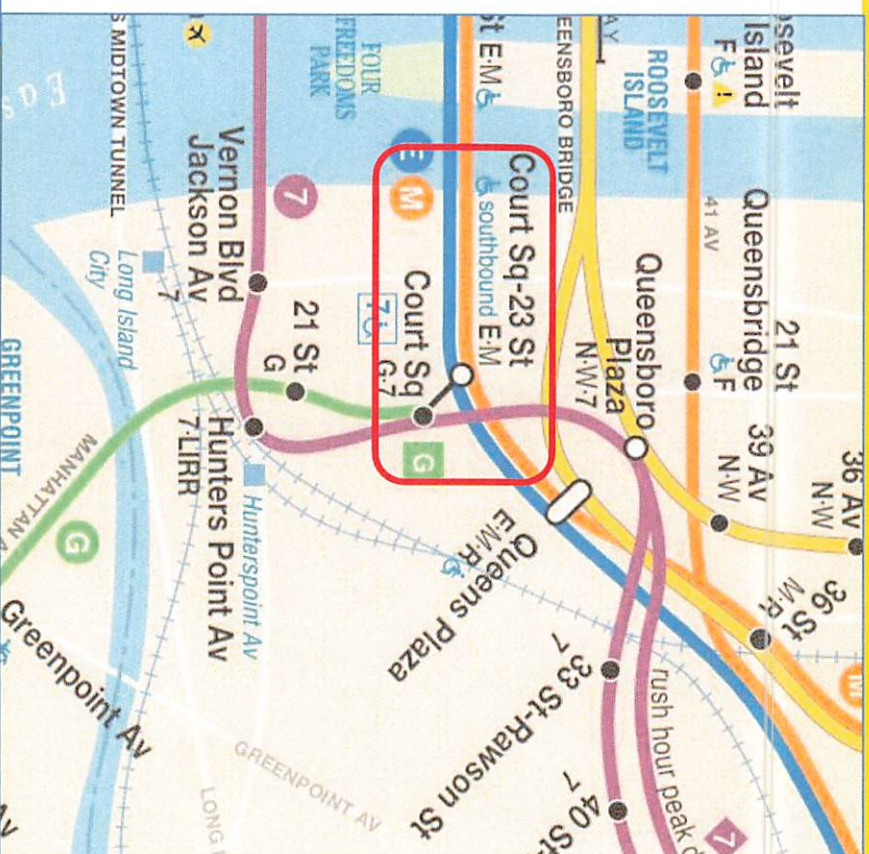
Accessibility Upgrades at Court Square Station



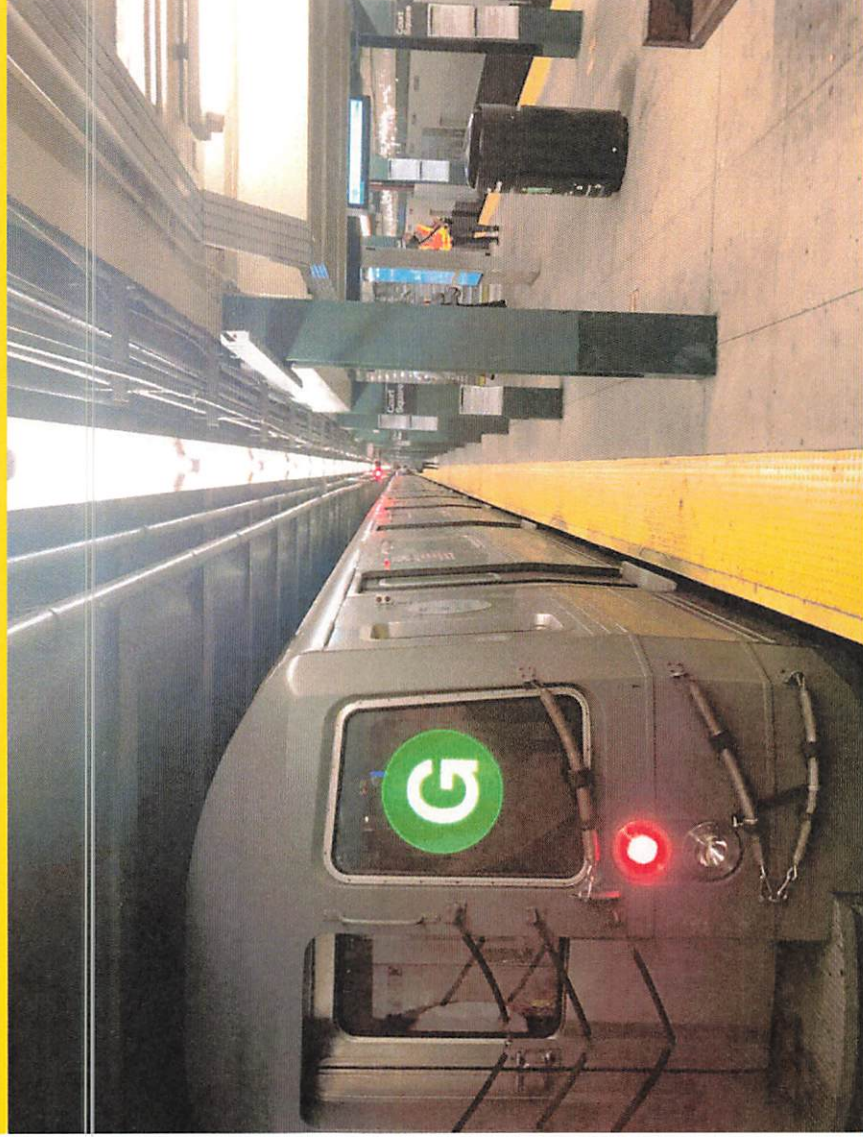
8 Stations Accessibility Upgrades Bundle Project Intent

Court Sq Station is below ground on the Crosstown Line on 23rd Street in Queens **G**

It is part of a Station Complex with connections to Court Sq-23rd St Station **E M** & Court Sq Station **7**



Customer Benefits – ADA Scope



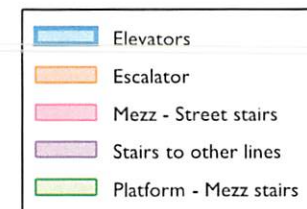
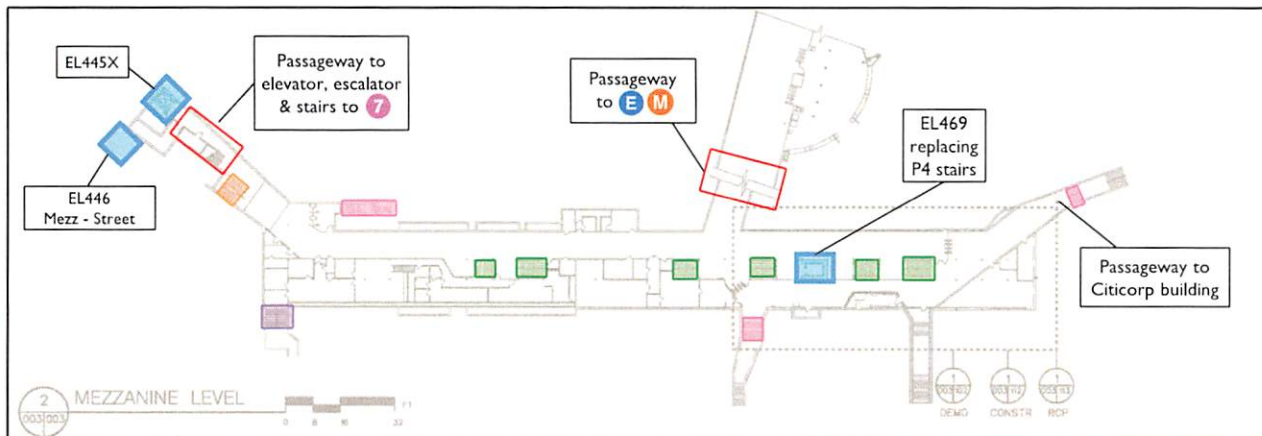
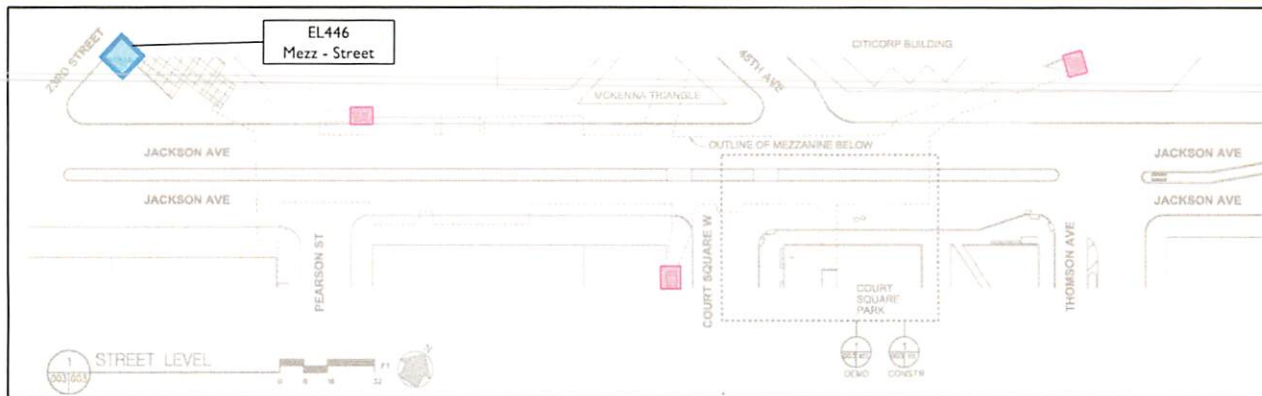
- Improved station components - ADA
 - New elevator (mezz to platform)
 - Reconstruction of platform edges
 - Upgrades to communication systems

Customer Benefits – General Scope

- Fire alarm and new CCTV
- Public address system and signage
- Upgrade lighting fixtures

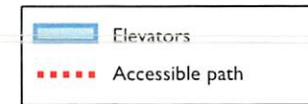
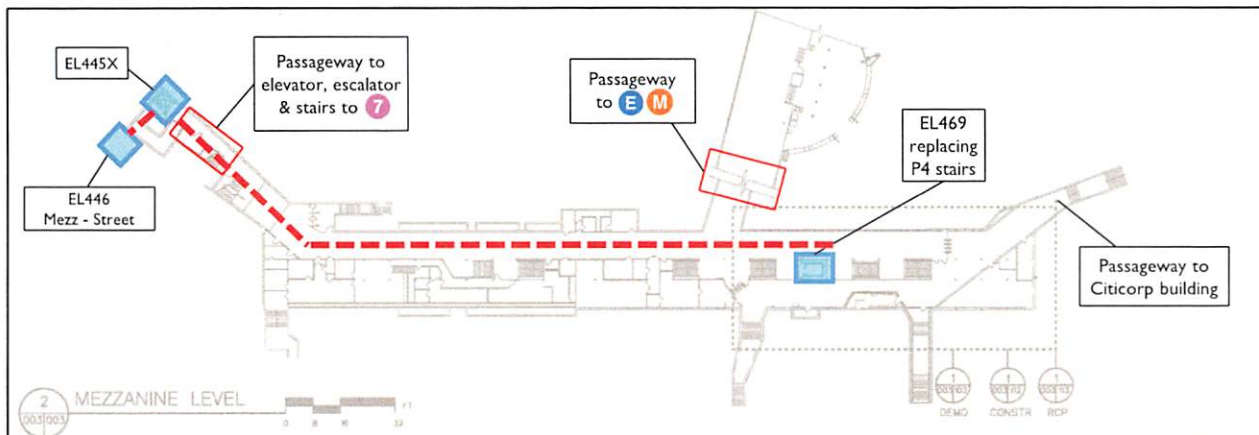
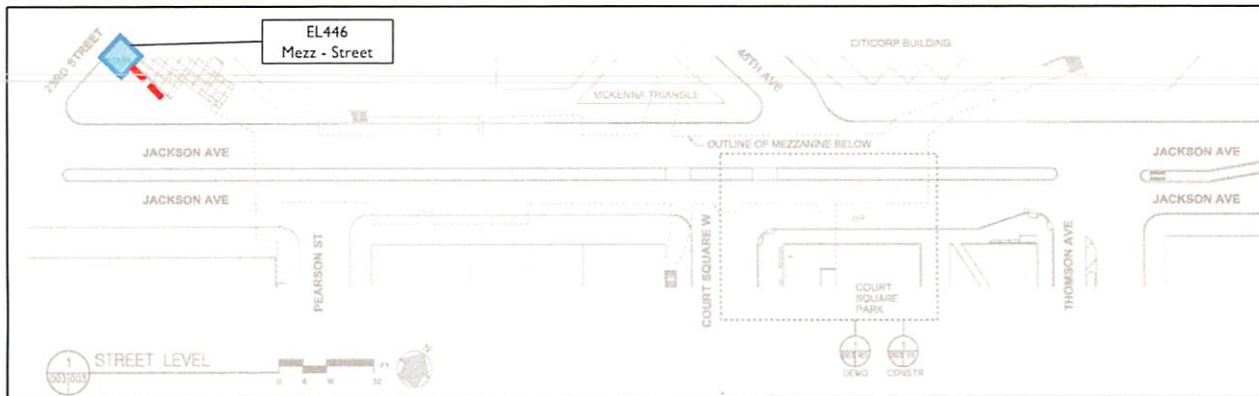


Elevator Locations and Access Points



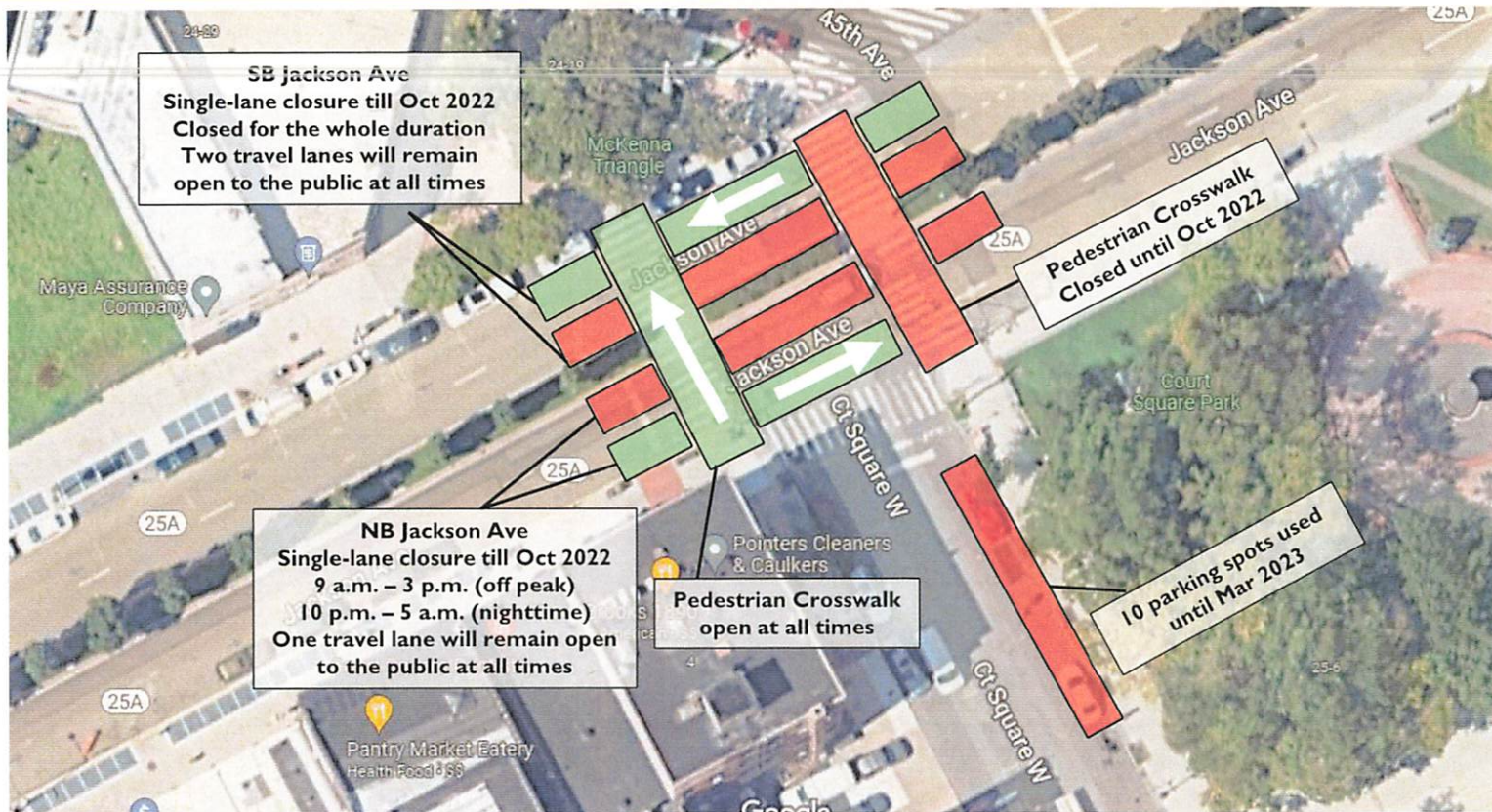
- Existing Street-Mezzanine **EL446** on Jackson Ave and 23rd Street for **7**
- New Mezzanine-Platform **EL469** replaces Stair P4 for **G**

Accessible Glide Path



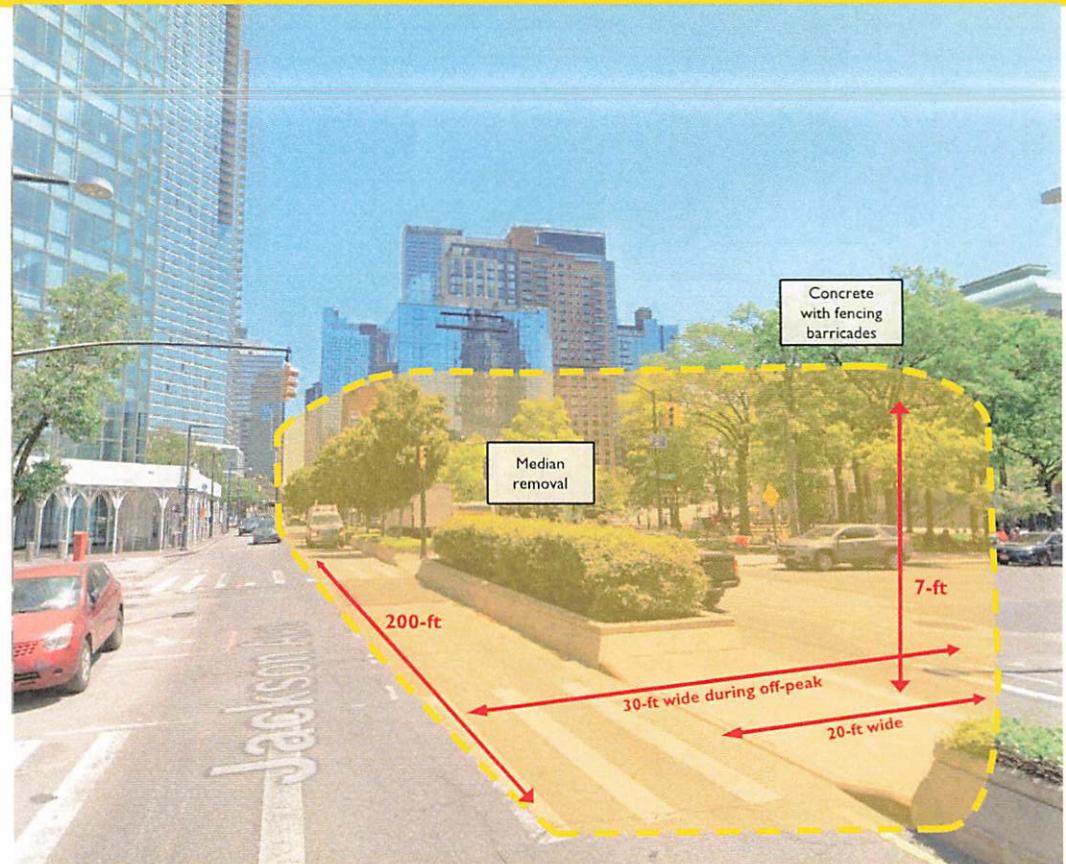
- Accessible pathway will connect from Jackson Ave and 23rd Street by **EL446** and **EL445X** to new Mezzanine-Platform **EL469** located below median on Jackson Avenue
- **E M** Manhattan-bound platform accessible by **EL482X** on 44th Drive and 23rd Street

Street Level Impacts: May 2022



Street Level Work

- Temporary removal of Jackson Avenue Median to provide access for elevator shaft construction and hauling of materials
 - Approximately 20ft during peak hours while working in one travel lane
 - Approximately 30ft during off peak hours when extra lane is taken
- Installation of 7ft tall concrete barriers with fencing
- Coordination with Long Island City Business Improvement District to restore median after construction to its existing condition



Service Impacts and Alternatives

G train service will not be available at Court Sq, 21 St and Greenpoint Av stations during weekends (10:00pm Fri – 5:00am Mon.)

Anticipated to begin Summer 2022. Preliminary Service Plan (subject to change):

- 8 weekends:

No **G** service available between Nassau Av and Court Sq

Shuttle busses to provide service to impacted stations

Signage with alternative service options will be posted in stations prior to outages.

Court Square Station Schedule

Location	Activity	Dates
Elevator Mezzanine → Platform	Maintain and Protect Utilities	May 2022 – October 2022
	Excavation	May 2022 – October 2022
	Structural work	May 2022 – December 2022
	Elevator Installation	September 2022 – March 2023



Construction & Development

Accessibility Upgrades at Queensboro Plaza Station

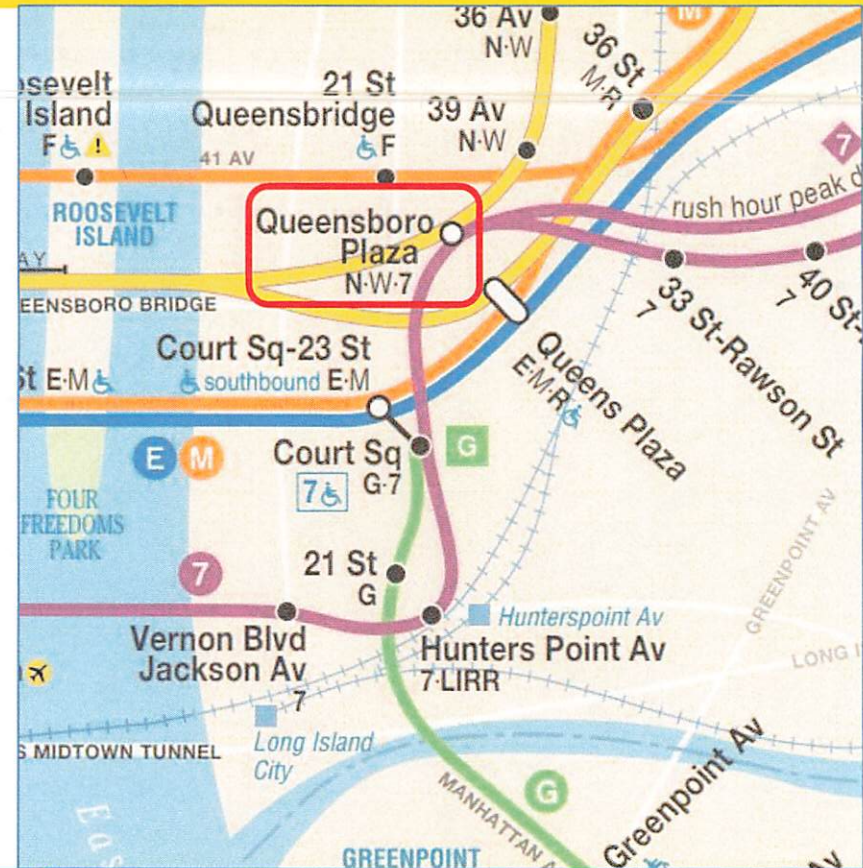


8 Stations Accessibility Upgrades Bundle

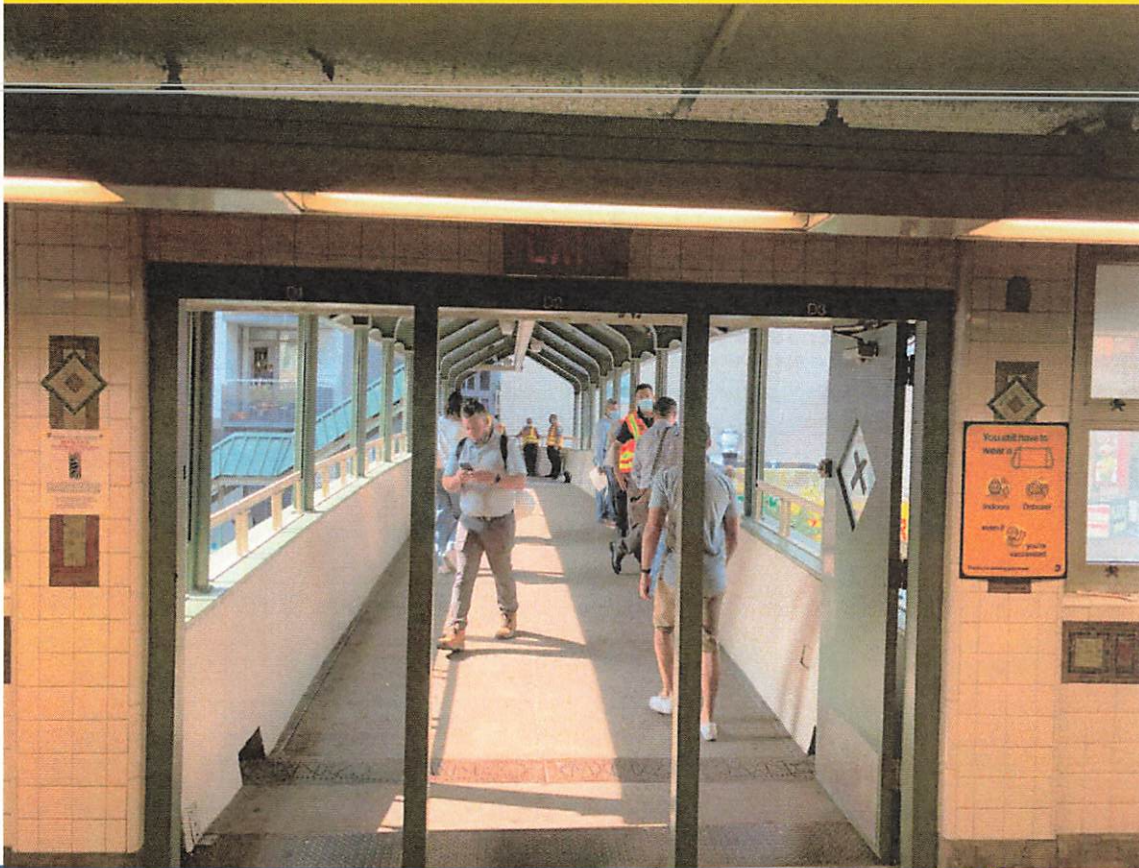
Project Intent

The Queensboro Plaza Station is an elevated station on the Flushing and Astoria lines

It is located east of the Queensboro Bridge in Queens



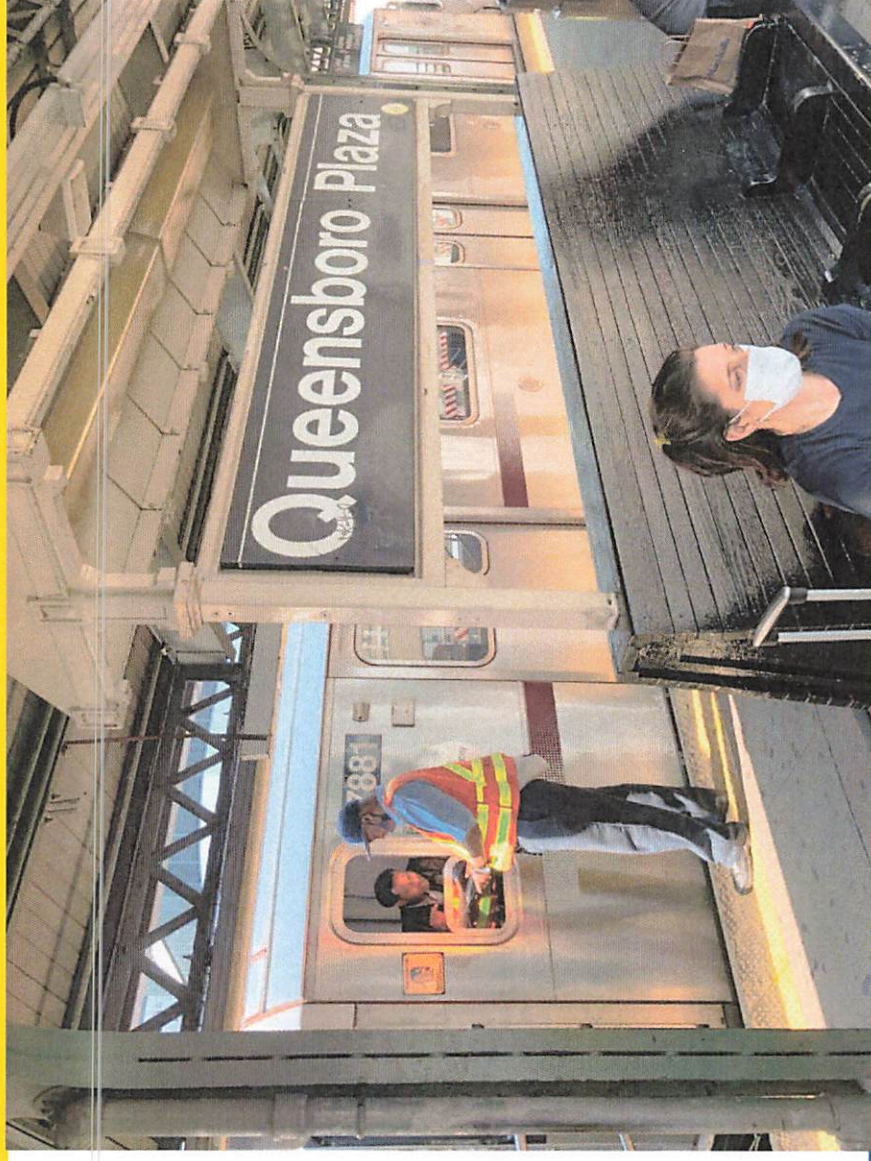
Customer Benefits – ADA Scope



- Improved station components - ADA
 - New elevators (one street-mezz and one mezz-platforms)
7 N W
 - New ADA boarding areas, including new platform edges
 - New ADA ramp at mezzanine level
 - Modified pedestrian bridges
 - Mezzanine enlargement
 - ADA upgrades for existing street and station stairs

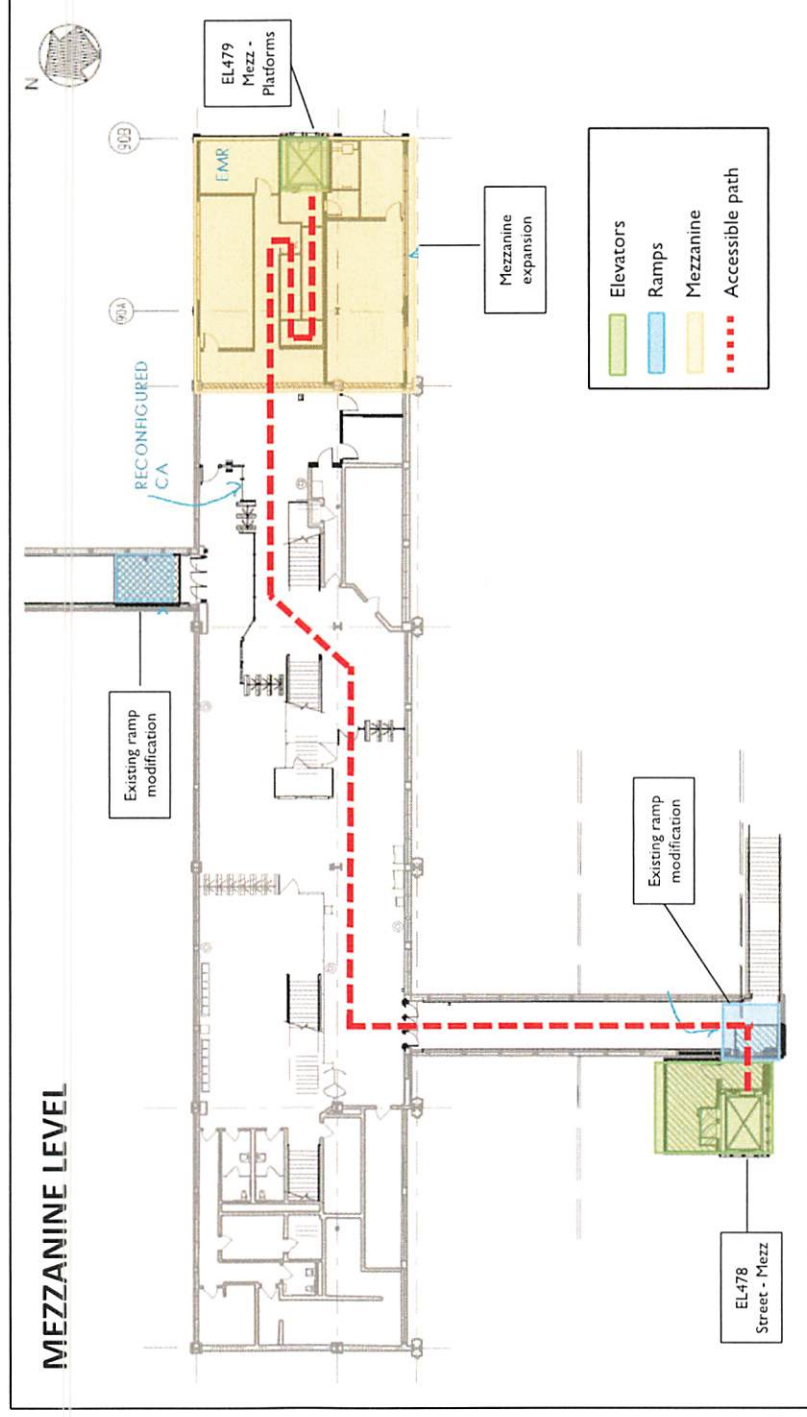
Customer Benefits – General Scope

- Mezzanine widening to the east expands public area
- Fire alarm and new CCTV
- New public address system
- Digital customer information screens

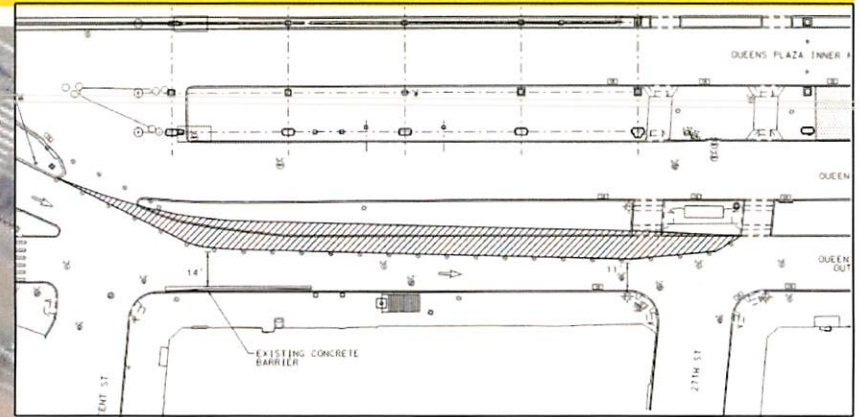
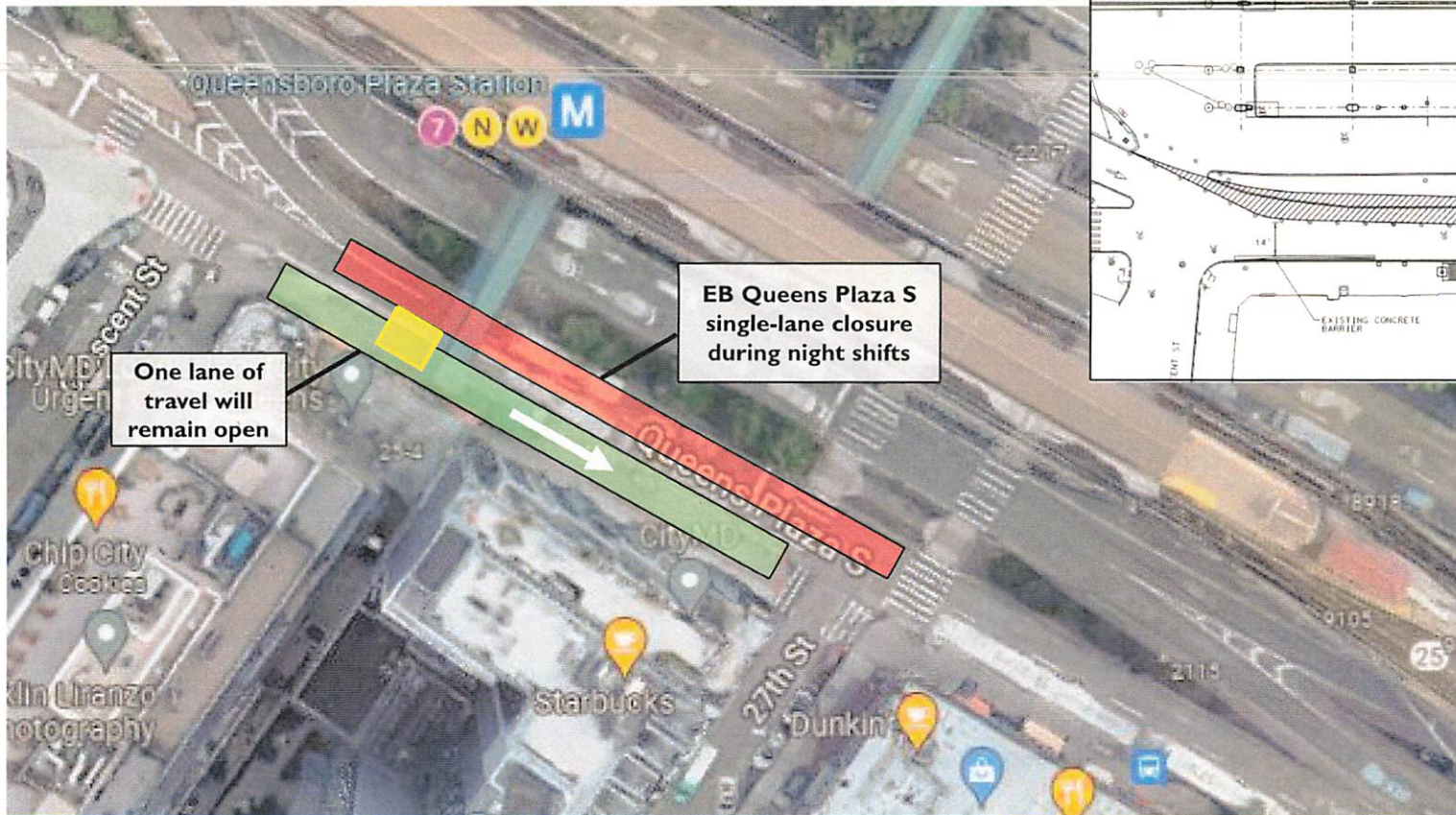


Elevator Locations and Mezzanine Expansion

- Mezzanine is being expanded east approx. 50ft
- Improves station circulation flow
- New lighting for new mezzanine
- Improve control area
- Ramp modifications



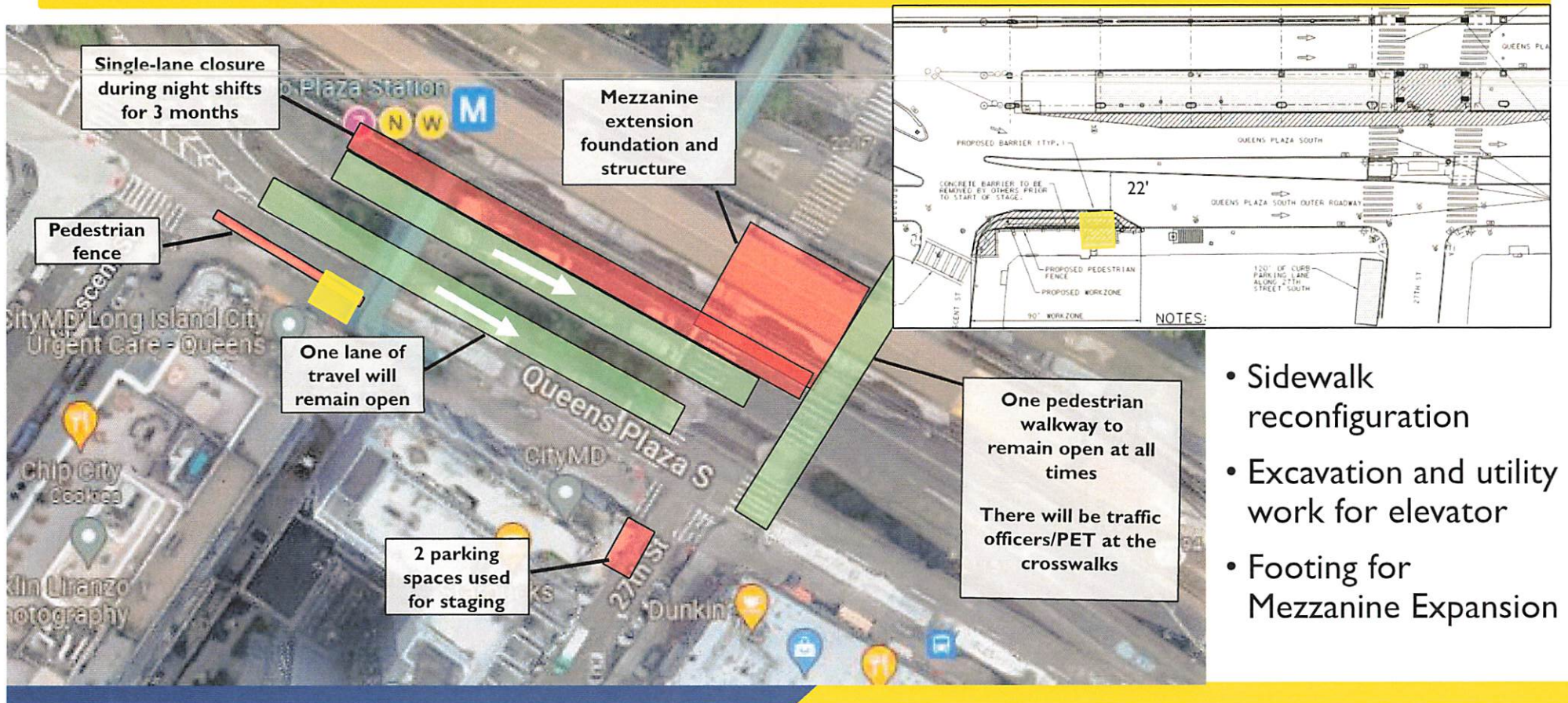
Street Level Impacts: May 2022



- Queens Plaza South median curb reduction

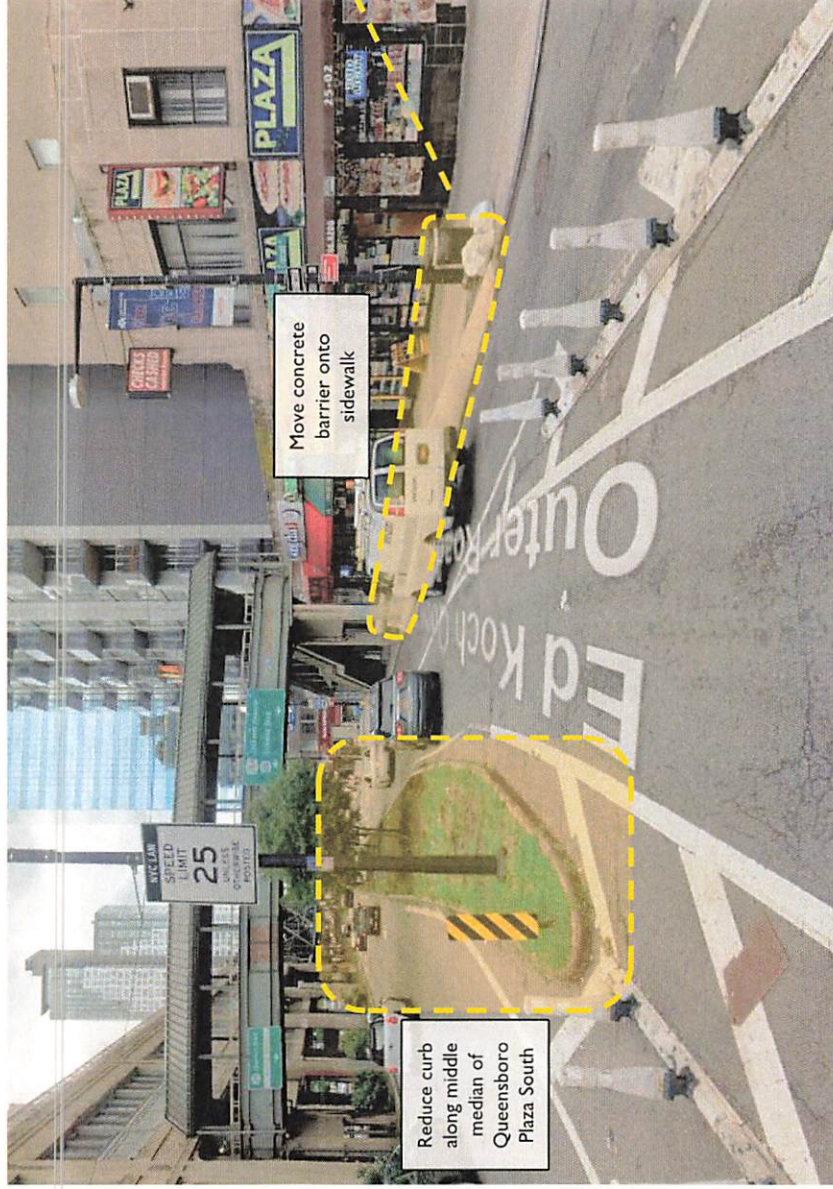
Working hours:
10:00pm – 5:00am
and will reopen during the day

Street Level Impacts: May 2022 (Continued)



- Sidewalk reconfiguration
- Excavation and utility work for elevator
- Footing for Mezzanine Expansion

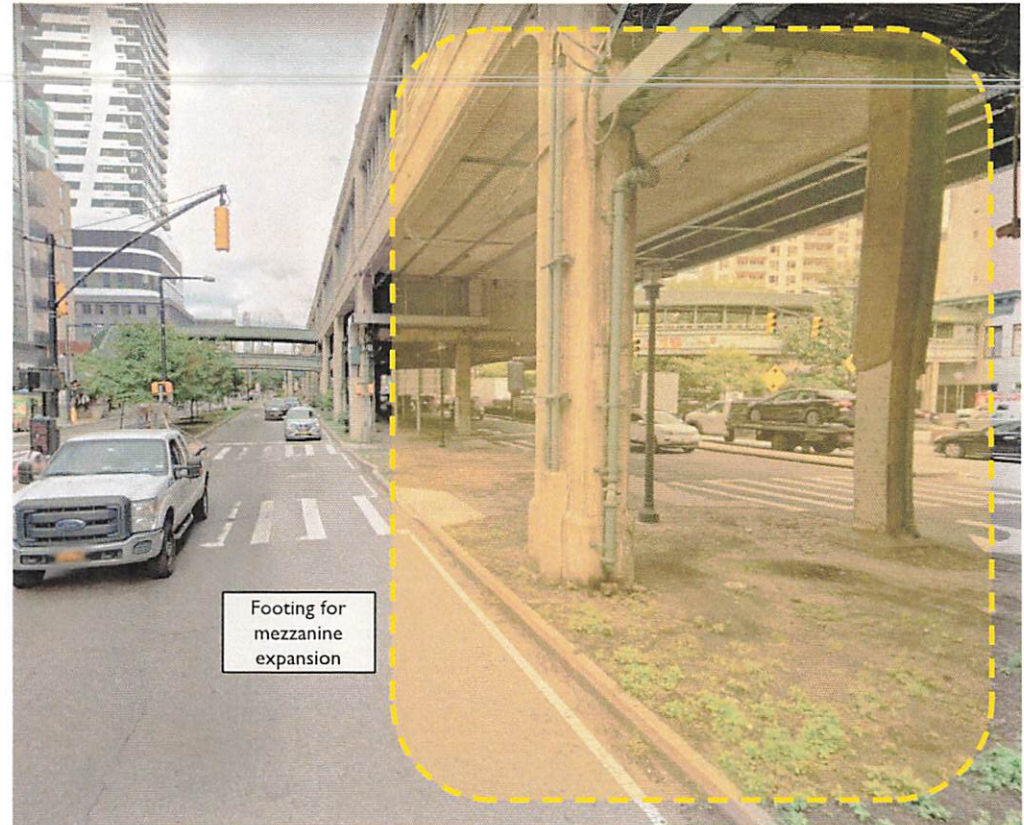
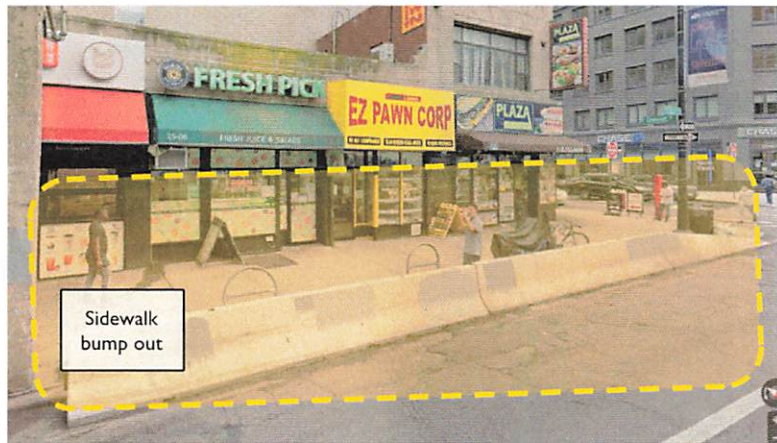
Projected Work



- Queens Plaza South median curb reduction

Projected Work

- Mezzanine Expansion
- Sidewalk bump out for Street to Mezzanine elevator installation



Street Elevator Location: Before



Street Elevator Location: After



Rendering of
Queensboro Plaza
Station – Queens
Plaza South Street to
Mezzanine Elevator

FOR ILLUSTRATIVE PURPOSES ONLY

Service Impacts and Alternatives

7 **N** **W** train service impacts during weekends (4:00am Sat – 10pm Sun.)

Anticipated in 2023-2024. Preliminary Service Plan (subject to change):

- 10 weekends, Queensboro Plaza Station Complex Closure:

- **7** train service between Flushing-Main St and 74 St-Broadway only

- **N** train service between Stillwell Av and Forest Hills-71 Av via Queens Blvd **R** Local Shuttle Train service between Ditmars Blvd and 39 Av

Alternate Service Options from Queens Plaza and Queensboro Plaza:

- Shuttle busses run to Vernon Blvd-Jackson Av

- Shuttle busses run to 74 St-Broadway for **7** service to Flushing-Main St

- Shuttle busses run between 36 St **R** and 39 Av **N** for shuttle train service to Ditmars Blvd

Service Impacts and Alternatives (Continued)

7 **N** **W** train service impacts during weekends (4:00am Sat – 10pm Sun.)

Anticipated in 2023-2024. Preliminary Service Plan (subject to change):

- 8 weekends: No **7** service between Manhattan and Queensboro Plaza
Shuttle busses run between Queensboro Plaza and Vernon-Jackson Av
Use **N** for service to Manhattan, Shuttle busses operate Times Sq to 34 St-Hudson Yards
- 4 weekends: No **N** service between Ditmars Blvd and Queensboro Plaza
Shuttle busses run between Queensboro Plaza and Ditmars Blvd
- 4 weekends: No **N** service between Queensboro Plaza and Times Square
N Shuttle Train between Ditmars Blvd and Queensboro Plaza
Use **7** for service to Manhattan

Queensboro Station Schedule

Location	Activity	Dates
Street Elevator Street → Mezzanine	Utility work (ConEd, DEP)	May 2022 – January 2023
	Underpinning/excavation	May 2022 – September 2022
	Structural work	January 2023
	Elevator Installation	October 2023 – September 2024
Platform Elevator Mezzanine → Platforms	Utility Work	March 2023 – May 2023
	Underpinning/excavation	June 2023 – July 2023
	Structural work	August 2023 – September 2023
	Elevator Installation	December 2023 – September 2024
Street	Curb Reconstruction	May 2022 – July 2022
Mezzanine	Expansion	September 2023 – September 2024
	Pedestrian Bridge	November 2022 – August 2023
Lower Platform	New ADA boarding area, edges	January 2024 – February 2024
Upper Platform	New ADA boarding area, edges	January 2024 – February 2024

Feel Free to Reach Out if You Want to Learn More!

How to get in touch with us:

- Project email address: 8SubwayStationADAImprovements@samschwartz.com
 - Distribute Construction Bulletins and Newsletters
 - Receive and respond to complaints and issues from the public
- Project Hotline: 646-801-3932
 - Receive and respond to non-emergency complaints and issues from the public
- MTA Community Relations Representative
 - Lucille Songhai: Lucille.Songhai@nyct.com

Questions/Comments?

