

***Statements of Community
District Needs
and
Community Board
Budget Requests***

Fiscal Year
2019



Submitted to:
NYC
PLANNING
January 2018

**Queens
Community District 04**

INTRODUCTION

The annual Statements of Community District Needs (CD Needs Statements) and Community Board Budget Requests (Budget Requests) are Charter mandates that form an integral part of the City's budget process. Together, they are intended to support communities in their ongoing consultations with city agencies, elected officials and other key stakeholders and influence more informed decision making on a broad range of local planning and budget priorities. This report also provides a valuable public resource for neighborhood planning and research purposes, and may be used by a variety of audiences seeking information about New York City's diverse communities.

HOW TO USE THIS REPORT

This report represents Queens Community Board 4's *Statement of Community District Needs and Community Board Budget Requests for Fiscal Year (FY) 2019*. This report contains the formatted but otherwise unedited content provided by the community board, collected through an online form available to community boards from June to November 2017.

Community boards may provide substantive supplemental information together with their Statements and Budget Requests. This supporting material can be accessed by clicking on the links provided in the document or by copying and pasting them into a web browser, such as Chrome, Safari or Firefox.

If you have questions about this report or suggestions for changes please contact:

CDNEEDS_DL@planning.nyc.gov

This report is broadly structured as follows:

a) Overarching Community District Needs

Sections 1 – 4 provide an overview of the community district and the top three pressing issues affecting this district overall as identified by the community board. Any narrative provided by the board supporting their selection of their top three pressing issues is included.

b) Policy Area - Specific District Needs

Section 5 is organized by seven distinct policy areas aligned with the service and program areas of city agencies. For each policy area, community boards selected the most important issue for their districts and could provide a supporting narrative. The policy area section also includes any agency-specific needs and a list of relevant budget requests submitted by the community board. If the community board submitted additional information outside of a specific policy area, it may be found in Section 6.

c) Community Board Budget Requests

The final section includes the two types of budget requests submitted to the City for the FY19 budget cycle; one list for capital and another for expense budget requests. For each budget request, community boards were able to provide a priority number, explanation, location, and supporters. OMB remains the definitive source on budget requests submitted to city agencies.

Disclaimer

This report represents the Statements of Community District Needs and Community Board Budget Requests of Queens Community Board 4 for Fiscal Year 2019. This report contains the formatted but otherwise unedited content provided by the community board.

Budget Requests: Listed for informational purposes only. OMB remains the definitive source on budget requests and budget request responses.

Budget Priorities: Priority numbers apply to expense and capital Budget requests from all policy areas. A complete list of expense and capital budget requests by this Board sorted by priority can be found in Section 7 of this document.

Supporting Materials: Some community boards provided substantive supplemental information. This supportive material can be accessed by clicking on the links provided in the document or by copying and pasting the links provided in the Appendix into a browser.

TABLE OF CONTENTS

- 1. Community Board Information**
- 2. Community District Profile and Land Use**
- 3. Overview of Community District**
- 4. Top Three Pressing Issues Overall**
- 5. Summary of Community District Needs and Budget Requests**
 - Health Care and Human Services**
 - Youth, Education and Child Welfare**
 - Public Safety and Emergency Services**
 - Core Infrastructure, City Services and Resiliency**
 - Land Use, Housing and Economic Development**
 - Transportation**
 - Parks, Cultural and other Community Facilities**
- 6. Additional Information and Other Budget Requests**
- 7. Summary of Prioritized Budget Requests**
 - Table of All Capital Requests**
 - Table of All Expense Requests**
- Appendix - Supporting Materials**

1. Community Board Information

Queens Community Board 4

Address: 46-11 104 Street, 1st Floor

Phone: 718-760-3141

Email: ccassagnol@cb.nyc.gov

Website: nyc.gov/queenscb4

Chair: Mr. Damian Vargas

District Manager: Mr. Christian Cassagnol

2. Community District Profile

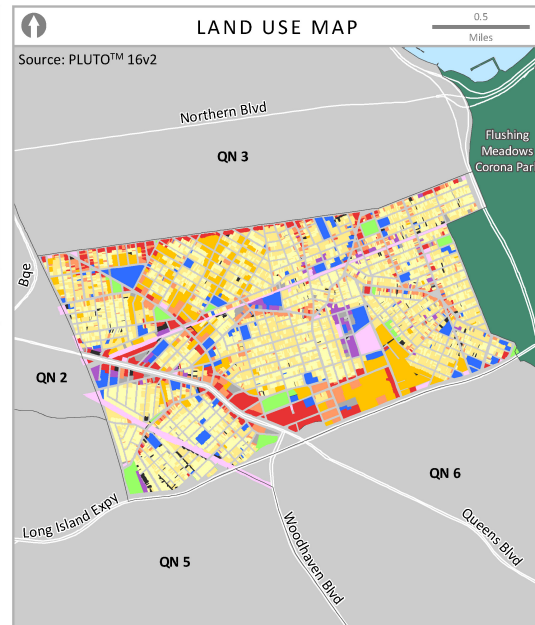
Visit the Community District Profiles to view data, maps, and other resources describing New York City's 59 community districts at: <https://communityprofiles.planning.nyc.gov/>

Queens Community District 4



Neighborhoods¹: Corona, Corona Heights, Elmhurst, Lefrak City

POPULATION & DENSITY		
2000 ²	2010 ³	2000-2010
167,005	172,598	+3%
2011-2015 Estimate ⁴		143,434
Square Miles		2.4
Population Density		71,916/sq mi



COMMUNITY BOARD PERSPECTIVES

Top 3 pressing issues identified by Queens Community Board 4 in 2017:

1. Neighborhood preservation
2. Schools
3. Traffic

To learn more, please read [Queens CD 4's Statements of Community District Needs and Community Board Budget Requests for Fiscal Year 2018](#).

Website: www.nyc.gov/queenscb4
Email: qn04@cb.nyc.gov

Land Use Category	# Lots	% Lot Area
1 & 2 Family Bldgs	4,986	28%
Multifamily Walk-up	4,854	29%
Multifamily Elevator	188	11%
Mixed Use	791	7%
Commercial	411	7%
Industrial	71	2%
Transportation/Utility	41	3%
Public/Institutional	129	7%
Open Space	24	3%
Parking	169	2%
Vacant	231	1%
Other	18	<1%

[Click here for a more detailed land use map of Queens CD 4](#)

A Snapshot of Key Community Indicators

COMMUNITY ASSETS ⁵	
Public Schools	35
Public Libraries	2
Hospitals and Clinics	6
Parks	12

[Click to visit the NYC Facilities Explorer](#)

RENT BURDEN ^{4, 6}	
Queens CD 4	Queens
55%	48%
of households spend 35% or more of their income on rent	NYC
	45%

ACCESS TO PARKS ⁷	
Queens CD 4	Citywide Target
76%	85%
of residents live within walking distance of a park or open space	

MEAN COMMUTE TO WORK ^{4, 8}	
Queens CD 4	Queens
42	43 minutes
minutes	NYC
	40 minutes

LIMITED ENGLISH PROFICIENCY ⁴	
Queens CD 4	Queens
52%	29%
of residents 5 years or older have limited English proficiency	NYC
	23%

CRIME RATE ⁹	
Queens CD 4	Queens
10.2	9.1
major felonies were reported per 1,000 residents in 2016	NYC
	11.8

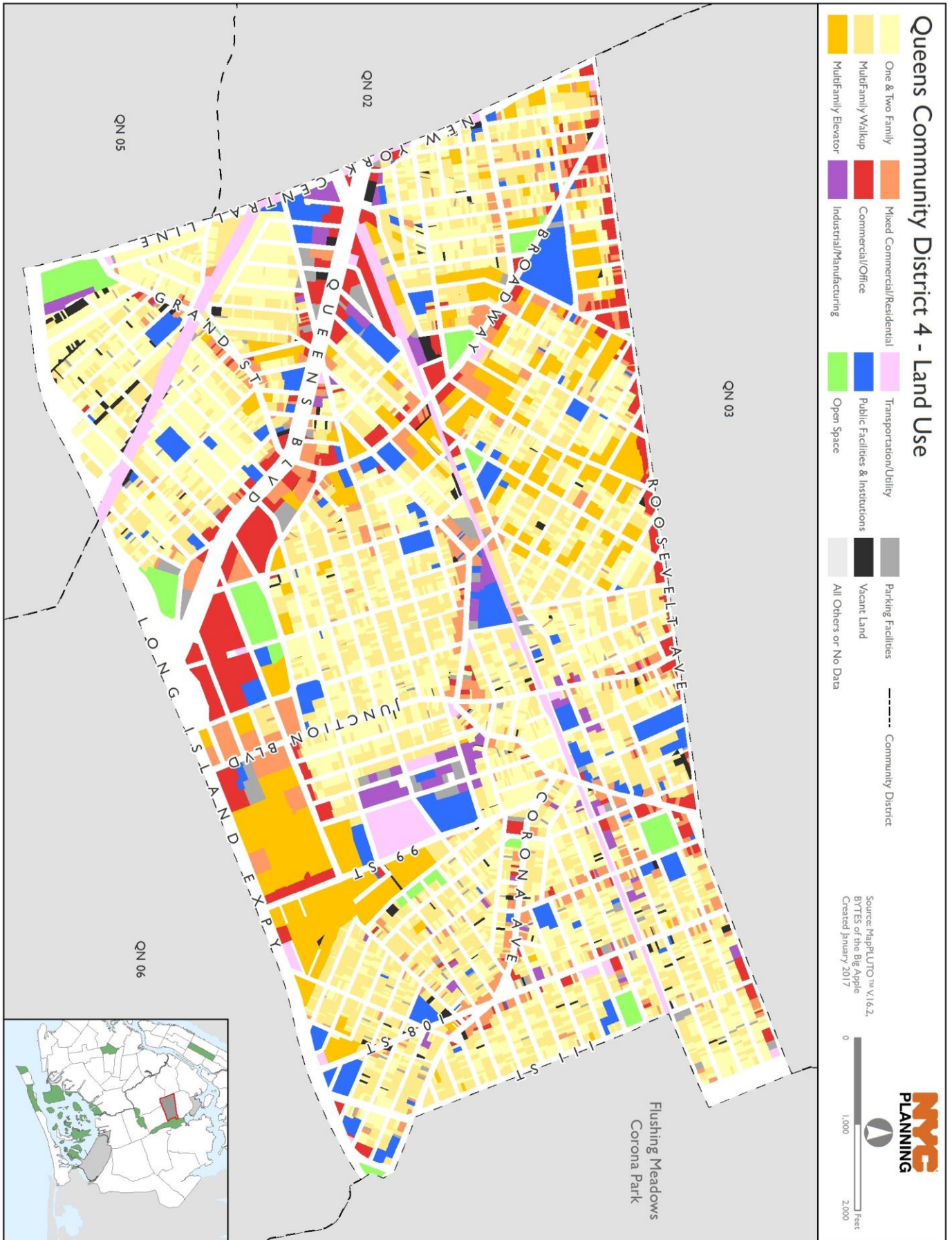
EDUCATIONAL ATTAINMENT ^{4, 10}	
Queens CD 4	Queens
22%	30%
of residents 25 years or older have earned a bachelor's degree or higher	NYC
	36%

UNEMPLOYMENT ^{4, 10}	
Queens CD 4	Queens
6.1%	8.6%
of the civilian labor force was unemployed on average from 2011 to 2015	NYC
	9.5%

NYCgov POVERTY MEASURE ¹¹	
Queens CD 4	Queens
27%	18%
of residents have incomes below the NYCgov poverty threshold. See the federal poverty rate here.	NYC
	21%

¹Neighborhoods may be in multiple districts. Names and boundaries are not officially designated. ²2000 US Census; ³2010 US Census; ⁴American Community Survey 2011-2015 5-Year Estimates, calculated for Public Use Microdata Areas (PUMAs). PUMAs are geographic approximations of community districts. ⁵NYC Dept of City Planning Facilities Database (2017); ⁶Differences of less than 3 percentage points are not statistically meaningful. ⁷NYC Dept of Parks and Recreation (DPR) (2016). DPR considers walking distance to be 1/4 mile for parks less than 6 acres, and 1/2 mile for larger parks and pools. ⁸Differences of less than 2 minutes are not statistically meaningful. ⁹NYPD CompStat, Historic Complaint Data (2017); ¹⁰Differences of less than 2 percentage points are not statistically meaningful. ¹¹2011-2015 NYCgov Poverty Measure by PUMA. This metric from the Mayor's Office for Economic Opportunity accounts for NYC's high cost of housing, as well as other costs of living and anti-poverty benefits.

2. Community District Land Use



3. Overview of Community District

Queens Community Board 4Q (CB4Q) is a culturally diverse community that encompasses the area of Corona (south of Roosevelt Avenue) and Elmhurst. The total land area of Community Board 4Q is 2.4 square miles, bounded by Roosevelt Avenue to the North, Flushing Meadow Corona Park (FMPC) to the east, the Horace Harding Expressway to the south, and New York Connecting railroad (CSX) to the West. According to the 2010 Census, at the time the population of CB4Q was 172,598 a 3.3% increase from the 2000 census.

The ongoing problem of overdevelopment continues to grow within CB#4Q. The current levels of service and infrastructure can no longer absorb the additional housing units. In order to secure the future stability of CB4Q, careful consideration must be given to the rezoning of our community.

Health Issues For several years now, CB4Q has proudly been home to two farmers markets, (Corona Plaza, and Elmhurst Hospital). Zumba classes, and other health related initiatives geared towards providing our community with the knowledge and resources they need to stay fit are happily supported throughout our constituency.

Urgent care facilities throughout the district are indeed a welcome addition as many constituents see these facilities as a cheaper, quicker alternative to the negative stigmas associated with an actual hospital. Although these facilities have gained popularity, the fact remains that the residents of the surrounding neighborhoods of Elmhurst, Corona, Maspeth, and Glendale are still in need of an actual hospital. Urgent care facilities are not made to replace hospitals, but to work in conjunction with them.

The percentage of adults (18+) medically insured within the district lies low with just 50% of the constituency having public medical insurance, and only 3% privately. We will continue to support public campaigns emphasizing the importance and the need for quality health insurance and preventive measures. It is important to note that depending on the neighborhood, the percentage of those able to speak English "less than very well" ranges anywhere from 37% to a staggering 79%, so emphasis must be put into providing this information in multiple languages.

While Corona has seen new senior living facilities (HANAC) as of late, sections of the district specifically in Elmhurst are in need of affordable senior housing. Exorbitant rent, and overdevelopment throughout our community are leaving many seniors displaced with no place to turn. Waiting lists on housing take years to move, and seniors are left with little to no choice as they wait for a spot to be available. Funding is sorely needed to identify and obtain property to construct such a facility.

Youth/Education Although New York City as a whole will experience a downward trend in school enrollment in the next ten years, the school district encompassing CB#4Q (D24) will see an upward trend in enrollment. Schools cannot be built fast enough. We will continue to support the Department of Education and the School Construction Authority in their efforts to identify additional new sites for schools.

With the expansive growth of immigrant families with young children in our district, there is a great need for Early Childhood Services for children Birth to Three. The services that we are in need of are quality infant-toddler care and early childhood education provided by trained professionals with a culturally sensitive and linguistically sensitive focus. Currently, there are an insufficient number of Early Childhood centers in our district that service Infants and Toddlers and their parents and we are in desperate need of facilities to provide the space to render such services.

According to a recent Unicef report on early childhood development, an economically disadvantaged child has the opportunity to thrive socially and academically when provided with early intervention and early childhood services.

NYPD

Since 1988, the Community Board has put the renovation of the 110th Precinct at the very top of its yearly capital requests. For approximately 7 decades, this facility has seen little to no improvements to its overall infrastructure. Both within and outside the facility, structural crumbling, loose bricks, and flooding are common. As one of the busiest precincts in Queens North, with close to 250 uniformed and civilian personnel (and growing), this structure is a

3. Overview of Community District

potential danger that is unfair to those tasked with keeping our communities safe.

Additionally, the community has been requesting a proper parking facility for the 15+ marked and unmarked vehicles being stored along the residential block surrounding the precinct. In a district where parking is at a premium, we should be looking to provide parking for our officers all the while returning parking spaces to the residents of the surrounding community.

Illegal Car Sales Throughout the district of Community Board 4 we have seen a massive increase in the amount of illegally parked cars displaying “for sale” signs on them. While we continue to be at the forefront in bringing these vehicles to the attention of the agencies responsible, there simply isn’t enough manpower, and laws are far too lax. Vehicles are being blatantly parked along streets; some with plates, others without, and in many cases those who do have plates only display them in the rear of the vehicle enabling them to use the vehicle’s second plate on another one. The majority of these vehicles are being sold by local repair shops who have accepted the low summonses as the norm while they continue to sell the vehicles. The Dept. of Sanitation can ‘tag’ a vehicle with no plates, but due to the multiple day turnaround time, the vehicle is moved far before enforcement is able to impound it. The low cost of the summonses is simply not enough to deter the sales of these vehicles. Our constituency is in full support of legislation such as this that will help to stop these unfair practices from continuing to manifest themselves within our neighborhoods.

4. Top Three Pressing Issues Overall

The three most pressing issues facing Queens Community Board 4 are:

- *Affordable housing*
- *Neighborhood preservation (development trends)*
- *Youth and children's services*

The ongoing problem of overdevelopment continues within CB#4Q. It is not uncommon that older housing stock, (one and two family homes) are demolished and replaced with new buildings that house three and four family homes. The current levels of service and infrastructure can no longer absorb the additional housing units. In order to secure the future stability of CB4Q, careful consideration must be given to the zoning of our community.

This same issue has an overbearing effect on our schools. The over-usage of already limited City services will only continue to have a detrimental effect on our youth population. Overcrowded schools are common ground, after school programs are overcrowded, and the libraries within our vicinity are used far beyond capacity.

Narrow residential streets combined with lack of egress create a traffic burden that severely affects the quality of life of our already burdened constituency. The areas of Corona and Elmhurst have seen an increase in tourism that has very quickly left our communities in confusion and frustration specifically with regards to an overabundance of vehicles throughout our district. Within the last year, Elmhurst has undergone several changes such as the Queens Boulevard safety plan, and a recent uptick in highly popular businesses within the Queens Center Mall, while Corona remains adjacent to Flushing Meadows Corona Park, a park that sees increased programming throughout the year.



Main Issue Related to Health Care and Human Services

Access to healthy food and lifestyle programs

For several years now, CB4Q has proudly been home to two farmers markets, (Corona Plaza, and Elmhurst Hospital). Zumba classes, and other health related initiatives geared towards providing our community with the knowledge and resources they need to stay fit are happily supported throughout our constituency. Continued support for funding of these programs including the addition of more is essential to the well-being of our fast growing district.

Community District Needs Related to Health Care Facilities and Programming

Community Board4Q is home to Elmhurst Hospital Center, a trauma center within the heart of Queens that sees a tremendous amount of patients spanning the entire borough. While the hospital has been recipient of several upgrades and expansions over the last few years with more to come, the truth is that it is still the only trauma center within immediate reach of our communities. Urgent care facilities throughout the district are indeed a welcome addition as many constituents see these facilities as a cheaper, quicker alternative to the negative stigmas associated with an actual hospital. Although these facilities have gained popularity, the fact remains that the residents of the surrounding neighborhoods of Elmhurst, Corona, Maspeth, and Glendale are still in need of an actual hospital. Urgent care facilities are not made to replace hospitals, but to work in conjunction with them. We will continue to support public campaigns emphasizing the importance and the need for quality health insurance and preventive measures. It is important to note that depending on the neighborhood, the percentage of those able to speak English “less than very well” ranges anywhere from 37% to a staggering 79%, so emphasis must be put into providing this information in multiple languages.

Community District Needs Related to Facilities and Programming for Older New Yorkers

While Corona has seen new senior living facilities (HANAC) as of late, sections of the district specifically in Elmhurst are in need of affordable senior housing. Exorbitant rent, and overdevelopment throughout our community are leaving many seniors displaced with no place to turn. Waiting lists on housing take years to move, and seniors are left with little to no choice as they wait for a spot to be available. Funding is sorely needed to identify and obtain property to construct such a facility.



Capital Requests Related to Health Care and Human Services

Priority	Agency	Request	Explanation	Location
5/40	HHC	<i>Provide a new or expanded health care facility</i>	<i>With the former St. John's Hospital now closed, the residents of South Elmhurst and its surrounding vicinity are in need of a medical facility. Elmhurst Hospital is operating beyond capacity, and is struggling to keep up with the demand. The need for a medical center in the neighborhood of South Elmhurst cannot be overlooked.</i>	Community Wide
7/40	HHC	<i>Provide a new or expanded health care facility</i>	<i>Requesting a rehabilitation center within the confines of Community Board 4. Drug & alcohol counseling, mental health, and physical therapy services could be just some of the services offered.</i>	Community Wide
13/40	DFTA	<i>Create a new senior center or other facility for seniors</i>	<i>The need for an assisted living facility in the area of North Elmhurst is being requested. Requesting that resources be allocated to obtain property, and build such a facility to house the senior population of North Elmhurst.</i>	Community Wide
24/40	DFTA	<i>Create a new senior center or other facility for seniors</i>	<i>With the growing, aging population within CB4, the need for an assisted living facility cannot be overlooked. While Corona does in fact have such a facility, the area of Elmhurst does not. Requesting that resources be allocated to obtain property, and build such a facility to house the senior population of South Elmhurst.</i>	Community Wide

Expense Requests Related to Health Care and Human Services

Priority	Agency	Request	Explanation	Location
13/26	DOHMH	<i>Other animal and pest control requests</i>	<i>With mosquito-borne illnesses such as Zika, and West Nile within our communities, funding request would entail more staffing, and the continuation of public awareness campaigns to teach prevention in multiple languages. Our public plazas and abandoned properties are particularly vulnerable to rats. Requesting funding to increase awareness, and mitigation of pests (rats and mosquitoes) throughout the community.</i>	Community Wide
14/26	DOHMH	<i>Create or promote programs for education and awareness on nutrition, physical activity, etc.</i>	<i>The communities of Elmhurst and Corona both see farmers' markets, and several campaigns geared towards condoning walking, and riding vs driving. Our communities would like to continue to see expansions of programs (WIC at farmers' markets, bike helmet giveaways, health insurance, etc.) Material and outreach should be emphasized in multiple languages.</i>	Community Wide



Main Issue Related to Youth, Education and Child Welfare

School and educational facilities (Capacity)

Although New York City as a whole will experience a downward trend in school enrollment in the next ten years, the school district encompassing CB#4Q (D24) will see an upward trend in enrollment. Schools cannot be built fast enough. We will continue to support the Department of Education and the School Construction Authority in their efforts to identify additional new sites for schools.

Community District Needs Related to Educational Facilities and Programs

The multiple benefits of providing Early Childhood Services and Parent Services to an economically disadvantaged immigrant community cannot be overlooked. The utter lack of such services in our district for these children and families is cause for concern, as such programs would contribute to the well-being of parents and children alike. The lack of after school programs throughout the board continues to be an area of difficulty for many of our residents. The need for mentoring, homework help, counseling, and overall social networking is unfortunately missing from our community. In addition to the allocation of funds for after school programming, the need for a multi-purpose community/recreational center is a request that our board has held onto for some time. Such a center would provide the youth of CB4 with the social skills required for their growth. Communal activities such as sports, arts and crafts, and after school workshops are just a few of the different programs that could be offered at such a facility, especially in a day where social media, smart phones and video games reign above all else. Our youth lacks basic social skills than can only be obtained through communal activities and physical, social contact with each other. For this reason, our constituency is asking that acquisition of land and furthermore, the construction of an intergenerational (seniors and youth under one roof) and/or after school center within our district be considered.

Community District Needs Related to Services for Children and Child Welfare

With the expansive growth of immigrant families with young children in our district, there is a great need for Early Childhood Services for children Birth to Three. The services that we are in need of are quality infant-toddler care and early childhood education provided by trained professionals with a culturally sensitive and linguistically sensitive focus. Currently, there are an insufficient number of Early Childhood centers in our district that service Infants and Toddlers and their parents and we are in desperate need of facilities to provide the space to render such services. According to a recent Unicef report on early childhood development, an economically disadvantaged child has the opportunity to thrive socially and academically when provided with early intervention and early childhood services. In addition, the report states the following:

- Brain development is most rapid in the early years of life. When the quality of stimulation, support and nurturance is deficient, child development is seriously affected.
- The effects of early disadvantage on children can be reduced. Early interventions for disadvantaged children lead to improvements in children's survival, health, growth, and cognitive and social development.
- Children who receive assistance in their early years achieve more success at school. As adults they have higher employment and earnings, better health, and lower levels of welfare dependence and crime rates than those who don't have these early opportunities.
- Efforts to improve early child development are an investment, not a cost. Available cost-benefit ratios of early intervention indicate that for every dollar spent on improving early child development, returns can be on average 4 to 5 times the amount invested, and in some cases, much higher.



Community District Needs Related to Youth and Community Services and Programs

The allocation of funds for after school programming, and the need for a multi-purpose community/recreational center is a request that our board has held onto for some time. Such a center would provide the youth of CB4 with the social skills required for their growth. Communal activities such as sports, arts and crafts, and after school workshops are just a few of the different programs that could be offered at such a facility, especially in a day where social media, smart phones and video games reign above all else. Our youth lacks basic social skills than can only be obtained through communal activities and physical, social contact with each other. For this reason, CB4 is asking that acquisition of land and furthermore, the construction of an intergenerational and/or after school center within our district be considered. It is imperative that we give our youth, our future a place in their own community where mentorship and afterschool programs will be provided.

Capital Requests Related to Youth, Education and Child Welfare

Priority	Agency	Request	Explanation	Location
6/40	ACS	<i>Other child care requests</i>	<i>Currently, there are an insufficient number of Early Childhood centers in our district that service Infants and Toddlers and their parents. With the expansive growth of immigrant families with young children in our district, there is a great need for Early Childhood Services for children Birth to Three. The services that we are in need of are quality infant-toddler care and early childhood education provided by trained professionals with a culturally sensitive and linguistically sensitive focus.</i>	<i>Community Wide</i>
26/40	SCA	<i>Provide a new or expand an existing high school</i>	<i>The lack of high schools within the district is a cause for concern. With the recent influx of Elementary and Middle Schools throughout our district, adding a new high school would help our constituency to stay closer to home and will provide less overcrowding within the SD24.</i>	<i>Community Wide</i>
27/40	DYCD	<i>Other youth workforce development requests</i>	<i>Our district would benefit greatly from having a youth center that would ideally to support our youth and families. Educational programs, mentoring, homework help, extracurricular activities, and counseling are just some of the services that the youth within our district are in desperate need of. Seeking funding to obtain land, and construct a center within the confines of our district.</i>	<i>Community Wide</i>
33/40	SCA	<i>Provide technology upgrade</i>	<i>Many schools within our district strongly need tech upgrades such as whiteboards, laptops, calculators, tablets, etc. We are aware that the newer schools came with a lot of these tech upgrades already, so focus should be put towards the remaining pre-existing schools.</i>	<i>Community Wide</i>
CS	ACS	<i>Provide, expand, or enhance funding for Day Care Slots and Head Start Programs</i>	<i>In order to encourage higher education for the adults of CB4, a day care facility should be looked into. It would encourage parents to work on a steady schedule, and possibly further their education.</i>	<i>Community Wide</i>



Expense Requests Related to Youth, Education and Child Welfare

Priority	Agency	Request	Explanation	Location
16/26	DYCD	<i>Provide, expand, or enhance after school programs for elementary school students (grades K-5)</i>	<i>There is a tremendous need for after school programs for elementary school students grades k-5. At this early stage in the students' lives, it is important to have enriching programs that are both educational and fun. Said programs will also help parents who have limited work hours, will help the children with social skills, and give students an advantage as they progress in their education.</i>	<i>Community Wide</i>
25/26	DYCD	<i>Provide, expand, or enhance after school programs for middle school students (grades 6-8)</i>	<i>The low allocation of funds within CB4 is surprisingly low considering SD 24 is currently the most overcrowded in the city. Fund allocation within CB4 for such programming is a mere \$3.6 million, in contrast to CB6 (Rego Park) at \$4.4 million, CB1 (Astoria) at close to \$6 million, and CB12 (Jamaica) at close to \$10 million. Emphasizing the dire need for after school programming for adolescents grades 6-8 who at this stage in their lives need more aggressive mentoring and help with school work.</i>	<i>Community Wide</i>



Public Safety and Emergency Services

Main Issue Related to Public Safety and Emergency Services

Public safety facilities (precinct, fire houses, etc.)

Since 1988, the Community Board has put the renovation of the 110th Precinct at the very top of its yearly capital requests. For approximately 7 decades, this facility has seen little to no improvements to its overall infrastructure. Both within and outside the facility, structural crumbling, loose bricks, and flooding are common. As one of the busiest precincts in Queens North, with close to 250 uniformed and civilian personnel (and growing), this structure is a potential danger that is unfair to those tasked with keeping our communities safe. Additionally, the community has been requesting a proper parking facility for the 15+ marked and unmarked vehicles being stored along the residential block surrounding the precinct. In a district where parking is at a premium, we should be looking to provide parking for our officers all the while returning parking spaces to the residents of the surrounding community. Last year, in conjunction with Community Board 4, Congressman Crowley (CD14), State Senator Jose Peralta (SD13), and Assemblyman Francisco Moya (AD39) brought these concerns to light, and forwarded them to the attention of the Governor's and Mayor's offices. Additionally, it was requested that an NYPD satellite station be installed within the confines of Flushing Meadows Corona Park, a request that the Community Board has supported for many years. We look forward to the continued dialogue, and will be at the forefront with our Elected Officials in full support of the above stated requests.

Community District Needs Related to Policing and Crime

Roosevelt Avenue continues to be a point of contention, and much needed attention. The onslaught of street vendors, rampant crime, and quality of life issues along the commercial corridor are simply getting out of hand. The Community Board receives incessant calls with regards to the conditions of Roosevelt Avenue. We are seeking assistance from our lawmakers to help us find a solution to a growing problem with no clear end in sight. The potential implementation of a task force exclusive to this commercial corridor would be a welcome addition, and one that has been discussed over several conversations, but has made little headway thus far. We look forward to this continued dialogue. Throughout the district of Community Board 4 we have seen a massive increase in the amount of illegally parked cars displaying "for sale" signs on them. While we continue to be at the forefront in bringing these vehicles to the attention of the agencies responsible, there simply isn't enough manpower, and laws are far too lax. Vehicles are being blatantly parked along streets; some with plates, others without, and in many cases those who do have plates only display them in the rear of the vehicle enabling them to use the vehicle's second plate on another one. The majority of these vehicles are being sold by local repair shops who have accepted the low summonses as the norm while they continue to sell the vehicles. The Dept. of Sanitation can 'tag' a vehicle with no plates, but due to the multiple day turnaround time, the vehicle is moved far before enforcement is able to impound it. The low cost of the summonses is simply not enough to deter the sales of these vehicles. For these reasons, the Community Board is thankful, and in support of legislation from Assemblyman Francisco Moya against "curb stoning" (a practice in which a dealer poses as a private seller to avoid regulations and taxes). Our constituency is in full support of legislation such as this that will help to stop these unfair practices from continuing to manifest themselves within our neighborhoods.

Community District Needs Related to Emergency Services

With the increase of population and overdevelopment in CB4Q, all of our emergency services are being taxed. We are concerned that the current level of funding is not adequate for the maintenance/rehabilitation of our firehouses. In addition, we want to make sure that our emergency services providers have all of the equipment that they need in the case of an emergency (i.e. generators in the case of a blackout, better communication equipment to coordinate efforts, etc.). We are also concerned that the existing ERS system is being neglected. In a time when most households no longer have landlines, ERS boxes provide a crucial ability to summon emergency services in situations where very often every second matters. The Community Board is opposed to removal of the existing boxes, and asks that the cast iron bases be retained, and retrofitted to accommodate the more modern push button system onto the existing base.



Public Safety and Emergency Services

Capital Requests Related to Public Safety and Emergency Services

Priority	Agency	Request	Explanation	Location
2/40	NYPD	Renovate or upgrade existing precinct houses	The building now housing the 110 Precinct is inadequate. The precinct House is in a densely populated residential area with limited street access and no viable parking for police vehicles. This project was projected for site selection in FY 2013. We are looking to move funding and site selection forward. Renovation to this facility is desperately needed. CB #4Q will continue to support this project until complete.	110th Precinct 94-41 43rd Avenue
8/40	NYPD	Provide surveillance cameras	Several sectors within the district are in need of added security measures, specifically the corners spanning the entire stretch of Roosevelt Avenue, the adjoining Junction Boulevard, and a high-crime section of 57th Avenue between 99th Street and Junction Blvd. Requesting that surveillance cameras be considered.	Community Wide
12/40	FDNY	Rehabilitate or renovate existing fire houses or EMS stations	Continue funding for complete analyzation, and reparation of firehouses within the district. Engine 287 Ladder 136 Battalion 46 86-53 Grand Avenue Elmhurst, NY 11373	Community Wide
14/40	NYPD	Add NYPD parking facilities	For years, Community Board #4Q has requested dedicated vehicle parking for the 110 Precinct vehicles. Currently no off street parking is available for NYPD vehicles.	110th Precinct
38/40	NYPD	Provide a new NYPD facility, such as a new precinct house or sub-precinct	Requesting that an NYPD satellite station be installed within the confines of Flushing Meadows Corona Park to provide safety in this heavily used large park.	Flushing Meadows Corona Park

Expense Requests Related to Public Safety and Emergency Services

Priority	Agency	Request	Explanation	Location
6/26	FDNY	Upgrade communication equipment to improve emergency response	Requesting that existing ERS boxes throughout the district retain their cast iron bases, and be retrofitted with the more modern "push button" system vs. complete replacement. These boxes have a direct intercom link to both Fire and Police Dispatchers, and as such should be wired to existing electrical poles to keep them functioning.	Community Wide
9/26	NYPD	Provide additional patrol cars and other vehicles	Requesting 2 to 3 unmarked vehicles to meet current and future needs.	110th Precinct
11/26	FDNY	Expand funding for fire prevention and life safety initiatives	The FDNY Fire Safety Educational Unit needs additional funding to provide smoke detectors and carbon monoxide detectors for distribution to the public. This is a public service that will save lives.	Community Wide
22/26	FDNY	Other FDNY facilities and equipment requests	The majority of the firehouses within our district already have generators in case of a power outage. However, Engine 289 in Corona is still operating with an above ground, multiple unit setup. Requesting funding to provide an in ground generator for this heavily utilized station.	Engine 289 97-28 43rd Avenue



Main Issue Related to Core Infrastructure, City Services and Resiliency

Cleanliness/trash collection

Throughout the district, our constituency has seen an increase in the amount of garbage being strewn throughout our streets. Abandoned lots covered in garbage are common ground, and home owners and businesses alike tend to overlook laws regarding the cleanliness of their sidewalks. New recycling programs such as electronic/textile/compost are confusing, and present a change that many of our constituents have not yet grasped. Informational campaigns in multiple languages for public education on recycling, and responsibilities of property owners are a constant request heard throughout our constituency. It has also been noted that DSNY enforcement tends to be lax in some cases, and overly aggressive in others due mostly to the fact that several agents themselves have openly stated that they themselves do not know the actual laws. Dialogue between DEP, and DSNY Enforcement must be made crystal clear to form a more cohesive plan to keep our streets clean.

Community District Needs Related to Water, Sewers and Environmental Protection

Several corridors along CB4Q are in need of upgrades to their sewers. Basements along the commercial district of 82nd Street between Roosevelt Avenue and Baxter Avenue as well as homes along the South side of 111th Street suffer from sewer backups, and ponding issues along their streets. A general upgrade of our infrastructure should take precedence to meet current and future demand. More over, we have been undergoing an issue with the recently implemented rain garden initiative brought forth by the Dept. of Environmental Protection. When the rain garden program was unveiled in the district in 2013, it was received with trepidation as concerns were immediately brought up with regards to the accountability of rain garden maintenance. While the Community Board was in favor of the overall concept behind them, we feared that due to the lack of garbage bins throughout the district, these rain gardens would quickly become garbage pits. We soon came to learn that an apparent miscommunication between the Dept. of Environmental Protection (DEP) and the Dept. of Sanitation Enforcement (DSNY) created a situation in which homeowners are being improperly summonsed time and time again for rain gardens in front of their properties despite earlier promises of this initiative being maintained by the City. As of FY19 Consultations, dialogue with DSNY still dictates that the agency would continue to issue summonses as rain garden are essentially considered tree pits. Since then, DEP has promised to continue dialogue with DSNY and communities for clarification. We will continue to support the agency in effectively disseminating this information going forward. Before more installations are set in place, we must emphasize that our communities are being unfairly ticketed for an infrastructural initiative geared towards making lives easier. The responsible agencies must plan more effectively, and essentially be held accountable for their programs before they are dropped on our communities, and not after the fact.



Community District Needs Related to Sanitation Services

NYC has suffered from several snow storms over the last few years, and while DSNY did its best to work with existing resources, ultimately a lack of manpower, and vehicle egress made snow removal a difficulty. Damaged snow plows, and detached mechanical brooms have been reported by our constituency. We ask that budget increases reflect the increase in housing units in the CB#4Q area. Additional vehicles as well as increased maintenance on the existing ones should be more aggressively pursued. We are also seeking a more proactive campaign be implemented to educate our residents on the laws and rules for recycling. Too many residents in CB#4Q do not understand the constantly changing rules and regulations of recycling and property maintenance, specifically with regards to electronic recycling, textile recycling, composting and bioswales. When the bioswale program was unveiled in the district in 2013, it was received with trepidation as concerns were immediately brought up with regards to the accountability of bioswale maintenance. While the Community Board was in favor of the overall concept behind them, we feared that due to the lack of garbage bins throughout the district, these bioswales would quickly become garbage pits. We soon came to learn that an apparent miscommunication between the Dept. of Environmental Protection (DEP) and the Dept. of Sanitation Enforcement (DSNY) created a situation in which homeowners are being improperly summonsed time and time again for bioswales in front of their properties despite earlier promises of this initiative being maintained by the City. Before more installations are set in place, we must emphasize that our communities are being unfairly ticketed for an initiative geared towards making lives easier. The responsible agencies must plan more effectively, and essentially be held accountable for their programs before they are dropped on our communities, and not after the fact.

5. Summary of Community District Needs and Budget Requests



Core Infrastructure, City Services and Resiliency

Capital Requests Related to Core Infrastructure, City Services and Resiliency

Priority	Agency	Request	Explanation	Location
3/40	DEP	<i>Build new, expand or repair storm sewers</i>	<i>Reconstruction and Upgrade of Existing Sewer System to Accommodate Existing and Future Needs. Queens Boulevard--from the Long Island Expressway to the CSX railroad line.</i>	<i>Community Wide</i>
11/40	DEP	<i>Build new, expand or repair storm sewers</i>	<i>Reconstruction and Upgrade of Existing Sewer System. 111th Street from Corona Avenue to Roosevelt Avenue.</i>	<i>Community Wide</i>
CS	DEP	<i>Provide new or expand green infrastructure, e.g. greenbelts, bio swales</i>	<i>85th Street abuts MTA /LIRR property. Green infrastructure is sorely needed in this area. DEP has already conducted studies to consider this location for green infrastructure, and has in fact identified it as a potential site. Seeking implementation and completion of this long awaited / approved project.</i>	<i>85 Street 55th Road 57th Road</i>
CS	DEP	<i>Build new, expand or repair storm sewers</i>	<i>Reconstruction and Upgrade of Sewer System. Junction Boulevard from the Long Island Expressway to Roosevelt Avenue. 57th Avenue from Queens Boulevard to 99th Street. Horace Harding Expressway from 108th Street to Queens Boulevard.</i>	<i>Community Wide</i>
CS	DEP	<i>Other water supply system maintenance requests</i>	<i>Purchase additional equipment for the Bureau of Water Supply and Wastewater collection. Additional equipment for jet flushers, catch basins, and dried bacteria culture trucks.</i>	<i>Community Wide</i>
CS	DSNY	<i>Maintain replacement cycle for trucks and equipment</i>	<i>In the wake of the Blizzard of 2014 several snow plows and utility vehicles underwent extensive damage. In order to meet current and future needs, funding is being requested to maintain the replacement cycle, for DSNY trucks and equipment.</i>	<i>Community Wide</i>
CS	DEP	<i>Build new, expand or repair storm sewers</i>	<i>The triangle area located at Broadway, 76th Street, and 41st Avenue constantly floods at the crosswalk curb cuts. Standing water is always present. Install catch basins in this area to reduce flooding.</i>	<i>Broadway 76th Street 41st Avenue</i>



Expense Requests Related to Core Infrastructure, City Services and Resiliency

Priority	Agency	Request	Explanation	Location
8/26	DSNY	Increase enforcement of illegal posting laws	Several commercial corridors and their surrounding areas are infamous for illegal postings on utility poles, walls, and construction fences. The entire stretch of Roosevelt Avenue from 72nd Street to 114th Street and its adjacent side streets are havens for these postings. Business owners do their best to remove these flyers, but with zero enforcement, it is a losing and discouraging battle. Funding is being requested to bring enforcement to our district.	Roosevelt Ave 72nd St 114th St
17/26	DEP	Provide new or expand green infrastructure, e.g. greenbelts, bio swales	Requesting more staffing for the maintenance of the recently implemented Green Infrastructure initiative. Currently DEP staff is scheduled to maintain and clean these sites on a weekly basis, but a majority of our sites go for weeks, possibly months with no visits. Additionally, CB4Q has reported several cases in which homeowners receive summonses for garbage in these bioswales. Current staffing is simply not enough. Requesting funding to meet current and future demand.	Community Wide
19/26	DSNY	Increase enforcement of dirty sidewalk/dirty area/failure to clean area laws	Several areas of our district are seeing a substantial amount of garbage pile up, with little to no penalty to the property owners. Commercial corridors such as Queens Boulevard, Roosevelt Avenue, Junction Boulevard, Broadway, and National Street near Corona Plaza are infamously known for excessive littering, but enforcement is scarce. Inspectors have often been witnessed turning a blind eye to several establishments. The quality of life of our small businesses along these specific corridors are in need of a more cohesive campaign to clean up our streets.	Community Wide
20/26	DSNY	Provide more frequent organics/recycling collection service for schools and institutions	We are looking for funding to help and support organics pickups in schools. Currently, the organics collection can be seen primarily within QW05, but many of our schools don't participate in the program	Community Wide
23/26	DSNY	Other garbage collection and recycling requests	The tenants of a local residential building took it upon themselves to come up with funding to purchase and install dog waste stations in the area surrounding their building. Since then, there has been a noted decrease in the amount of dog droppings along the street. Because of the moratorium on Curb Your Dog Signs, this request would be a much welcomed initiative to be brought up to Elected Officials. These small structures could be stationed near parks, and in high pedestrian traffic areas.	Community Wide



Main Issue Related to Land Use, Housing and Economic Development

Affordable housing programs

It is a fact that the infrastructure of CB #4Q was built mainly for low-density housing. The addition of larger housing units at double and in some cases triple the size of the preexisting structure places an undue strain on our infrastructure. Such over-development without proper planning affects CB4Q and its residents on all facets. The Dept. of Sanitation is overwhelmed with the increase in trash generated by the larger units; Police and Fire department response times are up due to the increase in traffic clogging our roads, already overused schools and hospitals are stretched beyond capacity, and reports of flooding and sewer backups are at an all-time high.

Community District Needs Related to Land Use

Community Board #4Q is requesting that The Department of City Planning evaluate the current zoning in CB#4Q. We are requesting that residential areas in need of down zoning and areas where affordable housing can be built be identified. New zoning regulations must include additional off-street parking provisions for each unit built. On the note of overcrowding and over-development is the commercial corridor along Queens Boulevard. Existing commercial one story buildings are being replaced with high density buildings at a rate too fast to be kept up with. A planned balance between residential and commercial buildings along the boulevard is necessary so Queens Boulevard does not continue to be a boulevard of haphazardly placed buildings. For far too long, we have operated under the careless mentality of “when it is needed, we’ll deal with it.” The intricacies behind infrastructural projects combined with lack of funding and staffing has led our agencies to operate with little to no time to actually handle issues on a proactive basis. Community services and utility companies are increasing their services as the need arises, and not before. The fact is that large sections of Elmhurst and Corona were designed as a tightly woven network of 1-2 family houses whose streets are far too narrow, and simply not prepared to handle such an influx of tourism in such a short amount of time. With 75% of the district’s make up being residential, it is evident that people want to live here. What is a constant problem for us however, is the misconception that in order to solve the problem, more housing should be created. Throughout the year, variances are constantly being brought to Community Boards for review thus converting 2 and 3 family homes into multi dwellings of 15 or more families. The growth is blatantly evident, yet very little emphasis is being put on into actual upgrades to our streets or sewer systems. With the average median household income at \$45,661, and 27% of the district’s households living below the poverty line, there should be more conversation and initiatives geared towards not only providing affordable housing, but in also taking into consideration that housing initiatives require substantial infrastructural changes especially in neighborhoods such as Corona and Elmhurst that have seen a tremendous surge in population within the last 5-10 years.

Community District Needs Related to Housing Needs and Programming

The lack of NYCHA housing within our district is a cause for concern. With the average median household income at \$45,661, and 27% of the district’s households living below the poverty line, there should be more conversation and initiatives geared towards providing affordable housing. Careful consideration must be made into the location(s) of such developments as substantial infrastructural upgrades are often needed. The up and coming neighborhoods of Corona and Elmhurst already suffer from lack of parking, and substantial increases in traffic. While we have a tremendous need for such facilities, the inherent inconvenience of putting them wherever possible can be more detrimental than helpful. We support open dialogue in the obtaining of land, and eventual construction of such a facility within our district.



Community District Needs Related to Economic Development

The eclectic nature of Elmhurst and Corona combined with the astronomical prices on rent for ‘brick and mortar’ establishments has led Community Board 4 to be a mecca for street vendors. The sheer amount of nationalities, cultures and craftsmen within the district have encouraged those seeking employment to establish themselves as successful street vendors. The concern however, is over the high amount of vendors that flood areas where commercial traffic is extremely high, and the negative impact this can have on brick and mortar businesses. Laws are in effect that help to govern the distance between street vendors and physical establishments selling similar wares, but complaints to agencies, and fights between vendors are far too numerous to log. While it is universally understood that street vendors are in fact a legitimate tax paying business, there should be an understanding that inspections of vendors (food or otherwise) be far more stringent. Furthermore, enforcement should be conducted more often in heavily utilized commercial corridors that have been overrun by street vendors such as Corona Plaza, Roosevelt Avenue, Junction Boulevard, the Queens Center Mall, and the area within the purview of the 82nd Street Business Improvement District (82nd Street Partnership) which spans 82nd Street from 37th Avenue to Baxter Avenue.

Capital Requests Related to Land Use, Housing and Economic Development

Priority	Agency	Request	Explanation	Location
15/40	HPD	<i>Provide more housing for extremely low and low income households</i>	<i>Community Board 4 has seen a very steady influx of new residents in the last few years, and will only continue to grow at a steady pace. The lack of affordable housing is encouraging "shacking up" in which large families are living out of single rooms and illegally converted basements. An Affordable Housing facility is desperately needed for both the convenience, and the safety of CB4's residents.</i>	<i>Community Wide</i>
28/40	HPD	<i>Provide more housing for medium income households</i>	<i>Community Board 4 has seen a very steady influx of new residents in the last few years, and will only continue to grow at a steady pace. An emphasis throughout the district is being put into low income housing, however, financial burden does not pertain strictly to low income households. Requesting funding to survey, obtain land, and eventually build an affordable housing facility for medium range income within the district.</i>	<i>Community Wide</i>
32/40	HPD	<i>Other affordable housing programs requests</i>	<i>While the Department of Housing Preservation and Development (HPD) provide loan programs the increased need for such programs can not be overlooked. Community Based Organizations (CBO's) such as Neighborhood Housing Services (NHS), do a great job in providing such services, but the demand for increased programs is exceedingly present specifically in low density (2-3 family) homes.</i>	<i>Community Wide</i>
36/40	HPD	<i>Provide more housing for special needs households, such as seniors, or the formerly homeless</i>	<i>With the homeless crisis sweeping throughout the city, many communities have been seeing an increase in the number of shelters popping up within their constituencies. As these shelters continue to increase, to avoid the homeless crisis remaining stagnant it is important housing for formerly homeless as well as seniors be provided.</i>	<i>Community Wide</i>

5. Summary of Community District Needs and Budget Requests

Land Use, Housing and Economic Development



Expense Requests Related to Land Use, Housing and Economic Development

Priority	Agency	Request	Explanation	Location
2/26	DCP	<i>Study land use and zoning to better match current use or future neighborhood needs</i>	<i>CB4Q is experiencing overdevelopment at an alarming rate. Existing one and two family homes are demolished and replaced with high density buildings that are out of character with the surrounding neighborhood. The existing infrastructure was built mainly for low density housing and the additional units place an undue strain on our fragile infrastructure. Requesting that DCP evaluate the current zoning in CB4Q taking into account the current state of our infrastructure, and identify areas where zoning changes would improve the quality of life for our constituency.</i>	<i>Community Wide</i>
3/26	EDC	<i>Expand graffiti removal services on private sites</i>	<i>The ongoing problem of graffiti plaguing our district continues to grow. While several initiatives (Forever Graffiti Free, NYPD, DSNY) have been effective, more funding to provide more materials to agencies, local civic organizations and community groups would be a huge benefit to our district.</i>	<i>Community Wide</i>
12/26	HPD	<i>Expand tenant protection programs</i>	<i>Tenant protection services are designed to preserve affordable housing by detecting and curtailing patterns and practices of landlord fraud. With the dramatic growth seen within CB4 our constituency is in need of extensive services that would help them to preserve their quality of life. Funding is being requested for expansion of these programs.</i>	<i>Community Wide</i>
15/26	SBS	<i>Support BID formation planning</i>	<i>CBQ currently has a small BID stretching from Roosevelt Avenue to Baxter Avenue, however other sectors throughout the district would benefit from this initiative. The community of Elmhurst, an up-coming commercial mecca would greatly benefit from a potential BID, specifically along the corridor of Broadway from Queens Boulevard to Baxter Avenue.</i>	<i>Community Wide</i>
24/26	SBS	<i>Support BID formation planning</i>	<i>Community Board 4's only BID is grossly understaffed taking into account its catchment area, and its growth potential. Requesting that funds be allocated to increase the staffing for this BID in the heart of Jackson Heights and Elmhurst.</i>	<i>82nd Street Partnership 37-06 82nd Street</i>



Transportation

Main Issue Related to Transportation

Sidewalk and curb construction

The maintenance of our roads has become an ongoing issue that is exacerbated by the influx of vehicles seen throughout our streets as of late. Snow mitigation practices after snowstorms tear our already crumbling streets and curbs apart. An increase in staffing for surveying, and eventual repairing of long, heavily used stretches of road would be an asset to our communities. Narrow roads along residential streets combined with decaying infrastructure is a recipe for disaster, specifically along high usage corridors that serve as the only means into our communities. We are specifically concerned with the excessively used Vision Zero high priority stretch of road along Junction Boulevard from Roosevelt Avenue to the Horace Harding Expressway. This avenue is in dire need of infrastructural economic, and roadway upgrades. We will continue to support the NYCDOT in helping to identify high priority corridors such as this on a proactive basis, and not after the fact.

Community District Needs Related to Traffic and Transportation Infrastructure

Over the last 3-4 years NYCDOT has worked closely with Queens Community Board 4Q in understanding its needs with regards to traffic safety. Due to the recent uptick of public events within the district, specifically around Flushing Meadows Corona Park, the department has put substantial resources into traffic mitigation and constituent safety. Implementation of the long awaited Queens Boulevard Traffic Safety plan has begun, and Broadway from Queens Boulevard into Jackson Heights will soon see traffic and safety improvements along the corridor. In conjunction with these improvements and Vision Zero, fatalities and injuries for pedestrians, cyclists, and motorists alike will likely continue to dwindle. Community Board 4 however has expressed concern over the potential proliferation of bike lanes throughout the district, specifically in corridors where vehicles and cyclists have never shared roads. While it is universally understood that our streets should be safe for all, the specifics on how bike lanes are supposed to be properly used is still unclear to many of our constituents. Cyclists and motorists alike actively ignore rules of the road, i.e.: helmets are rarely worn, cell phones are actively used, and motorized vehicles (i.e. motorcycles, scooters) feel that they can freely use bike lanes as a means of travel. While NYC's Vision Zero campaign has proactively initiated substantial educational community outreach, lawmakers should now work on a campaign geared towards holding cyclists accountable for the laws governing bicycles within the district through education. While good for revenue on a small scale, an increase in cyclist summonses since Vision Zero's inception simply just states that cyclists themselves may not even know the laws, or worse, feel like they are above them. The solution is not simply about more summonses, but about more education for cyclists and motorists alike. The Vision Zero initiative at its most basic level should be more aggressively phased into our Elementary, Junior and High School curriculum.

Community District Needs Related to Transit Services

Within Community Board 4, we have access to the 7 line, and several high-volume stations for both buses and trains. However high demand is quickly overcrowding our transportation infrastructure. The Queens Center Mall specifically is seeing an enormous amount of growth which local stations and bus routes simply cannot sustain. Funding should be allocated for an increase in service, station surveys, and potential re-routes to buses specifically along the commercial corridors surrounding the Queens Center and Queens Place Malls.



Transportation

Capital Requests Related to Transportation

Priority	Agency	Request	Explanation	Location
4/40	DOT	Repair or construct new curbs or pedestrian ramps	Capital funding is being requested to continue with the substantial amount of damaged curbs throughout the district. Requesting an increase in funding to the NYCDOT curb replacement program/unit.	Community Wide
18/40	DOT	Reconstruct streets	Reconstruction of streets in the surrounding area of 41st Avenue and Roosevelt Avenue	41st Avenue Roosevelt Avenue
19/40	NYCTA	Improve accessibility of transit infrastructure, by providing elevators, escalators, etc.	Comprehensive study should be conducted towards upgrades of these very heavily utilized stations (elevators, handicap accessibility, etc.)	Community Wide
22/40	DOT	Repair or construct new curbs or pedestrian ramps	Some center island malls on 111th Street were completely renovated, but the remaining malls are in need of a complete overhaul. The curbs should be raised as part of the reconstruction so that illegal parking can be discouraged, and trees and shrubbery should be planted to better the quality of life for residents facing the malls.	111th St Sautell Ave 43rd Ave
23/40	DOT	Roadway maintenance (i.e. pothole repair, resurfacing, trench restoration, etc.)	This stretch of road adjacent to a major highway (Grand Central Parkway) is in dire need of a reconstruction. Curb replacement/creation should be a priority. Coordination and conversation with State DOT should be looked into.	114th St 43rd Av Roosevelt Av
29/40	DOT	Reconstruct streets	A complete reconstruction of this very heavily utilized corridor from Roosevelt Avenue to the Horace Harding Expressway should be looked into. Curb cuts, traffic mitigation plans, street resurfacing, and curb replacements are all sorely needed to meet current and future demand.	Junciont Blvd Roosevelt Av Horace Harding Expwy
31/40	DOT	Install streetscape improvements	Requesting streetscape improvements to aid in the beautification of commercial corridors throughout the district specifically Junction Blvd. bet Roosevelt Ave. & 43rd Ave. and 82nd Street bet. Roosevelt Ave. & Baxter Ave. While the 82nd Street BID does in fact maintain the latter section, improvements to lighting, flood mitigation, benches, planters etc. would be a welcome addition to both sections of road in the hopes that local businesses would benefit from the beautification.	Community Wide
34/40	DOT	Expand the frequency or hours of operation of ferries	Infrastructural improvements to commercial corridors throughout the district could help to stimulate local economy. Specific attention should be given to a stretch of road bet. Roosevelt Ave. and Baxter Ave.; a section of CB4Q's only Business Improvement District (BID) in need of flood mitigation. Similarly, Junction Blvd from Roosevelt Ave to 43rd Ave needs similar improvements. Businesses along these segments suffer endlessly from waterlogged basements, and sink holes along their streets. Requesting funding for assistance in identifying the issues present at these very important corridors.	Community Wide



Transportation

Capital Requests Related to Transportation

Priority	Agency	Request	Explanation	Location
CS	DOT	Roadway maintenance (i.e. pothole repair, resurfacing, trench restoration, etc.)	The streets within this area (Grand Avenue 57th Avenue, Queens Boulevard) are in great disrepair and many have no viable curbs or no curbs at all.	57th Ave Grand Avenue, LIRR Queens Blvd
CS	DOT	Upgrade or create new plazas	Renovation of Corona Plaza Funding has been allocated by CM Ferreras of CD21. *Continued Support	Corona Plaza
CS	NYCTA	Repair or upgrade subway stations or other transit infrastructure	Reopen a Train Station on Broadway in Queens for the MTA LIRR Due to heavy public transportation demands CB #4Q is requesting the reopening of a train station on the MTA LIRR Port Washington Line on Broadway in Queens.	Former Broadway LIRR Station Broadway and Whitney Avenue

Expense Requests Related to Transportation

Priority	Agency	Request	Explanation	Location
5/26	DOT	Other transportation infrastructure requests	Increase and maintain funding for the curb and sidewalk replacement program.	Community Wide
7/26	DOT	Other transportation infrastructure requests	The rapid increase in population within CB4Q has left several requests for repairs pending for far longer than they should be. Requesting an increase in staff for roadway maintenance (pothole and reconstruction crews). Additionally requesting an increase in staffing for replacement of missing/damaged signs (traffic device maintainers)	Community Wide
21/26	DOT	Other transportation infrastructure requests	Requesting surveying and studies to consider infrastructural improvements (additional lighting, signage and street maintenance/curb replacement/repair) to this dark stretch of road in the backstreets of Elmhurst which was recently approved by DEP for Green Infrastructural upgrades.	85th St 55th Ave 57th Ave



Parks, Cultural and other Community Facilities

Main Issue Related to Parks, Cultural and other Community Facilities

Forestry services, including street tree maintenance

An issue of contention within the district is the borough wide lack of Park Enforcement Police (PEP). While Flushing Meadows Corona Park (FMCP) does not fall within the jurisdiction of any community board in specific, Community Board 4 sees the brunt of the park's popularity more than any other district. Countless events throughout the year continue to thrive within the park, and while the potential support to local business is appreciated, such large scale events can be detrimental to the quaint neighborhoods surrounding FMCP. Funding to increase enforcement across the borough would help with crowd mitigation, overall safety and more late night patrols. Additionally, Community Board has been in full support of an NYPD satellite station within the park; at the very least, we would be in favor of security cameras throughout some of the more prominent trouble parks within the district.

Community District Needs Related to Parks and Recreational Facilities and Programming

One of the more pressing issues that CB4Q faces on a day to day basis is the loss and/or lack of valuable green space. While we encourage and welcome the attention and tourism, we cannot forget that local residents, both elderly and young should be entitled to an escape in the form of green space. While we do have a number of parks within our district, many of them need to be re-sodded/ replaced with synthetic turf, have play equipment in dire need of repair/upgrade, or need to be redesigned to accurately reflect their usage and the needs of the community. As the number of Americans suffering from obesity steadily rises, it is important that the residents of CB4Q have safe, modern and fun places to go to get exercise and stay healthy.

Community District Needs Related to Cultural and other Community Facilities and Programming

Community Board 4 in conjunction with several organizations pushed to have the Old St. James Church landmarked due to its strong long history within our community. Eventually it was approved; funding is now needed to refurbish sections of the existing structure. (See attached)

Supporting Materials:

The Community Board has provided the following supporting materials which can be accessed by clicking on the link(s) below or by copying and pasting the link(s) found in the Appendix into a browser.

[LPC-Old St. James Ep. Church](#)

Community District Needs Related to Library Facilities and Programming

With the amount of new schools and pre kindergartens within our district, we feel that the need for a library within the confines of South Corona would be a very welcome addition to the local community. While the Corona and Lefrak branches have seen recent upgrades, the community at large would like a branch within the vicinity of PS14, the HS of Arts and Business, and several newly proposed pre k facilities all within the South Corona area.

Community District Needs Related to Community Boards

Community Boards are widely considered to be the City's front line of defense, facing countless constituent issues, zoning variances, and public meetings. Staffing for many CB's is however often inadequate for the amount of work output by these agencies, causing many of them to resort to interns as a primary source of help. Budget constraints have led many boards to maintain a maximum of 2-3 staff members, usually with only one full timer. An increase in funding is sorely needed to increase current staffing.



Parks, Cultural and other Community Facilities

Capital Requests Related to Parks, Cultural and other Community Facilities

Priority	Agency	Request	Explanation	Location
1/40	QL	Create a new, or renovate or upgrade an existing public library	The population of Community Board 4Q is growing daily. Although the Elmhurst Library branch is under renovation for an expansion, both this branch and the Lefrak City Library will continue to be heavily utilized. A new reference library in the vicinity of 108th Street and Corona Avenue will help service the south east portion of CB4Q which is currently lacking library services.	Corona Avenue 108th Street
10/40	DPR	Reconstruct or upgrade a park or amenity (i.e. playground, outdoor athletic field)	At just over 3 acres, and located at the northernmost border of Community Board 4, Park of the Americas is in need of refurbishing. The very pressing issue of intoxicated visitors within the park has gotten out of hand. Measures should be taken to discourage such activity. Security measures (benches, led lighting, security cameras, etc.) are all very welcome additions to this park that is located directly across from an elementary school. While we understand that funding has already been allocated to a portion of the park, we are requesting funding to complete second portion of renovations.	Park of the Americas
16/40	DPR	Reconstruct or upgrade a park or amenity (i.e. playground, outdoor athletic field)	William F. Moore Park is a heavily utilized small park in the heart of Corona. The park adjacent to the famous Parkside Restaurant and the Lemon Ice King of Corona is in need of renovation. Improvements to the existing flag pole, additional shrubbery/plantings, and overall infrastructural improvements would be a welcome addition to the surrounding community. Upgrades to the bocce ball court would be a welcome addition as well as proper drainage for the residual clay from the court that can be seen all throughout the park and its surrounding sidewalk(s).	William F. Moore Park 107-06 Corona Avenue
17/40	DPR	Reconstruct or upgrade a park or amenity (i.e. playground, outdoor athletic field)	Requesting funding be allocated for the renovation of Triangle 90 (90th Street and Roosevelt Avenue) and Answer Triangle (94th Street and Roosevelt Avenue). These two small parks within very close proximity to each other could essentially be funded as a package deal. The commercial corridor of Roosevelt is in need of several infrastructural upgrades, so a superficial renovation to these two key parks along the corridor would be a welcome addition and an asset to local businesses and residents.	Triangle 90 90th St and Roosevelt Ave
20/40	DPR	Reconstruct or upgrade a park or amenity (i.e. playground, outdoor athletic field)	The reflecting pools near the Unisphere in Flushing Meadows Corona Park (FMCP) have been improperly/barely used over the last few years. We are elated to know that recent funding has allowed for a partial renovation of these pools, However, additional funding is being requested to help with phase 2 of the adaptive renovation for Fountain of the Fairs and reflecting pools at FMCP.	Flushing Meadows Corona Park



Parks, Cultural and other Community Facilities

Capital Requests Related to Parks, Cultural and other Community Facilities

Priority	Agency	Request	Explanation	Location
21/40	DPR	Reconstruct or upgrade a building in a park	With the substantial influx of events within this small park, renovations would be a welcome and much needed addition. The beautification of the front entrance, repainting of overhead steel beams, and implementation of security cameras throughout the grounds are all necessary upgrades to meet current and future use.	Playground for All Children
25/40	DPR	Reconstruct or upgrade a park or amenity (i.e. playground, outdoor athletic field)	American Triangle (Park ID#Q173) is in need of refurbishing. Virtually no green space exists in this very heavily utilized triangle. Concrete and benches are dilapidated due to heavy usage. Issues pertaining to intoxicated visitors to the park are very common during all hours of the day, so we ask that security measures in the form of better lighting, fencing, and benches geared towards discouraging sleeping be taken into consideration. Additional foliage/shrubbery would be a very welcome addition. Additionally Veterans Square (Q055) needs to be refurbished. These two small parks within very close proximity to each other could essentially be funded as a package deal.	American Triangle
30/40	DPR	New equipment for maintenance	Requesting funding for parks maintenance vehicles: 4x4 crew cab, salt spreader, and powerlift gate (Ford-F 250) 4x4 single cab pick up with plow, powerlift gate, and "dumperdog" attachment	Community Wide
35/40	OMB	Provide more community board staff	Community Boards are generally understaffed. An increase in funding is sorely needed to maintain current staffing as well as new hiring.	Community Board 4Q 46-11 104 Street
37/40	DPR	Reconstruct or upgrade a building in a park	Over the past few years, new synthetic soccer fields were constructed within Flushing Meadows Corona Park, but not all were completed. Funding is being requested to complete the construction of the remaining synthetic soccer fields.	Flushing Meadows Corona Park
CS	DPR	Reconstruct or upgrade a park or amenity (i.e. playground, outdoor athletic field)	CC Moore Playground is a heavily utilized playground. The design is obsolete. Redesign requested to meet the needs of the current park users.	CC Moore Playground
CS	DPR	Reconstruct or upgrade a park or amenity (i.e. playground, outdoor athletic field)	This location is in need of a redesign that is more compatible with the surrounding area. Funding was recently allocated by CM Dromm (CD25). We are requesting continued support for the duration of this project.	Veteran's Grove
CS	DPR	Reconstruct or upgrade a park or amenity (i.e. playground, outdoor athletic field)	Continuing support on the redesign of this park.	Louis Simeone Park



Parks, Cultural and other Community Facilities

Capital Requests Related to Parks, Cultural and other Community Facilities

Priority	Agency	Request	Explanation	Location
CS	QL	<i>Create a new, or renovate or upgrade an existing public library</i>	<i>Renovation of Elmhurst Library. **Continued Support</i>	<i>Elmhurst Library</i>
CS	DPR	<i>Reconstruct or upgrade a park or amenity (i.e. playground, outdoor athletic field)</i>	<i>Residents of the Elmhurst community have been jogging along the outdoor perimeter of Newtown Field (92nd Street and 57 Avenue) for years as no official track exists within the area. However, a mere 2 blocks away, and sitting directly on the border of CB4, is Hoffman Park, a heavily utilized 3 acre park in need of renovation. In our opinion, this is a prime location for a proper jogging track. Ideally, funding can also be used to alleviate the prominent floor cracks that can be seen throughout the basketball, handball, and baseball fields. We will continue to support the renovation of this park, based on BP allocation of funds.</i>	<i>Hoffman Park</i>
CS	DPR	<i>Reconstruct or upgrade a park or amenity (i.e. playground, outdoor athletic field)</i>	<i>We must decide whether this should be a passive or active park. On any given morning, tai-chi practitioners can be seen using this park religiously between the hours of 7 and 10am. Upon release of the many schools within walking distance however, the dynamics of this park change. At the very least, we would like to see adult exercise equipment and shrubbery to replace the much worn terrain of this playground.</i>	<i>Newtown Playground</i>



Parks, Cultural and other Community Facilities

Expense Requests Related to Parks, Cultural and other Community Facilities

Priority	Agency	Request	Explanation	Location
1/26	DPR	<i>Forestry services, including street tree maintenance</i>	<i>There is a backlog of requests for tree pruning. The current pruning cycle is far too long. Funding is needed to shorten this cycle, and to restore pruner and climber positions to the DPR. A shorter year pruning cycle will produce stronger, healthier, and better looking trees. A strong maintenance program is needed to care for existing trees and for the continuation of the million additional trees that are to be planted in NYC.</i>	<i>Community Wide</i>
4/26	DPR	<i>Forestry services, including street tree maintenance</i>	<i>Trees are a vital component of our environment. Homeowners affected by tree roots lifting sidewalks should not have to wait years before repairs are completed. Although funding has increased in the past, an additional increase in FY 2017 is requested to help complete the existing backlog of requests.</i>	<i>Community Wide</i>
10/26	DPR	<i>Provide better park maintenance</i>	<i>The large amount of parks within the district combined with the lack of proper personnel to maintain them continues to be a problem throughout the district. Requesting additional parks maintenance personnel, Parks Enforcement Police (PEP), foresters to meet current and future needs.</i>	<i>Community Wide</i>
18/26	QL	<i>Extend library hours or expand and enhance library programs</i>	<i>Community Board #4Q's catchment area of Corona, Corona Heights, and Elmhurst is densely populated with a wide variety of ethnic groups comprised of children, adults, and senior citizens. Our library branches and programs the libraries provide are heavily utilized. We will continue to support six day service, look to support 7 day service when applicable.</i>	<i>Community Wide</i>

6. Additional Information and Other Budget Requests

Other Capital Requests

Priority	Agency	Request	Explanation	Location
9/40	DPR	<i>Fund an Existing Community Garden</i>	<i>Requesting improvements to this heavily supported community garden. Gardening equipment, fencing, better lighting, and improved paths are just a few of the improvements being requested by the community.</i>	<i>Corona Tax Payers' Garden Radcliff Ave 102nd Street</i>
39/40	DPR	<i>Improvements to an Existing Community Garden</i>	<i>This garden, strongly supported by CB4Q has opened its doors to several community events and is the pride and joy of those who live near it. Requesting improvements to the surrounding sidewalk, fence, lighting, and pedestrian paths within the garden.</i>	<i>Sparrow's Nest Community Garden 54-01 101st Street</i>
40/40	LPC	<i>Renovate or upgrade an existing cultural facility</i>	<i>The Old Saint James Episcopal Church is due for exterior and interior restoration and maintenance. The NY Landmarks Conservancy is willing to help again and an assessment would be needed for guidance in restoration work, including repainting and restoring of wood shingled siding, replacement of window facing 51st Ave, necessary updates of interior, sprucing up of side yard with use of remaining slate and stones in the garden to keep character, and installation of historical signage. Also, the need for recognition and restoration of the ancient cemetery around The Reformed Church of Newtown is crucial to protecting the character and history of Elmhurst. Signage honoring the church's and graveyard's history is needed, as well as fencing to protect the open area of the graveyard.</i>	<i>Old St. James & Ref. Newtown Ch</i>

Other Expense Requests

Priority	Agency	Request	Explanation	Location
12/26	DOE	<i>Personnel for Gifted and Talented</i>	<i>The Gifted and Talented Program is in need of more teachers to teach the program. In spite of the fact that SD24 is currently the most overcrowded in the city, programs such as Gifted and Talented (GAT) are in need of more personnel to help to continue and improve upon the current curriculum.</i>	<i>Community Wide</i>

7. Summary of Prioritized Budget Requests

Queens Community Board 4 Capital Requests

Queens Community Board 4 submitted 40 capital budget requests, organized by priority.

Priority / Continued

Support (CS)	Agency	Request	Explanation	Location	Supporters
1/40	QL	Create a new, or renovate or upgrade an existing public library	The population of Community Board 4Q is growing daily. Although the Elmhurst Library branch is under renovation for an expansion, both this branch and the Lefrak City Library will continue to be heavily utilized. A new reference library in the vicinity of 108th Street and Corona Avenue will help service the south east portion of CB4Q which is currently lacking library services.	Corona Avenue 108th Street	
2/40	NYPD	Renovate or upgrade existing precinct houses	The building now housing the 110 Precinct is inadequate. The precinct House is in a densely populated residential area with limited street access and no viable parking for police vehicles. This project was projected for site selection in FY 2013. We are looking to move funding and site selection forward. Renovation to this facility is desperately needed. CB #4Q will continue to support this project until complete.	110th Precinct 94-41 43rd Avenue	Senator Jose Peralta SD 13 Assembly Man Francisco Moya AD 39; Rep. Joseph Crowley 14th District
3/40	DEP	Build new, expand or repair storm sewers	Reconstruction and Upgrade of Existing Sewer System to Accommodate Existing and Future Needs. Queens Boulevard--from the Long Island Expressway to the CSX railroad line.	Community Wide	
4/40	DOT	Repair or construct new curbs or pedestrian ramps	Capital funding is being requested to continue with the substantial amount of damaged curbs throughout the district. Requesting an increase in funding to the NYCDOT curb replacement program/unit.	Community Wide	
5/40	HHC	Provide a new or expanded health care facility	With the former St. John's Hospital now closed, the residents of South Elmhurst and its surrounding vicinity are in need of a medical facility. Elmhurst Hospital is operating beyond capacity, and is struggling to keep up with the demand. The need for a medical center in the neighborhood of South Elmhurst cannot be overlooked.	Community Wide	
6/40	ACS	Other child care requests	Currently, there are an insufficient number of Early Childhood centers in our district that service Infants and Toddlers and their parents. With the expansive growth of immigrant families with young children in our district, there is a great need for Early Childhood Services for children Birth to Three. The services that we are in need of are quality infant-toddler care and early childhood education provided by trained professionals with a culturally sensitive and linguistically sensitive focus.	Community Wide	
7/40	HHC	Provide a new or expanded health care facility	Requesting a rehabilitation center within the confines of Community Board 4. Drug & alcohol counseling, mental health, and physical therapy services could be just some of the services offered.	Community Wide	

7. Summary of Prioritized Budget Requests

Queens Community Board 4 Capital Requests

Queens Community Board 4 submitted 40 capital budget requests, organized by priority.

Priority /
Continued

Support (CS)	Agency	Request	Explanation	Location	Supporters
8/40	NYPD	<i>Provide surveillance cameras</i>	<i>Several sectors within the district are in need of added security measures, specifically the corners spanning the entire stretch of Roosevelt Avenue, the adjoining Junction Boulevard, and a high-crime section of 57th Avenue between 99th Street and Junction Blvd. Requesting that surveillance cameras be considered.</i>	<i>Community Wide</i>	
9/40	DPR	<i>Fund an Existing Community Garden</i>	<i>Requesting improvements to this heavily supported community garden. Gardening equipment, fencing, better lighting, and improved paths are just a few of the improvements being requested by the community.</i>	<i>Corona Tax Payers' Garden Radcliff Ave 102nd Street</i>	
10/40	DPR	<i>Reconstruct or upgrade a park or amenity (i.e. playground, outdoor athletic field)</i>	<i>At just over 3 acres, and located at the northernmost border of Community Board 4, Park of the Americas is in need of refurbishing. The very pressing issue of intoxicated visitors within the park has gotten out of hand. Measures should be taken to discourage such activity. Security measures (benches, led lighting, security cameras, etc.) are all very welcome additions to this park that is located directly across from an elementary school. While we understand that funding has already been allocated to a portion of the park, we are requesting funding to complete second portion of renovations.</i>	<i>Park of the Americas</i>	
11/40	DEP	<i>Build new, expand or repair storm sewers</i>	<i>Reconstruction and Upgrade of Existing Sewer System. 111th Street from Corona Avenue to Roosevelt Avenue.</i>	<i>Community Wide</i>	
12/40	FDNY	<i>Rehabilitate or renovate existing fire houses or EMS stations</i>	<i>Continue funding for complete analyzation, and reparation of firehouses within the district. Engine 287 Ladder 136 Battalion 46 86-53 Grand Avenue Elmhurst, NY 11373</i>	<i>Community Wide</i>	
13/40	DFTA	<i>Create a new senior center or other facility for seniors</i>	<i>The need for an assisted living facility in the area of North Elmhurst is being requested. Requesting that resources be allocated to obtain property, and build such a facility to house the senior population of North Elmhurst.</i>	<i>Community Wide</i>	
14/40	NYPD	<i>Add NYPD parking facilities</i>	<i>For years, Community Board #4Q has requested dedicated vehicle parking for the 110 Precinct vehicles. Currently no off street parking is available for NYPD vehicles.</i>	<i>110th Precinct</i>	

7. Summary of Prioritized Budget Requests

Queens Community Board 4 Capital Requests

Queens Community Board 4 submitted 40 capital budget requests, organized by priority.

Priority /
Continued

Support (CS)	Agency	Request	Explanation	Location	Supporters
15/40	HPD	<i>Provide more housing for extremely low and low income households</i>	<i>Community Board 4 has seen a very steady influx of new residents in the last few years, and will only continue to grow at a steady pace. The lack of affordable housing is encouraging "shacking up" in which large families are living out of single rooms and illegally converted basements. An Affordable Housing facility is desperately needed for both the convenience, and the safety of CB4's residents.</i>	<i>Community Wide</i>	
16/40	DPR	<i>Reconstruct or upgrade a park or amenity (i.e. playground, outdoor athletic field)</i>	<i>William F. Moore Park is a heavily utilized small park in the heart of Corona. The park adjacent to the famous Parkside Restaurant and the Lemon Ice King of Corona is in need of renovation. Improvements to the existing flag pole, additional shrubbery/plantings, and overall infrastructural improvements would be a welcome addition to the surrounding community. Upgrades to the bocce ball court would be a welcome addition as well as proper drainage for the residual clay from the court that can be seen all throughout the park and its surrounding sidewalk(s).</i>	<i>William F. Moore Park 107-06 Corona Avenue</i>	
17/40	DPR	<i>Reconstruct or upgrade a park or amenity (i.e. playground, outdoor athletic field)</i>	<i>Requesting funding be allocated for the renovation of Triangle 90 (90th Street and Roosevelt Avenue) and Answer Triangle (94th Street and Roosevelt Avenue). These two small parks within very close proximity to each other could essentially be funded as a package deal. The commercial corridor of Roosevelt is in need of several infrastructural upgrades, so a superficial renovation to these two key parks along the corridor would be a welcome addition and an asset to local businesses and residents.</i>	<i>Triangle 90 90th St and Roosevelt Ave</i>	
18/40	DOT	<i>Reconstruct streets</i>	<i>Reconstruction of streets in the surrounding area of 41st Avenue and Roosevelt Avenue</i>	<i>41st Avenue Roosevelt Avenue</i>	
19/40	NYCTA	<i>Improve accessibility of transit infrastructure, by providing elevators, escalators, etc.</i>	<i>Comprehensive study should be conducted towards upgrades of these very heavily utilized stations (elevators, handicap accessibility, etc.)</i>	<i>Community Wide</i>	

7. Summary of Prioritized Budget Requests

Queens Community Board 4 Capital Requests

Queens Community Board 4 submitted 40 capital budget requests, organized by priority.

Priority /
Continued

Support (CS)	Agency	Request	Explanation	Location	Supporters
20/40	DPR	<i>Reconstruct or upgrade a park or amenity (i.e. playground, outdoor athletic field)</i>	<i>The reflecting pools near the Unisphere in Flushing Meadows Corona Park (FMCP) have been improperly/barely used over the last few years. We are elated to know that recent funding has allowed for a partial renovation of these pools, However, additional funding is being requested to help with phase 2 of the adaptive renovation for Fountain of the Fairs and reflecting pools at FMCP.</i>	<i>Flushing Meadows Corona Park</i>	
21/40	DPR	<i>Reconstruct or upgrade a building in a park</i>	<i>With the substantial influx of events within this small park, renovations would be a welcome and much needed addition. The beautification of the front entrance, repainting of overhead steel beams, and implementation of security cameras throughout the grounds are all necessary upgrades to meet current and future use.</i>	<i>Playground for All Children</i>	
22/40	DOT	<i>Repair or construct new curbs or pedestrian ramps</i>	<i>Some center island malls on 111th Street were completely renovated, but the remaining malls are in need of a complete overhaul. The curbs should be raised as part of the reconstruction so that illegal parking can be discouraged, and trees and shrubbery should be planted to better the quality of life for residents facing the malls.</i>	<i>111th St Sautell Ave 43rd Ave</i>	
23/40	DOT	<i>Roadway maintenance (i.e. pothole repair, resurfacing, trench restoration, etc.)</i>	<i>This stretch of road adjacent to a major highway (Grand Central Parkway) is in dire need of a reconstruction. Curb replacement/creation should be a priority. Coordination and conversation with State DOT should be looked into.</i>	<i>114th St 43rd Av Roosevelt Av</i>	
24/40	DFTA	<i>Create a new senior center or other facility for seniors</i>	<i>With the growing, aging population within CB4, the need for an assisted living facility cannot be overlooked. While Corona does in fact have such a facility, the area of Elmhurst does not. Requesting that resources be allocated to obtain property, and build such a facility to house the senior population of South Elmhurst.</i>	<i>Community Wide</i>	

7. Summary of Prioritized Budget Requests

Queens Community Board 4 Capital Requests

Queens Community Board 4 submitted 40 capital budget requests, organized by priority.

Priority /
Continued

Support (CS)	Agency	Request	Explanation	Location	Supporters
25/40	DPR	Reconstruct or upgrade a park or amenity (i.e. playground, outdoor athletic field)	American Triangle (Park ID#Q173) is in need of refurbishing. Virtually no green space exists in this very heavily utilized triangle. Concrete and benches are dilapidated due to heavy usage. Issues pertaining to intoxicated visitors to the park are very common during all hours of the day, so we ask that security measures in the form of better lighting, fencing, and benches geared towards discouraging sleeping be taken into consideration. Additional foliage/shrubbery would be a very welcome addition. Additionally Veterans Square (Q055) needs to be refurbished. These two small parks within very close proximity to each other could essentially be funded as a package deal.	American Triangle	
26/40	SCA	Provide a new or expand an existing high school	The lack of high schools within the district is a cause for concern. With the recent influx of Elementary and Middle Schools throughout our district, adding a new high school would help our constituency to stay closer to home and will provide less overcrowding within the SD24.	Community Wide	
27/40	DYCD	Other youth workforce development requests	Our district would benefit greatly from having a youth center that would ideally to support our youth and families. Educational programs, mentoring, homework help, extracurricular activities, and counseling are just some of the services that the youth within our district are in desperate need of. Seeking funding to obtain land, and construct a center within the confines of our district.	Community Wide	
28/40	HPD	Provide more housing for medium income households	Community Board 4 has seen a very steady influx of new residents in the last few years, and will only continue to grow at a steady pace. An emphasis throughout the district is being put into low income housing, however, financial burden does not pertain strictly to low income households. Requesting funding to survey, obtain land, and eventually build an affordable housing facility for medium range income within the district.	Community Wide	
29/40	DOT	Reconstruct streets	A complete reconstruction of this very heavily utilized corridor from Roosevelt Avenue to the Horace Harding Expressway should be looked into. Curb cuts, traffic mitigation plans, street resurfacing, and curb replacements are all sorely needed to meet current and future demand.	Junciont Blvd Roosevelt Av Horace Harding Expwy	

7. Summary of Prioritized Budget Requests

Queens Community Board 4 Capital Requests

Queens Community Board 4 submitted 40 capital budget requests, organized by priority.

Priority /
Continued

Support (CS)	Agency	Request	Explanation	Location	Supporters
30/40	DPR	<i>New equipment for maintenance</i>	<i>Requesting funding for parks maintenance vehicles: 4x4 crew cab, salt spreader, and powerlift gate (Ford-F 250) 4x4 single cab pick up with plow, powerlift gate, and "dumperdog" attachment</i>	<i>Community Wide</i>	
31/40	DOT	<i>Install streetscape improvements</i>	<i>Requesting streetscape improvements to aid in the beautification of commercial corridors throughout the district specifically Junction Blvd. bet Roosevelt Ave. & 43rd Ave. and 82nd Street bet. Roosevelt Ave. & Baxter Ave. While the 82nd Street BID does in fact maintain the latter section, improvements to lighting, flood mitigation, benches, planters etc. would be a welcome addition to both sections of road in the hopes that local businesses would benefit from the beautification.</i>	<i>Community Wide</i>	
32/40	HPD	<i>Other affordable housing programs requests</i>	<i>While the Department of Housing Preservation and Development (HPD) provide loan programs the increased need for such programs can not be overlooked. Community Based Organizations (CBO's) such as Neighborhood Housing Services (NHS), do a great job in providing such services, but the demand for increased programs is exceedingly present specifically in low density (2-3 family) homes.</i>	<i>Community Wide</i>	
33/40	SCA	<i>Provide technology upgrade</i>	<i>Many schools within our district strongly need tech upgrades such as whiteboards, laptops, calculators, tablets, etc. We are aware that the newer schools came with a lot of these tech upgrades already, so focus should be put towards the remaining pre-existing schools.</i>	<i>Community Wide</i>	
34/40	DOT	<i>Expand the frequency or hours of operation of ferries</i>	<i>Infrastructural improvements to commercial corridors throughout the district could help to stimulate local economy. Specific attention should be given to a stretch of road bet. Roosevelt Ave. and Baxter Ave.; a section of CB4Q's only Business Improvement District (BID) in need of flood mitigation. Similarly, Junction Blvd from Roosevelt Ave to 43rd Ave needs similar improvements. Businesses along these segments suffer endlessly from waterlogged basements, and sink holes along their streets. Requesting funding for assistance in identifying the issues present at these very important corridors.</i>	<i>Community Wide</i>	
35/40	OMB	<i>Provide more community board staff</i>	<i>Community Boards are generally understaffed. An increase in funding is sorely needed to maintain current staffing as well as new hiring.</i>	<i>Community Board 4Q 46-11 104 Street</i>	

7. Summary of Prioritized Budget Requests

Queens Community Board 4 Capital Requests

Queens Community Board 4 submitted 40 capital budget requests, organized by priority.

Priority /
Continued

Support (CS)	Agency	Request	Explanation	Location	Supporters
36/40	HPD	<i>Provide more housing for special needs households, such as seniors, or the formerly homeless</i>	<i>With the homeless crisis sweeping throughout the city, many communities have been seeing an increase in the number of shelters popping up within their constituencies. As these shelters continue to increase, to avoid the homeless crisis remaining stagnant it is important housing for formerly homeless as well as seniors be provided.</i>	<i>Community Wide</i>	
37/40	DPR	<i>Reconstruct or upgrade a building in a park</i>	<i>Over the past few years, new synthetic soccer fields were constructed within Flushing Meadows Corona Park, but not all were completed. Funding is being requested to complete the construction of the remaining synthetic soccer fields.</i>	<i>Flushing Meadows Corona Park</i>	
38/40	NYPD	<i>Provide a new NYPD facility, such as a new precinct house or sub-precinct</i>	<i>Requesting that an NYPD satellite station be installed within the confines of Flushing Meadows Corona Park to provide safety in this heavily used large park.</i>	<i>Flushing Meadows Corona Park</i>	
39/40	DPR	<i>Improvements to an Existing Community Garden</i>	<i>This garden, strongly supported by CB4Q has opened its doors to several community events and is the pride and joy of those who live near it. Requesting improvements to the surrounding sidewalk, fence, lighting, and pedestrian paths within the garden.</i>	<i>Sparrow's Nest Community Garden 54-01 101st Street</i>	
40/40	LPC	<i>Renovate or upgrade an existing cultural facility</i>	<i>The Old Saint James Episcopal Church is due for exterior and interior restoration and maintenance. The NY Landmarks Conservancy is willing to help again and an assessment would be needed for guidance in restoration work, including repainting and restoring of wood shingled siding, replacement of window facing 51st Ave, necessary updates of interior, sprucing up of side yard with use of remaining slate and stones in the garden to keep character, and installation of historical signage. Also, the need for recognition and restoration of the ancient cemetery around The Reformed Church of Newtown is crucial to protecting the character and history of Elmhurst. Signage honoring the church's and graveyard's history is needed, as well as fencing to protect the open area of the graveyard.</i>	<i>Old St. James & Ref. Newtown Ch</i>	<i>Community Board 4Q</i>
CS	DEP	<i>Provide new or expand green infrastructure, e.g. greenbelts, bio swales</i>	<i>85th Street abuts MTA /LIRR property. Green infrastructure is sorely needed in this area. DEP has already conducted studies to consider this location for green infrastructure, and has in fact identified it as a potential site. Seeking implementation and completion of this long awaited / approved project.</i>	<i>85 Street 55th Road 57th Road</i>	

7. Summary of Prioritized Budget Requests

Queens Community Board 4 Capital Requests

Queens Community Board 4 submitted 40 capital budget requests, organized by priority.

Priority / Continued

Support (CS)	Agency	Request	Explanation	Location	Supporters
CS	DEP	<i>Build new, expand or repair storm sewers</i>	<i>The triangle area located at Broadway, 76th Street, and 41st Avenue constantly floods at the crosswalk curb cuts. Standing water is always present. Install catch basins in this area to reduce flooding.</i>	<i>Broadway 76th Street 41st Avenue</i>	
CS	DPR	<i>Reconstruct or upgrade a park or amenity (i.e. playground, outdoor athletic field)</i>	<i>Residents of the Elmhurst community have been jogging along the outdoor perimeter of Newtown Field (92nd Street and 57 Avenue) for years as no official track exists within the area. However, a mere 2 blocks away, and sitting directly on the border of CB4, is Hoffman Park, a heavily utilized 3 acre park in need of renovation. In our opinion, this is a prime location for a proper jogging track. Ideally, funding can also be used to alleviate the prominent floor cracks that can be seen throughout the basketball, handball, and baseball fields. We will continue to support the renovation of this park, based on BP allocation of funds.</i>	<i>Hoffman Park</i>	
CS	DPR	<i>Reconstruct or upgrade a park or amenity (i.e. playground, outdoor athletic field)</i>	<i>We must decide whether this should be a passive or active park. On any given morning, tai-chi practitioners can be seen using this park religiously between the hours of 7 and 10am. Upon release of the many schools within walking distance however, the dynamics of this park change. At the very least, we would like to see adult exercise equipment and shrubbery to replace the much worn terrain of this playground.</i>	<i>Newtown Playground</i>	
CS	DOT	<i>Roadway maintenance (i.e. pothole repair, resurfacing, trench restoration, etc.)</i>	<i>The streets within this area (Grand Avenue 57th Avenue, Queens Boulevard) are in great disrepair and many have no viable curbs or no curbs at all.</i>	<i>57th Ave Grand Avenue, LIRR Queens Blvd</i>	
CS	ACS	<i>Provide, expand, or enhance funding for Day Care Slots and Head Start Programs</i>	<i>In order to encourage higher education for the adults of CB4, a day care facility should be looked into. It would encourage parents to work on a steady schedule, and possibly further their education.</i>	<i>Community Wide</i>	
CS	QL	<i>Create a new, or renovate or upgrade an existing public library</i>	<i>Renovation of Elmhurst Library. **Continued Support</i>	<i>Elmhurst Library</i>	
CS	DEP	<i>Build new, expand or repair storm sewers</i>	<i>Reconstruction and Upgrade of Sewer System. Junction Boulevard from the Long Island Expressway to Roosevelt Avenue. 57th Avenue from Queens Boulevard to 99th Street. Horace Harding Expressway from 108th Street to Queens Boulevard.</i>	<i>Community Wide</i>	

7. Summary of Prioritized Budget Requests

Queens Community Board 4 Capital Requests

Queens Community Board 4 submitted 40 capital budget requests, organized by priority.

Priority / Continued

Support (CS)	Agency	Request	Explanation	Location	Supporters
CS	DEP	Other water supply system maintenance requests	Purchase additional equipment for the Bureau of Water Supply and Wastewater collection. Additional equipment for jet flushers, catch basins, and dried bacteria culture trucks.	Community Wide	
CS	DPR	Reconstruct or upgrade a park or amenity (i.e. playground, outdoor athletic field)	Continuing support on the redesign of this park.	Louis Simeone Park	
CS	DSNY	Maintain replacement cycle for trucks and equipment	In the wake of the Blizzard of 2014 several snow plows and utility vehicles underwent extensive damage. In order to meet current and future needs, funding is being requested to maintain the replacement cycle, for DSNY trucks and equipment.	Community Wide	
CS	DPR	Reconstruct or upgrade a park or amenity (i.e. playground, outdoor athletic field)	This location is in need of a redesign that is more compatible with the surrounding area. Funding was recently allocated by CM Dromm (CD25). We are requesting continued support for the duration of this project.	Veteran's Grove	
CS	NYCTA	Repair or upgrade subway stations or other transit infrastructure	Reopen a Train Station on Broadway in Queens for the MTA LIRR Due to heavy public transportation demands CB #4Q is requesting the reopening of a train station on the MTA LIRR Port Washington Line on Broadway in Queens.	Former Broadway LIRR Station Broadway and Whitney Avenue	
CS	DPR	Reconstruct or upgrade a park or amenity (i.e. playground, outdoor athletic field)	CC Moore Playground is a heavily utilized playground. The design is obsolete. Redesign requested to meet the needs of the current park users.	CC Moore Playground	
CS	DOT	Upgrade or create new plazas	Renovation of Corona Plaza Funding has been allocated by CM Ferreras of CD21. *Continued Support	Corona Plaza	

7. Summary of Prioritized Budget Requests

Queens Community Board 4 Expense Requests

Queens Community Board 4 submitted 26 expense budget requests, organized by priority.

Priority	Agency	Request	Explanation	Location	Supporters
1/26	DPR	Forestry services, including street tree maintenance	There is a backlog of requests for tree pruning. The current pruning cycle is far too long. Funding is needed to shorten this cycle, and to restore pruner and climber positions to the DPR. A shorter year pruning cycle will produce stronger, healthier, and better looking trees. A strong maintenance program is needed to care for existing trees and for the continuation of the million additional trees that are to be planted in NYC.	Community Wide	
2/26	DCP	Study land use and zoning to better match current use or future neighborhood needs	CB4Q is experiencing overdevelopment at an alarming rate. Existing one and two family homes are demolished and replaced with high density buildings that are out of character with the surrounding neighborhood. The existing infrastructure was built mainly for low density housing and the additional units place an undue strain on our fragile infrastructure. Requesting that DCP evaluate the current zoning in CB4Q taking into account the current state of our infrastructure, and identify areas where zoning changes would improve the quality of life for our constituency.	Community Wide	
3/26	EDC	Expand graffiti removal services on private sites	The ongoing problem of graffiti plaguing our district continues to grow. While several initiatives (Forever Graffiti Free, NYPD, DSNY) have been effective, more funding to provide more materials to agencies, local civic organizations and community groups would be a huge benefit to our district.	Community Wide	
4/26	DPR	Forestry services, including street tree maintenance	Trees are a vital component of our environment. Homeowners affected by tree roots lifting sidewalks should not have to wait years before repairs are completed. Although funding has increased in the past, an additional increase in FY 2017 is requested to help complete the existing backlog of requests.	Community Wide	
5/26	DOT	Other transportation infrastructure requests	Increase and maintain funding for the curb and sidewalk replacement program.	Community Wide	
6/26	FDNY	Upgrade communication equipment to improve emergency response	Requesting that existing ERS boxes throughout the district retain their cast iron bases, and be retrofitted with the more modern "push button" system vs. complete replacement. These boxes have a direct intercom link to both Fire and Police Dispatchers, and as such should be wired to existing electrical poles to keep them functioning.	Community Wide	
7/26	DOT	Other transportation infrastructure requests	The rapid increase in population within CB4Q has left several requests for repairs pending for far longer than they should be. Requesting an increase in staff for roadway maintenance (pothole and reconstruction crews). Additionally requesting an increase in staffing for replacement of missing/damaged signs (traffic device maintainers)	Community Wide	

7. Summary of Prioritized Budget Requests

Queens Community Board 4 Expense Requests

Queens Community Board 4 submitted 26 expense budget requests, organized by priority.

Priority	Agency	Request	Explanation	Location	Supporters
8/26	DSNY	<i>Increase enforcement of illegal posting laws</i>	<i>Several commercial corridors and their surrounding areas are infamous for illegal postings on utility poles, walls, and construction fences. The entire stretch of Roosevelt Avenue from 72nd Street to 114th Street and its adjacent side streets are havens for these postings. Business owners do their best to remove these flyers, but with zero enforcement, it is a losing and discouraging battle. Funding is being requested to bring enforcement to our district.</i>	<i>Roosevelt Ave 72nd St 114th St</i>	
9/26	NYPD	<i>Provide additional patrol cars and other vehicles</i>	<i>Requesting 2 to 3 unmarked vehicles to meet current and future needs.</i>	<i>110th Precinct</i>	
10/26	DPR	<i>Provide better park maintenance</i>	<i>The large amount of parks within the district combined with the lack of proper personnel to maintain them continues to be a problem throughout the district. Requesting additional parks maintenance personnel, Parks Enforcement Police (PEP), foresters to meet current and future needs.</i>	<i>Community Wide</i>	
11/26	FDNY	<i>Expand funding for fire prevention and life safety initiatives</i>	<i>The FDNY Fire Safety Educational Unit needs additional funding to provide smoke detectors and carbon monoxide detectors for distribution to the public. This is a public service that will save lives.</i>	<i>Community Wide</i>	
12/26	HPD	<i>Expand tenant protection programs</i>	<i>Tenant protection services are designed to preserve affordable housing by detecting and curtailing patterns and practices of landlord fraud. With the dramatic growth seen within CB4 our constituency is in need of extensive services that would help them to preserve their quality of life. Funding is being requested for expansion of these programs.</i>	<i>Community Wide</i>	
12/26	DOE	<i>Personnel for Gifted and Talented</i>	<i>The Gifted and Talented Program is in need of more teachers to teach the program. In spite of the fact that SD24 is currently the most overcrowded in the city, programs such as Gifted and Talented (GAT) are in need of more personnel to help to continue and improve upon the current curriculum.</i>	<i>Community Wide</i>	
13/26	DOHMH	<i>Other animal and pest control requests</i>	<i>With mosquito-borne illnesses such as Zika, and West Nile within our communities, funding request would entail more staffing, and the continuation of public awareness campaigns to teach prevention in multiple languages. Our public plazas and abandoned properties are particularly vulnerable to rats. Requesting funding to increase awareness, and mitigation of pests (rats and mosquitoes) throughout the community.</i>	<i>Community Wide</i>	
14/26	DOHMH	<i>Create or promote programs for education and awareness on nutrition, physical activity, etc.</i>	<i>The communities of Elmhurst and Corona both see farmers' markets, and several campaigns geared towards condoning walking, and riding vs driving. Our communities would like to continue to see expansions of programs (WIC at farmers' markets, bike helmet giveaways, health insurance, etc.) Material and outreach should be emphasized in multiple languages.</i>	<i>Community Wide</i>	

7. Summary of Prioritized Budget Requests

Queens Community Board 4 Expense Requests

Queens Community Board 4 submitted 26 expense budget requests, organized by priority.

Priority	Agency	Request	Explanation	Location	Supporters
15/26	SBS	Support BID formation planning	CBQ currently has a small BID stretching from Roosevelt Avenue to Baxter Avenue, however other sectors throughout the district would benefit from this initiative. The community of Elmhurst, an up-incoming commercial mecca would greatly benefit from a potential BID, specifically along the corridor of Broadway from Queens Boulevard to Baxter Avenue.	Community Wide	
16/26	DYCD	Provide, expand, or enhance after school programs for elementary school students (grades K-5)	There is a tremendous need for after school programs for elementary school students grades k-5. At this early stage in the students' lives, it is important to have enriching programs that are both educational and fun. Said programs will also help parents who have limited work hours, will help the children with social skills, and give students an advantage as they progress in their education.	Community Wide	
17/26	DEP	Provide new or expand green infrastructure, e.g. greenbelts, bio swales	Requesting more staffing for the maintenance of the recently implemented Green Infrastructure initiative. Currently DEP staff is scheduled to maintain and clean these sites on a weekly basis, but a majority of our sites go for weeks, possibly months with no visits. Additionally, CB4Q has reported several cases in which homeowners receive summonses for garbage in these bioswales. Current staffing is simply not enough. Requesting funding to meet current and future demand.	Community Wide	
18/26	QL	Extend library hours or expand and enhance library programs	Community Board #4Q's catchment area of Corona, Corona Heights, and Elmhurst is densely populated with a wide variety of ethnic groups comprised of children, adults, and senior citizens. Our library branches and programs the libraries provide are heavily utilized. We will continue to support six day service, look to support 7 day service when applicable.	Community Wide	
19/26	DSNY	Increase enforcement of dirty sidewalk/dirty area/failure to clean area laws	Several areas of our district are seeing a substantial amount of garbage pile up, with little to no penalty to the property owners. Commercial corridors such as Queens Boulevard, Roosevelt Avenue, Junction Boulevard, Broadway, and National Street near Corona Plaza are infamously known for excessive littering, but enforcement is scarce. Inspectors have often been witnessed turning a blind eye to several establishments. The quality of life of our small businesses along these specific corridors are in need of a more cohesive campaign to clean up our streets.	Community Wide	
20/26	DSNY	Provide more frequent organics/recycling collection service for schools and institutions	We are looking for funding to help and support organics pickups in schools. Currently, the organics collection can be seen primarily within QW05, but many of our schools don't participate in the program	Community Wide	

7. Summary of Prioritized Budget Requests

Queens Community Board 4 Expense Requests

Queens Community Board 4 submitted 26 expense budget requests, organized by priority.

Priority	Agency	Request	Explanation	Location	Supporters
21/26	DOT	<i>Other transportation infrastructure requests</i>	<i>Requesting surveying and studies to consider infrastructural improvements (additional lighting, signage and street maintenance/curb replacement/repair) to this dark stretch of road in the backstreets of Elmhurst which was recently approved by DEP for Green Infrastructural upgrades.</i>	<i>85th St 55th Ave 57th Ave</i>	
22/26	FDNY	<i>Other FDNY facilities and equipment requests</i>	<i>The majority of the firehouses within our district already have generators in case of a power outage. However, Engine 289 in Corona is still operating with an above ground, multiple unit setup. Requesting funding to provide an in ground generator for this heavily utilized station.</i>	<i>Engine 289 97-28 43rd Avenue</i>	
23/26	DSNY	<i>Other garbage collection and recycling requests</i>	<i>The tenants of a local residential building took it upon themselves to come up with funding to purchase and install dog waste stations in the area surrounding their building. Since then, there has been a noted decrease in the amount of dog droppings along the street. Because of the moratorium on Curb Your Dog Signs, this request would be a much welcomed initiative to be brought up to Elected Officials. These small structures could be stationed near parks, and in high pedestrian traffic areas.</i>	<i>Community Wide</i>	
24/26	SBS	<i>Support BID formation planning</i>	<i>Community Board 4's only BID is grossly understaffed taking into account its catchment area, and its growth potential. Requesting that funds be allocated to increase the staffing for this BID in the heart of Jackson Heights and Elmhurst.</i>	<i>82nd Street Partnership 37-06 82nd Street</i>	
25/26	DYCD	<i>Provide, expand, or enhance after school programs for middle school students (grades 6-8)</i>	<i>The low allocation of funds within CB4 is surprisingly low considering SD 24 is currently the most overcrowded in the city. Fund allocation within CB4 for such programming is a mere \$3.6 million, in contrast to CB6 (Rego Park) at \$4.4 million, CB1 (Astoria) at close to \$6 million, and CB12 (Jamaica) at close to \$10 million. Emphasizing the dire need for after school programming for adolescents grades 6-8 who at this stage in their lives need more aggressive mentoring and help with school work.</i>	<i>Community Wide</i>	

Appendix - Supporting Materials

The Community Board has provided the following supporting materials which can be accessed by clicking on the link(s) below or by copying and pasting the link(s) into a browser.

Parks, Cultural and other Community Facilities



LPC-Old St. James Ep. Church

<https://a002-oom03.nyc.gov/IRM/Handlers/Campaign/Attachments.ashx?attachmentId=DAFB4FF6-0302-4B3A-9BA5-D49C3AE27FA7>