

***Statements of Community
District Needs
and
Community Board
Budget Requests***

Fiscal Year
2020



Published by:
NYC
PLANNING
February 2019

**Queens
Community District
4**

INTRODUCTION

The annual Statements of Community District Needs (CD Needs Statements) and Community Board Budget Requests (Budget Requests) are Charter mandates that form an integral part of the City's budget process. Together, they are intended to support communities in their ongoing consultations with city agencies, elected officials and other key stakeholders and influence more informed decision making on a broad range of local planning and budget priorities. This report also provides a valuable public resource for neighborhood planning and research purposes, and may be used by a variety of audiences seeking information about New York City's diverse communities.

HOW TO USE THIS REPORT

This report represents Queens Community Board 4's *Statement of Community District Needs and Community Board Budget Requests for Fiscal Year (FY) 2020*. This report contains the formatted but otherwise unedited content provided by the community board, collected through an online form available to community boards from June to November 2018.

Community boards may provide substantive supplemental information together with their Statements and Budget Requests. This supporting material can be accessed by clicking on the links provided in the document or by copying and pasting them into a web browser, such as Chrome, Safari or Firefox.

If you have questions about this report or suggestions for changes please contact:

CDNEEDS_DL@planning.nyc.gov

This report is broadly structured as follows:

a) Overarching Community District Needs

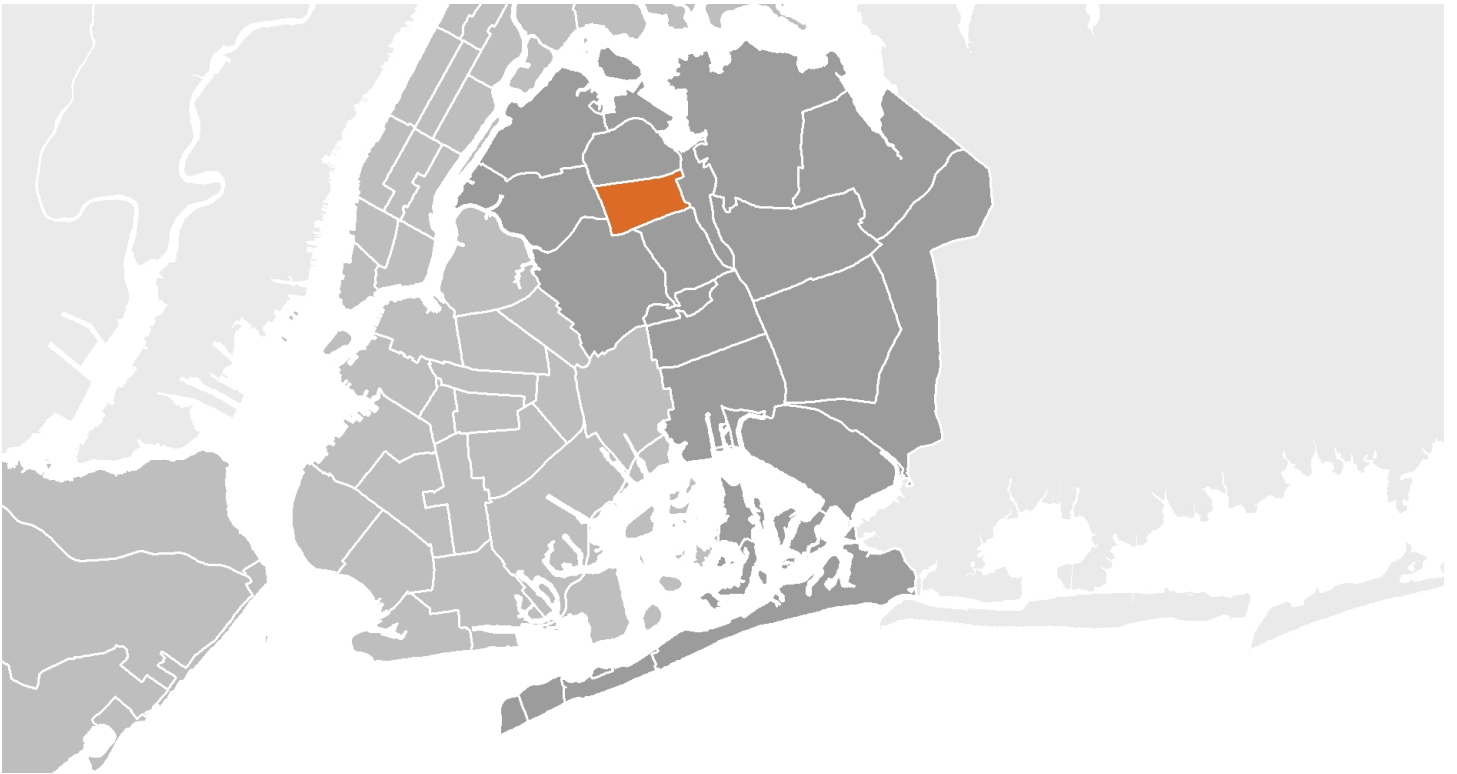
Sections 1 – 4 provide an overview of the community district and the top three pressing issues affecting this district overall as identified by the community board. Any narrative provided by the board supporting their selection of their top three pressing issues is included.

b) Policy Area - Specific District Needs

Section 5 is organized by seven distinct policy areas aligned with the service and program areas of city agencies. For each policy area, community boards selected the most important issue for their districts and could provide a supporting narrative. The policy area section also includes any agency-specific needs and a list of relevant budget requests submitted by the community board. If the community board submitted additional information outside of a specific policy area, it may be found in Section 6.

c) Community Board Budget Requests

The final section includes the two types of budget requests submitted to the City for the FY20 budget cycle; one list for capital and another for expense budget requests. For each budget request, community boards were able to provide a priority number, explanation, location, and supporters. OMB remains the definitive source on budget requests submitted to city agencies.



Statements of Community District Needs

and

Community Board Budget Requests

for

Queens Community District 4 Fiscal Year 2020

Published by the Department of City Planning
February 2019

Disclaimer

This report represents the Statements of Community District Needs and Community Board Budget Requests of Queens Community Board 4 for Fiscal Year 2020. This report contains the formatted but otherwise unedited content provided by the community board.

Budget Requests: Listed for informational purposes only. OMB remains the definitive source on budget requests and budget request responses.

Budget Priorities: Priority numbers apply to expense and capital Budget requests from all policy areas. A complete list of expense and capital budget requests by this Board sorted by priority can be found in Section 7 of this document.

Supporting Materials: Some community boards provided substantive supplemental information. This supportive material can be accessed by clicking on the links provided in the document or by copying and pasting the links provided in the Appendix into a browser.

TABLE OF CONTENTS

- 1. Community Board Information**
 - 2. Community District Profile and Land Use**
 - 3. Overview of Community District**
 - 4. Top Three Pressing Issues Overall**
 - 5. Summary of Community District Needs and Budget Requests**
 - Health Care and Human Services**
 - Youth, Education and Child Welfare**
 - Public Safety and Emergency Services**
 - Core Infrastructure, City Services and Resiliency**
 - Land Use, Housing and Economic Development**
 - Transportation**
 - Parks, Cultural and other Community Facilities**
 - 6. Additional Information and Other Budget Requests**
 - 7. Summary of Prioritized Budget Requests**
 - Table of All Capital Requests**
 - Table of All Expense Requests**
- Appendix - Supporting Materials**

1. Community Board Information

Queens Community Board 4

Address: 46-11 104 Street, 1st Floor

Phone: 718-760-3141

Email: ccassagnol@cb.nyc.gov

Website: nyc.gov/queenscb4

Chair: Mr. Damian Vargas

District Manager: Mr. Christian Cassagnol

2. Community District Profile

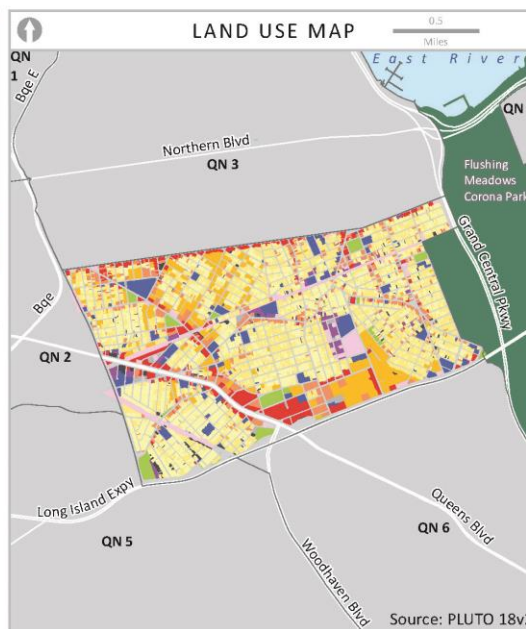
Visit the Community District Profiles to view data, maps, and other resources describing New York City's 59 community districts at: <https://communityprofiles.planning.nyc.gov/>

Queens Community District 4



Neighborhoods¹: Corona, Corona Heights, Elmhurst, Lefrak City

POPULATION & DENSITY		
2000 ²	2010 ³	2000-2010
167,005	172,598	+3%
2012-2016 Estimate ⁴		142,289
Square Miles		2.4
Population Density		71,916/sq mi



COMMUNITY BOARD PERSPECTIVES

Top 3 pressing issues identified by Queens Community Board 4 in 2018:

1. Neighborhood preservation
2. Schools
3. Traffic

To learn more, please read Queens CD 4's Statements of Community District Needs and Community Board Budget Requests for Fiscal Year 2020.

Website: www.nyc.gov/queenscb4
Email: qn04@cb.nyc.gov

Land Use Category	# Lots	% Lot Area
1 & 2 Family Bldgs	4,936	28%
Multifamily Walk-up	4,920	29%
Multifamily Elevator	189	11%
Mixed Use	835	8%
Commercial	397	7%
Industrial	69	2%
Transportation/Utility	37	3%
Public/Institutional	126	7%
Open Space	24	3%
Parking	161	2%
Vacant	225	1%
Other	16	0%

Click here for a more detailed land use map of Queens CD 4

A Snapshot of Key Community Indicators

COMMUNITY ASSETS ⁵	
Public Schools	35
Public Libraries	2
Hospitals and Clinics	6
Parks	12
Click to visit the NYC Facilities Explorer	

RENT BURDEN ^{4, 6}	
Queens CD 4	Queens
56%	48%
of households spend 35% or more of their income on rent	NYC
	45%

ACCESS TO PARKS ⁷	
Queens CD 4	Citywide Target
76%	85%
of residents live within walking distance of a park or open space	

MEAN COMMUTE TO WORK ^{4, 8}	
Queens CD 4	Queens
43	43 minutes
minutes	NYC
	40 minutes

LIMITED ENGLISH PROFICIENCY ⁴	
Queens CD 4	Queens
52%	29%
of residents 5 years or older have limited English proficiency	NYC
	23%

CRIME RATE ⁹	
Queens CD 4	Queens
7.8	8.7
major felonies were reported per 1,000 residents in 2016	NYC
	11.8

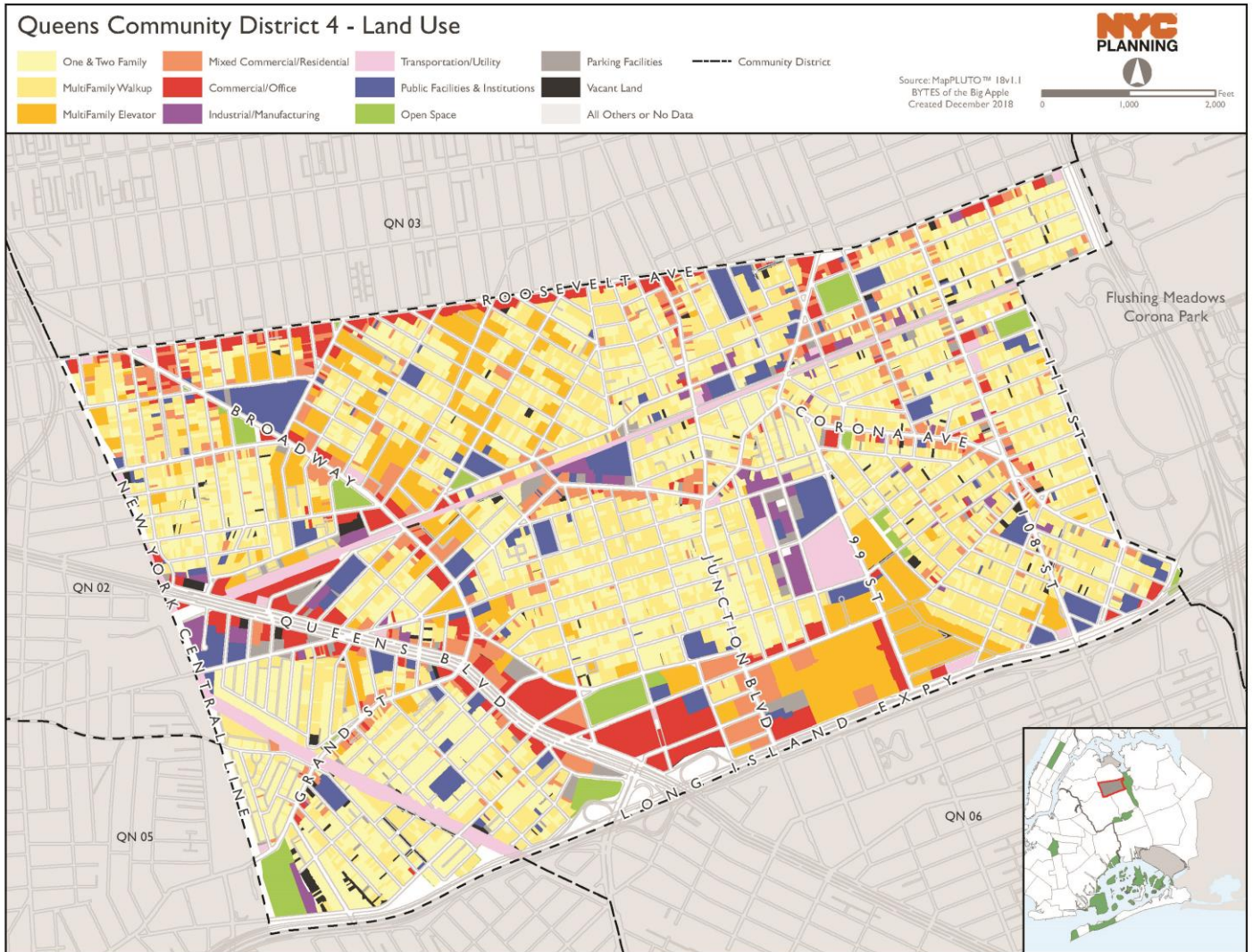
EDUCATIONAL ATTAINMENT ^{4, 10}	
Queens CD 4	Queens
21%	31%
of residents 25 years or older have earned a bachelor's degree or higher	NYC
	36%

UNEMPLOYMENT ^{4, 10}	
Queens CD 4	Queens
3.9%	5%
of the civilian labor force was unemployed on average from 2012 to 2016	NYC
	5.5%

NYCgov POVERTY MEASURE ¹¹	
Queens CD 4	Queens
27%	20%
of residents have incomes below the NYCgov poverty threshold. See the federal poverty rate here.	NYC
	20%

¹Neighborhoods may be in multiple districts. Names and boundaries are not officially designated. ²2000 US Census; ³2010 US Census; ⁴American Community Survey 2012-2016 5-Year Estimates, calculated for Public Use Microdata Areas (PUMAs). PUMAs are geographic approximations of community districts. ⁵NYC Dept of City Planning Facilities Database (2017); ⁶Differences of less than 3 percentage points are not statistically meaningful. ⁷NYC Dept of Parks and Recreation (DPR) (2016). DPR considers walking distance to be 1/4 mile for parks less than 6 acres, and 1/2 mile for larger parks and pools. ⁸Differences of less than 2 minutes are not statistically meaningful. ⁹NYPD CompStat, Historic Complaint Data (2017); ¹⁰Differences of less than 2 percentage points are not statistically meaningful. ¹¹2011-2015 NYCgov Poverty Measure by PUMA. This metric from the Mayor's Office for Economic Opportunity accounts for NYC's high cost of housing, as well as other costs of living and anti-poverty benefits.

2. Community District Land Use



3. Overview of Community District

Queens Community Board 4Q (CB4Q) is a culturally diverse community that encompasses the area of Corona (south of Roosevelt Avenue) and Elmhurst. The total land area of Community Board 4Q is 2.4 square miles, bounded by Roosevelt Avenue to the North, Flushing Meadow Corona Park (FMPC) to the east, the Horace Harding Expressway to the south, and New York Connecting railroad (CSX) to the West. According to the 2010 Census, at the time the population of CB4Q was 172,598 a 3.3% increase from the 2000 census.

Overdevelopment- The ongoing problem of overdevelopment continues to grow within CB#4Q. The current levels of service and infrastructure can no longer absorb the additional housing units. In order to secure the future stability of CB4Q, careful consideration must be given to the rezoning of our community.

Health Issues- For several years now, CB4Q has proudly been home to two farmers markets, (Corona Plaza, and Elmhurst Hospital). Zumba classes, and other health related initiatives geared towards providing our community with the knowledge and resources they need to stay fit are happily supported throughout our constituency.

Urgent care facilities throughout the district are indeed a welcome addition as many constituents see these facilities as a cheaper, quicker alternative to the negative stigmas associated with an actual hospital. Although these facilities have gained popularity, the fact remains that the residents of the surrounding neighborhoods of Elmhurst, Corona, Maspeth, and Glendale are still in need of an actual hospital. Urgent care facilities are not made to replace hospitals, but to work in conjunction with them.

Sections of the district specifically in Elmhurst are in need of affordable senior housing. Exorbitant rent, and overdevelopment throughout our community are leaving many seniors displaced with no place to turn. Waiting lists on housing take years to move, and seniors are left with little to no choice as they wait for a spot to be available. Funding is sorely needed to identify and obtain property to construct such a facility.

Youth/Education- Although New York City as a whole will experience a downward trend in school enrollment in the next ten years, the school district encompassing CB#4Q (D24) will see an upward trend in enrollment. Schools cannot be built fast enough. We will continue to support the Department of Education and the School Construction Authority in their efforts to identify additional new sites for schools.

With the expansive growth of immigrant families with young children in our district, there is a great need for Early Childhood Services for children Birth to Three. The services that we are in need of are quality infant-toddler care and early childhood education provided by trained professionals with a culturally sensitive and linguistically sensitive focus. Currently, there are an insufficient number of Early Childhood centers in our district that service Infants and Toddlers and their parents and we are in desperate need of facilities to provide the space to render such services.

According to a recent Unicef report on early childhood development, an economically disadvantaged child has the opportunity to thrive socially and academically when provided with early intervention and early childhood services.

NYPD - Facilities Since 1988, the Community Board has put the renovation of the 110th Precinct at the very top of its yearly capital requests. For approximately 7 decades, this facility has seen little to no improvements to its overall infrastructure. Both within and outside the facility, structural crumbling, loose bricks, and flooding are common. As one of the busiest precincts in Queens North, with close to 250 uniformed and civilian personnel (and growing), this structure is a potential danger that is unfair to those tasked with keeping our communities safe.

Additionally, the community has been requesting a proper parking facility for the 15+ marked and unmarked vehicles being stored along the residential block surrounding the precinct. In a district where parking is at a premium, we should be looking to provide parking for our officers all the while returning parking spaces to the residents of the surrounding community.

NYPD- Illegal Car Sales- Throughout the district of Community Board 4 there is an issue with vehicles illegally displaying "for sale" signs on them. While we continue to be at the forefront in bringing these vehicles to the attention of the

3. Overview of Community District

agencies responsible, there simply isn't enough manpower, and laws are far too lax. Vehicles are being blatantly parked along streets; some with plates, others without, and in many cases those who do have plates only display them in the rear of the vehicle enabling them to use the vehicle's second plate on another one. The majority of these vehicles are being sold by local repair shops who have accepted the low summonses as the norm while they continue to sell the vehicles. The Dept. of Sanitation can 'tag' a vehicle with no plates, but due to the multiple day turnaround time, the vehicle is moved far before enforcement is able to impound it. The low cost of the summonses is simply not enough to deter the sales of these vehicles. Our Board is in full support of legislation such as this that will help to stop these unfair practices from continuing to manifest themselves within our neighborhoods.

4. Top Three Pressing Issues Overall

The three most pressing issues facing Queens Community Board 4 are:

- *Neighborhood preservation (development trends)*
- *Schools*
- *Traffic*

Neighborhood Preservation - (Development needs) The ongoing problem of overdevelopment continues within CB#4Q. It is not uncommon that older housing stock, (one and two family homes) are demolished and replaced with new buildings that house three and four family homes. The current levels of service and infrastructure can no longer absorb the additional housing units. In order to secure the future stability of CB4Q, careful consideration must be given to the zoning of our community.

Schools- This same issue has an overbearing effect on our schools. The over-usage of already limited City services will only continue to have a detrimental effect on our youth population. Overcrowded schools are common ground, after school programs are overcrowded, and the libraries within our vicinity are used far beyond capacity.

Traffic- Narrow residential streets combined with lack of egress create a traffic burden that severely affects the quality of life of our already burdened constituency. The areas of Corona and Elmhurst have seen an increase in tourism that has very quickly left our communities in confusion and frustration specifically with regards to an overabundance of vehicles throughout our district. Within the last year, Elmhurst has undergone several changes such as the Queens Boulevard safety plan, and a recent uptick in highly popular businesses within the Queens Center Mall, while Corona remains adjacent to Flushing Meadows Corona Park, a park that sees increased programming throughout the year.



Main Issue Related to Health Care and Human Services

Access to healthy food and lifestyle programs

For several years now, CB4Q has proudly been home to two farmers markets, (Corona Plaza, and Elmhurst Hospital). Zumba classes, and other health related initiatives geared towards providing our community with the knowledge and resources they need to stay fit are happily supported throughout our constituency. Continued support for funding of these programs including the addition of more is essential to the well-being of our fast growing district. Between 2017 and 2018, CB4 was recently host to several ShapeUp NYC Programs throughout the district which were poorly attended due to lack of proper community outreach. An increase to these programs with an emphasis on raising awareness to their existence would be beneficial to the district. Outdoor spaces/parks should also be taken into consideration as they will serve as conduits for a healthier lifestyle, i.e.: anti smoking campaigns, GrowNYC demonstrations

Community District Needs Related to Health Care Facilities and Programming

Community Board4Q is home to Elmhurst Hospital Center, a trauma center within the heart of Queens that sees a tremendous amount of patients spanning the entire borough. While the hospital has been recipient of several upgrades and expansions over the last few years with more to come, the truth is that it is still the only trauma center within immediate reach of our communities. Urgent care facilities throughout the district are indeed a welcome addition as many constituents see these facilities as a cheaper, quicker alternative to the negative stigmas associated with an actual hospital. Although these facilities have gained popularity, the fact remains that the residents of the surrounding neighborhoods of Elmhurst, Corona, Maspeth, and Glendale are still in need of an actual hospital. Urgent care facilities are not made to replace hospitals, but to work in conjunction with them. We will continue to support public campaigns emphasizing the importance and the need for quality health insurance and preventive measures. Emphasis must be put into providing this information in multiple languages.

Community District Needs Related to Facilities and Programming for Older New Yorkers

While Corona has seen new senior living facilities (HANAC) as of late, sections of the district specifically in Elmhurst are in need of affordable senior housing. Exorbitant rent, and overdevelopment throughout our community are leaving many seniors displaced with no place to turn. Waiting lists on housing take years to move, and seniors are left with little to no choice as they wait for a spot to be available. Funding is sorely needed to identify and obtain property to construct such a facility.

Community District Needs Related to Facilities and Services for the Homeless

With the amount of hotel shelters showing up in our communities, the general consensus within our neighborhoods is that this idea is simply not a solution. Hotels are often built in neighborhoods that are heavy on tourism and foot traffic with the intention on capitalizing on visitors to our communities, yet many of our hotels operate with 100% capacity for homeless individuals. While we fully understand that nobody should be homeless, and that it can happen to anyone, this initiative was not well thought out as several shelters have multigenerational families in them. Communities are often sneakily informed at zero hour about new hotels that have already been filled to capacity with homeless individuals. Discussions on proper solutions, are rare, and this initiative does little but fill the pockets of hotel operators with no accountability being shown by the Administration towards our communities.



Capital Requests Related to Health Care and Human Services

Priority	Agency	Request	Explanation	Location
5/40	HHC	Provide a new or expanded health care facility	With the former St. John's Hospital now closed, the residents of South Elmhurst and its surrounding vicinity are in need of a medical facility. Elmhurst Hospital is operating beyond capacity, and is struggling to keep up with the demand. The need for a medical center in the neighborhood of South Elmhurst cannot be overlooked.	Community Wide
7/40	HHC	Provide a new or expanded health care facility	Requesting a rehabilitation center within the confines of Community Board 4. Drug & alcohol counseling, mental health, and physical therapy services could be just some of the services offered.	Community Wide
20/40	DFTA	Create a new senior center or other facility for seniors	With the growing, aging population within CB4, the need for an assisted living facility cannot be overlooked. While Corona does in fact have such a facility, the area of Elmhurst does not. Requesting that resources be allocated to obtain property, and build such a facility to house the senior population of South Elmhurst.	Community Wide
39/40	DHS	Expand street outreach	Breaking Ground currently operates via 4 outreach teams in Queens 24/7/365 (in all weather), as well as a case management staff that participates in client transports to medical appointments, housing appointments, housing placements, etc., One of their biggest needs is vehicles. While the agency does have a fleet, vehicles' life spans are shorter than average since their mileage racks up so quickly. Requesting funding be allocated to an increase in vehicles to continue providing this very necessary service.	Community Wide



Expense Requests Related to Health Care and Human Services

Priority	Agency	Request	Explanation	Location
13/25	DOHMH	Other animal and pest control requests	With mosquito-borne illnesses such as Zika, and West Nile within our communities, funding request would entail more staffing, and the continuation of public awareness campaigns to teach prevention in multiple languages. Our public plazas and abandoned properties are particularly vulnerable to rats. Requesting funding to increase awareness, and mitigation of pests (rats and mosquitoes) throughout the community.	Community Wide
14/25	DOHMH	Create or promote programs for education and awareness on nutrition, physical activity, etc.	The communities of Elmhurst and Corona both see farmers' markets, and several campaigns geared towards condoning walking, and riding vs driving. Our communities would like to continue to see expansions of programs (WIC at farmers' markets, bike helmet giveaways, health insurance, etc.) Material and outreach should be emphasized in multiple languages.	Community Wide
22/25	DHS	Provide rental assistance/vouchers for permanent housing	With the proliferation of hotel shelters throughout the city, the need for services to get our residents out of shelters should be more heavily emphasized. Family shelters within the district currently house multi generational homeless families The cost of housing these families into shelters/hotels far exceeds the cost of permanent housing. Funding should instead be allocated to preventative programs, and those geared towards removing people from the "system".	Community Wide
23/25	HRA	Provide Metrocards to help low-income New Yorkers get to work and around the City	With the ridership at many of our stations as high as 17 million riders per year for Roosevelt and as high as 6.8 million for Woodhaven Blvd, it is obvious that our residents are using mass transit as a means to get around. In conjunction with this, the low income cap throughout the district should reflect the needs for such a service. Requesting funding for metro cards to low income residents throughout the areas of Corona and Elmhurst.	Community Wide
24/25	DFTA	Enhance programs for elder abuse victims	Requesting funding to expand Elder Abuse Prevention programs throughout the district.	Community Wide
25/25	DFTA	Provide additional senior center staffing	In previous years, DFTA's vision to create parity in our senior centers was accomplished for FY19. Requesting an increase to existing funding in order to enhance case management helping to reduce caseloads to 65 would be beneficial to our senior population.	Community Wide



Main Issue Related to Youth, Education and Child Welfare

School and educational facilities (Capacity)

Although New York City as a whole will experience a downward trend in school enrollment in the next ten years, the school district encompassing CB#4Q (D24) will see an upward trend in enrollment. Schools cannot be built fast enough. We will continue to support the Department of Education and the School Construction Authority in their efforts to identify additional new sites for schools.

Community District Needs Related to Educational Facilities and Programs

The multiple benefits of providing Early Childhood Services and Parent Services to an economically disadvantaged immigrant community cannot be overlooked. The utter lack of such services in our district for these children and families is cause for concern, as such programs would contribute to the well-being of parents and children alike. The lack of after school programs throughout the board continues to be an area of difficulty for many of our residents. The need for mentoring, homework help, counseling, and overall social networking is unfortunately missing from our community. In addition to the allocation of funds for after school programming, the need for a multi-purpose community/recreational center is a request that our board has held onto for some time. Such a center would provide the youth of CB4 with the social skills required for their growth. Communal activities such as sports, arts and crafts, and after school workshops are just a few of the different programs that could be offered at such a facility, especially in a day where social media, smart phones and video games reign above all else. Our youth lacks basic social skills than can only be obtained through communal activities and physical, social contact with each other. For this reason, our constituency is asking that acquisition of land and furthermore, the construction of an intergenerational (seniors and youth under one roof) and/or after school center within our district be considered.

Community District Needs Related to Services for Children and Child Welfare

With the expansive growth of immigrant families with young children in our district, there is a great need for Early Childhood Services for children Birth to Three. The services that we are in need of are quality infant-toddler care and early childhood education provided by trained professionals with a culturally sensitive and linguistically sensitive focus. Currently, there are an insufficient number of Early Childhood centers in our district that service Infants and Toddlers and their parents and we are in desperate need of facilities to provide the space to render such services. According to a recent Unicef report on early childhood development, an economically disadvantaged child has the opportunity to thrive socially and academically when provided with early intervention and early childhood services. In addition, the report states the following:

- Brain development is most rapid in the early years of life. When the quality of stimulation, support and nurturance is deficient, child development is seriously affected.
- The effects of early disadvantage on children can be reduced. Early interventions for disadvantaged children lead to improvements in children's survival, health, growth, and cognitive and social development.
- Children who receive assistance in their early years achieve more success at school. As adults they have higher employment and earnings, better health, and lower levels of welfare dependence and crime rates than those who don't have these early opportunities.
- Efforts to improve early child development are an investment, not a cost. Available cost-benefit ratios of early intervention indicate that for every dollar spent on improving early child development, returns can be on average 4 to 5 times the amount invested, and in some cases, much higher.



Community District Needs Related to Youth and Community Services and Programs

The allocation of funds for after school programming, and the need for a multi-purpose community/recreational center is a request that our board has held onto for some time. Such a center would provide the youth of CB4 with the social skills required for their growth. Communal activities such as sports, arts and crafts, and after school workshops are just a few of the different programs that could be offered at such a facility, especially in a day where social media, smart phones and video games reign above all else. Our youth lacks basic social skills than can only be obtained through communal activities and physical, social contact with each other. For this reason, CB4 is asking that acquisition of land and furthermore, the construction of an intergenerational and/or after school center within our district be considered. It is imperative that we give our youth, our future a place in their own community where mentorship and afterschool programs will be provided.



Capital Requests Related to Youth, Education and Child Welfare

Priority	Agency	Request	Explanation	Location
6/40	DOE	Provide, expand, or enhance funding for Child Care and Head Start programs	Currently, there are an insufficient number of Early Childhood centers in our district that service Infants and Toddlers and their parents. With the expansive growth of immigrant families with young children in our district, there is a great need for Early Childhood Services for children Birth to Three. The services that we are in need of are quality infant-toddler care and early childhood education provided by trained professionals with a culturally sensitive and linguistically sensitive focus.	Community Wide
21/40	SCA	Provide a new or expand an existing high school	The lack of high schools within the district is a cause for concern. With the recent influx of Elementary and Middle Schools throughout our district, adding a new high school would help our constituency to stay closer to home and will provide less overcrowding within the SD24.	Community Wide
29/40	SCA	Provide technology upgrade	Many schools within our district strongly need tech upgrades such as whiteboards, laptops, calculators, tablets, etc. We are aware that the newer schools came with a lot of these tech upgrades already, so focus should be put towards the remaining pre-existing schools.	Community Wide
38/40	ACS	Other foster care and child welfare requests	Although ACS strives to keep families together, there are times when children need alternative placements such as foster homes. Training of foster families increases the child's safety and ability to navigate through the difficult journey of being placed outside his/her home. In the first 8 months of FY 18, there was an increase in certified foster homes; more importantly is how well trained these homes are. Children placed into a foster family have been inevitably traumatized on different levels and need support of caring and knowledgeable families to succeed. Therapeutic foster homes are homes that have been identified and specifically trained to work with special needs children. Requesting funds for continued foster parent recruitment, training and increase in therapeutic foster homes.	Community Wide



Capital Requests Related to Youth, Education and Child Welfare

Priority	Agency	Request	Explanation	Location
CS	DYCD	Provide, expand, or enhance after school programs for elementary school students (grades K-5)	There is a tremendous need for after school programs for elementary school students grades k-5. At this early stage in the students' lives, it is important to have enriching programs that are both educational and fun. Said programs will also help parents who have limited work hours, will help the children with social skills, and give students an advantage as they progress in their education.	Community Wide
CS	DOE	Provide, expand, or enhance funding for Child Care and Head Start programs	In order to encourage higher education for the adults of CB4, a day care facility should be looked into. It would encourage parents to work on a steady schedule, and possibly further their education.	Community Wide
CS	DYCD	Other youth workforce development requests	Our district would benefit greatly from having a youth center that would ideally to support our youth and families. Educational programs, mentoring, homework help, extracurricular activities, and counseling are just some of the services that the youth within our district are in desperate need of. Seeking funding to obtain land, and construct a center within the confines of our district.	Community Wide
CS	DYCD	Provide, expand, or enhance after school programs for middle school students (grades 6-8)	The low allocation of funds within CB4 is surprisingly low considering SD 24 is currently the most overcrowded in the city. Emphasizing the dire need for after school programming for adolescents grades 6-8 who at this stage in their lives need more aggressive mentoring and help with school work.	Community Wide



Public Safety and Emergency Services

Main Issue Related to Public Safety and Emergency Services

Public safety facilities (precinct, fire houses, etc.)

Since 1988, the Community Board has put the renovation of the 110th Precinct at the very top of its yearly capital requests. For approximately 7 decades, this facility has seen little to no improvements to its overall infrastructure. Both within and outside the facility, structural crumbling, loose bricks, and flooding are common. As one of the busiest precincts in Queens North, with close to 250 uniformed and civilian personnel (and growing), this structure is a potential danger that is unfair to those tasked with keeping our communities safe. Additionally, the community has been requesting a proper parking facility for the 15+ marked and unmarked vehicles being stored along the residential block surrounding the precinct. In a district where parking is at a premium, we should be looking to provide parking for our officers all the while returning parking spaces to the residents of the surrounding community. Years back, in conjunction with Community Board 4, Congressman Crowley (CD14), State Senator Jose Peralta (SD13), and Assemblyman Francisco Moya (AD39) the issue was brought to light, and concerns were forwarded to the attention of the Governor's and Mayor's offices. Additionally, it we are requesting that an NYPD satellite station be installed within the confines of Flushing Meadows Corona Park, a request that the Community Board has supported for many years as well as another satellite on the Western side of Elmhurst near both the Queens Center and Queens Place Malls along Queens Boulevard. We look forward to the continued dialogue, and will be at the forefront with our Elected Officials in full support of the above stated requests.

Community District Needs Related to Policing and Crime

Roosevelt Avenue continues to be a point of contention, and much needed attention. The onslaught of street vendors, rampant crime, and quality of life issues along the commercial corridor are simply getting out of hand. The Community Board receives incessant calls with regards to the conditions of Roosevelt Avenue. We are seeking assistance from our lawmakers to help us find a solution to a growing problem with no clear end in sight. The potential implementation of a task force exclusive to this commercial corridor would be a welcome addition, and one that has been discussed over several conversations, but has made little headway thus far. We look forward to this continued dialogue. Throughout the district of Community Board 4 we have seen a massive increase in the amount of illegally parked cars displaying "for sale" signs on them. While we continue to be at the forefront in bringing these vehicles to the attention of the agencies responsible, there simply isn't enough manpower, and laws are far too lax. Vehicles are being blatantly parked along streets; some with plates, others without, and in many cases those who do have plates only display them in the rear of the vehicle enabling them to use the vehicle's second plate on another one. The majority of these vehicles are being sold by local repair shops who have accepted the low summonses as the norm while they continue to sell the vehicles. The Dept. of Sanitation can 'tag' a vehicle with no plates, but due to the multiple day turnaround time, the vehicle is moved far before enforcement is able to impound it. The low cost of the summonses is simply not enough to deter the sales of these vehicles. In the past year or so, we have seen the implementation of the Neighborhood Coordinating Officer (NCO) Program. While the program is welcome, a general concern is that these officers are usually "held" by local community / civic groups to handle only their specific issues, and are rarely given a chance to work with the rest of the community. CB4 has been working with the NCO's for some time, but while the program began strong, it was ultimately easier to simply reach out to the precinct directly as many of the issues are constituent issues that should be handled on a larger scale (proliferation of homeless, liquor sales to intox, etc.)

Community District Needs Related to Emergency Services

With the increase of population and overdevelopment in CB4Q, all of our emergency services are being taxed. We are concerned that the current level of funding is not adequate for the maintenance/rehabilitation of our firehouses. In addition, we want to make sure that our emergency services providers have all of the equipment that they need in the case of an emergency (i.e. generators in the case of a blackout, better communication equipment to coordinate efforts, etc.). We are also concerned that the existing ERS system is being neglected. In a time when most households no longer have landlines, ERS boxes provide a crucial ability to summon emergency services in situations where very often every second matters. The Community Board is opposed to removal of the existing boxes, and asks that the cast iron bases be retained and retrofitted to accommodate the more modern push button system onto the existing base.



Public Safety and Emergency Services

Capital Requests Related to Public Safety and Emergency Services

Priority	Agency	Request	Explanation	Location
2/40	NYPD	Renovate or upgrade existing precinct houses	The building now housing the 110 Precinct is inadequate. The precinct House is in a densely populated residential area with limited street access and no viable parking for police vehicles. This project was projected for site selection in FY 2013. We are looking to move funding and site selection forward. Renovation to this facility is desperately needed. CB #4Q will continue to support this project until complete.	110th Precinct 94-41 43rd Avenue
8/40	NYPD	Provide surveillance cameras	Several sectors within the district are in need of added security measures, specifically the corners spanning the entire stretch of Roosevelt Avenue, the adjoining Junction Boulevard, and a high-crime section of 57th Avenue between 99th Street and Junction Blvd. Requesting that surveillance cameras be considered.	Community Wide
12/40	FDNY	Rehabilitate or renovate existing fire houses or EMS stations	Continue funding for complete analyzation, and reparation of firehouses within the district. Engine 287 Ladder 136 Battalion 46 86-53 Grand Avenue Elmhurst, NY 11373	Community Wide
13/40	NYPD	Add NYPD parking facilities	For years, Community Board #4Q has requested dedicated vehicle parking for the 110 Precinct vehicles. Currently no off street parking is available for NYPD vehicles.	110th Precinct
33/40	NYPD	Provide a new NYPD facility, such as a new precinct house or sub-precinct	Requesting that an NYPD satellite station be installed within the confines of Flushing Meadows Corona Park to provide safety in this heavily used large park.	Flushing Meadows Corona Park
37/40	NYPD	Provide a new NYPD facility, such as a new precinct house or sub-precinct	Requesting that a satellite precinct be considered to the western side of Elmhurst, specifically the areas around the Queens Place, and Queens Center Malls.	



Public Safety and Emergency Services

Expense Requests Related to Public Safety and Emergency Services

Priority	Agency	Request	Explanation	Location
6/25	FDNY	Upgrade communication equipment to improve emergency response	Requesting that existing ERS boxes throughout the district retain their cast iron bases, and be retrofitted with the more modern "push button" system vs. complete replacement. These boxes have a direct intercom link to both Fire and Police Dispatchers, and as such should be wired to existing electrical poles to keep them functioning.	Community Wide
9/25	NYPD	Provide additional patrol cars and other vehicles	Requesting 2 to 3 unmarked vehicles to meet current and future needs.	110th Precinct
11/25	FDNY	Expand funding for fire prevention and life safety initiatives	The FDNY Fire Safety Educational Unit needs additional funding to provide smoke detectors and carbon monoxide detectors for distribution to the public. This is a public service that will save lives.	Community Wide
19/25	FDNY	Other FDNY facilities and equipment requests	The majority of the firehouses within our district already have generators in case of a power outage. However, Engine 289 in Corona is still operating with an above ground, multiple unit setup. Requesting funding to provide an in ground generator for this heavily utilized station.	Engine 289 97-28 43rd Avenue



Main Issue Related to Core Infrastructure, City Services and Resiliency

Recycling facilities and services

Throughout the district, our constituency has seen an increase in the amount of garbage being strewn throughout our streets. Abandoned lots covered in garbage are common ground, and home owners and businesses alike tend to overlook laws regarding the cleanliness of their sidewalks. Changes to recycling laws are constant, and new programs such as electronic/textile/compost are confusing and present a change that many of our constituents have not yet grasped. Informational campaigns in multiple languages for public education on recycling, and responsibilities of property owners are a constant request heard throughout our constituency. It has also been noted that DSNY enforcement tends to be lax in some cases, and overly aggressive in others due mostly to the fact that several agents have openly stated that they themselves do not know the actual laws. Dialogue between DEP, and DSNY Enforcement must be made crystal clear to form a more cohesive plan to keep our streets clean. Funding and emphasis should be put into public informational campaigns designed to educate our constituents. These campaigns should be in multiple languages, and be a year round effort to be most effective, and not only at the inception of these programs. .

Community District Needs Related to Water, Sewers and Environmental Protection

Several corridors along CB4Q are in need of upgrades to their sewers. Basements along the commercial district of 82nd Street between Roosevelt Avenue and Baxter Avenue as well as homes along the South side of 111th Street suffer from sewer backups, and ponding issues along their streets. A general upgrade of our infrastructure should take precedence to meet current and future demand. More over, we have been undergoing an issue with the recently implemented rain garden initiative brought forth by the Dept. of Environmental Protection. When the rain garden program was unveiled in the district in 2013, it was received with trepidation as concerns were immediately brought up with regards to the accountability of rain garden maintenance. While the Community Board was in favor of the overall concept behind them, we feared that these rain gardens would quickly become garbage pits. DEP does its best to rectify the issue, but rain gardens throughout the district can go months with no cleanup on behalf of the agency. Staffing is simply not enough. A general increase to staffing specifically towards the maintenance of the gardens would be of huge benefit to our community.

Community District Needs Related to Sanitation Services

NYC has suffered from several snow storms over the last few years, and while DSNY did its best to work with existing resources, ultimately a lack of manpower, and vehicle egress made snow removal a difficulty. Damaged snow plows, and detached mechanical brooms have been reported by our constituency. We ask that budget increases reflect the increase in housing units in the CB#4Q area. Additional vehicles as well as increased maintenance on the existing ones should be more aggressively pursued. We are also seeking a more proactive campaign be implemented to educate our residents on the laws and rules for recycling. Too many residents in CB#4Q do not understand the constantly changing rules and regulations of recycling and property maintenance, specifically with regards to electronic recycling, textile recycling, composting and rain gardens.



Capital Requests Related to Core Infrastructure, City Services and Resiliency

Priority	Agency	Request	Explanation	Location
3/40	DEP	Inspect storm sewer on specific street segment and service, repair or replace as needed	Reconstruction and Upgrade of Existing Sewer System to Accommodate Existing and Future Needs. Queens Boulevard--from the Long Island Expressway to the CSX railroad line.	Community Wide
11/40	DEP	Inspect storm sewer on specific street segment and service, repair or replace as needed	Reconstruction and Upgrade of Existing Sewer System. 111th Street from Corona Avenue to Roosevelt Avenue.	Community Wide
CS	DSNY	Provide more frequent organics/recycling collection service for schools and institutions	We are looking for funding to help and support organics pickups in schools. Currently, the organics collection can be seen primarily within QW05, but many of our schools don't participate in the program	Community Wide
CS	DEP	Evaluate a public location or property for green infrastructure, e.g. rain gardens, stormwater greenstreets, green playgrounds	Requesting more staffing for the maintenance of the recently implemented Green Infrastructure initiative. Currently DEP staff is scheduled to maintain and clean these sites on a weekly basis, but a majority of our sites go for weeks, possibly months with no visits. Additionally, CB4Q has reported several cases in which homeowners receive summonses for garbage in these bioswales. Current staffing is simply not enough. Requesting funding to meet current and future demand.	Community Wide
CS	DEP	Inspect storm sewer on specific street segment and service, repair or replace as needed	The triangle area located at Broadway, 76th Street, and 41st Avenue constantly floods at the crosswalk curb cuts. Standing water is always present. Install catch basins in this area to reduce flooding.	Broadway 76th Street 41st Avenue
CS	DEP	Inspect storm sewer on specific street segment and service, repair or replace as needed	Reconstruction and Upgrade of Sewer System. Junction Boulevard from the Long Island Expressway to Roosevelt Avenue. 57th Avenue from Queens Boulevard to 99th Street. Horace Harding Expressway from 108th Street to Queens Boulevard.	Community Wide
CS	DEP	Evaluate a public location or property for green infrastructure, e.g. rain gardens, stormwater greenstreets, green playgrounds	85th Street abuts MTA /LIRR property. Green infrastructure is sorely needed in this area. DEP has already conducted studies to consider this location for green infrastructure, and has in fact identified it as a potential site. Seeking implementation and completion of this long awaited / approved project.	85 Street 55th Road 57th Road



Expense Requests Related to Core Infrastructure, City Services and Resiliency

Priority	Agency	Request	Explanation	Location
8/25	DSNY	Increase enforcement of illegal posting laws	Several commercial corridors and their surrounding areas are infamous for illegal postings on utility poles, walls, and construction fences. The entire stretch of Roosevelt Avenue from 72nd Street to 114th Street and its adjacent side streets are havens for these postings. Business owners do their best to remove these flyers, but with zero enforcement, it is a losing and discouraging battle. Funding is being requested to bring enforcement to our district.	Roosevelt Ave 72nd St 114th St
17/25	DSNY	Increase enforcement of dirty sidewalk/dirty area/failure to clean area laws	Several areas of our district are seeing a substantial amount of garbage pile up, with little to no penalty to the property owners. Commercial corridors such as Queens Boulevard, Roosevelt Avenue, Junction Boulevard, Broadway, and National Street near Corona Plaza are infamously known for excessive littering, but enforcement is scarce. Inspectors have often been witnessed turning a blind eye to several establishments. The quality of life of our small businesses along these specific corridors are in need of a more cohesive campaign to clean up our streets.	Community Wide



Main Issue Related to Housing, Economic Development and Land Use

Real estate development (development trends)

It is a fact that the infrastructure of CB #4Q was built mainly for low-density housing. The addition of larger housing units at double and in some cases triple the size of the preexisting structure places an undue strain on our infrastructure. Such over-development without proper planning affects CB4Q and its residents on all facets. The Dept. of Sanitation is overwhelmed with the increase in trash generated by the larger units; Police and Fire department response times are up due to the increase in traffic clogging our roads, already overused schools and hospitals are stretched beyond capacity, and reports of flooding and sewer backups are at an all-time high.

Community District Needs Related to Land Use

Community Board #4Q is requesting that The Department of City Planning evaluate the current zoning in CB#4Q. We are requesting that residential areas in need of contextual rezoning and areas where affordable housing can be built be identified. New zoning regulations must include additional off-street parking provisions for each unit built. On the note of overcrowding and over-development is the commercial corridor along Queens Boulevard. Existing commercial one story buildings are being replaced with high density buildings at a rate too fast to be kept up with. A planned balance between residential and commercial buildings along the boulevard is necessary so Queens Boulevard does not continue to be a boulevard of haphazardly placed buildings. For far too long, we have operated under the careless mentality of “when it is needed, we’ll deal with it.” The intricacies behind infrastructural projects combined with lack of funding and staffing has led our agencies to operate with little to no time to actually handle issues on a proactive basis. Community services and utility companies are increasing their services as the need arises, and not before. The fact is that large sections of Elmhurst and Corona were designed as a tightly woven network of 1-2 family houses whose streets are far too narrow, and simply not prepared to handle such an influx of tourism in such a short amount of time. With 75% of the district’s make up being residential, it is evident that people want to live here. What is a constant problem for us however, is the misconception that in order to solve the problem, more housing should be created. Throughout the year, variances are constantly being brought to Community Boards for review thus converting 2 and 3 family homes into multi dwellings of 15 or more families. The growth is blatantly evident, yet very little emphasis is being put on into actual upgrades to our streets or sewer systems. With the average median household income at \$45,661, and 27% of the district’s households living below the poverty line, there should be more conversation and initiatives geared towards not only providing affordable housing, but in also taking into consideration that housing initiatives require substantial infrastructural changes especially in neighborhoods such as Corona and Elmhurst that have seen a tremendous surge in population within the last 5-10 years.

Community District Needs Related to Housing Needs and Programming

The lack of NYCHA housing within our district is a cause for concern. With the average median household income at \$45,661, and 27% of the district’s households living below the poverty line, there should be more conversation and initiatives geared towards providing affordable housing. Careful consideration must be made into the locations of such developments as substantial infrastructural upgrades are often needed. The neighborhoods of Corona and Elmhurst already suffer from lack of parking, and have seen substantial increases in traffic. While we have a tremendous need for such facilities, the inherent inconvenience of putting them wherever possible can be more detrimental than helpful. We support open dialogue in the obtaining of land, and eventual construction of such a facility within our district.



Community District Needs Related to Economic Development

The eclectic nature of Elmhurst and Corona combined with the astronomical prices on rent for ‘brick and mortar’ establishments has led Community Board 4 to be a mecca for street vendors. The sheer amount of nationalities, cultures and craftsmen within the district have encouraged those seeking employment to establish themselves as successful street vendors. The concern however, is over the high amount of vendors that flood areas where commercial traffic is extremely high, and the negative impact this can have on brick and mortar businesses. Laws are in effect that help to govern the distance between street vendors and physical establishments selling similar wares, but complaints to agencies, and fights between vendors are far too numerous to log. While it is universally understood that street vendors are in fact a legitimate tax paying business, there should be an understanding that inspections of vendors (food or otherwise) be far more stringent. Furthermore, enforcement should be conducted more often in heavily utilized commercial corridors that have been overrun by street vendors such as Corona Plaza, Roosevelt Avenue, Junction Boulevard, the Queens Center Mall, and the area within the purview of the 82nd Street Business Improvement District (82nd Street Partnership) which spans 82nd Street from 37th Avenue to Baxter Avenue.



Capital Requests Related to Housing, Economic Development and Land Use

Priority	Agency	Request	Explanation	Location
14/40	HPD	Provide more housing for extremely low and low income households	Community Board 4 has seen a very steady influx of new residents in the last few years, and will only continue to grow at a steady pace. The lack of affordable housing is encouraging "shacking up" in which large families are living out of single rooms and illegally converted basements. An Affordable Housing facility is desperately needed for both the convenience, and the safety of CB4's residents.	Community Wide
22/40	HPD	Provide more housing for medium income households	Community Board 4 has seen a very steady influx of new residents in the last few years, and will only continue to grow at a steady pace. An emphasis throughout the district is being put into low income housing, however, financial burden does not pertain strictly to low income households. Requesting funding to survey, obtain land, and eventually build an affordable housing facility for medium range income within the district.	Community Wide
27/40	HPD	Other affordable housing programs requests	While the Department of Housing Preservation and Development (HPD) provide loan programs the increased need for such programs can not be overlooked. Community Based Organizations (CBO's) such as Neighborhood Housing Services (NHS), do a great job in providing such services, but the demand for increased programs is exceedingly present specifically in low density (2-3 family) homes.	Community Wide
31/40	HPD	Provide more housing for special needs households, such as seniors, or the formerly homeless	With the homeless crisis sweeping throughout the city, many communities have been seeing an increase in the number of shelters popping up within their constituencies. As these shelters continue to increase, to avoid the homeless crisis remaining stagnant it is important housing for formerly homeless as well as seniors be provided.	Community Wide
35/40	DOB	Assign additional building inspectors (including expanding training programs)	With an emphasis on overdevelopment within our community, building inspectors have backlogs that can span months. Funding is being requested to improve and expand the inspector training program. More so, the inherent dangers with illegal conversions is a major concern. An increase in building inspectors with an emphasis on better training (obtaining of warrants, etc.) would be a tremendous help to accommodate current and future needs. Priority should be specifically given towards safety requirements and proper construction practices.	Community Wide



Expense Requests Related to Housing, Economic Development and Land Use

Priority	Agency	Request	Explanation	Location
1/25	DCP	Study land use and zoning to better match current use or future neighborhood needs	CB4Q is experiencing overdevelopment at an alarming rate. Existing one and two family homes are demolished and replaced with high density buildings that are out of character with the surrounding neighborhood. The existing infrastructure was built mainly for low density housing and the additional units place an undue strain on our fragile infrastructure. Requesting that DCP evaluate the current zoning in CB4Q taking into account the current state of our infrastructure, and identify areas where zoning changes would improve the quality of life for our constituency.	Community Wide
3/25	EDC	Expand graffiti removal services on private sites	The ongoing problem of graffiti plaguing our district continues to grow. While several initiatives (Forever Graffiti Free, NYPD, DSNY) have been effective, more funding to provide more materials to agencies, local civic organizations and community groups would be a huge benefit to our district.	Community Wide
12/25	HPD	Expand tenant protection programs	Tenant protection services are designed to preserve affordable housing by detecting and curtailing patterns and practices of landlord fraud. With the dramatic growth seen within CB4 our constituency is in need of extensive services that would help them to preserve their quality of life. Funding is being requested for expansion of these programs.	Community Wide
15/25	SBS	Support BID Feasibility Analysis or Formation Planning	CBQ currently has a small BID stretching from Roosevelt Avenue to Baxter Avenue, however other sectors throughout the district would benefit from this initiative. The community of Elmhurst, an up-incoming commercial mecca would greatly benefit from a potential BID, specifically along the corridor of Broadway from Queens Boulevard to Baxter Avenue.	Community Wide
20/25	SBS	Support BID Feasibility Analysis or Formation Planning	Community Board 4's only BID is grossly understaffed taking into account its catchment area, and its growth potential. Requesting that funds be allocated to increase the staffing for this BID in the heart of Jackson Heights and Elmhurst.	82nd Street Partnership 37-06 82nd Street



Transportation

Main Issue Related to Transportation

Traffic congestion

The maintenance of our roads has become an ongoing issue that is exacerbated by the influx of vehicles seen throughout our streets as of late. Snow mitigation practices after snowstorms tear our already crumbling streets and curbs apart. An increase in staffing for surveying, and eventual repairing of long, heavily used stretches of road would be an asset to our communities. Narrow roads along residential streets combined with decaying infrastructure is a recipe for disaster, specifically along high usage corridors that serve as the only means into our communities. We are specifically concerned with the excessively used Vision Zero high priority stretch of road along Junction Boulevard from Roosevelt Avenue to the Horace Harding Expressway. This avenue is in dire need of infrastructural economic, and roadway upgrades. We will continue to support the NYCDOT in helping to identify high priority corridors such as this on a proactive basis, and not after the fact.

Community District Needs Related to Traffic and Transportation Infrastructure

Due to the recent uptick of public events within the district, specifically around Flushing Meadows Corona Park, the department has put substantial resources into traffic mitigation and constituent safety. Implementation of the long awaited Queens Boulevard Traffic Safety plan has begun, and Broadway from Queens Boulevard into Jackson Heights will soon see traffic and safety improvements along the corridor. In conjunction with these improvements and Vision Zero, fatalities and injuries for pedestrians, cyclists, and motorists alike will likely continue to dwindle. Community Board 4 however has expressed concern over the potential proliferation of bike lanes throughout the district, specifically in corridors where vehicles and cyclists have never shared roads. While it is universally understood that our streets should be safe for all, the specifics on how bike lanes are supposed to be properly used is still unclear to many of our constituents. Cyclists and motorists alike actively ignore rules of the road, i.e.: helmets are rarely worn, cell phones are actively used, and motorized vehicles (i.e. motorcycles, scooters) feel that they can freely use bike lanes as a means of travel. While NYC's Vision Zero campaign has proactively initiated substantial educational community outreach, lawmakers should now work on a campaign geared towards holding cyclists accountable for the laws governing bicycles within the district through education. While good for revenue on a small scale, an increase in cyclist summonses since Vision Zero's inception simply just states that cyclists themselves may not even know the laws, or worse, feel like they are above them. The solution is not simply about more summonses or lanes, but about more education for cyclists and motorists alike. The Vision Zero initiative at its most basic level should be more aggressively phased into our Elementary, Junior and High School curriculum.

Community District Needs Related to Transit Services

Within Community Board 4, we have access to the 7 line, and several high-volume stations for both buses and trains. However high demand is quickly overcrowding our transportation infrastructure. The Queens Center Mall specifically is seeing an enormous amount of growth which local stations and bus routes simply cannot sustain. Funding should be allocated for an increase in service, station surveys, and potential re-routes to buses specifically along the commercial corridors surrounding the Queens Center and Queens Place Malls.



Transportation

Capital Requests Related to Transportation

Priority	Agency	Request	Explanation	Location
4/40	DOT	Repair or construct new curbs or pedestrian ramps	Capital funding is being requested to continue with the substantial amount of damaged curbs throughout the district. Requesting an increase in funding to the NYCDOT curb replacement program/unit.	Community Wide
16/40	DOT	Reconstruct streets	Reconstruction of streets in the surrounding area of 41st Avenue and Roosevelt Avenue	41st Avenue Roosevelt Avenue
19/40	DOT	Roadway maintenance (i.e. pothole repair, resurfacing, trench restoration, etc.)	This stretch of road adjacent to a major highway (Grand Central Parkway) is in dire need of a reconstruction. Curb replacement/creation should be a priority. Coordination and conversation with State DOT should be looked into.	114th St 43rd Av Roosevelt Av
23/40	DOT	Reconstruct streets	A complete reconstruction of this very heavily utilized corridor from Roosevelt Avenue to the Horace Harding Expressway should be looked into. Curb cuts, traffic mitigation plans, street resurfacing, and curb replacements are all sorely needed to meet current and future demand.	Junciont Blvd Roosevelt Av Horace Harding Expwy
25/40	DOT	Install streetscape improvements	Requesting streetscape improvements to aid in the beautification of commercial corridors throughout the district specifically Junction Blvd. bet Roosevelt Ave. & 43rd Ave. and 82nd Street bet. Roosevelt Ave. & Baxter Ave. While the 82nd Street BID does in fact maintain the latter section, improvements to lighting, flood mitigation, benches, planters etc. would be a welcome addition to both sections of road in the hopes that local businesses would benefit from the beautification.	Community Wide
CS	DOT	Roadway maintenance (i.e. pothole repair, resurfacing, trench restoration, etc.)	The streets within this area (Grand Avenue 57th Avenue, Queens Boulevard) are in great disrepair and many have no viable curbs or no curbs at all.	57th Ave Grand Avenue, LIRR Queens Blvd
CS	DOT	Upgrade or create new plazas	Renovation of Corona Plaza Funding has been allocated by CM Ferreras of CD21. *Continued Support	Corona Plaza
CS	DOT	Repair or construct new curbs or pedestrian ramps	Some center island malls on 111th Street were completely renovated, but the remaining malls are in need of a complete overhaul. The curbs should be raised as part of the reconstruction so that illegal parking can be discouraged, and trees and shrubbery should be planted to better the quality of life for residents facing the malls.	111th St Sautell Ave 43rd Ave



Transportation

Capital Requests Related to Transportation

Priority	Agency	Request	Explanation	Location
CS	NYCTA	Improve accessibility of transit infrastructure, by providing elevators, escalators, etc.	Comprehensive study should be conducted towards upgrades and handicap accessibility to these very heavily utilized stations. Grand Avenue, Woodhaven Blvd. Elmhurst Avenue.	Community Wide
CS	NYCTA	Repair or upgrade subway stations or other transit infrastructure	Reopen a Train Station on Broadway in Queens for the MTA LIRR Due to heavy public transportation demands CB #4Q is requesting the reopening of a train station on the MTA LIRR Port Washington Line on Broadway in Queens.	Former Broadway LIRR Station Broadway and Whitney Avenue

Expense Requests Related to Transportation

Priority	Agency	Request	Explanation	Location
5/25	DOT	Other transportation infrastructure requests	Increase and maintain funding for the curb and sidewalk replacement program.	Community Wide
7/25	DOT	Other transportation infrastructure requests	The rapid increase in population within CB4Q has left several requests for repairs pending for far longer than they should be. Requesting an increase in staff for roadway maintenance (pothole and reconstruction crews). Additionally requesting an increase in staffing for replacement of missing/damaged signs (traffic device maintainers)	Community Wide
18/25	DOT	Other transportation infrastructure requests	Requesting surveying and studies to consider infrastructural improvements (additional lighting, signage and street maintenance/curb replacement/repair) to this dark stretch of road in the backstreets of Elmhurst which was recently approved by DEP for Green Infrastructural upgrades.	85th St 55th Ave 57th Ave



Parks, Cultural and other Community Facilities

Main Issue Related to Parks, Cultural and other Community Facilities

Quality of parks and park facilities

One of the more pressing issues that CB4Q faces on a day to day basis is the loss and/or lack of valuable green space. While we encourage and welcome the attention and tourism, we cannot forget that local residents, both elderly and young should be entitled to an escape in the form of green space. While we do have a number of parks within our district, many of them need to be re-sodded/ replaced with synthetic turf, have play equipment in dire need of repair/upgrade, or need to be redesigned to accurately reflect their usage and the needs of the community. As the number of Americans suffering from obesity steadily rises, it is important that the residents of CB4Q have safe, modern and fun places to go to get exercise and stay healthy. The rampant smoking and gambling within our parks is an ongoing issue that is sadly not being properly addressed by the responsible agencies. Informational campaigns to discourage such behavior with proper enforcement (PEP, CBO's, Task Forces, NYPD/ NCO's) to back it would be of a great benefit to our District.

Community District Needs Related to Parks and Recreational Facilities and Programming

Our parks are also cultural spaces, a fact that is often forgotten. With Queens Parks ratings as high as they are, we should be looking to encourage visitors and tourists to enjoy our public spaces to their full capacity. Future parks schematics/ designs should all have some form of performance space base lined into their designs since their inception. Such spaces would help to tackle health issues and promote wellness via programs such as ShapeUpNYC. Public performances would also increase, as such spaces would better accommodate and essentially promote more holiday ceremonies throughout the district celebrating the multitudes of ethnic groups that make up our district.

Community District Needs Related to Cultural and other Community Facilities and Programming

The rich history surrounding CB4 is fascinating, and should be recognized as such. Several parks with significant historical meaning often have their history forgotten due to lack of properly displayed information. With the increase in development geared towards promoting tourism specifically around Elmhurst, historical facts can easily be forgotten. At the very least, proper signage should be implemented at key locations (parks, cemeteries) throughout the district as is done in rural Pennsylvania towns. Emphasis should be put into the multitude of parks scattered throughout our Board as a starting point as these parks are often historical pillars that tell stories of Elmhurst, Newtown and Corona. Furthermore, applications for land marks are often overlooked, and denied, a practice that will only serve to further hide the rich past that makes up CB4.

Supporting Materials:

The Community Board has provided the following supporting materials which can be accessed by clicking on the link(s) below or by copying and pasting the link(s) found in the Appendix into a browser.

[LPC-Old St. James Ep. Church](#)

Community District Needs Related to Library Facilities and Programming

With the amount of new schools and pre kindergartens within our district, we feel that the need for a library within the confines of South Corona would be a very welcome addition to the local community. While the Corona and Lefrak branches have seen recent upgrades, the community at large would like a branch within the vicinity of PS14, the HS of Arts and Business, and several newly proposed pre k facilities all within the South Corona area.



Community District Needs Related to Community Boards

Community Boards are widely considered to be the City's front line of defense, facing countless constituent issues, zoning variances, and public meetings. Staffing for many CB's is however often inadequate for the amount of work output by these agencies, causing many of them to resort to interns as a primary source of help. Budget constraints have led many boards to maintain a maximum of 2-3 staff members, usually with only one full timer. An increase in funding is sorely needed to increase current staffing.



Parks, Cultural and other Community Facilities

Capital Requests Related to Parks, Cultural and other Community Facilities

Priority	Agency	Request	Explanation	Location
1/40	QL	Create a new, or renovate or upgrade an existing public library	The population of Community Board 4Q is growing daily. Although the Elmhurst Library branch is under renovation for an expansion, both this branch and the Lefrak City Library will continue to be heavily utilized. A new reference library in the vicinity of 108th Street and Corona Avenue will help service the south east portion of CB4Q which is currently lacking library services.	Corona Avenue 108th Street
10/40	DPR	Reconstruct or upgrade a park or amenity (i.e. playground, outdoor athletic field)	At just over 3 acres, and located at the northernmost border of Community Board 4, Park of the Americas is in need of refurbishing. The very pressing issue of intoxicated visitors within the park has gotten out of hand. Measures should be taken to discourage such activity. Security measures (benches, led lighting, security cameras, etc.) are all very welcome additions to this park that is located directly across from an elementary school. While we understand that funding has already been allocated to a portion of the park, we are requesting funding to complete second portion of renovations.	Park of the Americas
15/40	DPR	Reconstruct or upgrade a park or amenity (i.e. playground, outdoor athletic field)	Requesting funding be allocated for the renovation of Triangle 90 (90th Street and Roosevelt Avenue) and Answer Triangle (94th Street and Roosevelt Avenue). These two small parks within very close proximity to each other could essentially be funded as a package deal. The commercial corridor of Roosevelt is in need of several infrastructural upgrades, so a superficial renovation to these two key parks along the corridor would be a welcome addition and an asset to local businesses and residents.(There has been interest from CBOs and local businesses to help out) (Attached photos)	Triangle 90 90th St and Roosevelt Ave
17/40	DPR	Reconstruct or upgrade a park or amenity (i.e. playground, outdoor athletic field)	The reflecting pools near the Unisphere in Flushing Meadows Corona Park (FMCP) have been improperly/barely used over the last few years. We are elated to know that recent funding has allowed for a partial renovation of these pools, However, additional funding is being requested to help with phase 2 of the adaptive renovation for Fountain of the Fairs and reflecting pools at FMCP.	Flushing Meadows Corona Park



Parks, Cultural and other Community Facilities

Capital Requests Related to Parks, Cultural and other Community Facilities

Priority	Agency	Request	Explanation	Location
18/40	DPR	Reconstruct or upgrade a building in a park	With the substantial influx of events within this small park, renovations would be a welcome and much needed addition. The beautification of the front entrance, repainting of overhead steel beams, and implementation of security cameras throughout the grounds are all necessary upgrades to meet current and future use.	Playground for All Children
24/40	DPR	New equipment for maintenance	Requesting funding for parks maintenance vehicles: 4x4 crew cab, salt spreader, and powerlift gate (Ford-F 250) 4x4 single cab pick up with plow, powerlift gate, and "dumperdog" attachment	Community Wide
26/40	DPR	Reconstruct or upgrade a park or amenity (i.e. playground, outdoor athletic field)	Middleburgh Triangle is a small triangle located at the intersection of Corona Avenue, 90th Street and 48th Avenue. The small triangle even though maintained is a key historical location that would benefit from minor infrastructural upgrades. Benches for the bus stop, additional shrubbery, and historical signs emphasizing the neighborhood change from Middleburgh to Hastings to Newtown to present day Elmhurst should be emphasized as they showcase the rich history of our community. Additionally, Horse brook, Aske and Libra Triangles are all sites which tell a story of the rich history of our community. At the very least these facts should be included as part of the redesign of these small parks which should include benches, plantings/beautification, and historical facts via proper signage.	Middleburgh Triangle 90th Street 48th avenue and Corona Avenue
28/40	DPR	Reconstruct or upgrade a park or amenity (i.e. playground, outdoor athletic field)	Residents of the Elmhurst community have been jogging along the outdoor perimeter of Newtown Field (92nd Street and 57 Avenue) for years as no official track exists within the area. However, a mere 2 blocks away, and sitting directly on the border of CB4, is Hoffman Park, a heavily utilized 3 acre park in need of renovation. In our opinion, this is a prime location for a proper jogging track. Ideally, funding can also be used to alleviate the prominent floor cracks that can be seen throughout the basketball, handball, and baseball fields. Implementation of a dog run would be a benefit to the local community as minimal space exists for this. (plan submission) (petition/ signatures on file)	Hoffman Park
30/40	OMB	Provide more community board staff	Community Boards are generally understaffed. An increase in funding is sorely needed to maintain current staffing as well as new hiring.	Community Board 4Q 46-11 104 Street



Parks, Cultural and other Community Facilities

Capital Requests Related to Parks, Cultural and other Community Facilities

Priority	Agency	Request	Explanation	Location
32/40	DPR	Reconstruct or upgrade a building in a park	Over the past few years, new synthetic soccer fields were constructed within Flushing Meadows Corona Park, but not all were completed. Funding is being requested to complete the construction of the remaining synthetic soccer fields.	Flushing Meadows Corona Park
36/40	DPR	Forestry services, including street tree maintenance	The segment of Queens Boulevard from 90th Street to 77th Street is in need of tree maintenance/ pruning as the majority of trees along this stretch of road are dead and/or dying. In conjunction with the Queens Boulevard Safety Program in which bike lanes were implemented along this boulevard, the added benefit from a decrease in the carbon foot prints along the corridor would be a huge asset to the bike riders, and pedestrians alike. Funding is being requested to look into the maintenance of trees along the boulevard. Additionally, trees surrounding Newtown Field (57 Ave and 92 Street) are in dire shape. This same initiative should be extended to this stretch of road adjacent to Queens Boulevard.	Queens Boulevard 90th Street 77th Street
CS	QL	Create a new, or renovate or upgrade an existing public library	Renovation of Elmhurst Library. **Continued Support	Elmhurst Library
CS	DPR	Reconstruct or upgrade a park or amenity (i.e. playground, outdoor athletic field)	We must decide whether this should be a passive or active park. On any given morning, tai-chi practitioners can be seen using this park religiously between the hours of 7 and 10am. Upon release of the many schools within walking distance however, the dynamics of this park change. A better means of egress to access the comfort station(s) should be considered during design. in light of historical findings, special attention should be paid to the amount of active use within the park. Historical placard should also be added .	Newtown Playground



Parks, Cultural and other Community Facilities

Capital Requests Related to Parks, Cultural and other Community Facilities

Priority	Agency	Request	Explanation	Location
CS	DPR	Reconstruct or upgrade a park or amenity (i.e. playground, outdoor athletic field)	William F. Moore Park is a heavily utilized small park in the heart of Corona. The park adjacent to the famous Parkside Restaurant and the Lemon Ice King of Corona is in need of renovation. Improvements to the existing flag pole, additional shrubbery/plantings, and overall infrastructural improvements would be a welcome addition to the surrounding community. Upgrades to the bocce ball court would be a welcome addition as well as proper drainage for the residual clay from the court that can be seen all throughout the park and its surrounding sidewalk(s). The addition of a performing stage/ platform would be a welcome addition as this parks sees regular programming I.e: Given the proximity to the home of Louis Armstrong, it would make sense that such history be showcased.	William F. Moore Park 107-06 Corona Avenue
CS	DPR	Reconstruct or upgrade a park or amenity (i.e. playground, outdoor athletic field)	CC Moore Playground is a heavily utilized playground. The design is obsolete. Redesign requested to meet the needs of the current park users. Issues with smoking, gambling, gang activity, rundown bathroom facilities, homeless, etc.	CC Moore Playground
CS	DPR	Reconstruct or upgrade a park or amenity (i.e. playground, outdoor athletic field)	Continuing support in favor of "friends of" groups is encouraged. performances, pyhblic asafety/anti smoking	Louis Simeone Park



Parks, Cultural and other Community Facilities

Expense Requests Related to Parks, Cultural and other Community Facilities

Priority	Agency	Request	Explanation	Location
2/25	DPR	Forestry services, including street tree maintenance	There is a backlog of requests for tree pruning. The current pruning cycle is far too long. Funding is needed to shorten this cycle, and to restore pruner and climber positions to the DPR. A shorter year pruning cycle will produce stronger, healthier, and better looking trees. A strong maintenance program is needed to care for existing trees and for the continuation of the million additional trees that are to be planted in NYC.	Community Wide
4/25	DPR	Forestry services, including street tree maintenance	Trees are a vital component of our environment. Homeowners affected by tree roots lifting sidewalks should not have to wait years before repairs are completed. Although funding has increased in the past, an additional increase in FY 2020 is requested to help complete the existing backlog of requests.	Community Wide
10/25	DPR	Provide better park maintenance	The large amount of parks within the district combined with the lack of proper personnel to maintain them continues to be a problem throughout the district. Requesting additional parks maintenance personnel, Parks Enforcement Police (PEP), foresters to meet current and future needs. Police barricades throughout the park as well as the closure of the Queens Museum of Art (QMA) during key events is a deterrent, and not a welcome to park goers.	Community Wide
16/25	QL	Extend library hours or expand and enhance library programs	Community Board #4Q's catchment area of Corona, Corona Heights, and Elmhurst is densely populated with a wide variety of ethnic groups comprised of children, adults, and senior citizens. Our library branches and programs the libraries provide are heavily utilized. We will continue to support six day service, look to support 7 day service when applicable.	Community Wide
21/25	DCLA	Provide more public art	Public art serves as a means to deter graffiti within our parks. More funding should be allocated to grants specifically geared towards public art. Funding should effectively cover both initial implementation as well as continued maintenance of projects for consecutive years.	Community Wide

6. Additional Information and Other Budget Requests

Other Capital Requests

Priority	Agency	Request	Explanation	Location
9/40	DPR	Fund an Existing Community Garden	Requesting improvements to this heavily supported community garden. Gardening equipment, fencing, better lighting, and improved paths are just a few of the improvements being requested by the community.	Corona Tax Payers' Garden Radcliff Ave and 102nd St
34/40	DPR	Improvements to an Existing Community Garden	This garden, strongly supported by CB4Q has opened its doors to several community events and is the pride and joy of those who live near it. Requesting improvements to the surrounding sidewalk, fence, lighting, and pedestrian paths within the garden.	Sparrow's Nest Community Garden 54-01 101st Street
CS	LPC	Renovate or upgrade an existing cultural facility	The Old Saint James Episcopal Church is due for exterior and interior restoration and maintenance. The NY Landmarks Conservancy is willing to help again and an assessment would be needed for guidance in restoration work, including repainting and restoring of wood shingled siding, replacement of window facing 51st Ave, necessary updates of interior, sprucing up of side yard with use of remaining slate and stones in the garden to keep character, and installation of historical signage. Also, the need for recognition and restoration of the ancient cemetery around The Reformed Church of Newtown is crucial to protecting the character and history of Elmhurst. Signage honoring the church's and graveyard's history is needed, as well as fencing to protect the open area of the graveyard.	Old St. James & Ref. Newtown Ch

7. Summary of Prioritized Budget Requests

Queens Community Board 4 Capital Requests

Queens Community Board 4 submitted 40 capital budget requests, organized by priority.

Priority /

Continued

Support (CS)	Agency	Request	Explanation	Location	Supporters
1/40	QL	Create a new, or renovate or upgrade an existing public library	The population of Community Board 4Q is growing daily. Although the Elmhurst Library branch is under renovation for an expansion, both this branch and the Lefrak City Library will continue to be heavily utilized. A new reference library in the vicinity of 108th Street and Corona Avenue will help service the south east portion of CB4Q which is currently lacking library services.	Corona Avenue 108th Street	
2/40	NYPD	Renovate or upgrade existing precinct houses	The building now housing the 110 Precinct is inadequate. The precinct House is in a densely populated residential area with limited street access and no viable parking for police vehicles. This project was projected for site selection in FY 2013. We are looking to move funding and site selection forward. Renovation to this facility is desperately needed. CB #4Q will continue to support this project until complete.	110th Precinct 94-41 43rd Avenue	Senator Jose Peralta SD 13 Assembly Man Francisco Moya AD 39; Rep. Joseph Crowley 14th District
3/40	DEP	Inspect storm sewer on specific street segment and service, repair or replace as needed	Reconstruction and Upgrade of Existing Sewer System to Accommodate Existing and Future Needs. Queens Boulevard-- from the Long Island Expressway to the CSX railroad line.	Community Wide	
4/40	DOT	Repair or construct new curbs or pedestrian ramps	Capital funding is being requested to continue with the substantial amount of damaged curbs throughout the district. Requesting an increase in funding to the NYCDOT curb replacement program/unit.	Community Wide	
5/40	HHC	Provide a new or expanded health care facility	With the former St. John's Hospital now closed, the residents of South Elmhurst and its surrounding vicinity are in need of a medical facility. Elmhurst Hospital is operating beyond capacity, and is struggling to keep up with the demand. The need for a medical center in the neighborhood of South Elmhurst cannot be overlooked.	Community Wide	

7. Summary of Prioritized Budget Requests

Queens Community Board 4 Capital Requests

Queens Community Board 4 submitted 40 capital budget requests, organized by priority.

Priority / Continued

Support (CS)	Agency	Request	Explanation	Location	Supporters
6/40	DOE	Provide, expand, or enhance funding for Child Care and Head Start programs	Currently, there are an insufficient number of Early Childhood centers in our district that service Infants and Toddlers and their parents. With the expansive growth of immigrant families with young children in our district, there is a great need for Early Childhood Services for children Birth to Three. The services that we are in need of are quality infant-toddler care and early childhood education provided by trained professionals with a culturally sensitive and linguistically sensitive focus.	Community Wide	
7/40	HHC	Provide a new or expanded health care facility	Requesting a rehabilitation center within the confines of Community Board 4. Drug & alcohol counseling, mental health, and physical therapy services could be just some of the services offered.	Community Wide	
8/40	NYPD	Provide surveillance cameras	Several sectors within the district are in need of added security measures, specifically the corners spanning the entire stretch of Roosevelt Avenue, the adjoining Junction Boulevard, and a high-crime section of 57th Avenue between 99th Street and Junction Blvd. Requesting that surveillance cameras be considered.	Community Wide	
9/40	DPR	Fund an Existing Community Garden	Requesting improvements to this heavily supported community garden. Gardening equipment, fencing, better lighting, and improved paths are just a few of the improvements being requested by the community.	Corona Tax Payers' Garden Radcliff Ave and 102nd St	

7. Summary of Prioritized Budget Requests

Queens Community Board 4 Capital Requests

Queens Community Board 4 submitted 40 capital budget requests, organized by priority.

Priority / Continued

Support (CS)	Agency	Request	Explanation	Location	Supporters
10/40	DPR	Reconstruct or upgrade a park or amenity (i.e. playground, outdoor athletic field)	At just over 3 acres, and located at the northernmost border of Community Board 4, Park of the Americas is in need of refurbishing. The very pressing issue of intoxicated visitors within the park has gotten out of hand. Measures should be taken to discourage such activity. Security measures (benches, led lighting, security cameras, etc.) are all very welcome additions to this park that is located directly across from an elementary school. While we understand that funding has already been allocated to a portion of the park, we are requesting funding to complete second portion of renovations.	Park of the Americas	
11/40	DEP	Inspect storm sewer on specific street segment and service, repair or replace as needed	Reconstruction and Upgrade of Existing Sewer System. 111th Street from Corona Avenue to Roosevelt Avenue.	Community Wide	
12/40	FDNY	Rehabilitate or renovate existing fire houses or EMS stations	Continue funding for complete analyzation, and reparation of firehouses within the district. Engine 287 Ladder 136 Battalion 46 86-53 Grand Avenue Elmhurst, NY 11373	Community Wide	
13/40	NYPD	Add NYPD parking facilities	For years, Community Board #4Q has requested dedicated vehicle parking for the 110 Precinct vehicles. Currently no off street parking is available for NYPD vehicles.	110th Precinct	
14/40	HPD	Provide more housing for extremely low and low income households	Community Board 4 has seen a very steady influx of new residents in the last few years, and will only continue to grow at a steady pace. The lack of affordable housing is encouraging "shacking up" in which large families are living out of single rooms and illegally converted basements. An Affordable Housing facility is desperately needed for both the convenience, and the safety of CB4's residents.	Community Wide	

7. Summary of Prioritized Budget Requests

Queens Community Board 4 Capital Requests

Queens Community Board 4 submitted 40 capital budget requests, organized by priority.

Priority / Continued

Support (CS)	Agency	Request	Explanation	Location	Supporters
15/40	DPR	Reconstruct or upgrade a park or amenity (i.e. playground, outdoor athletic field)	Requesting funding be allocated for the renovation of Triangle 90 (90th Street and Roosevelt Avenue) and Answer Triangle (94th Street and Roosevelt Avenue). These two small parks within very close proximity to each other could essentially be funded as a package deal. The commercial corridor of Roosevelt is in need of several infrastructural upgrades, so a superficial renovation to these two key parks along the corridor would be a welcome addition and an asset to local businesses and residents.(There has been interest from CBOs and local businesses to help out) (Attached photos)	Triangle 90 90th St and Roosevelt Ave	
16/40	DOT	Reconstruct streets	Reconstruction of streets in the surrounding area of 41st Avenue and Roosevelt Avenue	41st Avenue Roosevelt Avenue	
17/40	DPR	Reconstruct or upgrade a park or amenity (i.e. playground, outdoor athletic field)	The reflecting pools near the Unisphere in Flushing Meadows Corona Park (FMCP) have been improperly/barely used over the last few years. We are elated to know that recent funding has allowed for a partial renovation of these pools, However, additional funding is being requested to help with phase 2 of the adaptive renovation for Fountain of the Fairs and reflecting pools at FMCP.	Flushing Meadows Corona Park	
18/40	DPR	Reconstruct or upgrade a building in a park	With the substantial influx of events within this small park, renovations would be a welcome and much needed addition. The beautification of the front entrance, repainting of overhead steel beams, and implementation of security cameras throughout the grounds are all necessary upgrades to meet current and future use.	Playground for All Children	
19/40	DOT	Roadway maintenance (i.e. pothole repair, resurfacing, trench restoration, etc.)	This stretch of road adjacent to a major highway (Grand Central Parkway) is in dire need of a reconstruction. Curb replacement/creation should be a priority. Coordination and conversation with State DOT should be looked into.	114th St 43rd Av Roosevelt Av	

7. Summary of Prioritized Budget Requests

Queens Community Board 4 Capital Requests

Queens Community Board 4 submitted 40 capital budget requests, organized by priority.

Priority / Continued

Support (CS)	Agency	Request	Explanation	Location	Supporters
20/40	DFTA	Create a new senior center or other facility for seniors	With the growing, aging population within CB4, the need for an assisted living facility cannot be overlooked. While Corona does in fact have such a facility, the area of Elmhurst does not. Requesting that resources be allocated to obtain property, and build such a facility to house the senior population of South Elmhurst.	Community Wide	
21/40	SCA	Provide a new or expand an existing high school	The lack of high schools within the district is a cause for concern. With the recent influx of Elementary and Middle Schools throughout our district, adding a new high school would help our constituency to stay closer to home and will provide less overcrowding within the SD24.	Community Wide	
22/40	HPD	Provide more housing for medium income households	Community Board 4 has seen a very steady influx of new residents in the last few years, and will only continue to grow at a steady pace. An emphasis throughout the district is being put into low income housing, however, financial burden does not pertain strictly to low income households. Requesting funding to survey, obtain land, and eventually build an affordable housing facility for medium range income within the district.	Community Wide	
23/40	DOT	Reconstruct streets	A complete reconstruction of this very heavily utilized corridor from Roosevelt Avenue to the Horace Harding Expressway should be looked into. Curb cuts, traffic mitigation plans, street resurfacing, and curb replacements are all sorely needed to meet current and future	Junciont Blvd Roosevelt Av Horace Harding Expwy	
24/40	DPR	New equipment for maintenance	Requesting funding for parks maintenance vehicles: 4x4 crew cab, salt spreader, and powerlift gate (Ford-F 250) 4x4 single cab pick up with plow, powerlift gate, and "dumperdog" attachment	Community Wide	

7. Summary of Prioritized Budget Requests

Queens Community Board 4 Capital Requests

Queens Community Board 4 submitted 40 capital budget requests, organized by priority.

Priority / Continued

Support (CS)	Agency	Request	Explanation	Location	Supporters
25/40	DOT	Install streetscape improvements	Requesting streetscape improvements to aid in the beautification of commercial corridors throughout the district specifically Junction Blvd. bet Roosevelt Ave. & 43rd Ave. and 82nd Street bet. Roosevelt Ave. & Baxter Ave. While the 82nd Street BID does in fact maintain the latter section, improvements to lighting, flood mitigation, benches, planters etc. would be a welcome addition to both sections of road in the hopes that local businesses would benefit from the beautification.	Community Wide	
26/40	DPR	Reconstruct or upgrade a park or amenity (i.e. playground, outdoor athletic field)	Middleburgh Triangle is a small triangle located at the intersection of Corona Avenue, 90th Street and 48th Avenue. The small triangle even though maintained is a key historical location that would benefit from minor infrastructural upgrades. Benches for the bus stop, additional shrubbery, and historical signs emphasizing the neighborhood change from Middleburgh to Hastings to Newtown to present day Elmhurst should be emphasized as they showcase the rich history of our community. Additionally, Horse brook, Aske and Libra Triangles are all sites which tell a story of the rich history of our community. At the very least these facts should be included as part of the redesign of these small parks which should include benches, plantings/beautification, and historical facts via proper signage.	Middleburgh Triangle 90th Street 48th avenue and Corona Avenue	
27/40	HPD	Other affordable housing programs requests	While the Department of Housing Preservation and Development (HPD) provide loan programs the increased need for such programs can not be overlooked. Community Based Organizations (CBO's) such as Neighborhood Housing Services (NHS), do a great job in providing such services, but the demand for increased programs is exceedingly present specifically in low density (2-3 family) homes.	Community Wide	

7. Summary of Prioritized Budget Requests

Queens Community Board 4 Capital Requests

Queens Community Board 4 submitted 40 capital budget requests, organized by priority.

Priority / Continued

Support (CS)	Agency	Request	Explanation	Location	Supporters
28/40	DPR	Reconstruct or upgrade a park or amenity (i.e. playground, outdoor athletic field)	Residents of the Elmhurst community have been jogging along the outdoor perimeter of Newtown Field (92nd Street and 57 Avenue) for years as no official track exists within the area. However, a mere 2 blocks away, and sitting directly on the border of CB4, is Hoffman Park, a heavily utilized 3 acre park in need of renovation. In our opinion, this is a prime location for a proper jogging track. Ideally, funding can also be used to alleviate the prominent floor cracks that can be seen throughout the basketball, handball, and baseball fields. Implementation of a dog run would be a benefit to the local community as minimal space exists for this. (plan submission) (petition/ signatures on file)	Hoffman Park	
29/40	SCA	Provide technology upgrade	Many schools within our district strongly need tech upgrades such as whiteboards, laptops, calculators, tablets, etc. We are aware that the newer schools came with a lot of these tech upgrades already, so focus should be put towards the remaining pre-existing schools.	Community Wide	
30/40	OMB	Provide more community board staff	Community Boards are generally understaffed. An increase in funding is sorely needed to maintain current staffing as well as new hiring.	Community Board 4Q 46-11 104 Street	
31/40	HPD	Provide more housing for special needs households, such as seniors, or the formerly homeless	With the homeless crisis sweeping throughout the city, many communities have been seeing an increase in the number of shelters popping up within their constituencies. As these shelters continue to increase, to avoid the homeless crisis remaining stagnant it is important housing for formerly homeless as well as seniors be provided.	Community Wide	
32/40	DPR	Reconstruct or upgrade a building in a park	Over the past few years, new synthetic soccer fields were constructed within Flushing Meadows Corona Park, but not all were completed. Funding is being requested to complete the construction of the remaining synthetic soccer fields.	Flushing Meadows Corona Park	

7. Summary of Prioritized Budget Requests

Queens Community Board 4 Capital Requests

Queens Community Board 4 submitted 40 capital budget requests, organized by priority.

Priority / Continued

Support (CS)	Agency	Request	Explanation	Location	Supporters
33/40	NYPD	Provide a new NYPD facility, such as a new precinct house or sub-precinct	Requesting that an NYPD satellite station be installed within the confines of Flushing Meadows Corona Park to provide safety in this heavily used large park.	Flushing Meadows Corona Park	
34/40	DPR	Improvements to an Existing Community Garden	This garden, strongly supported by CB4Q has opened its doors to several community events and is the pride and joy of those who live near it. Requesting improvements to the surrounding sidewalk, fence, lighting, and pedestrian paths within the garden.	Sparrow's Nest Community Garden 54-01 101st	
35/40	DOB	Assign additional building inspectors (including expanding training programs)	With an emphasis on overdevelopment within our community, building inspectors have backlogs that can span months. Funding is being requested to improve and expand the inspector training program. More so, the inherent dangers with illegal conversions is a major concern. An increase in building inspectors with an emphasis on better training (obtaining of warrants, etc.) would be a tremendous help to accommodate current and future needs. Priority should be specifically given towards safety requirements and proper construction practices.	Community Wide	

7. Summary of Prioritized Budget Requests

Queens Community Board 4 Capital Requests

Queens Community Board 4 submitted 40 capital budget requests, organized by priority.

Priority / Continued

Support (CS)	Agency	Request	Explanation	Location	Supporters
36/40	DPR	Forestry services, including street tree maintenance	The segment of Queens Boulevard from 90th Street to 77th Street is in need of tree maintenance/ pruning as the majority of trees along this stretch of road are dead and/or dying. In conjunction with the Queens Boulevard Safety Program in which bike lanes were implemented along this boulevard, the added benefit from a decrease in the carbon foot prints along the corridor would be a huge asset to the bike riders, and pedestrians alike. Funding is being requested to look into the maintenance of trees along the boulevard. Additionally, trees surrounding Newtown Field (57 Ave and 92 Street) are in dire shape. This same initiative should be extended to this stretch of road adjacent to Queens Boulevard.	Queens Boulevard 90th Street 77th Street	
37/40	NYPD	Provide a new NYPD facility, such as a new precinct house or sub-precinct	Requesting that a satellite precinct be considered to the western side of Elmhurst, specifically the areas around the Queens Place, and Queens Center Malls.		
38/40	ACS	Other foster care and child welfare requests	Although ACS strives to keep families together, there are times when children need alternative placements such as foster homes. Training of foster families increases the child's safety and ability to navigate through the difficult journey of being placed outside his/her home. In the first 8 months of FY 18, there was an increase in certified foster homes; more importantly is how well trained these homes are. Children placed into a foster family have been inevitably traumatized on different levels and need support of caring and knowledgeable families to succeed. Therapeutic foster homes are homes that have been identified and specifically trained to work with special needs children. Requesting funds for continued foster parent recruitment, training and increase in therapeutic foster homes.	Community Wide	Administration for Children's

7. Summary of Prioritized Budget Requests

Queens Community Board 4 Capital Requests

Queens Community Board 4 submitted 40 capital budget requests, organized by priority.

Priority / Continued

Support (CS)	Agency	Request	Explanation	Location	Supporters
39/40	DHS	Expand street outreach	Breaking Ground currently operates via 4 outreach teams in Queens 24/7/365 (in all weather), as well as a case management staff that participates in client transports to medical appointments, housing appointments, housing placements, etc., One of their biggest needs is vehicles. While the agency does have a fleet, vehicles' life spans are shorter than average since their mileage racks up so quickly. Requesting funding be allocated to an increase in vehicles to continue providing this very necessary service.	Community Wide	
40/40	HRA	Provide, expand, or enhance community outreach on HPD programs and services	A recent uptick of homelessness throughout the City has become a major cause for concern for our communities. Several programs are geared towards providing housing via shelters, but the fact remains that homelessness can happen to anyone at any time. It is our feeling that there is simply not enough emphasis put into preventive programs designed to keep people out of the system altogether. Requesting funding for additional informational sessions and campaigns to be brought to our communities. Such sessions must be given in multiple languages, and conducted on a year round basis.	Community Wide	
CS	DOT	Roadway maintenance (i.e. pothole repair, resurfacing, trench restoration, etc.)	The streets within this area (Grand Avenue 57th Avenue, Queens Boulevard) are in great disrepair and many have no viable curbs or no curbs at all.	57th Ave Grand Avenue, LIRR Queens Blvd	
CS	DPR	Reconstruct or upgrade a park or amenity (i.e. playground, outdoor athletic field)	CC Moore Playground is a heavily utilized playground. The design is obsolete. Redesign requested to meet the needs of the current park users. Issues with smoking, gambling, gang activity, rundown bathroom facilities, homeless, etc.	CC Moore Playground	

7. Summary of Prioritized Budget Requests

Queens Community Board 4 Capital Requests

Queens Community Board 4 submitted 40 capital budget requests, organized by priority.

Priority / Continued

Support (CS)	Agency	Request	Explanation	Location	Supporters
CS	DYCD	Provide, expand, or enhance after school programs for elementary school students (grades K-5)	There is a tremendous need for after school programs for elementary school students grades k-5. At this early stage in the students' lives, it is important to have enriching programs that are both educational and fun. Said programs will also help parents who have limited work hours, will help the children with social skills, and give students an advantage as they progress in their education.	Community Wide	
CS	DSNY	Provide more frequent organics/recycling collection service for schools and institutions	We are looking for funding to help and support organics pickups in schools. Currently, the organics collection can be seen primarily within QW05, but many of our schools don't participate in the program	Community Wide	
CS	NYCTA	Repair or upgrade subway stations or other transit infrastructure	Reopen a Train Station on Broadway in Queens for the MTA LIRR. Due to heavy public transportation demands CB #4Q is requesting the reopening of a train station on the MTA LIRR Port Washington Line on Broadway in Queens.	Former Broadway LIRR Station Broadway and Whitney Avenue	
CS	NYCTA	Improve accessibility of transit infrastructure, by providing elevators, escalators, etc.	Comprehensive study should be conducted towards upgrades and handicap accessibility to these very heavily utilized stations. Grand Avenue, Woodhaven Blvd. Elmhurst Avenue.	Community Wide	

7. Summary of Prioritized Budget Requests

Queens Community Board 4 Capital Requests

Queens Community Board 4 submitted 40 capital budget requests, organized by priority.

Priority / Continued

Support (CS)	Agency	Request	Explanation	Location	Supporters
CS	DPR	Reconstruct or upgrade a park or amenity (i.e. playground, outdoor athletic field)	William F. Moore Park is a heavily utilized small park in the heart of Corona. The park adjacent to the famous Parkside Restaurant and the Lemon Ice King of Corona is in need of renovation. Improvements to the existing flag pole, additional shrubbery/plantings, and overall infrastructural improvements would be a welcome addition to the surrounding community. Upgrades to the bocce ball court would be a welcome addition as well as proper drainage for the residual clay from the court that can be seen all throughout the park and its surrounding sidewalk(s). The addition of a performing stage/ platform would be a welcome addition as this parks sees regular programming i.e: Given the proximity to the home of Louis Armstrong, it would make sense that such history be showcased.	William F. Moore Park 107-06 Corona Avenue	
CS	DYCD	Provide, expand, or enhance after school programs for middle school students (grades 6-8)	The low allocation of funds within CB4 is surprisingly low considering SD 24 is currently the most overcrowded in the city. Emphasizing the dire need for after school programming for adolescents grades 6-8 who at this stage in their lives need more aggressive mentoring and help with school work.	Community Wide	
CS	DEP	Inspect storm sewer on specific street segment and service, repair or replace as needed	Reconstruction and Upgrade of Sewer System. Junction Boulevard from the Long Island Expressway to Roosevelt Avenue. 57th Avenue from Queens Boulevard to 99th Street. Horace Harding Expressway from 108th Street to Queens Boulevard.	Community Wide	

7. Summary of Prioritized Budget Requests

Queens Community Board 4 Capital Requests

Queens Community Board 4 submitted 40 capital budget requests, organized by priority.

Priority / Continued

Support (CS)	Agency	Request	Explanation	Location	Supporters
CS	DPR	Reconstruct or upgrade a park or amenity (i.e. playground, outdoor athletic field)	We must decide whether this should be a passive or active park. On any given morning, tai-chi practitioners can be seen using this park religiously between the hours of 7 and 10am. Upon release of the many schools within walking distance however, the dynamics of this park change. A better means of egress to access the comfort station(s) should be considered during design. In light of historical findings, special attention should be paid to the amount of active use within the park. Historical placard should also be added.	Newtown Playground	
CS	DYCD	Other youth workforce development requests	Our district would benefit greatly from having a youth center that would ideally support our youth and families. Educational programs, mentoring, homework help, extracurricular activities, and counseling are just some of the services that the youth within our district are in desperate need of. Seeking funding to obtain land, and construct a center within the confines of our district.	Community Wide	
CS	DEP	Inspect storm sewer on specific street segment and service, repair or replace as needed	The triangle area located at Broadway, 76th Street, and 41st Avenue constantly floods at the crosswalk curb cuts. Standing water is always present. Install catch basins in this area to reduce flooding.	Broadway 76th Street 41st Avenue	
CS	DEP	Evaluate a public location or property for green infrastructure, e.g. rain gardens, stormwater greenstreets, green playgrounds	Requesting more staffing for the maintenance of the recently implemented Green Infrastructure initiative. Currently DEP staff is scheduled to maintain and clean these sites on a weekly basis, but a majority of our sites go for weeks, possibly months with no visits. Additionally, CB4Q has reported several cases in which homeowners receive summonses for garbage in these bioswales. Current staffing is simply not enough. Requesting funding to meet current and future demand.	Community Wide	

7. Summary of Prioritized Budget Requests

Queens Community Board 4 Capital Requests

Queens Community Board 4 submitted 40 capital budget requests, organized by priority.

Priority / Continued

Support (CS)	Agency	Request	Explanation	Location	Supporters
CS	QL	Create a new, or renovate or upgrade an existing public library	Renovation of Elmhurst Library. **Continued Support	Elmhurst Library	
CS	LPC	Renovate or upgrade an existing cultural facility	The Old Saint James Episcopal Church is due for exterior and interior restoration and maintenance. The NY Landmarks Conservancy is willing to help again and an assessment would be needed for guidance in restoration work, including repainting and restoring of wood shingled siding, replacement of window facing 51st Ave, necessary updates of interior, sprucing up of side yard with use of remaining slate and stones in the garden to keep character, and installation of historical signage. Also, the need for recognition and restoration of the ancient cemetery around The Reformed Church of Newtown is crucial to protecting the character and history of Elmhurst. Signage honoring the church's and graveyard's history is needed, as well as fencing to protect the open area of the graveyard.	Old St. James & Ref. Newtown Ch	Community Board 4Q
CS	DEP	Evaluate a public location or property for green infrastructure, e.g. rain gardens, stormwater greenstreets, green playgrounds	85th Street abuts MTA /LIRR property. Green infrastructure is sorely needed in this area. DEP has already conducted studies to consider this location for green infrastructure, and has in fact identified it as a potential site. Seeking implementation and completion of this long awaited / approved project.	85 Street 55th Road 57th Road	
CS	DOT	Repair or construct new curbs or pedestrian ramps	Some center island malls on 111th Street were completely renovated, but the remaining malls are in need of a complete overhaul. The curbs should be raised as part of the reconstruction so that illegal parking can be discouraged, and trees and shrubbery should be planted to better the quality of life for residents facing the malls.	111th St Sautell Ave 43rd Ave	

7. Summary of Prioritized Budget Requests

Queens Community Board 4 Capital Requests

Queens Community Board 4 submitted 40 capital budget requests, organized by priority.

Priority / Continued

Support (CS)	Agency	Request	Explanation	Location	Supporters
CS	DPR	Reconstruct or upgrade a park or amenity (i.e. playground, outdoor athletic field)	Continuing support in favor of "friends of" groups is encouraged. performances, pyhblic asafety/anti smoking	Louis Simeone Park	
CS	DOT	Upgrade or create new plazas	Renovation of Corona Plaza Funding has been allocated by CM Ferreras of CD21. *Continued Support	Corona Plaza	
CS	DOE	Provide, expand, or enhance funding for Child Care and Head Start programs	In order to encourage higher education for the adults of CB4, a day care facility should be looked into. It would encourage parents to work on a steady schedule, and possibly further their education.	Community Wide	

7. Summary of Prioritized Budget Requests

Queens Community Board 4 Expense Requests

Queens Community Board 4 submitted 25 expense budget requests, organized by priority.

Priority	Agency	Request	Explanation	Location	Supporters
1/25	DCP	Study land use and zoning to better match current use or future neighborhood needs	CB4Q is experiencing overdevelopment at an alarming rate. Existing one and two family homes are demolished and replaced with high density buildings that are out of character with the surrounding neighborhood. The existing infrastructure was built mainly for low density housing and the additional units place an undue strain on our fragile infrastructure. Requesting that DCP evaluate the current zoning in CB4Q taking into account the current state of our infrastructure, and identify areas where zoning changes would improve the quality of life for our constituency.	Community Wide	
2/25	DPR	Forestry services, including street tree maintenance	There is a backlog of requests for tree pruning. The current pruning cycle is far too long. Funding is needed to shorten this cycle, and to restore pruner and climber positions to the DPR. A shorter year pruning cycle will produce stronger, healthier, and better looking trees. A strong maintenance program is needed to care for existing trees and for the continuation of the million additional trees that are to be planted in NYC.	Community Wide	
3/25	EDC	Expand graffiti removal services on private sites	The ongoing problem of graffiti plaguing our district continues to grow. While several initiatives (Forever Graffiti Free, NYPD, DSNY) have been effective, more funding to provide more materials to agencies, local civic organizations and community groups would be a huge benefit to our district.	Community Wide	
4/25	DPR	Forestry services, including street tree maintenance	Trees are a vital component of our environment. Homeowners affected by tree roots lifting sidewalks should not have to wait years before repairs are completed. Although funding has increased in the past, an additional increase in FY 2020 is requested to help complete the existing backlog of requests.	Community Wide	
5/25	DOT	Other transportation infrastructure requests	Increase and maintain funding for the curb and sidewalk replacement program.	Community Wide	

7. Summary of Prioritized Budget Requests

Queens Community Board 4 Expense Requests

Queens Community Board 4 submitted 25 expense budget requests, organized by priority.

Priority	Agency	Request	Explanation	Location	Supporters
6/25	FDNY	Upgrade communication equipment to improve emergency response	Requesting that existing ERS boxes throughout the district retain their cast iron bases, and be retrofitted with the more modern "push button" system vs. complete replacement. These boxes have a direct intercom link to both Fire and Police Dispatchers, and as such should be wired to existing electrical poles to keep them functioning.	Community Wide	
7/25	DOT	Other transportation infrastructure requests	The rapid increase in population within CB4Q has left several requests for repairs pending for far longer than they should be. Requesting an increase in staff for roadway maintenance (pothole and reconstruction crews). Additionally requesting an increase in staffing for replacement of missing/damaged signs (traffic device maintainers)	Community Wide	
8/25	DSNY	Increase enforcement of illegal posting laws	Several commercial corridors and their surrounding areas are infamous for illegal postings on utility poles, walls, and construction fences. The entire stretch of Roosevelt Avenue from 72nd Street to 114th Street and its adjacent side streets are havens for these postings. Business owners do their best to remove these flyers, but with zero enforcement, it is a losing and discouraging battle. Funding is being requested to bring enforcement to our district.	Roosevelt Ave 72nd St 114th St	
9/25	NYPD	Provide additional patrol cars and other vehicles	Requesting 2 to 3 unmarked vehicles to meet current and future needs.	110th Precinct	
10/25	DPR	Provide better park maintenance	The large amount of parks within the district combined with the lack of proper personnel to maintain them continues to be a problem throughout the district. Requesting additional parks maintenance personnel, Parks Enforcement Police (PEP), foresters to meet current and future needs. Police barricades throughout the park as well as the closure of the Queens Museum of Art (QMA) during key events is a deterrent, and not a welcome to park goers.	Community Wide	
11/25	FDNY	Expand funding for fire prevention and life safety initiatives	The FDNY Fire Safety Educational Unit needs additional funding to provide smoke detectors and carbon monoxide detectors for distribution to the public. This is a public service that will save lives.	Community Wide	

7. Summary of Prioritized Budget Requests

Queens Community Board 4 Expense Requests

Queens Community Board 4 submitted 25 expense budget requests, organized by priority.

Priority	Agency	Request	Explanation	Location	Supporters
12/25	HPD	Expand tenant protection programs	Tenant protection services are designed to preserve affordable housing by detecting and curtailing patterns and practices of landlord fraud. With the dramatic growth seen within CB4 our constituency is in need of extensive services that would help them to preserve their quality of life. Funding is being requested for expansion of these programs.	Community Wide	
13/25	DOHMH	Other animal and pest control requests	With mosquito-borne illnesses such as Zika, and West Nile within our communities, funding request would entail more staffing, and the continuation of public awareness campaigns to teach prevention in multiple languages. Our public plazas and abandoned properties are particularly vulnerable to rats. Requesting funding to increase awareness, and mitigation of pests (rats and mosquitoes) throughout the community.	Community Wide	
14/25	DOHMH	Create or promote programs for education and awareness on nutrition, physical activity, etc.	The communities of Elmhurst and Corona both see farmers' markets, and several campaigns geared towards condoning walking, and riding vs driving. Our communities would like to continue to see expansions of programs (WIC at farmers' markets, bike helmet giveaways, health insurance, etc.) Material and outreach should be emphasized in multiple languages.	Community Wide	
15/25	SBS	Support BID Feasibility Analysis or Formation Planning	CBQ currently has a small BID stretching from Roosevelt Avenue to Baxter Avenue, however other sectors throughout the district would benefit from this initiative. The community of Elmhurst, an up-incoming commercial mecca would greatly benefit from a potential BID, specifically along the corridor of Broadway from Queens Boulevard to Baxter Avenue.	Community Wide	
16/25	QL	Extend library hours or expand and enhance library programs	Community Board #4Q's catchment area of Corona, Corona Heights, and Elmhurst is densely populated with a wide variety of ethnic groups comprised of children, adults, and senior citizens. Our library branches and programs the libraries provide are heavily utilized. We will continue to support six day service, look to support 7 day service when applicable.	Community Wide	

7. Summary of Prioritized Budget Requests

Queens Community Board 4 Expense Requests

Queens Community Board 4 submitted 25 expense budget requests, organized by priority.

Priority	Agency	Request	Explanation	Location	Supporters
17/25	DSNY	Increase enforcement of dirty sidewalk/dirty area/failure to clean area laws	Several areas of our district are seeing a substantial amount of garbage pile up, with little to no penalty to the property owners. Commercial corridors such as Queens Boulevard, Roosevelt Avenue, Junction Boulevard, Broadway, and National Street near Corona Plaza are infamously known for excessive littering, but enforcement is scarce. Inspectors have often been witnessed turning a blind eye to several establishments. The quality of life of our small businesses along these specific corridors are in need of a more cohesive campaign to clean up our streets.	Community Wide	
18/25	DOT	Other transportation infrastructure requests	Requesting surveying and studies to consider infrastructural improvements (additional lighting, signage and street maintenance/curb replacement/repair) to this dark stretch of road in the backstreets of Elmhurst which was recently approved by DEP for Green Infrastructural upgrades.	85th St 55th Ave 57th Ave	
19/25	FDNY	Other FDNY facilities and equipment requests	The majority of the firehouses within our district already have generators in case of a power outage. However, Engine 289 in Corona is still operating with an above ground, multiple unit setup. Requesting funding to provide an in ground generator for this heavily utilized station.	Engine 289 97-28 43rd Avenue	
20/25	SBS	Support BID Feasibility Analysis or Formation Planning	Community Board 4's only BID is grossly understaffed taking into account its catchment area, and its growth potential. Requesting that funds be allocated to increase the staffing for this BID in the heart of Jackson Heights and Elmhurst.	82nd Street Partnership 37-06 82nd Street	
21/25	DCLA	Provide more public art	Public art serves as a means to deter graffiti within our parks. More funding should be allocated to grants specifically geared towards public art. Funding should effectively cover both initial implementation as well as continued maintenance of projects for consecutive years.	Community Wide	

7. Summary of Prioritized Budget Requests

Queens Community Board 4 Expense Requests

Queens Community Board 4 submitted 25 expense budget requests, organized by priority.

Priority	Agency	Request	Explanation	Location	Supporters
22/25	DHS	Provide rental assistance/vouchers for permanent housing	With the proliferation of hotel shelters throughout the city, the need for services to get our residents out of shelters should be more heavily emphasized. Family shelters within the district currently house multi generational homeless families The cost of housing these families into shelters/hotels far exceeds the cost of permanent housing. Funding should instead be allocated to preventative programs, and those geared towards removing people from the "system".	Community Wide	
23/25	HRA	Provide Metrocards to help low-income New Yorkers get to work and around the City	With the ridership at many of our stations as high as 17 million riders per year for Roosevelt and as high as 6.8 million for Woodhaven Blvd, it is obvious that our residents are using mass transit as a means to get around. In conjunction with this, the low income cap throughout the district should reflect the needs for such a service. Requesting funding for metro cards to low income residents throughout the areas of Corona and Elmhurst.	Community Wide	
24/25	DFTA	Enhance programs for elder abuse victims	Requesting funding to expand Elder Abuse Prevention programs throughout the district.	Community Wide	
25/25	DFTA	Provide additional senior center staffing	In previous years, DFTA's vision to create parity in our senior centers was accomplished for FY19. Requesting an increase to existing funding in order to enhance case management helping to reduce caseloads to 65 would be beneficial to our senior population.	Community Wide	

Appendix - Supporting Materials

The Community Board has provided the following supporting materials which can be accessed by clicking on the link(s) below or by copying and pasting the link(s) into a browser.

Parks, Cultural and other Community Facilities



LPC-Old St. James Ep. Church

<https://a002-oom03.nyc.gov/IRM/Handlers/Campaign/Attachments.ashx?attachmentId=DAFB4FF6-0302-4B3A-9BA5-D49C3AE27FA7>