

***Statements of Community
District Needs
and
Community Board
Budget Requests***

Fiscal Year
2022



Published by:
NYC
PLANNING
February 2021

**Queens
Community District
4**

INTRODUCTION

The annual Statements of Community District Needs (CD Needs Statements) and Community Board Budget Requests (Budget Requests) are Charter mandates that form an integral part of the City's budget process. Together, they are intended to support communities in their ongoing consultations with city agencies, elected officials and other key stakeholders and influence more informed decision making on a broad range of local planning and budget priorities. This report also provides a valuable public resource for neighborhood planning and research purposes, and may be used by a variety of audiences seeking information about New York City's diverse communities.

HOW TO USE THIS REPORT

This report represents the Statement of Community District Needs and Community Board Budget Requests for Fiscal Year (FY) 2022. This report contains the formatted but otherwise unedited content provided by the community board, collected through an online form available to community boards from August to November, 2020.

Community boards may provide substantive supplemental information together with their Statements and Budget Requests. This supporting material can be accessed by clicking on the links provided in the document or by copying and pasting them into a web browser, such as Chrome, Safari or Firefox.

If you have questions about this report or suggestions for changes please contact:

CDNEEDS_DL@planning.nyc.gov

This report is broadly structured as follows:

1. Overarching Community District Needs

Sections 1 – 4 provide an overview of the community district and the top three pressing issues affecting this district overall as identified by the community board. Any narrative provided by the board supporting their selection of their top three pressing issues is included.

2. Policy Area-Specific District Needs

Section 5 is organized by seven distinct policy areas aligned with the service and program areas of city agencies. For each policy area, community boards selected the most important issue for their districts and could provide a supporting narrative. The policy area section also includes any agency-specific needs and a list of relevant budget requests submitted by the community board. If the community board submitted additional information outside of a specific policy area, it may be found in Section 6.

3. Community Board Budget Requests

The final section includes the two types of budget requests submitted to the City for the FY22 budget cycle; one list for capital and another for expense budget requests. For each budget request, community boards were able to provide a priority number, explanation, location, and supporters. OMB remains the definitive source on budget requests submitted to city agencies.

Disclaimer

This report represents the Statements of Community District Needs and Community Board Budget Requests of this Community District for Fiscal Year 2022. This report contains the formatted but otherwise unedited content provided by the community board.

Budget Requests: Listed for informational purposes only. OMB remains the definitive source on budget requests and budget request responses.

Budget Priorities: Priority numbers apply to expense and capital Budget requests from all policy areas. A complete list of expense and capital budget requests by this Board sorted by priority can be found in Section 7 of this document.

Supporting Materials: Some community boards provided substantive supplemental information. This supportive material can be accessed by clicking on the links provided in the document or by copying and pasting the links provided in the Appendix into a browser.

TABLE OF CONTENTS

Introduction

1. Community Board Information

2. Community District Profile and Land Use Map

3. Overview of Community District

4. Top Three Pressing Issues Overall

5. Summary of Community District Needs and Budget Requests

Health Care and Human Services

Youth, Education and Child Welfare

Public Safety and Emergency Services

Core Infrastructure, City Services and Resiliency

Housing, Economic Development and Land Use

Transportation

Parks, Cultural and Other Community Facilities

6. Other Budget Requests

7. Summary of Prioritized Budget Requests

1. COMMUNITY BOARD INFORMATION

Queens Community Board 4

Address: 46-11 104 Street, 1st Floor
Phone: (718) 760-3141
Email:
Website: www.nyc.gov/queenscb4

Chair: Louis Walker
District Manager: Christian Cassagnol

2. COMMUNITY DISTRICT PROFILE AND LAND USE MAP

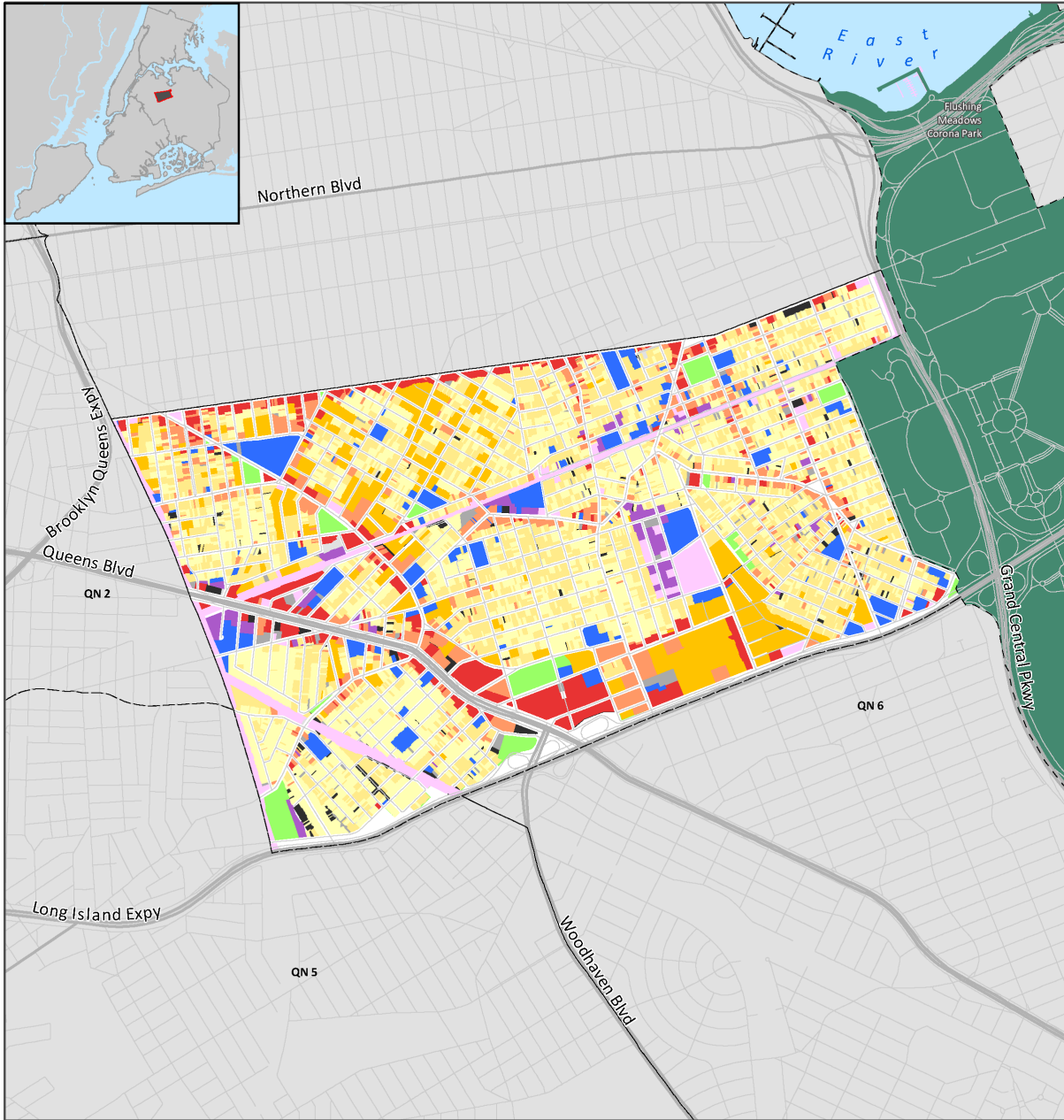
For the most up-to-date information about your Community District's built environment, socioeconomic, and demographic conditions, please visit NYC Department of City Planning's Community District Profiles tool at communityprofiles.planning.nyc.gov.

Queens Community District 4 - Land Use



- | | | | |
|--|--|---|---|
| One & Two Family Buildings | Commercial/Office Buildings | Open Space | Community Districts |
| MultiFamily Walkup Buildings | Industrial/Manufacturing | Parking Facilities | |
| MultiFamily Elevator Buildings | Transportation/Utility | Vacant Land | |
| Mixed Commercial/Residential Buildings | Public Facilities & Institutions | All Others or No Data | |

Source: MapPLUTO™ 20v7
 BYTES of the Big Apple
 Created January 2021



3. OVERVIEW OF COMMUNITY DISTRICT

Queens Community Board 4Q (CB4Q) is a culturally diverse community that encompasses the area of Corona (south of Roosevelt Avenue) and Elmhurst. The total land area of Community Board 4Q is 2.4 square miles, bounded by Roosevelt Avenue to the North, Flushing Meadow Corona Park (FMPC) to the east, the Horace Harding Expressway to the south, and the New York Connecting Railroad (CSX) to the West. According to the 2010 Census, the population of CB4Q was 172,598, a 3.3% increase from the 2000 census.

Overdevelopment

The ongoing problem of overdevelopment continues within CB4Q. The current levels of service and infrastructure can no longer absorb the additional housing units. To secure the future stability of CB4Q, careful consideration must be given to the rezoning of our community. In 2018, there were 165,988 permits issued by the Buildings Department. In the first three quarters of 2019, 120,668 permits have been issued, putting us on track to meet or exceed last year's numbers. With the rapid increase in development in the city, it is crucial that the Department of Buildings has enough building inspectors and staff to adequately ensure the safety of the over 1.1 million buildings in NYC. In FY 19, the average response time for Priority B complaints was 11.4 days. While Priority B complaints aren't life-threatening, they can be indicators that something about the building is unsafe. The Department of Buildings needs more staff so that they can continue to decrease the response time to possible hazardous complaints. No matter what we say in an attempt to please the case for more funding for DOB, no one can say it better than former Buildings Commissioner Rick Chandler, who said in a 2018 interview, "I think if we had ten times the resources ..., we would still be just making a dent." While DOB has made great strides since then, it has hardly reached the level of resources Commissioner Chandler hoped they would one day have to address all of the city's needs.

Health Initiatives, and Health Care Facilities

For several years now, CB4Q has proudly been home to two farmers markets, (Corona Plaza, and Elmhurst Hospital) The possibility of a 3rd to cover the South Elmhurst area is a request that our community has been actively seeking for some time. We hope that GrowNYC increases its footprint, and work with the community in identifying a space with the intent of bringing more markets.

Specifically, in the wake of the current pandemic, fitness classes, and other health-related initiatives geared towards providing our community with the knowledge and resources they need to stay fit are happily supported throughout our constituency. Urgent care facilities throughout the district are indeed a welcome addition as many constituents see these facilities as a cheaper, quicker alternative to the negative stigmas associated with an actual hospital. Although these facilities have gained popularity, the fact remains that the residents of the surrounding neighborhoods of Elmhurst, Corona, Maspeth, and Glendale are still in need of an actual hospital. Urgent care facilities are not made to replace hospitals, but to work in conjunction with them. We are fortunate to have the Corona Community Ambulance Corps. (CCAC), a volunteer-based ambulatory organization that serves as a supplement to existing services. Despite a minimal funding stream, the Corps still depends on volunteers and continues to operate with minimal resources; funding is not only welcome but in fact, necessary.

Senior Housing

Sections of the district specifically in Elmhurst need affordable senior housing. Exorbitant rent and overdevelopment throughout our community are leaving many seniors displaced with no place to turn. Waiting lists on housing take years to move, and seniors are left with little to no choice as they wait for a spot to be available. Funding is sorely needed to identify and obtain property to construct such a facility.

Youth/Education/ Family Services

Although New York City as a whole will experience a downward trend in school enrollment in the next ten years, School District 24 (SD24) encompassing CB4Q will see an upward trend in enrollment. We will continue to support the Department of Education and the School Construction Authority (SCA) in their efforts to identify additional new sites for schools with an emphasis on high schools as the district only has 2.

Early Childhood Services

With the expansive growth of immigrant families with young children in our district, there is a great need for Early Childhood Services for children Birth to Three. The services that we require are quality infant-toddler care and early childhood education provided by trained professionals with a culturally sensitive and linguistically sensitive focus. Currently, there is an insufficient number of Early Childhood centers in our district that service Infants and Toddlers and their parents and we are in desperate need of facilities to provide the space to render such services. According to a recent Unicef report on early childhood development, an economically disadvantaged child has the opportunity to thrive socially and academically when provided with early intervention and early childhood services.

Public Safety

Since 1988, the Community Board has put the renovation of the 110th Precinct at the very top of its yearly capital requests. For approximately 7 decades, this facility has seen little to no improvements to its overall infrastructure. Both within and outside the facility, structural crumbling, loose bricks, and flooding are common. As one of the busiest precincts in Queens North, with close to 250 uniformed and civilian personnel (and growing), this structure is a potential danger that is unfair to those tasked with keeping our communities safe. Additionally, the community has been requesting a proper parking facility for the 20 or so vehicles being stored along the residential block surrounding the precinct. In a district where parking is at a premium, we should be looking to provide parking for our officers all the while returning parking spaces to the residents of the surrounding community. Throughout the district, there is an issue with vehicles illegally displaying "for sale" signs on them. While we continue to be at the forefront in bringing these vehicles to the attention of the agencies responsible, there simply isn't enough manpower, and laws are far too lax. Vehicles are being blatantly parked along streets; some with plates, others without, and in many cases, those who do have plates only display them in the rear of the vehicle enabling them to use the vehicle's second plate on another one. The majority of these vehicles are being sold by local repair shops who have accepted the low summonses as the norm while they continue to sell the vehicles. The Dept. of Sanitation can tag a vehicle with no plates, but due to the multiple-day turnaround time, the vehicle is moved far before enforcement can impound it. The low cost of the summonses is simply not enough to deter the sales of these vehicles. Our Board is in full support of legislation that will help to stop these unfair practices from continuing to manifest themselves within our neighborhoods.

Parks & Historical Preservation

The community of Elmhurst, Queens, is rich in cultural history with many buildings dating back to the 1700s. One of the first religious buildings in Newtown was the old St. James Episcopal Church (Elmhurst's oldest remaining building.) Other distinctive buildings in the community include Newtown High School and the Elks Lodge. Not only does the community boast of architecture from the 1890s, but it is also rich in artifacts dating back to an African cemetery in the 1800s located on 90th Street. In the last few years, a bone fragment was found at Newtown Playground which served as a cemetery during colonial times, and a cistern was found at CC Moore Playground during a 1992 construction project. Elmhurst also features the dedication of the Elmhurst History and Cemeteries & Preservation Society (EHGPS) which is a group founded by Newtown Civic working toward landmarking, researching, documenting, and preserving the history of a community which dates back to 1652 and is the second oldest community in Queens, behind Flushing. The rich history surrounding CB4 is fascinating and should be recognized as such. Several parks with significant historical meaning often have their history forgotten due to a lack of properly displayed information. With the increase in development geared towards promoting tourism specifically around Elmhurst, historical facts can easily be forgotten. At the very least, proper signage should be implemented at key locations (parks, cemeteries) throughout the district as is done in rural Pennsylvania towns. Emphasis should be put on the multitude of parks scattered throughout our Board as a starting point as these parks are often historical pillars that tell stories of Elmhurst, Newtown, and Corona. Furthermore, applications for landmarks are often overlooked, and denied, a practice that will only serve to further hide the rich past that makes up CB4. Our parks are also cultural spaces, a fact that is often forgotten. With Queens Parks ratings as high as they are, we should be looking to encourage visitors and tourists to enjoy our public spaces to their full capacity. Future park schematics/ designs should all a performance space baselined into their designs since their inception. Such spaces would help to tackle health issues and promote wellness via programs such as ShapeUpNYC. Public performances would also increase, as such spaces would better accommodate and essentially promote more holiday ceremonies throughout the district celebrating the multitudes of ethnic groups that make up our district.

Transportation & Transit Services

Corona & Elmhurst are heavily immigrant, densely populated, working-class neighborhoods, with all the street life, bustling small-business entrepreneurialism, and social life that implies. We rely upon and--in normal times--crowd & stress our mass transit and roadway infrastructure. Over the past decade or so, we have also seen a marked increase in visitors, both New Yorkers & tourists. Longstanding attractions in Flushing Meadows Corona Park (Mets, USTA, Queens Zoo, Museum, Queens Theatre, Terrace on the Park, NY Hall of Science) have been joined by new draws including the Aquatic Center and Rink, Queens Night Market, and Maker Faire. There has also been a surge in culinary tourism throughout CB4, and two of the city's largest malls are here, on Queens Blvd. In fact, in 2015, Time Magazine's Lonely Planet issue named Queens the Number 1 tourist destination in the country. Our subway and roadway infrastructure must be maintained for our residents and businesses to thrive. Our streets are crowded with pedestrians, drivers, and cyclists, as well as users of new modes of micro-mobility, such as e-bikes and electric and foot-powered scooters. All these people must be kept safe as they interact. Most of CB4Q is within walking distance of our subway lines, but a large piece of South Corona is solely reliant on bus service. There are two bus nodes in CB4!, a terminal at 74th St and Roosevelt Ave, and on streets around Queens & Woodhaven Blvds.

4. TOP THREE PRESSING ISSUES OVERALL

Queens Community Board 4

The three most pressing issues facing this Community Board are:

Affordable housing

The ongoing problem of overdevelopment continues within CB4Q. It is not uncommon that older housing stock, (one and two-family homes) are demolished and replaced with new buildings that house three and four-family homes. The current levels of service and infrastructure can no longer absorb the additional housing units. To secure the future stability of CB4Q, careful consideration must be given to the zoning of our community.

Schools

The over-usage of already limited City services will only continue to have a detrimental effect on our youth population. Overcrowded schools are everywhere as are after-school programs, and the libraries within our vicinity are used far beyond capacity. In the wake of Covid-19, remote learning is still in its infancy stages, and the general concern is that as it stands, its effectiveness is questionable. The City is unprepared to handle public health crises, and it is evident in our schools now more than ever, when the student to teacher ratio is so disparate.

Social services

The City's overall stance on Community Board processes is normally viewed as "let's focus on the end result, and not question how their processes work" without realizing just how much work goes into our daily functions. This is no longer acceptable. Boards rely heavily on City Council and Borough President appointed volunteers, but are often understaffed. Items including, but certainly not limited to: yearly Needs statements, Public Hearings, and committee meetings, are just a portion of the City Charter requirements for board volunteers to review, generate, and manage. The constituents of CB4 require multiple needs and services, yet one of the most pressing issues that our district is confronted with is an information gap that exists between constituents and the services meant to benefit them. Boards' 2-3 staff members are simply not enough to organize events and address constituent needs. As one of the most densely populated districts in the city, our board requires additional funding to expand our organizing capacity by hiring additional staff. An overall increase to our Operating Budget should be considered, and should not come in the form of a temporary City Council geared toward "empowering" the Boards. By growing our staff, we can work to close this information gap and positively impact our community by informing them of issues, resources, and opportunities for development. Boards are considered to be the City's front line of defense; we manage countless constituent issues, zoning variances, public meetings, and generation of yearly Needs Statements. With such important items on the backs of Boards, fully funded public workshops/presentations on what exactly Community Boards do should be ABSOLUTELY MANDATORY, and not just left to each CB to handle at their own accord. Mayoral campaigns in favor of Community Board term limits (among others) were sneakily sold to a public who often had no idea what it was voting for, and the current Administration shows zero intent on once and for all being transparent on the importance and functions of Community Boards. Despite this heavy responsibility, staffing for many CB's is grossly inadequate for the amount of work output, causing many of them to resort to interns and volunteers as a primary source of help.

5. SUMMARY OF COMMUNITY DISTRICT NEEDS AND BUDGET REQUESTS

HEALTH CARE AND HUMAN SERVICES

Queens Community Board 4

Most Important Issue Related to Health Care and Human Services

Services to reduce or prevent homelessness

Homelessness and housing insecurity are, more than ever, pressing issues in our district. Many of our residents are at risk of entering the shelter system. We are seeing an increase in individuals sleeping in our parks and streets in the wake of the COVID-19 pandemic. Hotels being used as shelters is simply not a solution, nor a viable bandage for a problem that is not being handled at the root. Affordable housing developments, programs geared to assisting the homeless, and financial assistance programs are just some of the potential solutions. Hotels are supposed to be commercial establishments geared towards promoting tourism. NYC is considered by many to be the greatest city in the world. The borough of Queens is at the top of the list of tourist destinations within our country. The current financial crisis, specifically in the wake of the pandemic will not be solved unless tourism reestablishes itself, and homelessness is given a more viable solution.

Community District Needs Related to Health Care and Human Services

Needs for Health Care and Facilities

Community Board 4Q (CB4Q) is home to Elmhurst Hospital Center, a trauma center within the heart of Queens that sees a tremendous amount of patients spanning the entire borough. While the hospital has been the recipient of several upgrades and expansions over the last few years with more to come, the truth is that it is still the only trauma center within the immediate reach of our communities. Urgent care facilities throughout the district are indeed a welcome addition as many constituents see these facilities as a cheaper, quicker alternative to the negative stigmas associated with an actual hospital. Although these facilities have gained popularity, the fact remains that the residents of the surrounding neighborhoods of Elmhurst, Corona, Maspeth, and Glendale are still in need of an actual hospital. Urgent care facilities are not made to replace hospitals, but to work in conjunction with them. We will continue to support public campaigns emphasizing the importance and the need for quality health insurance and preventive measures. Emphasis must be put into providing this information in multiple languages.

Specifically, in the wake of, and during the current epidemic, Elmhurst hospital was clearly underfunded, understaffed, and overwhelmed, and was clearly unprepared to handle the sudden influx of the largely undercounted population. Funding for this facility is absolutely imperative as we have proven that we are unable to sustain another emergency public health crisis.

Needs for Older NYs

While Corona has seen new senior living facilities (HANAC) as of late, sections of the district specifically in Elmhurst are in need of affordable senior housing. Exorbitant rent and overdevelopment throughout our community are leaving many seniors displaced with no place to turn. Waiting lists on housing take years to move, and seniors are left with little to no choice as they wait for a spot to be available. Funding is sorely needed to identify and obtain property to construct such a facility.

Needs for Homeless

With the number of hotel shelters showing up in our communities, the general consensus within our neighborhoods is that this idea is simply not a solution. Hotels are often built in neighborhoods that are heavy on tourism and foot traffic with the intention of capitalizing on visitors to our communities, yet many of our hotels operate with 100% capacity for homeless individuals. While we fully understand that nobody should be homeless and that it can happen to anyone, this initiative was not well thought out as several shelters have multigenerational families in them. Communities are often sneakily informed at the last

minute about new hotels that have already been filled to capacity with homeless individuals. Discussions on proper solutions are rare, and this initiative does little but fill the pockets of hotel operators with no accountability being shown by the Administration towards our communities.

Needs for Low Income NYs

As New York City continues to experience the current pandemic, the needs of our low income residents are more evident than they ever have. Lack of proper medical insurance, proper housing, and lack of unemployment benefits or stimulus packages to our undercounted residents led Elmhurst and Corona to be epicenters within an epicenter. The high death toll and understaffing of our hospitals coupled with evictions due to lack of income were at an all time high in NYC, with an emphasis on the already underserved, and undercounted population of CB4Q.

Initiatives to create a balance of benefits for all residents, officially counted or not, should be heavily scrutinized as no viable solution exists. We are in full support of the ongoing Fair Fares program, and will continue to be at the forefront of bridging the gap between the undocumented population of our communities, and those who receive full benefits and income.

Capital Requests Related to Health Care and Human Services

Priority	Agency	Request	Explanation	Location
4/39	HHC	Provide a new or expanded health care facility	<i>With the former St. John's Hospital now closed, the residents of South Elmhurst and its surrounding vicinity are in need of a medical facility. Elmhurst Hospital is operating beyond capacity, and is struggling to keep up with the demand. The need for a medical center in the neighborhood of South Elmhurst cannot be overlooked.</i>	
7/39	HHC	Provide a new or expanded health care facility	<i>In the wake of the Covid-19 pandemic, the need for alternate/additional medical facilities cannot be overlooked. The mental health toll (depression, suicide, anxiety, etc.) during the current pandemic has brought to light issues that are often neglected, and underserved. Now more than ever, we are requesting a rehabilitation center within the confines of Community Board 4 in which drug & alcohol counseling, mental health, and physical therapy services.</i>	
22/39	DFTA	Renovate or upgrade a senior center	<i>With the growing, aging population within CB4, the need for an assisted living facility cannot be overlooked. While Corona does in fact have such a facility, the area of Elmhurst does not. Requesting that resources be allocated to obtain property, and build such a facility to house the senior population of South Elmhurst.</i>	
30/39	DHS	Other capital budget request for DHS	<i>Breaking Ground currently operates via 4 outreach teams in Queens 24/7/365 (in all weather), as well as a case management staff that participates in client transports to medical appointments, housing appointments, housing placements, etc.,. One of their biggest needs is vehicles. While the agency does have a fleet, vehicles' life spans are shorter than average since their mileage racks up so quickly. Requesting funding be allocated to an increase in vehicles to continue providing this very necessary service.</i>	

Expense Requests Related to Health Care and Human Services

Priority	Agency	Request	Explanation	Location
----------	--------	---------	-------------	----------

3/35	DOHMH	Animal and pest control requests including reducing rat and mosquito populations	<i>There is a proliferation of rats being seen throughout the district. Funds are being requested to continue programs such as Rat Academy geared towards raising public awareness.</i>
4/35	DOHMH	Other programs to address public health issues requests	<i>The current Covid-19 crisis unfortunately proved how woefully unprepared we are as a city to address emergency public health crises. The measles outbreak of 2018 which lasted until August 2019 cost the city over \$6 million dollars with over 500 New York City employees deployed. This further emphasizes that the DOHMH was grossly understaffed. It is imperative to the health of our city to increase funding for DOHMH so that they can increase staffing levels, as well as produce more literature to address the growing anti-vaxxer movement.</i>
17/35	DOHMH	Animal and pest control requests including reducing rat and mosquito populations	<i>With mosquito-borne illnesses such as Zika, and West Nile within our communities, funding request would entail more staffing, and the continuation of public awareness campaigns to teach prevention in multiple languages. Our public plazas and abandoned properties are particularly vulnerable to rats. Requesting funding to increase awareness, and mitigation of pests (rats and mosquitoes) throughout the community.</i>
18/35	DOHMH	Create or promote programs for education and awareness on preventing chronic diseases including quitting smoking, nutrition, physical activity, etc.	<i>The communities of Elmhurst and Corona both see farmers' markets, and several campaigns geared towards condoning walking, and riding vs driving. Our communities would like to continue to see expansions of programs (WIC at farmers' markets, bike helmet giveaways, health benefits, etc.) Material and outreach should be emphasized in multiple languages conducive with the communities they are trying to reach.</i>

24/35	DHS	Provide rental assistance/vouchers for permanent housing	<i>With the proliferation of hotel shelters throughout the city, the need for services to get our residents out of shelters should be more heavily emphasized. Family shelters within the district currently house multi generational homeless families. The cost of housing these families in shelters/hotels far exceeds the cost of permanent housing. Funding should instead be allocated to preventative programs, and those geared towards removing people from the system. The Adopted Budget Register for FY21 stated that this request had already been funded, however more transparency delineating exactly where and how these funds were allocated would be appreciated.</i>
26/35	HRA	Provide Metrocards to help low-income New Yorkers get to work and around the City	<i>With the ridership at many of our stations as high as 17 million riders per year for Roosevelt Ave., and as high as 6.8 million for Woodhaven Blvd, it is obvious that our residents are using mass transit as a means to get around. The Fair Fares program emphasizes that the income throughout the district reflects a need for continued support to the program.</i>
27/35	DFTA	Enhance programs for elder abuse victims	<i>Requesting funding to expand Elder Abuse Prevention programs throughout the district.</i>
35/35	HRA	Improve the delivery of emergency food and shelter in case of a disaster	<i>Local Law Int 2057 - 2020 is a Local Law that requires relevant city agencies to develop a plan ensuring that students have access to school meals during emergency situations resulting in school closure. During the Covid-19 pandemic, many of our low income households depended very highly on food pantries to sustain them. Many of our students however were/ and still are in need of daily meals as they would normally receive during normal school hours.</i>

YOUTH, EDUCATION AND CHILD WELFARE

Queens Community Board 4

Most Important Issue Related to Youth, Education and Child Welfare

School and educational facilities (Capacity)

To date, School District 24 (SD24) remains one of the most overcrowded in the city. We will continue to support the Department of Education and the School Construction Authority (SCA) in their efforts to identify additional new sites for schools. The current pandemic coupled with the projected undercount of the 2020 Census are factors that should be looked at when discussing our current schools' capacity. The high student to teacher ratio of our schools is ever more evident in the wake of the Covid-19, in which teachers are often holding virtual meetings for classrooms in excess of 25 - 30 students causing latency issues, distractions, and overall insufficient education for our children. Remote learning is ineffective as it simply emphasizes how unprepared we are in moments of crisis, and will continue to be unless we provide more facilities, and in turn staff them correctly. While efforts to provide households with tablets, free internet, etc. are a step in the right direction, far too many issues are still evident as parents must return to work, and often use schools as makeshift daycare. Compatibility issues with tablets and I pads have led many households and teachers alike to agree that personal Windows-based desktop computers would be a more viable, and more universal solution at the same cost as the tablets.

Community District Needs Related to Youth, Education and Child Welfare

Needs for Youth Education

The lack of early childhood services and parent services in our district continues to be a cause for concern. In the wake of the Covid-19 pandemic, more than ever, the need for mentoring, homework help, counseling, and overall social networking is evident. In addition to the allocation of funds for after school programming, the need for a multi-purpose community/recreational center is a request that our board has held onto for some time. Such a center would provide the youth of CB4Q with the social skills required for their growth. Communal activities such as sports, arts and crafts, and after school workshops are just a few of the different programs that could be offered at such a facility, especially in a day where social media, smartphones, and video games reign above all else. Our youth lacks basic social skills that can only be obtained through communal activities and physical, social contact with each other. For this reason, our constituency is asking that acquisition of land, and furthermore, the construction of an intergenerational (seniors and youth under one roof) and/or after school center within our district be looked into.

Needs for Youth and Child Welfare

With the expansive growth of immigrant families with young children in our district, there is a great need for Early Childhood Services for children Birth to Three. The services that we are in need of are quality infant-toddler care and early childhood education provided by trained professionals with a culturally sensitive and linguistically sensitive focus. Currently, there is an insufficient number of Early Childhood centers in our district that service Infants and Toddlers and their parents and we are in desperate need of facilities to provide the space to render such services. According to a recent Unicef report on early childhood development, an economically disadvantaged child has the opportunity to thrive socially and academically when provided with early intervention and early childhood services. In addition, the report states the following: • Brain development is most rapid in the early years of life. When the quality of stimulation, support, and nurturance is deficient, child development is seriously affected. • The effects of early disadvantage on children can be reduced. Early interventions for disadvantaged children lead to improvements in children's survival, health, growth, and cognitive and social development. • Children who receive assistance in their early years achieve more success at school. As adults, they have higher employment and earnings, better health, and lower levels of welfare dependence and crime rates than those who don't have these early opportunities. • Efforts to improve early child development are an investment, not a cost. Available cost-benefit ratios of early intervention indicate that for every dollar spent on improving early child development, returns can be on average 4 to 5 times the amount invested, and in some cases, much higher.

Capital Requests Related to Youth, Education and Child Welfare

Priority	Agency	Request	Explanation	Location
9/39	SCA	Provide a new or expand an existing high school	<i>The lack of high schools within the district continues to be a cause for concern. Elementary and Middle Schools while numerous are overcrowding, and the majority of our students must travel outside of their communities for high school. A new high school would help our constituency stay closer to home and will ease overcrowding within SD24. With social distancing, and the current epidemic, the student to teacher ratio is simply too high for proper remote learning.</i>	
26/39	SCA	Provide technology upgrade	<i>Students within our district strongly need tech upgrades such as whiteboards, laptops, calculators, tablets, etc especially with the current pandemic, and remote learning. We are aware that the newer schools came with a lot of these tech upgrades already, so focus should be put towards the remaining pre-existing schools. Additionally, conversations should begin towards Windows based desktops vs the more sensitive, less compatible Mac based tablets.</i>	
CS	DYCD	Other capital budget request for DYCD	<i>The low allocation of funds within CB4 is surprising considering SD 24 is currently the most overcrowded in the city. There is a need for after school programming for adolescents grades 6-8 who at this stage in their lives need more aggressive mentoring and help with school work especially with the current pandemic, and the effects that staying indoors for extended periods of time can have on our youth's psyche.</i>	

Expense Requests Related to Youth, Education and Child Welfare

Priority	Agency	Request	Explanation	Location

32/35	DYCD	Provide, expand, or enhance after school programs for elementary school students (grades K-5)	<i>There is a tremendous need for after school programs for elementary school students grades k-5. At this early stage the students' lives, it is important to have enriching programs that are both educational and fun. Said programs will also help parents who have limited work hours, will help the children with social skills, and give students an advantage as they progress in their education.</i>
-------	------	--	--

33/35	DYCD	Other youth workforce development requests	<i>Our district would benefit greatly from having a youth center that would support our youth and their families. Educational programs, mentoring, homework help, extracurricular activities, and counseling are just some of the services that the youth within our district are in desperate need of. Seeking funding to obtain land, and construct a center within the confines of our district.</i>
-------	------	---	---

PUBLIC SAFETY AND EMERGENCY SERVICES

Queens Community Board 4

Most Important Issue Related to Public Safety and Emergency Services

Public safety facilities (precinct, fire houses, etc.)

Since 1988, the Community Board has put the renovation of the 110th Precinct at the very top of its yearly capital requests. For approximately 7 decades, this facility has seen little to no improvements to its overall infrastructure. Both within and outside the facility, structural crumbling, loose bricks, and flooding are common. As one of the busiest precincts in Queens North, with close to 250 uniformed and civilian personnel (and growing), this structure is a potential danger that is unfair to those tasked with keeping our communities safe. Additionally, the community has been requesting a proper parking facility for the 15+ marked and unmarked vehicles being stored along the residential block surrounding the precinct. In a district where parking is at a premium, we should be looking to provide parking for our officers all the while returning parking spaces to the residents of the surrounding community. Years back, in conjunction with Community Board 4, Congressman Crowley (CD14), State Senator Jose Peralta (SD13), and Assemblyman Francisco Moya (AD39) the issue was brought to light, and concerns were forwarded to the attention of the Governor's and Mayor's offices; to date, however, there has been no known movement on this proposal. We are requesting that an NYPD satellite station be installed on the Western side of Elmhurst near both the Queens Center and Queens Place Malls along Queens Boulevard.

Community District Needs Related to Public Safety and Emergency Services

Needs for Public Safety

Roosevelt Avenue continues to be a point of contention, and much needed attention. Unlicensed street vendors, gang activity, rampant crime, and quality of life issues along the commercial corridor are simply getting out of hand.

There must be a conversation to find a happy medium between law enforcement, the community, and lawmakers to help us find a solution to a growing problem with no clear end in sight. The potential implementation of a task force exclusive to this commercial corridor would be a welcome addition and one that has been discussed over several conversations but has made little headway thus far. Throughout the district of Community Board 4, specifically in the 110th precinct, we have seen a massive increase in the amount of illegally parked cars displaying "for sale" signs as well as cars without state paper license plates on them. While we continue to be at the forefront in bringing these vehicles to the attention of the agencies responsible, there simply isn't enough manpower, and laws are far too lax. Vehicles are being blatantly parked along streets, and in many cases, those who do have plates only display them in the rear of the vehicle enabling them to use the vehicle's second plate on another one. The majority of these vehicles are being sold by local repair shops who have accepted the low summonses as the norm while they continue to sell the vehicles. The Dept. of Sanitation can 'tag' a vehicle with no plates, but due to the multiple-day turnaround time, the vehicle is moved far before enforcement is able to impound it. The low cost of the summonses is simply not enough to deter the sales of these vehicles.

Needs for Emergency Services

The current pandemic to which we were grossly, and continue to be unprepared for was proof that our emergency services, specifically hospitals are underfunded. Every emergency service was strained to its maximum, yet despite best efforts, simply did not suffice. As we have mentioned in previous years, the increase of population and overdevelopment in CB4Q is taxing our emergency services. We have proven that the current level of funding is not adequate for the maintenance/rehabilitation of our emergency services as a whole. In addition, we want to make sure that our emergency services providers have all of the equipment that they need in the case of an emergency (i.e. generators in the case of a blackout, better communication equipment to coordinate efforts, etc.). We are also concerned that the existing ERS system is being neglected. In a time when most households no longer have landlines, ERS boxes provide a crucial ability to summon emergency services in situations where every second matters. The Community Board is opposed to the removal of the existing boxes and asks that the cast iron bases be retained and retrofitted to accommodate the more modern push-button system onto the existing base.

Capital Requests Related to Public Safety and Emergency Services

Priority	Agency	Request	Explanation	Location
3/39	NYPD	Renovate or upgrade existing precinct houses	<i>The building now housing the 110 Precinct is inadequate. The precinct house is in a densely populated residential area with limited street access and no viable parking for police vehicles. This project was projected for funding since FY 2013, but has since made no progress. Renovation with the possibility of an underground parking should be considered. to this facility which could double as an emergency shelter.</i>	94-41 43rd Avenue
8/39	NYPD	Provide surveillance cameras	<i>Several sectors within the district are in need of added security measures, specifically the corners spanning the entire stretch of Roosevelt Avenue, the adjoining Junction Boulevard, and a high-crime section of 57th Avenue between 99th Street and Junction Blvd. / (41st Avenue) 41 Avenue between National Street and 104th Street. Requesting that surveillance cameras be funded</i>	
13/39	FDNY	Rehabilitate or renovate existing fire houses or EMS stations	<i>Requesting funding for complete analyzation, and reparation of firehouses within the district. Specifically, we are seeking funding for the renovation(s) of 1. 287/Ladder 136/Battalion 46 2. Division 14/Engine 324. 3. Engine 289/ Ladder 138.</i>	
17/39	NYPD	Add NYPD parking facilities	<i>For years, Community Board #4Q has requested dedicated vehicle parking for the 110 Precinct vehicles. Currently no off street parking is available for NYPD vehicles. The existing precinct, if eventually renovated may have potential for underground parking implemented into its redesign. Such a facility could double as a shelter in the case of public crises/emergencies. Properties adjacent to the precinct should be a main priority including the series of repair shops west of the precinct that have been impeding precinct traffic for some time.</i>	

29/39	NYPD	Provide a new NYPD facility, such as a new precinct house or sub-precinct	<i>In the wake of the ongoing pandemic, the Queens Center and Queens Place Malls were both put on a watch list for potential looting/riots. Thankfully, these events did not materialize as predicted, but the fear of our community being overwhelmed due to lack of a satellite precinct was a clear concern. Despite department recommendation that this request not be funded in our FY21 budget register, a satellite precinct/ mobile unit must be considered for the western side of Elmhurst, specifically the commercial corridors surrounding the Queens Place, and Queens Center malls.</i>
-------	------	--	--

Expense Requests Related to Public Safety and Emergency Services

Priority	Agency	Request	Explanation	Location
16/35	FDNY	Expand funding for fire prevention and life safety initiatives	<i>The FDNY Fire Safety Educational Unit needs additional funding to provide smoke detectors and carbon monoxide detectors for distribution to the public. This is a public service that will save lives.</i>	
21/35	FDNY	Other expense budget request for FDNY	<i>The majority of the firehouses within our district already have generators in case of a power outage. However, Engine 289 in Corona is still operating with an above ground, multiple unit setup. Requesting funding to provide an in ground generator for this heavily utilized station.</i>	97-28 43rd Avenue

CORE INFRASTRUCTURE, CITY SERVICES AND RESILIENCY

Queens Community Board 4

Most Important Issue Related to Core Infrastructure, City Services and Resiliency.

Recycling facilities and services

Throughout the district, our constituency has seen an increase in the amount of garbage being strewn throughout our streets. Abandoned lots covered in garbage are common ground, and homeowners and businesses alike tend to overlook laws regarding the cleanliness of their sidewalks. Changes to recycling laws are constant, and new programs such as electronic/textile/compost are confusing and are a change that many of our constituents have not yet grasped. Informational campaigns in multiple languages for public education on recycling and responsibilities of property owners are a constant request heard throughout our constituency. It has also been noted that DSNY enforcement tends to be lax in some cases, and overly aggressive in others due mostly to the fact that several agents have openly stated that they themselves do not know the actual laws. Dialogue between DEP, and DSNY, and DSNY Enforcement (separate division) must be made crystal clear to form a more cohesive plan to keep our streets clean. Funding and emphasis should be put into public information campaigns designed to educate our constituents and street vendors alike. These campaigns must be in multiple languages conducive to the communities they serve, and be a year-round effort to be most effective, and not only at the inception of these programs.

Community District Needs Related to Core Infrastructure, City Services and Resiliency.

Needs for Water, Sewers, and Environmental Protection

Several corridors along CB4Q are in need of upgrades to their sewers. Basements along the commercial district of 82nd Street between Roosevelt Avenue and Baxter Avenue, as well as homes along the south side of 111th Street as referenced in our priorities, suffer from sewer backups, and ponding issues along their streets.

A general upgrade of our infrastructure should take precedence to meet current and future demand. We continue to undergo the issue with the rain garden initiative (formerly referred to as bioswales) brought forth by the Department of Environmental Protection (DEP). When the rain garden program was unveiled in the district in 2013, it was received with trepidation as concerns were immediately brought up with regards to the accountability of rain garden maintenance. While the Community Board was in favor of the overall concept behind them, we feared that these rain gardens would quickly become garbage pits. DEP does its best to rectify the issue, but rain gardens throughout the district can go months with no cleanup on behalf of the agency. Staffing is simply not enough. A general increase to staffing specifically towards the maintenance of the gardens would be of huge benefit to our community. A summons structure should also be more firmly set in place as rules behind rain gardens are clearer now, yet many of our constituents and street vendors show little regard to the importance of the gardens often sabotaging them, and selling their wares in the existing tree beds.

Needs for Sanitation Services

NYC has suffered from several snowstorms over the last few years, and while DSNY did its best to work with existing resources, ultimately a lack of manpower and vehicle egress made snow removal a difficulty. In the wake of the current pandemic, concerns over snowplows unable to properly sweep due to restaurant extensions have been brought to light as well as the potential dangers of snow accumulation on top of these structures.

Additionally, budget increases should reflect the increase in private housing units in the CB4Q area, and additional vehicles as well as increased maintenance on the existing ones should be more aggressively pursued. More garbage cans are simply not a viable solution when vehicles and personnel are in such short supply. We are also seeking a more proactive campaign to be implemented to educate our residents on the laws and rules for recycling. Too many residents in CB4Q do not understand the constantly changing rules and regulations of recycling and property maintenance, specifically with regards to electronic recycling, textile recycling, composting, and rain gardens.

Capital Requests Related to Core Infrastructure, City Services and Resiliency

Priority	Agency	Request	Explanation	Location
11/39	DEP	Other capital budget request for DEP	<i>As referenced, and as been requested in previous years, the section of 111th Street off 43rd Avenue and adjacent to PS28 has been flooding for decades with no assistance, or permanent solution. This presents a danger to the multitude of school buses, students, and patrons of the Hall of Science adjacent schools, and Flushing Meadows Corona Park (FMCP). Requesting that streets be surveyed, and considered for repair.</i>	111th Street 46th Avenue 47th Avenue
36/39	DEP	Evaluate a public location or property for green infrastructure, e.g. rain gardens, stormwater greenstreets, green playgrounds	<i>Requesting more staffing for the maintenance of the recently implemented Green Infrastructure initiative. Currently DEP staff is scheduled to maintain and clean these sites on a weekly basis, but a majority of our sites go for weeks, possibly months with no visits. Current staffing is simply not enough. Requesting funding to meet current and future demand.</i>	
CS	DEP	Evaluate a public location or property for green infrastructure, e.g. rain gardens, stormwater greenstreets, green playgrounds	<i>Reconstruction of streets in the surrounding area of 41st Avenue and Roosevelt Avenue</i>	41st Avenue Roosevelt Avenue Roosevelt Avenue

Expense Requests Related to Core Infrastructure, City Services and Resiliency

Priority	Agency	Request	Explanation	Location
----------	--------	---------	-------------	----------

6/35	DSNY	Other cleaning requests	<p>We support the ACE program that works as a supplement for existing street cleaning services. Funding has allowed the program to effectively canvas several commercial and residential sectors of the district, and assist with cleanup (sidewalk sweeping, scraping of utility poles, garbage mitigation) Currently, the program covers: - Diversity Plaza - 104th St. from Roosevelt to Corona Aves. -108th Street from Roosevelt to Corona Aves . -111th St /Roosevelt Station - William F. Moore Park Requesting that the Ace Program be considered for: 1. Broadway from Cornish Ave. to Queens Blvd. 2. Queens Blvd. E/B and W/B between Grand to Horace Harding Expwy. 3. Corona Avenue (91st Pl. to Queens Blvd) 4. Grand Ave from QB to Haspel St.</p>	
13/35	DSNY	Increase enforcement of illegal posting laws	<p>Several commercial corridors and their surrounding areas are infamous for illegal postings on utility poles, walls, and construction fences. The entire stretch of Roosevelt Avenue from 72nd Street to 114th Street and its adjacent side streets are havens for these postings. Business owners do their best to remove these flyers, but with virtually no enforcement, it is a losing and discouraging battle. Postings vary from illegal apartment rentals, to vehicle sales to fitness classes. These forms of advertisement are dangerous, unjust, and often advertise illegal services. More stringent enforcement should be implemented.</p>	Roosevelt Ave 72nd St 72nd St
25/35	DSNY	Increase enforcement of dirty sidewalk/dirty area/failure to clean area laws	<p>Several areas of our district are seeing a substantial amount of garbage pile up, with little to no penalty to the property owners. Commercial corridors such as Queens Boulevard, Roosevelt Avenue, Junction Boulevard, Broadway, and National Street near Corona Plaza are infamously known for excessive littering, but enforcement is scarce. More over with the ACE Program in effect at several of these locations, enforcement should be more stringent on properties who have no reason to not maintain their sidewalks including adjacent tree pits.</p>	
31/35	DSNY	Provide or expand NYC organics collection program	<p>While neighboring districts of Rego Park, Glendale, and some parts of Jackson Heights already have the organics program, the neighborhood of Corona, and the majority of Elmhurst have yet to be a part of this successful program.</p>	

HOUSING, ECONOMIC DEVELOPMENT AND LAND USE

Queens Community Board 4

Most Important Issue Related to Housing, Economic Development and Land Use

Affordable housing creation

The communities of Corona, Corona Heights and Elmhurst is urgently in need of affordable housing to accommodate the expansion of growth we have seen in recent years. With the close proximity to bus and subway lines, many people desire to live here. Affordable housing must be brought in to our communities to keep these communities ideal places to live, work and raise a family. Community Board 4 is home to a large immigrant population. New immigrants are being victimized by landlords and property owners. Because families are charged high rents, two or more families share apartments causing severe overcrowding and unhealthy conditions which also overburdens our infrastructure and sewer system. Housing prices must reflect the communities' needs to help families grow and flourish and be self-sufficient. Not only is the working class families affected by the high rents but also seniors on a fixed income and young adults who wish to begin their lives by living independently. Seniors must choose between food, medicine, and rent to exist. Young adults who wish to branch out on their own cannot afford to do because of escalating rents and the dire need for affordable housing. Developers reach out to the Board office constantly requesting variances where one and two family homes have been torn down to build multifamily homes. Although they offer some apartments at "affordable" rates, by our community's standards, they are out of reach for our residents. The median income for community residents is \$45,661. More guidelines in line with the community is needed on how those "affordable" rental rates are arrived at and a true projection cast geared to the reality of the families living in our community. Significantly, families are struggling to pay bills and with the high unemployment rate workers depend on free breakfast and lunches for their children while trying to keep a roof over their head. Food pantry lines in our community stretch for blocks. The pandemic has hit our communities particularly hard with no relief in sight. Tenants now face the prospect of eviction with no place to go, no savings, and no assistance from the government. Affordability is key to keep residents in their apartments. Community Board 4 is committed to the well-being of its residents and is optimistic guidelines will be forthcoming to ensure housing stability for all.

Community District Needs Related to Housing, Economic Development and Land Use

Needs for Land Use

Existing one-story buildings are being replaced with high-density buildings at a rate too fast to be kept up with. A planned balance between residential and commercial buildings is sorely needed. For far too long, we have operated under the careless mentality of "when it is needed, we'll deal with it." The intricacies behind infrastructural projects combined with a lack of funding and staffing have led our agencies to operate with little to no time to actually handle issues on a proactive basis. Community services and utility companies are increasing their services as the need arises, and not before. The fact is that large sections of Elmhurst and Corona were designed as a tightly woven network of 1-2 family houses whose streets are far too narrow, and simply not prepared to handle such an influx of tourism in such a short amount of time. With close to 75% of the district's makeup being residential, it is evident that people want to live here. What is a constant problem for us, however, is the misconception that in order to solve the problem, more housing should be created. Throughout the year, variances are constantly being brought to Community Boards for review thus converting 2 and 3 family homes into multi dwellings of 15 or more families. The growth is blatantly evident, yet very little emphasis is being put into actual upgrades to our streets or sewer systems. With the average median household income at \$45,661 and 27% of the district's households living below the poverty line, there should be more conversation and initiatives geared towards not only providing affordable housing but also taking into consideration that housing initiatives require substantial infrastructural changes especially in neighborhoods such as Corona and Elmhurst that have seen a tremendous surge in population within the last 5-10 years.

Needs for Housing

The lack of NYCHA housing within our district is a cause for concern. With the average median household income at \$45,661 and 27% of the district's households living below the poverty line, there should be more conversation and initiatives geared towards providing affordable housing. Careful consideration must be made into the locations of such developments as substantial infrastructural upgrades are often needed.

The neighborhoods of Corona and Elmhurst already suffer from a lack of parking and have seen substantial increases in traffic. While we have a tremendous need for such facilities, the inherent inconvenience of putting them wherever possible can be more detrimental than helpful. We support open dialogue in the obtaining of land and eventual construction of such a facility within our district.

Needs for Economic Development

The government cannot address all of CB4Q's district needs. Private capital and or government partnership may work together to revitalize our communities. This district needs additional Community Development Districts (CDD) banks and Community Development Financial Institutions (CDFI) to build affordable housing, grow businesses, produce jobs, create investments and opportunities to save and grow towards wealth. The unbanked and underbanked communities need tailored products to grow money rather than waste it on check cashing fees, etc. Citizens Committee for Children of New York's (CCCNY) research study revealed how severely underserved this district is as indicated by the below chart:

Table: Banks and Population Ratios by Neighborhood

Neighborhoods	Number of Banks	Number of Banks per adults per bank
Corona	2	22,055
East Elmhurst	1	16,745
Elmhurst	11	6,116
Elmhurst-Maspeth	2	5,565
Jackson Heights	21	3,973
North Corona	3	13,376
Asset Assessment Area	40	6,571
New York City	1,757	3,889

Note: This is estimate reflects only the portion of the Elmhurst-Maspeth neighborhood that overlaps Queens Community District 4.

Furthermore, the US Congress in 1977 passed the Community Reinvestment Act (CRA) to stop redlining. It is the practice of Banks' denying credit, mortgages, business loans in neighborhoods coded in red on maps. Banks did not open branches in those red districts. Banks within the area received deposits from local businesses and residents but denied them credit. Those districts comprised low to moderate-income people, minorities, and immigrants living in older stock homes. CRA regulations prohibited redling and encouraged banks to offer private capital to rebuild, stabilize, and vitalize low and moderate-income, minority, and immigrants communities. Nevertheless, CB4Q remains underserved, moreover, New York City Banking Commission and New York State Finance have designated Corona a Community Development District underserved area on March 1, 2005, fifteen years ago. Therefore, we are requesting New York City EDC and New York City Banking Commission to study and develop additional BDD (Banking Development District) for the CB4Q area to encourage and assist banks in opening branches in this traditionally underserved area. This will promote long-term economic development, business and job growth, community revitalization, and provide savings accumulation.

The eclectic nature of Elmhurst and Corona combined with the astronomical prices on rent for 'brick and mortar' establishments has led Community Board 4 to be a mecca for street vendors. The sheer amount of nationalities, cultures, and craftsmen within the district have encouraged those seeking employment to establish themselves as successful street vendors. The concern, however, is over the high amount of

vendors that flood areas where commercial traffic is extremely high, and the negative impact this can have on brick and mortar businesses. Laws are in effect that helps to govern the distance between street vendors and physical establishments selling similar wares, but complaints to agencies and fights between vendors are far too numerous to log. While it is universally understood that many street vendors are in fact tax-paying businesses, there should be an understanding that inspections of vendors (food or otherwise) be far more consistent. Furthermore, compliance and safety education should be implemented before enforcement specifically in heavily utilized commercial corridors such as Corona Plaza, Roosevelt Avenue, Junction Boulevard, the Queens Center Mall, and the area within the purview of the 82nd Street Business Improvement District (82nd Street Partnership).

Capital Requests Related to Housing, Economic Development and Land Use

Priority	Agency	Request	Explanation	Location
16/39	EDC	Build or expand affordable work or research lab spaces	<i>As businesses begin to reopen in the wake of COVID19, consideration should be put into small businesses that are the backbone of our local economy. Studies show that immigrants have a higher rate of business ownership than non-immigrants, with roughly one out of ten immigrant workers owning a business. While our community has made significant progress supporting street vendors (through community based organizations and local elected officials supporting positive legislation), we still lack a clear pipeline for street vendors to open a small business. Our community would benefit from funding allowing us to establish a small business incubator that provides mentorship, training, and education specifically regarding post epidemic safety protocols.</i>	
18/39	HPD	Provide more housing for extremely low and low income households	<i>Community Board 4 has seen a very steady influx of new residents in the last few years, and will only continue to grow at a steady pace. The lack of affordable housing is encouraging "shacking up" in which large families are living out of single rooms and illegally converted basements. An Affordable Housing facility is desperately needed for both the convenience, and the safety of CB4's residents.</i>	
23/39	HPD	Provide more housing for medium income households	<i>Community Board 4 has seen a very steady influx of new residents in the last few years, and will only continue to grow at a steady pace. An emphasis throughout the district is being put into low income housing, however, financial burden does not pertain strictly to low income households. Requesting funding to survey, obtain land, and eventually build an affordable housing facility for medium range income within the district.</i>	
25/39	HPD	Other affordable housing programs requests	<i>While the Department of Housing Preservation and Development (HPD) provide loan programs the increased need for such programs can not be overlooked. Community Based Organizations (CBO's) such as Neighborhood Housing Services (NHS), do a great job in providing such services, but the demand for increased programs is exceedingly present specifically in low density (2-3 family) homes.</i>	

28/39	HPD	Provide more housing for special needs households, such as the formerly homeless	<i>With the homeless crisis sweeping throughout the city, many communities have been seeing an increase in the number of shelters popping up within their constituencies. As these shelters continue to increase, to avoid the homeless crisis remaining stagnant it is important that housing for formerly homeless as well as seniors be provided. Additionally, Special needs***</i>
34/39	DOB	Other capital budget request for DOB	<i>CB4Q takes in numerous complaints about unsightly, dangerous downed wires on a daily basis. Since each company maintains responsibility for its own line, it is very difficult to determine which company is responsible to service the problem. Downed lines can stay unserved indefinitely on our city streets. To the average person, there is no way to determine if a downed wire is high voltage or benign, which poses the key question of safety. Fallen wires can electrocute or cause fires. Our constituents should not be put in a position where their safety is at risk. Trained workers are needed to climb utility poles to perform maintenance Requesting access to an agency held accountable for this maintenance.</i>
38/39	HPD	Provide more housing for extremely low and low income households	<i>Tenant protection services are designed to preserve affordable housing by detecting and curtailing patterns and practices of landlord fraud. With the dramatic growth seen within CB4 our constituency is in need of extensive services that would help them to preserve their quality of life. Funding is being requested for expansion of these programs.</i>

Expense Requests Related to Housing, Economic Development and Land Use

Priority	Agency	Request	Explanation	Location
----------	--------	---------	-------------	----------

2/35	SBS	Other workforce development requests	<i>Several CBO's throughout the borough see thousands of clients on a weekly basis to assist with social services including, but not limited to courses on basic literacy, computers, ESL, etc. Many clients however cannot afford to take relevant courses, nor afford the supplies necessary to do so. Funding should be allocated to provide clients with stipends specifically geared towards assisting the less fortunate to better themselves without allowing financial burden to be a deciding factor in doing so.</i>
7/35	DOB	Address illegal conversions and uses of buildings	<i>According to data from NYC Open Data, so far the Department of Buildings has received 22,763 illegal conversion complaints, the top most common complaint. The second most common complaint is Work Without a Permit, which was the subject of 20,852 complaints. The third most common complaint is faulty single-use elevators with only 8,783 complaints. With numbers like these, it is quite obvious that illegal conversions and work without a permit are problems that are plaguing our city. Since 2018, illegal conversion complaints have risen 3,053, and work without a permit complaints have increased 4,587. In order to adequately and promptly address these issues, it is important that DOB receive funding to hire more code enforcement inspectors.</i>
8/35	SBS	Assist with on-site business compliance with City regulations	<i>Community Board 4Q is a mecca for street food. While we pride ourselves on the eclectic nature of our cuisines, the divide between street vendors and brick and mortar establishments is very clear. Many street vendors may not fully understand City laws. I.e.: illegal dumping of cooking oil/debris, significance of letter grades, proximity to stores, etc. The request is for specific emphasis to be put into workshops, awareness, and literature specifically geared towards street vendor laws; above all, these initiatives should be in multiple languages conducive with the communities they will serve.</i>

9/35	DCP	Study land use and zoning to better match current use or future neighborhood needs	<i>CB4Q is experiencing overdevelopment at an alarming rate. Existing one and two family homes are demolished and replaced with high density buildings that are out of character with the surrounding neighborhood. The existing infrastructure was built mainly for low density housing and the additional units place an undue strain on our fragile infrastructure. Requesting that DCP evaluate the current zoning in CB4Q taking into account the current state of our infrastructure, and identify areas where zoning changes would improve the quality of life for our constituency.</i>
12/35	EDC	Reinvest in the graffiti free removal program for private sites	<i>The district continues to see a spike in graffiti. Community groups in conjunction with several City agencies are doing their best to keep up via cleaning events and initiatives, but funding is still needed to expand on programs geared towards graffiti removal. Better yet funding can and should be allocated to programs geared towards replacing graffiti with murals designed by local community artists.</i>
20/35	SBS	Provide or expand access to capital	<i>Lack of banks within CB4 is a major cause for concern. (Stats from # of banks Queens vs other boroughs) https://neighborhoodtrust.org/2016/01/11/the-economist-features-neighborhood-trust-federal-credit-union-on-its-service-to-immigrant-community/ Neigh</i>
23/35	SBS	Conduct a commercial district needs assessment	<i>In the wake of the COVID-19 pandemic, small businesses were left with little help and knowledge as to what to do next. The obvious disconnect between our businesses and City agencies is a major cause for concern. In order to truly gain knowledge as to what these specific needs are, a needs assessment of CB4's most prolific commercial corridors is being requested. Corridors include: Junction Blvd. from Corona Ave to Roosevelt Ave, Broadway from Baxter Avenue to Queens Blvd, and Roosevelt Avenue from 82nd Street to 103 Street (Corona Plaza).</i>

28/35	DOB	Assign additional building inspectors (including expanding training programs)	<i>Covid** With more inspectors, In 2018, there were 165,988 permits issued by DOB, and in the first three quarters of 2019, 120,668 ,putting us on track to meet or exceed last year’s numbers. With the rapid increase in development, it is crucial that DOB has enough building inspectors and staff to adequately ensure the safety of the over 1.1 million buildings in NYC. In FY 19, the average response time for Priority B complaints was 11.4 days. While Priority B complaints aren’t life threatening, they can be indicators that something is unsafe. No matter what we say in an attempt to please the case for more funding, no one said it better than former DOB Commissioner Rick Chandler, who in a 2018 interview said “I think if we had ten times the resources..., we would still be just making a dent.”</i>
29/35	HPD	Provide emergency housing for households displaced by fires or City-issued vacate orders	<i>Our catchment area is densely populated with a wide variety of various ethnic groups comprised of children, adults and seniors. Funding is needed to provide assistance with emergency displacement as a result of fires or vacate orders. The Red Cross and NYCEM offer some assistance to those in crises by addressing immediate needs, but more is needed. During public crises, temporary centers for those affected are often set up locally, but the aftermath of disasters often linger for several months. CB4 is requesting an agency be formed designated with the immediate/temporary relocation assistance and advisory services in cases of crises..</i>
34/35	SBS	Other expense commercial district revitalization requests	<i>As small businesses begin to re-open post COVID, they will need to re-evaluate how to conduct business while adhering to new public health measures. For many of them, converting to digital advertising and shipping will be anything but avoidable. Many of the small businesses in our district have been in existence for decades and were able to survive under the old model, however due to a variety in language barriers and technological competencies, many business owners may need training to learn new marketing techniques in how to continue operating through a second wave and post pandemic.</i>

TRANSPORTATION

Queens Community Board 4

Most Important Issue Related to Transportation and Mobility.

Traffic safety and enforcement (cars, scooters, ebikes, etc.)

Most Important Issue: Traffic Safety Measures and Education While CB4 faces many challenges related to transportation and transit, one has emerged as an area of pressing concern. After a precipitous decline this past spring as a result of the COVID-19 outbreak, auto & truck traffic and pedestrian crowds seem to have returned pretty much to their pre-pandemic levels. Beginning a few years ago, but clearly accelerating since the spring, there has also been a marked increase in bicycle traffic and in the use of other, newer modes of micro-mobility: e-bikes, scooters & skateboards (both motorized & foot-powered), and mopeds now abound in our communities. As users of all these modes interact, dangers to all involved, especially pedestrians, have grown. CB4 has benefitted from safety improvements to Queens Blvd and from new bike lanes installed under the Big Jump program; we appreciate those. But we continue to witness widespread unsafe behavior on our streets and sidewalks. We encourage DOT to continue to review our streets and traffic patterns for locations where the vehicular and pedestrian flow can be made safer. We also encourage the increased use of traffic control signals employing the Leading Pedestrian Indicator, allowing pedestrians to enter crosswalks before cars can start to turn. Beyond even those measures, we would ask DOT to devise and implement a safety education program for children and teens, and to reach out to schools in and near our district with age-appropriate instruction as to how these youngsters can move safely on our sidewalks and streets. Several specific issues have been raised; these include: -dealing with crossings whose lines of sight are obstructed by parked cars, vans, and trucks - crossings without painted crosswalks -bicycle, e-bike, and micro-mobility safety: bells; lights and light-colored clothes at night; helmet use; awareness of vehicles' blind spots; sidewalk rules, and the reasons for them; the need for caution using shared space, especially roadways; rules of behavior in shared spaces We believe that safety education directed at the higher grades, and certainly by high school, should include discussion of safety measures and rules of the road when driving a motor vehicle.

Community District Needs Related to Transportation and Mobility.

Needs for Traffic and Transportation Infrastructure

Over the past few years, Broadway from Jackson Heights to Queens Blvd has undergone traffic flow and safety improvements. These improvements do seem to have had some positive effects on Broadway's traffic congestion. We have been impressed by the use of a bus-only traffic signal at Whitney Ave that gives buses a head-start on other vehicles when the light changes. Are there other locations in CB4 where this would make sense? We suggest that DOT take a look at Roosevelt Ave between 71st St and 83 St, and at all of Corona Ave and Junction Blvd. We note that there do continue to be problems with the traffic congestion on Broadway at 45th/Whitney Aves and at Woodside/Baxter Aves.

We are informed that the implementation of the Queens Blvd capital reconstruction and landscaping project is expected to begin soon. We hope that the City's current financial challenges will not delay this project. We also want to restate one concern as relates to the landscaping: it is clear that trees can grow well on the Queens Blvd medians between 50th Street and Broadway; however, east of Broadway/Grand Ave, the subway structure under Queens Blvd kills all the trees that the city plants on the medians. We hope that DOT is seeking an alternative planting plan for the portion of the boulevard east of Broadway. This is important if the project is to be viewed as a success in the long term.

There is a speeding problem at various locations throughout Board 4. We are requesting this year that DOT look specifically at National St and 102nd St between 43rd & Corona Aves and devise steps that can be taken to end the speeding problem in this neighborhood.

We have for years had a recurring problem at Broadway and 45th Ave of casino buses idling, standing, and loading passengers. This location is on the edge of an extraordinarily heavily used park/playground. Besides the exhaust problem, this wall of buses creates a devastating visual barrier for users of the park. We seek DOT's assistance in devising a way to permanently, entirely prevent these buses from using this blockfront.

Needs for Transit Services

The residents of Board 4 are heavily dependent on our mass-transit system. Our first priority for NYCT is our continuing support for their announced plan to rehab the 7 train subway stations along Roosevelt Ave, serving Corona, Elmhurst, and Jackson Heights. We have seen the magnificent job the MTA did on the N-line stations along 31st St in Astoria. We would be extremely happy to see something like that done along Roosevelt Ave. It is our hope that **ALL** the stations on this segment of the line that have not been recently rebuilt will be included in this multi-station project. If the MTA is going to be undertaking rehabs of the Roosevelt Ave stations, we strongly urge you to include an additional means of egress from the Flushing-bound platforms at the 82nd, 90th, and 103rd St/Corona Plaza stations. Prior to the pandemic this year, we saw very serious platform crowding at these stations during the evening rush hours. Since you will have construction projects at these stations, we urge you to design and construct an additional platform-to-street exit stair at each.

CB4 would also encourage the MTA to undertake ADA access projects for as many of these stations as feasible at the same time as the station rehabs, co-ordinating the construction and service disruptions so as to minimize inconvenience to the riding public.

We further call on the MTA to undertake as soon as possible an ADA access project at the Woodhaven Blvd station on the M & R lines. This station serves two major shopping malls and is at the nexus of a large number of bus lines serving many neighborhoods in central and western Queens. Disabled people getting off buses here find themselves simply out of luck in any effort to get onto the subway.

Finally, in past years we have strongly supported the MTA Capital Plan's budget item for the re-opening of the LIRR Elmhurst Station on the Port Washington Line. We were extremely disappointed to learn that the funds allocated to this project in the last Capital Plan had been applied elsewhere and that the project is not now considered "alive" by the MTA. The growth in population and commerce in the area around the station and the need for additional transportation resources in case of emergency clearly warrant the reconstruction of the station. We urge the MTA to reconstitute this project, fund it, and pursue it to completion.

Capital Requests Related to Transportation and Mobility

Priority	Agency	Request	Explanation	Location
14/39	DOT	Reconstruct streets	<i>A complete reconstruction of this very heavily utilized corridor from Roosevelt Avenue to the Horace Harding Expressway should be looked into. Curb cuts, traffic mitigation plans, street resurfacing, bus pads, and curb replacements are all sorely needed to meet current and future demand. Junction Blvd is also a candidate for traffic signals that give a small head-start to buses when the light changes.</i>	Junction Boulevard Roosevelt Av Horace Harding Expressway
20/39	DOT	Improve traffic and pedestrian safety, including traffic calming	<i>Traffic mitigation on National & 102nd street between 43rd Ave to Corona Avenues. There is a speeding problem on National and 102nd Street due to an absence of traffic calming measures.</i>	Both 102 Street and National Street Corona Ave 43 Avenue
27/39	NYCTA	Improve accessibility of transit infrastructure, by providing elevators, escalators, etc.	<i>Comprehensive study should be conducted towards upgrades and handicap accessibility to these very heavily utilized stations. Grand Avenue, Elmhurst Avenue, 82nd, 90th/Elmhurst Avenue, 103st (Corona Plaza) and 111th Street</i>	
32/39	DOT	Roadway maintenance (i.e. pothole repair, resurfacing, trench restoration, etc.)	<i>This stretch of road adjacent to a major highway (Grand Central Parkway) is in dire need of a reconstruction. Curb replacement/creation should be a priority. Coordination and conversation with State DOT should be looked into.</i>	114th St Roosevelt Av 43rd Av
33/39	DOT	Repair or provide new street lights	<i>Corona Plaza sits on what was formerly the Fashion Race Course, where the first baseball games to charge admission were held in 1858. These games are commonly recognized as the starting point for professional baseball. In recognition of this amazing history, our community would benefit from having more historical looking street lights. We are requesting that our street lights be replaced with Type M Luminaire & Pole, which were first introduced in 1908 and designed to light wide street corners. We are requesting lighting on 108th Street from Roosevelt Ave to 44th Ave and an extension arm is needed 82nd to 71st Ave. Street funding is needed to proceed with Phase 2 on all of Roosevelt Avenue.</i>	

37/39	NYCTA	Repair or upgrade subway stations or other transit infrastructure	<i>Reopen a Train Station on Broadway in Queens for the MTA LIRR Due to heavy public transportation needs, CB4Q is requesting the reopening of a train station on the MTA LIRR Port Washington Line on Broadway in Queens.</i>	Broadway and Whitney Avenue
39/39	DOT	Reconstruct streets	<i>Capital funding is being requested to continue repairing the substantial amount of damaged curbs throughout the district. Requesting an increase in funding to the NYCDOT curb replacement program/unit.</i>	

Expense Requests Related to Transportation and Mobility

Priority	Agency	Request	Explanation	Location
5/35	DOT	Add street signage or wayfinding elements	<i>Implement a safety education program for children and teens in our district with age-appropriate instruction as to how we can move safely on our sidewalks and streets. Include: -dealing with crossings whose lines of sight are obstructed by parked cars, vans, and trucks -crossings without painted crosswalks -bicycle, e-bike, and micromobility safety: bells; lights and light-colored clothes at night; helmet use; awareness of vehicles' blind spots; sidewalk rules, and the reasons for them; the need for caution using shared space, especially roadways; rules of behavior in shared spaces We believe that safety education directed at the higher grades, and certainly by high school, should include discussion of safety measures and rules of the road when driving a motor vehicle.</i>	
14/35	DOT	Other traffic improvement requests	<i>Enforcement efforts/ Traffic agents at following: Congested corners during evening rush hour. Population, traffic, funding to meet current and future demands specifically: Junction Blvd and the Horace Harding Expressway intersection Broadway at Woodside and Baxter intersection Broadway from 45th Ave to Whitney Ave Roosevelt Avenue and 74th, 75th and 104th streets. Additionally, this additional personnel would help to better enforce issues with electric scooters, illegally parked casino buses, and misuse of bicycle lanes by unauthorized vehicles.</i>	

PARKS, CULTURAL AND OTHER COMMUNITY FACILITIES

Queens Community Board 4

Most Important Issue Related to Parks, Cultural and Other Community Facilities

Quality of parks and park facilities

One of the more pressing issues that CB4Q faces on a day to day basis is the loss and/or lack of valuable green space. While we encourage and welcome the attention and tourism, we cannot forget that local residents, both elderly and young should be entitled to an escape in the form of green space. While we do have a number of parks within our district, many of them need to be re-sodded/ replaced with synthetic turf, have play equipment in dire need of repair/upgrade, or need to be redesigned to accurately reflect their usage and the needs of the community. As the number of Americans suffering from obesity steadily rises, it is important that the residents of CB4Q have safe, modern, and fun places to go to get exercise and stay healthy. The rampant smoking and gambling within our parks is an ongoing issue that is sadly not being properly addressed by the responsible agencies. Informational campaigns to discourage such behavior with proper enforcement (PEP, CBO's, Task Forces, NYPD/ NCO's) to back it would be of a great benefit to our District. As we continue to experience the current pandemic we must further realize that our parks are in fact the connective tissue between our communities and the cultural benefits that valuable park space can bring.

Community District Needs Related to Parks, Cultural and Other Community Facilities

Needs for Parks

FMCP Funding and Transparency

Since the audit of the United States Tennis Association (USTA) completed over a year ago revealing a shortage of revenue to Flushing Meadows Corona Park (FMCP), parks and their significance in our community has become even more vital. To date, no monies have been paid. The general consensus and understanding within our communities are that the USTA continues to use the park for its own benefit. As referenced in the attached letter from CB4's Parks Chair (see link below), transparency on fundraising processes is a considerable cause for concern.

[CB4Q Parks Chair Letter](#)

[Board Member Job Description](#)

Neighborhood parks in our district should serve as backyards for many as the backdrop for athletic skills, healthy living, and community engagement. As such, transparent processes on how money is raised, and where it goes would be ideal in advance of FY22.

Dog Runs

As neighboring Boards fight for more dog-friendly amenities, with little to no headway, it is generally understood that dog runs are difficult to obtain. We at CB4 echo the sentiments of our neighboring Boards as the need for additional dog runs and education to inspire responsible pet ownership is evident, given the increase in pet ownership especially during the Covid-19 pandemic.

Community Gardens

CB4Q has very proudly showcased its community gardens for some time. We hold yearly Earth Day events in which the public is invited to partake in arts and crafts, barbecues, and tours of our gardens which showcase beehives, quails, egg-bearing chickens, and a multitude of crops. Sadly, in the wake of COVID-19, the Parks response is non-existent with regards to follow-ups as evidenced in the attached email to Commissioner Dockett. (See link below)

[Community Garden Follow-up Inquiry](#)

We cannot realistically expect processes to proceed at standard speed, but at the very least, a response after months of silence is deserved. Our communities are in need of a means to be active despite the current pandemic so long as social distancing rules are adhered to.

Needs for Cultural Services

As was evidenced by our screening of *The Woman in the Iron Coffin* with the community, we need to educate more people about the significant history that Elmhurst and Corona contain. Several parks with significant historical meaning often have their history forgotten due to a lack of properly displayed information. With the increase in development geared towards promoting tourism specifically around Elmhurst, historical facts can easily be forgotten. At the very least, proper signage should be implemented at key locations (parks and cemeteries) throughout the district (i.e.: Josephine Caminiti, Louis Simeone, Manuel De Dios), as is done in Manhattan. Emphasis should be put on the multitude of parks scattered throughout our Board as a starting point as these parks are often historical pillars that tell stories of Elmhurst, Newtown, and Corona. Furthermore, applications for landmarks, such as historic Judge Street are often overlooked and denied; a practice that will only serve to further hide the rich past that makes up CB4.

Needs for Library Services

With the number of new schools and pre-kindergartens within our district, we feel that the need for a library within the confines of South Corona would be a very welcome addition to the local community. While the Corona and Lefrak branches have seen recent upgrades, the community at large would like a branch within the vicinity of PS14, the HS of Arts and Business, and several newly proposed pre k facilities all within the South Corona area.

Needs for Community Boards

Community Boards are volunteer heavy organizations widely considered to be the City's front line of defense; we manage countless constituent issues, zoning variances, public meetings, and of course Needs Statements. Despite this heavy responsibility, staffing for many CB's is grossly inadequate for the amount of work output, causing many of them to resort to interns as a primary source of help. Budget constraints have led many boards to maintain a maximum of 2-3 staff members, usually with only one full-timer. An increase in funding is sorely needed to increase current staffing. For the 2nd year in a row, CB's have received City Council stipends meant to empower and strengthen Board and community relations. It must be noted, however, that while upgrades to our offices are welcome, the real need remains in staffing more so since our responsibilities and outreach capabilities have increased because of this stipend.

Capital Requests Related to Parks, Cultural and Other Community Facilities

Priority	Agency	Request	Explanation	Location
1/39	QL	Create a new, or renovate or upgrade an existing public library	<i>The population of Community Board 4Q is growing daily. Although the Elmhurst Library was recently rebuilt, both this branch and the Lefrak City Library will continue to be heavily utilized. A new reference library in the vicinity of 108th Street and Corona Avenue will help service the south east portion of CB4Q which is currently lacking library services.</i>	Corona Avenue 108th Street 108th Street
2/39	DPR	Reconstruct or upgrade a park or amenity (i.e. playground, outdoor athletic field)	<i>Residents of the community have been jogging along the outdoor perimeter of Newtown Field (92nd Street and 57 Avenue) for years as no official track exists within the area. However, a mere 3 blocks away, and sitting directly on the border of CB's 4, 5, and 6 is Hoffman Park, a heavily used 3 acre park. The existing underused softball field is a prime location for a proper jogging track. Ideally, funding can also be used to alleviate the prominent floor cracks that can be seen throughout the basketball, handball, and baseball field. Implementation of a dog run would be a benefit to the local community as minimal space exists for this. Additionally, the area surrounding the handball courts is a dark, dangerous, and structurally unsafe (cracks, tree roots lifting floors, etc.)</i>	
5/39	DPR	Reconstruct or upgrade a park or amenity (i.e. playground, outdoor athletic field)	<i>This park, close to 2 acres services students from several local elementary schools, and eventually a new pre-k with a projected completion of 2021. During the summer months, the Kids in Motion program is at this location. As such, in order to enjoy the park to its full capacity, funding should be allocated to upgrade / repair the existing fitness equipment which is grossly underutilized and outdated. Delineated sports areas would be a welcome addition, as they could potentially promote team based activities, and the potential for leagues, and tournaments.</i>	46 Avenue, Queens, New York, NY

6/39	DPR	Reconstruct or upgrade a building in a park	<i>Frank O' Connor Playground's adjacency to Elmhurst Hospital puts this park in the heart of a very busy corridor that sees a substantial amount of foot traffic and park goers. However, issues are present with the comfort stations, overall lack of shrubbery, and upgrading of the outdated playground equipment. More over, a park this close to a hospital should encourage healthy lifestyles. The current adult exercise equipment is minimal at best, and exercise within the park is often discouraging to park goers due to gang and homeless activity. Additionally, the basketball and handball courts see high usage, and would benefit from refurbishing.</i>	7901 Broadway, Queens, New York, NY
10/39	DCLA	Other cultural facilities and resources requests	<i>The community of Elmhurst is rich in cultural history with many buildings dating back to the 1700's. One of the first religious buildings in Newtown was the old St. James Episcopal Church, and is Elmhurst's oldest remaining building. Other distinctive buildings in the community include Newtown HS, and the Elks Lodge. Not only does the community boast architecture from the 1890s, it is rich in artifacts dating back to an African cemetery in the 1800s located on 90th St. We are requesting a museum in the Elmhurst community to showcase and preserve the past of a community with an abundance of historical significance for generations to come.</i>	
12/39	DPR	Reconstruct or upgrade a park or amenity (i.e. playground, outdoor athletic field)	<i>At just over 3 acres, and located at the northernmost border of Community Board 4, Park of the Americas is in need of refurbishing. The very pressing issue of intoxicated visitors within the park has gotten out of hand. Measures should be taken to discourage such activity. Security measures (benches, LED lighting, security cameras, etc.) are all very welcome additions to this park that is located directly across from an elementary school. While we understand that funding has already been allocated to upgrading playground equipment (CD21 and Borough President), and the synthetic softball field, funding should be allocated to the remainder of the park, specifically the heavily used basketball courts, and seating area(s).</i>	

15/39	DPR	Reconstruct or upgrade a park or amenity (i.e. playground, outdoor athletic field)	<i>Manuel de Dios Triangle has been a popular location of our community to meet for years, placed at a convenient intersection between restaurants, supermarkets, and local businesses along Roosevelt avenue. However, the placement of the elevated park at the center of the triangle represents poor urban planning, as it reduces the space where community members can meet by dividing the park. Money for this project would allow us to transform this raised park into a communal space with additional seating. Signage noting the significance of this individual should be a part of the park redesign.</i>	Please search for a facility or park in your borough or enter an address manually...
19/39	DPR	Reconstruct or upgrade a park or amenity (i.e. playground, outdoor athletic field)	<i>Requesting funding be allocated for the renovation of Triangle 90 (90th Street and Roosevelt Avenue) and Answer Triangle (94th Street and Roosevelt Avenue). These two small parks within very close proximity to each other could essentially be funded as a package deal. The commercial corridor of Roosevelt is in need of several infrastructural upgrades, so a superficial renovation to these two key parks along the corridor would be a welcome addition and an asset to local businesses and residents.</i>	90th St and Roosevelt Ave
21/39	DPR	Reconstruct or upgrade a park or amenity (i.e. playground, outdoor athletic field)	<i>Funding is being requested to help with phase 2 of the adaptive renovation of the reflecting pools at FMCP.</i>	
24/39	DPR	Reconstruct or upgrade a park or amenity (i.e. playground, outdoor athletic field)	<i>Middleburgh Triangle is a small triangle located at the intersection of Corona Avenue, 90th Street and 48th Avenue. This triangle even though maintained, is a key historical location that would benefit from minor infrastructural upgrades. Benches for the bus stop, shrubbery, and historical signs emphasizing the neighborhood change from Middleburgh to Hastings to Newtown to present day Elmhurst should be emphasized as they showcase the rich history of our community. Additionally, Horse brook, Aske and Libra Triangles are all sites which tell a story of the rich history of our community. At the very least these facts should be included as part of the redesign of these small parks which should include benches, plantings/beautification, and historical facts via proper signage.</i>	90th Street 48th avenue and Corona Avenue

31/39	DPR	Provide a new, or new expansion to, a building in a park	<i>Childhood obesity rates have soared within the US over the last three decades. Specifically during the current pandemic, more needs to be done to improve the health of our children. Indoor facilities able to accommodate this need are increasingly necessary as studies have shown that having recreational afterschool programs greatly reduces childhood obesity, and improves cardiorespiratory health in children. While our bordering Community Boards have Al Oerter Recreation Center, and Lost Battalion Hall, CB4 is sorely lacking in a Parks department operated rec. center. Between the numerous athletic programs that can be offered, to the technology and coding programs offered in media labs, a recreation center is a valuable resource that can improve our children's minds and bodies.</i>	
35/39	DPR	Reconstruct or upgrade a park or amenity (i.e. playground, outdoor athletic field)	<i>Lack of park upkeep of Nine Heroes Plaza has turned what was once an enjoyable park to an often-avoided block attracting primarily homeless community members. Nine Heroes plaza is in desperate need of investment from the city. An investment would allow us to make over the space by cleaning the park and planting additional greenery attracting new community members to enjoy the space.</i>	
CS	DPR	Reconstruct or upgrade a park or amenity (i.e. playground, outdoor athletic field)	<i>Requesting that an NYPD satellite station be installed within the confines of Flushing Meadows Corona Park to provide safety in this heavily used large park. Some time last year, with generous funding from the Queens Borough President, makeshift trailers/ satellite stations was installed in the park. However, several concerns were raised specifically around the potential lack of sufficient staffing.</i>	
CS	QL	Create a new, or renovate or upgrade an existing public library	<i>While the building housing the Elmhurst library is deemed complete, the community still has concerns over the lack of green space around the facility. An outdoor sitting/community area would be a proper utilization of the existing vacant space towards the rear of the library.</i>	
CS	QL	Create a new, or renovate or upgrade an existing public library	<i>The streets within this area (Grand Avenue 57th Avenue, Queens Boulevard) are in great disrepair and many have no viable curbs or no curbs at all.</i>	57th Ave Grand Avenue Grand Avenue Grand Avenue

CS	DPR	Reconstruct or upgrade a park or amenity (i.e. playground, outdoor athletic field)	<i>85th Street abuts MTA /LIRR property. Green infrastructure is sorely needed in this area. DEP has already conducted studies to consider this location for green infrastructure, and has in fact identified it as a potential site. Seeking implementation and completion of this long awaited / approved project.</i>	85 Street 55th Road 55th Road
CS	DPR	Reconstruct or upgrade a park or amenity (i.e. playground, outdoor athletic field)	<i>Some center island malls on 111th Street were completely renovated, but the remaining malls are in need of a complete overhaul. The curbs should be raised as part of the reconstruction so that illegal parking can be discouraged, and trees and shrubbery should be planted to better the quality of life for residents facing the malls. With the new school construction at the New York Hall of Science, traffic mitigation studies should be considered.</i>	111th St Sautell Ave Sautell Ave
CS	DPR	Reconstruct or upgrade a park or amenity (i.e. playground, outdoor athletic field)	<i>Clement C Moore Playground is a heavily utilized playground in the heart of Elmhurst now in its final phase of construction as the park design was obsolete. Issues with smoking, gambling, gang activity, rundown bathroom facilities, homeless, and public intoxication drinking are all commonplace at this park. Measures to discourage such activities (i.e.: security cameras, benches, open areas) should be considered during the next design phase of the park. A renovation of the comfort station regardless of cost should be strongly looked into as a future capital project.</i>	

Expense Requests Related to Parks, Cultural and Other Community Facilities

Priority	Agency	Request	Explanation	Location
1/35	OMB	Provide more community board staff	<i>The constituents of CB4 require multiple needs and services. Additional funding is being requested to expand our organizing capacity by hiring an additional staff member.</i>	
10/35	DPR	Forestry services, including street tree maintenance	<i>Homeowners affected by tree roots lifting sidewalks should not have to wait years before repairs are completed. Although funding has increased in the past, an additional increase in FY 2022 is requested to help complete the existing backlog of requests.</i>	

11/35	DPR	Forestry services, including street tree maintenance	<i>There is a backlog of requests for tree pruning. The current pruning cycle is far too long especially now that this funding has been stifled due to the ongoing epidemic. Funding is needed to shorten this cycle, and to restore pruner and climber positions to the DPR. A shorter year pruning cycle will produce stronger, healthier, and better looking trees. A strong maintenance program is needed to care for existing and future trees.</i>
15/35	DPR	Provide better park maintenance	<i>The large amount of parks within the district combined with the lack of proper personnel to maintain them continues to be a problem throughout the district. We understand that due to the current epidemic, funding to our parks has been majorly affected. Nonetheless the need exists more now than ever to request additional parks maintenance personnel, Parks Enforcement Police (PEP), and foresters to meet current and future needs. Police barricades throughout the park as well as the closure of the Queens Museum of Art (QMA) during key events is a deterrent, and not a welcome to park goers.</i>
19/35	QL	Extend library hours or expand and enhance library programs	<i>Community Board #4Q's catchment area of Corona, Corona Heights, and Elmhurst is densely populated with a wide variety of ethnic groups comprised of children, adults, and senior citizens. Our library branches and programs the libraries provide are heavily utilized. We will continue to support six day service, look to support 7 day service when applicable.</i>
22/35	DCLA	Provide more public art	<i>Public art serves as a means to deter graffiti within our parks. More funding should be allocated to grants specifically geared towards public art. Funding should effectively cover both initial implementation and future opportunities to replace existing murals with newer ones as a means to allow several artists to display their work.</i>

**Support nonprofit
cultural
organizations**

We are fortunate to share experiences with people of many nations. Immigrants from Asia and Latin America have made Elmhurst the most diverse part of Queens. Following World War II, Elmhurst became one of the most ethnically diverse neighborhoods as immigrants arrived from new areas. By the 1980s, there were people from 112 nations residing in the district. Meanwhile, Corona in the 1950s was predominately Italian and African American which began to change in the late 1990s, when immigrants from Latin America arrived. To support the past and ever growing history of our changing neighborhoods, CB4 is requesting funding to help support our cultural organizations tasked with documenting, preserving, and promoting awareness of the past and future development and growth of our iconic community.

6. OTHER BUDGET REQUESTS

Other Capital Requests

The Community Board did not submit any Budget Requests in this category.

Other Expense Requests

The Community Board did not submit any Budget Requests in this category.

7. SUMMARY OF PRIORITIZED BUDGET REQUESTS

Capital Budget Requests

Priority	Agency	Request	Explanation	Location
1/39	QL	Create a new, or renovate or upgrade an existing public library	<i>The population of Community Board 4Q is growing daily. Although the Elmhurst Library was recently rebuilt, both this branch and the Lefrak City Library will continue to be heavily utilized. A new reference library in the vicinity of 108th Street and Corona Avenue will help service the south east portion of CB4Q which is currently lacking library services.</i>	Corona Avenue 108th Street 108th Street
2/39	DPR	Reconstruct or upgrade a park or amenity (i.e. playground, outdoor athletic field)	<i>Residents of the community have been jogging along the outdoor perimeter of Newtown Field (92nd Street and 57 Avenue) for years as no official track exists within the area. However, a mere 3 blocks away, and sitting directly on the border of CB's 4, 5, and 6 is Hoffman Park, a heavily used 3 acre park. The existing underused softball field is a prime location for a proper jogging track. Ideally, funding can also be used to alleviate the prominent floor cracks that can be seen throughout the basketball, handball, and baseball field. Implementation of a dog run would be a benefit to the local community as minimal space exists for this. Additionally, the area surrounding the handball courts is a dark, dangerous, and structurally unsafe (cracks, tree roots lifting floors, etc.)</i>	
3/39	NYPD	Renovate or upgrade existing precinct houses	<i>The building now housing the 110 Precinct is inadequate. The precinct house is in a densely populated residential area with limited street access and no viable parking for police vehicles. This project was projected for funding since FY 2013, but has since made no progress. Renovation with the possibility of an underground parking should be considered. to this facility which could double as an emergency shelter.</i>	94-41 43rd Avenue
4/39	HHC	Provide a new or expanded health care facility	<i>With the former St. John's Hospital now closed, the residents of South Elmhurst and its surrounding vicinity are in need of a medical facility. Elmhurst Hospital is operating beyond capacity, and is struggling to keep up with the demand. The need for a medical center in the neighborhood of South Elmhurst cannot be overlooked.</i>	

5/39	DPR	Reconstruct or upgrade a park or amenity (i.e. playground, outdoor athletic field)	<i>This park, close to 2 acres services students from several local elementary schools, and eventually a new pre-k with a projected completion of 2021. During the summer months, the Kids in Motion program is at this location. As such, in order to enjoy the park to its full capacity, funding should be allocated to upgrade / repair the existing fitness equipment which is grossly underutilized and outdated. Delineated sports areas would be a welcome addition, as they could potentially promote team based activities, and the potential for leagues, and tournaments.</i>	46 Avenue, Queens, New York, NY
6/39	DPR	Reconstruct or upgrade a building in a park	<i>Frank O' Connor Playground's adjacency to Elmhurst Hospital puts this park in the heart of a very busy corridor that sees a substantial amount of foot traffic and park goers. However, issues are present with the comfort stations, overall lack of shrubbery, and upgrading of the outdated playground equipment. More over, a park this close to a hospital should encourage healthy lifestyles. The current adult exercise equipment is minimal at best, and exercise within the park is often discouraging to park goers due to gang and homeless activity. Additionally, the basketball and handball courts see high usage, and would benefit from refurbishing.</i>	7901 Broadway, Queens, New York, NY
7/39	HHC	Provide a new or expanded health care facility	<i>In the wake of the Covid-19 pandemic, the need for alternate/additional medical facilities cannot be overlooked. The mental health toll (depression, suicide, anxiety, etc.) during the current pandemic has brought to light issues that are often neglected, and underserved. Now more than ever, we are requesting a rehabilitation center within the confines of Community Board 4 in which drug & alcohol counseling, mental health, and physical therapy services.</i>	
8/39	NYPD	Provide surveillance cameras	<i>Several sectors within the district are in need of added security measures, specifically the corners spanning the entire stretch of Roosevelt Avenue, the adjoining Junction Boulevard, and a high-crime section of 57th Avenue between 99th Street and Junction Blvd. / (41st Avenue) 41 Avenue between National Street and 104th Street. Requesting that surveillance cameras be funded</i>	

9/39	SCA	Provide a new or expand an existing high school	<i>The lack of high schools within the district continues to be a cause for concern. Elementary and Middle Schools while numerous are overcrowding, and the majority of our students must travel outside of their communities for high school. A new high school would help our constituency stay closer to home and will ease overcrowding within SD24. With social distancing, and the current epidemic, the student to teacher ratio is simply too high for proper remote learning.</i>	
10/39	DCLA	Other cultural facilities and resources requests	<i>The community of Elmhurst is rich in cultural history with many buildings dating back to the 1700's. One of the first religious buildings in Newtown was the old St. James Episcopal Church, and is Elmhurst's oldest remaining building. Other distinctive buildings in the community include Newtown HS, and the Elks Lodge. Not only does the community boast architecture from the 1890s, it is rich in artifacts dating back to an African cemetery in the 1800s located on 90th St. We are requesting a museum in the Elmhurst community to showcase and preserve the past of a community with an abundance of historical significance for generations to come.</i>	
11/39	DEP	Other capital budget request for DEP	<i>As referenced, and as been requested in previous years, the section of 111th Street off 43rd Avenue and adjacent to PS28 has been flooding for decades with no assistance, or permanent solution. This presents a danger to the multitude of school buses, students, and patrons of the Hall of Science adjacent schools, and Flushing Meadows Corona Park (FMCP). Requesting that streets be surveyed, and considered for repair.</i>	111th Street 46th Avenue 47th Avenue

12/39	DPR	Reconstruct or upgrade a park or amenity (i.e. playground, outdoor athletic field)	<i>At just over 3 acres, and located at the northernmost border of Community Board 4, Park of the Americas is in need of refurbishing. The very pressing issue of intoxicated visitors within the park has gotten out of hand. Measures should be taken to discourage such activity. Security measures (benches, LED lighting, security cameras, etc.) are all very welcome additions to this park that is located directly across from an elementary school. While we understand that funding has already been allocated to upgrading playground equipment (CD21 and Borough President), and the synthetic softball field, funding should be allocated to the remainder of the park, specifically the heavily used basketball courts, and seating area(s).</i>	
13/39	FDNY	Rehabilitate or renovate existing fire houses or EMS stations	<i>Requesting funding for complete analyzation, and reparation of firehouses within the district. Specifically, we are seeking funding for the renovation(s) of 1. 287/Ladder 136/Battalion 46 2. Division 14/Engine 324. 3. Engine 289/ Ladder 138.</i>	
14/39	DOT	Reconstruct streets	<i>A complete reconstruction of this very heavily utilized corridor from Roosevelt Avenue to the Horace Harding Expressway should be looked into. Curb cuts, traffic mitigation plans, street resurfacing, bus pads, and curb replacements are all sorely needed to meet current and future demand. Junction Blvd is also a candidate for traffic signals that give a small head-start to buses when the light changes.</i>	Junction Boulevard Roosevelt Av Horace Harding Expressway
15/39	DPR	Reconstruct or upgrade a park or amenity (i.e. playground, outdoor athletic field)	<i>Manuel de Dios Triangle has been a popular location of our community to meet for years, placed at a convenient intersection between restaurants, supermarkets, and local businesses along Roosevelt avenue. However, the placement of the elevated park at the center of the triangle represents poor urban planning, as it reduces the space where community members can meet by dividing the park. Money for this project would allow us to transform this raised park into a communal space with additional seating. Signage noting the significance of this individual should be a part of the park redesign.</i>	Please search for a facility or park in your borough or enter an address manually...

16/39	EDC	Build or expand affordable work or research lab spaces	<i>As businesses begin to reopen in the wake of COVID19, consideration should be put into small businesses that are the backbone of our local economy. Studies show that immigrants have a higher rate of business ownership than non-immigrants, with roughly one out of ten immigrant workers owning a business. While our community has made significant progress supporting street vendors (through community based organizations and local elected officials supporting positive legislation), we still lack a clear pipeline for street vendors to open a small business. Our community would benefit from funding allowing us to establish a small business incubator that provides mentorship, training, and education specifically regarding post epidemic safety protocols.</i>	
17/39	NYPD	Add NYPD parking facilities	<i>For years, Community Board #4Q has requested dedicated vehicle parking for the 110 Precinct vehicles. Currently no off street parking is available for NYPD vehicles. The existing precinct, if eventually renovated may have potential for underground parking implemented into its redesign. Such a facility could double as a shelter in the case of public crises/emergencies. Properties adjacent to the precinct should be a main priority including the series of repair shops west of the precinct that have been impeding precinct traffic for some time.</i>	
18/39	HPD	Provide more housing for extremely low and low income households	<i>Community Board 4 has seen a very steady influx of new residents in the last few years, and will only continue to grow at a steady pace. The lack of affordable housing is encouraging "shacking up" in which large families are living out of single rooms and illegally converted basements. An Affordable Housing facility is desperately needed for both the convenience, and the safety of CB4's residents.</i>	
19/39	DPR	Reconstruct or upgrade a park or amenity (i.e. playground, outdoor athletic field)	<i>Requesting funding be allocated for the renovation of Triangle 90 (90th Street and Roosevelt Avenue) and Answer Triangle (94th Street and Roosevelt Avenue). These two small parks within very close proximity to each other could essentially be funded as a package deal. The commercial corridor of Roosevelt is in need of several infrastructural upgrades, so a superficial renovation to these two key parks along the corridor would be a welcome addition and an asset to local businesses and residents.</i>	90th St and Roosevelt Ave

20/39	DOT	Improve traffic and pedestrian safety, including traffic calming	<i>Traffic mitigation on National & 102nd street between 43rd Ave to Corona Avenues. There is a speeding problem on National and 102nd Street due to an absence of traffic calming measures.</i>	Both 102 Street and National Street Corona Ave 43 Avenue
21/39	DPR	Reconstruct or upgrade a park or amenity (i.e. playground, outdoor athletic field)	<i>Funding is being requested to help with phase 2 of the adaptive renovation of the reflecting pools at FMCP.</i>	
22/39	DFTA	Renovate or upgrade a senior center	<i>With the growing, aging population within CB4, the need for an assisted living facility cannot be overlooked. While Corona does in fact have such a facility, the area of Elmhurst does not. Requesting that resources be allocated to obtain property, and build such a facility to house the senior population of South Elmhurst.</i>	
23/39	HPD	Provide more housing for medium income households	<i>Community Board 4 has seen a very steady influx of new residents in the last few years, and will only continue to grow at a steady pace. An emphasis throughout the district is being put into low income housing, however, financial burden does not pertain strictly to low income households. Requesting funding to survey, obtain land, and eventually build an affordable housing facility for medium range income within the district.</i>	
24/39	DPR	Reconstruct or upgrade a park or amenity (i.e. playground, outdoor athletic field)	<i>Middleburgh Triangle is a small triangle located at the intersection of Corona Avenue, 90th Street and 48th Avenue. This triangle even though maintained, is a key historical location that would benefit from minor infrastructural upgrades. Benches for the bus stop, shrubbery, and historical signs emphasizing the neighborhood change from Middleburgh to Hastings to Newtown to present day Elmhurst should be emphasized as they showcase the rich history of our community. Additionally, Horse brook, Aske and Libra Triangles are all sites which tell a story of the rich history of our community. At the very least these facts should be included as part of the redesign of these small parks which should include benches, plantings/beautification, and historical facts via proper signage.</i>	90th Street 48th avenue and Corona Avenue

25/39	HPD	Other affordable housing programs requests	<i>While the Department of Housing Preservation and Development (HPD) provide loan programs the increased need for such programs can not be overlooked. Community Based Organizations (CBO's) such as Neighborhood Housing Services (NHS), do a great job in providing such services, but the demand for increased programs is exceedingly present specifically in low density (2-3 family) homes.</i>
26/39	SCA	Provide technology upgrade	<i>Students within our district strongly need tech upgrades such as whiteboards, laptops, calculators, tablets, etc especially with the current pandemic, and remote learning. We are aware that the newer schools came with a lot of these tech upgrades already, so focus should be put towards the remaining pre-existing schools. Additionally, conversations should begin towards Windows based desktops vs the more sensitive, less compatible Mac based tablets.</i>
27/39	NYCTA	Improve accessibility of transit infrastructure, by providing elevators, escalators, etc.	<i>Comprehensive study should be conducted towards upgrades and handicap accessibility to these very heavily utilized stations. Grand Avenue, Elmhurst Avenue, 82nd, 90th/Elmhurst Avenue, 103st (Corona Plaza) and 111th Street</i>
28/39	HPD	Provide more housing for special needs households, such as the formerly homeless	<i>With the homeless crisis sweeping throughout the city, many communities have been seeing an increase in the number of shelters popping up within their constituencies. As these shelters continue to increase, to avoid the homeless crisis remaining stagnant it is important that housing for formerly homeless as well as seniors be provided. Additonally, Special needs***</i>
29/39	NYPD	Provide a new NYPD facility, such as a new precinct house or sub-precinct	<i>In the wake of the ongoing pandemic, the Queens Center and Queens Place Malls were both put on a watch list for potential looting/riots. Thankfully, these events did not materialize as predicted, but the fear of our community being overwhelmed due to lack of a satellite precinct was a clear concern. Despite department recommendation that this request not be funded in our FY21 budget register, a satellite precinct/ mobile unit must be considered for the western side of Elmhurst, specifically the commercial corridors surrounding the Queens Place, and Queens Center malls.</i>

30/39	DHS	Other capital budget request for DHS	<p><i>Breaking Ground currently operates via 4 outreach teams in Queens 24/7/365 (in all weather), as well as a case management staff that participates in client transports to medical appointments, housing appointments, housing placements, etc., One of their biggest needs is vehicles. While the agency does have a fleet, vehicles' life spans are shorter than average since their mileage racks up so quickly. Requesting funding be allocated to an increase in vehicles to continue providing this very necessary service.</i></p>	
31/39	DPR	Provide a new, or new expansion to, a building in a park	<p><i>Childhood obesity rates have soared within the US over the last three decades. Specifically during the current pandemic, more needs to be done to improve the health of our children. Indoor facilities able to accommodate this need are increasingly necessary as studies have shown that having recreational afterschool programs greatly reduces childhood obesity, and improves cardiorespiratory health in children. While our bordering Community Boards have Al Oerter Recreation Center, and Lost Battalion Hall, CB4 is sorely lacking in a Parks department operated rec. center. Between the numerous athletic programs that can be offered, to the technology and coding programs offered in media labs, a recreation center is a valuable resource that can improve our children's minds and bodies.</i></p>	
32/39	DOT	Roadway maintenance (i.e. pothole repair, resurfacing, trench restoration, etc.)	<p><i>This stretch of road adjacent to a major highway (Grand Central Parkway) is in dire need of a reconstruction. Curb replacement/creation should be a priority. Coordination and conversation with State DOT should be looked into.</i></p>	114th St Roosevelt Av 43rd Av

33/39	DOT	Repair or provide new street lights	<i>Corona Plaza sits on what was formerly the Fashion Race Course, where the first baseball games to charge admission were held in 1858. These games are commonly recognized as the starting point for professional baseball. In recognition of this amazing history, our community would benefit from having more historical looking street lights. We are requesting that our street lights be replaced with Type M Luminaire & Pole, which were first introduced in 1908 and designed to light wide street corners. We are requesting lighting on 108th Street from Roosevelt Ave to 44th Ave and an extension arm is needed 82nd to 71st Ave. Street funding is needed to proceed with Phase 2 on all of Roosevelt Avenue.</i>
34/39	DOB	Other capital budget request for DOB	<i>CB4Q takes in numerous complaints about unsightly, dangerous downed wires on a daily basis. Since each company maintains responsibility for its own line, it is very difficult to determine which company is responsible to service the problem. Downed lines can stay unserved indefinitely on our city streets. To the average person, there is no way to determine if a downed wire is high voltage or benign, which poses the key question of safety. Fallen wires can electrocute or cause fires. Our constituents should not be put in a position where their safety is at risk. Trained workers are needed to climb utility poles to perform maintenance Requesting access to an agency held accountable for this maintenance.</i>
35/39	DPR	Reconstruct or upgrade a park or amenity (i.e. playground, outdoor athletic field)	<i>Lack of park upkeep of Nine Heroes Plaza has turned what was once an enjoyable park to an often-avoided block attracting primarily homeless community members. Nine Heroes plaza is in desperate need of investment from the city. An investment would allow us to make over the space by cleaning the park and planting additional greenery attracting new community members to enjoy the space.</i>

36/39	DEP	Evaluate a public location or property for green infrastructure, e.g. rain gardens, stormwater greenstreets, green playgrounds	<i>Requesting more staffing for the maintenance of the recently implemented Green Infrastructure initiative. Currently DEP staff is scheduled to maintain and clean these sites on a weekly basis, but a majority of our sites go for weeks, possibly months with no visits. Current staffing is simply not enough. Requesting funding to meet current and future demand.</i>	
37/39	NYCTA	Repair or upgrade subway stations or other transit infrastructure	<i>Reopen a Train Station on Broadway in Queens for the MTA LIRR Due to heavy public transportation needs, CB4Q is requesting the reopening of a train station on the MTA LIRR Port Washington Line on Broadway in Queens.</i>	Broadway and Whitney Avenue
38/39	HPD	Provide more housing for extremely low and low income households	<i>Tenant protection services are designed to preserve affordable housing by detecting and curtailing patterns and practices of landlord fraud. With the dramatic growth seen within CB4 our constituency is in need of extensive services that would help them to preserve their quality of life. Funding is being requested for expansion of these programs.</i>	
39/39	DOT	Reconstruct streets	<i>Capital funding is being requested to continue repairing the substantial amount of damaged curbs throughout the district. Requesting an increase in funding to the NYCDOT curb replacement program/unit.</i>	
CS	DYCD	Other capital budget request for DYCD	<i>The low allocation of funds within CB4 is surprising considering SD 24 is currently the most overcrowded in the city. There is a need for after school programming for adolescents grades 6-8 who at this stage in their lives need more aggressive mentoring and help with school work especially with the current pandemic, and the effects that staying indoors for extended periods of time can have on our youth's psyche.</i>	
CS	DPR	Reconstruct or upgrade a park or amenity (i.e. playground, outdoor athletic field)	<i>Requesting that an NYPD satellite station be installed within the confines of Flushing Meadows Corona Park to provide safety in this heavily used large park. Some time last year, with generous funding from the Queens Borough President, makeshift trailers/ satellite stations was installed in the park. However, several concerns were raised specifically around the potential lack of sufficient staffing.</i>	

CS	DEP	Evaluate a public location or property for green infrastructure, e.g. rain gardens, stormwater greenstreets, green playgrounds	<i>Reconstruction of streets in the surrounding area of 41st Avenue and Roosevelt Avenue</i>	41st Avenue Roosevelt Avenue Roosevelt Avenue
CS	QL	Create a new, or renovate or upgrade an existing public library	<i>While the building housing the Elmhurst library is deemed complete, the community still has concerns over the lack of green space around the facility. An outdoor sitting/community area would be a proper utilization of the existing vacant space towards the rear of the library.</i>	
CS	QL	Create a new, or renovate or upgrade an existing public library	<i>The streets within this area (Grand Avenue 57th Avenue, Queens Boulevard) are in great disrepair and many have no viable curbs or no curbs at all.</i>	57th Ave Grand Avenue Grand Avenue
CS	DPR	Reconstruct or upgrade a park or amenity (i.e. playground, outdoor athletic field)	<i>85th Street abuts MTA /LIRR property. Green infrastructure is sorely needed in this area. DEP has already conducted studies to consider this location for green infrastructure, and has in fact identified it as a potential site. Seeking implementation and completion of this long awaited / approved project.</i>	85 Street 55th Road 55th Road
CS	DPR	Reconstruct or upgrade a park or amenity (i.e. playground, outdoor athletic field)	<i>Some center island malls on 111th Street were completely renovated, but the remaining malls are in need of a complete overhaul. The curbs should be raised as part of the reconstruction so that illegal parking can be discouraged, and trees and shrubbery should be planted to better the quality of life for residents facing the malls. With the new school construction at the New York Hall of Science, traffic mitigation studies should be considered.</i>	111th St Sautell Ave Sautell Ave

CS

DPR

Reconstruct or upgrade a park or amenity (i.e. playground, outdoor athletic field)

Clement C Moore Playground is a heavily utilized playground in the heart of Elmhurst now in its final phase of construction as the park design was obsolete. Issues with smoking, gambling, gang activity, rundown bathroom facilities, homeless, and public intoxication drinking are all commonplace at this park. Measures to discourage such activities (i.e.: security cameras, benches, open areas) should be considered during the next design phase of the park. A renovation of the comfort station regardless of cost should be strongly looked into as a future capital project.

Expense Budget Requests

Priority	Agency	Request	Explanation	Location
1/35	OMB	Provide more community board staff	<i>The constituents of CB4 require multiple needs and services. Additional funding is being requested to expand our organizing capacity by hiring an additional staff member.</i>	
2/35	SBS	Other workforce development requests	<i>Several CBO's throughout the borough see thousands of clients on a weekly basis to assist with social services including, but not limited to courses on basic literacy, computers, ESL, etc. Many clients however cannot afford to take relevant courses, nor afford the supplies necessary to do so. Funding should be allocated to provide clients with stipends specifically geared towards assisting the less fortunate to better themselves without allowing financial burden to be a deciding factor in doing so.</i>	
3/35	DOHMH	Animal and pest control requests including reducing rat and mosquito populations	<i>There is a proliferation of rats being seen throughout the district. Funds are being requested to continue programs such as Rat Academy geared towards raising public awareness.</i>	
4/35	DOHMH	Other programs to address public health issues requests	<i>The current Covid-19 crisis unfortunately proved how woefully unprepared we are as a city to address emergency public health crises. The measles outbreak of 2018 which lasted until August 2019 cost the city over \$6 million dollars with over 500 New York City employees deployed. This further emphasizes that the DOHMH was grossly understaffed. It is imperative to the health of our city to increase funding for DOHMH so that they can increase staffing levels, as well as produce more literature to address the growing anti-vaxxer movement.</i>	

5/35	DOT	Add street signage or wayfinding elements	<p><i>Implement a safety education program for children and teens in our district with age-appropriate instruction as to how we can move safely on our sidewalks and streets. Include: -dealing with crossings whose lines of sight are obstructed by parked cars, vans, and trucks -crossings without painted crosswalks -bicycle, e-bike, and micromobility safety: bells; lights and light-colored clothes at night; helmet use; awareness of vehicles' blind spots; sidewalk rules, and the reasons for them; the need for caution using shared space, especially roadways; rules of behavior in shared spaces We believe that safety education directed at the higher grades, and certainly by high school, should include discussion of safety measures and rules of the road when driving a motor vehicle.</i></p>
6/35	DSNY	Other cleaning requests	<p><i>We support the ACE program that works as a supplement for existing street cleaning services. Funding has allowed the program to effectively canvas several commercial and residential sectors of the district, and assist with cleanup (sidewalk sweeping, scraping of utility poles, garbage mitigation) Currently, the program covers: - Diversity Plaza - 104th St. from Roosevelt to Corona Aves. -108th Street from Roosevelt to Corona Aves . -111th St /Roosevelt Station - William F. Moore Park Requesting that the Ace Program be considered for: 1. Broadway from Cornish Ave. to Queens Blvd. 2. Queens Blvd. E/B and W/B between Grand to Horace Harding Expwy. 3. Corona Avenue (91st Pl. to Queens Blvd) 4. Grand Ave from QB to Haspel St.</i></p>
7/35	DOB	Address illegal conversions and uses of buildings	<p><i>According to data from NYC Open Data, so far the Department of Buildings has received 22,763 illegal conversion complaints, the top most common complaint. The second most common complaint is Work Without a Permit, which was the subject of 20,852 complaints. The third most common complaint is faulty single-use elevators with only 8,783 complaints. With numbers like these, it is quite obvious that illegal conversions and work without a permit are problems that are plaguing our city. Since 2018, illegal conversion complaints have risen 3,053, and work without a permit complaints have increased 4,587. In order to adequately and promptly address these issues, it is important that DOB receive funding to hire more code enforcement inspectors.</i></p>

8/35	SBS	Assist with on-site business compliance with City regulations	<i>Community Board 4Q is a mecca for street food. While we pride ourselves on the eclectic nature of our cuisines, the divide between street vendors and brick and mortar establishments is very clear. Many street vendors may not fully understand City laws. I.e.: illegal dumping of cooking oil/debris, significance of letter grades, proximity to stores, etc. The request is for specific emphasis to be put into workshops, awareness, and literature specifically geared towards street vendor laws; above all, these initiatives should be in multiple languages conducive with the communities they will serve.</i>
9/35	DCP	Study land use and zoning to better match current use or future neighborhood needs	<i>CB4Q is experiencing overdevelopment at an alarming rate. Existing one and two family homes are demolished and replaced with high density buildings that are out of character with the surrounding neighborhood. The existing infrastructure was built mainly for low density housing and the additional units place an undue strain on our fragile infrastructure. Requesting that DCP evaluate the current zoning in CB4Q taking into account the current state of our infrastructure, and identify areas where zoning changes would improve the quality of life for our constituency.</i>
10/35	DPR	Forestry services, including street tree maintenance	<i>Homeowners affected by tree roots lifting sidewalks should not have to wait years before repairs are completed. Although funding has increased in the past, an additional increase in FY 2022 is requested to help complete the existing backlog of requests.</i>
11/35	DPR	Forestry services, including street tree maintenance	<i>There is a backlog of requests for tree pruning. The current pruning cycle is far too long especially now that this funding has been stifled due to the ongoing epidemic. Funding is needed to shorten this cycle, and to restore pruner and climber positions to the DPR. A shorter year pruning cycle will produce stronger, healthier, and better looking trees. A strong maintenance program is needed to care for existing and future trees.</i>

12/35	EDC	Reinvest in the graffiti free removal program for private sites	<i>The district continues to see a spike in graffiti. Community groups in conjunction with several City agencies are doing their best to keep up via cleaning events and initiatives, but funding is still needed to expand on programs geared towards graffiti removal. Better yet funding can and should be allocated to programs geared towards replacing graffiti with murals designed by local community artists.</i>	
13/35	DSNY	Increase enforcement of illegal posting laws	<i>Several commercial corridors and their surrounding areas are infamous for illegal postings on utility poles, walls, and construction fences. The entire stretch of Roosevelt Avenue from 72nd Street to 114th Street and its adjacent side streets are havens for these postings. Business owners do their best to remove these flyers, but with virtually no enforcement, it is a losing and discouraging battle. Postings vary from illegal apartment rentals, to vehicle sales to fitness classes. These forms of advertisement are dangerous, unjust, and often advertise illegal services. More stringent enforcement should be implemented.</i>	Roosevelt Ave 72nd St 72nd St
14/35	DOT	Other traffic improvement requests	<i>Enforcement efforts/ Traffic agents at following: Congested corners during evening rush hour. Population, traffic, funding to meet current and future demands specifically: Junction Blvd and the Horace Harding Expressway intersection Broadway at Woodside and Baxter intersection Broadway from 45th Ave to Whitney Ave Roosevelt Avenue and 74th, 75th and 104th streets. Additionally, this additional personnel would help to better enforce issues with electric scooters, illegally parked casino buses, and misuse of bicycle lanes by unauthorized vehicles.</i>	
15/35	DPR	Provide better park maintenance	<i>The large amount of parks within the district combined with the lack of proper personnel to maintain them continues to be a problem throughout the district. We understand that due to the current epidemic, funding to our parks has been majorly affected. Nonetheless the need exists more now than ever to request additional parks maintenance personnel, Parks Enforcement Police (PEP), and foresters to meet current and future needs. Police barricades throughout the park as well as the closure of the Queens Museum of Art (QMA) during key events is a deterrent, and not a welcome to park goers.</i>	

16/35	FDNY	Expand funding for fire prevention and life safety initiatives	<i>The FDNY Fire Safety Educational Unit needs additional funding to provide smoke detectors and carbon monoxide detectors for distribution to the public. This is a public service that will save lives.</i>	
17/35	DOHMH	Animal and pest control requests including reducing rat and mosquito populations	<i>With mosquito-borne illnesses such as Zika, and West Nile within our communities, funding request would entail more staffing, and the continuation of public awareness campaigns to teach prevention in multiple languages. Our public plazas and abandoned properties are particularly vulnerable to rats. Requesting funding to increase awareness, and mitigation of pests (rats and mosquitoes) throughout the community.</i>	
18/35	DOHMH	Create or promote programs for education and awareness on preventing chronic diseases including quitting smoking, nutrition, physical activity, etc.	<i>The communities of Elmhurst and Corona both see farmers' markets, and several campaigns geared towards condoning walking, and riding vs driving. Our communities would like to continue to see expansions of programs (WIC at farmers' markets, bike helmet giveaways, health benefits, etc.) Material and outreach should be emphasized in multiple languages conducive with the communities they are trying to reach.</i>	
19/35	QL	Extend library hours or expand and enhance library programs	<i>Community Board #4Q's catchment area of Corona, Corona Heights, and Elmhurst is densely populated with a wide variety of ethnic groups comprised of children, adults, and senior citizens. Our library branches and programs the libraries provide are heavily utilized. We will continue to support six day service, look to support 7 day service when applicable.</i>	
20/35	SBS	Provide or expand access to capital	<i>Lack of banks within CB4 is a major cause for concern. (Stats from # of banks Queens vs other boroughs) https://neighborhoodtrust.org/2016/01/11/the-economist-features-neighborhood-trust-federal-credit-union-on-its-service-to-immigrant-community/ Neigh</i>	
21/35	FDNY	Other expense budget request for FDNY	<i>The majority of the firehouses within our district already have generators in case of a power outage. However, Engine 289 in Corona is still operating with an above ground, multiple unit setup. Requesting funding to provide an in ground generator for this heavily utilized station.</i>	97-28 43rd Avenue

22/35	DCLA	Provide more public art	<i>Public art serves as a means to deter graffiti within our parks. More funding should be allocated to grants specifically geared towards public art. Funding should effectively cover both initial implementation and future opportunities to replace existing murals with newer ones as a means to allow several artists to display their work.</i>
23/35	SBS	Conduct a commercial district needs assessment	<i>In the wake of the COVID-19 pandemic, small businesses were left with little help and knowledge as to what to do next. The obvious disconnect between our businesses and City agencies is a major cause for concern. In order to truly gain knowledge as to what these specific needs are, a needs assessment of CB4's most prolific commercial corridors is being requested. Corridors include: Junction Blvd. from Corona Ave to Roosevelt Ave, Broadway from Baxter Avenue to Queens Blvd, and Roosevelt Avenue from 82nd Street to 103 Street (Corona Plaza).</i>
24/35	DHS	Provide rental assistance/vouchers for permanent housing	<i>With the proliferation of hotel shelters throughout the city, the need for services to get our residents out of shelters should be more heavily emphasized. Family shelters within the district currently house multi generational homeless families. The cost of housing these families in shelters/hotels far exceeds the cost of permanent housing. Funding should instead be allocated to preventative programs, and those geared towards removing people from the system. The Adopted Budget Register for FY21 stated that this request had already been funded, however more transparency delineating exactly where and how these funds were allocated would be appreciated.</i>
25/35	DSNY	Increase enforcement of dirty sidewalk/dirty area/failure to clean area laws	<i>Several areas of our district are seeing a substantial amount of garbage pile up, with little to no penalty to the property owners. Commercial corridors such as Queens Boulevard, Roosevelt Avenue, Junction Boulevard, Broadway, and National Street near Corona Plaza are infamously known for excessive littering, but enforcement is scarce. More over with the ACE Program in effect at several of these locations, enforcement should be more stringent on properties who have no reason to not maintain their sidewalks including adjacent tree pits.</i>

26/35	HRA	Provide Metrocards to help low-income New Yorkers get to work and around the City	<i>With the ridership at many of our stations as high as 17 million riders per year for Roosevelt Ave., and as high as 6.8 million for Woodhaven Blvd, it is obvious that our residents are using mass transit as a means to get around. The Fair Fares program emphasizes that the income throughout the district reflects a need for continued support to the program.</i>
27/35	DFTA	Enhance programs for elder abuse victims	<i>Requesting funding to expand Elder Abuse Prevention programs throughout the district.</i>
28/35	DOB	Assign additional building inspectors (including expanding training programs)	<i>Covid** With more inspectors, In 2018, there were 165,988 permits issued by DOB, and in the first three quarters of 2019, 120,668 ,putting us on track to meet or exceed last year's numbers. With the rapid increase in development, it is crucial that DOB has enough building inspectors and staff to adequately ensure the safety of the over 1.1 million buildings in NYC. In FY 19, the average response time for Priority B complaints was 11.4 days. While Priority B complaints aren't life threatening, they can be indicators that something is unsafe. No matter what we say in an attempt to please the case for more funding, no one said it better than former DOB Commissioner Rick Chandler, who in a 2018 interview said "I think if we had ten times the resources..., we would still be just making a dent."</i>
29/35	HPD	Provide emergency housing for households displaced by fires or City-issued vacate orders	<i>Our catchment area is densely populated with a wide variety of various ethnic groups comprised of children, adults and seniors. Funding is needed to provide assistance with emergency displacement as a result of fires or vacate orders. The Red Cross and NYCEM offer some assistance to those in crises by addressing immediate needs, but more is needed. During public crises, temporary centers for those affected are often set up locally, but the aftermath of disasters often linger for several months. CB4 is requesting an agency be formed designated with the immediate/temporary relocation assistance and advisory services in cases of crises..</i>

30/35	DCLA	Support nonprofit cultural organizations	<i>We are fortunate to share experiences with people of many nations. Immigrants from Asia and Latin America have made Elmhurst the most diverse part of Queens. Following World War II, Elmhurst became one of the most ethnically diverse neighborhoods as immigrants arrived from new areas. By the 1980s, there were people from 112 nations residing in the district. Meanwhile, Corona in the 1950s was predominately Italian and African American which began to change in the late 1990s, when immigrants from Latin America arrived. To support the past and ever growing history of our changing neighborhoods, CB4 is requesting funding to help support our cultural organizations tasked with documenting, preserving, and promoting awareness of the past and future development and growth of our iconic community.</i>
31/35	DSNY	Provide or expand NYC organics collection program	<i>While neighboring districts of Rego Park, Glendale, and some parts of Jackson Heights already have the organics program, the neighborhood of Corona, and the majority of Elmhurst have yet to be a part of this successful program.</i>
32/35	DYCD	Provide, expand, or enhance after school programs for elementary school students (grades K-5)	<i>There is a tremendous need for after school programs for elementary school students grades k-5. At this early stage the students' lives, it is important to have enriching programs that are both educational and fun. Said programs will also help parents who have limited work hours, will help the children with social skills, and give students an advantage as they progress in their education.</i>
33/35	DYCD	Other youth workforce development requests	<i>Our district would benefit greatly from having a youth center that would support our youth and their families. Educational programs, mentoring, homework help, extracurricular activities, and counseling are just some of the services that the youth within our district are in desperate need of. Seeking funding to obtain land, and construct a center within the confines of our district.</i>

34/35	SBS	Other expense commercial district revitalization requests	<i>As small businesses begin to re-open post COVID, they will need to re-evaluate how to conduct business while adhering to new public health measures. For many of them, converting to digital advertising and shipping will be anything but avoidable. Many of the small businesses in our district have been in existence for decades and were able to survive under the old model, however due to a variety in language barriers and technological competencies, many business owners may need training to learn new marketing techniques in how to continue operating through a second wave and post pandemic.</i>
-------	-----	--	---

35/35	HRA	Improve the delivery of emergency food and shelter in case of a disaster	<i>Local Law Int 2057 - 2020 is a Local Law that requires relevant city agencies to develop a plan ensuring that students have access to school meals during emergency situations resulting in school closure. During the Covid-19 pandemic, many of our low income households depended very highly on food pantries to sustain them. Many of our students however were/ and still are in need of daily meals as they would normally receive during normal school hours.</i>
-------	-----	---	--