

Park Drive East Pump Station

Park Drive East at 73rd Terrace, Queens

Community Board 8

April 2022





NYC DEPARTMENT OF ENVIRONMENTAL PROTECTION

Our Mission

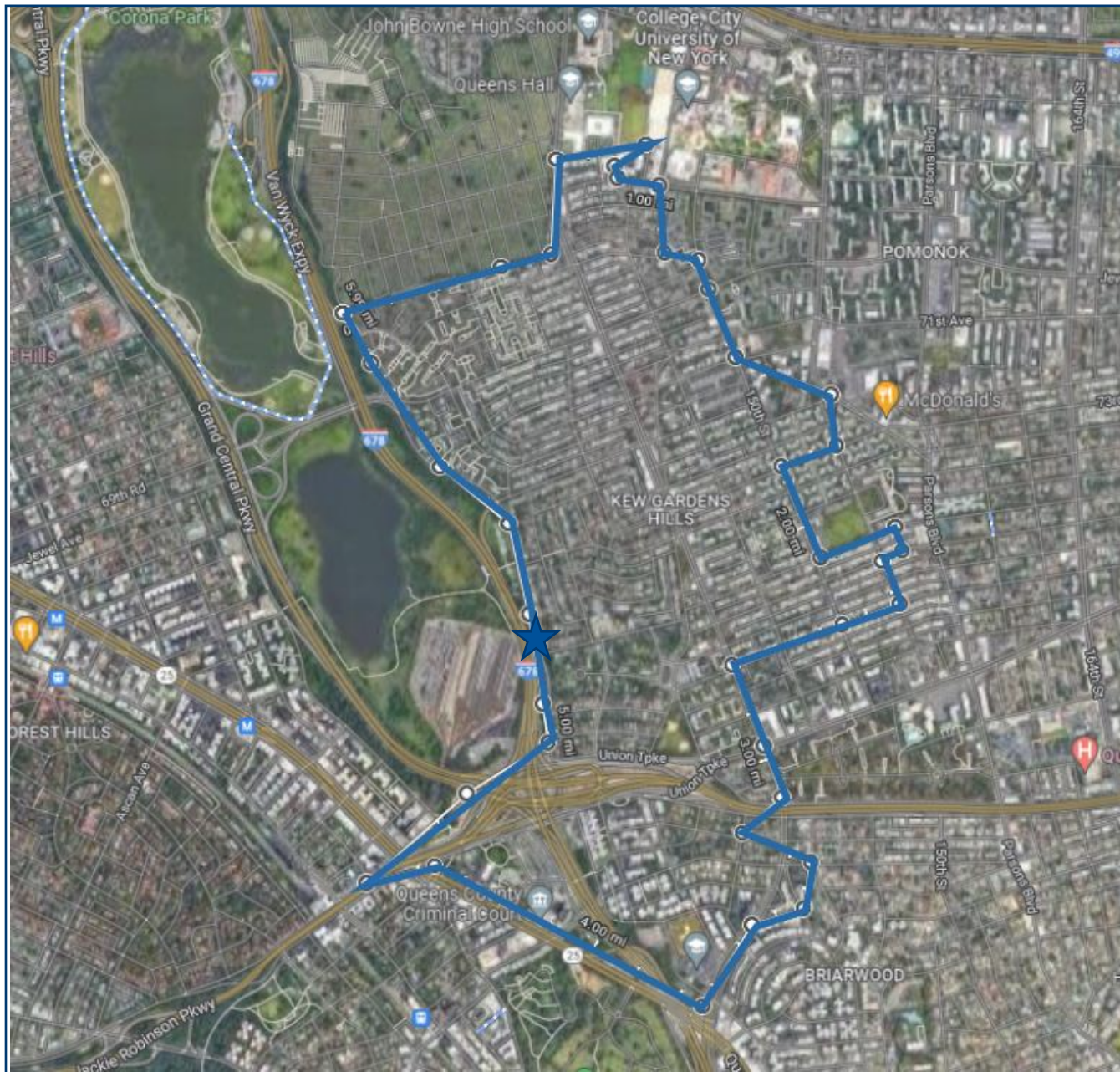
DEP's mission is to enrich the environment and protect public health for all New Yorkers by providing high quality drinking water, managing wastewater and stormwater, and reducing air, noise, and hazardous materials pollution.

DEP treats over a billion gallons of sewage every day at our 14 wastewater resource recovery facilities, and that wastewater is conveyed to treatment by 96 pump stations across the city through a network of 7,400 miles of sewers.

OVERVIEW

Park Drive East Pump Station

- The Park Drive East Pump Station was originally constructed in 1930s and was last upgraded in the 1980s. Power upgrades were completed in 2010s.
- The proposed reconstruction project will upgrade the entire pump station, establish redundancy for all mechanical and electrical equipment, and raise all critical electrical equipment above the floodplain to ensure resiliency and reliability.

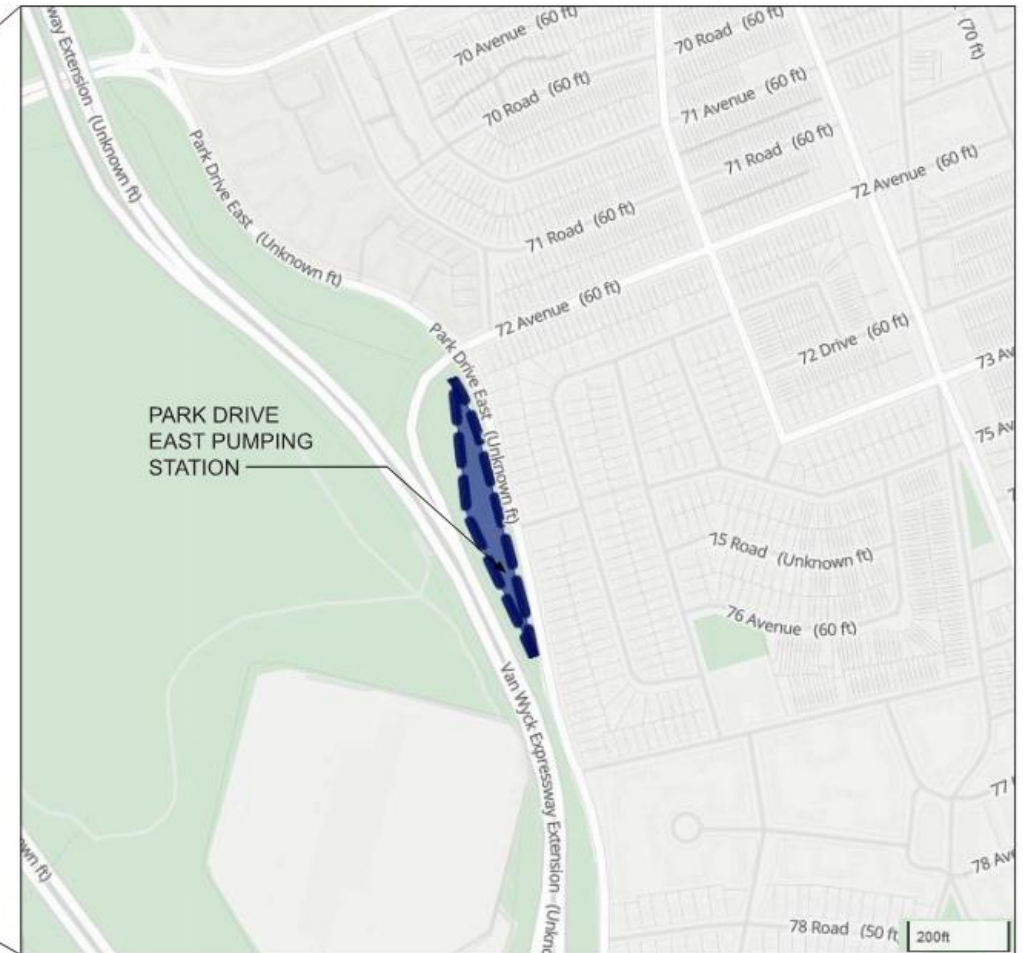


Approximate Service Area

- The pump station pumps up to 15 million gallons of wastewater a day.
- It serves Queens residents and businesses within a 620-acre drainage area.

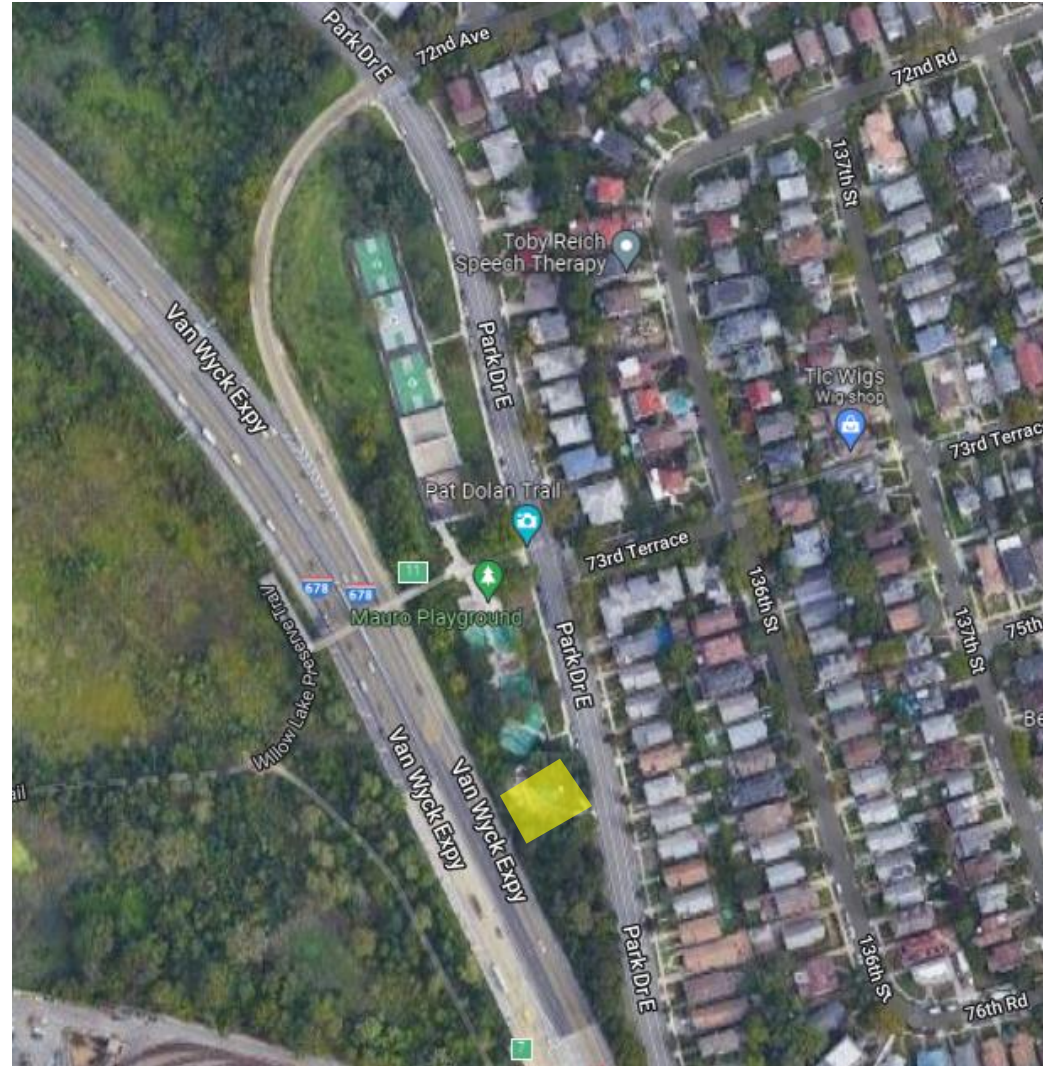
Approximate boundaries of service area

Project Neighborhood



Kew Gardens Hills Neighborhood, Queens

Project Location



Current Site Conditions



View of the pump station from west side of Park Drive East

Current Site Conditions



View of pump station from east side of Park Drive East



View of Park Drive East looking south

Current Site Conditions



View of residences on the east side of Park Drive East



View Mauro Playground, north of pump station

Existing Lot



Proposed Site Plan

MAURO
PLAYGROUND

ELECTRICAL VAULTS

REMOVABLE FENCE PANELS
FOR TRUCK ACCESS

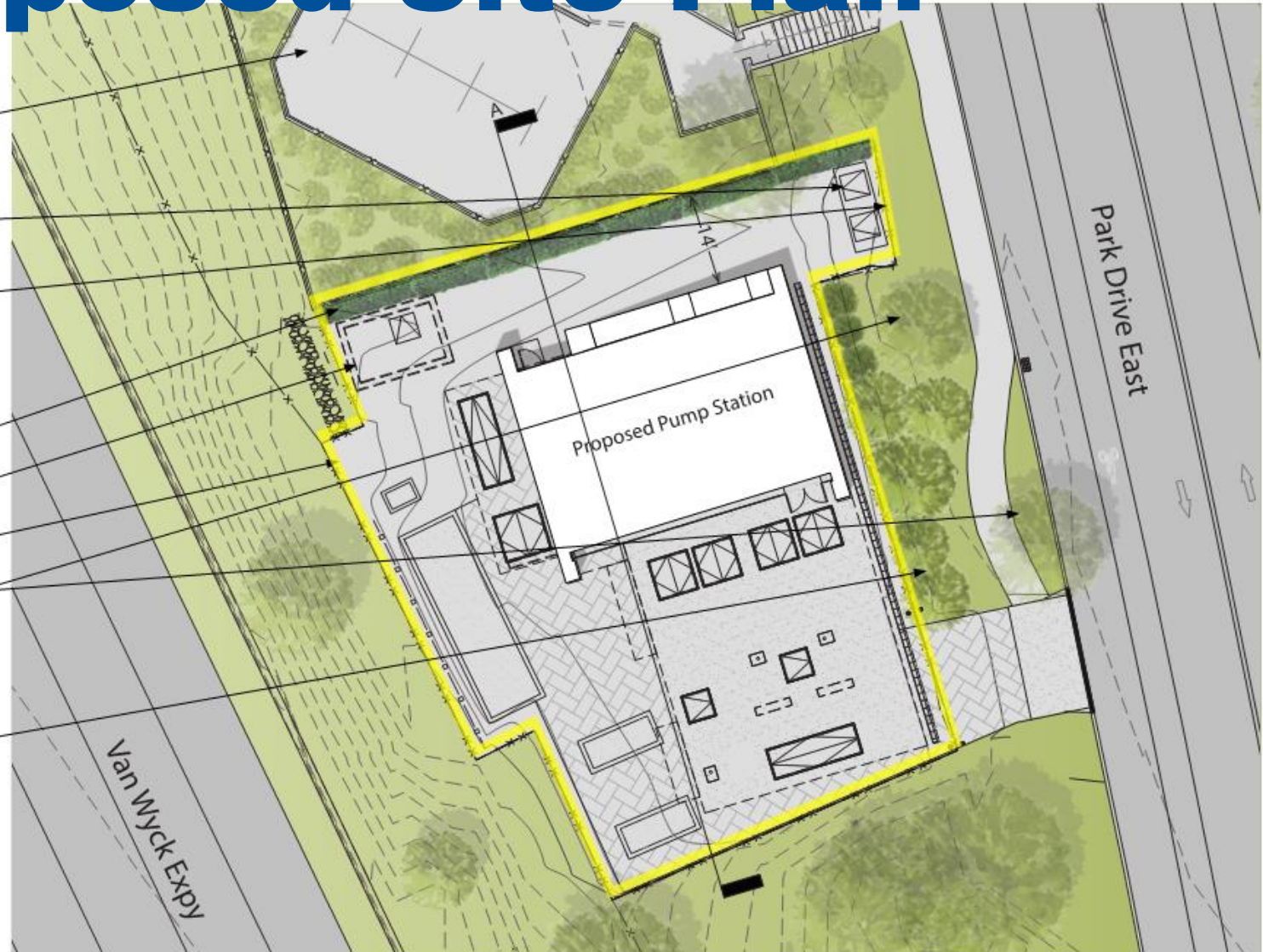
18" WIDE BY 3' DEEP PLANTING BED WITH
SHRUBS FOR VISUAL BARRIER. TO BE
COORDINATED WITH DEPARTMENT OF
PARKS AND RECREATION FOR FINAL SUBMITTAL

FORCE MAIN VAULT

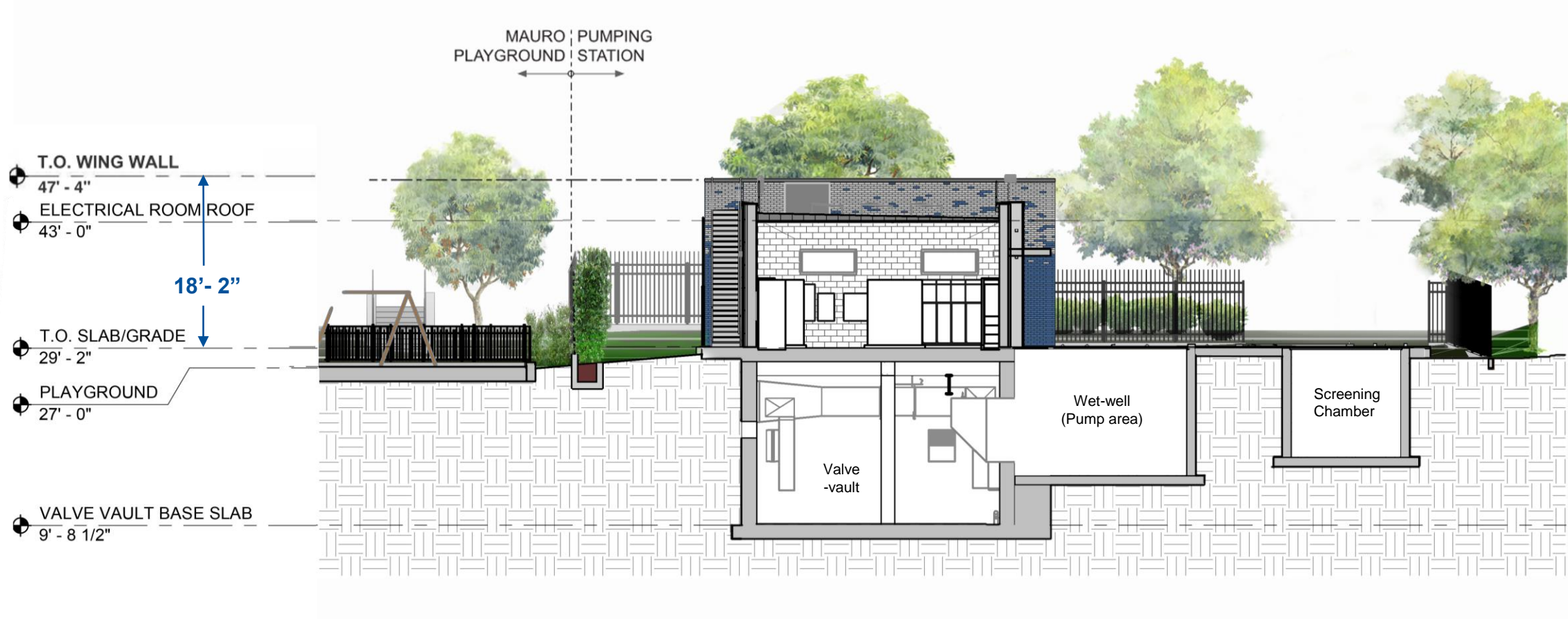
PUMPING STATION
POSSESSION LINE

EXISTING TREES TO REMAIN

SHRUB PLANTINGS AND TREES TO BE
COORDINATED WITH DEPARTMENT OF
PARKS AND RECREATION



Section



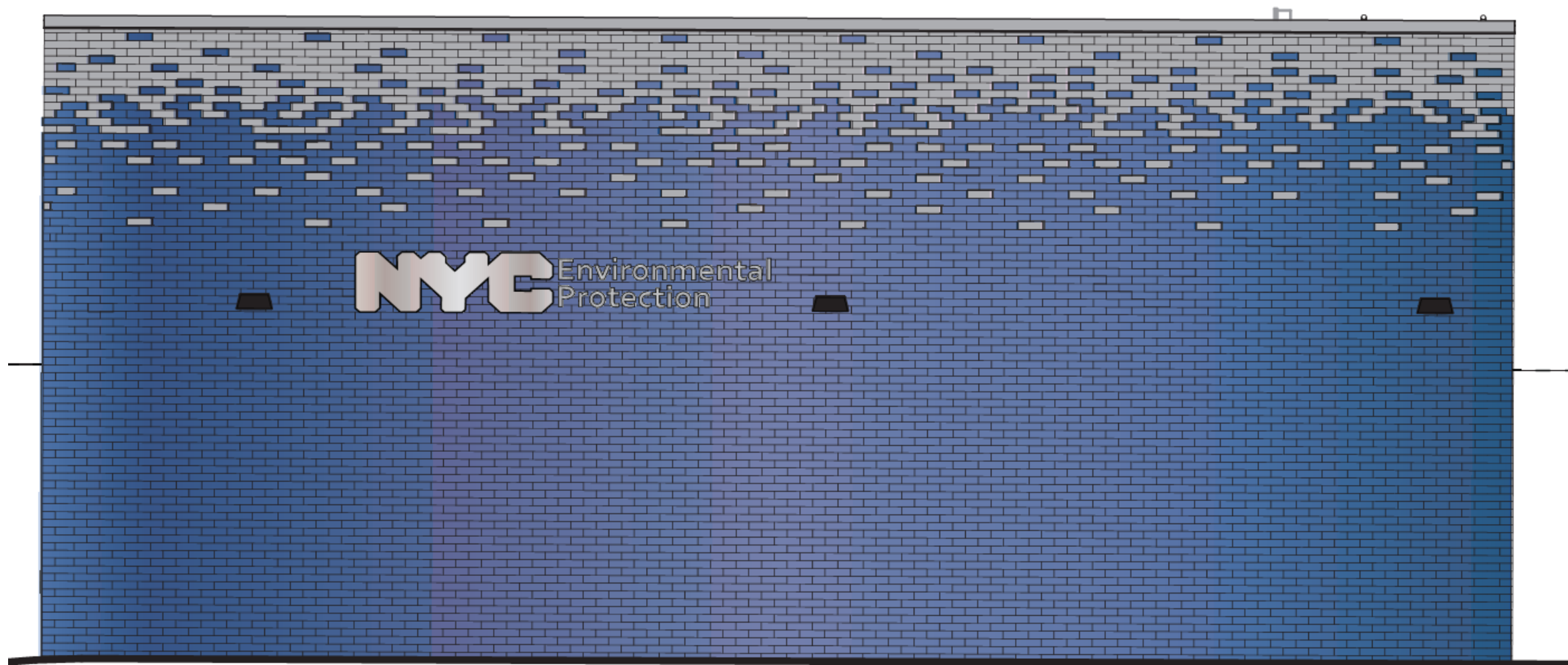
Renderings



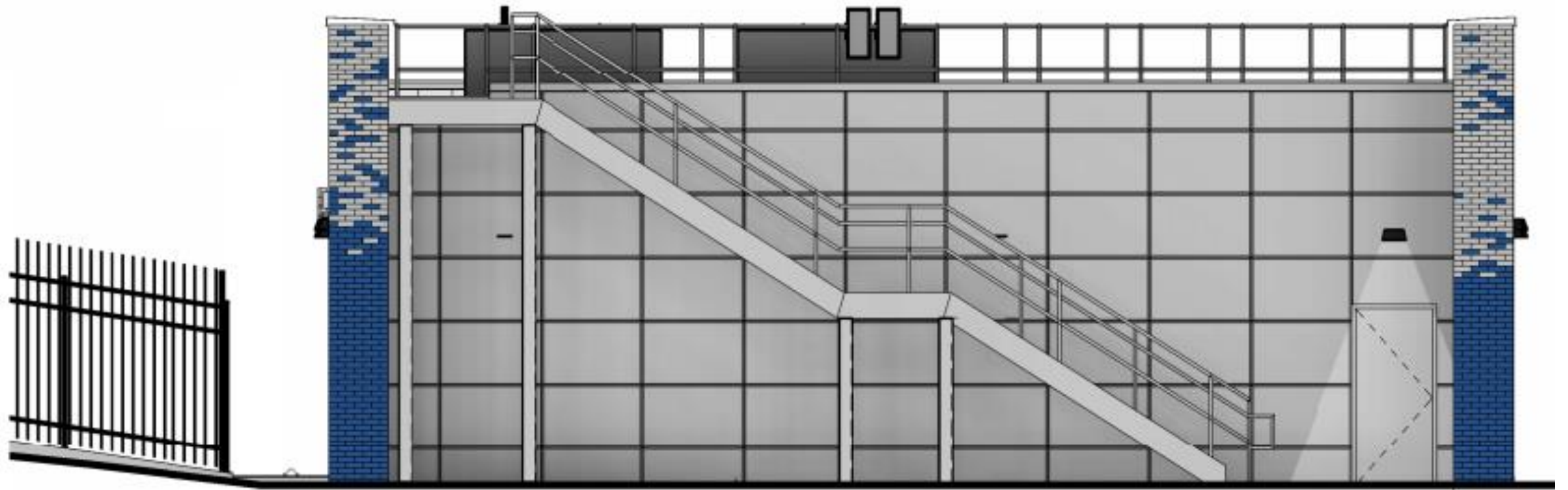
View Looking West



East Elevation



North Elevation



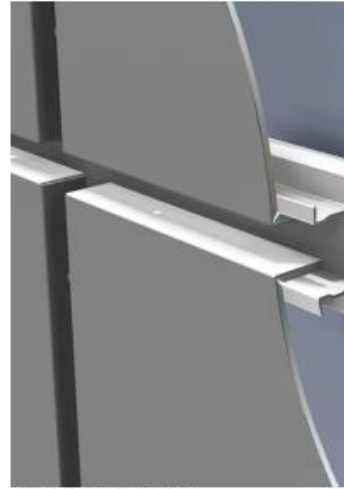
Materials



GRAY NORMAN BRICK



GLAZED BRICK



METAL PANELS
COLOR: CENTRIA 971
CHROMINUM GRAY



METAL PANEL CLAD CANOPY
COLOR: CENTRIA 971
CHROMINUM GRAY



GENERATOR
COLOR: RAL 7001 SILVER
GREY



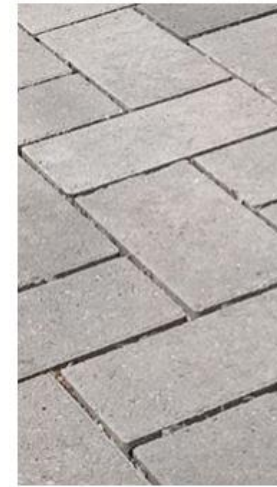
ARCHITECTURAL SECURITY
FENCE



SOLAR PANELS



STAINLESS STEEL RAILING



ECO-PIORA
PERMEABLE PAVER
SYSTEM

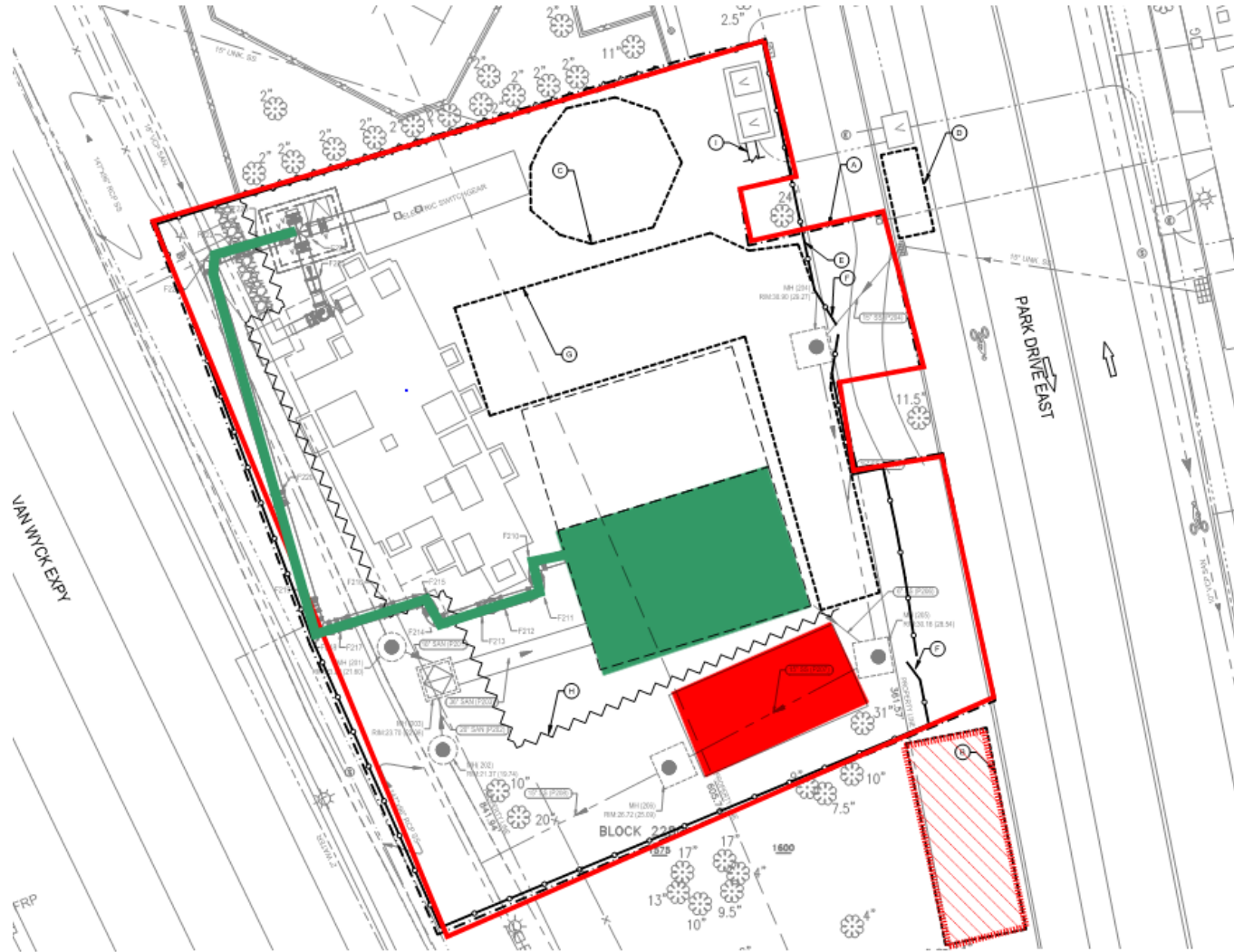


REFLECTIVE
BOLLARD



POWER PACK
COLOR: RAL 7001 SILVER
GREY

Temporary Construction Condition



BELOW GRADE FEATURES
- INTERIM PS AND FM CONNECTION

ABOVE GRADE FEATURE
- SECURITY FENCE
(along curb)
(sidewalk will be inaccessible)
- POWER EQUIPMENT
- MEETING TRAILER* - - - -
(* to be coordinated with Parks and DOT)

Anticipated Schedule

October 2023 – April 2026: Construction

- December 2024 – June 2025 – substructure construction
 - Period of highest truck traffic

Construction Hours: 8am to 6pm M-F

- Generally, activity ramps down at 3:30pm

Questions?