



**US Army Corps
of Engineers** ®

OEM

New York City Office of Emergency Management

DDC

**NEW YORK CITY DEPARTMENT OF
DESIGN + CONSTRUCTION**

Construction Manager:
American Manufactured
Structures & Services
2745 Chain Bridge Rd. # 222
Vienna, VA 22181-4874

Architect:
Garrison Architects
45 Main Street # 1026
Brooklyn NY 11221
718 506 1200(F)/718210(F)
garrisonarchitects.com

Structural Engineer:
Austin Engineering Associates
248 W 81st St #301 4th Fl
NY 10021
212 324-8965

Modular Engineer:
Mark Line Industries of Pennsylvania
502 Alexander Drive Ephrata PA 17522
717 732 1362(F)/73215(F)

PROTOTYPE FOR URBAN INTERIM HOUSING UNITS

**BROOKLYN, NY
PROJECT NO. 399679**

**95% Construction Documents
JULY 01, 2013**

RED CROSS PLACE

**PROTOTYPE
Urban Interim
Housing Units**

117 Cadman Plaza East
Brooklyn, NY 11201



US Army Corps Of Engineers
New York District

Design / Build:

Construction Manager:
American Manufactured
Structures & Services
2740 Chain Bridge Rd/No 220
Vienna, VA 22181-5378

Architect:
Garrison Architects
45 Main Street/No 1026
Brooklyn NY 11201
718 596 8300(T)/8310(F)
garrisonarchitects.com

Structural Engineer:
Anastos Engineering Associates
240 W 35th St #301
New York, NY 10001
212 714-0993

Modular Engineer:
Maxx Line Industries of
Pennsylvania
51687 County Road 133
Bristol, IN 46507
574-825-5851

MEP Site Engineer:
Plus Group Consulting
Engineering P.L.L.C
231 West 29th St, Suite 706
New York, NY 10001
212-233-2700

Civil Engineer:
Wohl & O'Mara, L.L.P.
Civil Engineers & Land Surveyors
544 Vanderbilt Ave
Staten Island, NY 10304
718-448-7456

**100% CONSTRUCTION
DOCUMENTS**

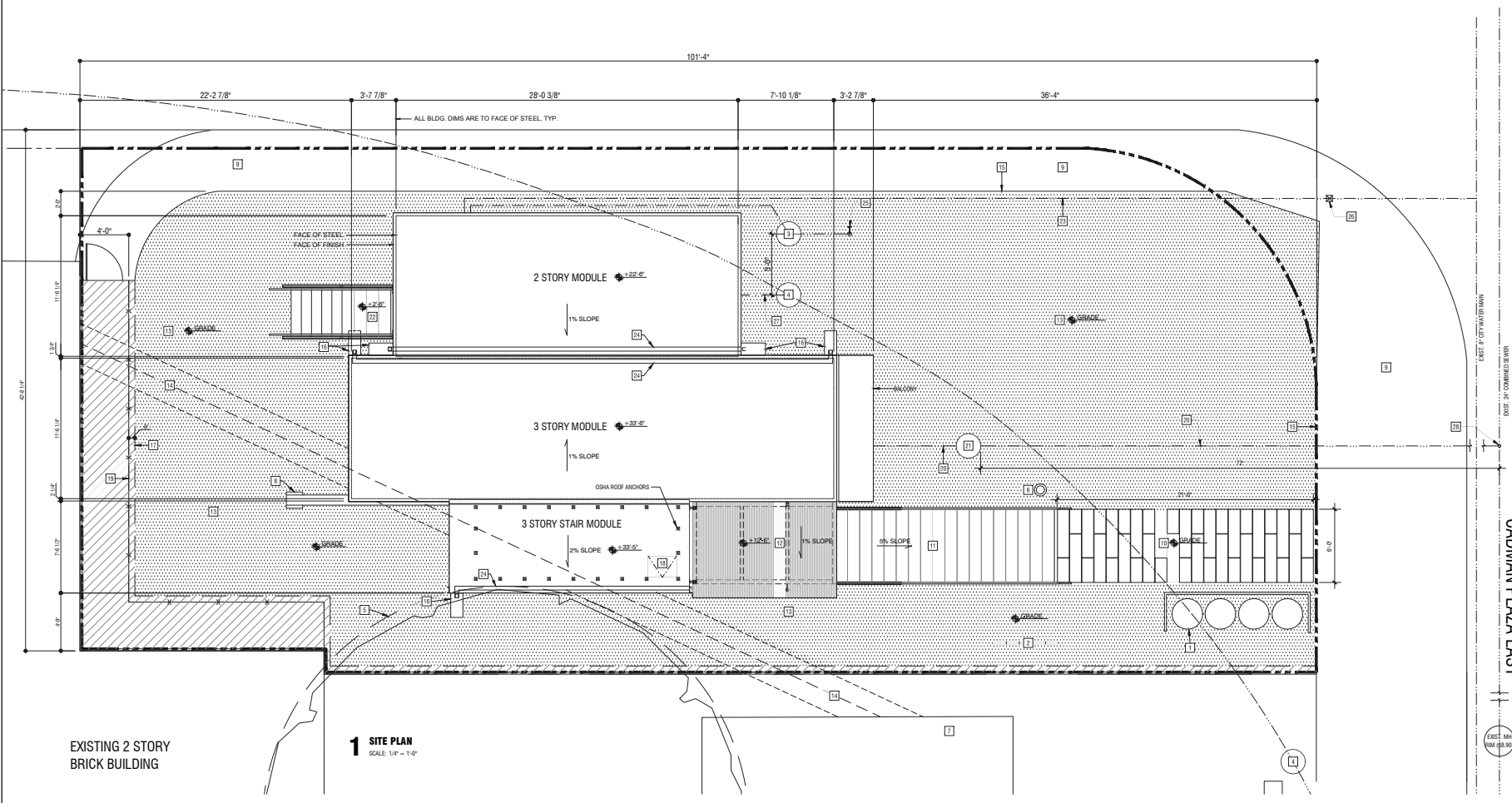
Sheet Scale: 1/4" = 1'
Date: 08.09.2013
Project#: 1307
Drawn By: JS/MF
Checked By: JG

Seal & Signature:



Title:
SITE PLAN

Drawing No.:
A-001.00



EXISTING 2 STORY
BRICK BUILDING

1 SITE PLAN
SCALE: 1/4" = 1'-0"

GENERAL NOTES

1. SEE FOUNDATION PLAN FOR FOUNDATION LOCATION
2. REMOVE EXISTING ASPHALT

**PROPOSED WORK TO BE FILED AS A
TEMPORARY SITE CONNECTION
TO BE APPROVED BY NYC DEP**

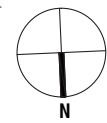
KEYNOTES

- | | | | | | |
|----|--|----|--|----|---|
| 1 | GARBAGE AREA W/ GARBAGE CAN ENCLOSURE | 11 | RAMP | 20 | PROPOSED 6" ØHD STANDARD SANITARY CONNECTION AS PER NYC DEP STANDARDS |
| 2 | NEW BIKE RACK | 12 | CANDOPY | 21 | PROPOSED MANHOLE WITH 6" TRAP |
| 3 | MANHOLE WITH CHECK VALVE | 13 | GRAVEL | 22 | EXTERIOR STAR (UTILITY ROOM) |
| 4 | EXISTING ELECTRICAL MANHOLE TO REMAIN | 14 | EXISTING CONCRETE ELECTRICAL RACEWAY TO REMAIN | 23 | PROPOSED WATER MAIN CONNECTION LINE |
| 5 | EXISTING TREE | 15 | REMOVE EXISTING CHAIN LINK FENCE AT SIDEWALK LINE | 24 | GUTTER |
| 6 | BOLLARD - EXTERIOR 36" TALL LED (SEE LIGHTING PLAN FOR FURTHER DETAIL) | 16 | 12" X 24" CONCRETE SPLASH PAD | 25 | PROPOSED FIRE DEPARTMENT CONNECTION "AUTO SPR" |
| 7 | EXISTING GENERATOR ON CONC. SLAB | 17 | CUT ASPHALT CLEARLY ALONG THE LINE | 26 | CURB VALVE |
| 8 | FOUNDATION PER & STRUCT. BEAM BEAM TO RECEIVE 18R W/ TUMESCENT PAINT | 18 | ROOF HATCH | 27 | NEW ELECTRIC SERVICE LINE |
| 9 | EXISTING SIDEWALK | 19 | PROVIDE 6'-0" HIGH CHAIN LINK FENCE ENCLOSURE AT 4' WIDE ACCESS WALKWAY WITH CHAIN LINK EXIT GATE AT PROPERTY LINE. PROVIDE PANIC HARDWARE WITH METAL SHIELD FOR SECURITY AT EXIT GATE | 28 | PROPOSED D.I.P. RISER @ ATOP EXIST. 24" COMBINED SEWER AS PER NYC DEP STANDARDS |
| 10 | PRECAST CONCRETE PAVERS | | | | |

LEGEND

- X-X- NEW CHAIN LINK FENCE
- - - - - PROPERTY LINE
- /// EXISTING ASPHALT TO REMOVE
- NEW PEA GRAVEL
- SEWER SERVICE
- WATER SERVICE
- EXISTING ELECTRIC LINE
- NEW ELECTRIC LINE

GRAPHIC SCALE



PROTOTYPE Urban Interim Housing Units

117 Cadman Plaza East
Brooklyn, NY 11201



US Army Corps of Engineers
New York District

Design / Build:

Construction Manager:
American Manufactured
Structures & Services
2740 Chain Bridge Rd/No 220
Vienna, VA 22181-5378

Architect:
Garrison_Architects
45 Main Street/No 1026
Brooklyn NY 11201
718 596 8300(T)/8310(F)
garrisonarchitects.com

Structural Engineer:
Anastus Engineering Associates
240 W 35th St #301
New York, NY 10001
212 714-0993

Modular Engineer:
Mark Line Industries of
Pennsylvania
51687 County Road 133
Bristol, IN 46507
574-825-5851

MEP Site Engineer:
Plus Group Consulting
Engineering P.L.L.C.
231 West 29th St, Suite 706
New York, NY 10001
212-233-2700

Civil Engineer:
Wohl & O'Mara, L.L.P.
Civil Engineers & Land Surveyors
544 Vanderbilt Ave
Staten Island, NY 10304
718-448-7456

100% CONSTRUCTION DOCUMENTS

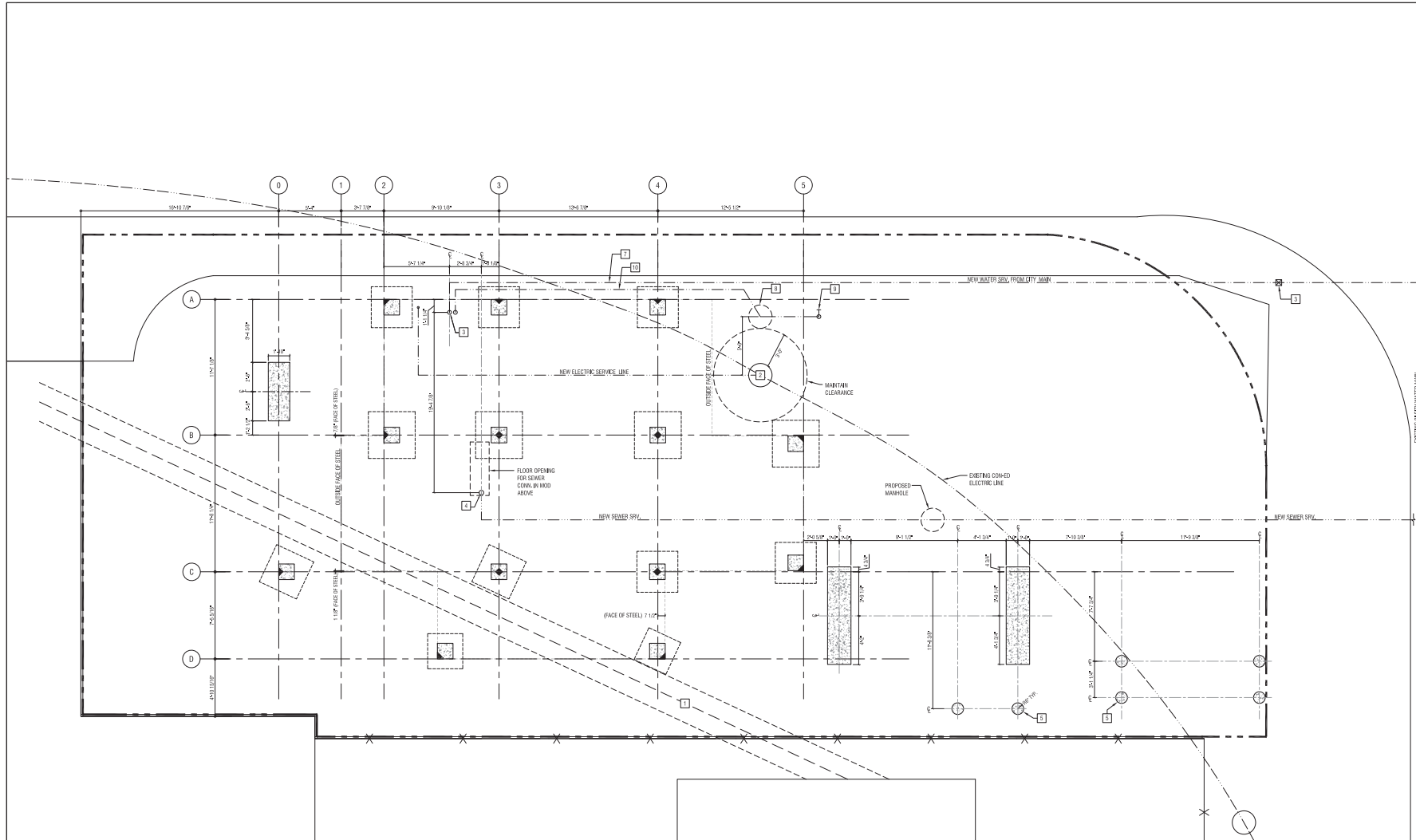
Sheet Scale: 1/2" = 1'
Date: 08.09.2013
Project#: 1307
Drawn By: JS
Checked By: JG

Seal & Signature:



Title:
FOUNDATION PLAN

Drawing No.:
A-002.00



1 FOUNDATION PLAN SCALE: 1/4" = 1'-0"

GENERAL NOTES

1. SURVEY AND COMPARE LOCATION OF ALL SITE ELEMENTS & UTILITIES
2. LAYOUT PERKS TO AVOID SITE UTILITIES. LAYOUT TO BE COMPLETED AND APPROVED BY ARCHITECT BEFORE PROCEEDING.
3. SHORE EXISTING UTILITIES TO MAINTAIN SUPPORT AND SOIL STABILITY.
4. ALL SHORING METHODS TO BE REVIEWED BY STRUCTURAL ENGINEER BEFORE PROCEEDING.
5. HAND EXCAVATION ONLY WITHIN THREE FEET OF EXISTING SITE UTILITIES
6. SEE STRUCTURE DRAWINGS FOR DETAILS
7. ARCH FOUNDATION PLAN FOR LOCATION ONLY
8. REPLACE SIDEWALKS AND PAVING REMOVED FOR UTILITY INSTALLATION TO MATCH EXISTING THICKNESS, COLOR AND FINISH PERFORMING CURB DETAIL
9. NEATLY SAW CUT ALL PAVING & SIDEWALK REMOVALS AND MODIFICATION.
10. REMOVE ALL EXISTING ASPHALT, NEATLY SAW CUT AT EDGES ADJOINING OTHER ASPHALT AREAS TO REMAIN.
11. FILL AND COMPACT FINISH GROUND
12. NOTES FOR FOUNDATION EXCAVATION AND BACKFILL FOR STRUCTURAL FRODICE: ENTIRE SITE WITH 12" OF COURSE GRAVEL BASE AND 4" OF WASHED PEA GRAVEL, GRAVEL TO MATCH ADJACENT GRADE

KEYNOTES

- 11 EXISTING BELOW GRADE ELECTRIC RACEWAY, SUPPORT AND PROTECT
- 12 EXISTING ELECTRICAL MANHOLE, VERIFY LOCATION, MAINTAIN CLEARANCE
- 13 NEW INCOMING WATER SERVICE, STOP 1/2" ABOVE GRADE FOR MODULE TIE IN, PROMILE HEAD TRACE TO 4" BELOW GRADE
- 14 NEW SEWER CONNECTION, STOP 1/2" ABOVE GRADE FOR MOD TIE INS
- 15 2'-4" CONCRETE SONOTUBE (BELOW GRADE)
- 16 CURB VALVE
- 17 PROPOSED WATER SERVICE LINE
- 18 PROPOSED MANHOLE WITH CHECK VALVE
- 19 3" FIRE DEPARTMENT CONNECTION MULTI SPLY
- 20 NEW SPRINKLER SERVICE

LEGEND

- SEWER SERVICE
- WATER SERVICE
- EXISTING COINED ELECTRIC LINE
- NEW ELECTRIC LINE

GRAPHIC SCALE





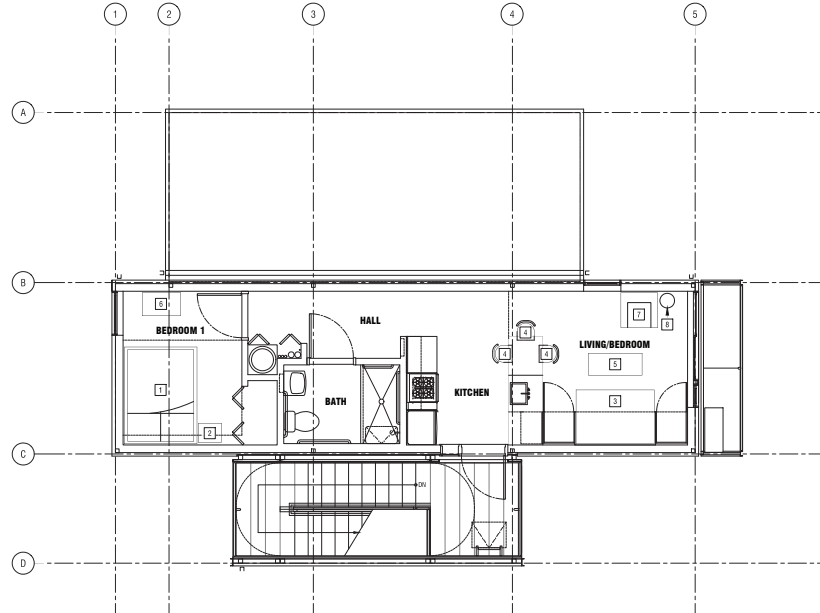
KEY NOTES

- 1 BED (FULL)
- 2 NIGHT STAND
- 3 SOFA BED
- 4 DINING CHAIR
- 5 COFFEE TABLE
- 6 3 DRAWER CHEST
- 7 CHAIR
- 8 FLOOR LAMP
- 9 BASKET WIRE SHELVING

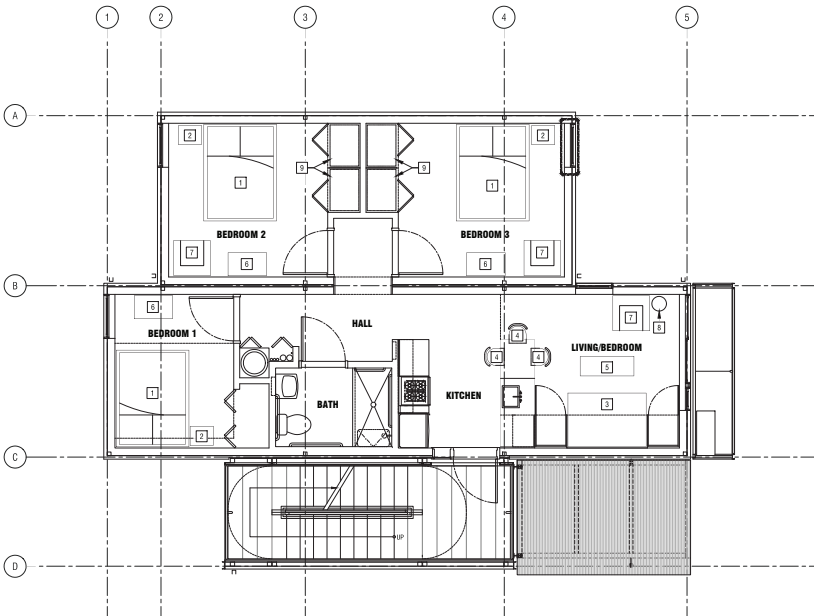
GENERAL NOTES

- 1 SEE SPEC FOR FURNITURE DETAILS

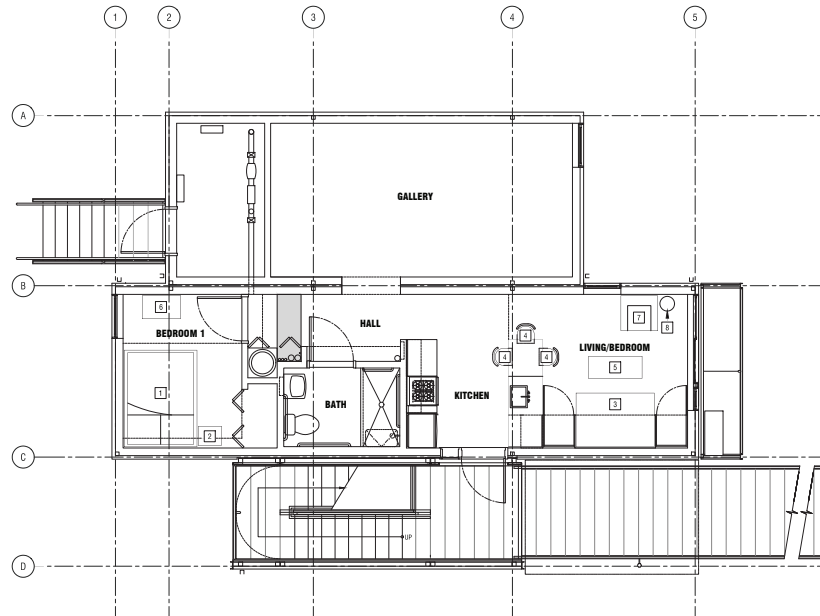
GRAPHIC SCALE



3 3RD FLOOR PLAN
1/4" = 1'-0"



2 2ND FLOOR PLAN
1/4" = 1'-0"



1 1ST FLOOR PLAN
1/4" = 1'-0"

PROTOTYPE Urban Interim Housing Units

117 Cadman Plaza East
Brooklyn, NY 11201



US Army Corps Of Engineers
New York District

Design / Build:

Construction Manager:
American Manufactured
Structures & Services
2740 Chain Bridge Rd/No 220
Vienna, VA 22181-5378

Architect:

Garrison_Architects
45 Main Street/No 1026
Brooklyn NY 11201
718 596 8300(T)/8310(F)
garrisonarchitects.com

Structural Engineer:

Anastos Engineering Associates
240 W 35th St #301
New York, NY 10001
212 714-0993

Modular Engineer:

Maxx Line Industries of
Pennsylvania
51687 County Road 133
Bristol, IN 46507
574-825-5851

MEP Site Engineer:

Plus Group Consulting
Engineering P. L. L. C
231 West 29th St, Suite 706
New York, NY 10001
212-233-2700

Civil Engineer:

Wohl & O'Mara, L.L.P.
Civil Engineers & Land Surveyors
544 Vanderbilt Ave
Staten Island, NY 10304
718-448-7456

100% CONSTRUCTION DOCUMENTS

Sheet Scale: 1/4" = 1'
 Date: 08.09.2013
 Project#: 1307
 Drawn By: JG
 Checked By: JG

Seal & Signature:

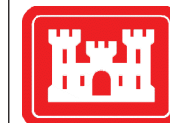


Title:
**1ST, 2ND & 3RD
FURNITURE PLANS**

Drawing No. :
A-102.00

PROTOTYPE Urban Interim Housing Units

117 Cadman Plaza East
Brooklyn, NY 11201



US Army Corps Of Engineers
New York District

Design / Build:

Construction Manager:
American Manufactured
Structures & Services
2740 Chain Bridge Rd/No 220
Vienna, VA 22181-5378

Architect:
Garrison_Architects
45 Main Street/No 1026
Brooklyn NY 11201
718 596 8300(T)/8310(F)
garrisonarchitects.com

Structural Engineer:
Anastos Engineering Associates
240 W 35th St #301
New York, NY 10001
212 714-0993

Modular Engineer:
Maxx Line Industries of
Pennsylvania
51687 County Road 133
Bristol, IN 46507
574-825-5851

MEP Site Engineer:
Plus Group Consulting
Engineering P.L.L.C
231 West 29th St, Suite 706
New York, NY 10001
212-233-2700

Civil Engineer:
Wohl & O'Mara, L.L.P.
Civil Engineers & Land Surveyors
544 Vanderbilt Ave
Staten Island, NY 10304
718-448-7456

100% CONSTRUCTION DOCUMENTS

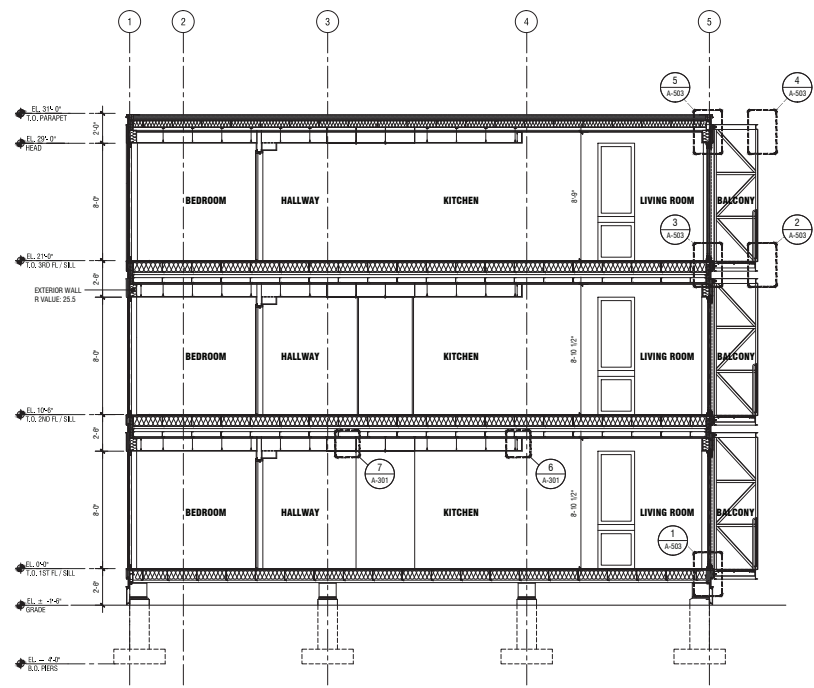
Sheet Scale: 1/4" = 1'
Date: 08.09.2013
Project#: 1307
Drawn By: MF/JS
Checked By: JG

Seal & Signature:

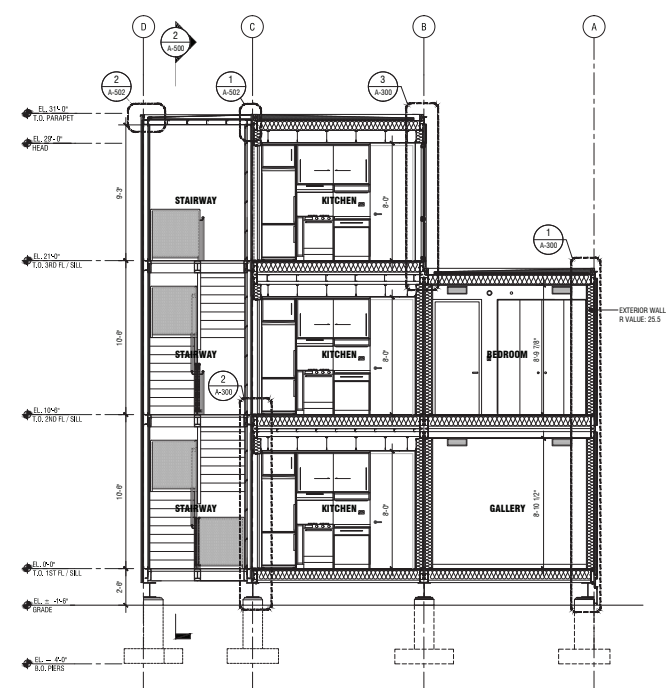


Title:
**BUILDING
SECTIONS**

Drawing No. :
A-201.00



2 BUILDING SECTION
1/4" = 1'-0"



1 BUILDING SECTION
1/4" = 1'-0"

