

Woodhaven Boulevard, Capital Projects

Queens Boulevard to 107 Avenue

Community Board 6

**Transportation, Public Transit,
Street Safety Committee**

September 26, 2024



Table of Contents

1. Background

- 2017 Street Improvement Project (SIP)

2. Performance

3. Upcoming Capital Projects

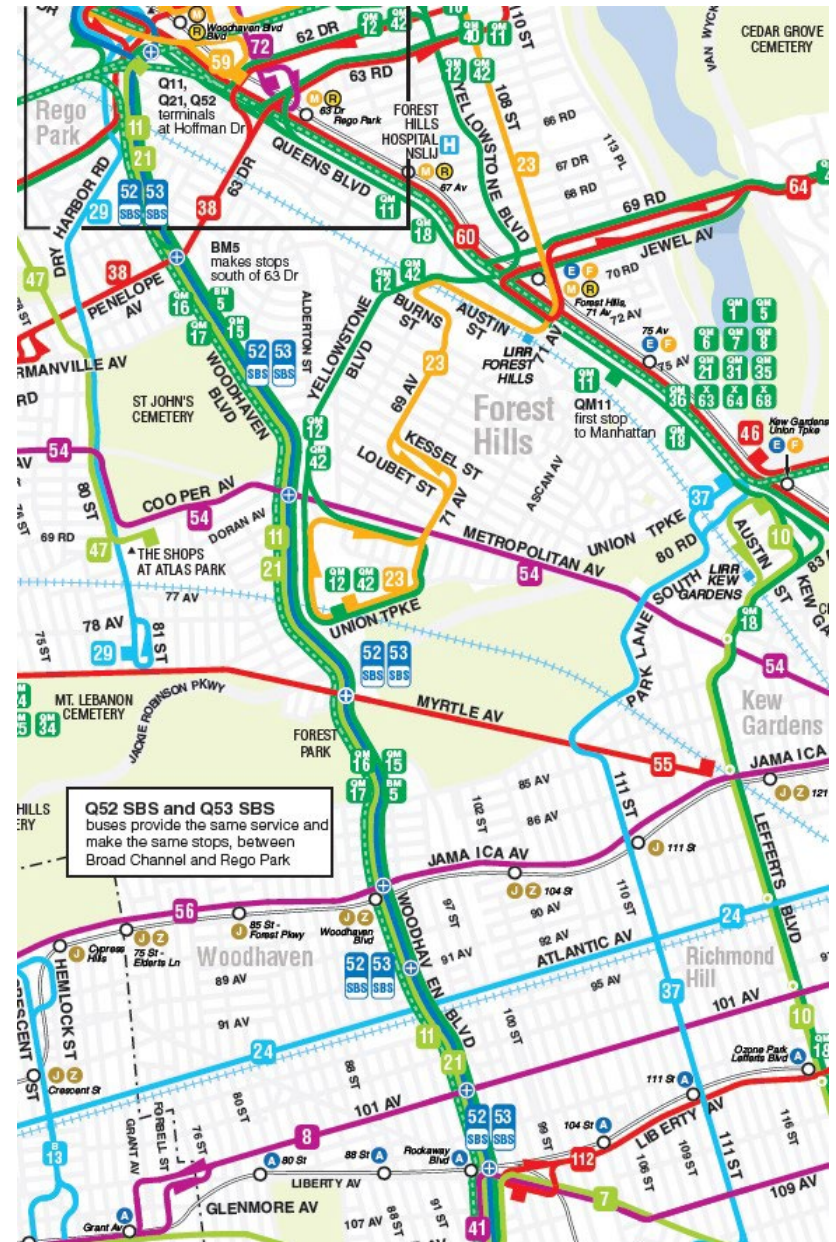
- Woodhaven Blvd Phase B
- Woodhaven Blvd / Metropolitan Av
- Woodhaven Blvd Phase C

4. Next Steps and Discussion

Background

Woodhaven Boulevard

- Major bus corridor hosting the Q52/Q53 Select Bus Service, with:
 - 30,000+ daily riders
 - Connections to Queens Boulevard, the Rockaways
 - 8 subway lines
 - 20 Local and Express bus routes
- Vision Zero Priority Corridor since 2019
- Vision Zero Priority Intersections (3)
 - Woodhaven Blvd & Myrtle Av
 - Woodhaven Blvd & Jamaica Av
 - Woodhaven Blvd & Rockaway Blvd
- 56 people have been killed or severely injured on Woodhaven Boulevard in the past 5 years (2019 - 2023)
 - Compared to 69 over the 5 years prior (2014 - 2018). 19% decrease.



2017 Street Improvement Project

- 6.85 miles of bus lanes installed on Woodhaven Blvd as part of Q52/Q53 Select Bus Service (SBS) launch in 2017:
 - Offset Alignment
 - 3.95 miles
 - Queens Blvd to Park Ln South
 - Median Alignment
 - 1.53 miles
 - Park Ln South to Rockaway Blvd
 - Curbside Alignment
 - 1.37 miles
 - Rockaway Blvd to N Conduit Av



2017 Street Improvement Project

Woodhaven Blvd & 101 Av

- Treatments included:
 - Bus Boarding Islands
 - for 12 bus stops
 - creating one of NYC's first median-running bus corridors



2017 Street Improvement Project

Woodhaven Blvd & 101 Av

- Treatments included:
 - Bus Boarding Islands
 - Bus Stop Amenities
 - Bus Shelters
 - Real-Time Passenger Information & WalkNYC Wayfinding
 - Seating
 - Decorative Fencing



2017 Street Improvement Project

Woodhaven Blvd & 86 Rd

- Treatments included:
 - Bus Boarding Islands
 - Bus Stop Amenities
 - Pedestrian Safety Measures
 - at 14 intersections



2017 Street Improvement Project

Woodhaven Blvd & 81 Rd

- Treatments included:
 - Bus Boarding Islands
 - Bus Stop Amenities
 - Pedestrian Safety Measures
 - Refurbished Medians
 - new ADA compliant pedestrian refuges at 11 intersections



Performance



Woodhaven Blvd – Bus Improvements

- Bus travel times improved an average of 3 minutes in each direction (**10% improvement**).
- On-time performance **improved up to 80%**.
 - northbound Q52/Q53 late arrival shrunk from 52% of the time to 10% of the time (2019 vs. 2017).
- Q52/Q53 SBS average bus speeds are either significantly faster than or about the same as the rest of the borough (2023):
 - **9% faster** than other Queens SBS (AM)
 - **43% faster** than Queens Local/LTD (AM)
 - **5% slower** than other Queens SBS (PM)
 - **26% faster** than Queens Local/LTD (PM)



Woodhaven Blvd – Safety Improvements

Since implementation, all categories of crashes and injuries are down along the corridor (2017 vs. 2023, NYPD):

- Pedestrian injuries are **down 20%**.
- Cyclist injuries are **down 80%**.
- Motor Vehicle crashes are **down 36%**.
- Total Incidents are **down 33%**.

Year	Ped.	Cyclist	Vehicle	Total
2017	30	16	252	298
2018	24	14	222	260
2019	29	12	255	296
2020	22	13	147	182
2021	19	10	153	189
2022	22	14	156	207
2023	24	10	161	199

Woodhaven Blvd – Challenges Remain

- Pedestrian safety measures don't have full impact until solidified with permanent materials.
- Crowding and lack of amenities at bus stops.
- Large sections of the roadway and many of the medians remain in poor condition.
- Some bus operations issues remain.



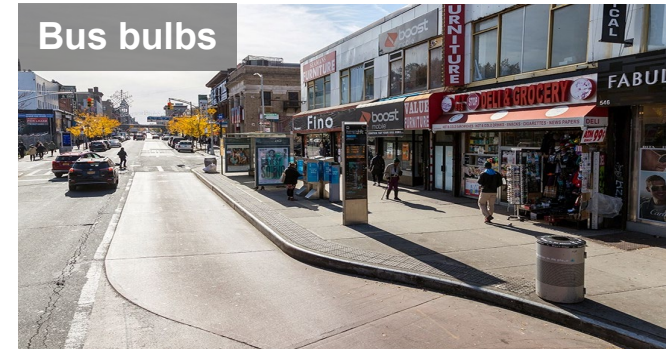
Woodhaven Blvd – Capital Goals / Toolkit

- Build out temporary pedestrian safety measures to solidify them with permanent materials.
- Install additional pedestrian safety measures that couldn't be implemented as part of the in-house 2017 street improvement project.
- Create more pedestrian circulation space and add amenities at bus stops.
- Add trees and other landscape elements throughout corridor.

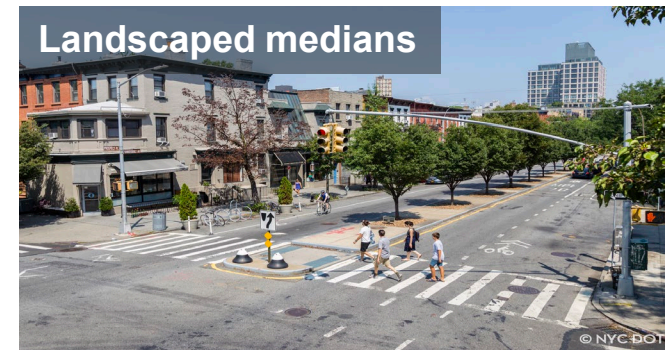
Curb extensions



Bus bulbs



Landscaped medians



Upcoming Capital Projects

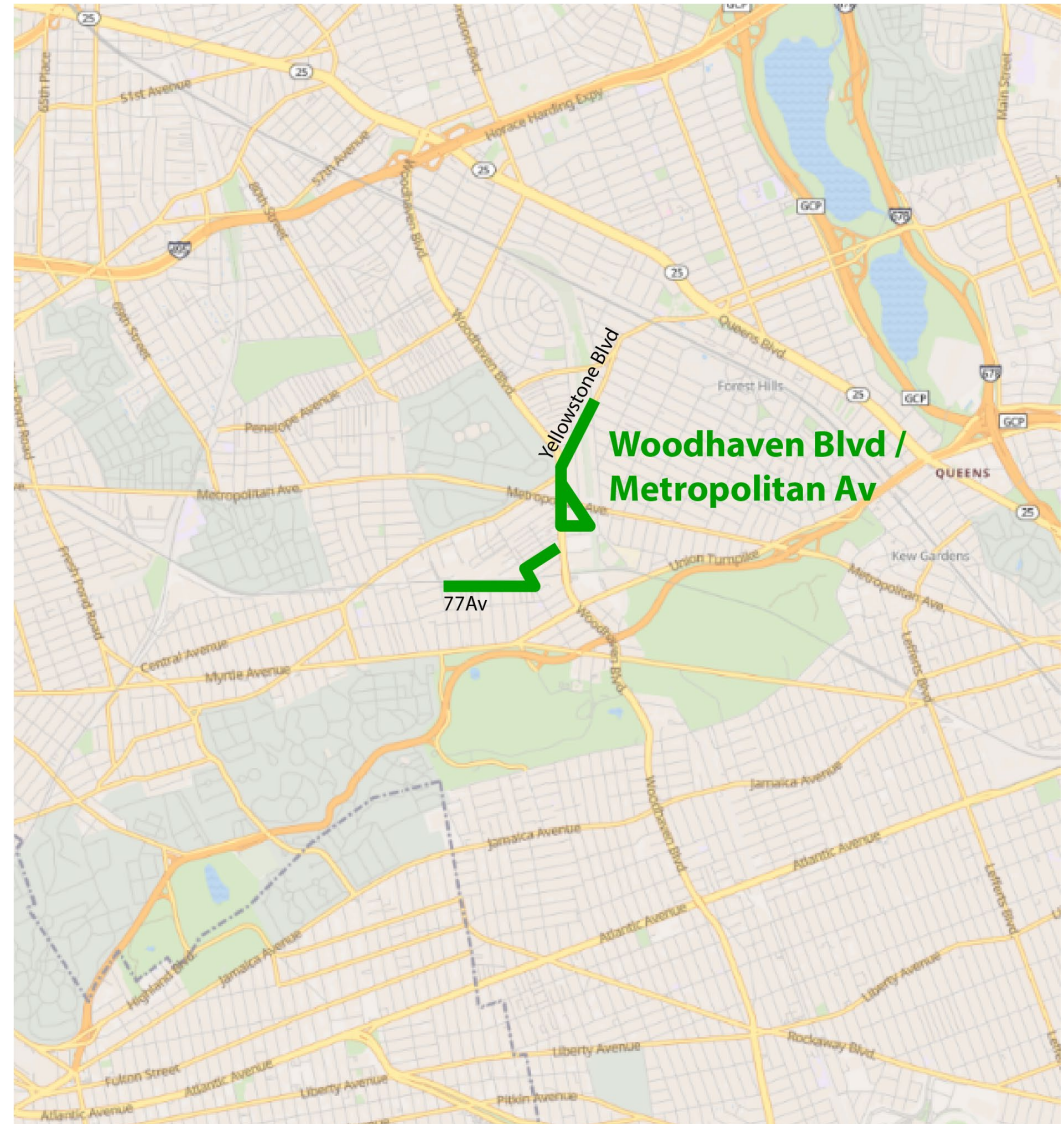
Woodhaven Blvd Capital Projects

- **Woodhaven Blvd Phase B**
 - Union Turnpike to 107 Av
 - Status: Design
 - CB5, CB6, CB9, CB10
 - Est. Construction: 2026
- **Woodhaven Blvd / Metropolitan Av**
 - Woodhaven Blvd from Yellowstone Blvd to 77 Av
 - Status: Scoping
 - CB5, CB6
 - Est. Construction: 2028
- **Woodhaven Blvd Phase C**
 - Queens Blvd to 66 Av
 - Status: Conceptual
 - CB5, CB6
 - Est. Construction: TBD



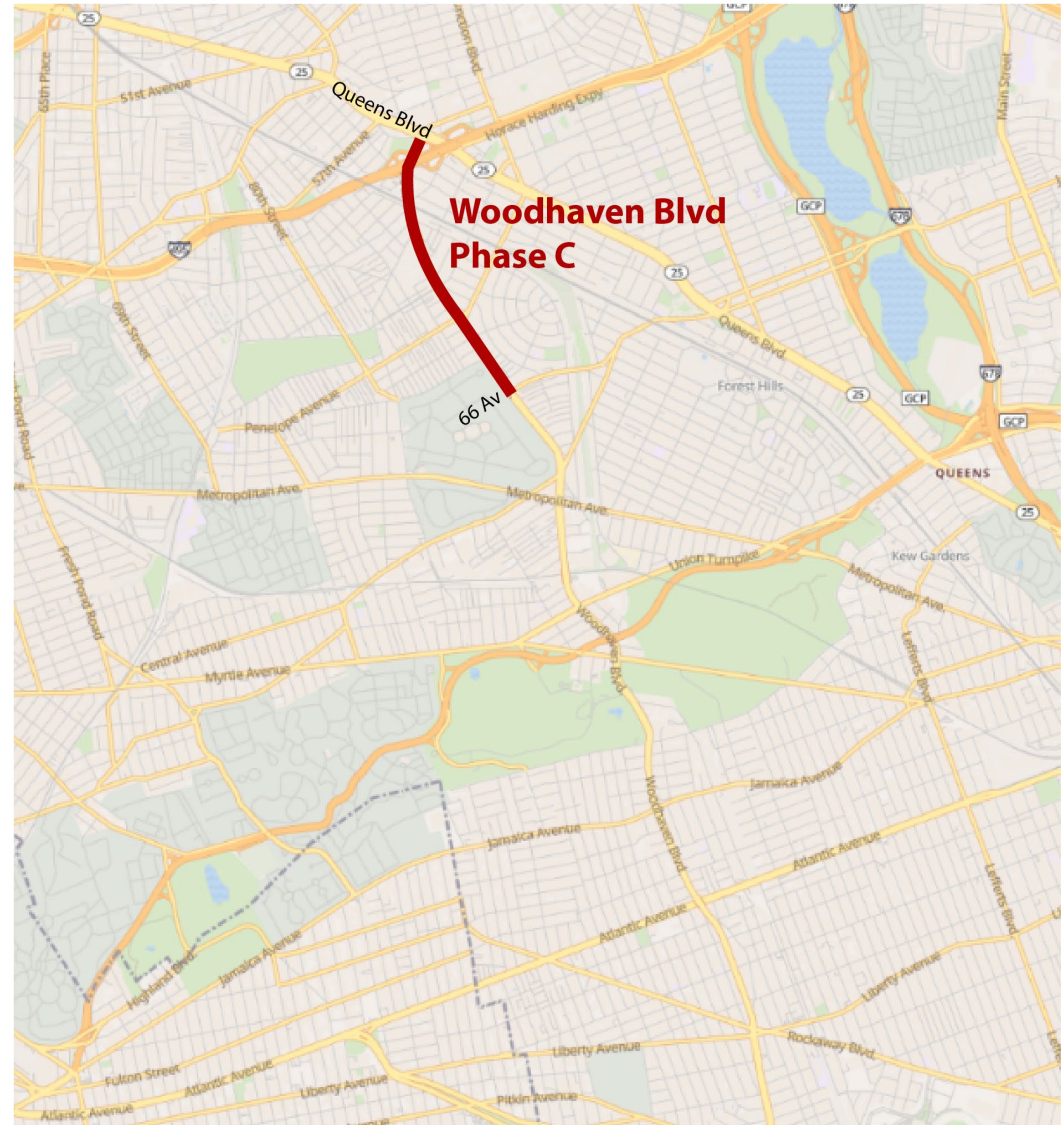
Woodhaven Blvd Capital Projects

- **Woodhaven Blvd Phase B**
 - Union Turnpike to 107 Av
 - Status: Design
 - CB5, CB6, CB9, CB10
 - Est. Construction: 2026
- **Woodhaven Blvd / Metropolitan Av**
 - Woodhaven Blvd from Yellowstone Blvd to 77 Av
 - Status: Scoping
 - CB5, CB6
 - Est. Construction: 2028
- **Woodhaven Blvd Phase C**
 - Queens Blvd to 66 Av
 - Status: Conceptual
 - CB5, CB6
 - Est. Construction: TBD



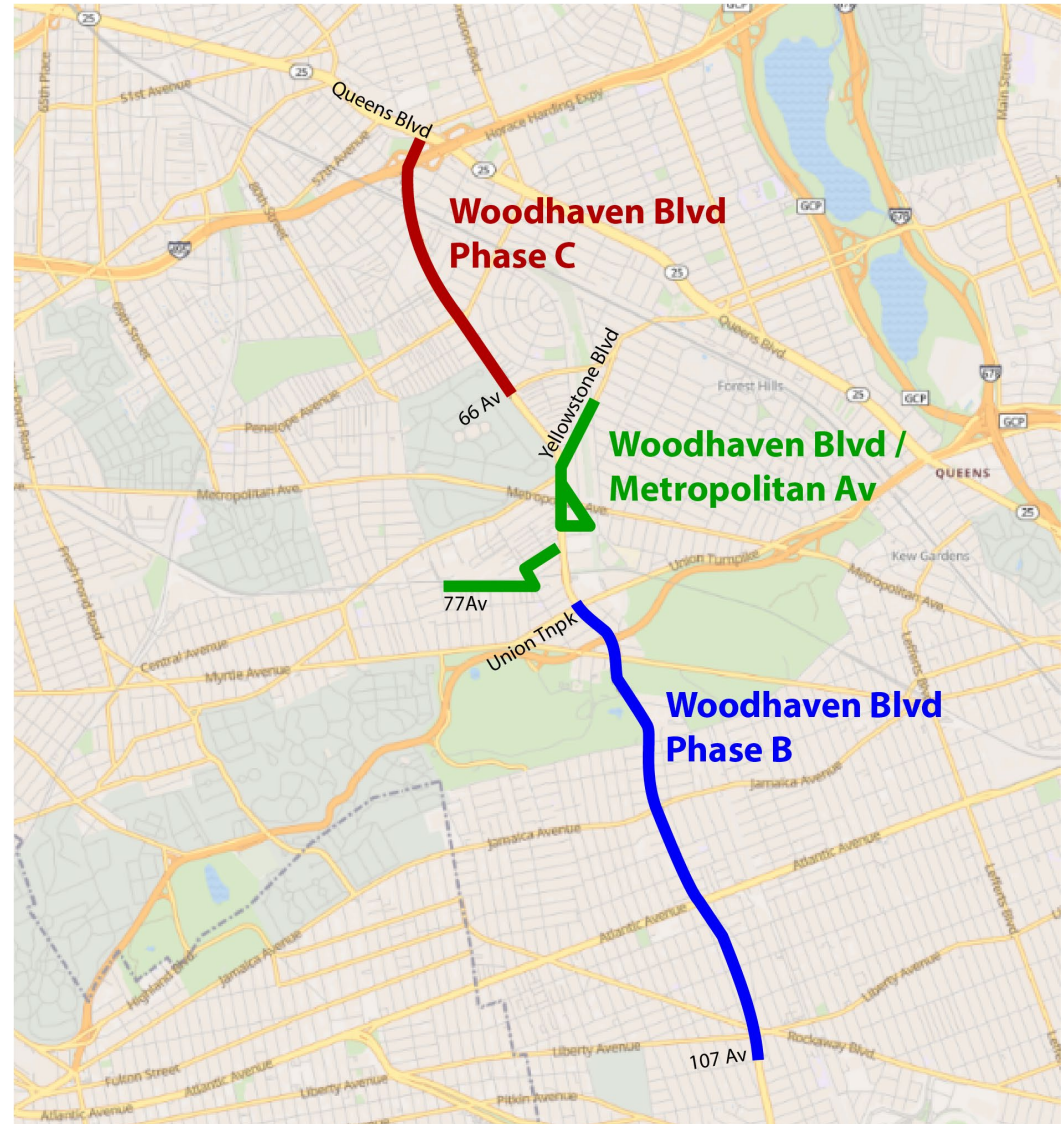
Woodhaven Blvd Capital Projects

- **Woodhaven Blvd Phase B**
 - Union Turnpike to 107 Av
 - Status: Design
 - CB5, CB6, CB9, CB10
 - Est. Construction: 2026
- **Woodhaven Blvd / Metropolitan Av**
 - Woodhaven Blvd from Yellowstone Blvd to 77 Av
 - Status: Scoping
 - CB5, CB6
 - Est. Construction: 2028
- **Woodhaven Blvd Phase C**
 - Queens Blvd to 66 Av
 - Status: Conceptual
 - CB5, CB6
 - Est. Construction: TBD



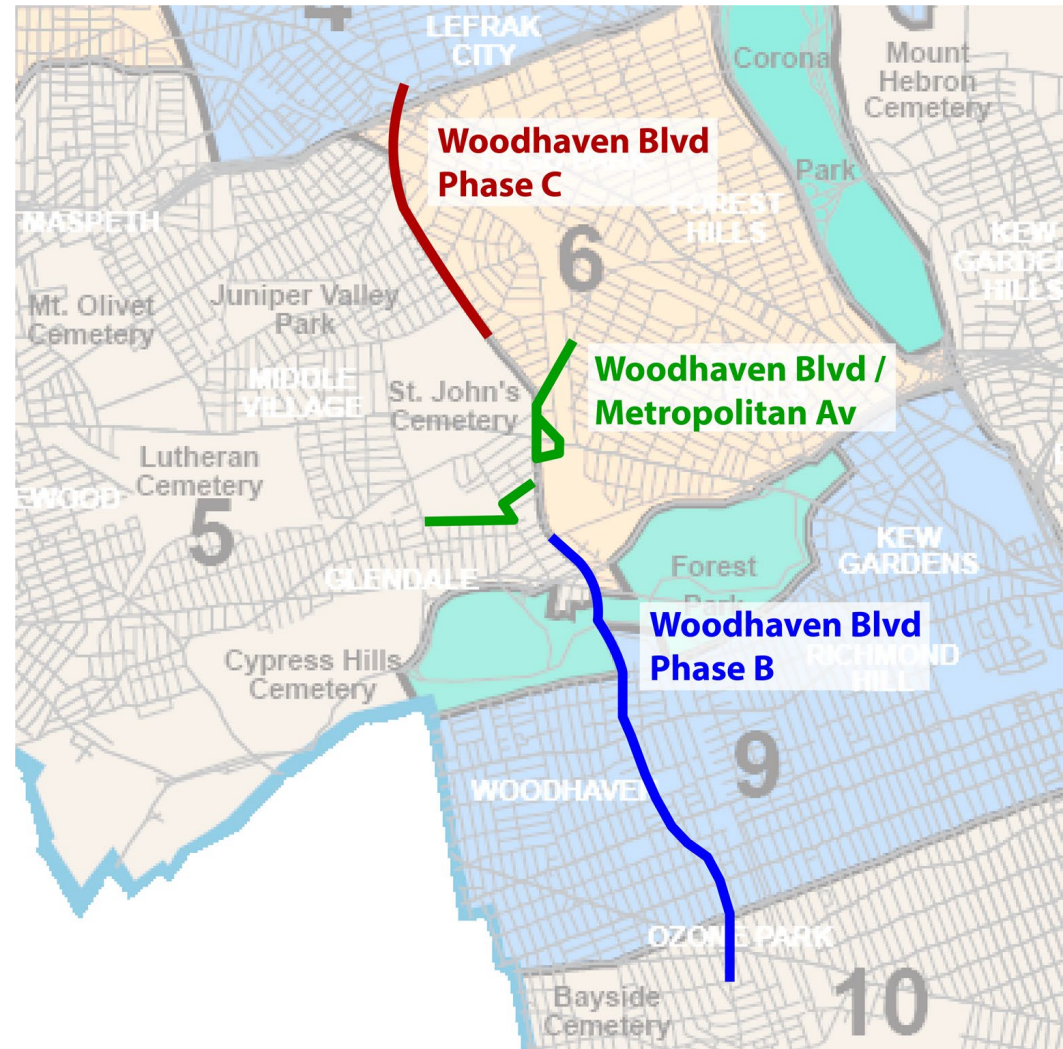
Woodhaven Blvd Capital Projects

- **Woodhaven Blvd Phase B**
 - Union Turnpike to 107 Av
 - Status: Design
 - CB5, CB6, CB9, CB10
 - Est. Construction: 2026
- **Woodhaven Blvd / Metropolitan Av**
 - Woodhaven Blvd from Yellowstone Blvd to 77 Av
 - Status: Scoping
 - CB5, CB6
 - Est. Construction: 2028
- **Woodhaven Blvd Phase C**
 - Queens Blvd to 66 Av
 - Status: Conceptual
 - CB5, CB6
 - Est. Construction: TBD



Woodhaven Blvd Capital Projects

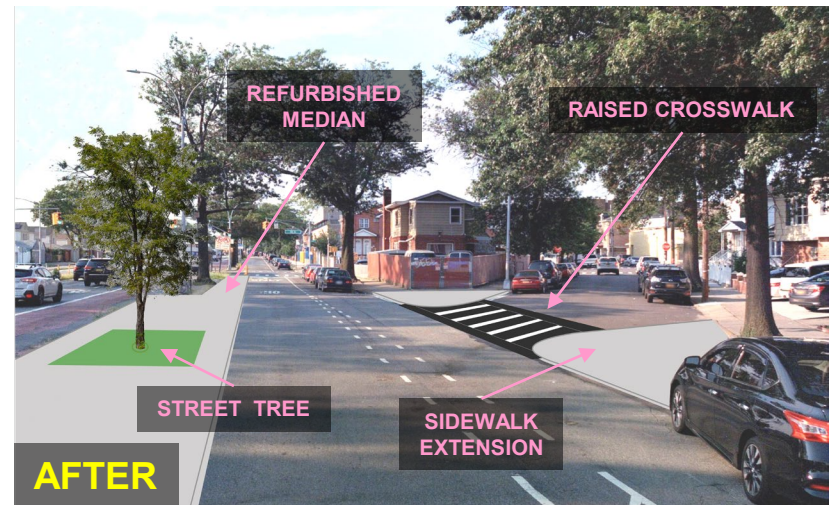
- **Woodhaven Blvd Phase B**
 - Union Turnpike to 107 Av
 - Status: Design
 - CB5, CB6, CB9, CB10
 - Est. Construction: 2026
- **Woodhaven Blvd / Metropolitan Av**
 - Woodhaven Blvd from Yellowstone Blvd to 77 Av
 - Status: Scoping
 - CB5, CB6
 - Est. Construction: 2028
- **Woodhaven Blvd Phase C**
 - Queens Blvd to 66 Av
 - Status: Conceptual
 - CB5, CB6
 - Est. Construction: TBD



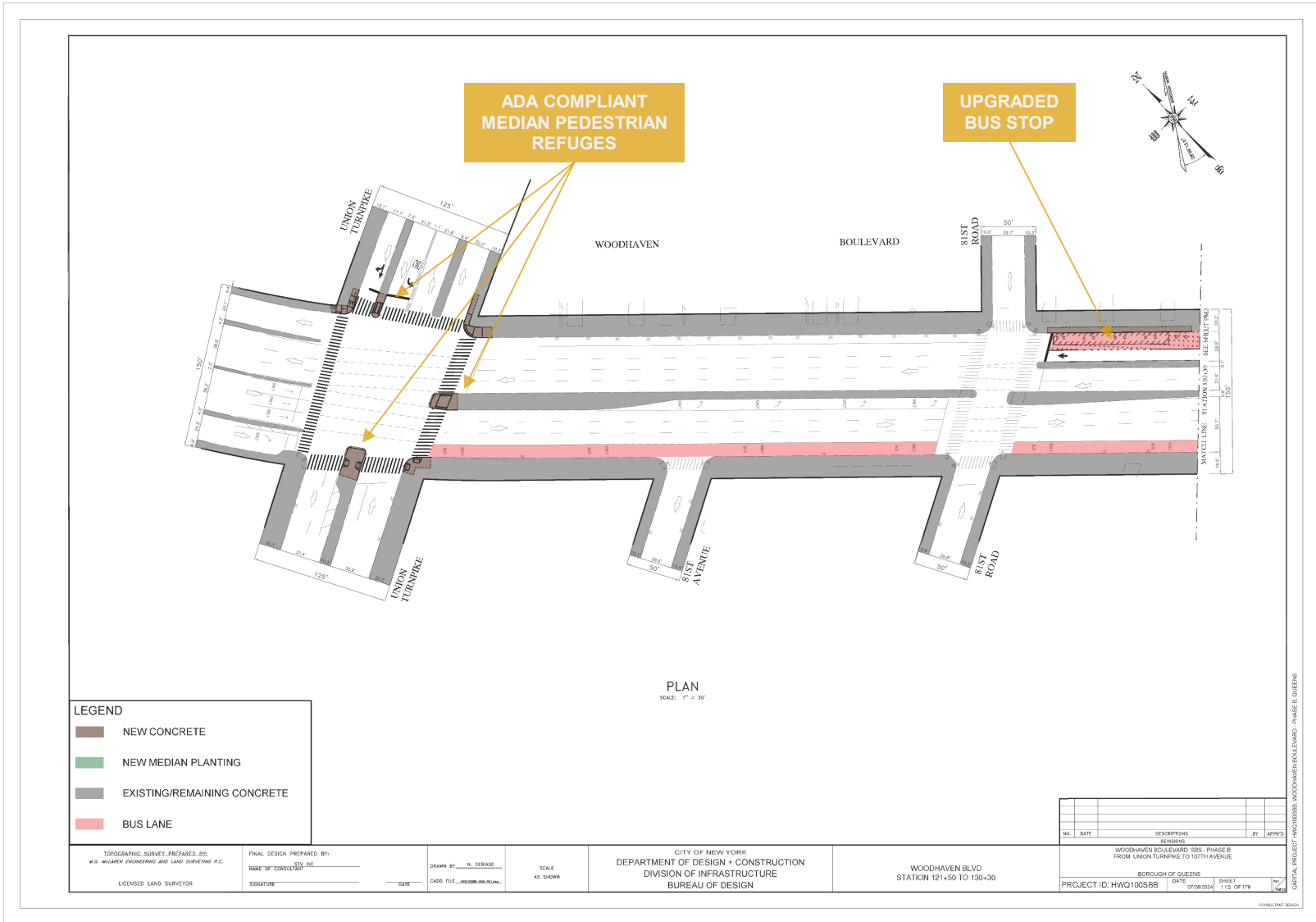
Woodhaven Blvd Phase B

- Maintain:
 - Alignment of bus lanes
 - Operational hours of bus lanes
- Upgrade:
 - 16 Bus Stops
 - 17 Sidewalk Extensions
 - 12 Shortened Crossings
 - 38 Medians/Median Tips
- Add:
 - 7 Additional Crossings
 - 3 Raised Crosswalks
 - 75+ Street Trees
 - 10,000+ ft² Landscaped Area

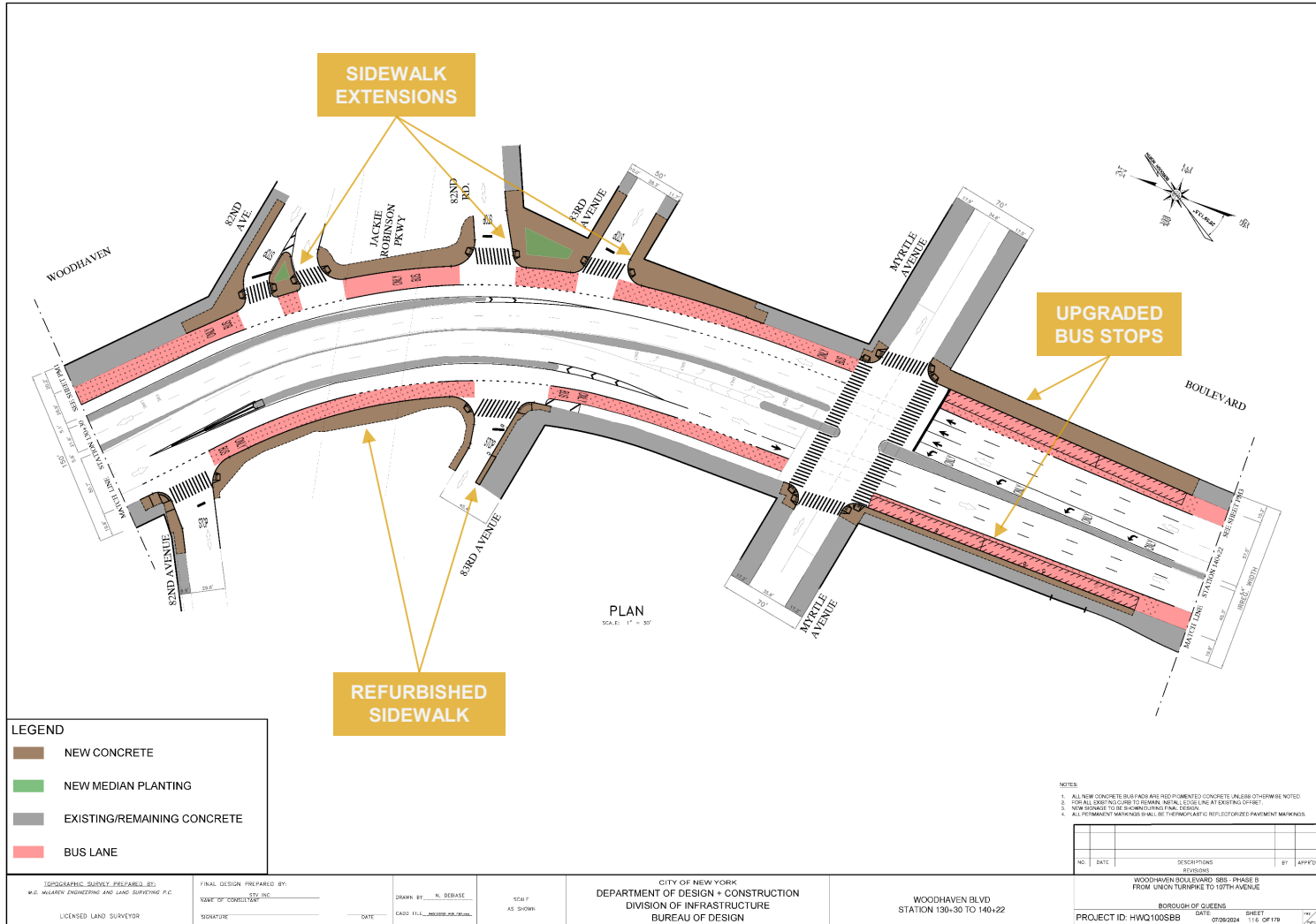
Woodhaven Blvd & 95 St



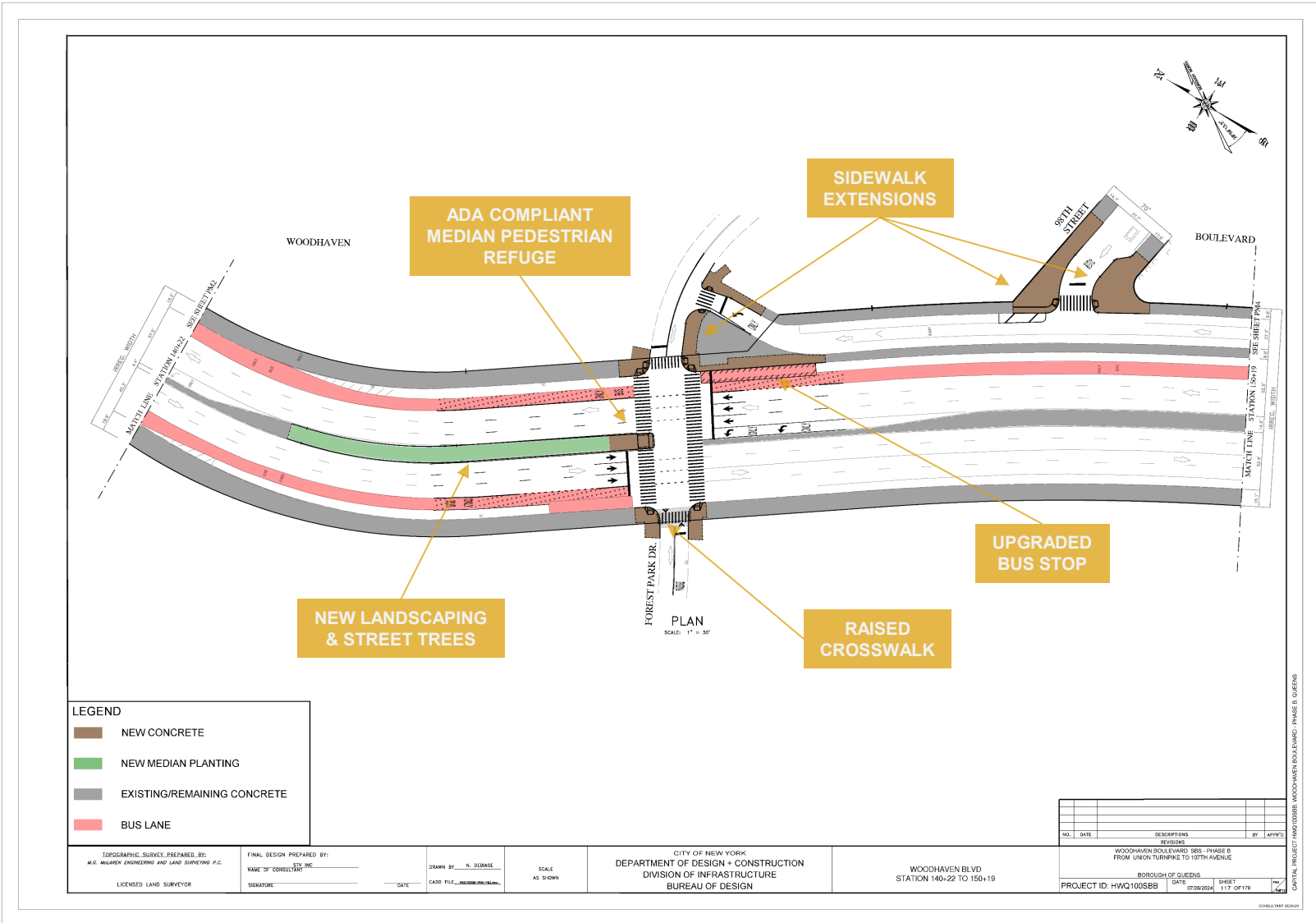
Woodhaven Blvd Phase B – Site Plans



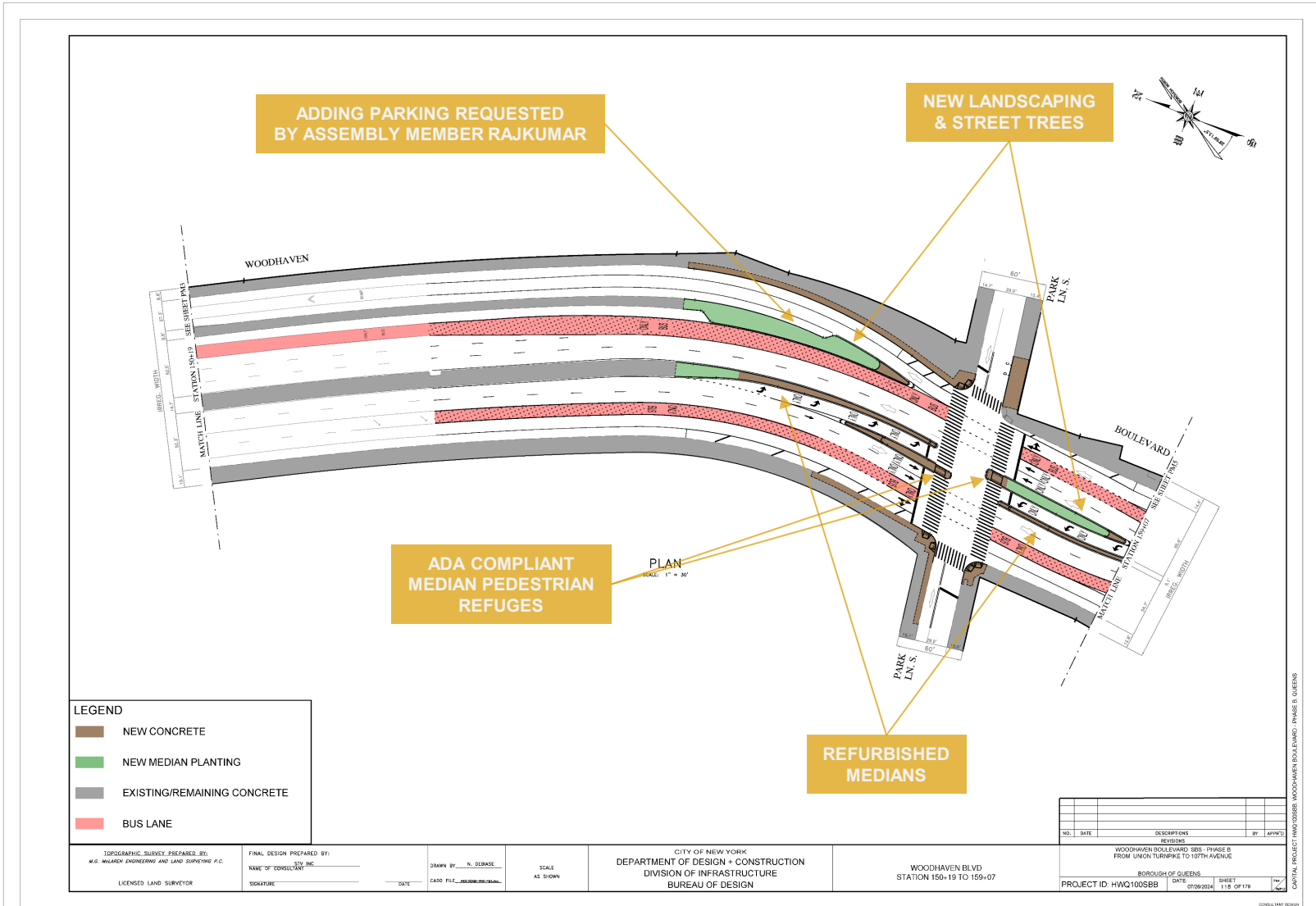
Woodhaven Blvd Phase B – Site Plans



Woodhaven Blvd Phase B – Site Plans



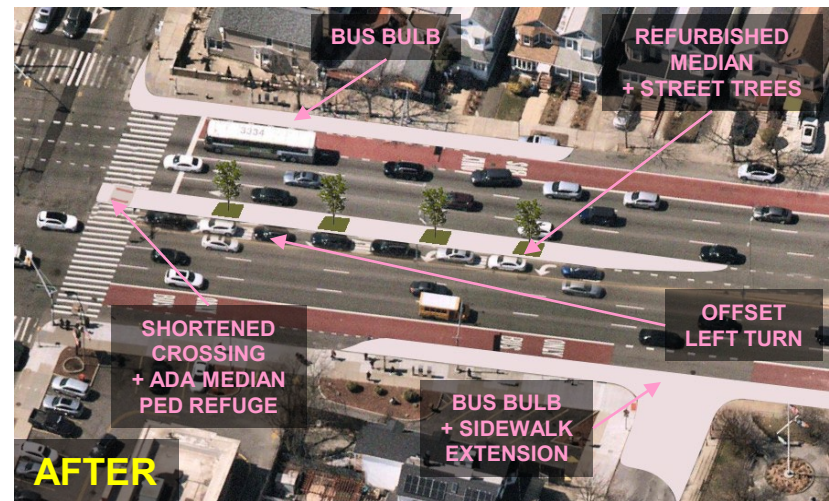
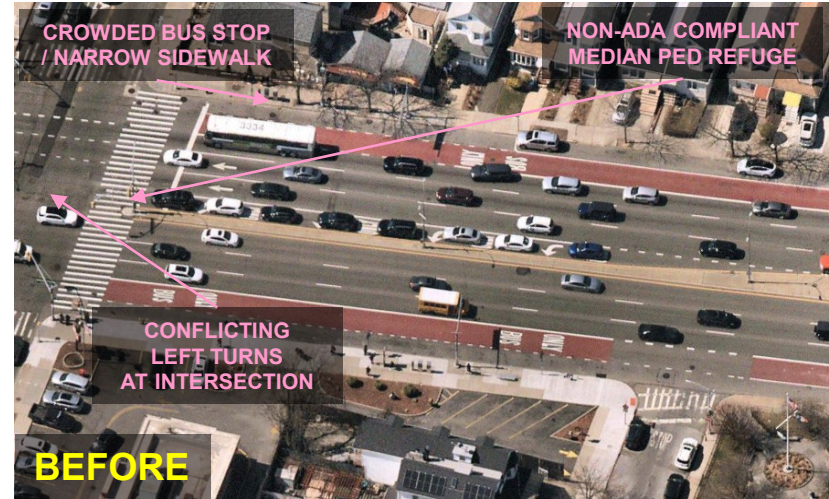
Woodhaven Blvd Phase B – Site Plans



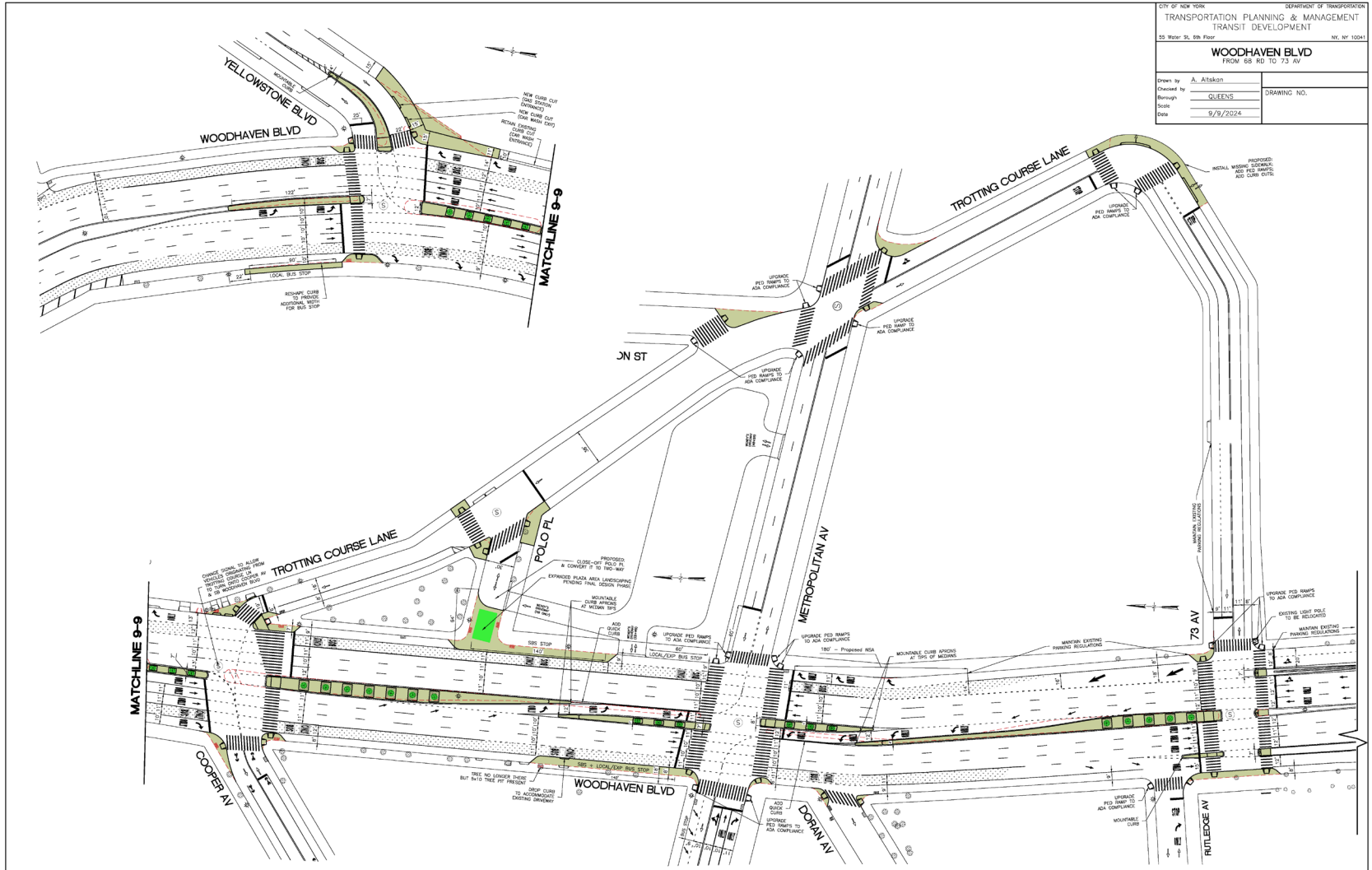
Woodhaven Blvd / Metropolitan Av

Woodhaven Blvd & Metropolitan Av

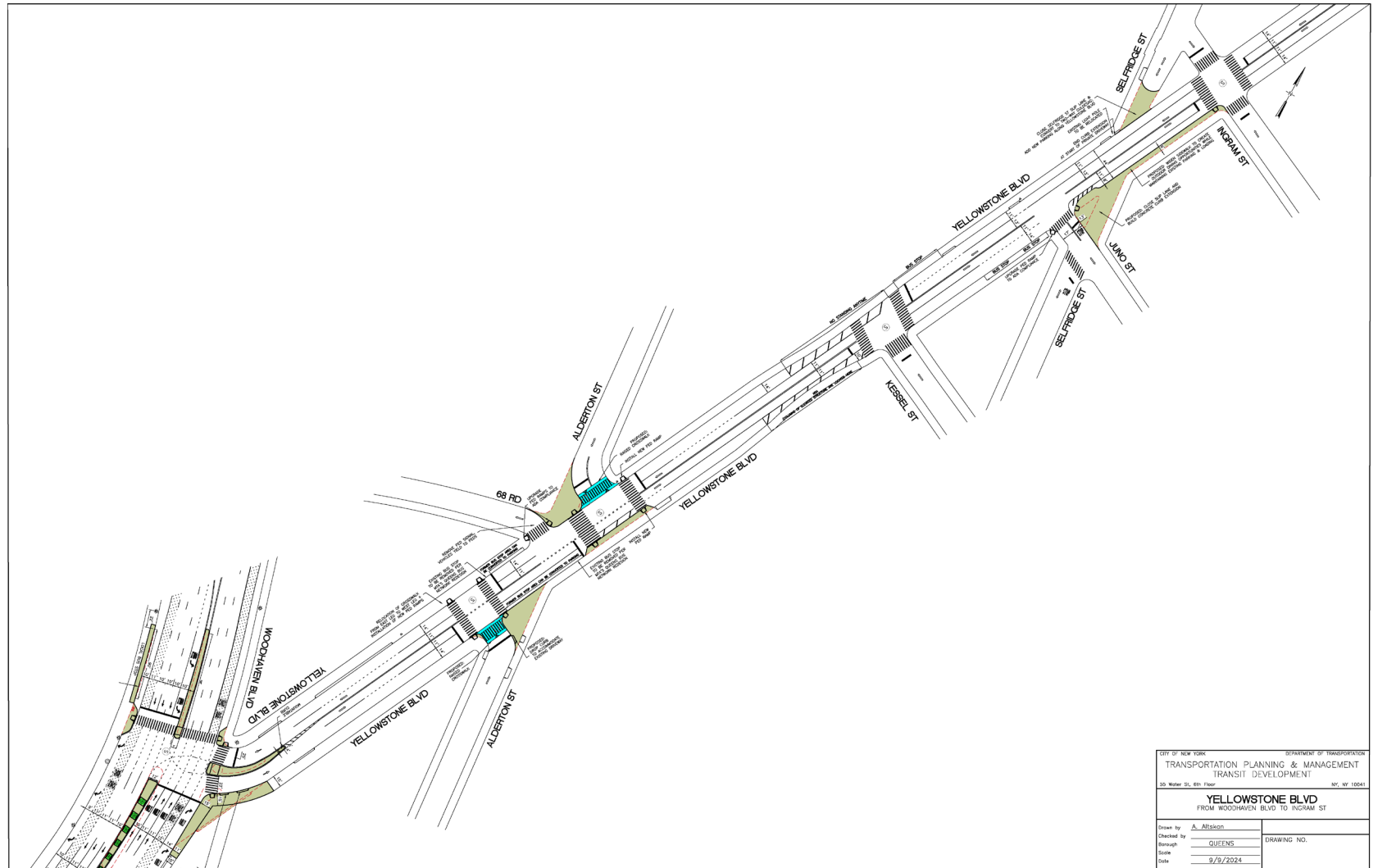
- Maintain:
 - Alignment of bus lanes
 - Operational hours of bus lanes
- Upgrade:
 - 5 Bus Stops (2 Bus Bulbs)
 - 23 Sidewalk Extensions
 - 20 Shortened Crossings
 - 6 Reconstructed Medians
- Add:
 - 7 Additional Crossings
 - 5 Raised Crosswalks
 - 20+ Street Trees



Woodhaven Blvd / Metropolitan Av – Conceptual Plans

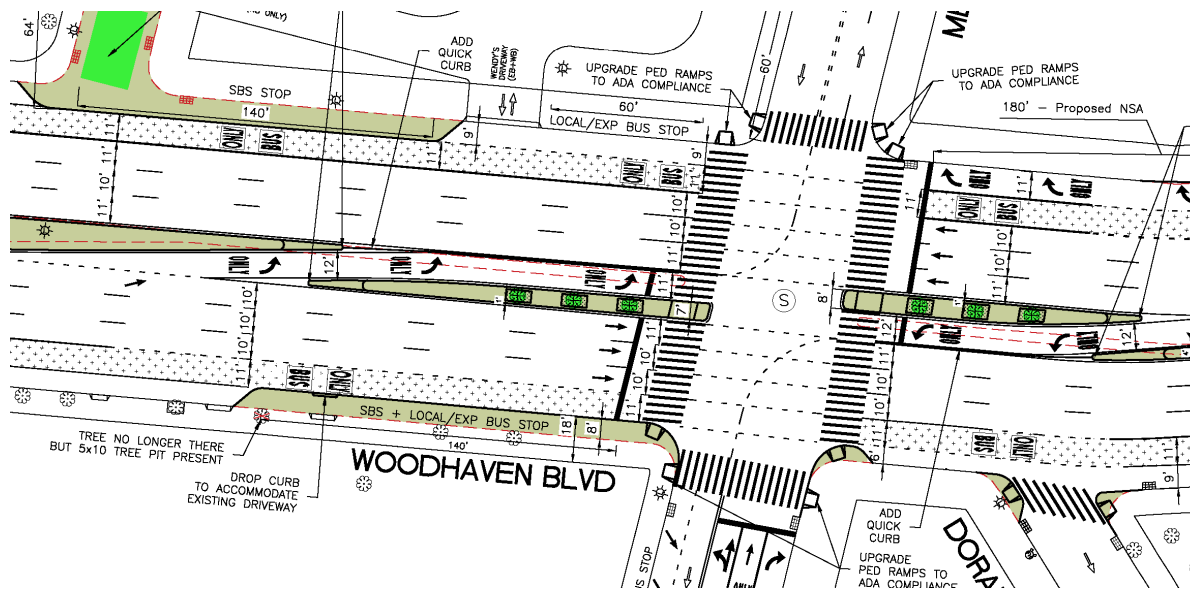


Woodhaven Blvd / Metropolitan Av – Conceptual Plans

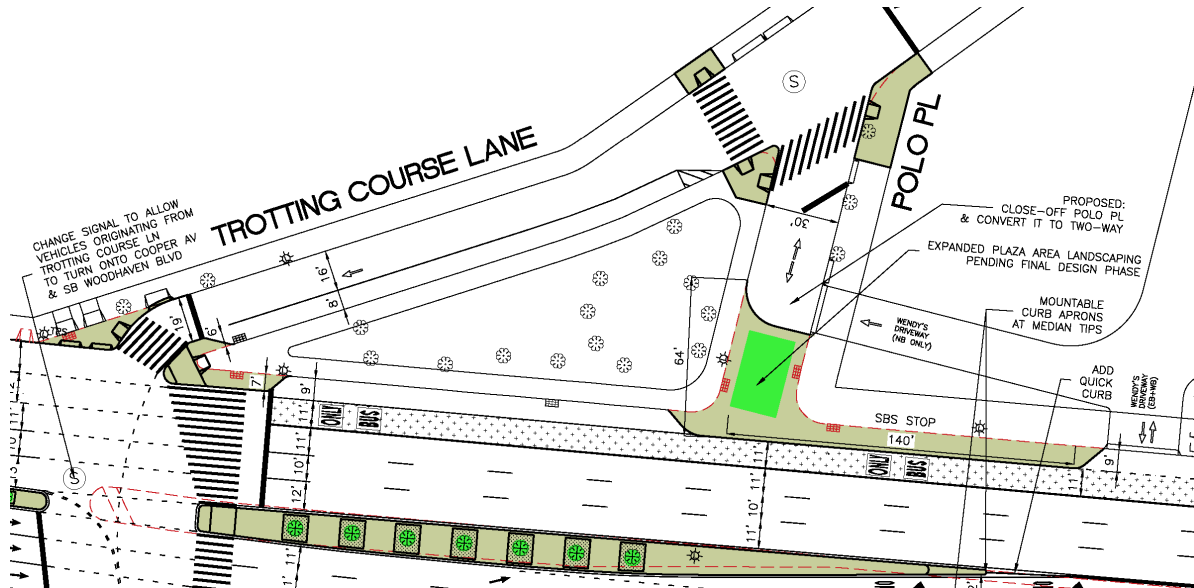


CITY OF NEW YORK		DEPARTMENT OF TRANSPORTATION	
TRANSPORTATION PLANNING & MANAGEMENT			
TRANSIT DEVELOPMENT			
30 Water St, 6th Floor		NY, NY 10041	
YELLOWSTONE BLVD			
FROM WOODHAVEN BLVD TO INGRAM ST			
Drawn by	A. Altshon	DRAWING NO.	
Checked by	GLIFENS		
Title			
Date	9/9/2024		

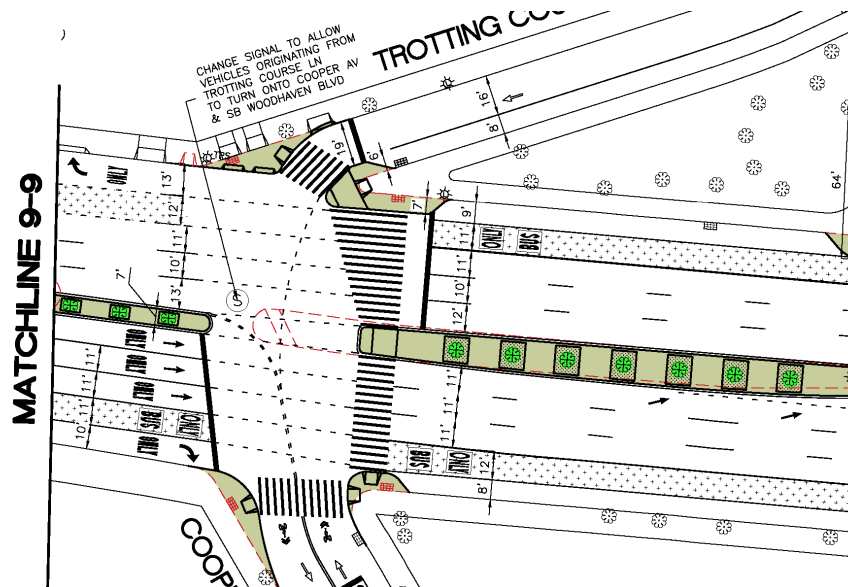
Woodhaven Blvd & Metropolitan Av – Focus



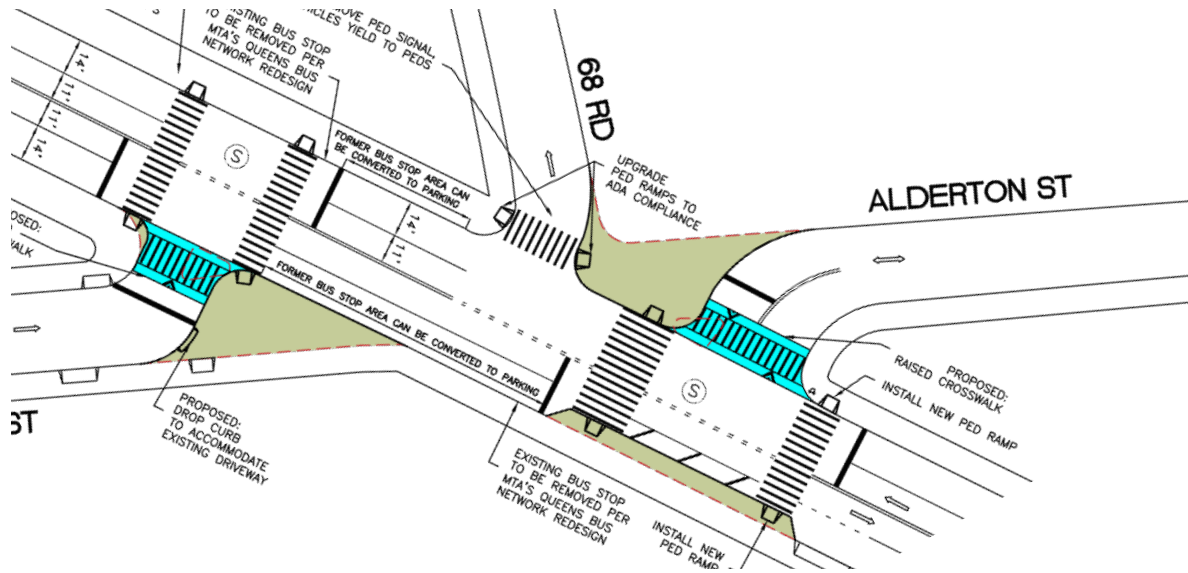
Woodhaven Blvd & Polo Pl – Focus



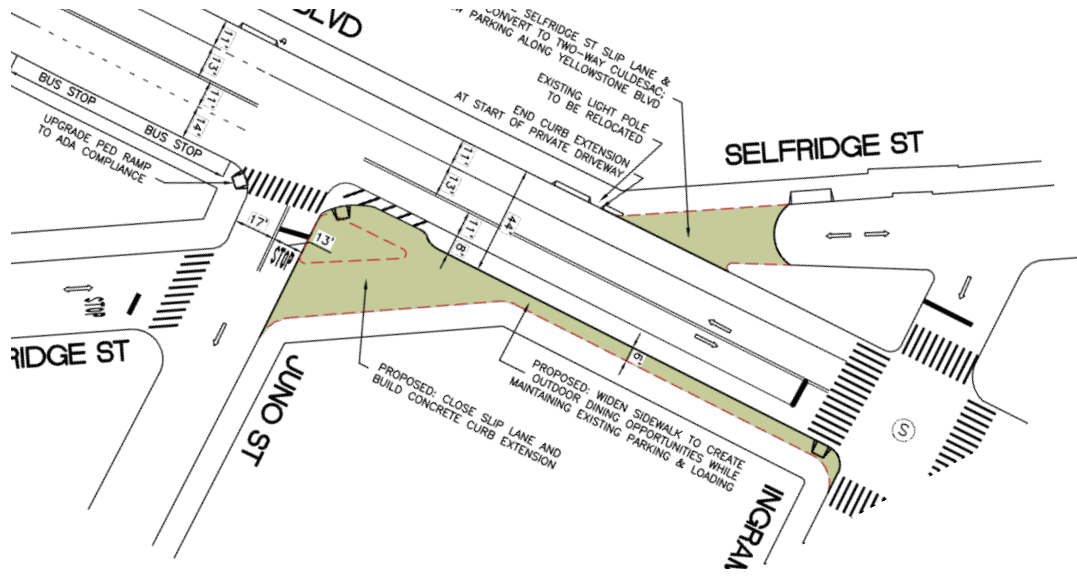
Trotting Course Ln to Cooper Av – Focus



Yellowstone Blvd & Alderton St – Focus



Yellowstone Blvd from Juno St to Ingram St – Focus



Woodhaven Blvd Phase C

- Maintain:
 - Alignment of bus lanes
 - Operational hours of bus lanes
 - Complement improvements made by Woodhaven Blvd Phase B and Woodhaven Blvd / Metropolitan Av.
- Upgrade:
 - Bus Stops
 - Sidewalk Extensions
 - Shortened Crossings
 - Reconstructed Medians
- Add:
 - Crossings
 - Raised Crosswalks
 - Street Trees & Landscaping
 - Improved Lighting

Potential Bus Bulb at Woodhaven Blvd & Penelope Av



Next Steps & Discussion

Next Steps by Project

- **Woodhaven Blvd Phase B**
 - Design Completion: mid-2025
 - Construction Start: early-2026
- **Woodhaven Blvd / Metropolitan Av**
 - Design Start: early-2025
 - Next CB Design Review: late-2026
- **Woodhaven Blvd Phase C**
 - Scoping Start: early-2025
 - Design Start: TBD



Thank You!

Questions?



NYCDOT



nyc_dot



nyc_dot



NYCDOT