



# Correctional Health Services

## CHS Access Report: October 2018

Version: 11/15/2018 (v2)

# I. Table of Contents

|       |                        |    |
|-------|------------------------|----|
| I.    | Table of Contents..... | 1  |
| II.   | Data Dictionary .....  | 2  |
| III.  | Summary Data.....      | 3  |
| IV.   | AMKC.....              | 4  |
| V.    | BKDC.....              | 6  |
| VI.   | EMTC.....              | 8  |
| VII.  | GRVC .....             | 10 |
| VIII. | MDC.....               | 12 |
| IX.   | NIC.....               | 14 |
| X.    | OBCC .....             | 16 |
| XI.   | RMSC.....              | 18 |
| XII.  | RNDC .....             | 20 |
| XIII. | VCBC.....              | 22 |
| XIV.  | WF .....               | 24 |

## II. Data Dictionary

| 1   | CHS Intakes (New Jail Admissions)                    | Definition  |
|-----|--|---|
| 1.1 | Completed CHS Intakes                                | Number of CHS admission to jail encounters completed by a provider  |
| 1.2 | Average time to completion once known to CHS (hours) | Number of hours between check-in by DOC and check-out by CHS for completed intake encounters  |
| 2   | Referrals made to mental health service              | Definition  |
| 2.1 | Referrals made to mental health service              | All book and cases with an initial referral to mental health in reporting month.  |
| 2.2 | Referrals seen within 72 hours                       | For all book and cases where an initial referral to mental health occurs in reporting month, total number of book and cases that had a mental health intake or psychiatric assessment where encounter date was $\leq 72$ hours from referral date.  |
| 2.3 | Percent seen within 72 hours                         | 2.2 divided by 2.1  |
| 3   | Scheduled services by discipline with outcomes       | Definition  |
| 3   | Service Outcomes                                     | <p>Shows all scheduled services by discipline and disaggregates by outcome status recorded in the EHR. Excludes encounters scheduled for discharged patients. Substance Use data sources are still being defined and will be added as a discipline in future reports.</p> <p>-Nursing excludes: finger sticks, wound care and labs collected.</p> <p>-On-Island Specialty includes: Audiology, Cardiology, Dermatology, Dialysis, ENT, Gynecology, Hand Specialist, ID Specialist, Nephrology, Neurology, Optometry, Orthopedic, Podiatry, Post Partum, Pre-Natal, Rehab Physical Therapy, Reproduction, Surgery</p> <p>-Off-Island Specialty includes: Audiology, Breast, Cardiology, Cardiovascular, Chest, Dermatology, Endocrinology, ENT, Gastroenterology, General Surgery, Gynecology, Hand, Hematology, ID/Virology, Neurosurgery, Oncology, Ophthalmology, Oral Surgery, Orthopedic, Pain Management, Plastic Surgery, Podiatry, Renal, Rheumatology, Trauma, Urology, Vascular</p> <p>N and % of Telehealth Eligible Specialties Scheduled for Telehealth: Eligible Specialties include Gastroenterology, Urology, Infectious Disease, Rheumatology and Pulmonary Diseases.</p> |
| 4   | Outcome Metrics                                      | Definition  |
| 4.1 | Percent completed                                    | Service outcomes "Seen" and "Refused & Verified" divided by "Total Scheduled Services" minus "No Longer Indicated"  |
| 5   | Unscheduled Services                                 | Definition  |
| 5.1 | Routine Sick Call Completed                          | Number of sick call encounters completed by CHS   |
| 5.2 | Emergency Sick Call Documentation                    | Number of emergency encounters documented by each clinical responder. An emergency may have more than one responder. This number does not indicate distinct emergencies.  |
| 5.3 | Injury Evaluations                                   | Number of injury evaluations documented. Injury evaluations are documented at the encounter level and may contain duplicates. This number does not indicate distinct injuries.  |
| 5.4 | Medical Add-Ons                                      | Unscheduled medical follow-up encounters completed.   |
| 5.5 | Number of Patients with Non-Intake Labs Collected    | For each date within the report range, create cohort of distinct patients who had $\geq 1$ lab collected. If patient had $> 1$ lab collected on a single date, count once. Sum the total distinct patients on each date in the report range. Exclusions: Labs collected as a component of the intake encounter and lab results of "Refused" or "Not Available/Discharged".  |

### III. Summary Data

#### Summary

|            |  |          |
|------------|--|----------|
| <b>1</b>   | <b>CHS Intakes (New Jail Admissions)</b>             | <b>N</b> |
| <b>1.1</b> | Completed CHS Intakes                                | 3112     |
| <b>1.2</b> | Average time to completion once known to CHS (hours) | 3.9      |

|            |  |          |
|------------|--|----------|
| <b>2</b>   | <b>Referrals made to mental health service</b> | <b>N</b> |
| <b>2.1</b> | Referrals made to mental health service        | 630      |
| <b>2.2</b> | Referrals seen within 72 hours                 | 551      |
| <b>2.3</b> | Percent seen within 72 hours                   | 87%      |

| 3   | Scheduled Services              | Medical     |             | Nursing      |             | Mental Health |             | Social Work |             | Dental/Oral Surgery |             | Specialty Clinic - On Island |             | Specialty Clinic - Off Island |             | Substance Use        |   | Total        |             |     |
|---|---------------------------------|-------------|-------------|--------------|-------------|---------------|-------------|-------------|-------------|---------------------|-------------|------------------------------|-------------|-------------------------------|-------------|----------------------|---|--------------|-------------|-----|
|   | Service Outcomes                | N           | %           | N            | %           | N             | %           | N           | %           | N                   | %           | N                            | %           | N                             | %           | N                    | % | N            | %           |     |
|   | Seen                            | 2816        | 68%         | 9181         | 87%         | 14435         | 62%         | 6795        | 90%         | 1990                | 60%         | 1968                         | 46%         | 338                           | 23%         | <b>Future Metric</b> |   |              | 37523       | 69% |
|   | Refused & Verified              | 100         | 2%          | 195          | 2%          | 988           | 4%          | 25          | 0%          | 271                 | 8%          | 1068                         | 25%         | 282                           | 55%         |                      |   |              | 2929        | 5%  |
|   | Not Produced by DOC             | 861         | 21%         | 879          | 8%          | 4137          | 18%         | 526         | 7%          | 726                 | 22%         | 846                          | 20%         | 140                           | 14%         |                      |   |              | 8115        | 15% |
|   | Out to Court                    | 142         | 3%          | 143          | 1%          | 1148          | 5%          | 166         | 2%          | 209                 | 6%          | 219                          | 5%          | 19                            | 0%          |                      |   |              | 2046        | 4%  |
|   | Left Without Being Seen         | 11          | 0%          | 8            | 0%          | 147           | 1%          | 22          | 0%          | 31                  | 1%          | 30                           | 1%          | 0                             | 0%          |                      |   |              | 249         | 0%  |
|   | Rescheduled by CHS              | 143         | 3%          | 110          | 1%          | 2111          | 9%          | 26          | 0%          | 65                  | 2%          | 178                          | 4%          | 19                            | 5%          |                      |   |              | 2652        | 5%  |
|   | Rescheduled by Hospital         | N/A         | N/A         | N/A          | N/A         | N/A           | N/A         | N/A         | N/A         | N/A                 | N/A         | N/A                          | N/A         | 35                            | 5%          |                      |   |              | 35          | 0%  |
|   | No Longer Indicated             | 54          | 1%          | 37           | 0%          | 367           | 2%          | 4           | 0%          | 3                   | 0%          | 5                            | 0%          | N/A                           | N/A         |                      |   |              | 470         | 1%  |
|   | <b>Total Scheduled Services</b> | <b>4127</b> | <b>100%</b> | <b>10553</b> | <b>100%</b> | <b>23333</b>  | <b>100%</b> | <b>7564</b> | <b>100%</b> | <b>3295</b>         | <b>100%</b> | <b>4314</b>                  | <b>100%</b> | <b>833</b>                    | <b>100%</b> |                      |   | <b>54019</b> | <b>100%</b> |     |
| <b>N &amp; % Scheduled for Telehealth: 92 (15%)</b> |                                 |             |             |              |             |               |             |             |             |                     |             |                              |             |                               |             |                      |   |              |             |     |

| 4          | Outcome Metrics   | Medical | Nursing | Mental Health | Social Work | Dental/Oral Surgery | Specialty Clinic - On | Specialty Clinic - Off | Substance Use | Total |
|------------|-------------------|---------|---------|---------------|-------------|---------------------|-----------------------|------------------------|---------------|-------|
| <b>4.1</b> | Percent completed | 72%     | 89%     | 67%           | 90%         | 69%                 | 70%                   | 74%                    |               | 76%   |

|            |   |          |
|------------|---|----------|
| <b>5</b>   | <b>Unscheduled Services</b>                       | <b>N</b> |
| <b>5.1</b> | Routine Sick Call Completed                       | 8749     |
| <b>5.2</b> | Emergency Sick Call Completed <sup>1</sup>        | 627      |
| <b>5.3</b> | Injury Evaluations <sup>2</sup>                   | 2413     |
| <b>5.4</b> | Medical Add-Ons                                   | 1443     |
| <b>5.5</b> | Number of Patients with Non-Intake Lab Collection | 2493     |

<sup>1</sup>Emergency sick calls are documented by each clinical responder. This number does not indicate distinct emergencies.

<sup>2</sup>Injury evaluations are documented at the encounter level and may contain duplicates. This number does not indicate distinct injuries.

#### IV. AMKC

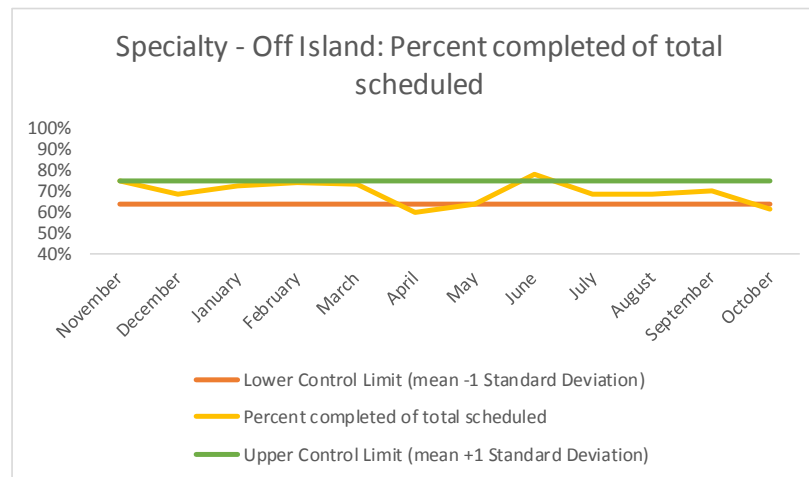
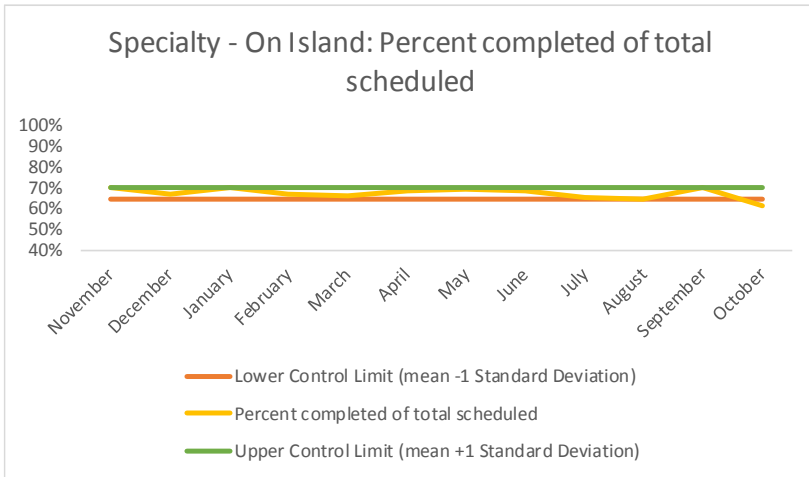
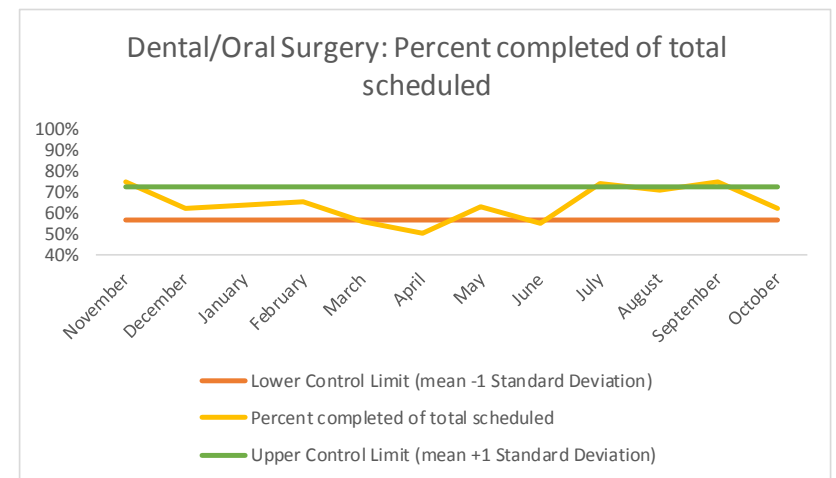
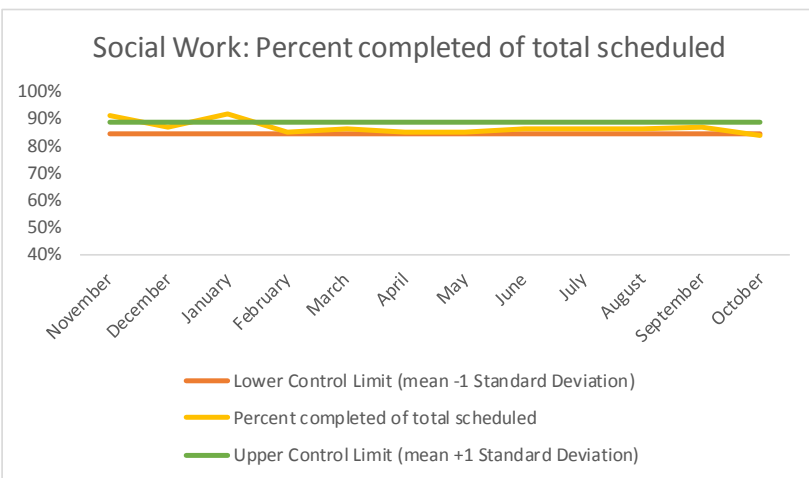
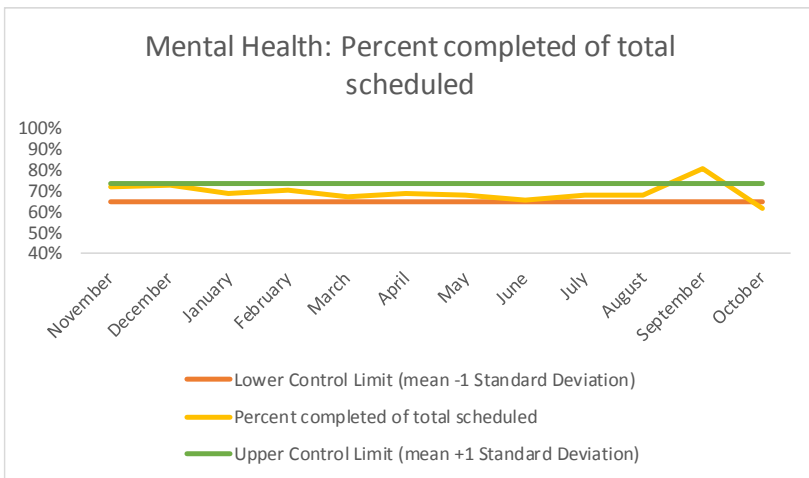
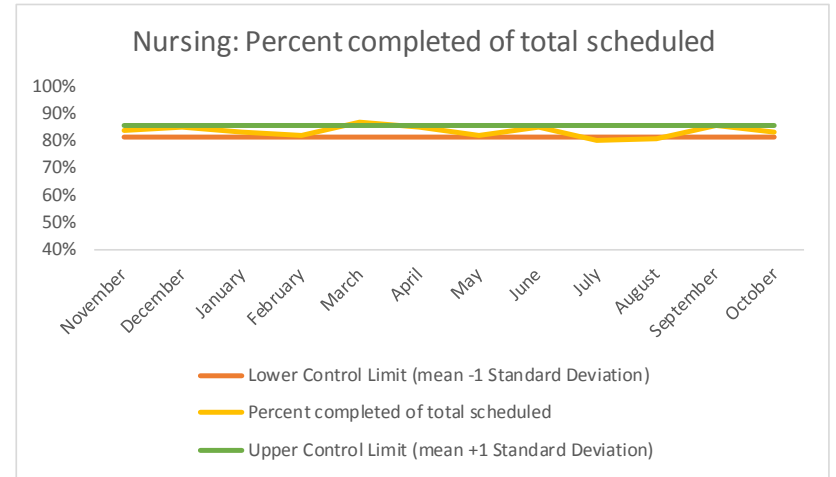
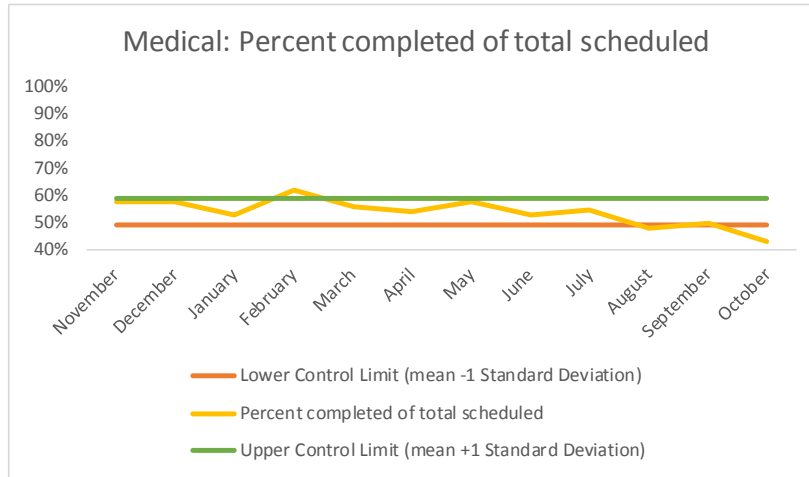
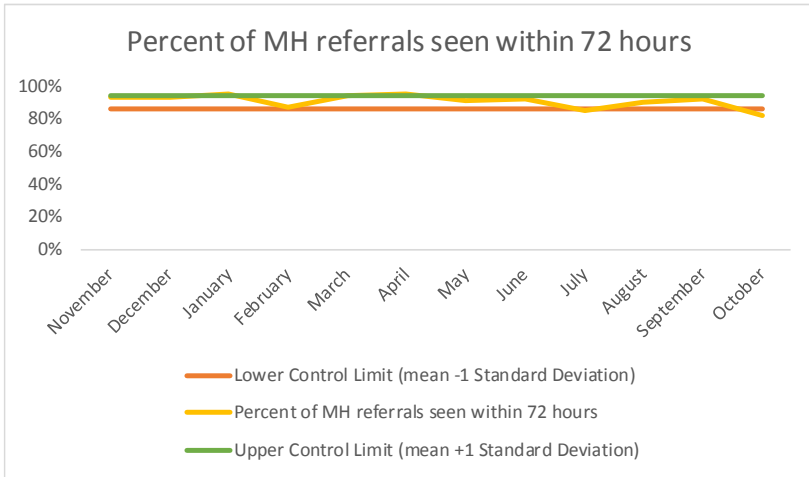
|          |  |          |
|----------|--|----------|
| <b>1</b> | <b>CHS Intakes (New Jail Admissions)</b>             | <b>N</b> |
| 1.1      | Completed CHS Intakes                                | 614      |
| 1.2      | Average time to completion once known to CHS (hours) | 6.7      |

|          |  |          |
|----------|--|----------|
| <b>2</b> | <b>Referrals made to mental health service</b> | <b>N</b> |
| 2.1      | Referrals made to mental health service        | 119      |
| 2.2      | Referrals seen within 72 hours                 | 97       |
| 2.3      | Percent seen within 72 hours                   | 82%      |

| 3  | Scheduled Services | Medical <sup>1</sup> |             | Nursing <sup>2</sup> |             | Mental Health |             | Social Work |            | Dental/Oral Surgery |            | Specialty Clinic - On Island |            | Specialty Clinic - Off Island |      | Substance Use |              | Total       |   |
|--|--------------------|----------------------|-------------|----------------------|-------------|---------------|-------------|-------------|------------|---------------------|------------|------------------------------|------------|-------------------------------|------|---------------|--------------|-------------|---|
|  | Service Outcomes   | N                    | %           | N                    | %           | N             | %           | N           | %          | N                   | %          | N                            | %          | N                             | %    | N             | %            | N           | % |
|  | Seen               | 573                  | 42%         | 2548                 | 81%         | 4767          | 58%         | 1680        | 84%        | 304                 | 51%        | 214                          | 31%        | 59                            | 29%  | Future Metric | 10145        | 63%         |   |
| Refused & Verified                               | 6                  | 0%                   | 81          | 3%                   | 183         | 2%            | 0           | 0%          | 66         | 11%                 | 208        | 30%                          | 66         | 32%                           | 610  |               | 4%           |             |   |
| Not Produced by DOC                              | 658                | 49%                  | 436         | 14%                  | 1486        | 18%           | 231         | 12%         | 160        | 27%                 | 211        | 30%                          | 54         | 26%                           | 3236 |               | 20%          |             |   |
| Out to Court                                     | 74                 | 5%                   | 53          | 2%                   | 295         | 4%            | 61          | 3%          | 45         | 7%                  | 30         | 4%                           | 10         | 5%                            | 568  |               | 4%           |             |   |
| Left Without Being Seen                          | 0                  | 0%                   | 2           | 0%                   | 34          | 0%            | 14          | 1%          | 5          | 1%                  | 3          | 0%                           | 0          | 0%                            | 58   |               | 0%           |             |   |
| Rescheduled by CHS                               | 39                 | 3%                   | 38          | 1%                   | 1186        | 15%           | 5           | 0%          | 21         | 3%                  | 27         | 4%                           | 6          | 3%                            | 1322 |               | 8%           |             |   |
| Rescheduled by Hospital                          | N/A                | N/A                  | N/A         | N/A                  | N/A         | N/A           | N/A         | N/A         | N/A        | N/A                 | N/A        | N/A                          | 11         | 5%                            | 11   |               | N/A          |             |   |
| No Longer Indicated                              | 2                  | 0%                   | 3           | 0%                   | 201         | 2%            | 0           | 0%          | 0          | 0%                  | 0          | 0%                           | N/A        | N/A                           | 206  |               | 1%           |             |   |
| <b>Total Scheduled Services</b>                  | <b>1352</b>        | <b>100%</b>          | <b>3161</b> | <b>100%</b>          | <b>8152</b> | <b>100%</b>   | <b>1991</b> | <b>100%</b> | <b>601</b> | <b>100%</b>         | <b>693</b> | <b>100%</b>                  | <b>206</b> | <b>100%</b>                   |      |               | <b>16156</b> | <b>100%</b> |   |
| <sup>1</sup> Includes medical infirmary services |                    |                      |             |                      |             |               |             |             |            |                     |            |                              |            |                               |      |               |              |             |   |
| <sup>2</sup> Includes nursing infirmary services |                    |                      |             |                      |             |               |             |             |            |                     |            |                              |            |                               |      |               |              |             |   |

|          |                        |                |                |                      |                    |                            |                              |                               |                      |              |
|----------|------------------------|----------------|----------------|----------------------|--------------------|----------------------------|------------------------------|-------------------------------|----------------------|--------------|
| <b>4</b> | <b>Outcome Metrics</b> | <b>Medical</b> | <b>Nursing</b> | <b>Mental Health</b> | <b>Social Work</b> | <b>Dental/Oral Surgery</b> | <b>Specialty Clinic - On</b> | <b>Specialty Clinic - Off</b> | <b>Substance Use</b> | <b>Total</b> |
| 4.1      | Percent completed      | 43%            | 83%            | 62%                  | 84%                | 62%                        | 61%                          | 61%                           |                      | 67%          |

|  |   |          |
|--|---|----------|
| <b>5</b>   | <b>Unscheduled Services</b>                       | <b>N</b> |
| 5.1  | Routine Sick Call Completed                       | 2462     |
| 5.2  | Emergency Sick Call Completed <sup>1</sup>        | 149      |
| 5.3  | Injury Evaluations <sup>2</sup>                   | 555      |
| 5.4  | Medical Add-Ons                                   | 249      |
| 5.5  | Number of Patients with Non-Intake Lab Collection | 492      |
| <sup>1</sup> Emergency sick calls are documented by each clinical responder. This number does not indicate distinct emergencies.                   |   |          |
| <sup>2</sup> Injury evaluations are documented at the encounter level and may contain duplicates. This number does not indicate distinct injuries. |   |          |



## V. BKDC

|            |  |          |
|------------|--|----------|
| <b>1</b>   | <b>CHS Intakes (New Jail Admissions)</b>             | <b>N</b> |
| <b>1.1</b> | Completed CHS Intakes                                | 672      |
| <b>1.2</b> | Average time to completion once known to CHS (hours) | 3.3      |

|            |  |          |
|------------|--|----------|
| <b>2</b>   | <b>Referrals made to mental health service</b> | <b>N</b> |
| <b>2.1</b> | Referrals made to mental health service        | 38       |
| <b>2.2</b> | Referrals seen within 72 hours                 | 36       |
| <b>2.3</b> | Percent seen within 72 hours                   | 95%      |

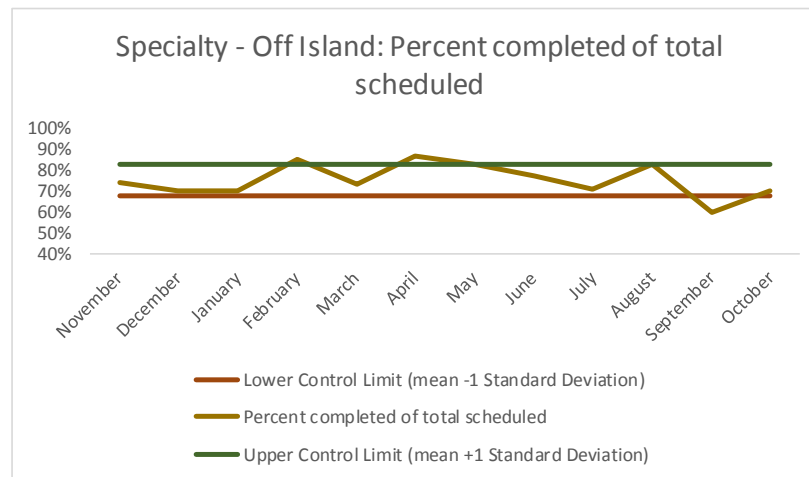
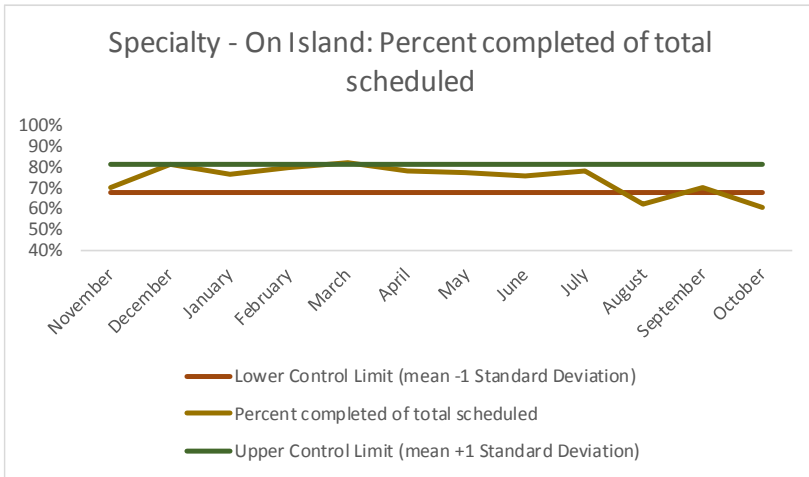
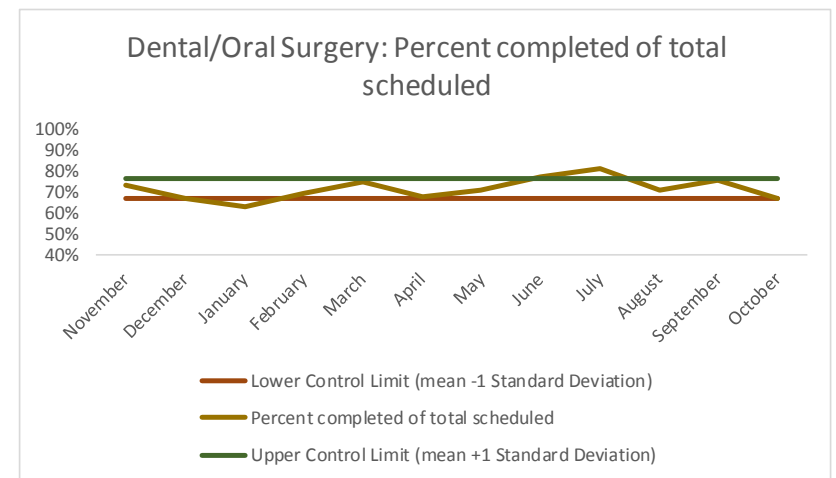
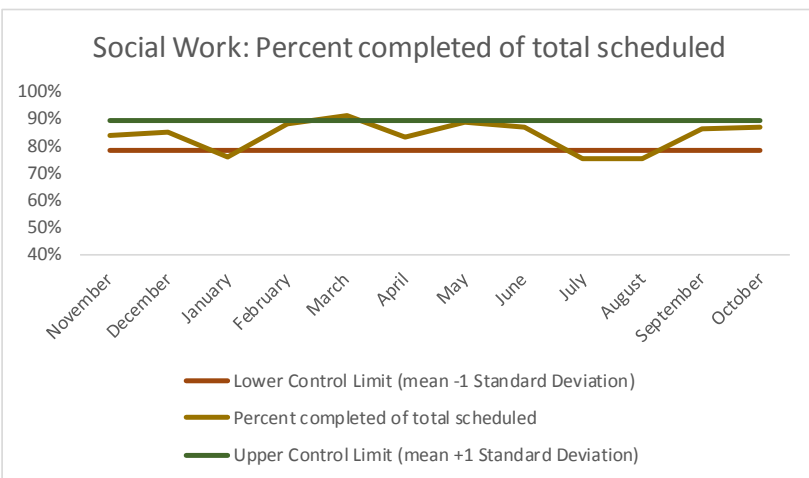
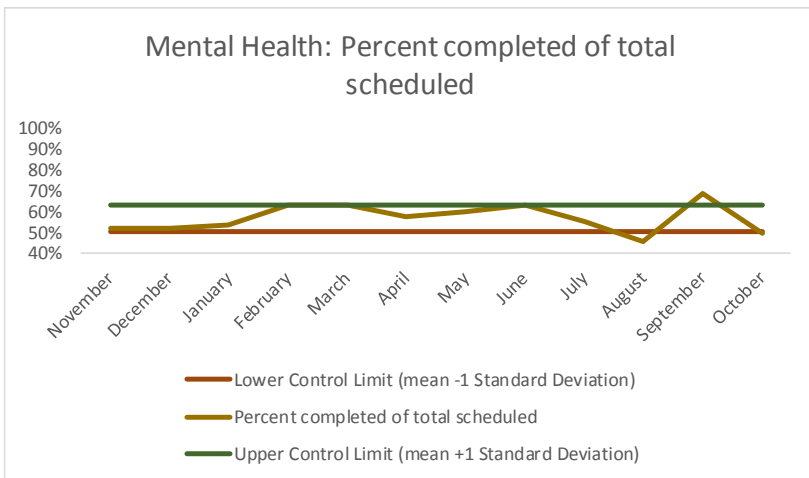
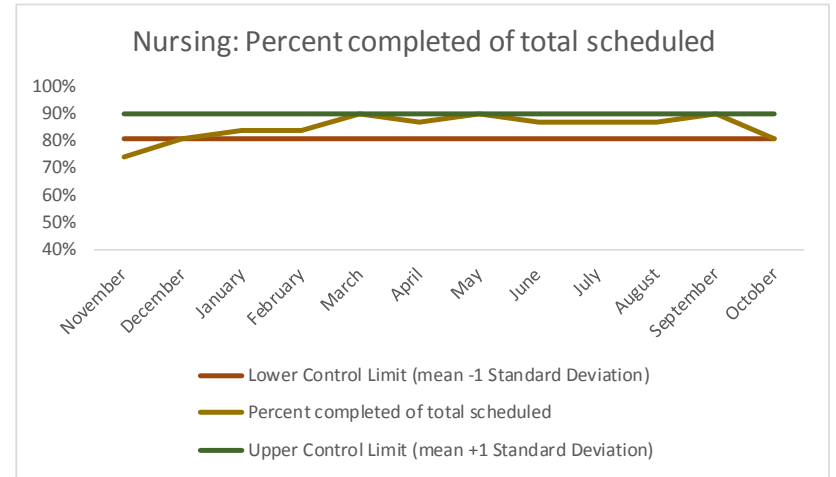
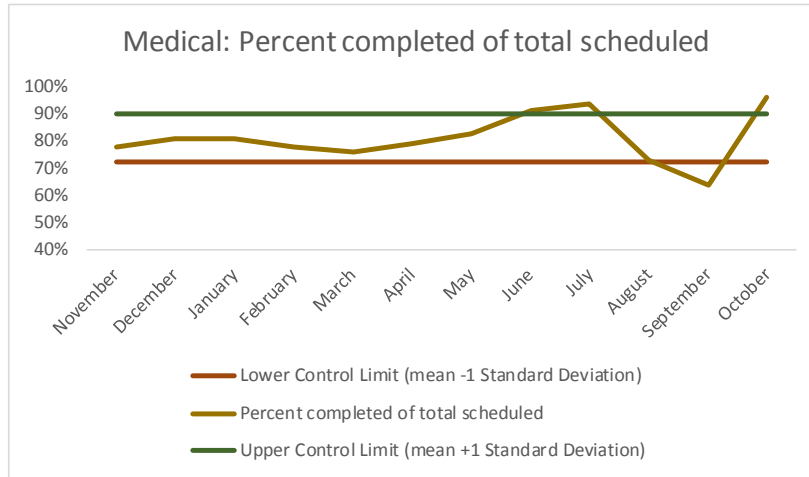
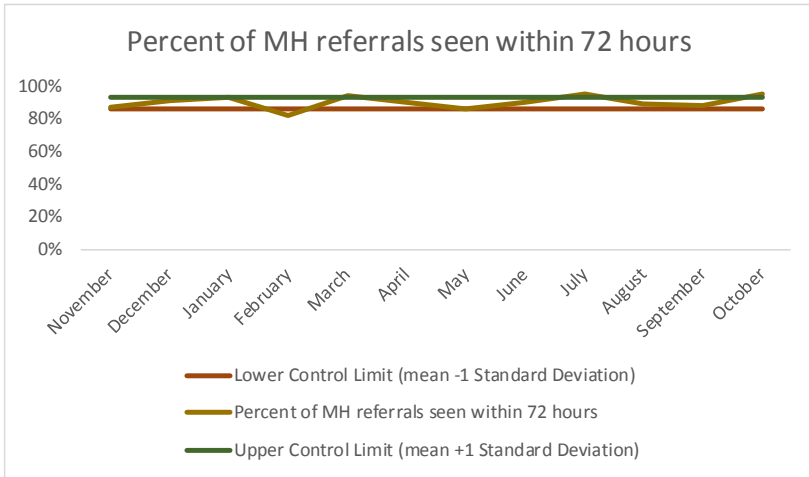
| 3 | Scheduled Services                               | Medical <sup>1</sup> |             | Nursing <sup>2</sup> |             | Mental Health |             | Social Work |             | Dental/Oral Surgery |             | Specialty Clinic - On Island |             | Specialty Clinic - Off Island |             | Substance Use |   | Total |             |             |
|---|--|----------------------|-------------|----------------------|-------------|---------------|-------------|-------------|-------------|---------------------|-------------|------------------------------|-------------|-------------------------------|-------------|---------------|---|-------|-------------|-------------|
|   | Service Outcomes                                 | N                    | %           | N                    | %           | N             | %           | N           | %           | N                   | %           | N                            | %           | N                             | %           | N             | % | N     | %           |             |
|   | Seen   | 156                  | 91%         | 272                  | 79%         | 651           | 44%         | 353         | 87%         | 180                 | 61%         | 52                           | 25%         | 18                            | 30%         | Future Metric |   |       | 1682        | 57%         |
|   | Refused & Verified                               | 4                    | 2%          | 5                    | 1%          | 87            | 6%          | 0           | 0%          | 18                  | 6%          | 75                           | 36%         | 24                            | 40%         |               |   |       | 213         | 7%          |
|   | Not Produced by DOC                              | 2                    | 1%          | 38                   | 11%         | 343           | 23%         | 48          | 12%         | 82                  | 28%         | 60                           | 29%         | 13                            | 22%         |               |   |       | 586         | 20%         |
|   | Out to Court                                     | 1                    | 1%          | 17                   | 5%          | 151           | 10%         | 7           | 2%          | 14                  | 5%          | 11                           | 5%          | 2                             | 3%          |               |   |       | 203         | 7%          |
|   | Left Without Being Seen                          | 3                    | 2%          | 0                    | 0%          | 17            | 1%          | 0           | 0%          | 1                   | 0%          | 1                            | 0%          | 0                             | 0%          |               |   |       | 22          | 1%          |
|   | Rescheduled by CHS                               | 1                    | 1%          | 11                   | 3%          | 218           | 15%         | 0           | 0%          | 0                   | 0%          | 11                           | 5%          | 2                             | 3%          |               |   |       | 243         | 8%          |
|   | Rescheduled by Hospital                          | N/A                  | N/A         | N/A                  | N/A         | N/A           | N/A         | N/A         | N/A         | N/A                 | N/A         | N/A                          | N/A         | 1                             | 2%          |               |   |       | 1           | N/A         |
|   | No Longer Indicated                              | 4                    | 2%          | 2                    | 1%          | 2             | 0%          | 0           | 0%          | 0                   | 0%          | 0                            | 0%          | N/A                           | N/A         |               |   |       | 8           | 0%          |
|   | <b>Total Scheduled Services</b>                  | <b>171</b>           | <b>100%</b> | <b>345</b>           | <b>100%</b> | <b>1469</b>   | <b>100%</b> | <b>408</b>  | <b>100%</b> | <b>295</b>          | <b>100%</b> | <b>210</b>                   | <b>100%</b> | <b>60</b>                     | <b>100%</b> |               |   |       | <b>2958</b> | <b>100%</b> |
|   | <sup>1</sup> Includes medical infirmary services |                      |             |                      |             |               |             |             |             |                     |             |                              |             |                               |             |               |   |       |             |             |
|   | <sup>2</sup> Includes nursing infirmary services |                      |             |                      |             |               |             |             |             |                     |             |                              |             |                               |             |               |   |       |             |             |

|            |                        |                |                |                      |                    |                            |                              |                               |                      |              |
|------------|------------------------|----------------|----------------|----------------------|--------------------|----------------------------|------------------------------|-------------------------------|----------------------|--------------|
| <b>4</b>   | <b>Outcome Metrics</b> | <b>Medical</b> | <b>Nursing</b> | <b>Mental Health</b> | <b>Social Work</b> | <b>Dental/Oral Surgery</b> | <b>Specialty Clinic - On</b> | <b>Specialty Clinic - Off</b> | <b>Substance Use</b> | <b>Total</b> |
| <b>4.1</b> | Percent completed      | 96%            | 81%            | 50%                  | 87%                | 67%                        | 60%                          | 70%                           |                      | <b>64%</b>   |

|            |   |          |
|------------|---|----------|
| <b>5</b>   | <b>Unscheduled Services</b>                       | <b>N</b> |
| <b>5.1</b> | Routine Sick Call Completed                       | 454      |
| <b>5.2</b> | Emergency Sick Call Completed <sup>1</sup>        | 24       |
| <b>5.3</b> | Injury Evaluations <sup>2</sup>                   | 282      |
| <b>5.4</b> | Medical Add-Ons                                   | 57       |
| <b>5.5</b> | Number of Patients with Non-Intake Lab Collection | 108      |

<sup>1</sup>Emergency sick calls are documented by each clinical responder. This number does not indicate distinct emergencies.

<sup>2</sup>Injury evaluations are documented at the encounter level and may contain duplicates. This number does not indicate distinct injuries.





## VI. EMTC

|          |  |          |
|----------|--|----------|
| <b>1</b> | <b>CHS Intakes (New Jail Admissions)</b>             | <b>N</b> |
| 1.1      | Completed CHS Intakes                                | 194      |
| 1.2      | Average time to completion once known to CHS (hours) | 3.2      |

|          |  |          |
|----------|--|----------|
| <b>2</b> | <b>Referrals made to mental health service</b> | <b>N</b> |
| 2.1      | Referrals made to mental health service        | 76       |
| 2.2      | Referrals seen within 72 hours                 | 64       |
| 2.3      | Percent seen within 72 hours                   | 84%      |

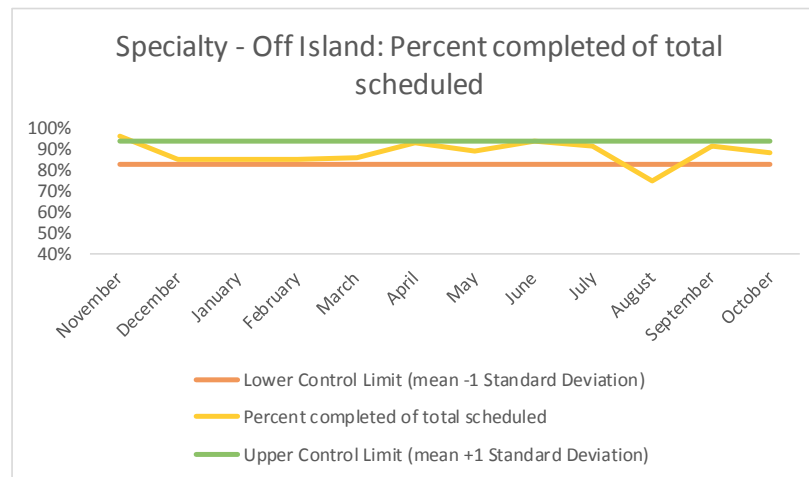
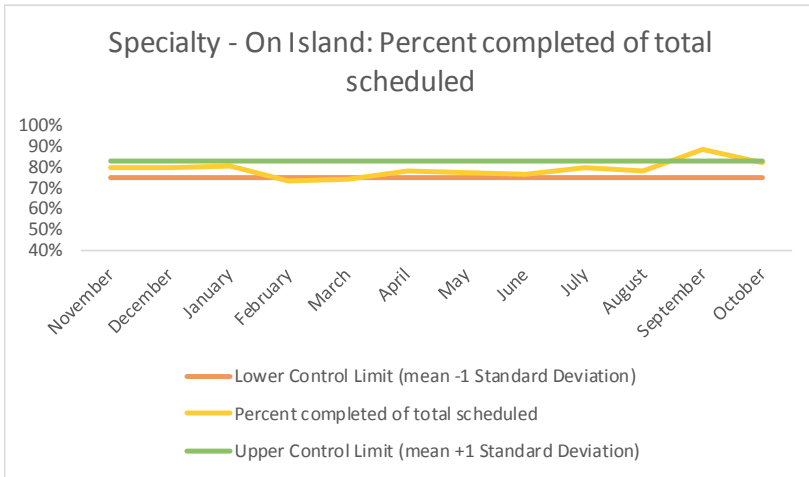
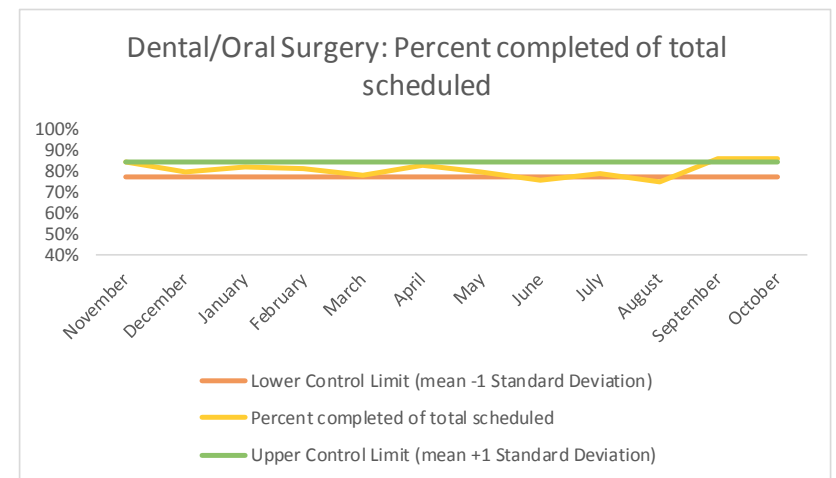
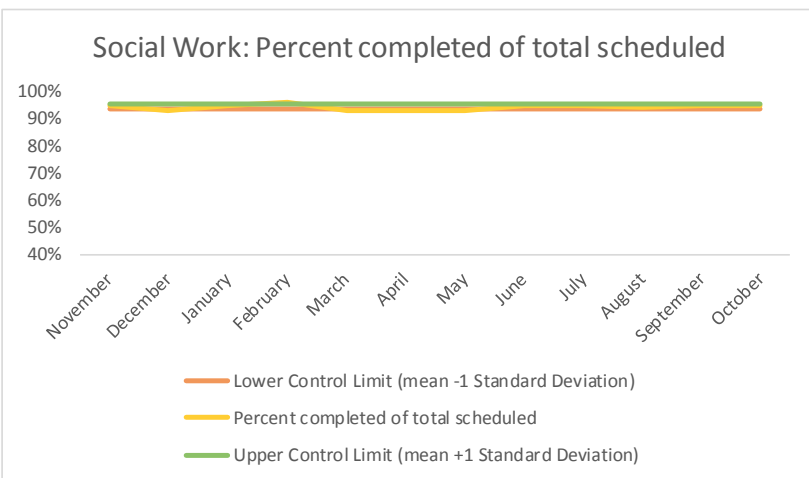
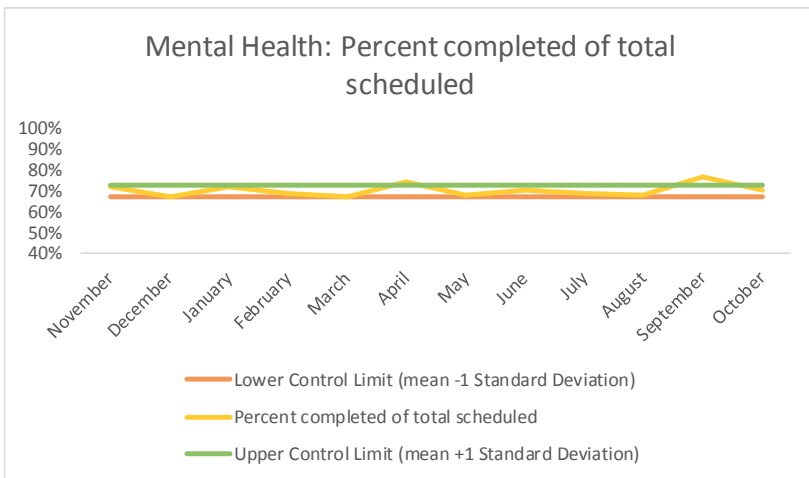
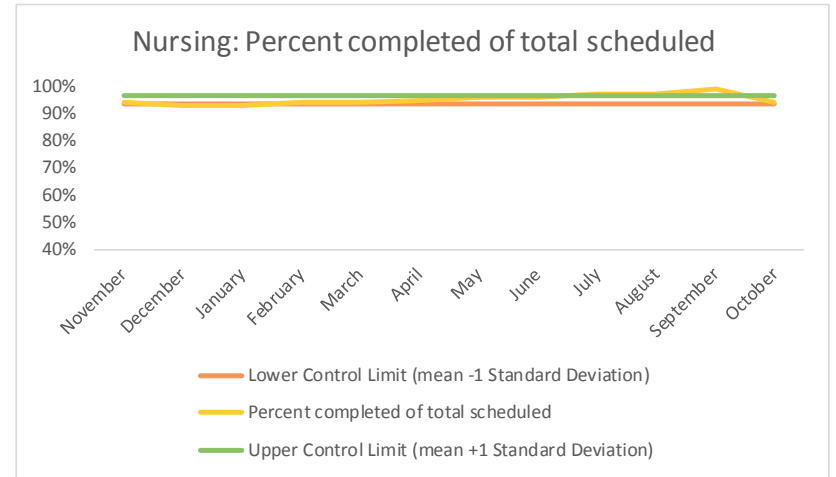
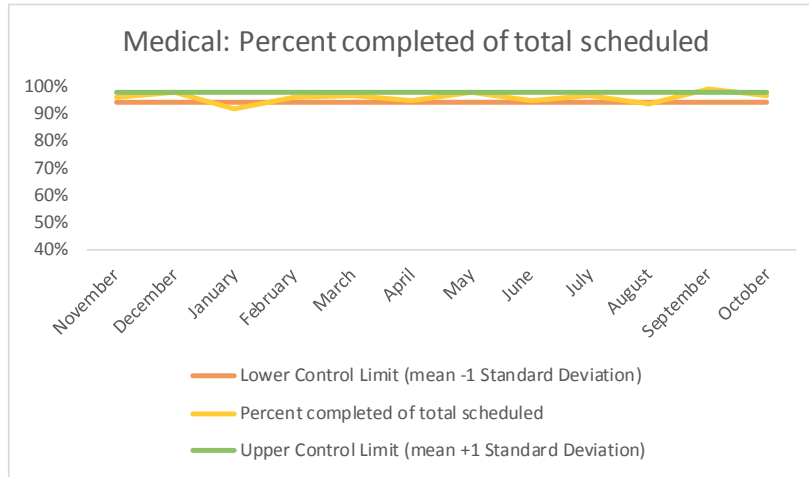
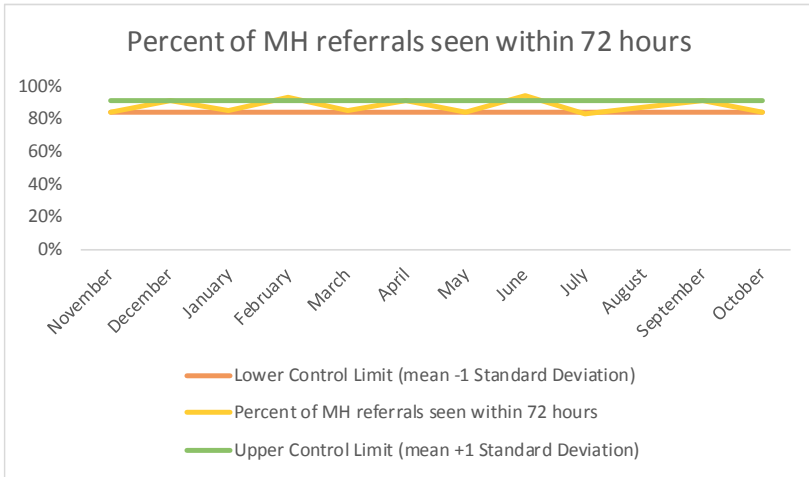
| 3  | Scheduled Services | Medical <sup>1</sup> |            | Nursing <sup>2</sup> |             | Mental Health |             | Social Work |            | Dental/Oral Surgery |            | Specialty Clinic - On Island |           | Specialty Clinic - Off Island |     | Substance Use |             | Total       |      |
|--|--------------------|----------------------|------------|----------------------|-------------|---------------|-------------|-------------|------------|---------------------|------------|------------------------------|-----------|-------------------------------|-----|---------------|-------------|-------------|------|
|  | Service Outcomes   | N                    | %          | N                    | %           | N             | %           | N           | %          | N                   | %          | N                            | %         | N                             | %   | N             | %           | N           | %    |
|  | Seen               | 324                  | 95%        | 676                  | 94%         | 1037          | 58%         | 1534        | 95%        | 333                 | 71%        | 255                          | 54%       | 34                            | 52% | Future Metric |             |             | 4193 |
| Refused & Verified                               | 0                  | 0%                   | 5          | 1%                   | 191         | 11%           | 2           | 0%          | 70         | 15%                 | 131        | 28%                          | 23        | 35%                           |     |               |             | 422         | 8%   |
| Not Produced by DOC                              | 5                  | 1%                   | 9          | 1%                   | 450         | 25%           | 72          | 4%          | 49         | 10%                 | 63         | 13%                          | 2         | 3%                            |     |               |             | 650         | 12%  |
| Out to Court                                     | 2                  | 1%                   | 0          | 0%                   | 23          | 1%            | 3           | 0%          | 12         | 3%                  | 4          | 1%                           | 0         | 0%                            |     |               |             | 44          | 1%   |
| Left Without Being Seen                          | 1                  | 0%                   | 1          | 0%                   | 13          | 1%            | 0           | 0%          | 4          | 1%                  | 5          | 1%                           | 0         | 0%                            |     |               |             | 24          | 0%   |
| Rescheduled by CHS                               | 2                  | 1%                   | 30         | 4%                   | 49          | 3%            | 6           | 0%          | 1          | 0%                  | 15         | 3%                           | 1         | 2%                            |     |               |             | 104         | 2%   |
| Rescheduled by Hospital                          | N/A                | N/A                  | N/A        | N/A                  | N/A         | N/A           | N/A         | N/A         | N/A        | N/A                 | N/A        | N/A                          | 5         | 8%                            |     |               |             | 5           | N/A  |
| No Longer Indicated                              | 8                  | 2%                   | 1          | 0%                   | 34          | 2%            | 0           | 0%          | 1          | 0%                  | 0          | 0%                           | N/A       | N/A                           |     |               |             | 44          | 1%   |
| <b>Total Scheduled Services</b>                  | <b>342</b>         | <b>100%</b>          | <b>722</b> | <b>100%</b>          | <b>1797</b> | <b>100%</b>   | <b>1617</b> | <b>100%</b> | <b>470</b> | <b>100%</b>         | <b>473</b> | <b>100%</b>                  | <b>65</b> | <b>100%</b>                   |     |               | <b>5486</b> | <b>100%</b> |      |
| <sup>1</sup> Includes medical infirmary services |                    |                      |            |                      |             |               |             |             |            |                     |            |                              |           |                               |     |               |             |             |      |
| <sup>2</sup> Includes nursing infirmary services |                    |                      |            |                      |             |               |             |             |            |                     |            |                              |           |                               |     |               |             |             |      |

|          |                        |                |                |                      |                    |                            |                              |                               |                      |              |
|----------|------------------------|----------------|----------------|----------------------|--------------------|----------------------------|------------------------------|-------------------------------|----------------------|--------------|
| <b>4</b> | <b>Outcome Metrics</b> | <b>Medical</b> | <b>Nursing</b> | <b>Mental Health</b> | <b>Social Work</b> | <b>Dental/Oral Surgery</b> | <b>Specialty Clinic - On</b> | <b>Specialty Clinic - Off</b> | <b>Substance Use</b> | <b>Total</b> |
| 4.1      | Percent completed      | 97%            | 94%            | 70%                  | 95%                | 86%                        | 82%                          | 88%                           |                      | 85%          |

|          |   |          |
|----------|---|----------|
| <b>5</b> | <b>Unscheduled Services</b>                       | <b>N</b> |
| 5.1      | Routine Sick Call Completed                       | 1116     |
| 5.2      | Emergency Sick Call Completed <sup>1</sup>        | 108      |
| 5.3      | Injury Evaluations <sup>2</sup>                   | 162      |
| 5.4      | Medical Add-Ons                                   | 241      |
| 5.5      | Number of Patients with Non-Intake Lab Collection | 400      |

<sup>1</sup>Emergency sick calls are documented by each clinical responder. This number does not indicate distinct emergencies.

<sup>2</sup>Injury evaluations are documented at the encounter level and may contain duplicates. This number does not indicate distinct injuries.



## VII. GRVC

|            |  |          |
|------------|--|----------|
| <b>1</b>   | <b>CHS Intakes (New Jail Admissions)</b>             | <b>N</b> |
| <b>1.1</b> | Completed CHS Intakes                                | 0        |
| <b>1.2</b> | Average time to completion once known to CHS (hours) | 0        |

|            |  |          |
|------------|--|----------|
| <b>2</b>   | <b>Referrals made to mental health service</b> | <b>N</b> |
| <b>2.1</b> | Referrals made to mental health service        | 22       |
| <b>2.2</b> | Referrals seen within 72 hours                 | 19       |
| <b>2.3</b> | Percent seen within 72 hours                   | 86%      |

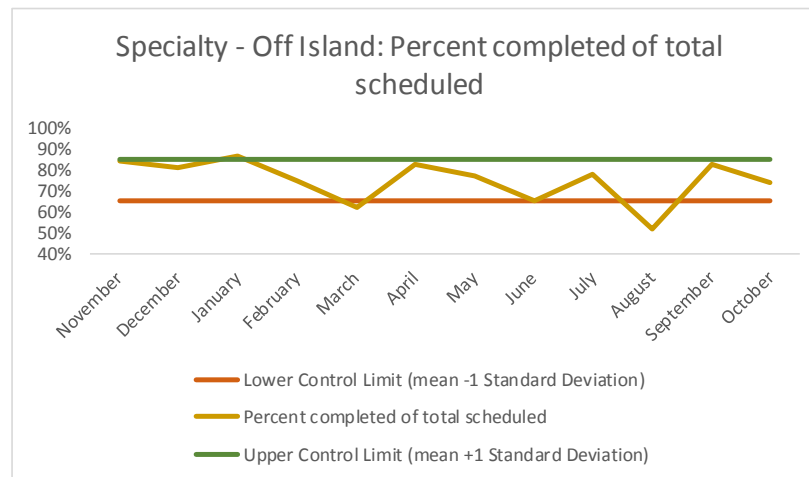
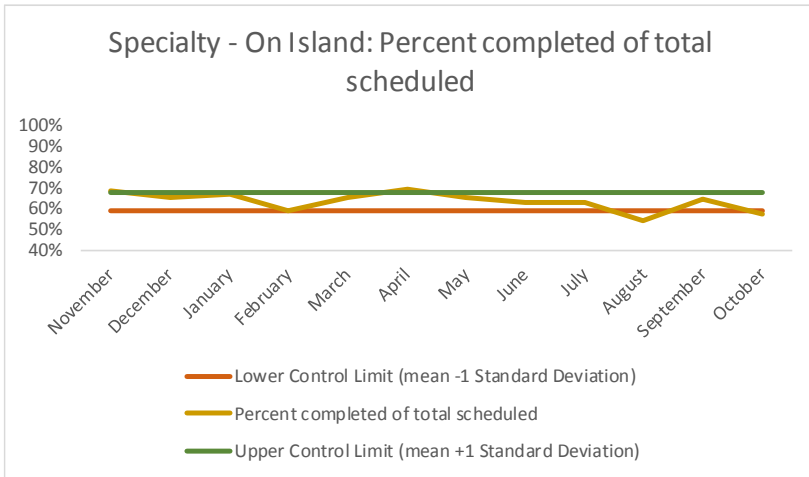
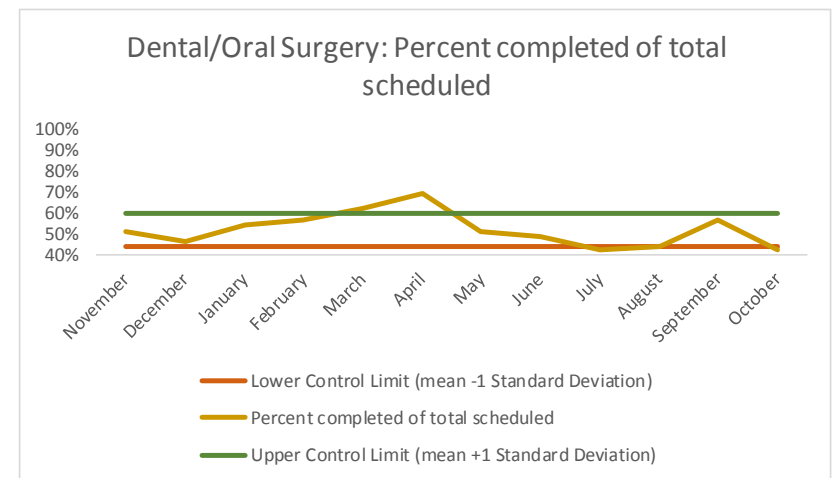
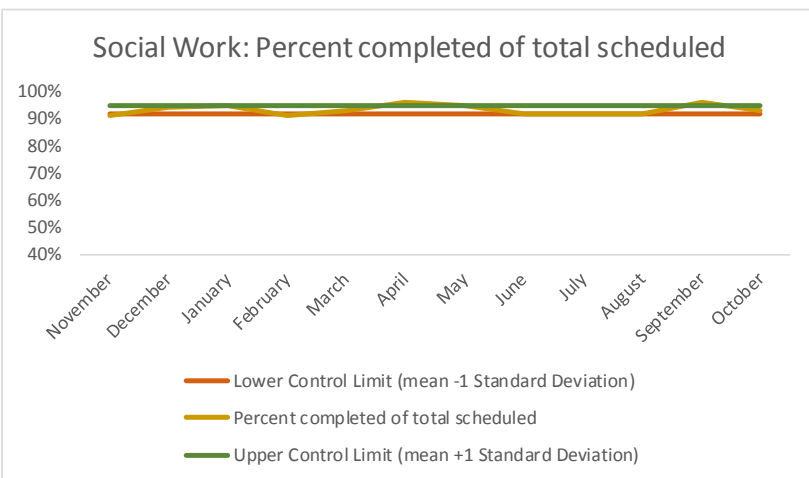
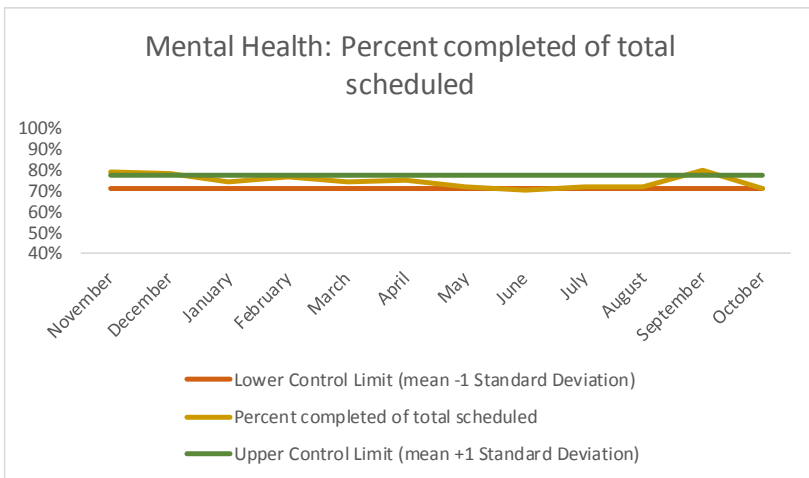
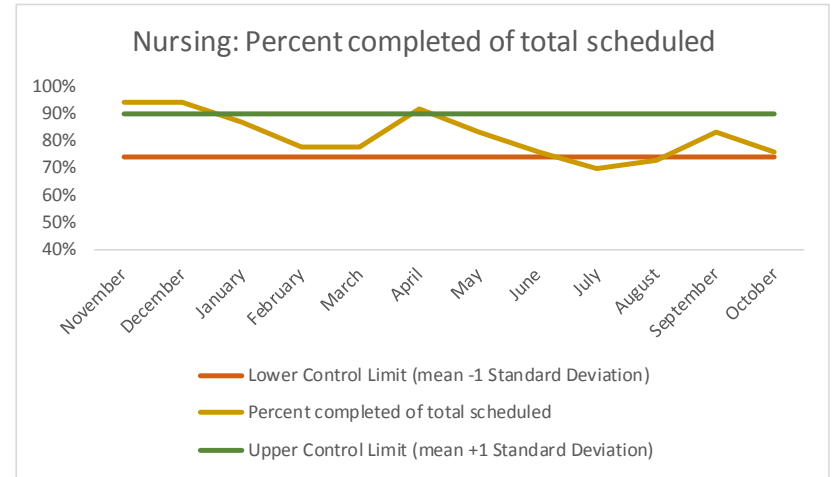
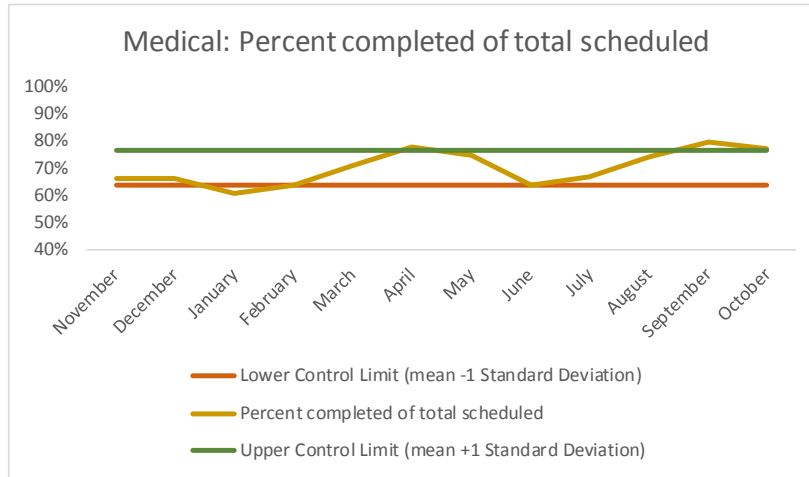
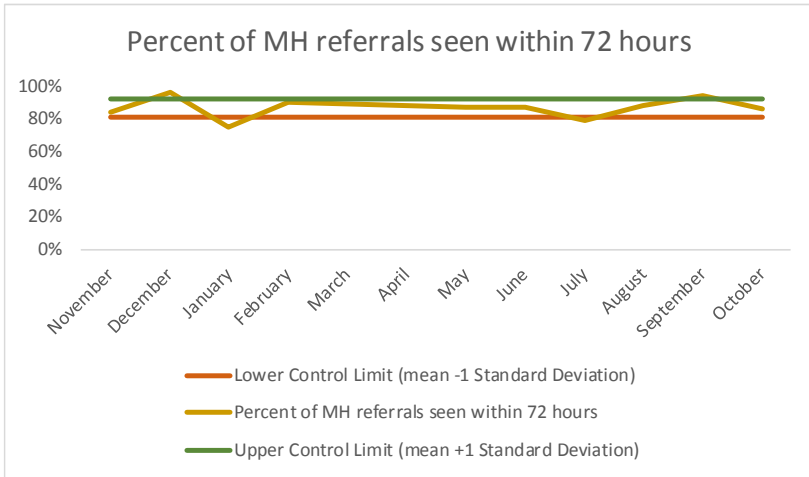
| 3  | Scheduled Services | Medical <sup>1</sup> |            | Nursing <sup>2</sup> |             | Mental Health |            | Social Work |            | Dental/Oral Surgery |            | Specialty Clinic - On Island |           | Specialty Clinic - Off Island |     | Substance Use |   | Total       |             |     |
|--|--------------------|----------------------|------------|----------------------|-------------|---------------|------------|-------------|------------|---------------------|------------|------------------------------|-----------|-------------------------------|-----|---------------|---|-------------|-------------|-----|
|  | Service Outcomes   | N                    | %          | N                    | %           | N             | %          | N           | %          | N                   | %          | N                            | %         | N                             | %   | N             | % | N           | %           |     |
|  | Seen               | 159                  | 68%        | 335                  | 75%         | 1804          | 69%        | 484         | 92%        | 121                 | 34%        | 102                          | 31%       | 40                            | 41% | Future Metric |   |             | 3045        | 66% |
| Refused & Verified                               | 22                 | 9%                   | 4          | 1%                   | 52          | 2%            | 4          | 1%          | 30         | 8%                  | 83         | 26%                          | 33        | 34%                           |     |               |   | 228         | 5%          |     |
| Not Produced by DOC                              | 35                 | 15%                  | 98         | 22%                  | 476         | 18%           | 11         | 2%          | 168        | 47%                 | 110        | 34%                          | 20        | 20%                           |     |               |   | 918         | 20%         |     |
| Out to Court                                     | 9                  | 4%                   | 3          | 1%                   | 121         | 5%            | 14         | 3%          | 31         | 9%                  | 12         | 4%                           | 1         | 1%                            |     |               |   | 191         | 4%          |     |
| Left Without Being Seen                          | 0                  | 0%                   | 0          | 0%                   | 15          | 1%            | 6          | 1%          | 1          | 0%                  | 0          | 0%                           | 0         | 0%                            |     |               |   | 22          | 0%          |     |
| Rescheduled by CHS                               | 10                 | 4%                   | 4          | 1%                   | 151         | 6%            | 7          | 1%          | 9          | 2%                  | 18         | 6%                           | 0         | 0%                            |     |               |   | 199         | 4%          |     |
| Rescheduled by Hospital                          | N/A                | N/A                  | N/A        | N/A                  | N/A         | N/A           | N/A        | N/A         | N/A        | N/A                 | N/A        | N/A                          | N/A       | 4                             | 4%  |               |   |             | 4           | N/A |
| No Longer Indicated                              | 0                  | 0%                   | 3          | 1%                   | 10          | 0%            | 1          | 0%          | 1          | 0%                  | 0          | 0%                           | N/A       | N/A                           |     |               |   | 15          | 0%          |     |
| <b>Total Scheduled Services</b>                  | <b>235</b>         | <b>100%</b>          | <b>447</b> | <b>100%</b>          | <b>2629</b> | <b>100%</b>   | <b>527</b> | <b>100%</b> | <b>361</b> | <b>100%</b>         | <b>325</b> | <b>100%</b>                  | <b>98</b> | <b>100%</b>                   |     |               |   | <b>4622</b> | <b>100%</b> |     |
| <sup>1</sup> Includes medical infirmary services |                    |                      |            |                      |             |               |            |             |            |                     |            |                              |           |                               |     |               |   |             |             |     |
| <sup>2</sup> Includes nursing infirmary services |                    |                      |            |                      |             |               |            |             |            |                     |            |                              |           |                               |     |               |   |             |             |     |

|            |                        |                |                |                      |                    |                            |                              |                               |                      |              |
|------------|------------------------|----------------|----------------|----------------------|--------------------|----------------------------|------------------------------|-------------------------------|----------------------|--------------|
| <b>4</b>   | <b>Outcome Metrics</b> | <b>Medical</b> | <b>Nursing</b> | <b>Mental Health</b> | <b>Social Work</b> | <b>Dental/Oral Surgery</b> | <b>Specialty Clinic - On</b> | <b>Specialty Clinic - Off</b> | <b>Substance Use</b> | <b>Total</b> |
| <b>4.1</b> | Percent completed      | 77%            | 76%            | 71%                  | 93%                | 42%                        | 57%                          | 74%                           |                      | 71%          |

|            |   |          |
|------------|---|----------|
| <b>5</b>   | <b>Unscheduled Services</b>                       | <b>N</b> |
| <b>5.1</b> | Routine Sick Call Completed                       | 1082     |
| <b>5.2</b> | Emergency Sick Call Completed <sup>1</sup>        | 96       |
| <b>5.3</b> | Injury Evaluations <sup>2</sup>                   | 301      |
| <b>5.4</b> | Medical Add-Ons                                   | 54       |
| <b>5.5</b> | Number of Patients with Non-Intake Lab Collection | 160      |

<sup>1</sup>Emergency sick calls are documented by each clinical responder. This number does not indicate distinct emergencies.

<sup>2</sup>Injury evaluations are documented at the encounter level and may contain duplicates. This number does not indicate distinct injuries.



## VIII. MDC

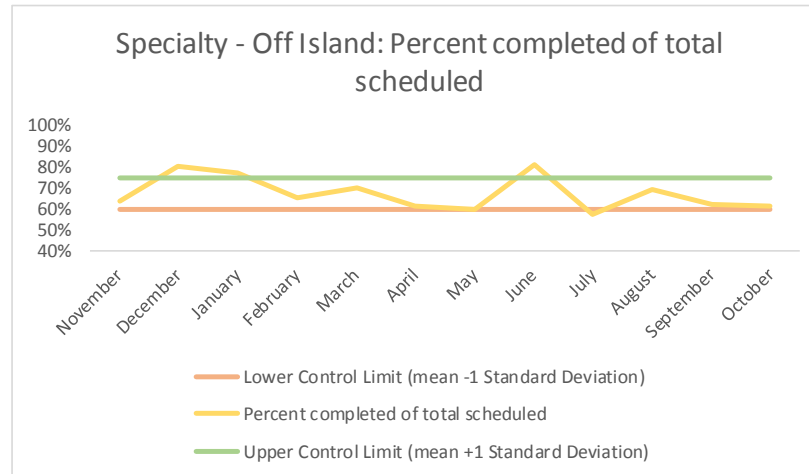
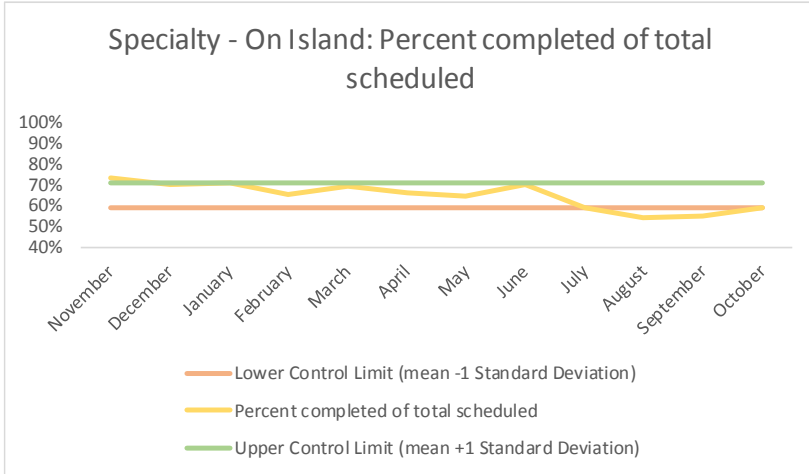
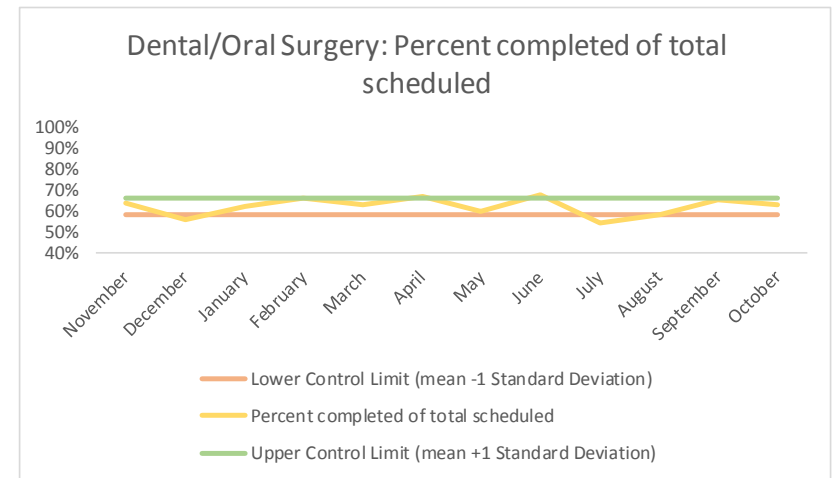
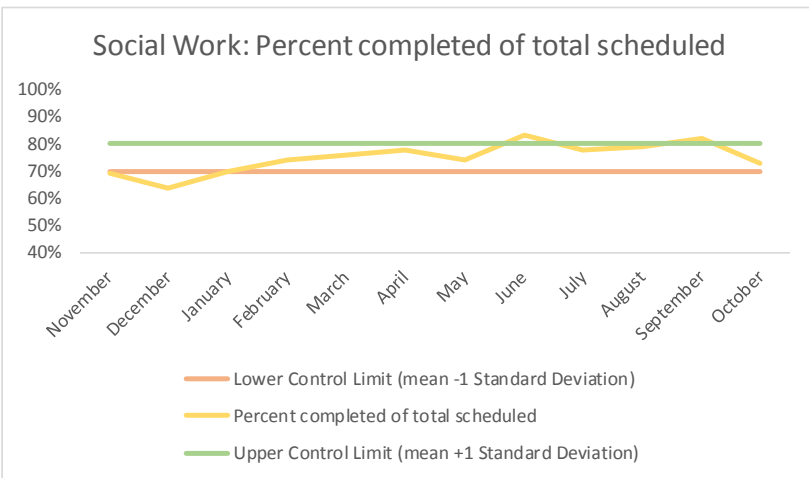
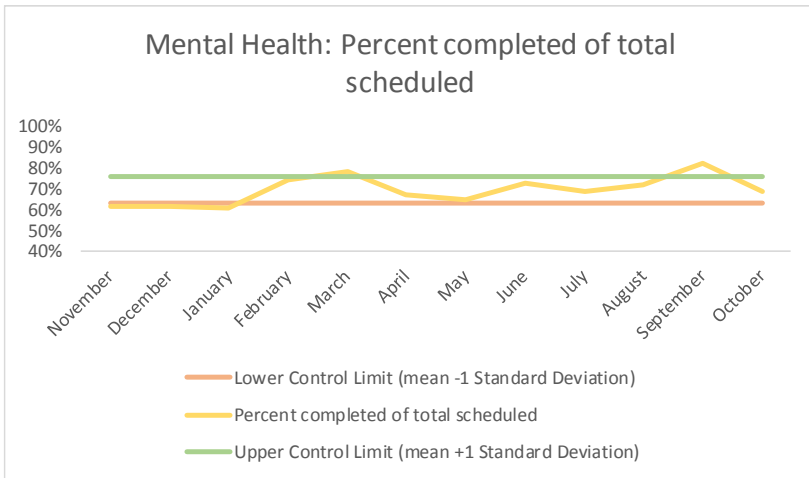
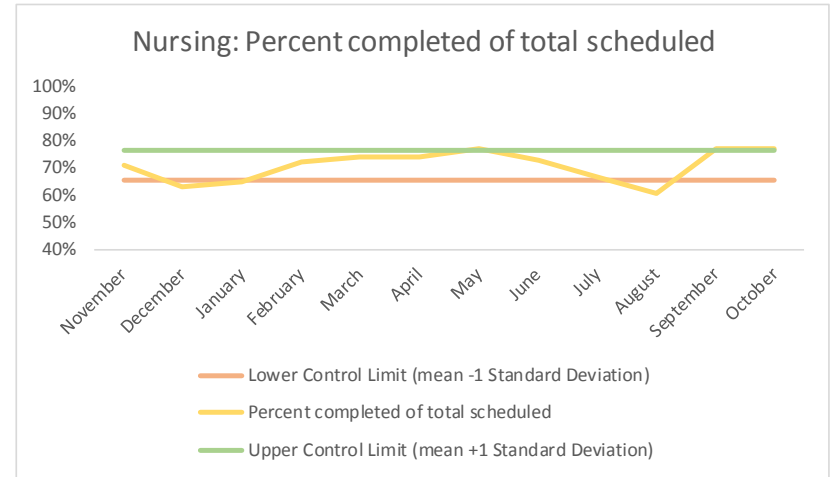
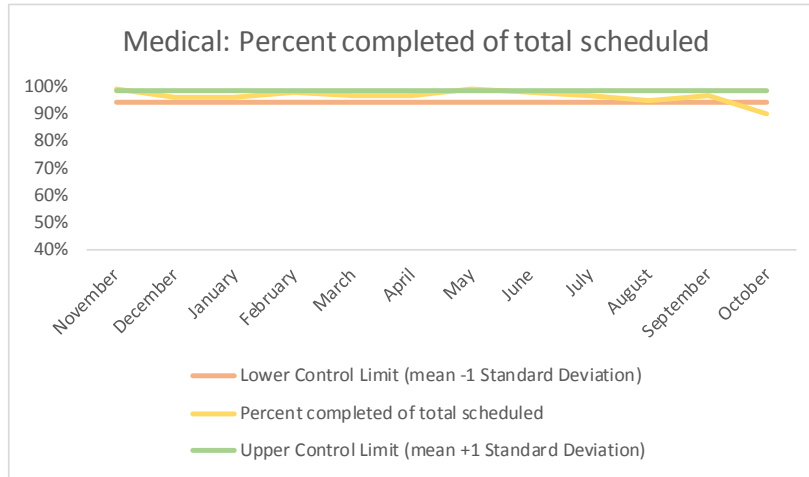
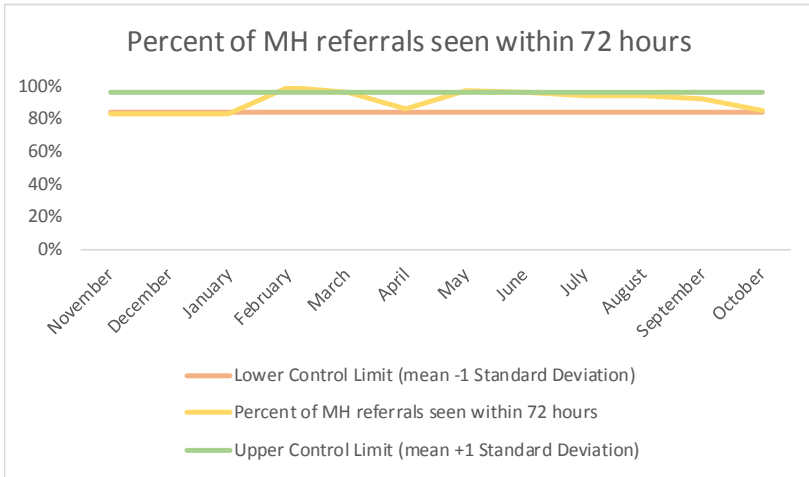
|          |  |          |
|----------|--|----------|
| <b>1</b> | <b>CHS Intakes (New Jail Admissions)</b>             | <b>N</b> |
| 1.1      | Completed CHS Intakes                                | 622      |
| 1.2      | Average time to completion once known to CHS (hours) | 2.7      |

|          |  |          |
|----------|--|----------|
| <b>2</b> | <b>Referrals made to mental health service</b> | <b>N</b> |
| 2.1      | Referrals made to mental health service        | 73       |
| 2.2      | Referrals seen within 72 hours                 | 62       |
| 2.3      | Percent seen within 72 hours                   | 85%      |

| 3  | Scheduled Services | Medical <sup>1</sup> |            | Nursing <sup>2</sup> |             | Mental Health |            | Social Work |            | Dental/Oral Surgery |            | Specialty Clinic - On Island |           | Specialty Clinic - Off Island |     | Substance Use |             | Total       |      |     |
|--|--------------------|----------------------|------------|----------------------|-------------|---------------|------------|-------------|------------|---------------------|------------|------------------------------|-----------|-------------------------------|-----|---------------|-------------|-------------|------|-----|
|  | Service Outcomes   | N                    | %          | N                    | %           | N             | %          | N           | %          | N                   | %          | N                            | %         | N                             | %   | N             | %           | N           | %    |     |
|  | Seen               | 270                  | 87%        | 485                  | 74%         | 801           | 66%        | 319         | 73%        | 171                 | 63%        | 105                          | 34%       | 18                            | 32% | Future Metric |             |             | 2169 | 67% |
| Refused & Verified                               | 6                  | 2%                   | 17         | 3%                   | 24          | 2%            | 1          | 0%          | 0          | 0%                  | 76         | 25%                          | 16        | 29%                           |     |               |             | 140         | 4%   |     |
| Not Produced by DOC                              | 20                 | 6%                   | 106        | 16%                  | 185         | 15%           | 84         | 19%         | 74         | 27%                 | 111        | 36%                          | 21        | 38%                           |     |               |             | 601         | 19%  |     |
| Out to Court                                     | 5                  | 2%                   | 40         | 6%                   | 115         | 10%           | 31         | 7%          | 8          | 3%                  | 5          | 2%                           | 0         | 0%                            |     |               |             | 204         | 6%   |     |
| Left Without Being Seen                          | 1                  | 0%                   | 0          | 0%                   | 5           | 0%            | 1          | 0%          | 4          | 1%                  | 2          | 1%                           | 0         | 0%                            |     |               |             | 13          | 0%   |     |
| Rescheduled by CHS                               | 3                  | 1%                   | 8          | 1%                   | 74          | 6%            | 1          | 0%          | 15         | 6%                  | 6          | 2%                           | 1         | 2%                            |     |               |             | 108         | 3%   |     |
| Rescheduled by Hospital                          | N/A                | N/A                  | N/A        | N/A                  | N/A         | N/A           | N/A        | N/A         | N/A        | N/A                 | N/A        | N/A                          | N/A       | 0                             | 0%  |               |             |             | 0    | N/A |
| No Longer Indicated                              | 7                  | 2%                   | 2          | 0%                   | 1           | 0%            | 0          | 0%          | 0          | 0%                  | 0          | 0%                           | N/A       | N/A                           |     |               |             | 10          | 0%   |     |
| <b>Total Scheduled Services</b>                  | <b>312</b>         | <b>100%</b>          | <b>658</b> | <b>100%</b>          | <b>1205</b> | <b>100%</b>   | <b>437</b> | <b>100%</b> | <b>272</b> | <b>100%</b>         | <b>305</b> | <b>100%</b>                  | <b>56</b> | <b>100%</b>                   |     |               | <b>3245</b> | <b>100%</b> |      |     |
| <sup>1</sup> Includes medical infirmary services |                    |                      |            |                      |             |               |            |             |            |                     |            |                              |           |                               |     |               |             |             |      |     |
| <sup>2</sup> Includes nursing infirmary services |                    |                      |            |                      |             |               |            |             |            |                     |            |                              |           |                               |     |               |             |             |      |     |

|          |                        |                |                |                      |                    |                            |                              |                               |                      |              |
|----------|------------------------|----------------|----------------|----------------------|--------------------|----------------------------|------------------------------|-------------------------------|----------------------|--------------|
| <b>4</b> | <b>Outcome Metrics</b> | <b>Medical</b> | <b>Nursing</b> | <b>Mental Health</b> | <b>Social Work</b> | <b>Dental/Oral Surgery</b> | <b>Specialty Clinic - On</b> | <b>Specialty Clinic - Off</b> | <b>Substance Use</b> | <b>Total</b> |
| 4.1      | Percent completed      | 90%            | 77%            | 69%                  | 73%                | 63%                        | 59%                          | 61%                           |                      | 71%          |

|  |   |          |
|--|---|----------|
| <b>5</b>   | <b>Unscheduled Services</b>                       | <b>N</b> |
| 5.1  | Routine Sick Call Completed                       | 883      |
| 5.2  | Emergency Sick Call Completed <sup>1</sup>        | 86       |
| 5.3  | Injury Evaluations <sup>2</sup>                   | 273      |
| 5.4  | Medical Add-Ons                                   | 52       |
| 5.5  | Number of Patients with Non-Intake Lab Collection | 186      |
| <sup>1</sup> Emergency sick calls are documented by each clinical responder. This number does not indicate distinct emergencies.                   |   |          |
| <sup>2</sup> Injury evaluations are documented at the encounter level and may contain duplicates. This number does not indicate distinct injuries. |   |          |



IX. NIC

|          |  |          |
|----------|--|----------|
| <b>1</b> | <b>CHS Intakes (New Jail Admissions)</b>             | <b>N</b> |
| 1.1      | Completed CHS Intakes                                | 0        |
| 1.2      | Average time to completion once known to CHS (hours) | 0        |

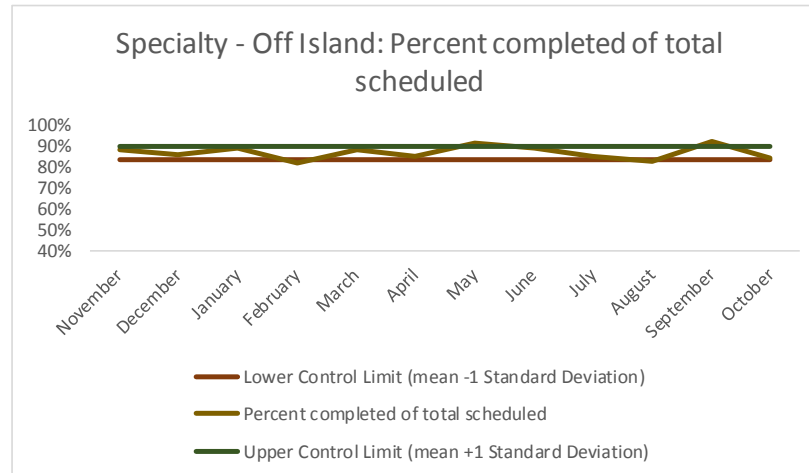
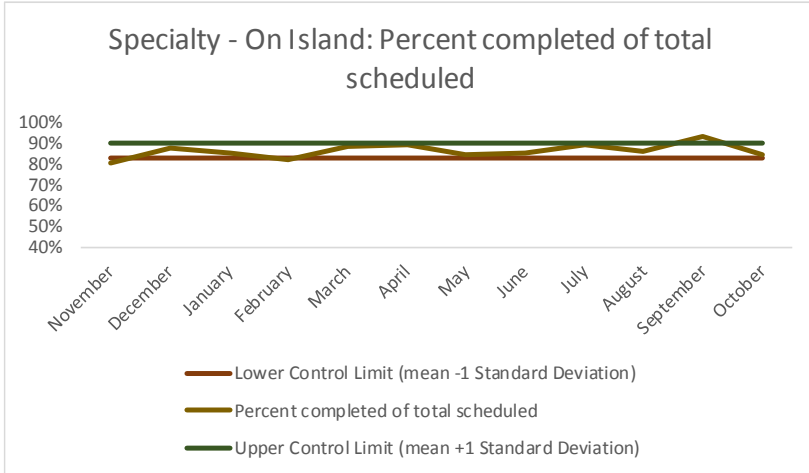
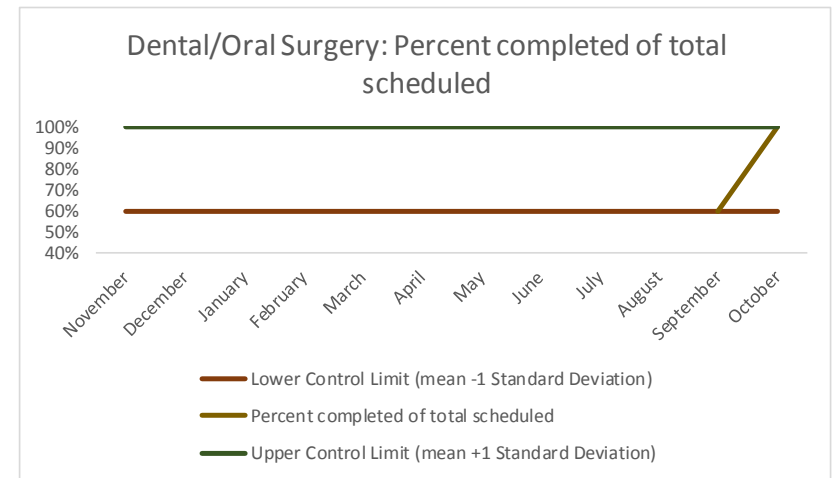
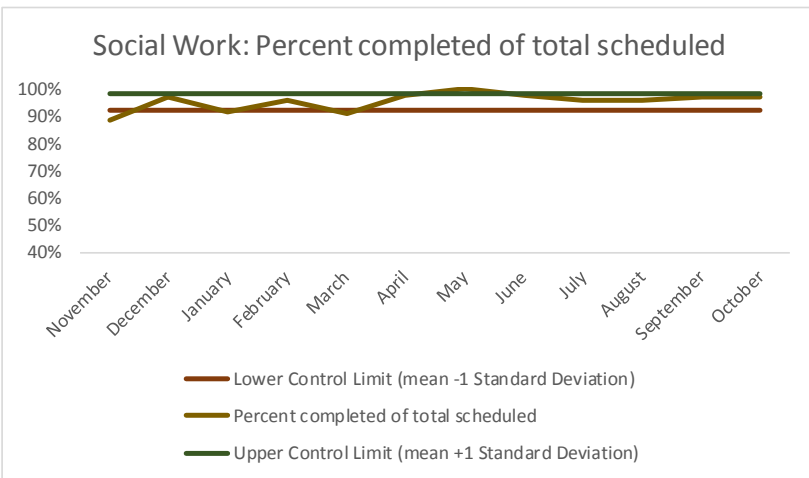
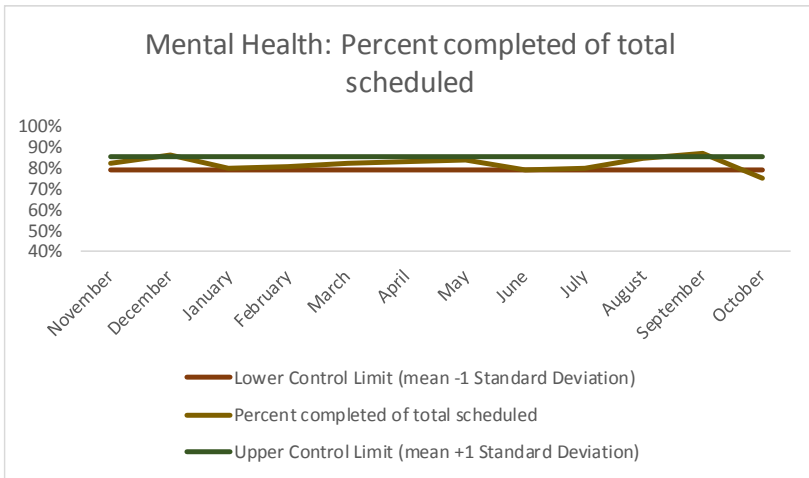
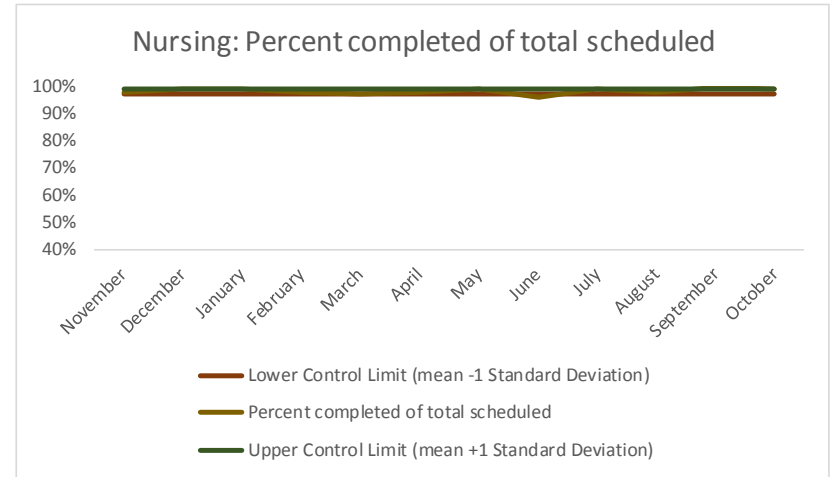
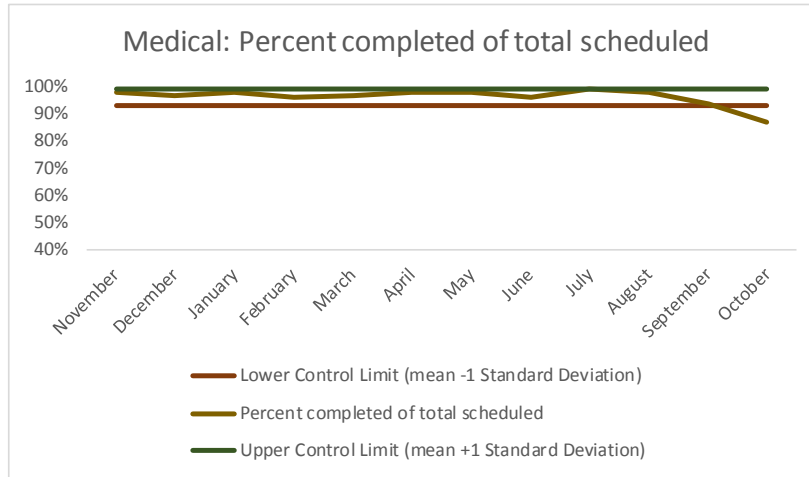
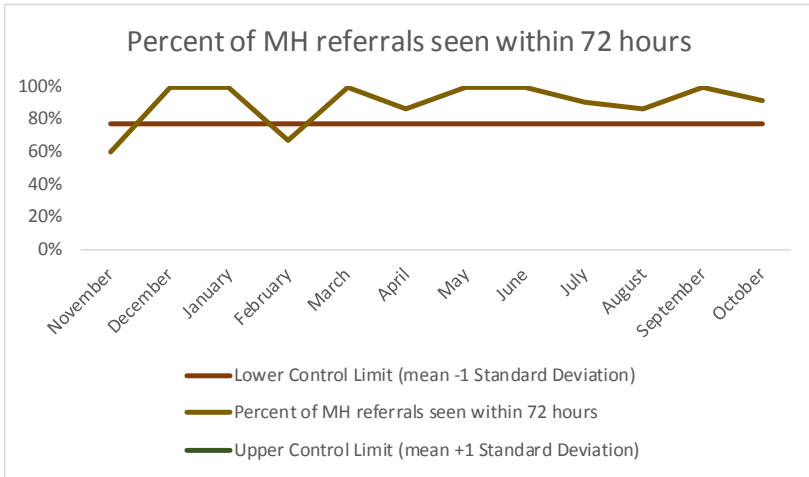
|          |  |          |
|----------|--|----------|
| <b>2</b> | <b>Referrals made to mental health service</b> | <b>N</b> |
| 2.1      | Referrals made to mental health service        | 11       |
| 2.2      | Referrals seen within 72 hours                 | 10       |
| 2.3      | Percent seen within 72 hours                   | 91%      |

|  | Scheduled Services              | Medical <sup>1</sup> |             | Nursing <sup>2</sup> |             | Mental Health |             | Social Work |             | Dental/Oral Surgery |             | Specialty Clinic - On Island |             | Specialty Clinic - Off Island |             | Substance Use        |     | Total |             |             |
|--|---------------------------------|----------------------|-------------|----------------------|-------------|---------------|-------------|-------------|-------------|---------------------|-------------|------------------------------|-------------|-------------------------------|-------------|----------------------|-----|-------|-------------|-------------|
|  | Service Outcomes                | N                    | %           | N                    | %           | N             | %           | N           | %           | N                   | %           | N                            | %           | N                             | %           | N                    | %   | N     | %           |             |
| <b>3</b>   | Seen                            | 183                  | 82%         | 1386                 | 98%         | 418           | 68%         | 184         | 97%         | 0                   | 0%          | 443                          | 68%         | 83                            | 57%         | <b>Future Metric</b> |     |       | 2697        | 83%         |
|  | Refused & Verified              | 6                    | 3%          | 24                   | 2%          | 32            | 5%          | 0           | 0%          | 1                   | 100%        | 100                          | 15%         | 40                            | 27%         |                      | 203 | 6%    |             |             |
|  | Not Produced by DOC             | 7                    | 3%          | 4                    | 0%          | 93            | 15%         | 4           | 2%          | 0                   | 0%          | 61                           | 9%          | 10                            | 7%          |                      | 179 | 6%    |             |             |
|  | Out to Court                    | 13                   | 6%          | 4                    | 0%          | 31            | 5%          | 2           | 1%          | 0                   | 0%          | 15                           | 2%          | 1                             | 1%          |                      | 66  | 2%    |             |             |
|  | Left Without Being Seen         | 0                    | 0%          | 0                    | 0%          | 3             | 0%          | 0           | 0%          | 0                   | 0%          | 0                            | 0%          | 0                             | 0%          |                      | 3   | 0%    |             |             |
|  | Rescheduled by CHS              | 8                    | 4%          | 1                    | 0%          | 27            | 4%          | 0           | 0%          | 0                   | 0%          | 29                           | 4%          | 6                             | 4%          |                      | 71  | 2%    |             |             |
|  | Rescheduled by Hospital         | N/A                  | N/A         | N/A                  | N/A         | N/A           | N/A         | N/A         | N/A         | N/A                 | N/A         | N/A                          | N/A         | N/A                           | 6           |                      | 4%  | 6     | N/A         |             |
|  | No Longer Indicated             | 7                    | 3%          | 0                    | 0%          | 11            | 2%          | 0           | 0%          | 0                   | 0%          | 0                            | 0%          | N/A                           | N/A         |                      | 18  | 1%    |             |             |
|  | <b>Total Scheduled Services</b> | <b>224</b>           | <b>100%</b> | <b>1419</b>          | <b>100%</b> | <b>615</b>    | <b>100%</b> | <b>190</b>  | <b>100%</b> | <b>1</b>            | <b>100%</b> | <b>648</b>                   | <b>100%</b> | <b>146</b>                    | <b>100%</b> |                      |     |       | <b>3243</b> | <b>100%</b> |
| <sup>1</sup> Includes medical infirmary services |                                 |                      |             |                      |             |               |             |             |             |                     |             |                              |             |                               |             |                      |     |       |             |             |
| <sup>2</sup> Includes nursing infirmary services |                                 |                      |             |                      |             |               |             |             |             |                     |             |                              |             |                               |             |                      |     |       |             |             |

|          |                        |                |                |                      |                    |                            |                              |                               |                      |              |
|----------|------------------------|----------------|----------------|----------------------|--------------------|----------------------------|------------------------------|-------------------------------|----------------------|--------------|
| <b>4</b> | <b>Outcome Metrics</b> | <b>Medical</b> | <b>Nursing</b> | <b>Mental Health</b> | <b>Social Work</b> | <b>Dental/Oral Surgery</b> | <b>Specialty Clinic - On</b> | <b>Specialty Clinic - Off</b> | <b>Substance Use</b> | <b>Total</b> |
| 4.1      | Percent completed      | 87%            | 99%            | 75%                  | 97%                | 100%                       | 84%                          | 84%                           |                      | 90%          |

|          |   |          |
|----------|---|----------|
| <b>5</b> | <b>Unscheduled Services</b>                       | <b>N</b> |
| 5.1      | Routine Sick Call Completed                       | 675      |
| 5.2      | Emergency Sick Call Completed <sup>1</sup>        | 28       |
| 5.3      | Injury Evaluations <sup>2</sup>                   | 122      |
| 5.4      | Medical Add-Ons                                   | 265      |
| 5.5      | Number of Patients with Non-Intake Lab Collection | 308      |

<sup>1</sup>Emergency sick calls are documented by each clinical responder. This number does not indicate distinct emergencies.  
<sup>2</sup>Injury evaluations are documented at the encounter level and may contain duplicates. This number does not indicate distinct injuries.





## X. OBCC

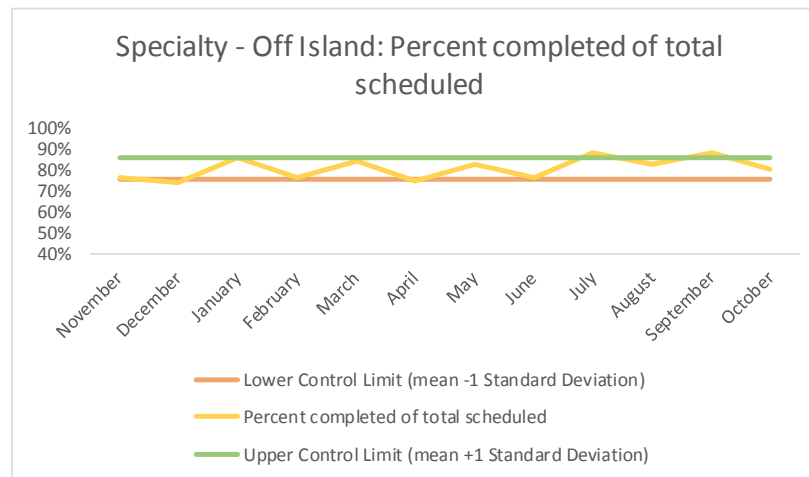
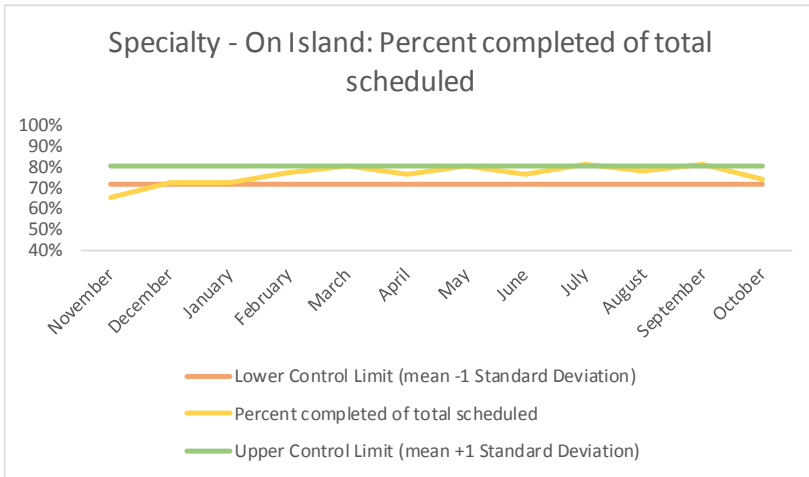
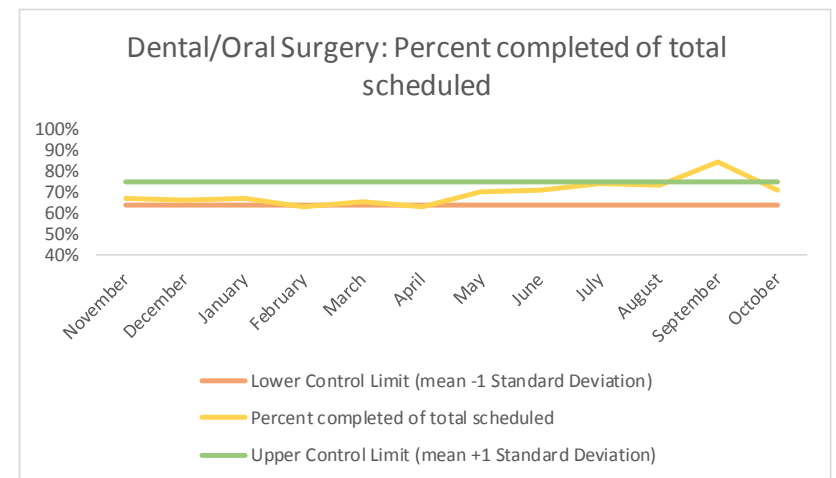
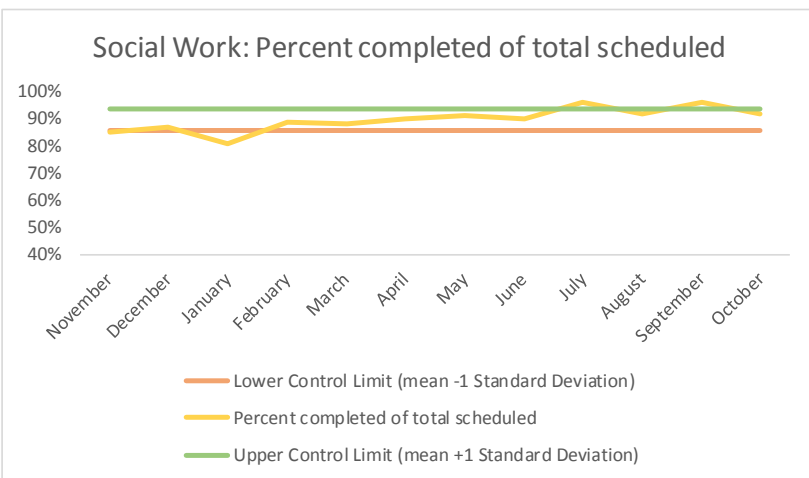
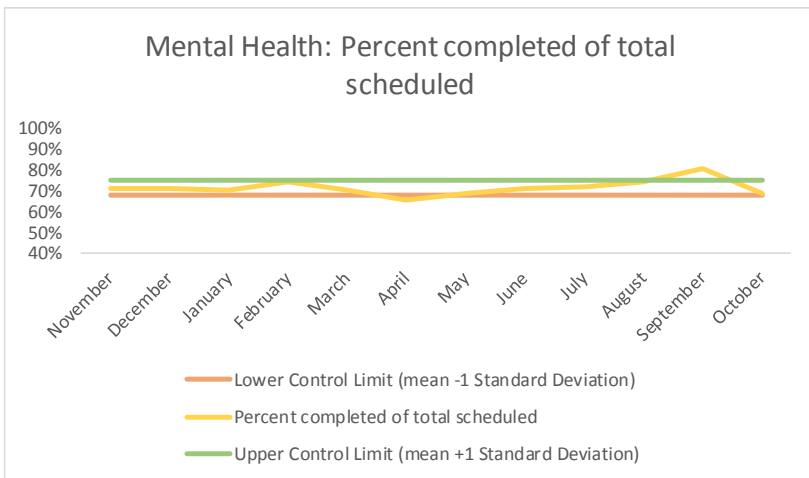
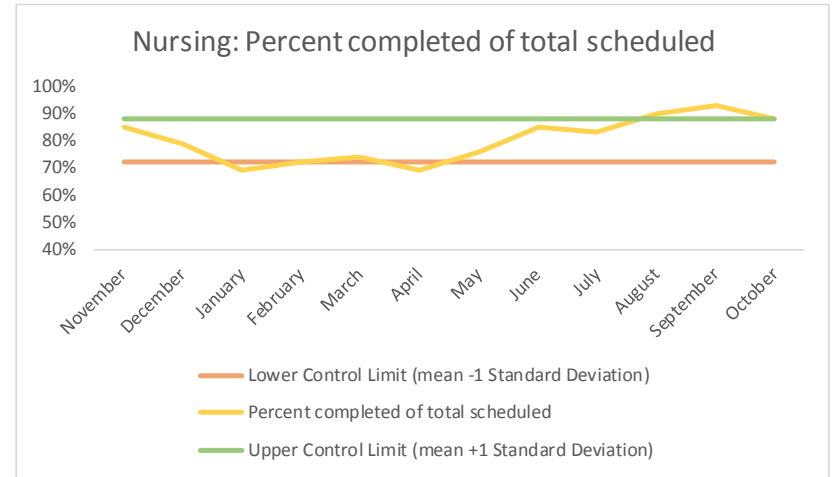
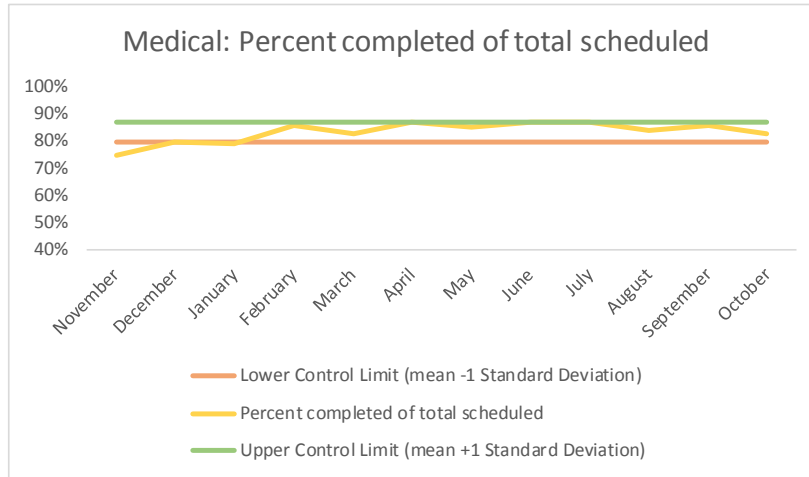
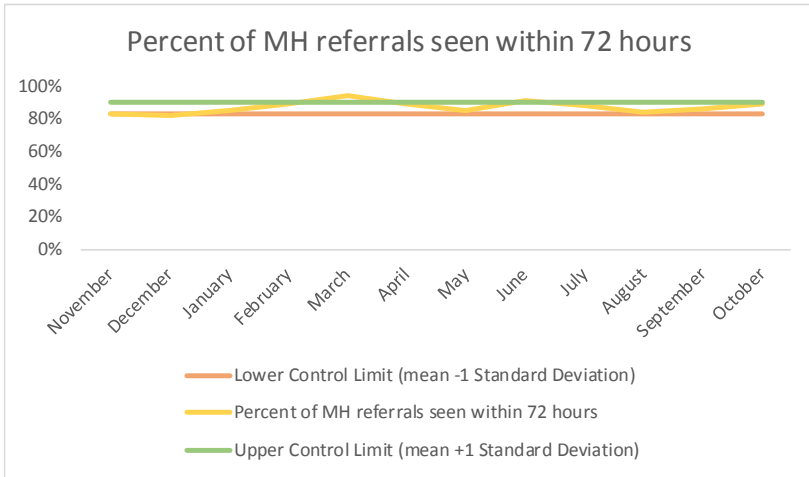
|          |  |          |
|----------|--|----------|
| <b>1</b> | <b>CHS Intakes (New Jail Admissions)</b>             | <b>N</b> |
| 1.1      | Completed CHS Intakes                                | 0        |
| 1.2      | Average time to completion once known to CHS (hours) | 0        |

|          |  |          |
|----------|--|----------|
| <b>2</b> | <b>Referrals made to mental health service</b> | <b>N</b> |
| 2.1      | Referrals made to mental health service        | 70       |
| 2.2      | Referrals seen within 72 hours                 | 62       |
| 2.3      | Percent seen within 72 hours                   | 89%      |

| 3 | Scheduled Services                               | Medical <sup>1</sup> |             | Nursing <sup>2</sup> |             | Mental Health |             | Social Work |             | Dental/Oral Surgery |             | Specialty Clinic - On Island |             | Specialty Clinic - Off Island |             | Substance Use |   | Total       |             |     |
|---|--|----------------------|-------------|----------------------|-------------|---------------|-------------|-------------|-------------|---------------------|-------------|------------------------------|-------------|-------------------------------|-------------|---------------|---|-------------|-------------|-----|
|   | Service Outcomes                                 | N                    | %           | N                    | %           | N             | %           | N           | %           | N                   | %           | N                            | %           | N                             | %           | N             | % | N           | %           |     |
|   | Seen   | 297                  | 78%         | 149                  | 78%         | 1408          | 64%         | 360         | 92%         | 277                 | 63%         | 109                          | 37%         | 24                            | 36%         | Future Metric |   |             | 2624        | 66% |
|   | Refused & Verified                               | 12                   | 3%          | 13                   | 7%          | 84            | 4%          | 0           | 0%          | 34                  | 8%          | 108                          | 37%         | 29                            | 44%         |               |   |             | 280         | 7%  |
|   | Not Produced by DOC                              | 50                   | 13%         | 16                   | 8%          | 455           | 21%         | 23          | 6%          | 79                  | 18%         | 52                           | 18%         | 8                             | 12%         |               |   |             | 683         | 17% |
|   | Out to Court                                     | 6                    | 2%          | 4                    | 2%          | 85            | 4%          | 6           | 2%          | 41                  | 9%          | 10                           | 3%          | 0                             | 0%          |               |   |             | 152         | 4%  |
|   | Left Without Being Seen                          | 2                    | 1%          | 0                    | 0%          | 34            | 2%          | 0           | 0%          | 3                   | 1%          | 1                            | 0%          | 0                             | 0%          |               |   |             | 40          | 1%  |
|   | Rescheduled by CHS                               | 4                    | 1%          | 2                    | 1%          | 88            | 4%          | 1           | 0%          | 3                   | 1%          | 15                           | 5%          | 3                             | 5%          |               |   |             | 116         | 3%  |
|   | Rescheduled by Hospital                          | N/A                  | N/A         | N/A                  | N/A         | N/A           | N/A         | N/A         | N/A         | N/A                 | N/A         | N/A                          | N/A         | 2                             | 3%          |               |   |             | 2           | N/A |
|   | No Longer Indicated                              | 12                   | 3%          | 6                    | 3%          | 35            | 2%          | 0           | 0%          | 0                   | 0%          | 0                            | 0%          | N/A                           | N/A         |               |   |             | 53          | 1%  |
|   | <b>Total Scheduled Services</b>                  | <b>383</b>           | <b>100%</b> | <b>190</b>           | <b>100%</b> | <b>2189</b>   | <b>100%</b> | <b>390</b>  | <b>100%</b> | <b>437</b>          | <b>100%</b> | <b>295</b>                   | <b>100%</b> | <b>66</b>                     | <b>100%</b> |               |   | <b>3950</b> | <b>100%</b> |     |
|   | <sup>1</sup> Includes medical infirmary services |                      |             |                      |             |               |             |             |             |                     |             |                              |             |                               |             |               |   |             |             |     |
|   | <sup>2</sup> Includes nursing infirmary services |                      |             |                      |             |               |             |             |             |                     |             |                              |             |                               |             |               |   |             |             |     |

|          |                        |                |                |                      |                    |                            |                              |                               |                      |              |
|----------|------------------------|----------------|----------------|----------------------|--------------------|----------------------------|------------------------------|-------------------------------|----------------------|--------------|
| <b>4</b> | <b>Outcome Metrics</b> | <b>Medical</b> | <b>Nursing</b> | <b>Mental Health</b> | <b>Social Work</b> | <b>Dental/Oral Surgery</b> | <b>Specialty Clinic - On</b> | <b>Specialty Clinic - Off</b> | <b>Substance Use</b> | <b>Total</b> |
| 4.1      | Percent completed      | 83%            | 88%            | 69%                  | 92%                | 71%                        | 74%                          | 80%                           |                      | 75%          |

|          |  |          |
|----------|--|----------|
| <b>5</b> | <b>Unscheduled Services</b>  | <b>N</b> |
| 5.1      | Routine Sick Call Completed  | 697      |
| 5.2      | Emergency Sick Call Completed <sup>1</sup>   | 15       |
| 5.3      | Injury Evaluations <sup>2</sup>  | 249      |
| 5.4      | Medical Add-Ons  | 31       |
| 5.5      | Number of Patients with Non-Intake Lab Collection  | 133      |
|          | <sup>1</sup> Emergency sick calls are documented by each clinical responder. This number does not indicate distinct emergencies.                   |          |
|          | <sup>2</sup> Injury evaluations are documented at the encounter level and may contain duplicates. This number does not indicate distinct injuries. |          |



## XI. RMSC

|          |  |          |
|----------|--|----------|
| <b>1</b> | <b>CHS Intakes (New Jail Admissions)</b>             | <b>N</b> |
| 1.1      | Completed CHS Intakes                                | 275      |
| 1.2      | Average time to completion once known to CHS (hours) | 4.0      |

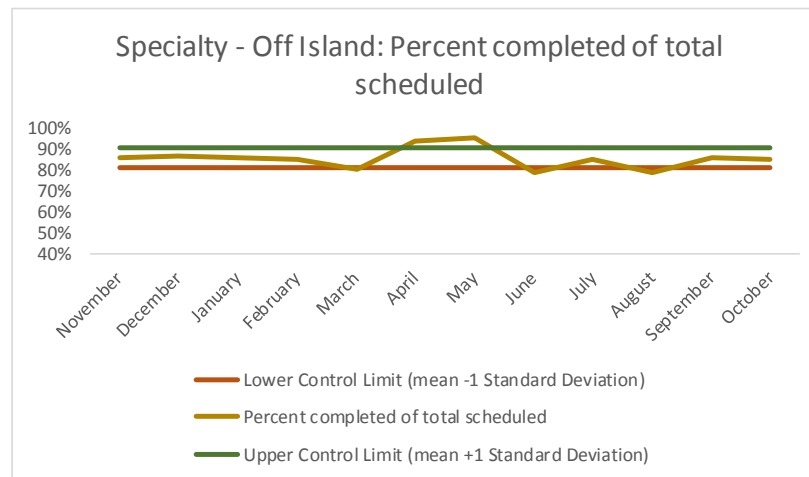
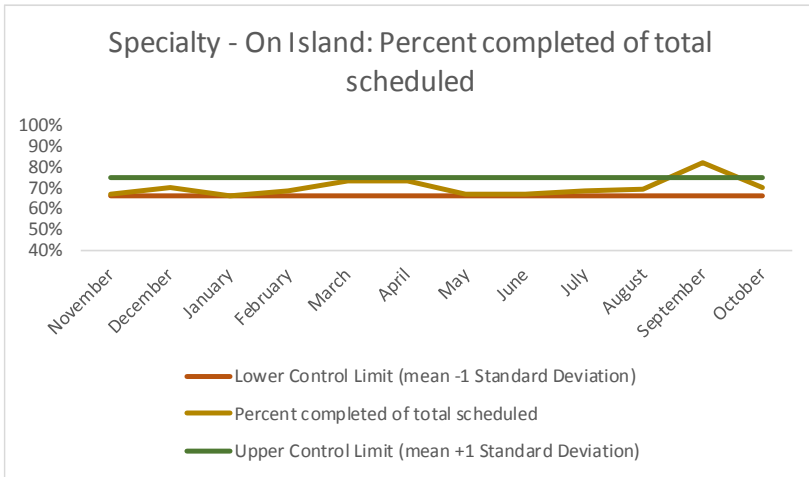
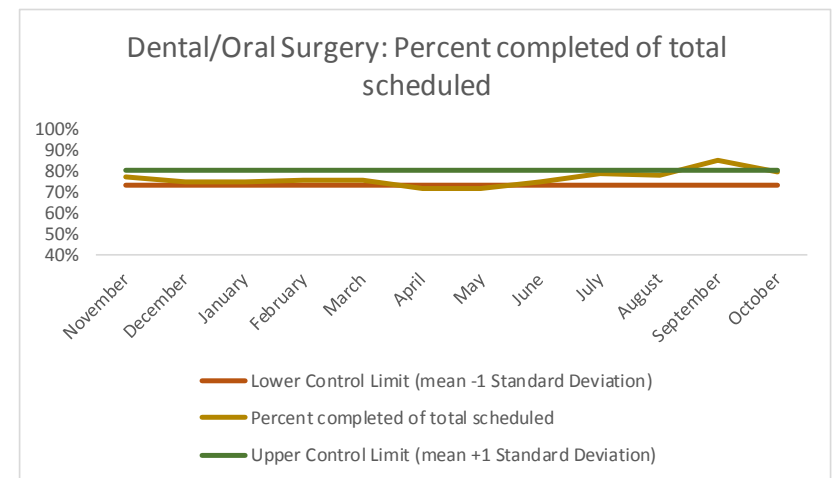
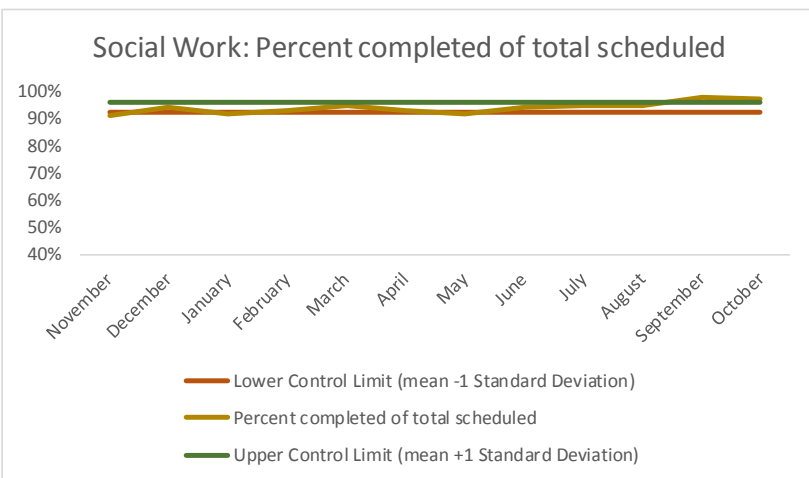
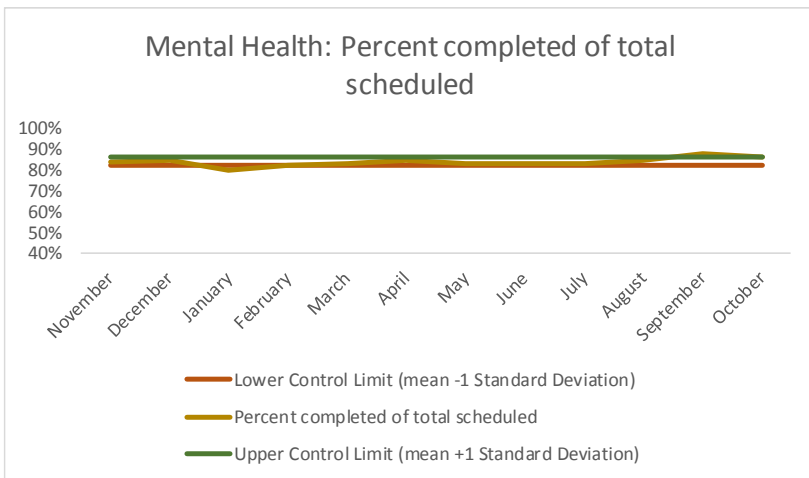
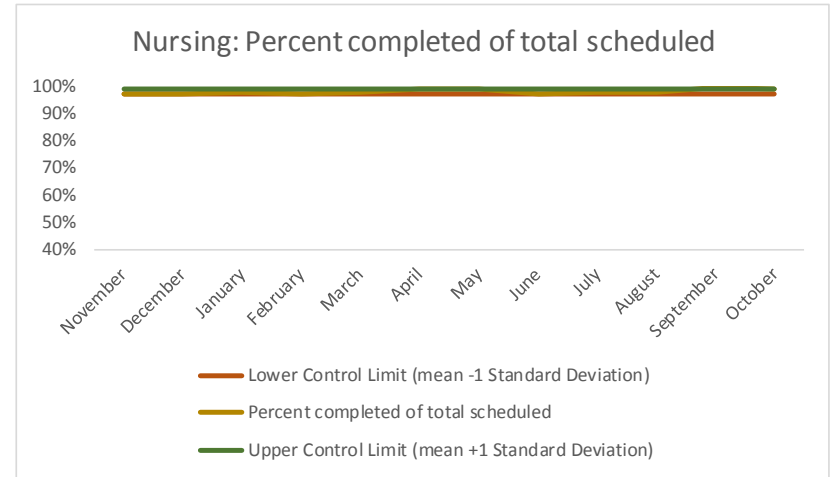
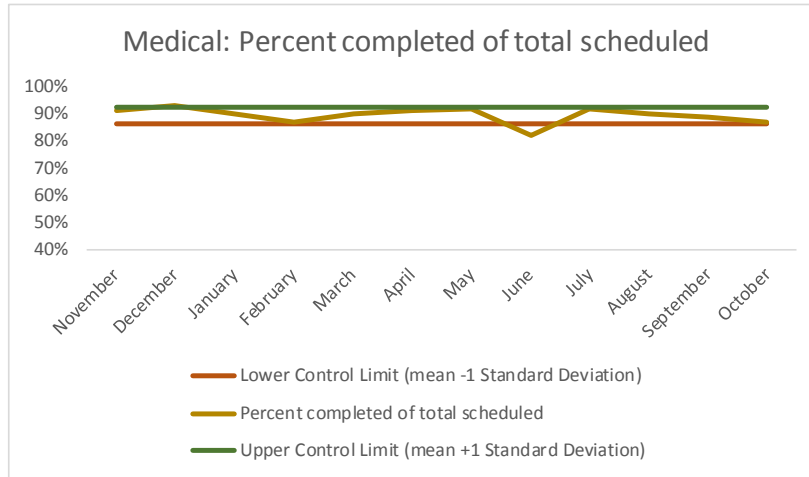
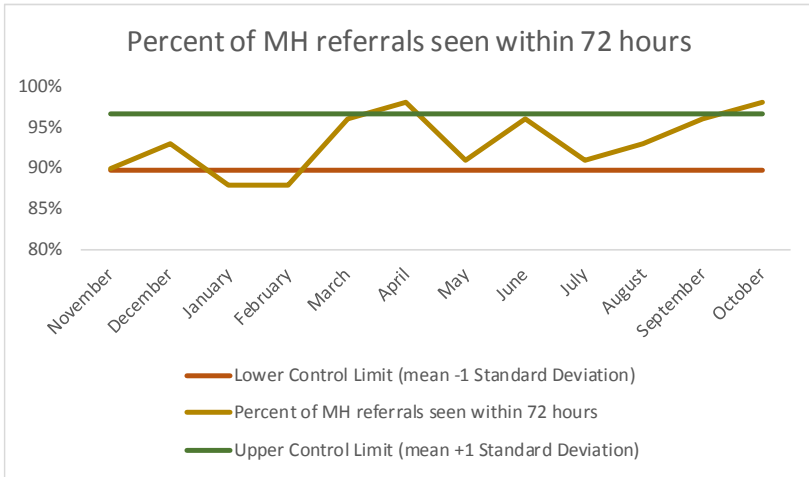
|          |  |          |
|----------|--|----------|
| <b>2</b> | <b>Referrals made to mental health service</b> | <b>N</b> |
| 2.1      | Referrals made to mental health service        | 131      |
| 2.2      | Referrals seen within 72 hours                 | 128      |
| 2.3      | Percent seen within 72 hours                   | 98%      |

| 3 | Scheduled Services                               | Medical <sup>1</sup> |             | Nursing <sup>2</sup> |             | Mental Health |             | Social Work |             | Dental/Oral Surgery |             | Specialty Clinic - On Island |             | Specialty Clinic - Off Island |             | Substance Use |   | Total |             |             |
|---|--|----------------------|-------------|----------------------|-------------|---------------|-------------|-------------|-------------|---------------------|-------------|------------------------------|-------------|-------------------------------|-------------|---------------|---|-------|-------------|-------------|
|   | Service Outcomes                                 | N                    | %           | N                    | %           | N             | %           | N           | %           | N                   | %           | N                            | %           | N                             | %           | N             | % | N     | %           |             |
|   | Seen   | 315                  | 82%         | 1274                 | 97%         | 2224          | 79%         | 1349        | 96%         | 296                 | 74%         | 551                          | 54%         | 21                            | 51%         | Future Metric |   |       | 6030        | 82%         |
|   | Refused & Verified                               | 18                   | 5%          | 25                   | 2%          | 166           | 6%          | 5           | 0%          | 24                  | 6%          | 167                          | 16%         | 14                            | 34%         |               |   |       | 419         | 6%          |
|   | Not Produced by DOC                              | 10                   | 3%          | 7                    | 1%          | 156           | 6%          | 18          | 1%          | 42                  | 11%         | 127                          | 12%         | 1                             | 2%          |               |   |       | 361         | 5%          |
|   | Out to Court                                     | 9                    | 2%          | 5                    | 0%          | 169           | 6%          | 24          | 2%          | 29                  | 7%          | 114                          | 11%         | 5                             | 12%         |               |   |       | 355         | 5%          |
|   | Left Without Being Seen                          | 1                    | 0%          | 0                    | 0%          | 11            | 0%          | 1           | 0%          | 6                   | 2%          | 18                           | 2%          | 0                             | 0%          |               |   |       | 37          | 1%          |
|   | Rescheduled by CHS                               | 29                   | 8%          | 3                    | 0%          | 63            | 2%          | 3           | 0%          | 1                   | 0%          | 42                           | 4%          | 0                             | 0%          |               |   |       | 141         | 2%          |
|   | Rescheduled by Hospital                          | N/A                  | N/A         | N/A                  | N/A         | N/A           | N/A         | N/A         | N/A         | N/A                 | N/A         | N/A                          | N/A         | 0                             | 0%          |               |   |       | 0           | N/A         |
|   | No Longer Indicated                              | 2                    | 1%          | 1                    | 0%          | 21            | 1%          | 1           | 0%          | 0                   | 0%          | 5                            | 0%          | N/A                           | N/A         |               |   |       | 30          | 0%          |
|   | <b>Total Scheduled Services</b>                  | <b>384</b>           | <b>100%</b> | <b>1315</b>          | <b>100%</b> | <b>2810</b>   | <b>100%</b> | <b>1401</b> | <b>100%</b> | <b>398</b>          | <b>100%</b> | <b>1024</b>                  | <b>100%</b> | <b>41</b>                     | <b>100%</b> |               |   |       | <b>7373</b> | <b>100%</b> |
|   | <sup>1</sup> Includes medical infirmary services |                      |             |                      |             |               |             |             |             |                     |             |                              |             |                               |             |               |   |       |             |             |
|   | <sup>2</sup> Includes nursing infirmary services |                      |             |                      |             |               |             |             |             |                     |             |                              |             |                               |             |               |   |       |             |             |

|          |                        |                |                |                      |                    |                            |                              |                               |                      |              |
|----------|------------------------|----------------|----------------|----------------------|--------------------|----------------------------|------------------------------|-------------------------------|----------------------|--------------|
| <b>4</b> | <b>Outcome Metrics</b> | <b>Medical</b> | <b>Nursing</b> | <b>Mental Health</b> | <b>Social Work</b> | <b>Dental/Oral Surgery</b> | <b>Specialty Clinic - On</b> | <b>Specialty Clinic - Off</b> | <b>Substance Use</b> | <b>Total</b> |
| 4.1      | Percent completed      | 87%            | 99%            | 86%                  | 97%                | 80%                        | 70%                          | 85%                           |                      | 88%          |

|          |   |          |
|----------|---|----------|
| <b>5</b> | <b>Unscheduled Services</b>                       | <b>N</b> |
| 5.1      | Routine Sick Call Completed                       | 0        |
| 5.2      | Emergency Sick Call Completed <sup>1</sup>        | 0        |
| 5.3      | Injury Evaluations <sup>2</sup>                   | 0        |
| 5.4      | Medical Add-Ons                                   | 73       |
| 5.5      | Number of Patients with Non-Intake Lab Collection | 380      |

<sup>1</sup>Emergency sick calls are documented by each clinical responder. This number does not indicate distinct emergencies.  
<sup>2</sup>Injury evaluations are documented at the encounter level and may contain duplicates. This number does not indicate distinct injuries.



## XII. RNDC

|            |  |          |
|------------|--|----------|
| <b>1</b>   | <b>CHS Intakes (New Jail Admissions)</b>             | <b>N</b> |
| <b>1.1</b> | Completed CHS Intakes                                | 45       |
| <b>1.2</b> | Average time to completion once known to CHS (hours) | 1.9      |

|            |  |          |
|------------|--|----------|
| <b>2</b>   | <b>Referrals made to mental health service</b> | <b>N</b> |
| <b>2.1</b> | Referrals made to mental health service        | 29       |
| <b>2.2</b> | Referrals seen within 72 hours                 | 26       |
| <b>2.3</b> | Percent seen within 72 hours                   | 90%      |

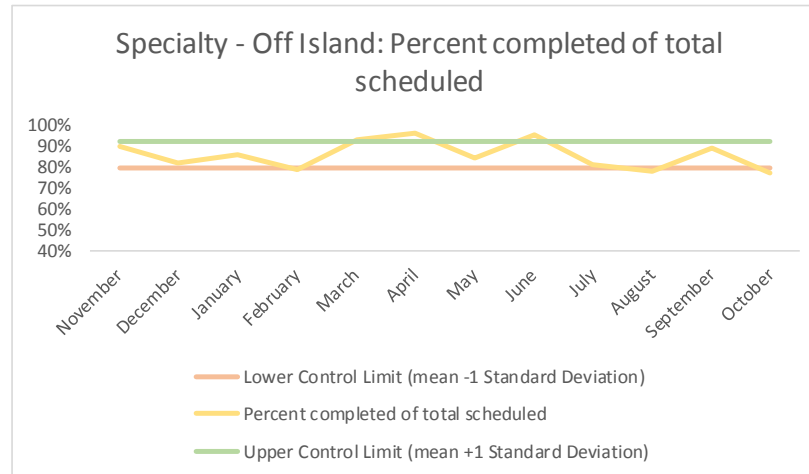
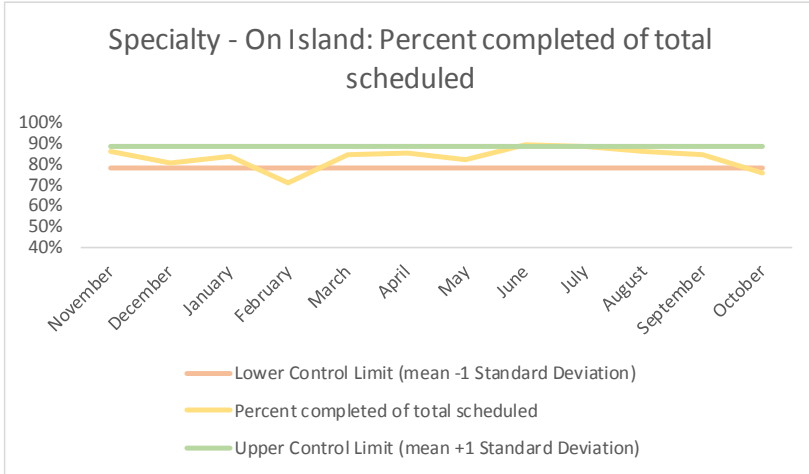
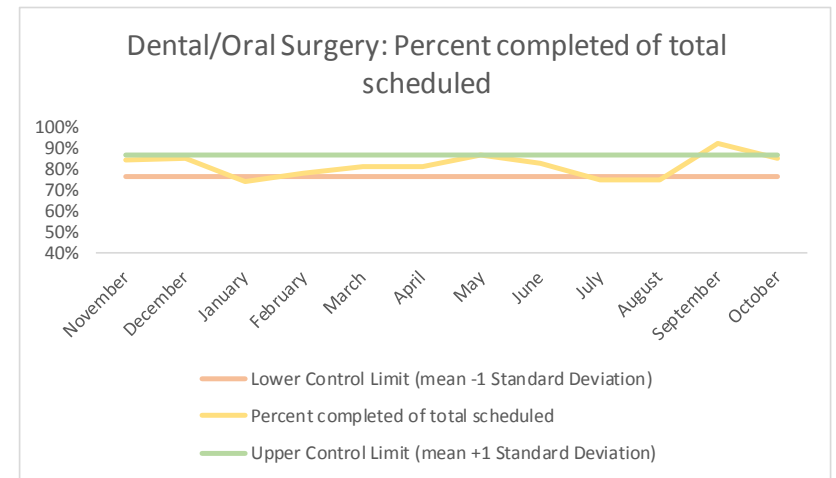
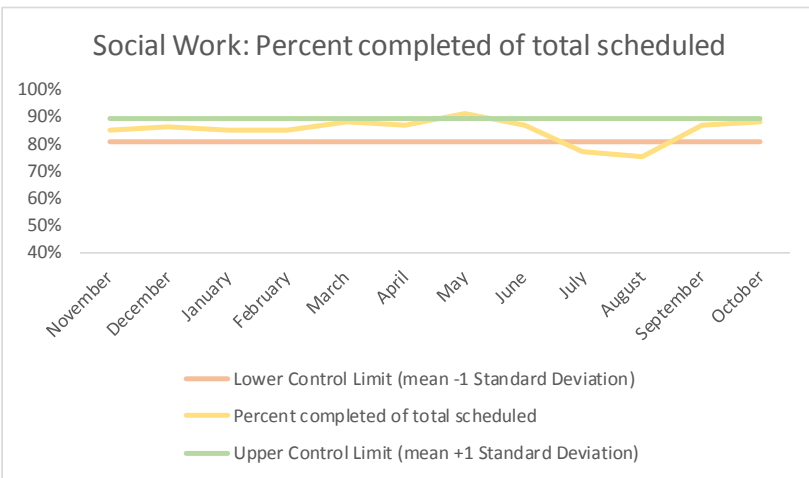
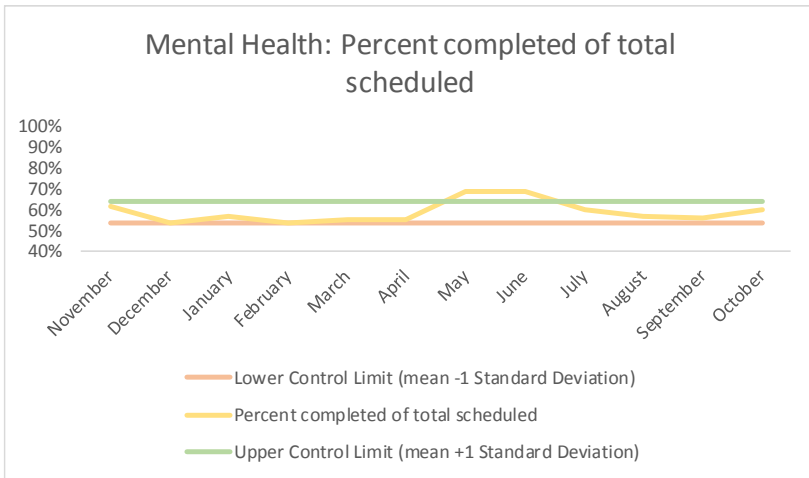
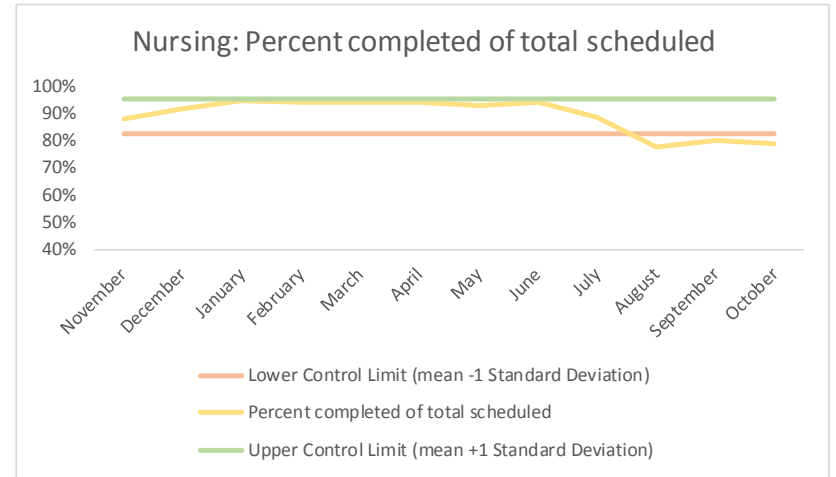
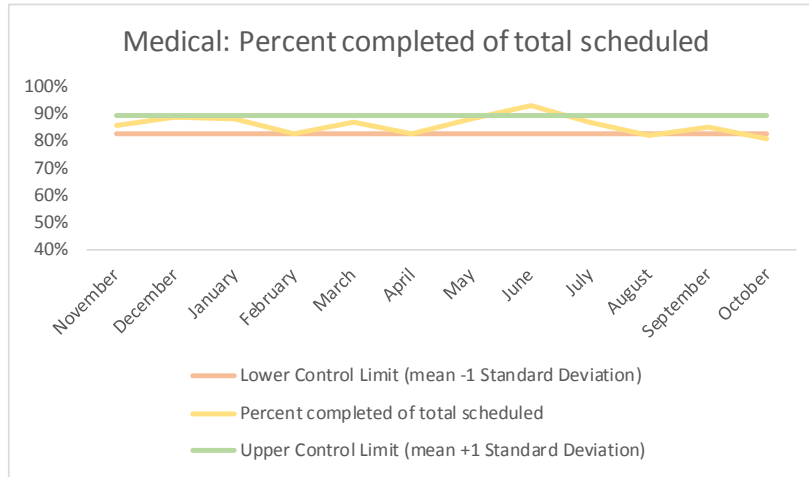
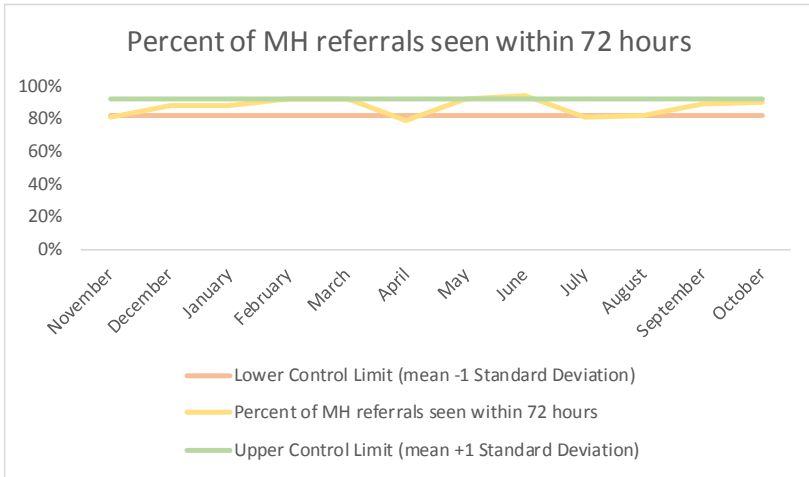
| 3                               | Scheduled Services | Medical <sup>1</sup> |            | Nursing <sup>2</sup> |             | Mental Health |            | Social Work |            | Dental/Oral Surgery |            | Specialty Clinic - On Island |           | Specialty Clinic - Off Island |     | Substance Use |             | Total       |   |
|---------------------------------|--------------------|----------------------|------------|----------------------|-------------|---------------|------------|-------------|------------|---------------------|------------|------------------------------|-----------|-------------------------------|-----|---------------|-------------|-------------|---|
|                                 | Service Outcomes   | N                    | %          | N                    | %           | N             | %          | N           | %          | N                   | %          | N                            | %         | N                             | %   | N             | %           | N           | % |
|                                 | Seen               | 95                   | 66%        | 124                  | 79%         | 606           | 50%        | 198         | 88%        | 90                  | 73%        | 58                           | 45%       | 10                            | 29% | Future Metric | 1181        | 58%         |   |
| Refused & Verified              | 12                 | 8%                   | 0          | 0%                   | 105         | 9%            | 0          | 0%          | 15         | 12%                 | 39         | 30%                          | 17        | 49%                           | 188 |               | 9%          |             |   |
| Not Produced by DOC             | 20                 | 14%                  | 27         | 17%                  | 340         | 28%           | 17         | 8%          | 7          | 6%                  | 21         | 16%                          | 4         | 11%                           | 436 |               | 22%         |             |   |
| Out to Court                    | 5                  | 3%                   | 5          | 3%                   | 54          | 4%            | 10         | 4%          | 10         | 8%                  | 6          | 5%                           | 0         | 0%                            | 90  |               | 4%          |             |   |
| Left Without Being Seen         | 0                  | 0%                   | 0          | 0%                   | 9           | 1%            | 0          | 0%          | 2          | 2%                  | 0          | 0%                           | 0         | 0%                            | 11  |               | 1%          |             |   |
| Rescheduled by CHS              | 0                  | 0%                   | 1          | 1%                   | 68          | 6%            | 0          | 0%          | 0          | 0%                  | 5          | 4%                           | 0         | 0%                            | 74  |               | 4%          |             |   |
| Rescheduled by Hospital         | N/A                | N/A                  | N/A        | N/A                  | N/A         | N/A           | N/A        | N/A         | N/A        | N/A                 | N/A        | N/A                          | 4         | 11%                           | 4   |               | N/A         |             |   |
| No Longer Indicated             | 11                 | 8%                   | 0          | 0%                   | 28          | 2%            | 0          | 0%          | 0          | 0%                  | 0          | 0%                           | N/A       | N/A                           | 39  |               | 2%          |             |   |
| <b>Total Scheduled Services</b> | <b>143</b>         | <b>100%</b>          | <b>157</b> | <b>100%</b>          | <b>1210</b> | <b>100%</b>   | <b>225</b> | <b>100%</b> | <b>124</b> | <b>100%</b>         | <b>129</b> | <b>100%</b>                  | <b>35</b> | <b>100%</b>                   |     |               | <b>2023</b> | <b>100%</b> |   |

<sup>1</sup>Includes medical infirmary services  
<sup>2</sup>Includes nursing infirmary services

|            |                        |                |                |                      |                    |                            |                              |                               |                      |              |
|------------|------------------------|----------------|----------------|----------------------|--------------------|----------------------------|------------------------------|-------------------------------|----------------------|--------------|
| <b>4</b>   | <b>Outcome Metrics</b> | <b>Medical</b> | <b>Nursing</b> | <b>Mental Health</b> | <b>Social Work</b> | <b>Dental/Oral Surgery</b> | <b>Specialty Clinic - On</b> | <b>Specialty Clinic - Off</b> | <b>Substance Use</b> | <b>Total</b> |
| <b>4.1</b> | Percent completed      | 81%            | 79%            | 60%                  | 88%                | 85%                        | 75%                          | 77%                           |                      | 69%          |

|            |   |          |
|------------|---|----------|
| <b>5</b>   | <b>Unscheduled Services</b>                       | <b>N</b> |
| <b>5.1</b> | Routine Sick Call Completed                       | 330      |
| <b>5.2</b> | Emergency Sick Call Completed <sup>1</sup>        | 33       |
| <b>5.3</b> | Injury Evaluations <sup>2</sup>                   | 268      |
| <b>5.4</b> | Medical Add-Ons                                   | 51       |
| <b>5.5</b> | Number of Patients with Non-Intake Lab Collection | 119      |

<sup>1</sup>Emergency sick calls are documented by each clinical responder. This number does not indicate distinct emergencies.  
<sup>2</sup>Injury evaluations are documented at the encounter level and may contain duplicates. This number does not indicate distinct injuries.



XIII. VCBC

|          |  |          |
|----------|--|----------|
| <b>1</b> | <b>CHS Intakes (New Jail Admissions)</b>             | <b>N</b> |
| 1.1      | Completed CHS Intakes                                | 690      |
| 1.2      | Average time to completion once known to CHS (hours) | 3.5      |

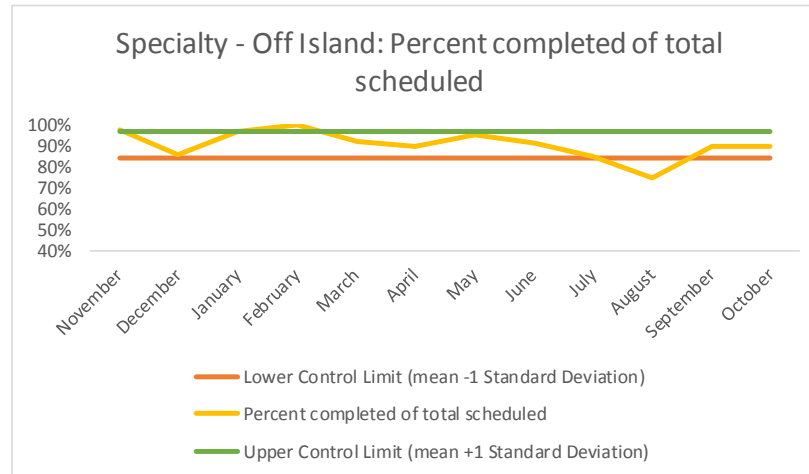
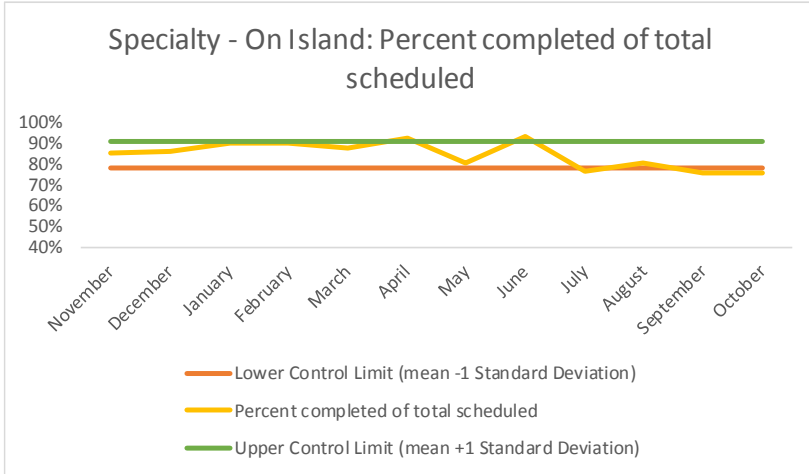
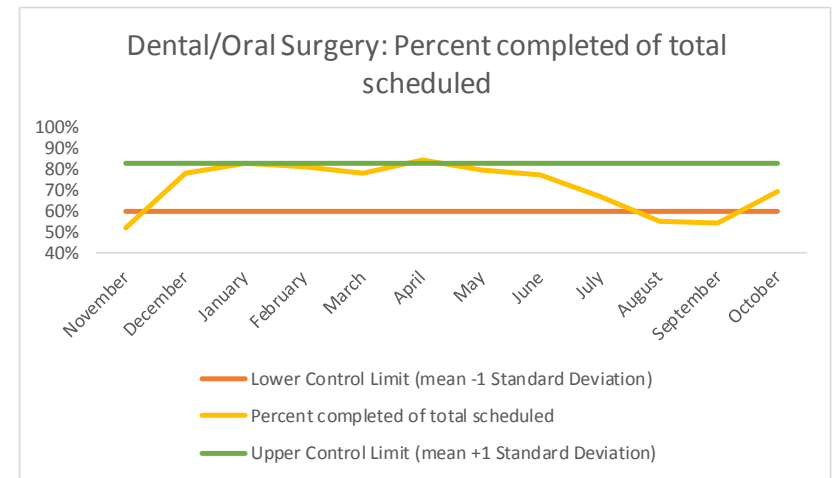
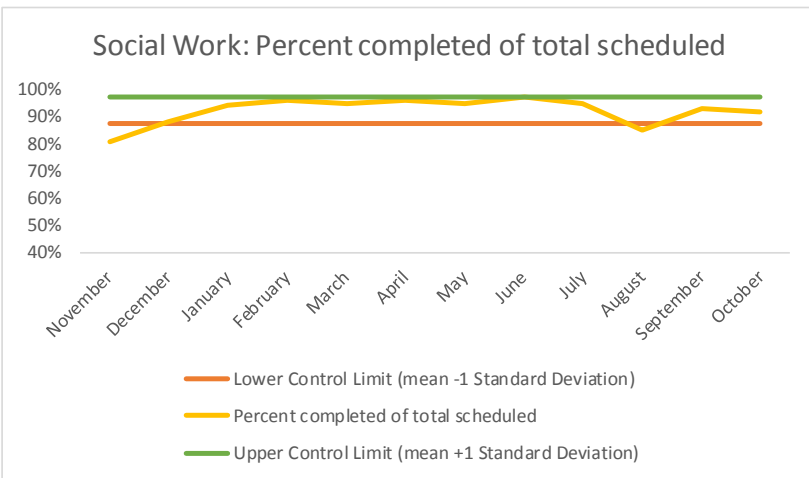
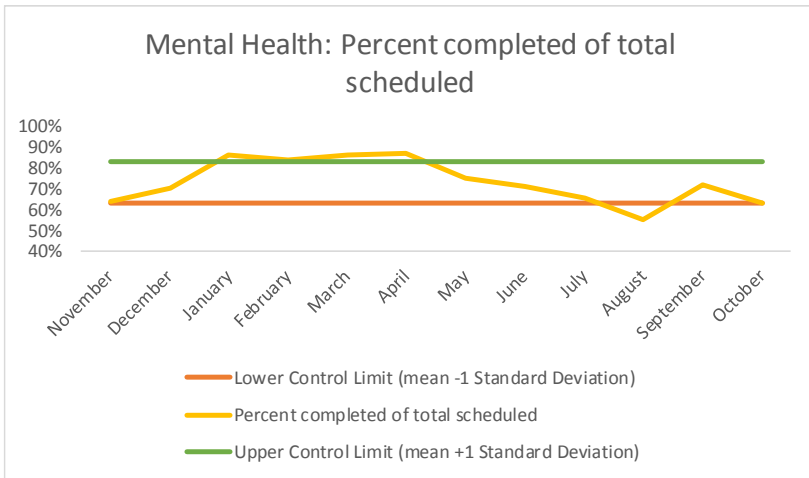
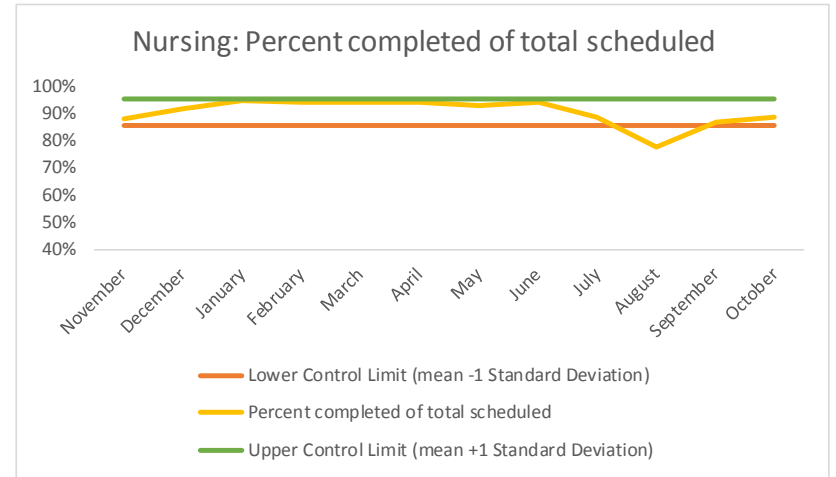
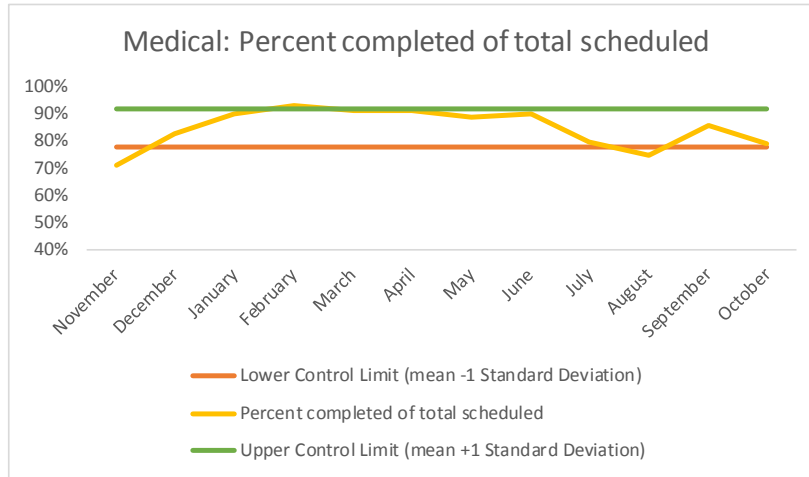
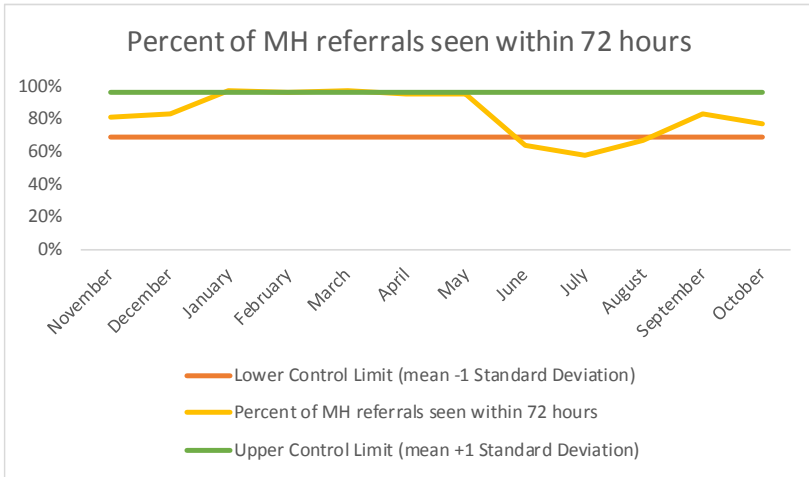
|          |  |          |
|----------|--|----------|
| <b>2</b> | <b>Referrals made to mental health service</b> | <b>N</b> |
| 2.1      | Referrals made to mental health service        | 60       |
| 2.2      | Referrals seen within 72 hours                 | 46       |
| 2.3      | Percent seen within 72 hours                   | 77%      |

| 3 | Scheduled Services                               | Medical <sup>1</sup> |             | Nursing <sup>2</sup> |             | Mental Health |             | Social Work |             | Dental/Oral Surgery |             | Specialty Clinic - On Island |             | Specialty Clinic - Off Island |             | Substance Use |   | Total       |             |     |
|---|--|----------------------|-------------|----------------------|-------------|---------------|-------------|-------------|-------------|---------------------|-------------|------------------------------|-------------|-------------------------------|-------------|---------------|---|-------------|-------------|-----|
|   | Service Outcomes                                 | N                    | %           | N                    | %           | N             | %           | N           | %           | N                   | %           | N                            | %           | N                             | %           | N             | % | N           | %           |     |
|   | Seen   | 431                  | 76%         | 1244                 | 87%         | 673           | 57%         | 323         | 88%         | 218                 | 65%         | 70                           | 36%         | 26                            | 51%         | Future Metric |   |             | 2985        | 72% |
|   | Refused & Verified                               | 13                   | 2%          | 9                    | 1%          | 58            | 5%          | 13          | 4%          | 13                  | 4%          | 76                           | 39%         | 20                            | 39%         |               |   |             | 202         | 5%  |
|   | Not Produced by DOC                              | 52                   | 9%          | 136                  | 10%         | 142           | 12%         | 18          | 5%          | 65                  | 19%         | 29                           | 15%         | 3                             | 6%          |               |   |             | 445         | 11% |
|   | Out to Court                                     | 18                   | 3%          | 8                    | 1%          | 101           | 9%          | 8           | 2%          | 19                  | 6%          | 12                           | 6%          | 0                             | 0%          |               |   |             | 166         | 4%  |
|   | Left Without Being Seen                          | 3                    | 1%          | 3                    | 0%          | 6             | 1%          | 0           | 0%          | 5                   | 1%          | 0                            | 0%          | 0                             | 0%          |               |   |             | 17          | 0%  |
|   | Rescheduled by CHS                               | 47                   | 8%          | 12                   | 1%          | 177           | 15%         | 3           | 1%          | 15                  | 4%          | 8                            | 4%          | 0                             | 0%          |               |   |             | 262         | 6%  |
|   | Rescheduled by Hospital                          | N/A                  | N/A         | N/A                  | N/A         | N/A           | N/A         | N/A         | N/A         | N/A                 | N/A         | N/A                          | N/A         | 2                             | 4%          |               |   |             | 2           | N/A |
|   | No Longer Indicated                              | 1                    | 0%          | 18                   | 1%          | 21            | 2%          | 2           | 1%          | 1                   | 0%          | 0                            | 0%          | N/A                           | N/A         |               |   |             | 43          | 1%  |
|   | <b>Total Scheduled Services</b>                  | <b>565</b>           | <b>100%</b> | <b>1430</b>          | <b>100%</b> | <b>1178</b>   | <b>100%</b> | <b>367</b>  | <b>100%</b> | <b>336</b>          | <b>100%</b> | <b>195</b>                   | <b>100%</b> | <b>51</b>                     | <b>100%</b> |               |   | <b>4122</b> | <b>100%</b> |     |
|   | <sup>1</sup> Includes medical infirmary services |                      |             |                      |             |               |             |             |             |                     |             |                              |             |                               |             |               |   |             |             |     |
|   | <sup>2</sup> Includes nursing infirmary services |                      |             |                      |             |               |             |             |             |                     |             |                              |             |                               |             |               |   |             |             |     |

|          |                        |                |                |                      |                    |                            |                              |                               |                      |              |
|----------|------------------------|----------------|----------------|----------------------|--------------------|----------------------------|------------------------------|-------------------------------|----------------------|--------------|
| <b>4</b> | <b>Outcome Metrics</b> | <b>Medical</b> | <b>Nursing</b> | <b>Mental Health</b> | <b>Social Work</b> | <b>Dental/Oral Surgery</b> | <b>Specialty Clinic - On</b> | <b>Specialty Clinic - Off</b> | <b>Substance Use</b> | <b>Total</b> |
| 4.1      | Percent completed      | 79%            | 89%            | 63%                  | 92%                | 69%                        | 75%                          | 90%                           |                      | 78%          |

|          |   |          |
|----------|---|----------|
| <b>5</b> | <b>Unscheduled Services</b>                       | <b>N</b> |
| 5.1      | Routine Sick Call Completed                       | 934      |
| 5.2      | Emergency Sick Call Completed <sup>1</sup>        | 76       |
| 5.3      | Injury Evaluations <sup>2</sup>                   | 184      |
| 5.4      | Medical Add-Ons                                   | 356      |
| 5.5      | Number of Patients with Non-Intake Lab Collection | 207      |

<sup>1</sup>Emergency sick calls are documented by each clinical responder. This number does not indicate distinct emergencies.  
<sup>2</sup>Injury evaluations are documented at the encounter level and may contain duplicates. This number does not indicate distinct injuries.





XIV. WF

|          |  |          |
|----------|--|----------|
| <b>1</b> | <b>CHS Intakes (New Jail Admissions)</b>             | <b>N</b> |
| 1.1      | Completed CHS Intakes                                | 0        |
| 1.2      | Average time to completion once known to CHS (hours) | 0        |

|          |  |          |
|----------|--|----------|
| <b>2</b> | <b>Referrals made to mental health service</b> | <b>N</b> |
| 2.1      | Referrals made to mental health service        | 1        |
| 2.2      | Referrals seen within 72 hours                 | 1        |
| 2.3      | Percent seen within 72 hours                   | 100%     |

| 3 | Scheduled Services                               | Medical <sup>1</sup> |             | Nursing <sup>2</sup> |             | Mental Health |             | Social Work |             | Dental/Oral Surgery |           | Specialty Clinic - On Island |             | Specialty Clinic - Off Island |             | Substance Use |   | Total      |             |
|---|--|----------------------|-------------|----------------------|-------------|---------------|-------------|-------------|-------------|---------------------|-----------|------------------------------|-------------|-------------------------------|-------------|---------------|---|------------|-------------|
|   | Service Outcomes                                 | N                    | %           | N                    | %           | N             | %           | N           | %           | N                   | %         | N                            | %           | N                             | %           | N             | % | N          | %           |
|   | Seen   | 13                   | 81%         | 688                  | 97%         | 46            | 58%         | 11          | 100%        | 0                   | 0%        | 9                            | 53%         | 5                             | 56%         | Future Metric |   | 772        | 92%         |
|   | Refused & Verified                               | 1                    | 6%          | 12                   | 2%          | 6             | 8%          | 0           | 0%          | 0                   | 0%        | 5                            | 29%         | 0                             | 0%          |               |   | 24         | 3%          |
|   | Not Produced by DOC                              | 2                    | 13%         | 2                    | 0%          | 11            | 14%         | 0           | 0%          | 0                   | 0%        | 1                            | 6%          | 4                             | 44%         |               |   | 20         | 2%          |
|   | Out to Court                                     | 0                    | 0%          | 4                    | 1%          | 3             | 4%          | 0           | 0%          | 0                   | 0%        | 0                            | 0%          | 0                             | 0%          |               |   | 7          | 1%          |
|   | Left Without Being Seen                          | 0                    | 0%          | 2                    | 0%          | 0             | 0%          | 0           | 0%          | 0                   | 0%        | 0                            | 0%          | 0                             | 0%          |               |   | 2          | 0%          |
|   | Rescheduled by CHS                               | 0                    | 0%          | 0                    | 0%          | 10            | 13%         | 0           | 0%          | 0                   | 0%        | 2                            | 12%         | 0                             | 0%          |               |   | 12         | 1%          |
|   | Rescheduled by Hospital                          | N/A                  | N/A         | N/A                  | N/A         | N/A           | N/A         | N/A         | N/A         | N/A                 | N/A       | N/A                          | N/A         | 0                             | 0%          |               |   | 0          | N/A         |
|   | No Longer Indicated                              | 0                    | 0%          | 1                    | 0%          | 3             | 4%          | 0           | 0%          | 0                   | 0%        | 0                            | 0%          | N/A                           | N/A         |               |   | 4          | 0%          |
|   | <b>Total Scheduled Services</b>                  | <b>16</b>            | <b>100%</b> | <b>709</b>           | <b>100%</b> | <b>79</b>     | <b>100%</b> | <b>11</b>   | <b>100%</b> | <b>0</b>            | <b>0%</b> | <b>17</b>                    | <b>100%</b> | <b>9</b>                      | <b>100%</b> |               |   | <b>841</b> | <b>100%</b> |
|   | <sup>1</sup> Includes medical infirmary services |                      |             |                      |             |               |             |             |             |                     |           |                              |             |                               |             |               |   |            |             |
|   | <sup>2</sup> Includes nursing infirmary services |                      |             |                      |             |               |             |             |             |                     |           |                              |             |                               |             |               |   |            |             |

|          |                        |                |                |                      |                    |                            |                              |                               |                      |              |
|----------|------------------------|----------------|----------------|----------------------|--------------------|----------------------------|------------------------------|-------------------------------|----------------------|--------------|
| <b>4</b> | <b>Outcome Metrics</b> | <b>Medical</b> | <b>Nursing</b> | <b>Mental Health</b> | <b>Social Work</b> | <b>Dental/Oral Surgery</b> | <b>Specialty Clinic - On</b> | <b>Specialty Clinic - Off</b> | <b>Substance Use</b> | <b>Total</b> |
| 4.1      | Percent completed      | 88%            | 99%            | 68%                  | 100%               |                            | 82%                          | 56%                           |                      | 95%          |

|          |   |          |
|----------|---|----------|
| <b>5</b> | <b>Unscheduled Services</b>                       | <b>N</b> |
| 5.1      | Routine Sick Call Completed                       | 116      |
| 5.2      | Emergency Sick Call Completed <sup>1</sup>        | 12       |
| 5.3      | Injury Evaluations <sup>2</sup>                   | 17       |
| 5.4      | Medical Add-Ons                                   | 14       |
| 5.5      | Number of Patients with Non-Intake Lab Collection | 0        |

<sup>1</sup>Emergency sick calls are documented by each clinical responder. This number does not indicate distinct emergencies.  
<sup>2</sup>Injury evaluations are documented at the encounter level and may contain duplicates. This number does not indicate distinct injuries.

