



**City Canvas Pre-Approved Art Portfolio**

*Ebony Bolt, The Jungle and The City, 2024*

# City Canvas

## Pre-Approved Art

There are more than 300 miles of construction fences, sidewalk sheds, and scaffolding in New York City. While these temporary protective structures are important for pedestrian safety, they are often unappealing components of the urban landscape. City Canvas is a program of the NYC Department of Cultural Affairs (DCLA) which allows the installation of temporary visual art on eligible temporary protective structures. City Canvas both improves the pedestrian experience for NYC residents and visitors across the five boroughs, while providing opportunities for local artists to display their work in prominent locations across the five boroughs.

City Canvas was initiated as a temporary pilot program in 2018 and made permanent in September 2023 through a local law which amended the New York City Charter and Building Code to permit the display of artwork on temporary protective structures (i.e., construction sheds, fences, and scaffolding). When filing an initial application permit for a temporary protective structure, property owners are automatically enrolled in the program and are offered an opt out option. Under the City Canvas program, there are two avenues for property owners to install artwork on temporary protective structures, Site-Specific Artwork and Pre-Approved Artwork.

Pre-Approved Artwork (one example of which is featured in this document) is commissioned directly by DCLA through periodic open calls pursuant to section 2508 of Chapter 67 of the New York City charter. Each commission complies with all expected standards and may be licensed by property owners for a fee to be negotiated with artists. Visit our Licensing and Fee Guidelines online at [nyc.gov/citycanvas](https://nyc.gov/citycanvas)

Each Pre-Approved Artwork includes a suite of three components designed for each type of temporary protective structure: construction sheds, fences, and scaffolding. Each component can be used discretely or in ensembles. All Pre-Approved Artworks are designed to be highly flexible and can adapt to a wide range of construction site contexts and conditions. The mockups presented here are for a 100 foot wide construction site that is nine stories tall. Each component mockup is accompanied by a verbal description written by the artist.

For questions and inquiries email: [citycanvas@culture.nyc.gov](mailto:citycanvas@culture.nyc.gov)

### Step by Step Process

- Select a piece from the Pre-Approved Artwork Portfolio.
- Review the Licensing and Fee Guidelines online at [nyc.gov/citycanvas](https://nyc.gov/citycanvas)
- Email [citycanvas@culture.nyc.gov](mailto:citycanvas@culture.nyc.gov) a request to use selected Pre-Approved Artwork.
- DCLA will liaise a connection with Artist.
- Negotiate and complete a licensing agreement with Artist.
- Artist will provide the art files.
- Prepare a print layout with a fabricator.
- Confirm print layout with Artist.
- Send DCLA final layout and completed license agreement.
- DCLA will review, sign, and send back an approval notice.
- Upload the approval notice to DOB NOW.

### Other Artworks in The Pre-Approved Art Portfolio

Ebony Bolt, *The Jungle and The City*, 2024

Lauren Camara, *Paper Stories*, 2024

Venazir Hannah Martinez, *The Shaping of New York*, 2024

Neko Jiang, *Hidden Forest*, 2024

Denae N. Howard, *Little Titans Run New York*, 2024

Dennis RedMoon Darkeem, *Travelers*, 2024

Bayeté Ross Smith, *Our Kind Of People and Mirrors*, 2024

Nikki Scioscia, *Plant Walk*, 2024

Zazu Swistel, *The Urbanite's Clinic For Decadence and Decay*, 2024

Annette Weintraub, *The Myrtle Walks*, 2024



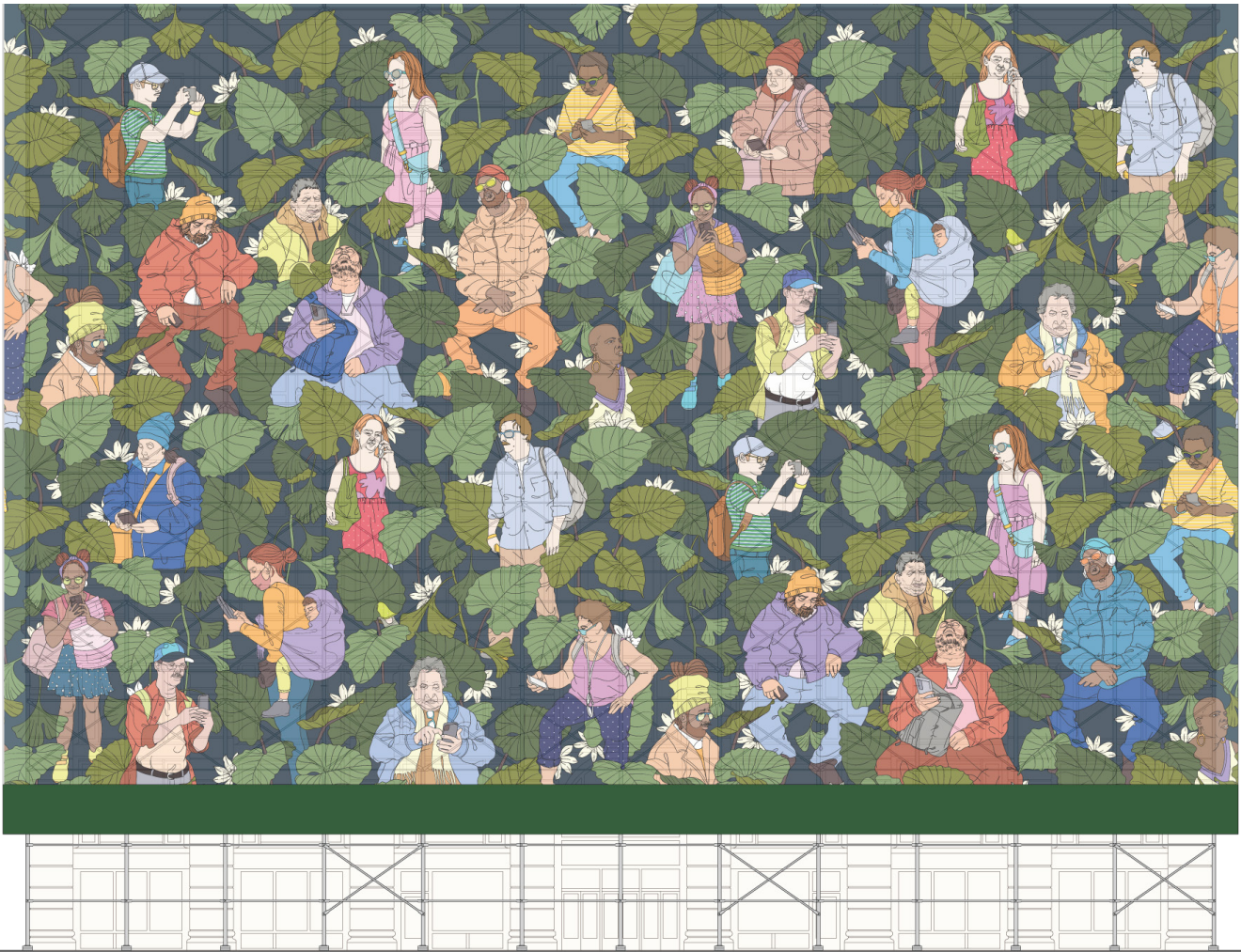
## Ebony Bolt, *The Jungle and The City*, 2024

### Artist Statement

Growing up in New York, I have noticed a grittiness to the city that sometimes shows up in the facial expressions of its inhabitants. I explore ideas of what the city would look like if the concrete jungle met an actual botanical resurgence. A recurring theme in my work is the inclusion of sketches of people from my train rides around the boroughs. The compact compositions represent the dense population of the urban metropolis. The diverse characters are often intertwined with textile patterns and plant-like motifs. The following samples include previous work from public art projects, shows and unreleased projects. I create repeating patterned work that can easily be translated on different mediums.

### Project Description

*The Jungle and The City* is a print inspired by New Yorkers and plantlife. It is a repeating pattern that showcases plants like elephant ears that are seen as a symbol of protection and good fortune. The design is filled with warm inviting colors and features people of different ages and ethnic backgrounds. The city is a melting pot of different cultures and people and I love celebrating the diversity in my work.



## Ebony Bolt, *The Jungle and The City*, 2024

### Supported Scaffold / Netting Artwork Description

There is a deep blue background with cream flowers and elephant ear plants with people intertwined in the motifs. There is a black outline that shapes the design. The plant life is filled with different shades of green. There is a man wearing a backpack holding a phone to take a picture. There is a woman wearing a pink sleeveless dress with sunglasses and auburn hair. There is a teenage boy wearing a striped shirt seated playing a game on his phone. There is a woman in a puffer jacket and hat with a crossbody bag looking down to check something on her phone. There is a woman wearing a hot pink dress with a floral motif talking on the phone as she walks. There is a man walking wearing a blue collared shirt and tan pants with a backpack.

### Supported Scaffold / Netting

Scaffold is a temporary elevated platform, including its supporting structure, erected at a construction site to support workers and/or materials and providing aboveground access to the building's exterior. A scaffold may also serve as a frame for installing safety netting. Artwork displayed on supportive scaffolds will be printed directly onto netting and secured using zip ties that loop directly through it. More information is available on the [Department of Building's website](#).



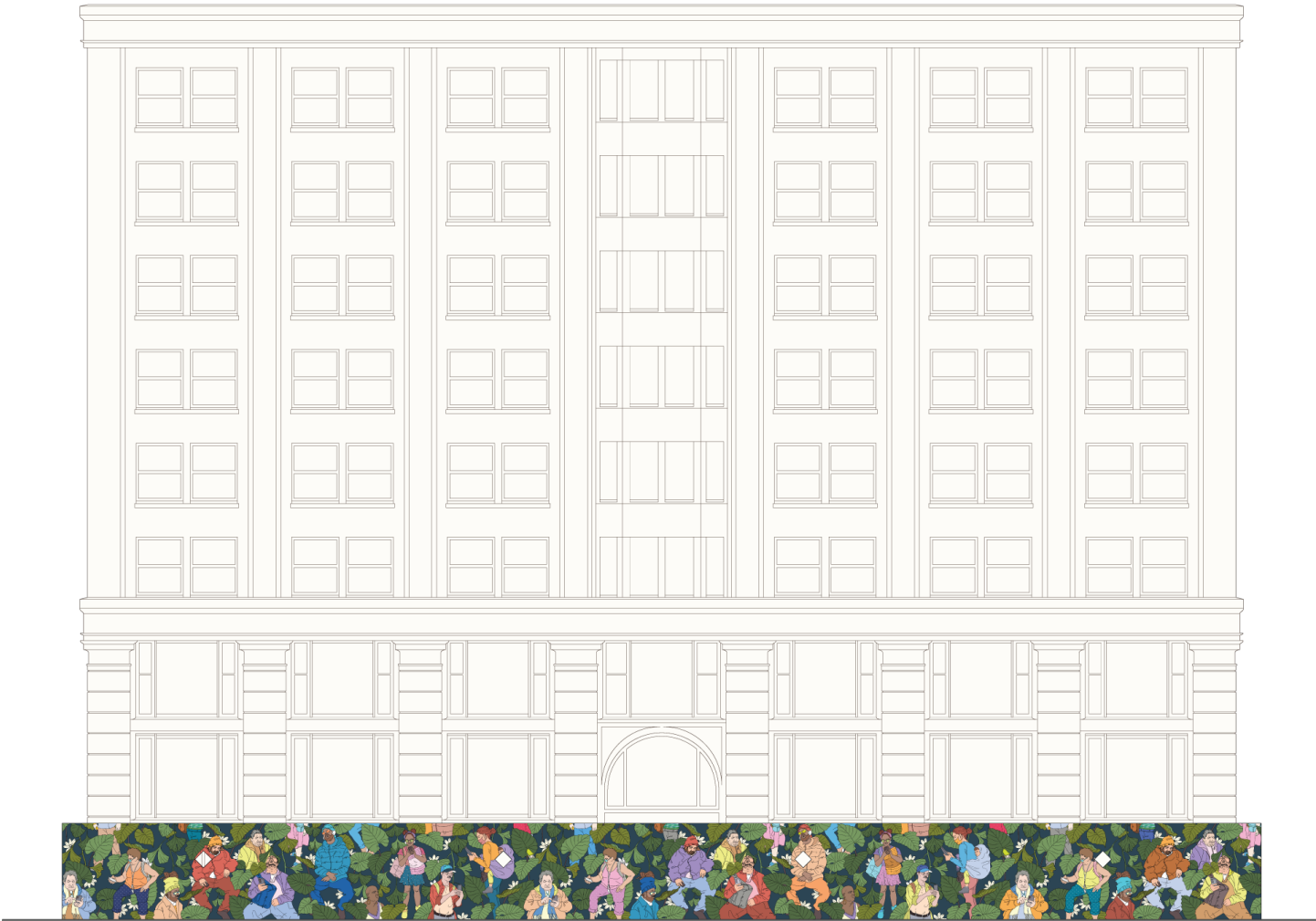
## Ebony Bolt, *The Jungle and The City*, 2024

### Sidewalk Shed Artwork Description

There is a deep blue background with cream flowers and elephant ear plants with people intertwined in the motifs. There is a black outline that shapes the design. The plant life is filled with different shades of green. There is a man wearing a backpack holding a phone to take a picture. There is a woman wearing a pink sleeveless dress with sunglasses and auburn hair. There is a teenage boy wearing a striped shirt seated playing a game on his phone. There is a woman in a puffer jacket and hat with a crossbody bag looking down to check something on her phone. There is a woman wearing a hot pink dress with a floral motif talking on the phone as she walks. There is a man walking wearing a blue collared shirt and tan pants with a backpack.

### About Sidewalk Sheds

The most common temporary protective structures are sidewalk sheds which are made of wood and must be a minimum of 5 feet wide, 4 feet tall, and provide a minimum of 8 feet clearance. Artwork displayed on a sidewalk shed will be printed on vinyl that will be fastened to the outer sides and ends of sheds either by stretching it over the shed and fastening to the back or by affixing such material to self-adhesive panels that adhere directly to the shed. More information is available on the [Department of Building's website](#).



## Ebony Bolt, *The Jungle and The City*, 2024

### Construction Fence Artwork Description

There is a deep blue background with cream flowers and elephant ear plants with people intertwined in the motifs. There is a black outline that shapes the design. The plant life is filled with different shades of green. There is a man wearing a backpack holding a phone to take a picture. There is a woman wearing a pink sleeveless dress with sunglasses and auburn hair. There is a teenage boy wearing a striped shirt seated playing a game on his phone. There is a woman in a puffer jacket and hat with a crossbody bag looking down to check something on her phone. There is a woman wearing a hot pink dress with a floral motif talking on the phone as she walks. There is a man walking wearing a blue collared shirt and tan pants with a backpack.

### About Construction Fences

Construction fences are at least 8 feet high and may be made of wood, corrugated metal, or chain link materials. Fences made of solid materials include 1 x 1 foot plexi-glass viewing panels every 25 feet and are installed between three and six feet above ground level. Artwork displayed on a construction fence will be printed on vinyl that will be fastened to the outer sides and ends of fence either by stretching it over the fence and fastening to the back or by affixing such material to self-adhesive panels that adhere directly to the surface. Chain link fencing may require the vinyl print to include grommets in order to secure the art using zip-ties. More information is available on the [Department of Building's website](#).

Ebony Bolt, *The Jungle and The City*, 2024



Supported Scaffold / Netting Artwork

Ebony Bolt, *The Jungle and The City*, 2024



Sidewalk Shed Artwork



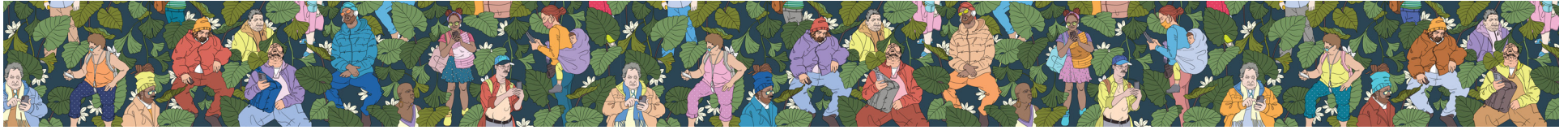
Sidewalk Shed Artwork, detail



Sidewalk Shed Artwork, detail



# Ebony Bolt, *The Jungle and The City*, 2024



Construction Fence Artwork



Construction Fence Artwork, detail



Construction Fence Artwork, detail