



City Canvas Pre-Approved Art Portfolio

Lauren Camara, *Paper Stories*, 2024

City Canvas

Pre-Approved Art

There are more than 300 miles of construction fences, sidewalk sheds, and scaffolding in New York City. While these temporary protective structures are important for pedestrian safety, they are often unappealing components of the urban landscape. City Canvas is a program of the NYC Department of Cultural Affairs (DCLA) which allows the installation of temporary visual art on eligible temporary protective structures. City Canvas both improves the pedestrian experience for NYC residents and visitors across the five boroughs, while providing opportunities for local artists to display their work in prominent locations across the five boroughs.

City Canvas was initiated as a temporary pilot program in 2018 and made permanent in September 2023 through a local law which amended the New York City Charter and Building Code to permit the display of artwork on temporary protective structures (i.e., construction sheds, fences, and scaffolding). When filing an initial application permit for a temporary protective structure, property owners are automatically enrolled in the program and are offered an opt out option. Under the City Canvas program, there are two avenues for property owners to install artwork on temporary protective structures, Site-Specific Artwork and Pre-Approved Artwork.

Pre-Approved Artwork (one example of which is featured in this document) is commissioned directly by DCLA through periodic open calls pursuant to section 2508 of Chapter 67 of the New York City charter. Each commission complies with all expected standards and may be licensed by property owners for a fee to be negotiated with artists. Visit our Licensing and Fee Guidelines online at nyc.gov/citycanvas

Each Pre-Approved Artwork includes a suite of three components designed for each type of temporary protective structure: construction sheds, fences, and scaffolding. Each component can be used discretely or in ensembles. All Pre-Approved Artworks are designed to be highly flexible and can adapt to a wide range of construction site contexts and conditions. The mockups presented here are for a 100 foot wide construction site that is nine stories tall. Each component mockup is accompanied by a verbal description written by the artist.

For questions and inquiries email: citycanvas@culture.nyc.gov

Step by Step Process

- Select a piece from the Pre-Approved Artwork Portfolio.
- Review the Licensing and Fee Guidelines online at nyc.gov/citycanvas
- Email citycanvas@culture.nyc.gov a request to use selected Pre-Approved Artwork.
- DCLA will liaise a connection with Artist.
- Negotiate and complete a licensing agreement with Artist.
- Artist will provide the art files.
- Prepare a print layout with a fabricator.
- Confirm print layout with Artist.
- Send DCLA final layout and completed license agreement.
- DCLA will review, sign, and send back an approval notice.
- Upload the approval notice to DOB NOW.

Other Artworks in The Pre-Approved Art Portfolio

Ebony Bolt, *The Jungle and The City*, 2024

Lauren Camara, *Paper Stories*, 2024

Venazir Hannah Martinez, *The Shaping of New York*, 2024

Neko Jiang, *Hidden Forest*, 2024

Denae N. Howard, *Little Titans Run New York*, 2024

Dennis RedMoon Darkeem, *Travelers*, 2024

Bayeté Ross Smith, *Our Kind Of People and Mirrors*, 2024

Nikki Scioscia, *Plant Walk*, 2024

Zazu Swistel, *The Urbanite's Clinic For Decadence and Decay*, 2024

Annette Weintraub, *The Myrtle Walks*, 2024



Lauren Camara, *Paper Stories*, 2024

Artist Statement

Lauren Camara is a self-taught artist and seasoned graphic designer based in the Bronx. She creates art exclusively with paper, reflecting her passion for blending colors, textures, and patterns to mirror life's contrasts and contradictions. Lauren's artistic journey with paper started when she began repurposing paper swatches received from printing companies, initially provided for selection in graphic design projects. Lauren draws inspiration from the unique stories of people, particularly focusing on members of the New York City community, as well as from her family, social issues, and personal experiences. Her art is born from the spontaneous rhythms of daily life.

Project Description

Lauren Camara's piece consists of meticulously cut paper, layered together to create graphic and colorful portraits. Utilizing a blend of handmade fine paper, premium print paper, wallpaper, scrap paper, and wrapping paper, she weaves together bold colors, intricate patterns, and diverse textures, creating unexpected pairings. While the majority of the portraits feature New York City community members, each person and piece carries its own story and meaning. Chance encounters and intriguing conversations with community members have served as inspiration for many of Lauren's creations. Whether sparked by someone's unique style, an engaging conversation, the movement of a gesture, or the subtleties of an expression, Lauren transforms the everyday into art. These portraits are more than just images—they embody the beauty found in the unexpected. Lauren's art brings her joy, and she hopes it sparks conversations to those who encounter it.



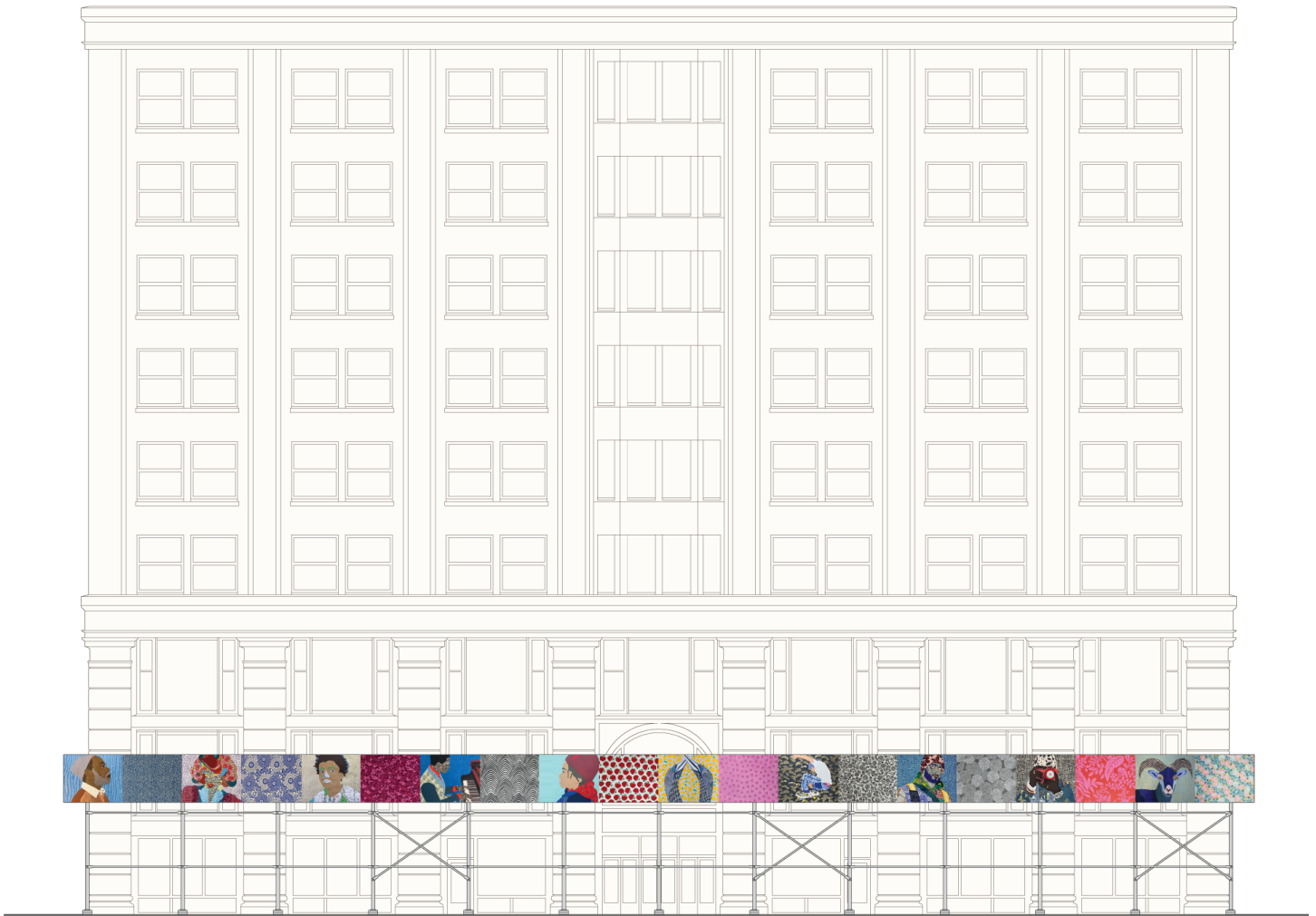
Lauren Camara, *Paper Stories*, 2024

Supported Scaffold / Netting Artwork Description

In this colorful and bold artwork, three-four figures emerge from a vibrant array of multi-colored, multi-patterned, and multi-textured papers, each embodying a unique persona within the Bronx community. Figure one portrays a female photographer capturing photos of residents as they stroll through a Bronx park. With long dreadlocks, dark brown skin, and beaded bracelets adorning her wrists, the photographer exudes warmth and earthiness. Her teal floral-patterned shirt complements the overall color palette. Figure two is a man who is on his daily walk at the Van Cortlandt Park Parade Ground, Bronx. He is a mature man, wearing a Yankees baseball cap, large green floral headphones, and glasses. His skin, a striking pattern of gold and ivory, accentuates his bright blue mustache, eyebrows, and the blue sparkle in his eyes. He is wearing a bright red and magenta floral-patterned shirt and sits against a backdrop of vivid blue. Figure three depicts a serene and strong pregnant woman preparing for her baby shower on a summer day in Van Cortlandt Park, Bronx. With two French braids framing her face, she cradles her pregnant stomach. Crafted from pearlized white paper with a pattern of white birds, her skin exudes natural beauty. Her shirt is made from pastel floral-patterned paper and the piece includes touches of lime green.

Supported Scaffold / Netting

Scaffold is a temporary elevated platform, including its supporting structure, erected at a construction site to support workers and/or materials and providing aboveground access to the building's exterior. A scaffold may also serve as a frame for installing safety netting. Artwork displayed on supportive scaffolds will be printed directly onto netting and secured using zip ties that loop directly through it. More information is available on the [Department of Building's website](#).



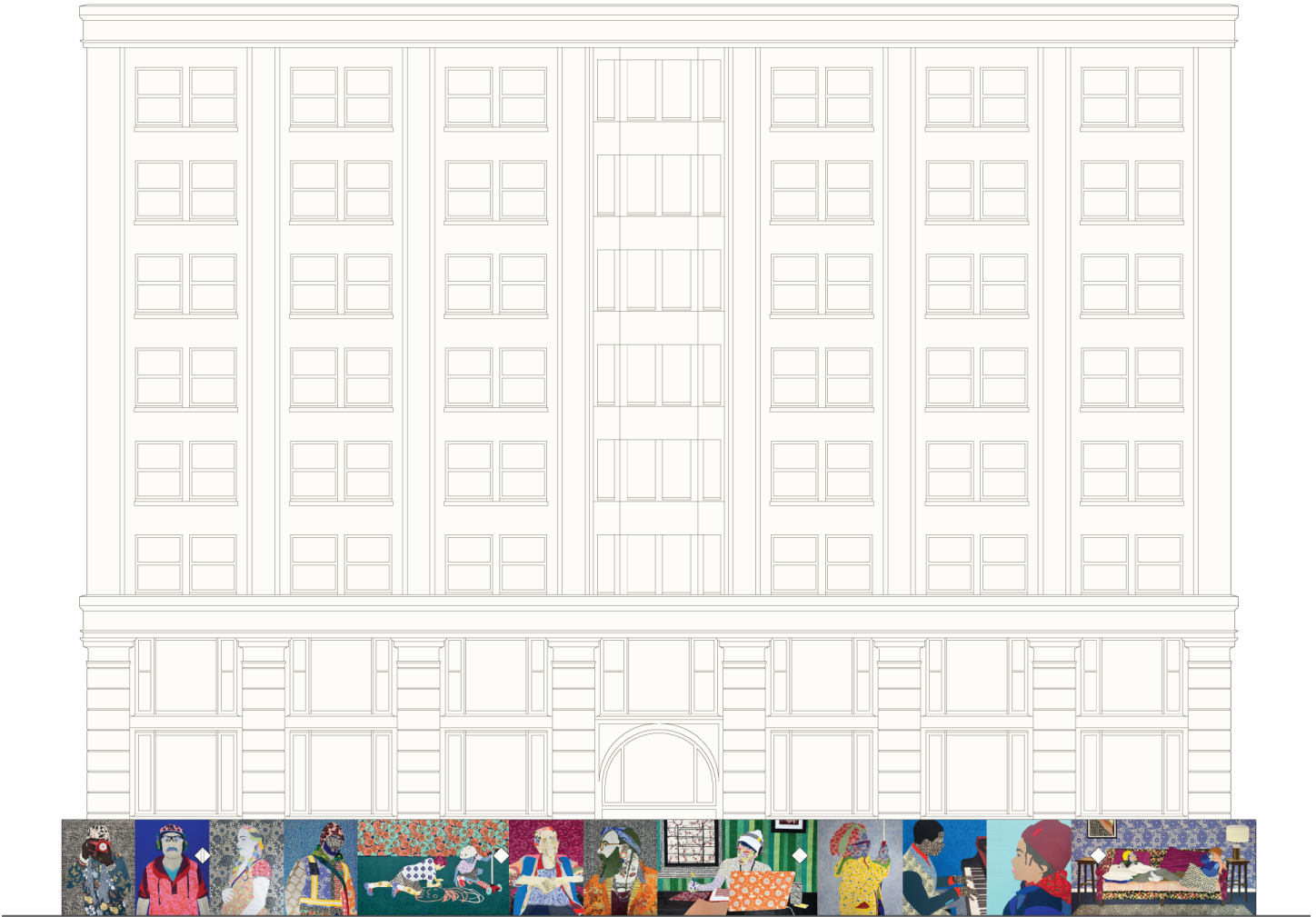
Lauren Camara, *Paper Stories*, 2024

Sidewalk Shed Artwork Description

The sidewalk shed art features a variety of portraits crafted from colorful, patterned papers, showcasing many members of the New York City community. Each portrait is complemented on each side by a different pattern, adding to the overall visual appeal and balance. Among the portraits are a dancer and musician from the Bronx, a high school student doing homework, a pianist, the profile of a young boy, and a little girl with glasses. In the heart of the shed, a piece depicts two Northern Gannets representing love. Each piece of art, meticulously crafted solely from paper, exudes a vibrant and graphic presence, capturing the essence of the diverse subjects and the dynamic energy of the community they represent.

About Sidewalk Sheds

The most common temporary protective structures are sidewalk sheds which are made of wood and must be a minimum of 5 feet wide, 4 feet tall, and provide a minimum of 8 feet clearance. Artwork displayed on a sidewalk shed will be printed on vinyl that will be fastened to the outer sides and ends of sheds either by stretching it over the shed and fastening to the back or by affixing such material to self-adhesive panels that adhere directly to the shed. More information is available on the [Department of Building's website](#).



Lauren Camara, *Paper Stories*, 2024

Construction Fence Artwork Description

The art along the construction fence showcases a diverse array of portraits crafted from vibrant, multi-colored, multi-patterned, and multi-textured papers, featuring many members of the New York City community. Among them are a female photographer capturing moments in a small Bronx park, a mature man walking in Van Cortlandt Park, a pregnant woman protectively cradling her belly, a dedicated NYC Parks Department worker, two children joyfully drawing with chalk on the city sidewalk, an elderly woman living in an assisted living residence, a tattooed man with a central tattoo reading 'compassion,' a high school student immersed in homework, a pianist lost in music, a couple entwined on their couch, and a little girl holding an umbrella at a protest. Each portrait, meticulously cut and layered from paper, exudes a bold and graphic presence, reflecting the vibrancy of the subjects and the community they represent.

About Construction Fences

Construction fences are at least 8 feet high and may be made of wood, corrugated metal, or chain link materials. Fences made of solid materials include 1 x 1 foot plexi-glass viewing panels every 25 feet and are installed between three and six feet above ground level. Artwork displayed on a construction fence will be printed on vinyl that will be fastened to the outer sides and ends of fence either by stretching it over the fence and fastening to the back or by affixing such material to self-adhesive panels that adhere directly to the surface. Chain link fencing may require the vinyl print to include grommets in order to secure the art using zip-ties. More information is available on the [Department of Building's website](#).



Supported Scaffold / Netting Artwork

Lauren Camara, *Paper Stories*, 2024



Construction Fence Artwork



Construction Fence Artwork, detail



Construction Fence Artwork, detail