



**City Canvas Pre-Approved Art Portfolio**

Neko Jiang, *Hidden Forest*, 2024

# City Canvas

## Pre-Approved Art

There are more than 300 miles of construction fences, sidewalk sheds, and scaffolding in New York City. While these temporary protective structures are important for pedestrian safety, they are often unappealing components of the urban landscape. City Canvas is a program of the NYC Department of Cultural Affairs (DCLA) which allows the installation of temporary visual art on eligible temporary protective structures. City Canvas both improves the pedestrian experience for NYC residents and visitors across the five boroughs, while providing opportunities for local artists to display their work in prominent locations across the five boroughs.

City Canvas was initiated as a temporary pilot program in 2018 and made permanent in September 2023 through a local law which amended the New York City Charter and Building Code to permit the display of artwork on temporary protective structures (i.e., construction sheds, fences, and scaffolding). When filing an initial application permit for a temporary protective structure, property owners are automatically enrolled in the program and are offered an opt out option. Under the City Canvas program, there are two avenues for property owners to install artwork on temporary protective structures, Site-Specific Artwork and Pre-Approved Artwork.

Pre-Approved Artwork (one example of which is featured in this document) is commissioned directly by DCLA through periodic open calls pursuant to section 2508 of Chapter 67 of the New York City charter. Each commission complies with all expected standards and may be licensed by property owners for a fee to be negotiated with artists. Visit our Licensing and Fee Guidelines online at [nyc.gov/citycanvas](https://nyc.gov/citycanvas)

Each Pre-Approved Artwork includes a suite of three components designed for each type of temporary protective structure: construction sheds, fences, and scaffolding. Each component can be used discretely or in ensembles. All Pre-Approved Artworks are designed to be highly flexible and can adapt to a wide range of construction site contexts and conditions. The mockups presented here are for a 100 foot wide construction site that is nine stories tall. Each component mockup is accompanied by a verbal description written by the artist.

For questions and inquiries email: [citycanvas@culture.nyc.gov](mailto:citycanvas@culture.nyc.gov)

### Step by Step Process

- Select a piece from the Pre-Approved Artwork Portfolio.
- Review the Licensing and Fee Guidelines online at [nyc.gov/citycanvas](https://nyc.gov/citycanvas)
- Email [citycanvas@culture.nyc.gov](mailto:citycanvas@culture.nyc.gov) a request to use selected Pre-Approved Artwork.
- DCLA will liaise a connection with Artist.
- Negotiate and complete a licensing agreement with Artist.
- Artist will provide the art files.
- Prepare a print layout with a fabricator.
- Confirm print layout with Artist.
- Send DCLA final layout and completed license agreement.
- DCLA will review, sign, and send back an approval notice.
- Upload the approval notice to DOB NOW.

### Other Artworks in The Pre-Approved Art Portfolio

Ebony Bolt, *The Jungle and The City*, 2024

Lauren Camara, *Paper Stories*, 2024

Venazir Hannah Martinez, *The Shaping of New York*, 2024

Neko Jiang, *Hidden Forest*, 2024

Denae N. Howard, *Little Titans Run New York*, 2024

Dennis RedMoon Darkeem, *Travelers*, 2024

Bayeté Ross Smith, *Our Kind Of People and Mirrors*, 2024

Nikki Scioscia, *Plant Walk*, 2024

Zazu Swistel, *The Urbanite's Clinic For Decadence and Decay*, 2024

Annette Weintraub, *The Myrtle Walks*, 2024



## Neko Jiang, *Hidden Forest*, 2024

### Artist Statement

Neko Jiang (Jiedi Jiang) is an illustrator who expresses herself and conveys narratives through visual art. Her artistic journey is a celebration of color, form, and texture. Drawing inspiration from the natural world, societal dynamics, and personal experiences, Neko excels in combining color palettes to weave together whimsical and introspective threads, maintaining a delicate balance to create visual narratives that resonate deeply on a personal level. Most of Neko's work is created digitally using Adobe Photoshop, but she also incorporates textures from traditional media. Through the synthesis of traditional and digital techniques, Neko intertwines threads of fantasy and reality. Neko says, "I hope that through my artwork, viewers will engage in introspection and reflection, confronting their fears, embracing their vulnerabilities, and ultimately discovering inner beauty alongside the characters I create."

### Project Description

Neko Jiang named this project "Hidden Forest" overall. Within the Construction Fence structure, it comprises six frames, each depicting diverse scenes of people passing by or sitting beside subway windows, immersed in a surreal and fantastical world. These scenes may symbolize their aspirations, inner desires, or fleeting imaginations. Drawing inspiration from developed film rolls, Neko sees each person's reflection in the window as a slideshow of their life, a moment of introspection during their daily commute. In the Sidewalk Shade structure, Neko reimagines thematic elements from these scenes for a more vibrant and joyful ambiance. Additionally, she incorporates 1-2 subway window scenes into the Safety Netting structure. Having recently moved from New York to Seattle, Neko finds solace in the tranquility of nature, which she hopes viewers will experience Neko Jiang Writing Part List 2 as they immerse themselves in her artwork, gazing out of the windows and finding respite amidst the hustle and bustle of life.



## Neko Jiang, *Hidden Forest*, 2024

### **Supported Scaffold / Netting Artwork Description**

This artwork was completed by illustrator Neko Jiang in 2024 using Adobe Photoshop. In the bottom right corner of the composition stands a young Asian woman with black hair, dressed in a blue-black sweater. She is turned to the side, with her right hand against a white subway window. Opposite her gaze, within the window's world, is a yellow cheetah with brown spots. Half of its body gracefully protrudes from the segmented window, with its right paw reaching out towards the woman. The cheetah is situated in a tropical jungle, surrounded by various large, philodendron plants. In the upper right corner of the window, another cheetah hides amidst the foliage, quietly observing the outside world. Curved and cascading tropical plants extend from both sides of the window.

### **Supported Scaffold / Netting**

Scaffold is a temporary elevated platform, including its supporting structure, erected at a construction site to support workers and/or materials and providing aboveground access to the building's exterior. A scaffold may also serve as a frame for installing safety netting. Artwork displayed on supportive scaffolds will be printed directly onto netting and secured using zip ties that loop directly through it. More information is available on the [Department of Building's website](#).



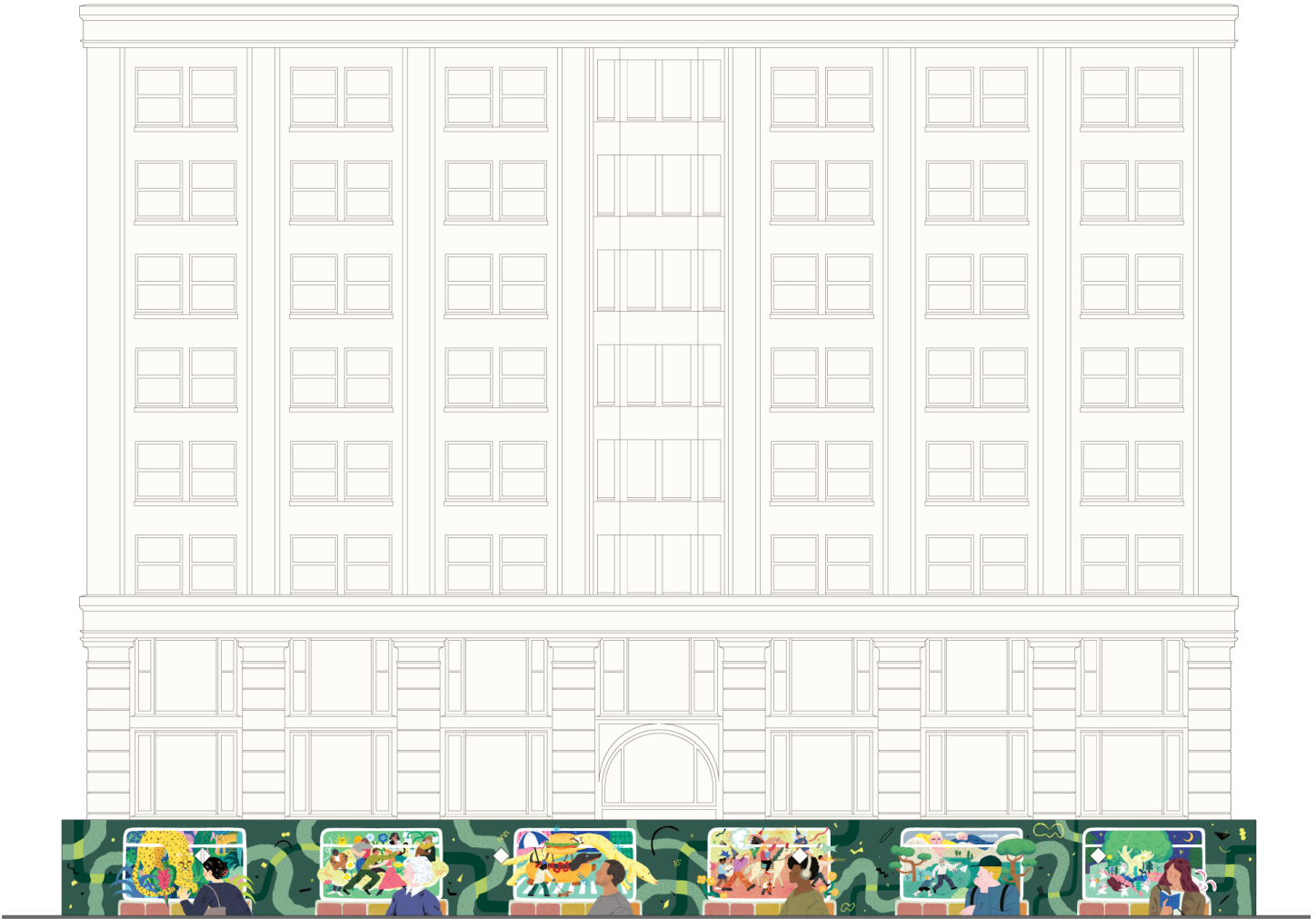
## Neko Jiang, *Hidden Forest*, 2024

### Sidewalk Shed Artwork Description

Illustrator Neko Jiang's 2024 artwork portrays six scenes from left to right. The first scene captures various embraces amidst flower clusters against a warm green and yellow background. Subsequent scenes feature yellow cheetahs surrounded by tropical plants, a grandfather with his grandson releasing a paper airplane towards snowy mountains, a woman walking a dachshund and a giant dachshund with a cow on top, and a Golden Retriever on a green lawn. The fifth scene shows six rabbits dancing and performing music as a girl lies with trees sprouting from her body. The final scene depicts a lively procession led by a woman on a white horse, accompanied by musicians.

### About Sidewalk Sheds

The most common temporary protective structures are sidewalk sheds which are made of wood and must be a minimum of 5 feet wide, 4 feet tall, and provide a minimum of 8 feet clearance. Artwork displayed on a sidewalk shed will be printed on vinyl that will be fastened to the outer sides and ends of sheds either by stretching it over the shed and fastening to the back or by affixing such material to self-adhesive panels that adhere directly to the shed. More information is available on the [Department of Building's website](#).



## Neko Jiang, *Hidden Forest*, 2024

### Construction Fence Artwork Description

Illustrator Neko Jiang's 2024 artwork, "Hidden Forest," showcases six progressive scenes from left to right. Each scene presents characters near a subway window, blending reality and imagination. The main characters are often positioned in the lower right corner of the white rectangular subway windows. The first scene shows a young Asian woman facing sideways with her hand against the window, with a cheetah reaching out to her from the world inside. Tropical foliage surrounds them. The second scene features an elderly white woman looking into the window at embracing people. A ring of circular forms and flowers embellishes the scene. In the third scene, a middle-aged Latino man observes a scene of a lady walking a dachshund, a giant dachshund, and a cow atop it. A long Golden Retriever extends from the window frame. In the fourth scene, a black man with headphones walks past; the window shows a parade with various characters playing musical instruments, led by a woman on horseback. The fifth scene depicts a young man gazing inside, observing a grandfather and grandson flying paper airplanes towards distant hills. The sixth scene shows a woman reading beside a window, with a nighttime scene inside featuring a girl with trees growing from her body, surrounded by rabbits playing instruments and dancing.

### About Construction Fences

Construction fences are at least 8 feet high and may be made of wood, corrugated metal, or chain link materials. Fences made of solid materials include 1 x 1 foot plexi-glass viewing panels every 25 feet and are installed between three and six feet above ground level. Artwork displayed on a construction fence will be printed on vinyl that will be fastened to the outer sides and ends of fence either by stretching it over the fence and fastening to the back or by affixing such material to self-adhesive panels that adhere directly to the surface. Chain link fencing may require the vinyl print to include grommets in order to secure the art using zip-ties. More information is available on the [Department of Building's website](#).



Supported Scaffold / Netting Artwork

Neko Jiang, *Hidden Forest*, 2024



Sidewalk Shed Artwork



Sidewalk Shed Artwork, detail



Sidewalk Shed Artwork, detail



Neko Jiang, *Hidden Forest*, 2024



Construction Fence Artwork



Construction Fence Artwork, detail



Construction Fence Artwork, detail