

This guide is also available in audio format and in the languages below.

ARABIC

للحصول على نسخة من هذا الدليل باللغة الانجليزية اتصل بـ 311 (معرفي السمع: 212-504-4115) أو قم بزيارة NYC.gov/readyny

BENGALI

এই সহায়িকার একটি বাংলা প্রতিলিপি পেতে হলে, 311 (TTY: 212-504-4115) নম্বরে ফোন করুন অথবা NYC.gov/readyny দেখুন।

CHINESE

如欲索取中文版的指南，請致電311 (TTY: 212-504-4115) 或訪問NYC.gov/readyny。

ENGLISH

Call 311 or visit NYC.gov/readyny for copies of this guide in English.

FRENCH

Pour obtenir une copie en français de ce guide, appelez le 311 (TTY: 212-504-4115) ou visitez le site NYC.gov/readyny.

HAITIAN CREOLE

Pou jwenn yon kopi gid sa a nan lang Kreyòl Ayisyen, rele 311 (TTY: 212-504-4115) oswa ale nan sitwèb NYC.gov/readyny.

ITALIAN

Per ottenere una copia di questa guida in italiano, telefonare al numero 311 (TTY: 212-504-4115) o visitare il sito NYC.gov/readyny.

KOREAN

본 안내서의 한국어 사본을 받으시려면, 311 (TTY: 212-504-4115)로 전화하시거나 NYC.gov/readyny를 방문하십시오.

POLISH

W celu otrzymania polskiej kopii niniejszego przewodnika, należy zadzwonić pod nr 311 (nr dla osób z upośledzeniem słuchu: 212-504-4115) lub zajrzeć na stronę internetową NYC.gov/readyny.

RUSSIAN

Для того чтобы получить данную брошюру на русском языке, позвоните по телефону 311 (TTY: 212-504-4115) или посетите веб-сайт NYC.gov/readyny.

SPANISH

Llame al 311 (TTY: 212-504-4115) o visite NYC.gov/readyny para obtener acceso a este folleto en español.

URDU

اس ہدایت نامے کی انگریزی کاپی حاصل کریں، 311 (TTY: 212-504-4115) پر کال کریں یا NYC.gov/readyny دیکھیں۔

YIDDISH

צו ערהאלטן א אידישע קאפיע פון דעם וועגווייזער, רופט 311 (TTY: 212-504-4115) אדער באזוכט NYC.gov/readyny.

NEW YORK CITY

HURRICANE EVACUATION ZONE MAP



KNOW YOUR ZONE

Coastal storms, including nor'easters, tropical storms and hurricanes, can and do affect New York City.

It's important New Yorkers take the time to prepare.

All residents should have a plan in the event they need to evacuate or ride out the storm at home.

Areas of the city that are at risk from storm surge flooding are divided into six evacuation zones (1 through 6) based on how likely they would be to evacuate. Make sure that knowing your evacuation zone is part of your plan.

- If you live in one of the City's hurricane evacuation zones, you may be ordered to evacuate if a hurricane threatens New York City. Have a plan for where you will go if an evacuation order is issued for your area.
- The City may order residents to evacuate depending on the hurricane's track and forecasted storm surge.
- Determine whether you live in an evacuation zone by using the Hurricane Evacuation Zone Finder at **NYC.GOV/KNOWYOURZONE**, calling **311 (212-639-9675 for Video Relay Service, or TTY: 212-504-4115)**, or consulting the enclosed map.

SIGN UP FOR NOTIFY NYC TO RECEIVE EMERGENCY NOTIFICATIONS AND UPDATES VIA EMAIL, PHONE, SMS/TEXT, OR TWITTER.

- Messages are available in English, Arabic, Bengali, Chinese, French, Haitian Creole, Italian, Korean, Polish, Russian, Spanish, Urdu, Yiddish and in American Sign Language (ASL).
- Download the free mobile app.
- Visit **NYC.GOV/NOTIFYNYC**, call **311**, or follow **@NotifyNYC** on Twitter.

TERMS YOU SHOULD KNOW

Atlantic

Hurricane Season

June 1 to November 30.

The greatest potential for hurricanes in New York City is from August through October.

Evacuation Zones

The City will determine which of the six hurricane evacuation zones should be evacuated based on the characteristics of an actual storm as it is approaching the City.

Flood Zones

Flood zones are used to set flood insurance rates and building regulations. Residents should not use flood zones to determine the need to evacuate during coastal storms.

Hurricane

An organized, rotating, low-pressure weather system of clouds and thunderstorms that develops in the tropics

with sustained winds of 74 mph or greater.

Hurricanes are classified as category 1 through 5 according to the hurricane's sustained wind speed. As the wind speed and intensity of a storm increases, the category number increases.

Hurricane Watch

An announcement that hurricane conditions are possible within a specified area.

Watches are issued 48 hours before tropical-storm-force winds are predicted to occur.

Hurricane Warning

An announcement that hurricane conditions are expected within a specified area.

The warning is issued 36 hours before tropical-storm-force winds are predicted to occur and can remain in effect when dangerously high water and waves continue.



IF YOU MUST EVACUATE

IF YOU LIVE WITHIN AN EVACUATION ZONE AND THE CITY ISSUES AN EVACUATION ORDER FOR YOUR AREA, EVACUATE AS DIRECTED

The City will give specific instructions about which areas of the city should evacuate. If a mandatory evacuation is issued for your area, evacuate as directed. Use public transportation if possible, keeping in mind that public transportation may shut down hours before the storm.

For additional information about how to evacuate, including accessible transportation options, **please contact 311 (212-639-9675 for Video Relay Service, or TTY: 212-504-4115).**

KNOW WHERE YOU WILL GO

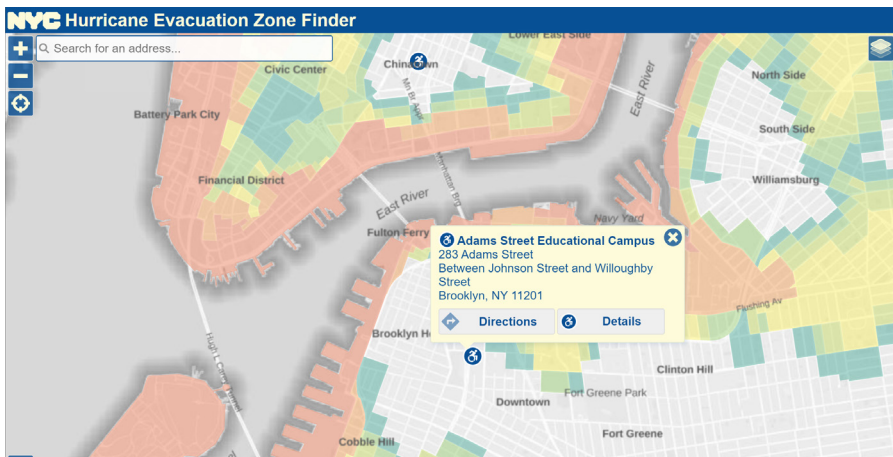
The City strongly recommends evacuees stay with friends and family who live outside of the evacuation zones. For those who have no other shelter options, the City will open evacuation centers throughout the five boroughs.

Plan now for everybody's needs, including older adults, people with disabilities, access and functional needs, children, non-English speakers, and pets and service animals. Know your zone and practice your plan with all household members.

IF YOU ARE GOING TO AN EVACUATION CENTER, PACK LIGHTLY AND BRING

- A Go Bag for each member of the family (a full list of items can be found in the Ready NY My Emergency Plan).
- At least a week's supply of any medication (if possible).
- Medical supplies, or medical equipment you use regularly.
- Sleeping bag for each person.
- All evacuees will be accepted at any evacuation center. Evacuees will not be asked about their immigration status.

KNOW YOUR ZONE



Visit the Hurricane Evacuation Zone Finder at <https://maps.nyc.gov/hurricane/> or call 311 (212-639-9675 for Video Relay Service, or TTY: 212-504-4115) to find out which hurricane evacuation zone you live in.

IF YOU ARE NOT ORDERED TO EVACUATE

If you do not live in one of the six evacuation zones listed on this map, you may still be at risk from wind and rain.

BE PREPARED TO LOSE POWER

Make sure you have all recommended items in your emergency supply kit in case you lose power or other basic services.

SHELTER IN PLACE

If you do not need to evacuate, shelter in place and make use of your emergency supply kit. Stay away from windows.

IF A STORM APPROACHES

All residents should take the following steps to be prepared:

- Bring inside loose, lightweight objects, such as lawn furniture and garbage cans.
- Anchor objects that are unsafe to bring inside, such as gas grills or propane tanks.
- Close windows and outside doors securely.
- Move valuable items from basements to upper floors. (Basements are vulnerable to flooding.)
- Charge cell phone batteries.
- Top off your vehicle and generator with fuel.
- Consider moving your vehicle to higher ground if you live in an evacuation zone.
- Turn your refrigerator and freezer to a colder setting. If you lose power, items that need refrigeration will stay cooler longer.
- Fill your bathtub and other large containers with water — you may lose water service if the power goes out.
- Don't wait until the last minute to refill prescription medications.
- Take out extra cash, including small bills.

HAVE THE RIGHT INSURANCE

Whether you rent or own your home, flood and wind damage are not covered by basic policies.

- For more information about flood insurance visit:
<https://www.floodsmart.gov>
- For more information about flood zones visit:
[NYC.GOV/FLOODMAPS](https://www.nyc.gov/floodmaps) or www.floodhelpny.org

HOMEOWNERS

Most homeowner's insurances do not cover flood damage.

- Homeowners need to buy a separate policy to protect their home in the case of flooding.
- Flood Insurance is required for some homeowners.

RENTERS

It's likely your landlord has flood insurance that covers the building, but not the contents of a renter's apartment.

- The National Flood Insurance Program offers contents-only flood insurance to help renters protect the items inside of their apartment.

FOR PEOPLE WITH DISABILITIES, ACCESS, OR FUNCTIONAL NEEDS

Make sure your plan addresses how your needs may affect your ability to evacuate, use elevators in your building, shelter in place, or communicate with emergency workers.

- Use your emergency support network to arrange for help from family, friends, building staff, or service providers if you will need assistance.
- If you are unable to evacuate on your own ahead of a storm, **call or text 311 for assistance.**
- If you depend on power for life-sustaining equipment, plan to evacuate. Ask your utility company if your medical equipment qualifies you to be listed as a life-sustaining equipment customer.
- Allow additional travel time and consider your transportation, dietary, and medical needs.
- Bring all medications with you and have contact information for your health providers written down. Evacuation centers include accessible facilities and accommodations for people with disabilities, access and functional needs. For information about accessibility features of a particular facility, consult the Hurricane Evacuation Zone finder at **[NYC.GOV/KNOWYOURZONE](https://www.nyc.gov/knowyourzone) or contact 311.**

KNOW THE HAZARDS

STORM SURGE FLOODING

Storm surge is a dome of ocean water that is pushed ashore by the strength of the oncoming hurricane's winds.

- Storm surge accounts for the largest number of hurricane fatalities.
- A major hurricane could push more than 30 feet of storm surge (the height of a three-story building) onto the coastline of New York City and flooding from storm surge can travel several miles inland.
- Storm surge flooding and large battering waves can endanger lives, destroy buildings, erode beaches and dunes, and damage roads and bridges.

RAIN

Heavy rain from hurricanes can cause flash flooding. Low-lying and poor drainage areas are especially vulnerable to flooding.

WIND

With sustained winds of 74 mph or greater, hurricanes may damage buildings, topple trees, and turn loose objects into deadly projectiles.

BASEMENT APARTMENTS

- Basement residents may face additional risks from hurricanes even if they live outside of evacuation zones. Many areas of the City can experience significant rainfall flooding during a hurricane, which can pose significant danger to people in basement apartments.
- If you live in a basement apartment, heed all storm warnings, and make sure your emergency plan includes how you would take shelter above ground.
- If you live in a basement in an evacuation zone, heed all storm warnings and evacuation orders.

HIGH-RISE BUILDINGS

- Residents of high-rise apartment buildings may face additional risks from hurricanes even if they live outside of evacuation zones.
- If you live in a high-rise building, make sure your windows are closed, and stay away from windows in case they break or shatter.
- If you live in a high-rise building located in an evacuation zone, heed all storm warnings and evacuation orders.

NEW YORK CITY HURRICANE EVACUATION ZONES

NYC EVACUATION CENTERS: FIND YOUR CLOSEST CENTER ON THE MAP

BRONX

- PS 15 / INST FOR ENV LEARNING
2195 ANDREWS AVE.
- PS 132 GARRET A. MORGAN
1245 WASHINGTON AVE.
- PS 102 JOSEPH O. LORETAN
1827 ARCHER ST.
- MS / HS 141 RIVERDALE / KINGSBRIDGE ACADEMY
660 W 237TH ST.
- PS / IS 218 HERNANDEZ DUAL LANGUAGE MAGNET
1220 GERARD AVE.
- MORRIS HEIGHTS EDUCATIONAL COMPLEX
1780 DR. MARTIN LUTHER KING JR. BLVD
- OLD IS 158
800 HOME ST.
- PS 211
1919 PROSPECT AVE.
- OLD IS / HS 362
921 E 226TH ST.
- OLD WALTON HS
2780 RESERVOIR AVE.
- BRONX SCHOOL FOR LAW, GOVT & JUSTICE
244 E 163RD ST.
- JANE ADDAMS HS
900 TINTON AVE.

MANHATTAN

- PS 8 LUIS BELLARD
465 W 167TH ST.
- GLOBAL LEARNING COLLABORATIVE
145 W 84TH ST.
- P.S./I.S. 210 21ST CENTURY ACADEMY
501-503 W 152ND ST.
- PS 92 / MARY MCLEOD BETHUNE
222 W 134TH ST.
- MIDTOWN EAST CAMPUS
233 E. 56TH ST.
- G. WASHINGTON HS EDUCATIONAL CAMPUS
549 AUDUBON AVE.
- JACQUELINE KENNEDY ONASSIS HS
120 W 46TH ST.
- WEST END SECONDARY SCHOOL
227-243 W 61ST ST.
- MS 131
100 HESTER ST.
- OLD IS 88
215 W 114TH ST.

QUEENS

- AVIATION CTE HS
45-30 36TH ST.
- JHS 185 EDWARD BLEEKER
147-26 25TH DR.
- PS 307 PIONEER ACADEMY
40-20 100TH ST.
- JHS 190 RUSSELL SAGE
68-17 AUSTIN ST.
- IS 25 ADRIEN BLOCK
34-65 192ND ST.
- PS 58 SCHOOL OF HEROES
72-24 GRAND AVE.
- FRANK SINATRA HS
35-12 35TH AVE.
- PS 100 GLEN MORRIS
111-11 118TH ST.
- QUEENS HS OF TEACHING
74-20 COMMONWEALTH BLVD.
- GROVER CLEVELAND HS
21-27 HIMROD ST.
- PS 149 CHRISTA McAULIFFE
93-11 134TH AVE.
- JHS 74 NATHANIEL HAWTHORNE
61-15 OCEANIA ST.
- TOWNSEND HARRIS HS
149-11 MELBOURNE AVE.
- PS 239
17-15 WEIRFIELD ST.
- HILLCREST HS
160-05 HIGHLAND AVE.
- PS / IS 268
92-07 175TH ST.

BROOKLYN

- ADAMS STREET EDUCATIONAL CAMPUS
283 ADAMS ST.
- IS 30 MARY WHITE OVINGTON
7002 4TH AVE.
- JOHN JAY EDUCATIONAL CAMPUS
237 7TH AVE.
- MEDGAR EVERS COLLEGE PREP
1186 CARROLL ST.
- MS 2 PARKSIDE PREP
655 PARKSIDE AVE.
- PS 289 GEORGE V. BROWER
900 ST. MARKS AVE.
- IS 383 PHILIPPA SCHUYLER
1300 GREENE AVE.
- PS 226 ALFRED DE B. MASON
6006 23RD AVE.
- PS 130 THE PARKSIDE ANNEX
713 CATON AVE.
- WILLIAM MCKINLEY
7305 FT HAMILTON PKWY.
- PS 12 PECKS-DAVIS
430 HOWARD AVE.
- PS 7 ABRAHAM LINCOLN
858 JAMAICA AVE.
- OLD IS 324
800 GATES AVE.
- OLD IS 55
2021 BERGEN ST.
- PS 24
427 38TH ST.
- PS 321 WILLIAM PENN
180 7TH AVE.
- PS 26 JESSE OWENS
1014 LAFAYETTE AVE.

STATEN ISLAND

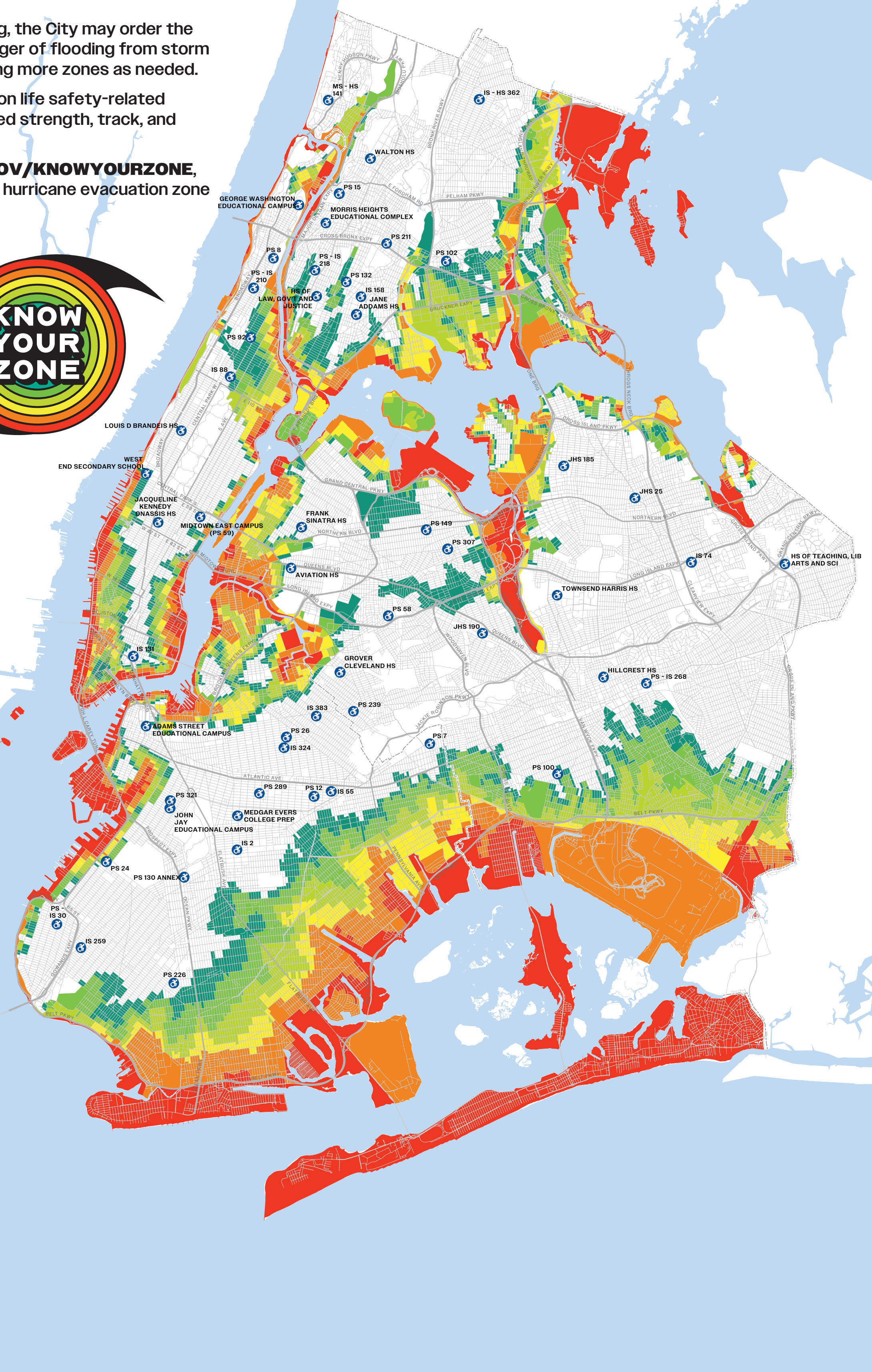
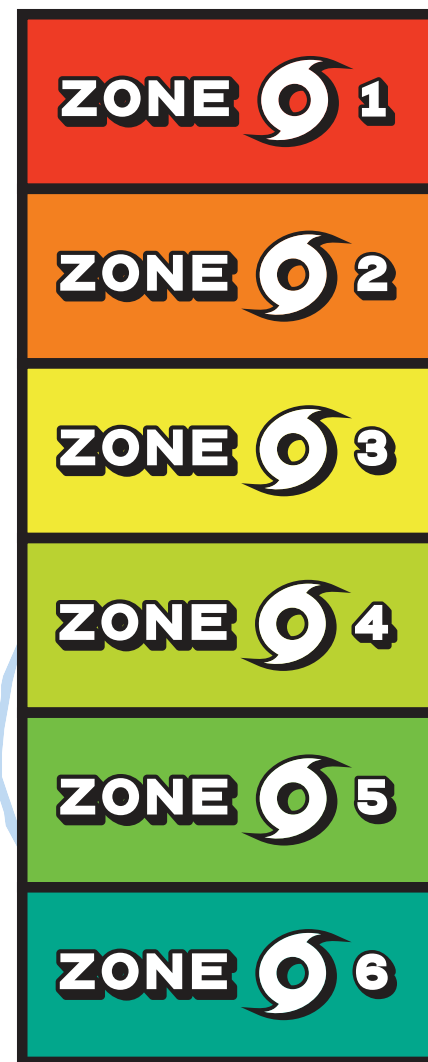
- PS 55 HENRY M. BOEHM
54 OSBORNE ST.
- IS 51 EDWIN MARKHAM
20 HOUSTON ST.
- CURTIS H.S.
105 HAMILTON AVE.
- JEROME PARKER CAMPUS
100 ESSEX DR.
- MICHAEL J. PETRIDES
715 OCEAN TERRACE

HURRICANE EVACUATION ZONES

When a coastal storm is approaching, the City may order the evacuation of neighborhoods in danger of flooding from storm surge, starting with Zone 1 and adding more zones as needed.

Zones will be evacuated depending on life safety-related threats from a hurricane's forecasted strength, track, and storm surge.

Use the enclosed map, visit NYC.GOV/KNOWYOURZONE, or call 311 to find out if you live in a hurricane evacuation zone



♿ Accessible evacuation centers