

FLUSHING WEST

*4th Stakeholders Meeting
Wednesday, February 3rd, 2016*



AGENDA

- Department of City Planning Presentation (DCP) on Flushing West Community Resources
- Department of Housing, Preservation & Development (HPD) Presentation on the Draft Affordable Housing Strategies
- Department of Small Business Services (SBS) Presentation on the Draft Economic & Workforce Development Strategies
- Q & A



Image: NYC DCP

- Facilitate a **community-based planning process** to support policy changes that will shape a more livable neighborhood
- **Encourage new housing** with a required affordable component, and preserve existing affordable housing.
- **Encourage walkability** by extending the vibrant downtown area to the waterfront, and create opportunities for **new open space**
- Support the existing and growing immigrant and small business culture by **providing economic opportunities**
- Align investments in **infrastructure and services** to support current demands and future growth

Builds upon a long history of previous planning work in Downtown Flushing




Create a Comprehensive Neighborhood Plan to improve quality of life and diversity that:

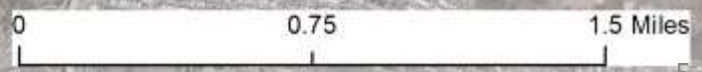
- **Identifies community resources & key capital projects that can contribute to achieving a more livable neighborhood**
- **Includes an affordable housing component which will incorporate mandatory affordable housing and preservation strategies**
- **Includes an economic development component to support current small business and workforce needs & future growth**

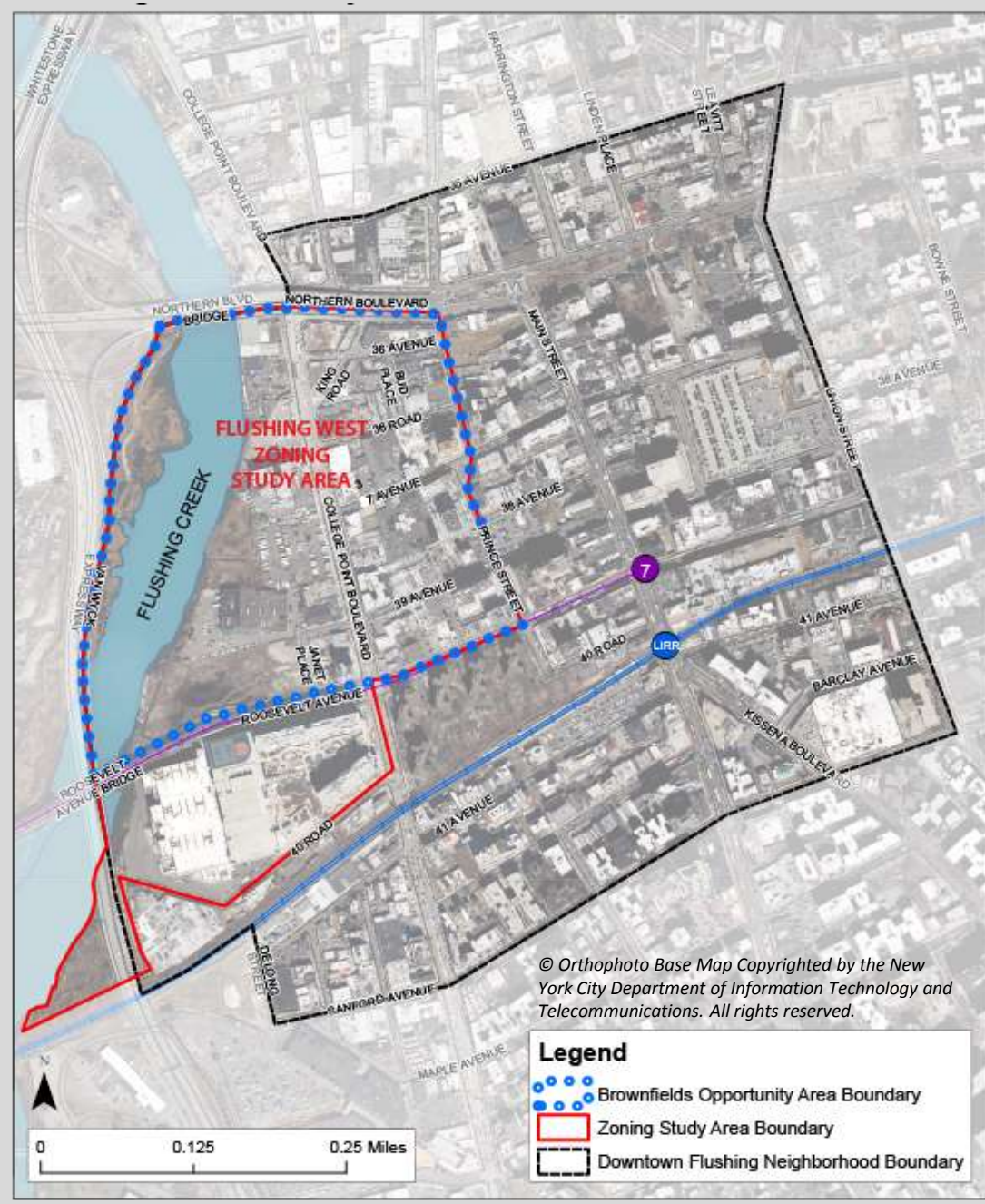


© Orthophoto Base Map Copyrighted by the New York City Department of Information Technology and Telecommunications. All rights reserved.

Legend

-  Brownfields Opportunity Area Boundary
-  Zoning Study Area Boundary
-  Downtown Flushing Neighborhood Boundary

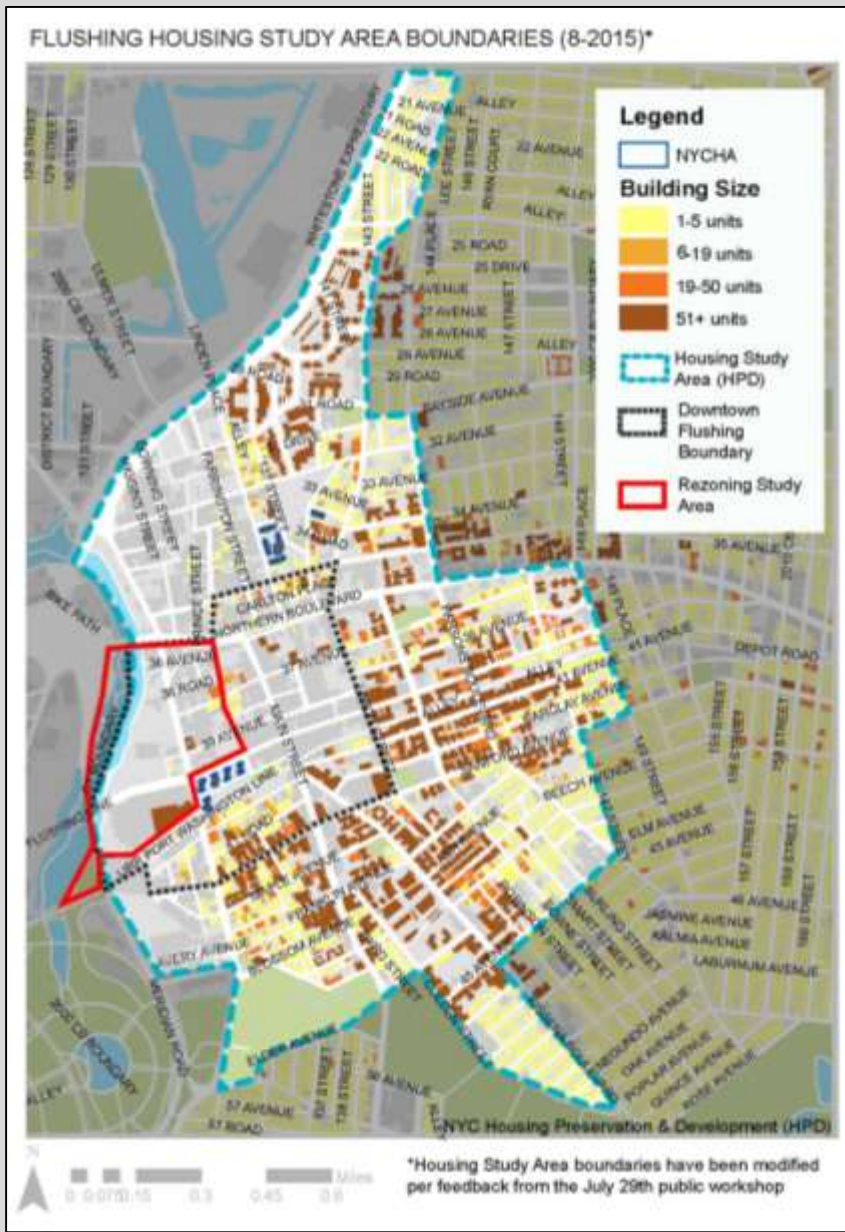




© Orthophoto Base Map Copyrighted by the New York City Department of Information Technology and Telecommunications. All rights reserved.

Legend

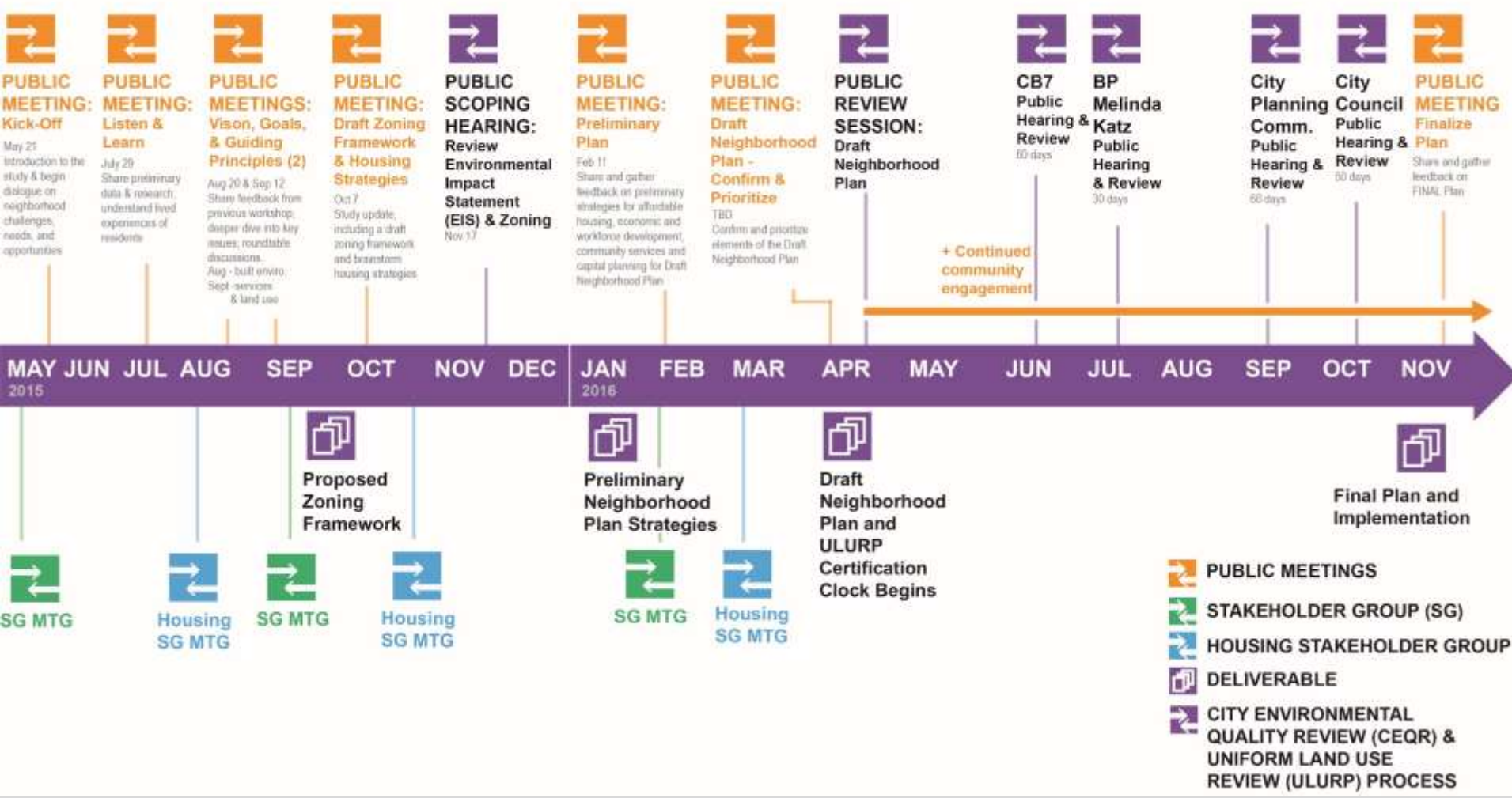
- Brownfields Opportunity Area Boundary
- Zoning Study Area Boundary
- Downtown Flushing Neighborhood Boundary



- Zoning Study Area
- Neighborhood Area
- Housing Area

FLUSHING WEST PLANNING PROCESS OVERVIEW (02-03-2016)*

*Timeline is tentative and subject to change



COMMUNITY RESOURCES

- Improve outreach to immigrant communities and availability of language services
- Provide community services and facilities such as senior centers, daycare centers and health clinics
- Expand supply of school seats and after-school programs
- Prevent displacement of existing small business by newer big-box chain stores

PARKS AND OPEN SPACE

- More passive and active open spaces needed for outdoor activities
- Provide safer and more enjoyable access to existing open spaces , particularly to Flushing Meadows-Corona Park
- Improve quality of existing open spaces

PUBLIC REALM

- Streetscape improvements to enhance and support walkability
- Encourage strong retail corridors; reduce littering
- Improve water quality and reduce smell
- Create a publically accessible recreation destination along the waterfront

TRANSPORTATION

- Pedestrian safety improvements at key crossings
- Improve station accessibility for the 7 train
- Transit center needed to direct bus layovers away from downtown area
- Improve bus circulation to reduce traffic congestion
- Need separated bike lanes, connections, and racks

Parks and Open Space

1 Flushing Meadows Corona Park - Northwest Edge



2 Flushing Meadows Corona Park Pool



3 AI Deeter Recreation Center



4 Soccer Fields 8 and 9 at AI Deeter Recreation Center



5 Five Soccer Fields in Flushing Meadows Corona Park



6 Maple Playground



7 Margaret I. Carman Green (Weeping Beach Park)



8 Bland Playground



9 Bowne Playground (jointly operated with P.S. 201)



10 Lewis Latimer Historic House and Museum



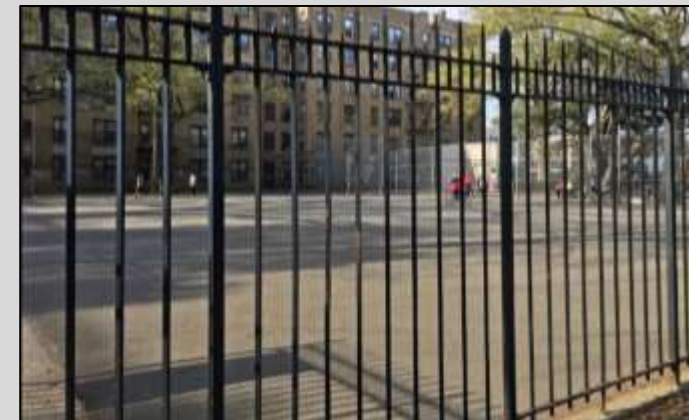
11 Northern Blvd. / Daniel Carter Beard Mall



Bland Playground



Margaret I. Carman Green playfield





NYC Department of Environmental Protection



What is a right-of-way bioswale?

A right-of-way bioswale describes planted areas in the sidewalks that are designed to collect and manage stormwater. Stormwater flows down the street gutter along the curb, into the bioswale, is absorbed by the sandy soil on the top and stone layer at the bottom, and seeps into the ground underneath in a process called "infiltration." Water that is absorbed by the trees and plants or remains on the surface of the bioswale is then released into the air as water vapor. If the bioswale reaches capacity, the water will overflow at the outlet and back into the catch basin.



Past Projects

Flushing Bay CSO Retention Facility (2009)

The Flushing CSO Facility collects 43 million gallons of combined sewage from central Queens. The collected combined sewage is held until the end of the storm and then pumped to the Tallman Island Waste Water Treatment Plant where it is treated.

Future Projects

Green infrastructure bioswales

Two green infrastructure bioswales contracts are currently underway: (1) south of 39th Avenue on Prince Street and College Point Boulevard and (2) College Point Boulevard between 36th Road and 39th Avenue. The project is currently in the preliminary design phase.

Flushing Dredging

DEP, with the Army Corps of Engineers, is planning for ecological restoration within Flushing Creek, which will likely include marsh and wetland restoration, environmental dredging, shoreline bank stabilization, site cleanup and debris removal. Design would follow completion of the draft feasibility and environmental assessment.

Flushing Creek Long-Term Control Plan

One component of the plan includes disinfection for the CSO Outfalls at 32nd Avenue and 40th Road. DEP is currently finalizing responses to DEC comments regarding the disinfection alternatives.

What is a combined sewer overflow (CSO)?

A combined sewer collects both sewage and surface runoff in a single pipe system. Stormwater, during heavy rain and snow storms, combined sewers receive higher than normal flows. Treatment plants are unable to handle flows that are more than twice design capacity and when this occurs, a mix of excess stormwater and untreated wastewater is discharged directly into the City's waterways at certain outfalls. This is called a combined sewer overflow (CSO).

Flushing Bay and Creek Restoration Activities



© Orthophoto Base Map Copyrighted by the New York City Department of Information Technology and Telecommunications. All rights reserved.



Marginal Street



Flushing Creek Shoreline





NYC Department of Transportation

About NYC DOT

DOT's mission is to provide for the safe, efficient, and environmentally responsible movement of people and goods in the City of New York and to maintain and enhance the transportation infrastructure crucial to the economic vitality and quality of life of our primary customers, City residents.

- Provide safe, efficient, and environmentally responsible movement of pedestrians, goods, and vehicular traffic on the streets, highways, bridges, and waterways of the City's transportation network;
- Improve traffic mobility and reduce congestion throughout the City;
- Rehabilitate and maintain the City's infrastructure, including bridges, tunnels, streets, sidewalks, and highways;
- Encourage the use of mass transit and sustainable modes of transportation; and
- Conduct traffic safety educational programs.

Current Projects

1. *Flushing to Jamaica Select Bus Service*

Select Bus Service uses techniques and technologies such as dedicated bus lanes, off-board fare collection and transit signal priority to improve transit connections.

2. *Roosevelt Avenue Bridge Rehabilitation, including bicycle and pedestrian access*

The bridge is in need of repair of steel and concrete structural components. The city also plans widen the sidewalks from 8 to 10 feet and establish bike lanes within them. The four-year project is expected to begin in the fall.

3. *Main Street Sidewalk Widening in select locations*

Widening the sidewalks along Main Street between Kissena Boulevard/41st Avenue and Northern Boulevard.

Vision Zero: Pedestrian Safety Action Plan

The **Downtown Flushing Mobility and Safety Improvement Project** (2016), which focused on the holistic improvement of pedestrian and vehicular circulation across the study area, resulted in a number of safety improvements, including:

- Bolted-protected curbs and sidewalk extensions at high-volume pedestrian corridors
- Bolted turns and modified signal timing at multiple intersections

This project paved the way to establish an improved road network that aligns with goals outlined in the **Vision Zero: Pedestrian Safety Action Plan for Queens** (2015).

Vision Zero uses Downtown Flushing as a case study, due to the dense concentration of pedestrian ESI crashes. Between 2009 and 2013, there were 353 crashes in the area involving pedestrians, resulting in 80 severe injuries and 11 fatalities.

At the same time, more than 10% of area residents walk to work, about double the total Queens share. Car ownership is relatively low in Flushing making pedestrian safety an important priority.



Prince Street Triangle

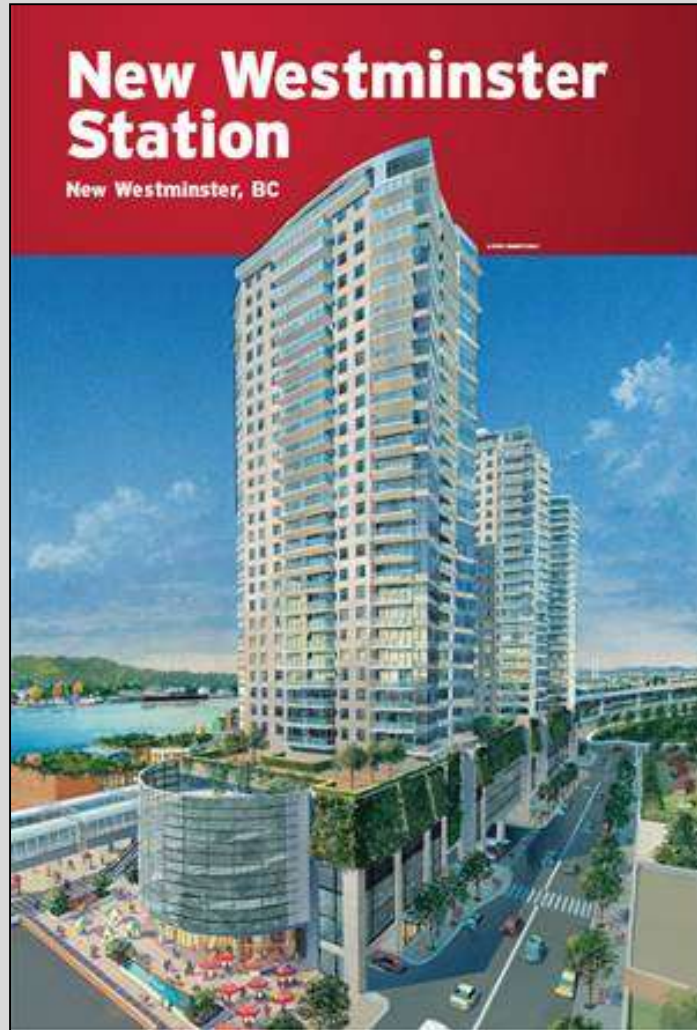


Sidewalk congestion on Main Street



Strategies and Draft Recommendations

- Provide relief to bus congestion from curbside lay overs in the downtown
- Evaluate siting a mixed-use Bus Transit Center (BTC) at an appropriate location within the rezoning area
- Provide a zoning incentive that would encourage the development of a BTC and related mixed-use development
- Set zoning requirements to ensure appropriate size and other elements to ensure BTC will be compatible with vision for the area



WHAT WE HEARD

“Applying for affordable housing can be complicated, and waiting lists are long”

“Tenant harassment and housing quality are concerns, but people are afraid to complain or don’t know about their rights and resources”

“We need to care for the elderly and those who are on fixed incomes, and prevent homelessness.”

“Lots of people are moving here, but there is not enough housing and it is becoming more expensive”

“New development should promote small business opportunities and local jobs”

“We need more affordable housing for low to moderate income families and singles”

“People are interested in homeownership, but it is not affordable in the neighborhood”

GOAL 01: PROTECT FLUSHING TENANTS FROM DISPLACEMENT

EXISTING TOOLS:

- 311 and HPD Office of Enforcement and Neighborhood Services
- Community Partnerships + referrals
- Free Legal Services
- Tenant Support Unit
- Tenant Harassment Task Force
- Tenant Protection Unit

- HRA's¹ "One-Shot" grants
- Homeless Prevention Fund
- Home Energy Assistance Program
- Longer term rent assistance (vouchers)
- Dept. of Finance's SCRIE/DRIE & SCHE/DHE²

- NYFSC³ Senior Home Sharing Program
- Housing Connect & Housing Ambassadors
- Home First down payment assistance

- HPD Preservation Programs



1. NYC Human Resources Administration (HRA)
2. Department of Finance (DOF)'s Senior Citizens and Disability Rent Increase Exemption programs and Homeowner's Exemption programs.
3. New York Foundation for Senior Citizens (NYFSC)

GOAL 01: PROTECT FLUSHING TENANTS FROM DISPLACEMENT

ADDITIONAL STRATEGIES:

- Work with community groups & elected officials in Flushing to enhance tenants' access to information through:
 - **Tenant Resource Fairs**
 - **Pamphlets and guides** to community organizations
 - Connect agency and service representatives to **distribute info at local events and target enrollment**
 - **Tenant Support Unit**
- Make it easier to apply for HPD affordable housing:
 - **New Marketing Guidelines** to expand range of credit and background eligibility
 - Training **Housing Ambassadors** to help residents apply



GOAL 02: PRESERVE EXISTING AFFORDABLE HOUSING IN FLUSHING

STRATEGIES:

- Enhance marketing and outreach efforts to owners of buildings that are not currently government assisted / regulated through multilingual mailings and Landlord Resource Nights.
- Implement the new **Green Housing Preservation Program** to incentivize building owners to rehabilitate or retrofit their buildings for energy efficiency, and keep rents affordable.
- Continue to **proactively monitor buildings** in the area with existing regulatory agreements and **strive to preserve** all identified government-assisted housing whose agreements are expiring.

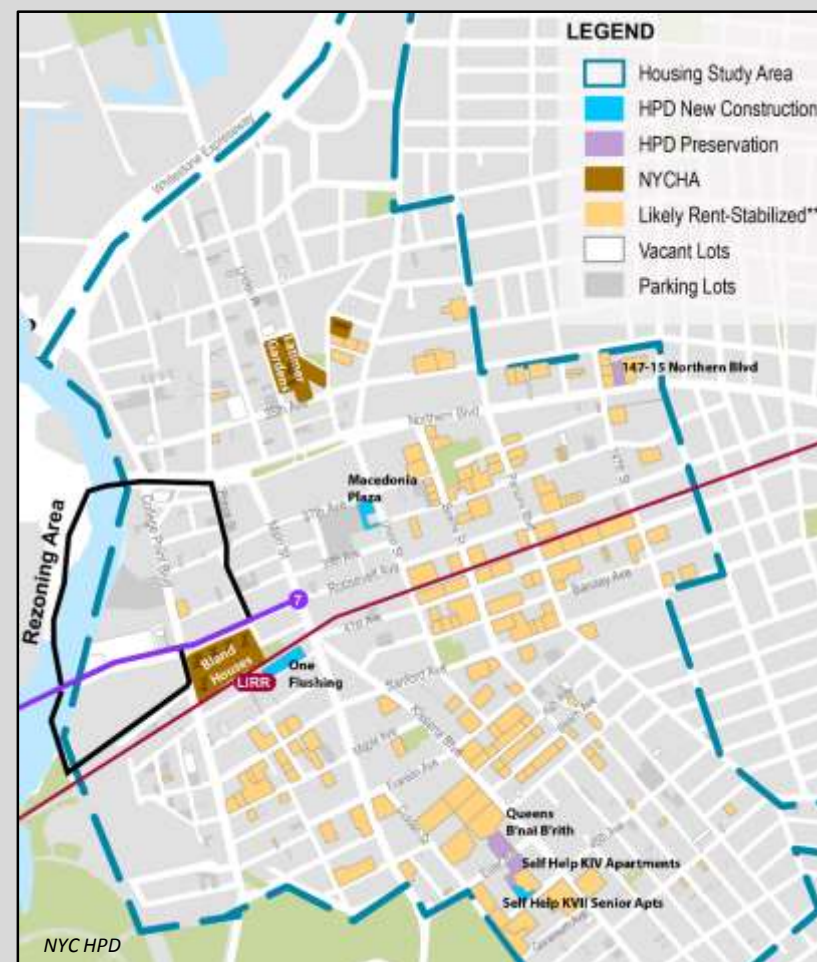


Photo: Scheuer House on Elder Avenue is a HPD preservation project completed 2007 with 159 units of low income housing

GOAL 03: DEVELOP NEW AFFORDABLE HOUSING IN FLUSHING

STRATEGIES:

- Implement the **Mandatory Inclusionary Housing** program within the rezoning area to require 25% or 30% permanently affordable housing on privately-redeveloped sites.
- Consider offering **HPD subsidy for owners of private sites** to develop affordable housing for a range of incomes using our programs:
 - ELLA
 - M2
 - Mix and Match
 - SARA / SHLP
- Consider proposals from developers to build **affordable multi-family homeownership** projects in Flushing with HPD subsidy.
- Support **mission-driven organizations** to develop affordable housing on their sites.



GOAL 03: DEVELOP NEW AFFORDABLE HOUSING IN FLUSHING

STRATEGIES:

- Consider nearby **City-owned sites** for the development of deeply affordable housing and other important neighborhood needs through a Request for Proposals (RFP).
- Facilitate community visioning to inform what could be built on the site.
- Increase outreach on HPD's **Home First down payment assistance program**, while expanding resources to assist first-time low- and moderate-income homebuyers.



GOAL 04: PROMOTE ECONOMIC DEVELOPMENT IN FLUSHING

STRATEGIES:

- HPD will continue working with SBS and EDC to leverage affordable housing development to create local jobs and strengthen small businesses:
 - Expand opportunities for **minority and women-owned businesses** in affordable housing development.
 - Implement **HireNYC** to connect local residents to career training and job opportunities in affordable housing.
 - Integrate new housing with **spaces for small businesses and local retail**.



WHAT WE HEARD

Need additional sanitation services to maintain thriving Flushing commercial corridors

Need more job training programs

Need greater access to business and workforce resources

Need M/WBE certification assistance

Need legal assistance for lease negotiations



GOAL: STRENGTHEN COMMERCIAL CORRIDORS

STRATEGIES:

- Partner with CBDOs on [Neighborhood 360°](#) to conduct a needs assessment on major commercial corridors
- Place [Neighborhood 360° fellow](#) in local CBDOs to assist with implementing needs assessment recommendations



GOAL: SUPPORT EXISTING BUSINESSES AND BUSINESS GROWTH

STRATEGIES:

- **Provide legal assistance** by launching Commercial Lease Workshops to help Flushing business owners better understand and negotiate commercial leases
- Assist Flushing small businesses with navigating the City's regulatory environment through the **Small Business First Initiative**
- Provide free **FastTrac GrowthVenture** business education training exclusively for Flushing business owners
- Host **M/WBE certification workshops** for potential and eligible Flushing businesses to assist with doing business with the City



GOAL: CONNECT RESIDENTS TO CAREER OPPORTUNITIES

STRATEGIES:

- Connect local residents to career training and job opportunities in City-funded developments
 - Implement [HireNYC](#)
 - Connect NYCHA residents to training for entry-level construction jobs through the [NYCHA Residents Training Academy \(NRTA\)](#)
- Increase additional resources to the existing [Workforce1 Satellite Center](#) at the Flushing Public Library
- Expand the Workforce1 local [Community Partner Network](#) in Flushing to improve job training and placement opportunities

Image: NYC SBS



CONTACT US

John Young- Director, Queens Office

Email: JYoung@planning.nyc.gov

Joy Chen- Project Manager, Flushing West

Email: JChen@planning.nyc.gov

Kathi Ko- Outreach Coordinator, Flushing West

Email: KKo@planning.nyc.gov

To Learn More

Website: www.nyc.gov/flushing-west

Email: flushingwest@planning.nyc.gov

Queens Office: 718-520-2100