

REACH 21- ARTHUR KILL NORTH

Location: Arthur Kill from New Jersey rail spur to the southern boundary of Freshkills Park.

Upland Neighborhoods: Bloomfield, Travis, Freshkills

Neighborhood Strategies

Reachwide

- Explore possible extension or creation of Significant Maritime and Industrial Area (SMIA).
- Create a master plan that integrates ecological complexes into a single, linked preserve. Include opportunities and constraints analysis for acquisition, restoration, brownfield remediation, public access, and stormwater management.

Bloomfield Waterfront

1

- Reutilize industrial sites with modern distribution, maritime and commercial facilities that utilize the waterfront for goods movement, with sensitivity to existing wetlands.
- Explore financing mechanisms for essential infrastructure.
- Explore opportunities for public point access to waterfront.

Goethals Bridge

1.a

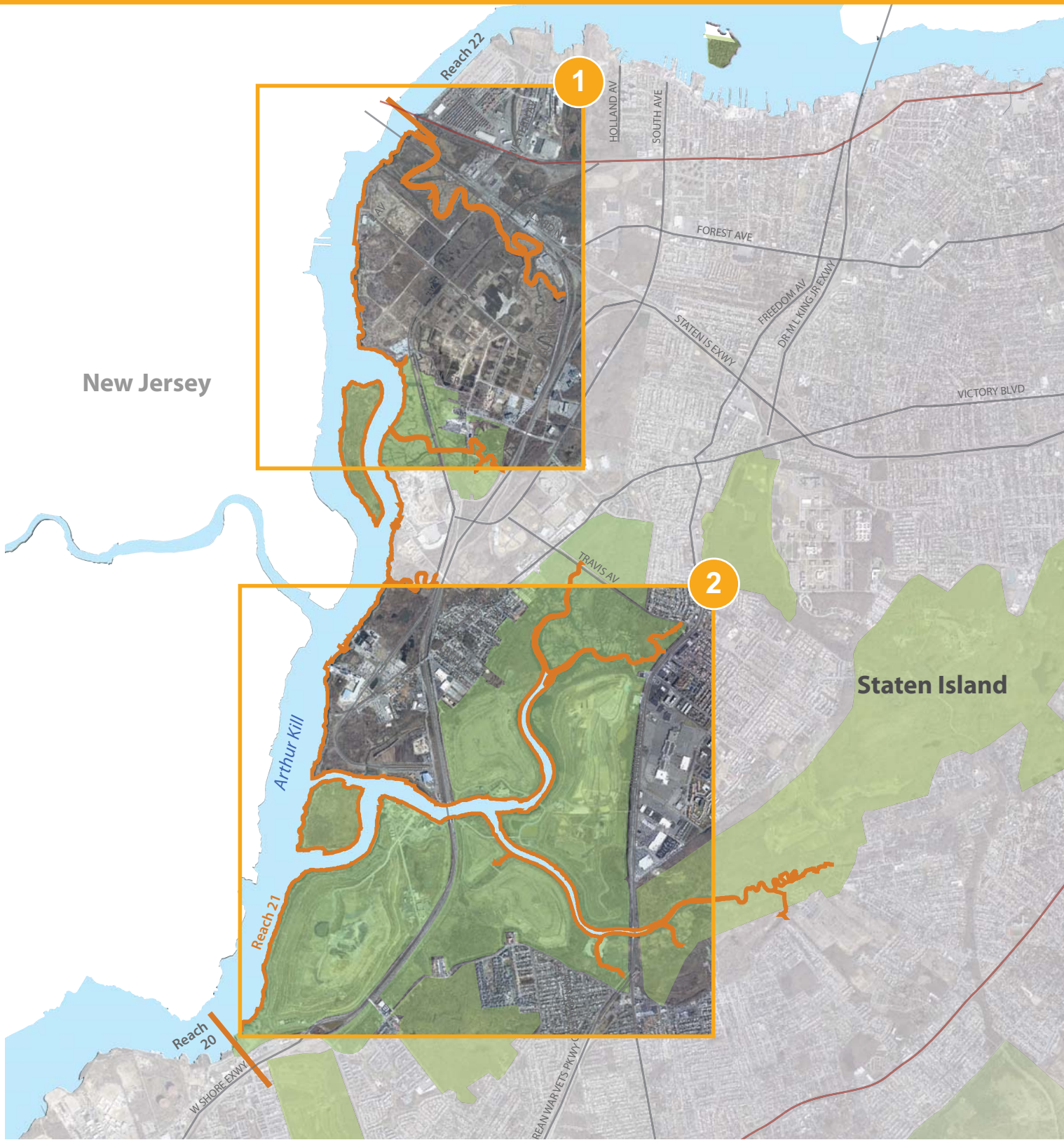
- Support designated site of new bridge and advocate for construction.
- Support expansion of maritime industry around new Goethals Bridge.
- Support provision of bike, pedestrian, and transit access on new bridge.

Freshkills Park

2

- Develop the first public access areas overlooking Main Creek.
- Construct portions of the new greenway construction.
- Explore opportunities for boat launch based on the criteria described in the Citywide Strategy.
- Protect and enhance natural habitats in appropriate areas within park.
- Support implementation of master plan for parkland.
- Map officially as parkland.
- Increase transportation to and through the park, with consideration for ferry, light rail and bus rapid transit.
- Explore potential sources of revenue such as park concessions.
- Promote as an eco-tourism destination.
- Retain barge tie-up fender systems and DSNY barge fleet during park construction.

REACH 21- ARTHUR KILL NORTH



— Reach Boundary

○ Recommendation Areas

■ Major Parklands

