



First Avenue/Second Avenue SBS Community Advisory Committee Meeting

Hunter College School of Social Work
Thursday, January 14, 2010

Agenda

Introductions

Project Schedule

Station Locations Update

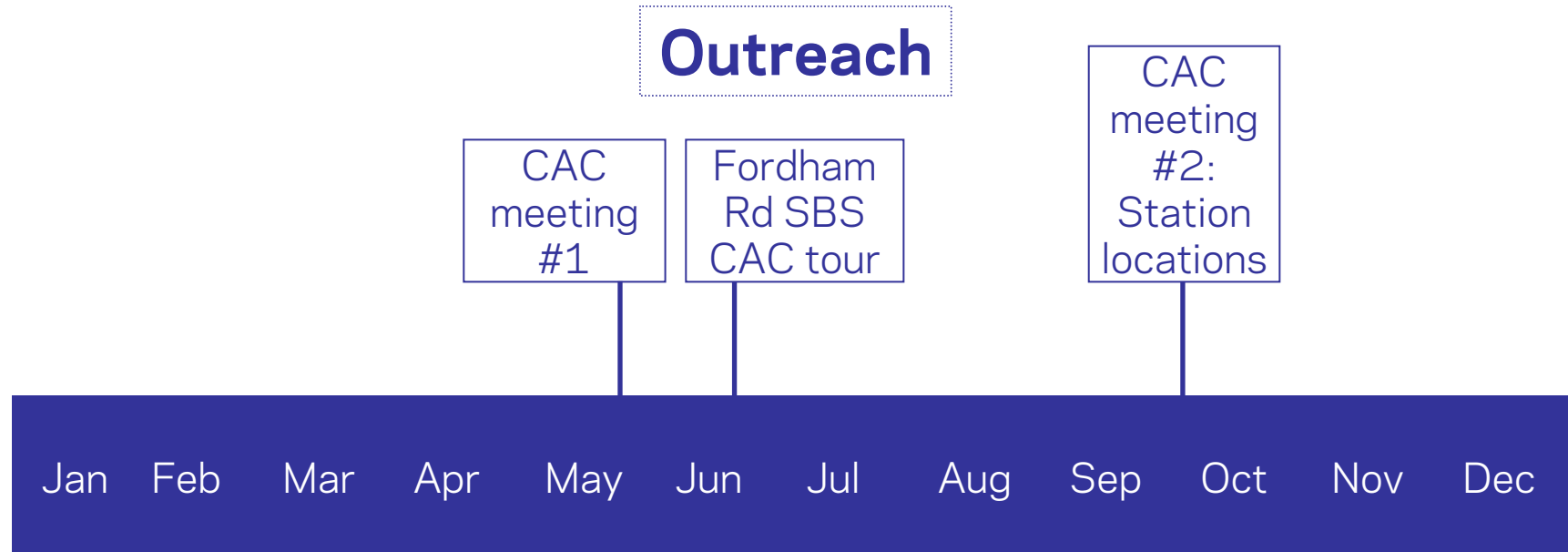
Design Goals

Design Update

Next steps

First Avenue/Second Avenue SBS

2009 Schedule

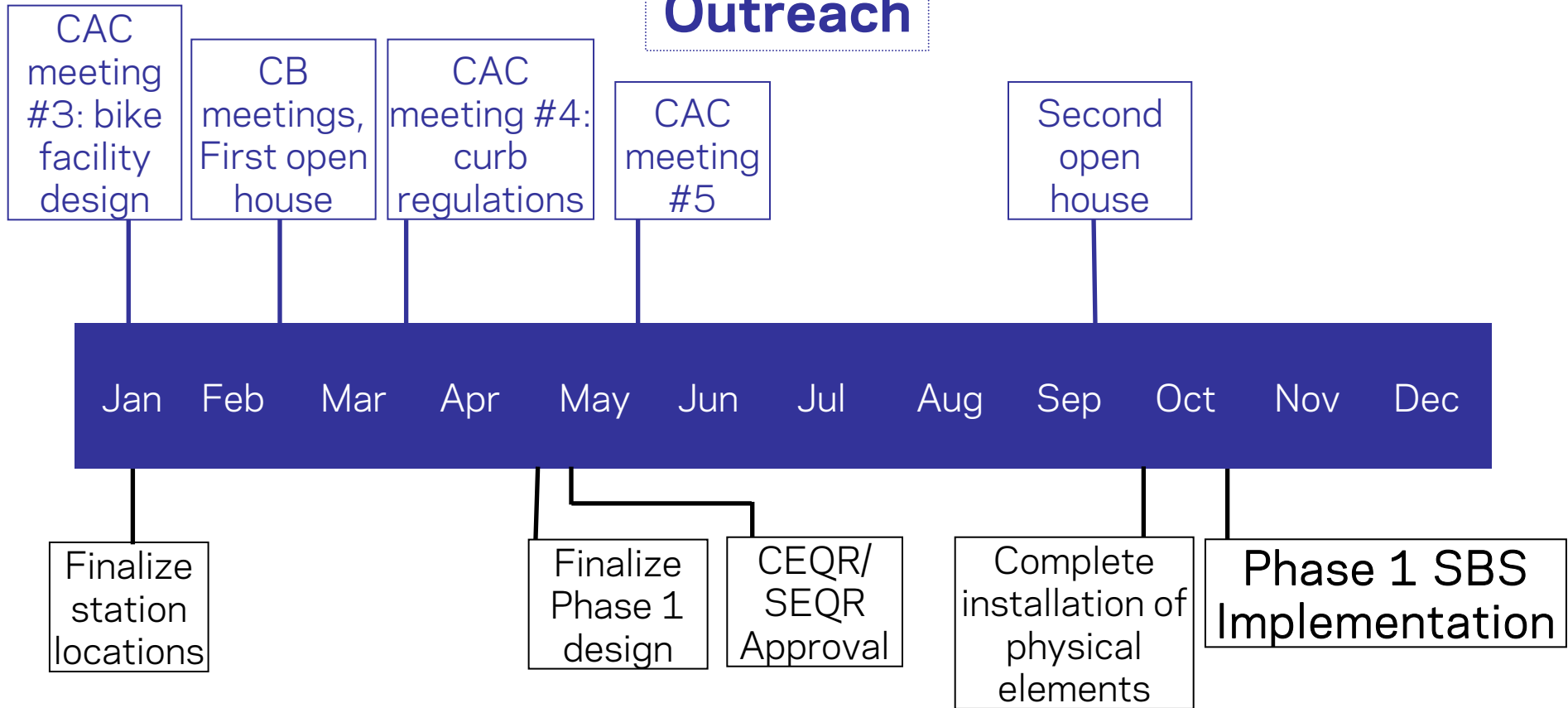


Project Milestones

First Avenue/Second Avenue SBS

2010 Schedule

Outreach



Project Milestones

Station Locations Update

First Avenue/Second Avenue SBS

Grand Street/Allen Street



Northbound

SBS north of local between Grand and Broome Streets

Southbound

SBS between Hester and Grand Streets
Local between Grand and Broome Streets

Local Stop
SBS Station

Sidewalk Vault
Phone Booth

Existing Bus Stop
Street Tree

S Subway Entrance
n Bicycle Rack

First Avenue/Second Avenue SBS

57th Street/First Avenue (Northbound)



SBS north of local between 56th and 57th Streets

M57 stops on the far side of 57th Street

Issues:

street trees

bike racks

Local Stop
SBS Station

Sidewalk Vault
Phone Booth

Existing Bus Stop
Street Tree

S Subway Entrance
B Bicycle Rack

First Avenue/Second Avenue SBS

67th Street/First Avenue (Northbound)



SBS between 67th and 68th Streets
Local between 66th and 67th Streets

Local Stop
SBS Station

Sidewalk Vault
Phone Booth

Existing Bus Stop
Street Tree

Subway Entrance
Bicycle Rack

First Avenue/Second Avenue SBS

79th Street/First Avenue (Northbound)



SBS south of local between 79th and 80th Streets

Issues:

- street trees
- phone booth

Local Stop
SBS Station

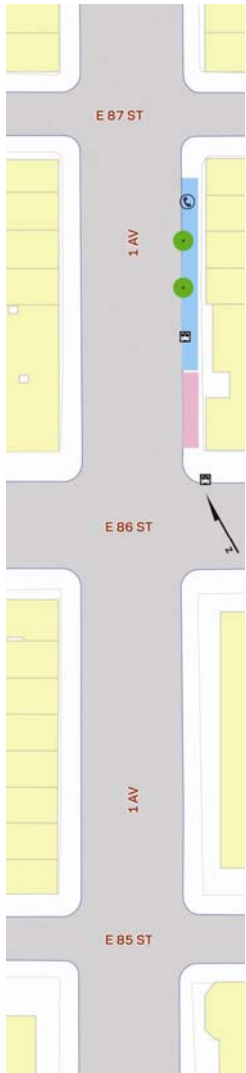
Sidewalk Vault
Phone Booth

Existing Bus Stop
Street Tree

Subway Entrance
Bicycle Rack

First Avenue/Second Avenue SBS

86th Street/First Avenue (Northbound)



SBS north of local between 86th and 87th Streets

Issues:

street trees

phone booth

Local Stop
SBS Station

Sidewalk Vault
Phone Booth

Existing Bus Stop
Street Tree

Subway Entrance
Bicycle Rack

First Avenue/Second Avenue SBS

106th Street/First Avenue (Northbound)



SBS north of local between 106th and 107th Streets

Local Stop
SBS Station

Sidewalk Vault
Phone Booth

Existing Bus Stop
Street Tree

Subway Entrance
Bicycle Rack

First Avenue/Second Avenue SBS

79th Street/Second Avenue (Southbound)



SBS north of local between 78th and 79th Streets

Local Stop
SBS Station

Sidewalk Vault
Phone Booth

Existing Bus Stop
Street Tree

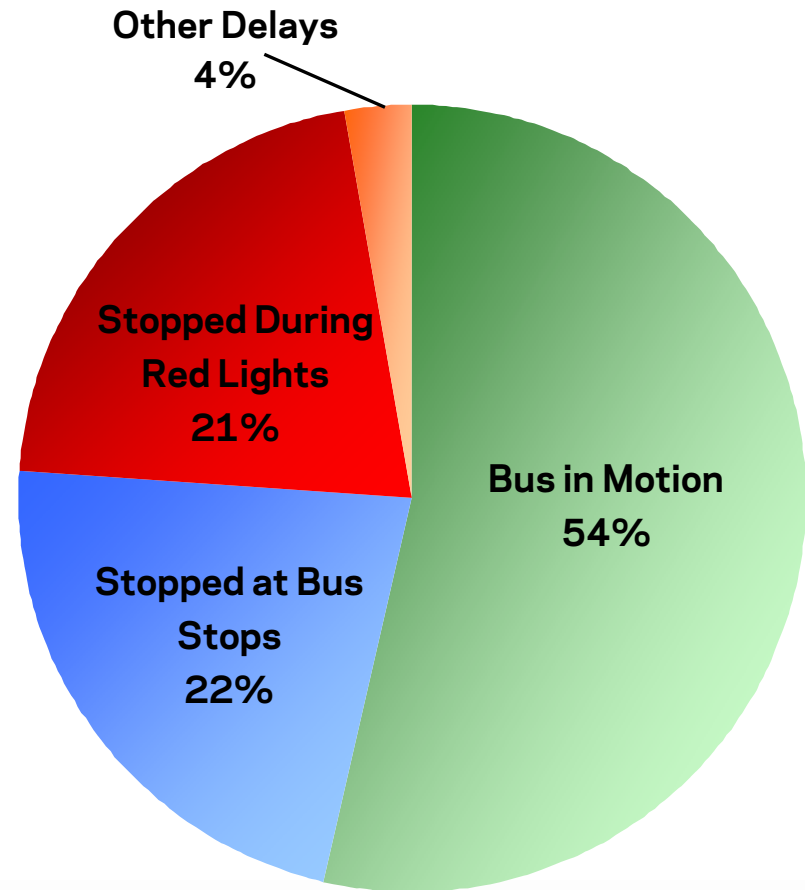
Subway Entrance
Bicycle Rack

Design Goals

Design Goals

Improve bus service

Sources of delay on M15 Limited



34th Street Enhanced Bus Priority

Features:

- Curbside bus lane
- Real-time arrival information
- Left-turn signal priority
- Taxi video enforcement

Results:

- 17% improvement in travel time
- 29% less time stopped at red lights



Fordham Road Select Bus Service

Features:

Curbside Bus Lane

Off-Board Fare Collection

Transit Signal Priority

Results:

Travel Time: 20% reduction
in running time

Ridership: 10% increase
from October 2007 to
October 2008

Customer Satisfaction:
98% satisfied or very
satisfied



Design Goals

Improve bus service

Improve pedestrian safety

Pedestrian safety data, 2006-2008

	Pedestrian fatalities	Pedestrian crashes
First Avenue	7	538
Second Avenue	4	597

First Avenue/Second Avenue SBS

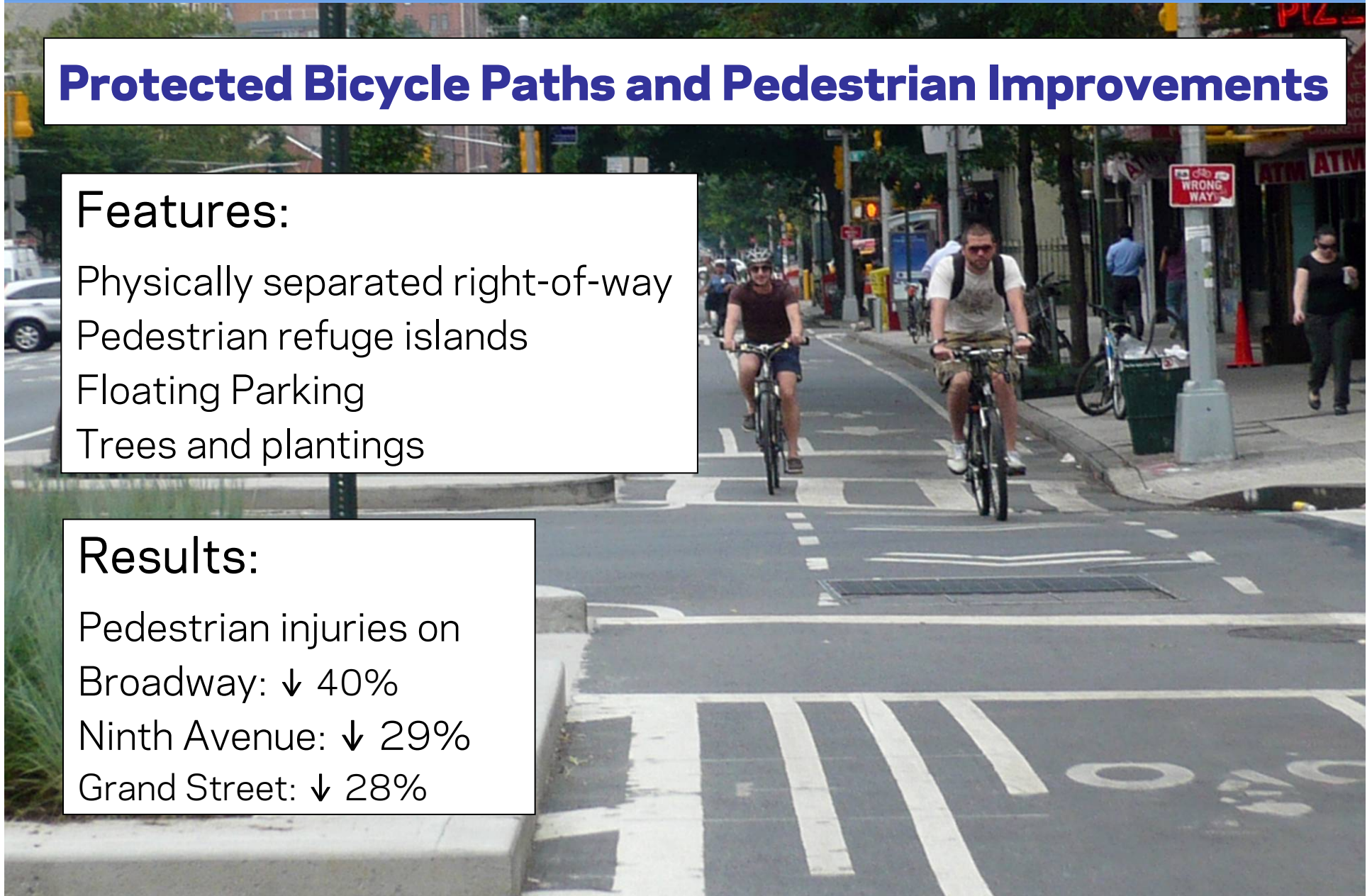
Protected Bicycle Paths and Pedestrian Improvements

Features:

- Physically separated right-of-way
- Pedestrian refuge islands
- Floating Parking
- Trees and plantings

Results:

- Pedestrian injuries on
Broadway: ↓ 40%
- Ninth Avenue: ↓ 29%
- Grand Street: ↓ 28%



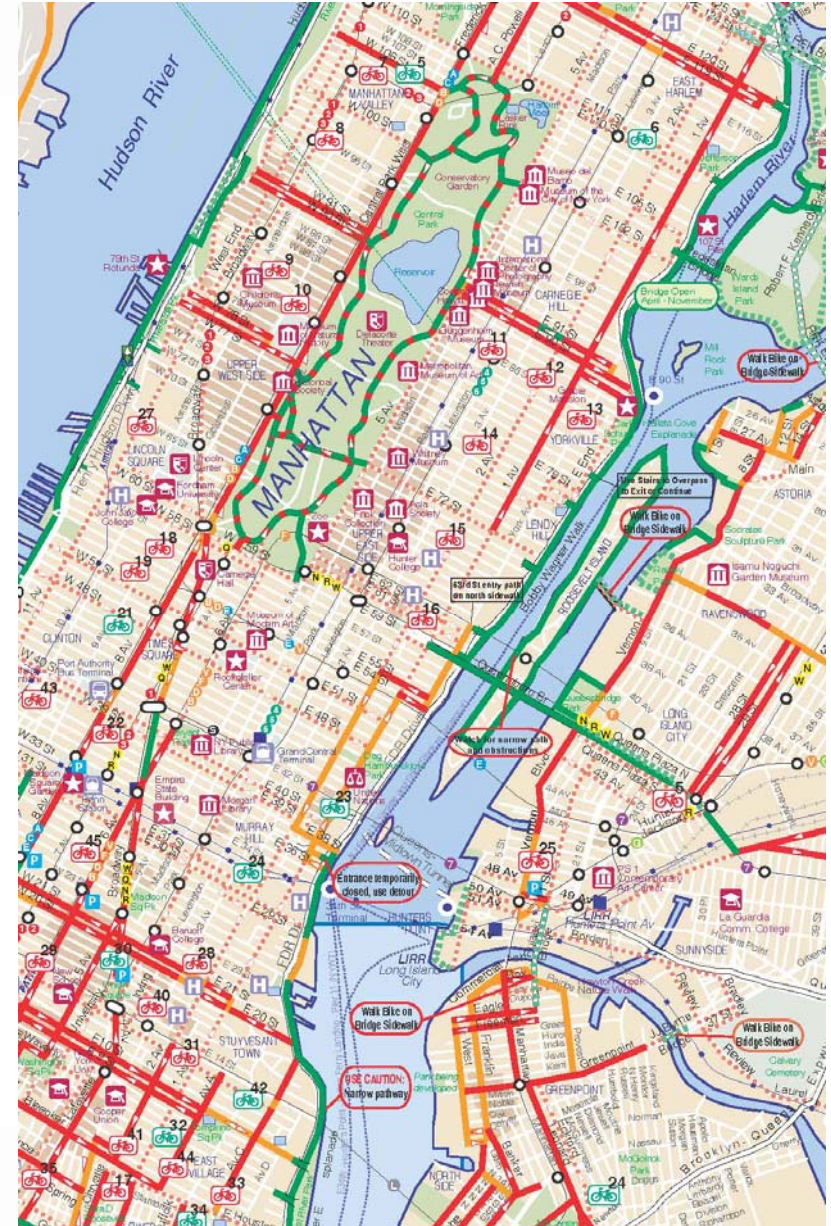
First Avenue/Second Avenue SBS

Design Goals

Improve bus service

Improve pedestrian safety

Improve bicycle access on the East Side



First Avenue/Second Avenue SBS

Protected Bicycle Paths and Pedestrian Improvements

Results:

Bike volumes on

Broadway ↑ 58%

Ninth Avenue ↑ 37%

Grand Street ↑ 24%



Design Goals

Improve bus service

Improve pedestrian safety

Improve bicycle access on the East Side

Maintain traffic flow

Allow curb access for deliveries, dropoffs

Provide metered parking

Design Update

Street Design

Range of treatments throughout the corridor due to:

- Traffic levels

- Changes in street width

- Curbside access needs

First Avenue/Second Avenue SBS

Design A



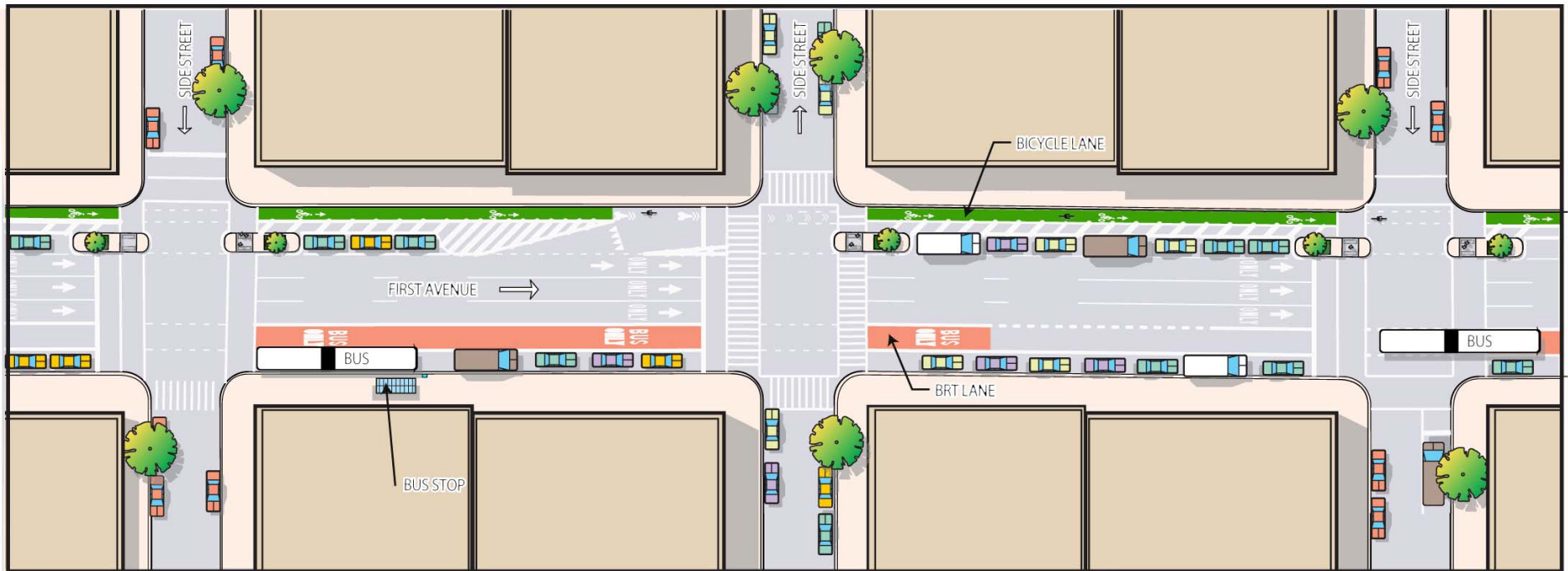
First Avenue/Second Avenue SBS

Design A



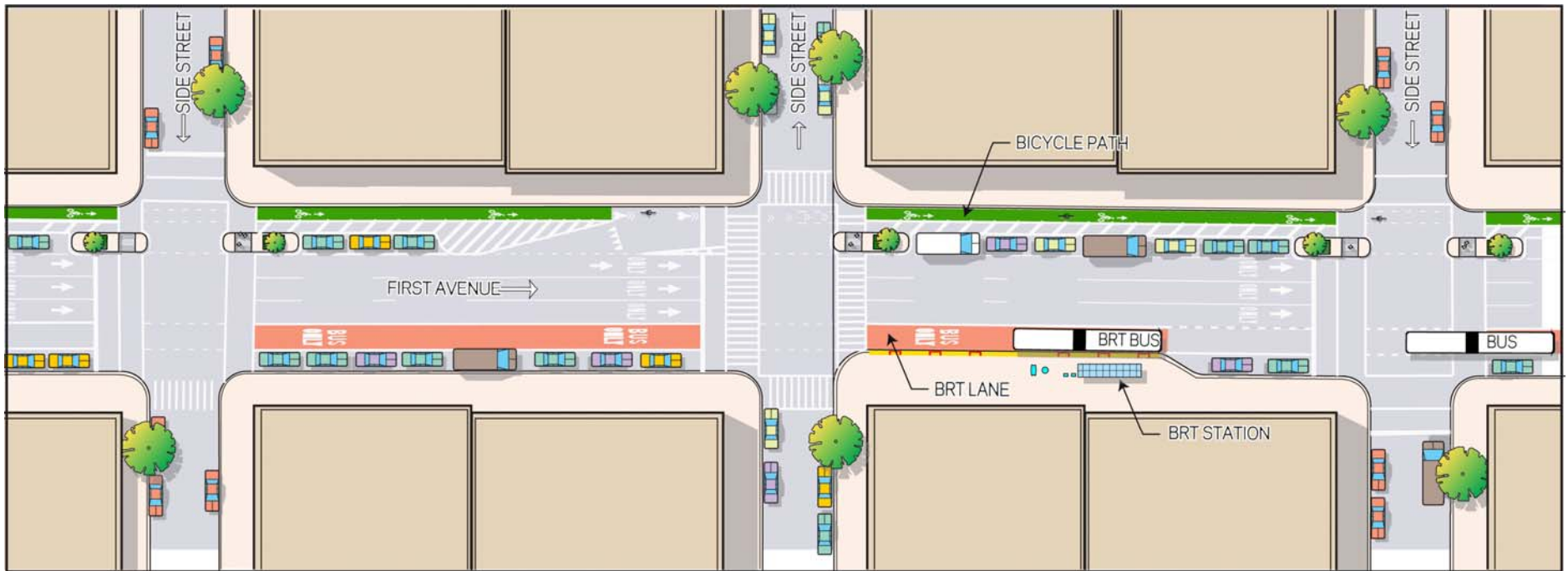
First Avenue/Second Avenue SBS

Design A



First Avenue/Second Avenue SBS

Design A with bus bulb



First Avenue/Second Avenue SBS

Design A with bus bulb



First Avenue/Second Avenue SBS

Typical Bus Bulb



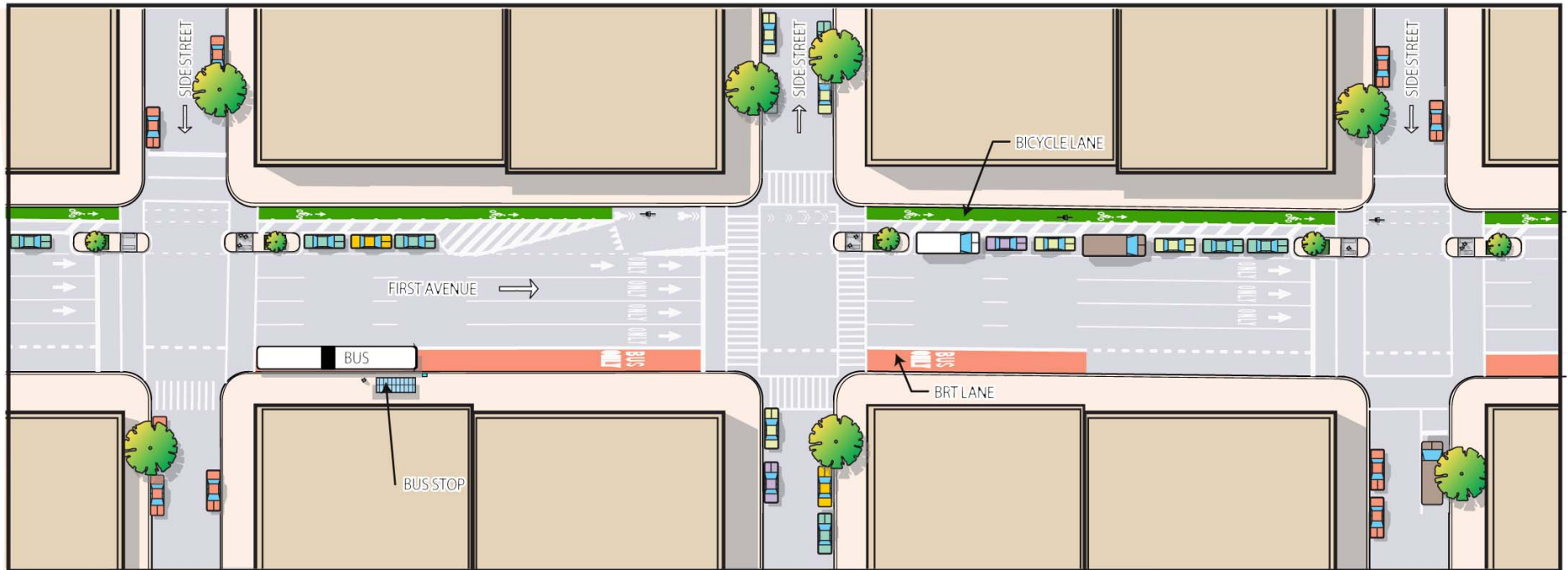
First Avenue/Second Avenue SBS

Design B



First Avenue/Second Avenue SBS

Design B



First Avenue/Second Avenue SBS

Design B



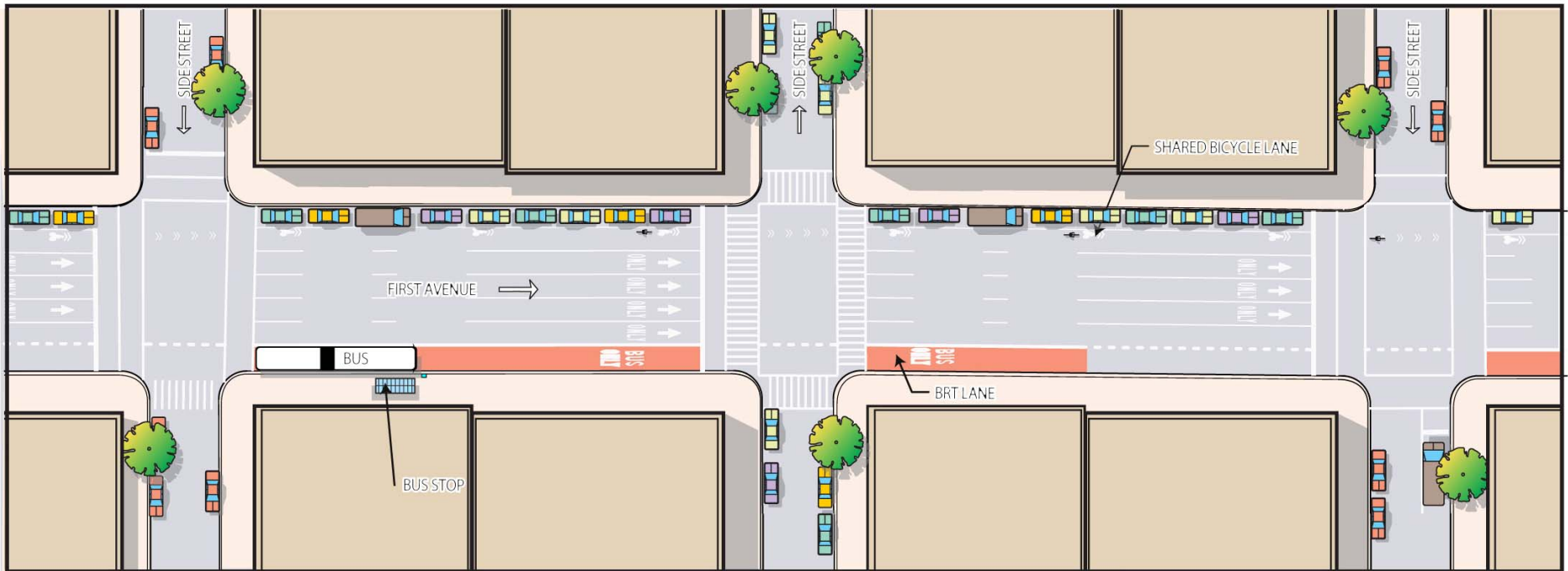
First Avenue/Second Avenue SBS

Design C



First Avenue/Second Avenue SBS

Design C



First Avenue/Second Avenue SBS

Corridor Map

- SBS Station
- A: Offset Bus Lane, Protected Bike Path
- B: Curb Bus Lane, Protected Bike Path
- C: Curb Bus Lane, Shared Bike Lane
- A or B, subject to further analysis
- No change to street design
- Construction Zone



Questions and Comments?

Next Steps

Input on curb use

Next meetings

Public Open House/Workshops - February 2010

Fourth CAC meeting - March 2010