



 New York City Transit

# First Avenue/Second Avenue Select Bus Service

Manhattan Community Board 3 Transportation Committee  
Wednesday, March 10, 2010

## Agenda

Project Overview

Project Schedule

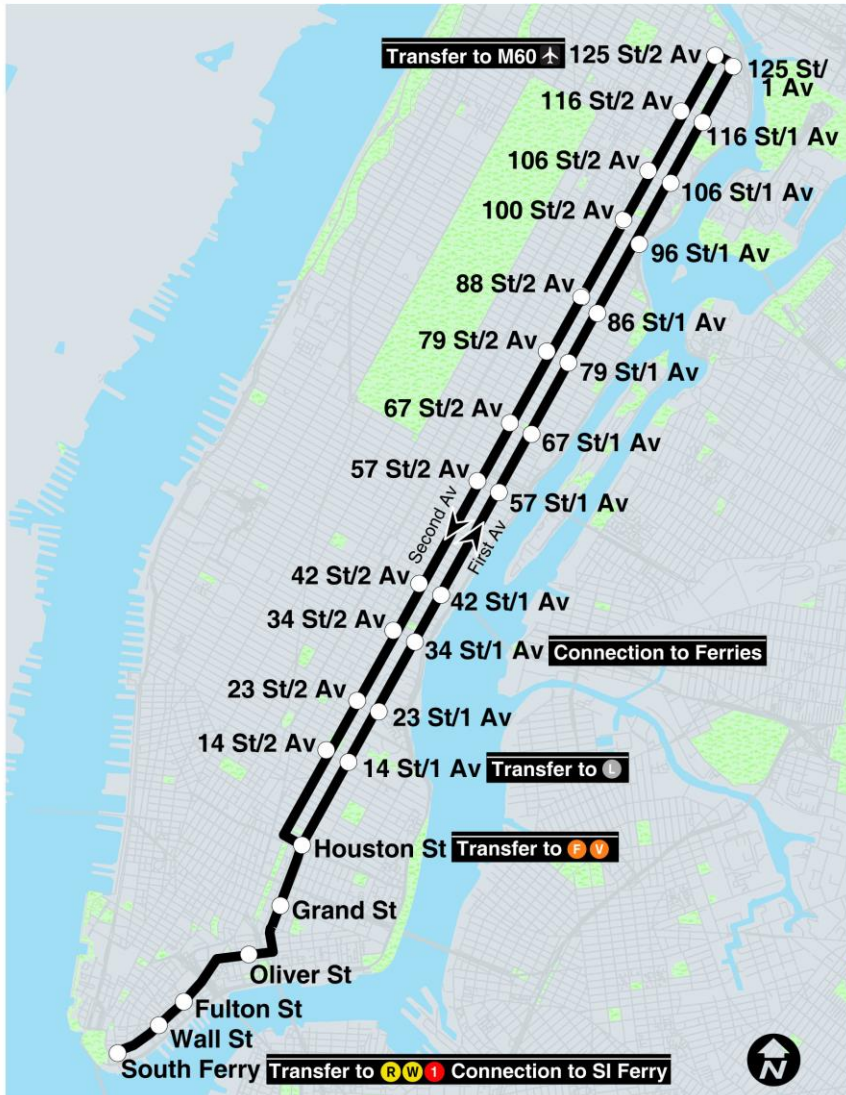
Design Goals

Proposed Design

CB3 Issues

Next Steps

## About the Corridor



8.5 miles from South Ferry to 125<sup>th</sup> Street

Currently served by M15 bus route

Over 57,000 weekday riders

Bus speeds have been declining

Ridership has been decreasing

Within a ¼ mile:

537,000 residents

78% of households do not own a car

57% of residents commute by transit

## SBS Features

<b>Features</b>	<b>Current M15</b>	<b>M15 SBS (2010)</b>	<b>M15 SBS (2012)</b>
Local service	Yes	Yes	Yes
Limited service	Yes	No	No
Simpler service pattern	No	Yes	
Off-board fare collection	No	Yes	
Regular bus fare	Yes	Yes	
Improved bus lanes	No	Yes	
Bus bulbs	No	No	Yes
Transit Signal Priority	No	No	Yes (below Houston St)

## Public Outreach

### Community Advisory Committee

Composed of:

Elected Officials

Community Organizations

Community Boards

Business Representatives

Major Institutions

Transit Customers

Meetings in May 2009, September 2009, January 2010

### Community Board Meetings

Board 1 meeting: December 2009

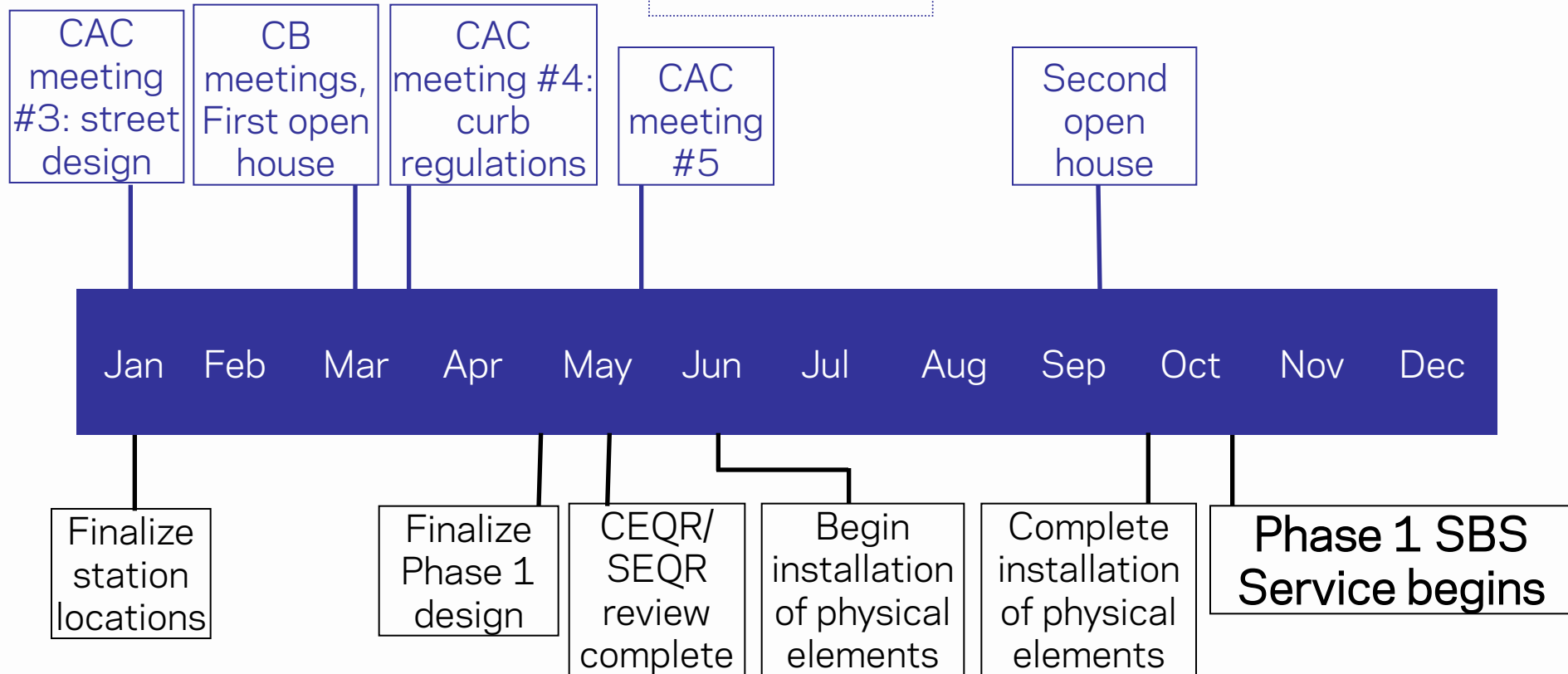
Meetings with Boards 3, 6, 8 and 11: February/March 2010

### Public Open Houses

March 18 and 24, 2010

## 2010 Schedule

### Outreach

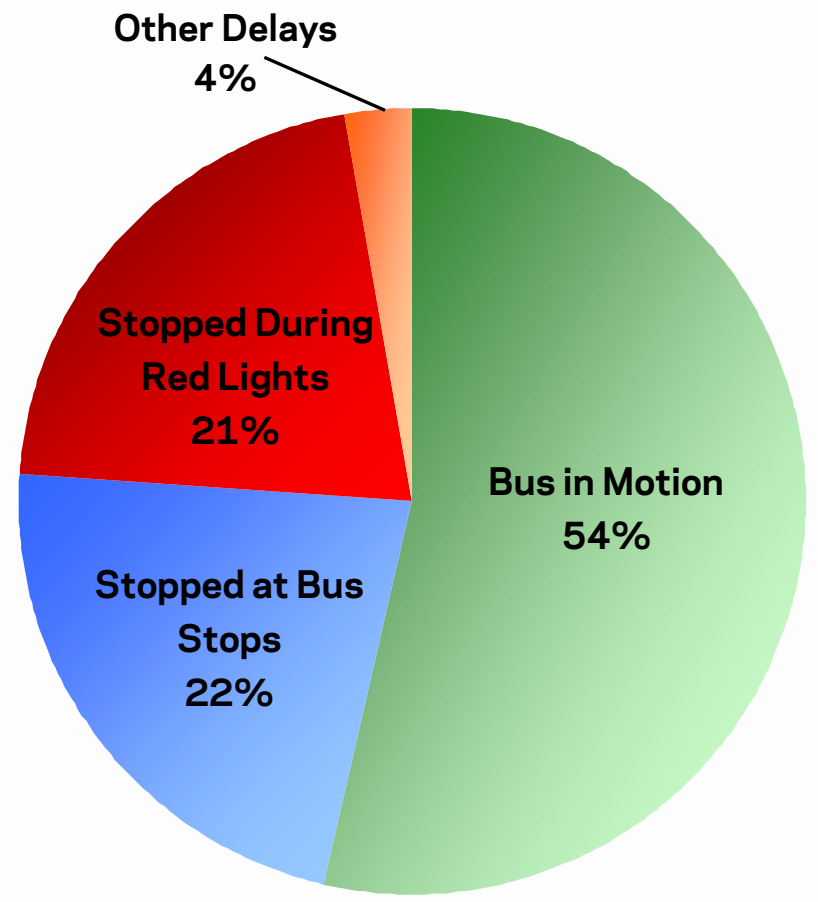


### Project Milestones

## Design Goals

**Improve bus service**

**Sources of delay on M15 Limited**



## Fordham Road Select Bus Service

### Features:

Curbside Bus Lane

Off-Board Fare Collection

Transit Signal Priority

### Results:

Travel Time: 20% reduction  
in running time

Ridership: 10% increase  
from October 2007 to  
October 2008

Customer Satisfaction:  
98% satisfied or very  
satisfied





## Design Goals

Improve bus service

**Improve pedestrian safety**

Pedestrian safety data, 2006-2008

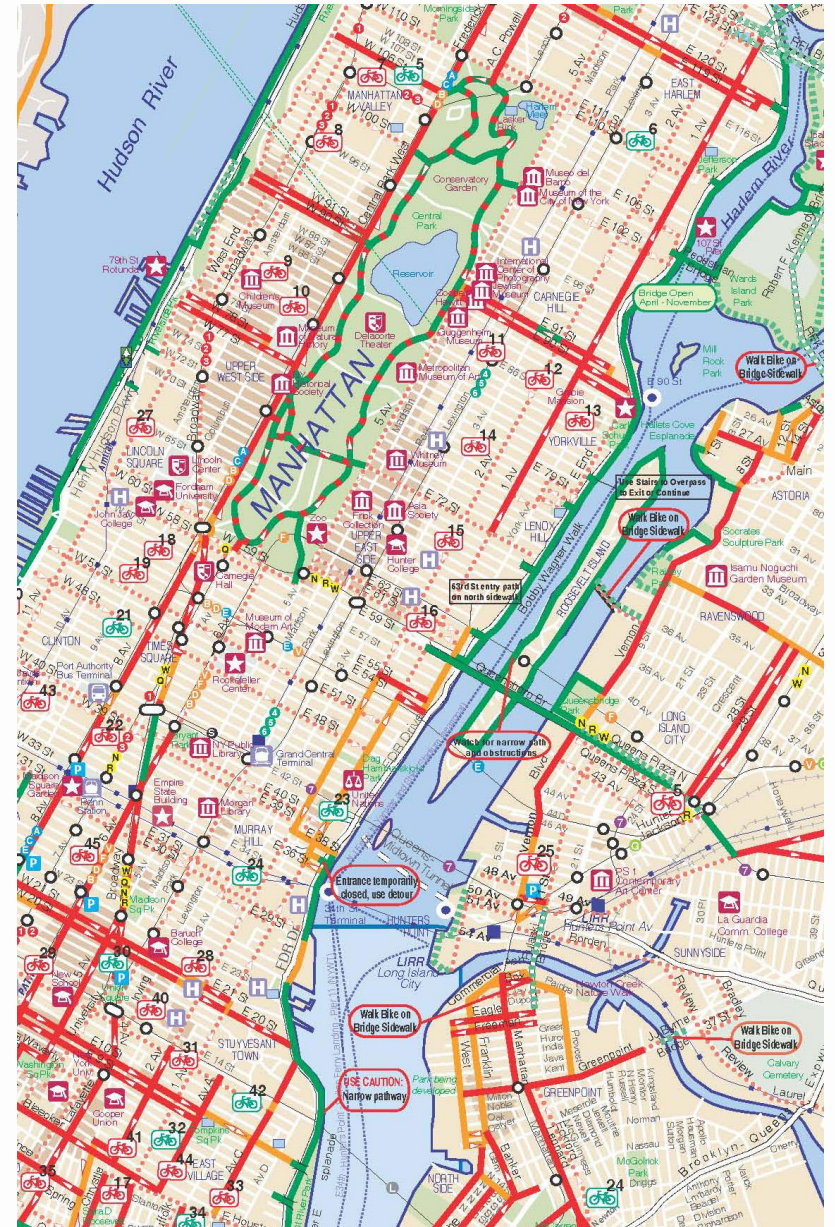
	Pedestrian fatalities	Pedestrian crashes
First Avenue	7	538
Second Avenue	4	597

## Design Goals

Improve bus service

Improve pedestrian safety

**Improve bicycle access on the East Side**



## Protected Bicycle Paths and Pedestrian Improvements



### Features:

- Physically separated right-of-way
- Pedestrian refuge islands
- Floating Parking
- Trees and plantings

	Pedestrian injuries	Bike volumes
Broadway	↓ 40%	↑ 50%
Ninth Avenue	↓ 29%	↑ 37%
Grand Street	↓ 28%	↑ 29%

## Design Goals

Improve bus service

Improve pedestrian safety

Improve bicycle access on the East Side

Maintain traffic flow

Allow curb access for deliveries, dropoffs and short-term parking

# First Avenue/Second Avenue SBS

## Design A

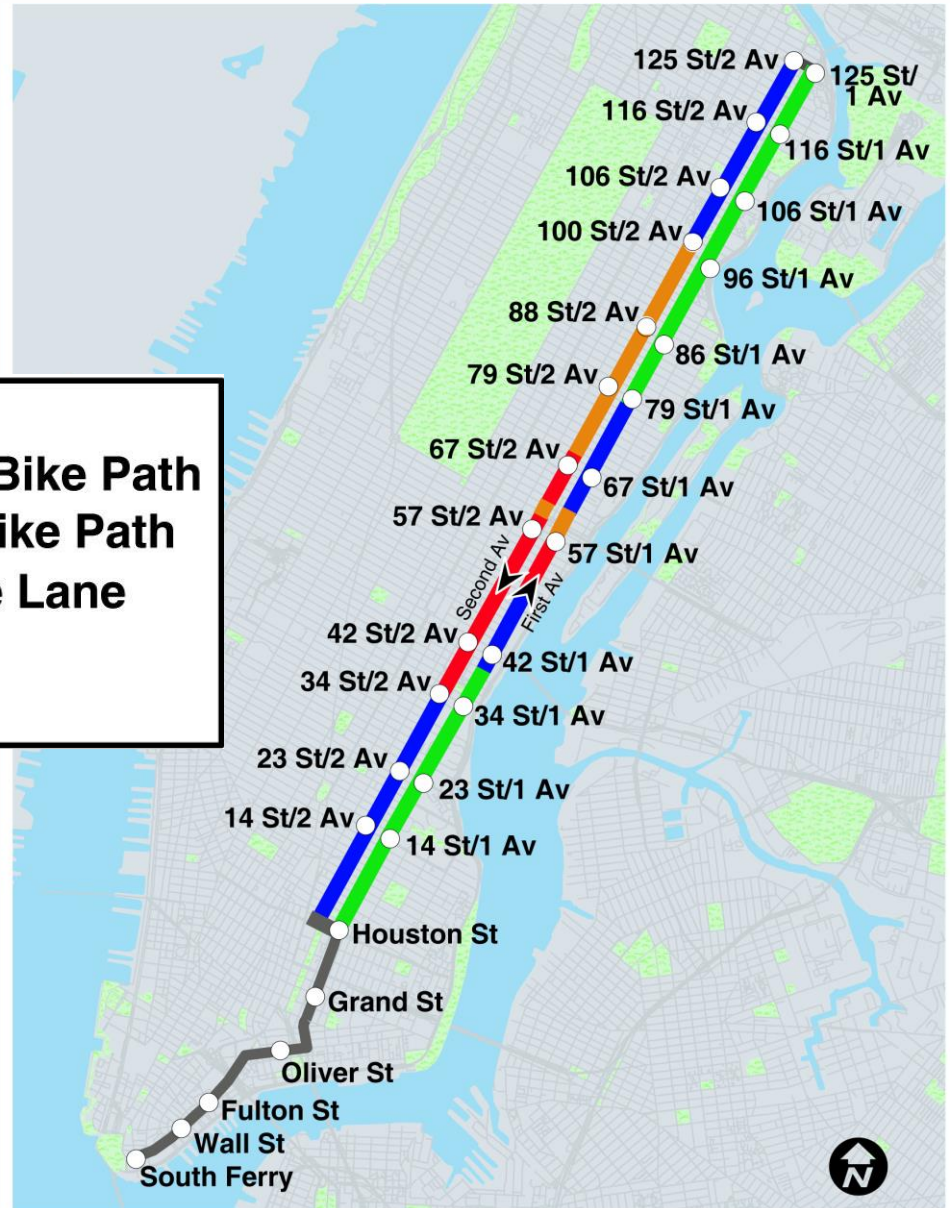


## Design B



## Corridor Map

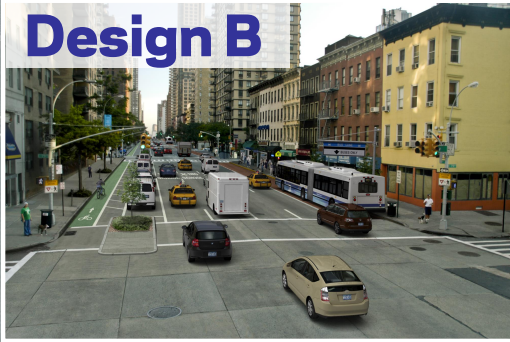
- SBS Station
- A: Offset Bus Lane, Protected Bike Path
- B: Curb Bus Lane, Protected Bike Path
- C: Curb Bus Lane, Shared Bike Lane
- No change to street design
- Construction Zone



# First Avenue/Second Avenue SBS

## Community Board 3

**Design B**



**Design A**



14 St/1 Av

Houston St

Grand St

Oliver St

Fulton St



# CB3 Station Locations

## Oliver Street

Northbound SBS at near side of Oliver St

Southbound SBS at near side of Oliver St



## Grand Street

Northbound SBS at near side of Broome St, north of local stop

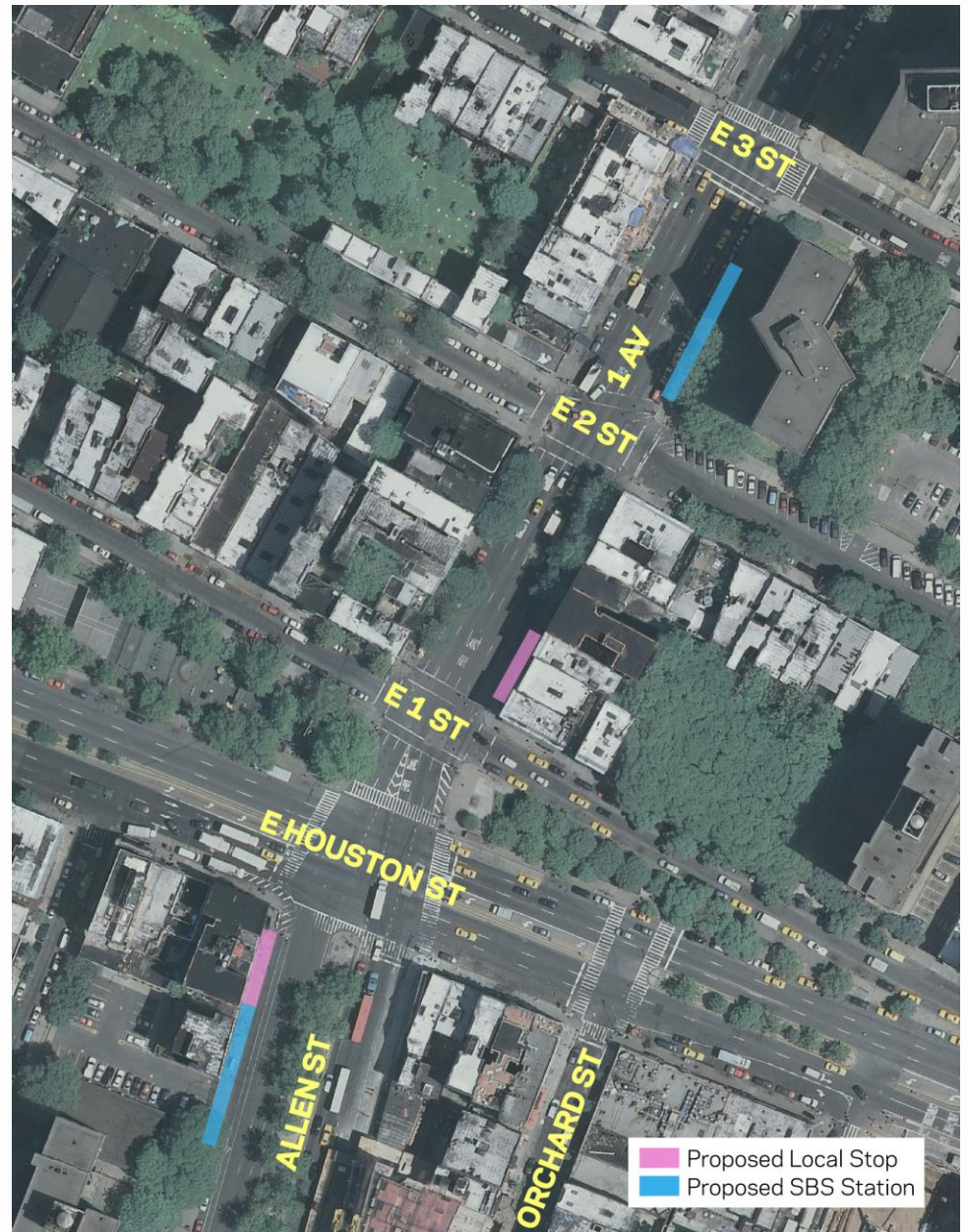
Southbound SBS at far side of Grand St, local at near side



## Houston Street

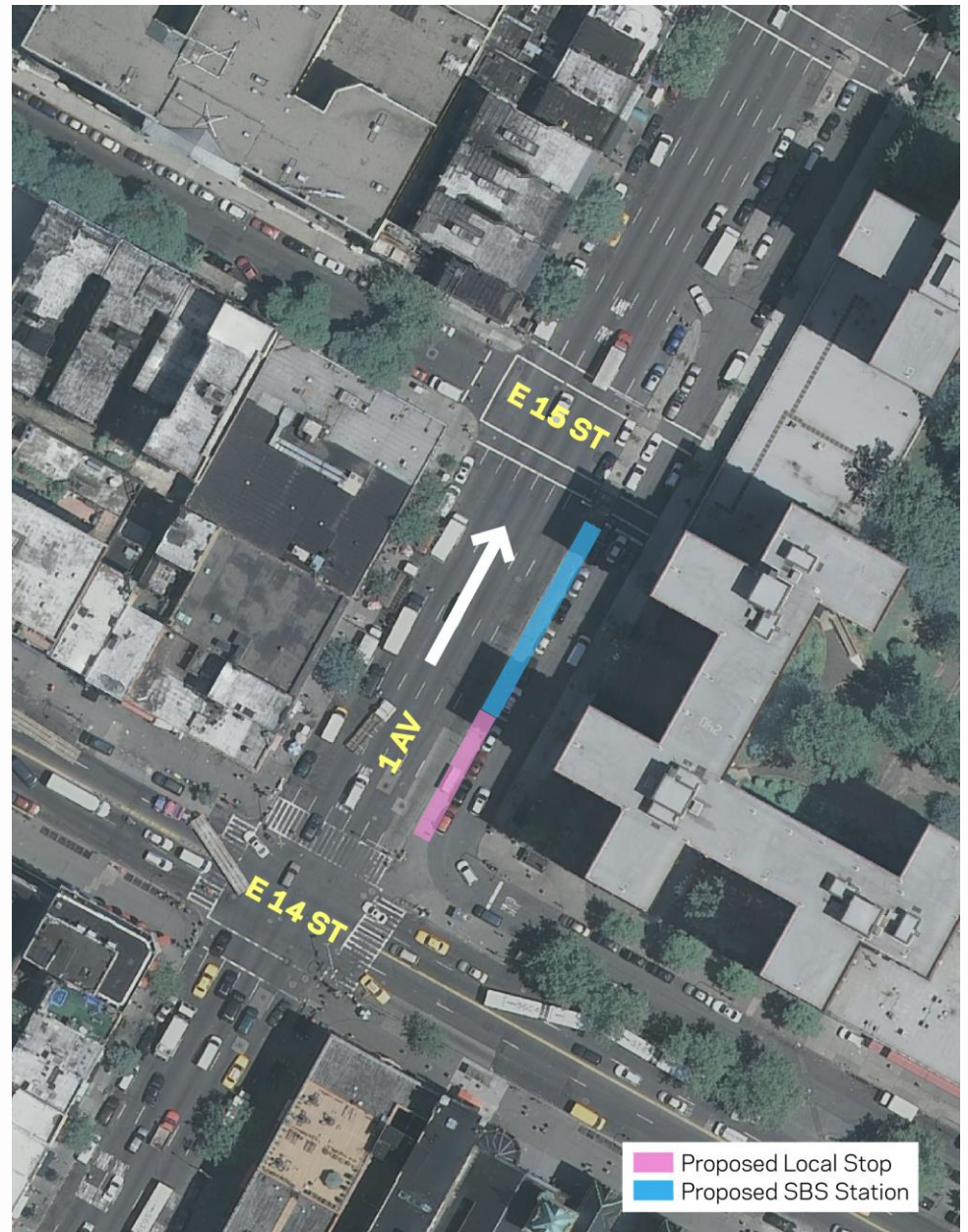
Northbound SBS at far side of 2<sup>nd</sup> St, local at far side of 1<sup>st</sup> St

Southbound SBS at far side of Houston St, south of local stop



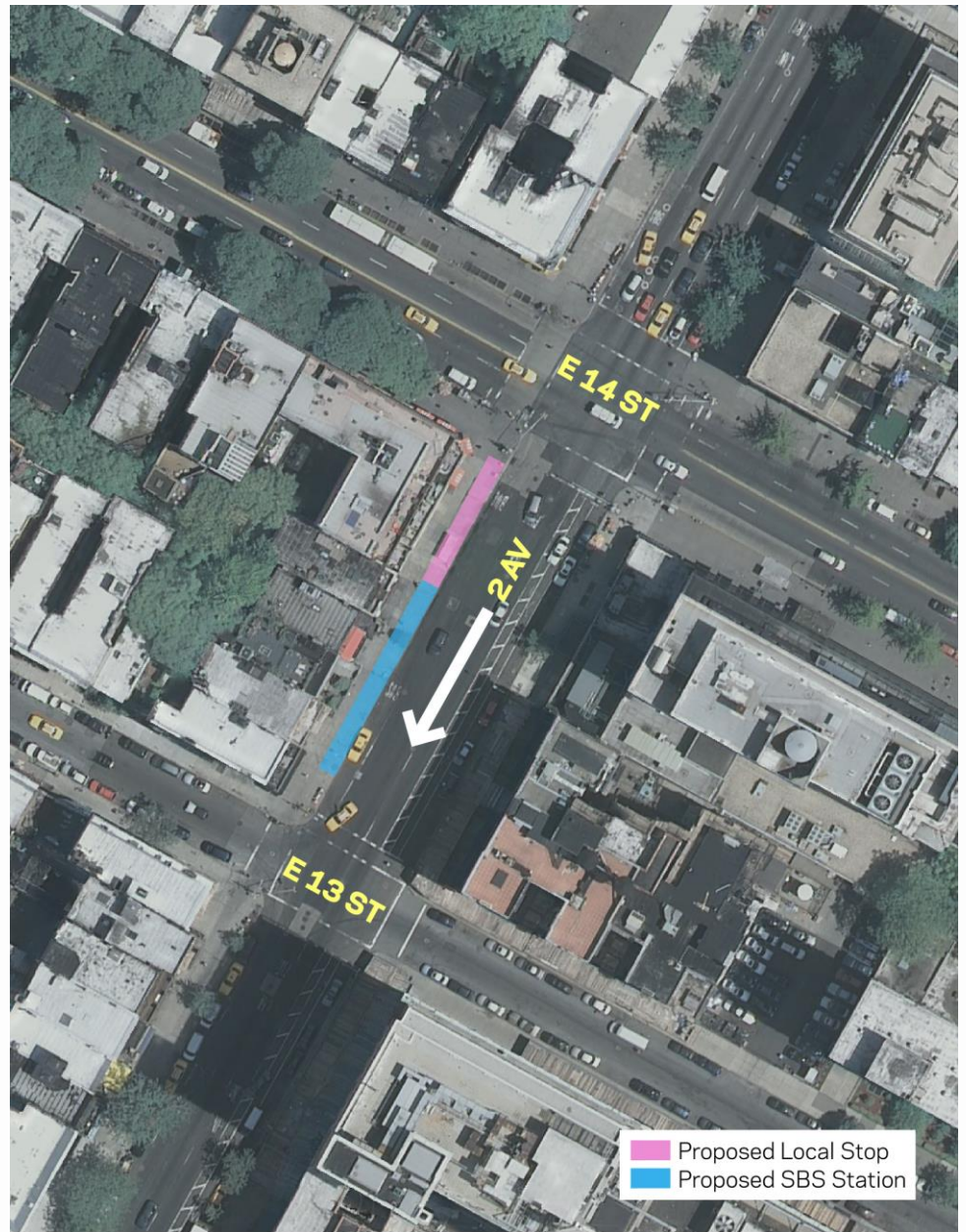
## 14<sup>th</sup> Street/First Avenue (Northbound)

SBS at far side of 14<sup>th</sup> Street, north of local stop



## 14<sup>th</sup> Street/Second Avenue (Southbound)

SBS at far side of 14<sup>th</sup> Street, south of local stop



## Next Steps

### Next meetings

Community Board Meetings - February/March 2010

Public Open Houses - March 2010

Fourth CAC meeting - April 2010

## **Questions and Comments?**