



1200

101

In Service

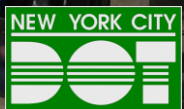


1200

M-66461



New York City Transit



# First Avenue/Second Avenue

## Select Bus Service

Manhattan Community Board 8 Transportation Committee

Thursday, March 11, 2010

## Agenda

Project Overview

Project Schedule

Design Goals

Proposed Design

CB8 Issues

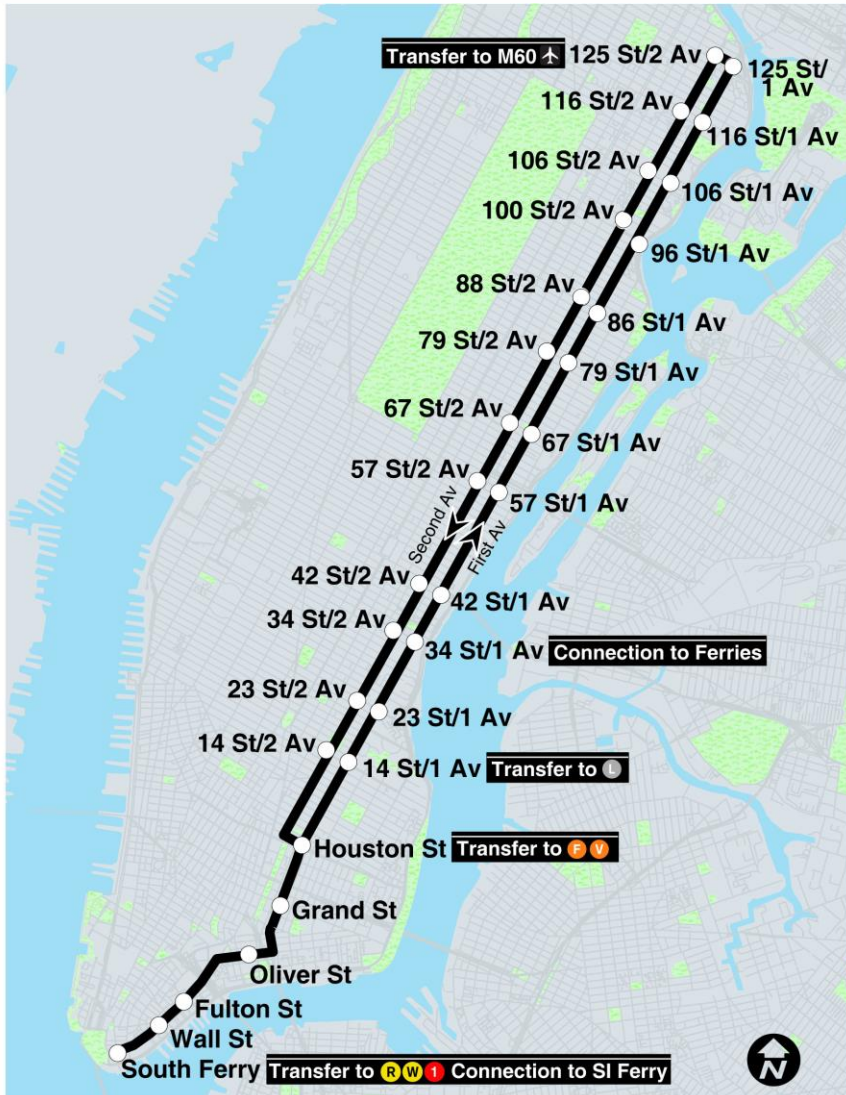
Next Steps

## Phase I BRT Corridors

NYC BRT Study identified First/Second Avenue M15 as a top Bus Rapid Transit corridor in 2006



## About the Corridor



8.5 miles from South Ferry to 125<sup>th</sup> Street

Currently served by M15 bus route

Over 57,000 weekday riders

Bus speeds have been declining

Ridership has been decreasing

Within a ¼ mile:

537,000 residents

78% of households do not own a car

57% of residents commute by transit

## SBS Features

<b>Features</b>	<b>Current M15</b>	<b>M15 SBS (2010)</b>	<b>M15 SBS (2012)</b>
Local service	Yes	Yes	Yes
Limited service	Yes	No	No
Simpler service pattern	No	Yes	
Off-board fare collection	No	Yes	
Regular bus fare	Yes	Yes	
Improved bus lanes	No	Yes	
Low-floor, three-door articulated buses	No	Yes	
Bus bulbs	No	No	Yes
Transit Signal Priority	No	No	Yes (below Houston St)

## Public Outreach

### Community Advisory Committee

Composed of:

Elected Officials

Community Organizations

Community Boards

Business Representatives

Major Institutions

Transit Customers

Meetings in May 2009, September 2009, January 2010

### Community Board Meetings

Board 1 meeting: December 2009

Meetings with Boards 3, 6, 8 and 11: February/March 2010

### Public Open Houses

March 18 and 24, 2010

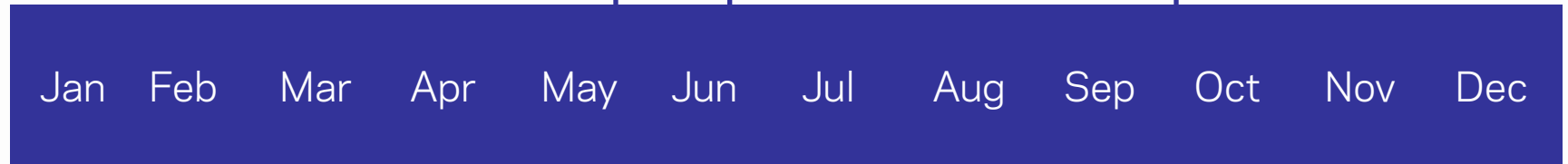
## 2009 Schedule

### Outreach

CAC meeting #1

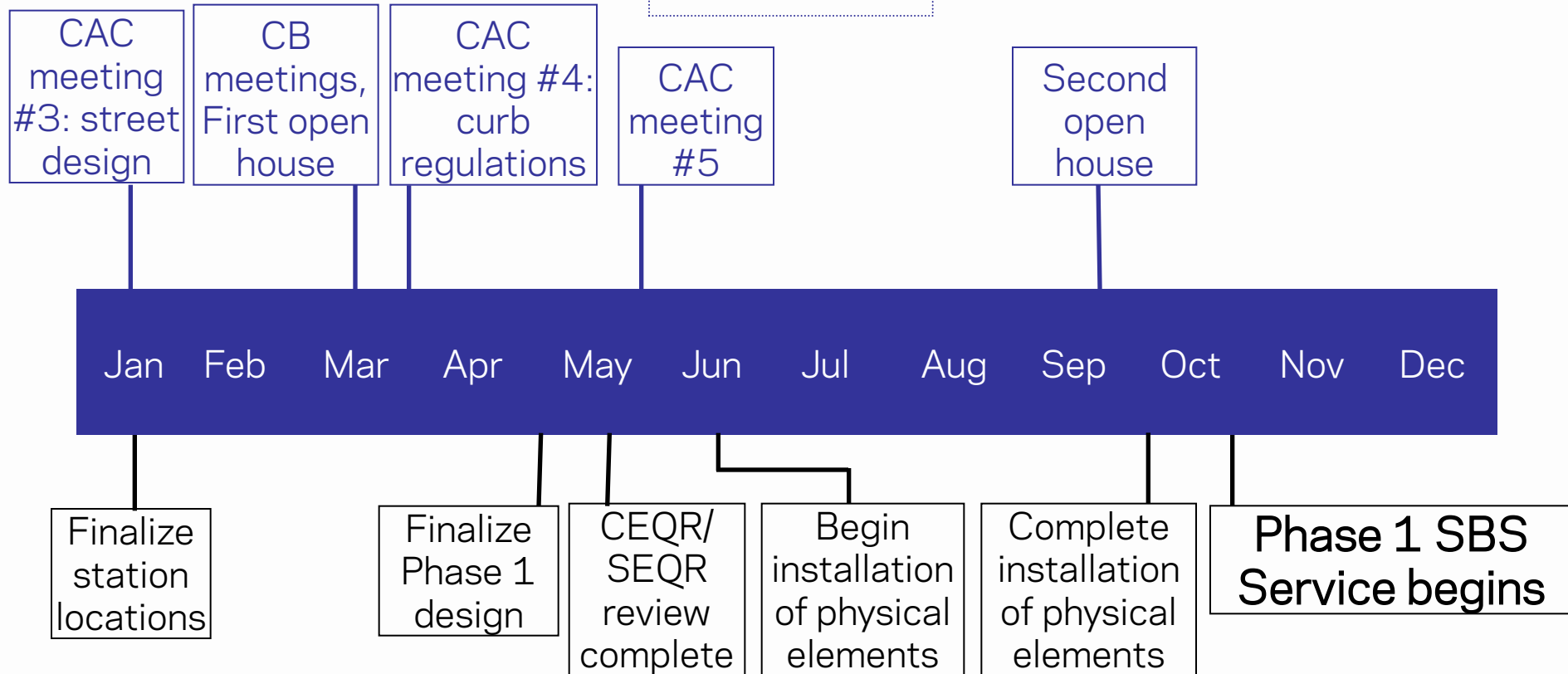
Fordham Rd SBS CAC tour

CAC meeting #2: Station locations



## 2010 Schedule

### Outreach



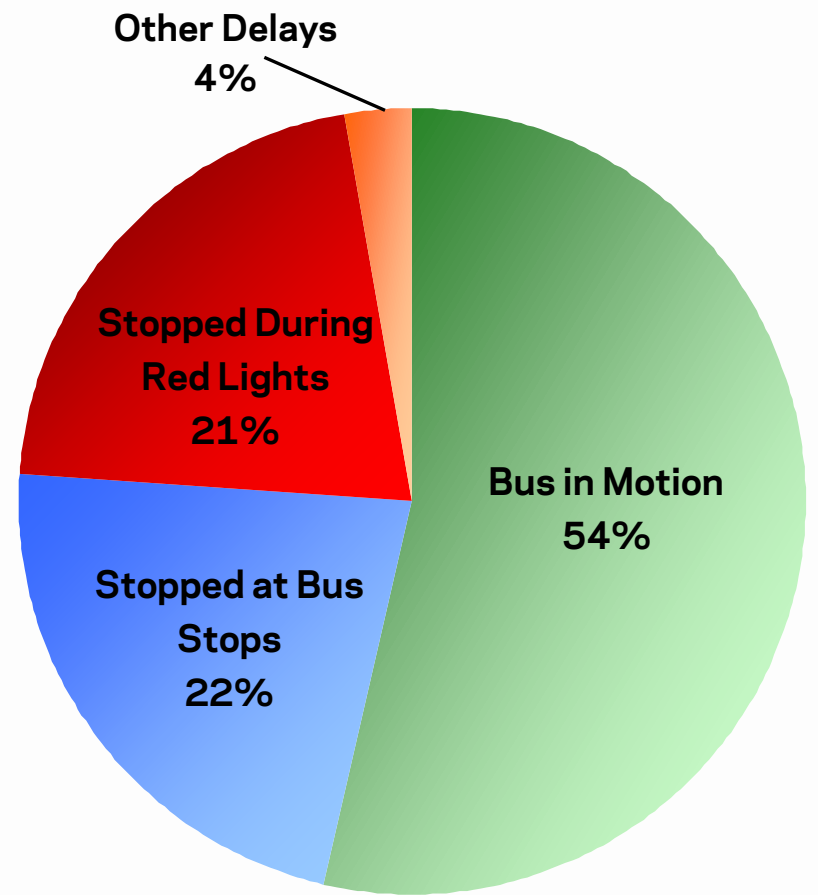
### Project Milestones



## Design Goals

**Improve bus service**

**Sources of delay on M15 Limited**



## Fordham Road Select Bus Service

### Features:

Curbside Bus Lane

Off-Board Fare Collection

Transit Signal Priority

### Results:

Travel Time: 20% reduction  
in running time

Ridership: 10% increase  
from October 2007 to  
October 2008

Customer Satisfaction:  
98% satisfied or very  
satisfied



## Design Goals

Improve bus service

**Improve pedestrian safety**

Pedestrian safety data, 2006-2008

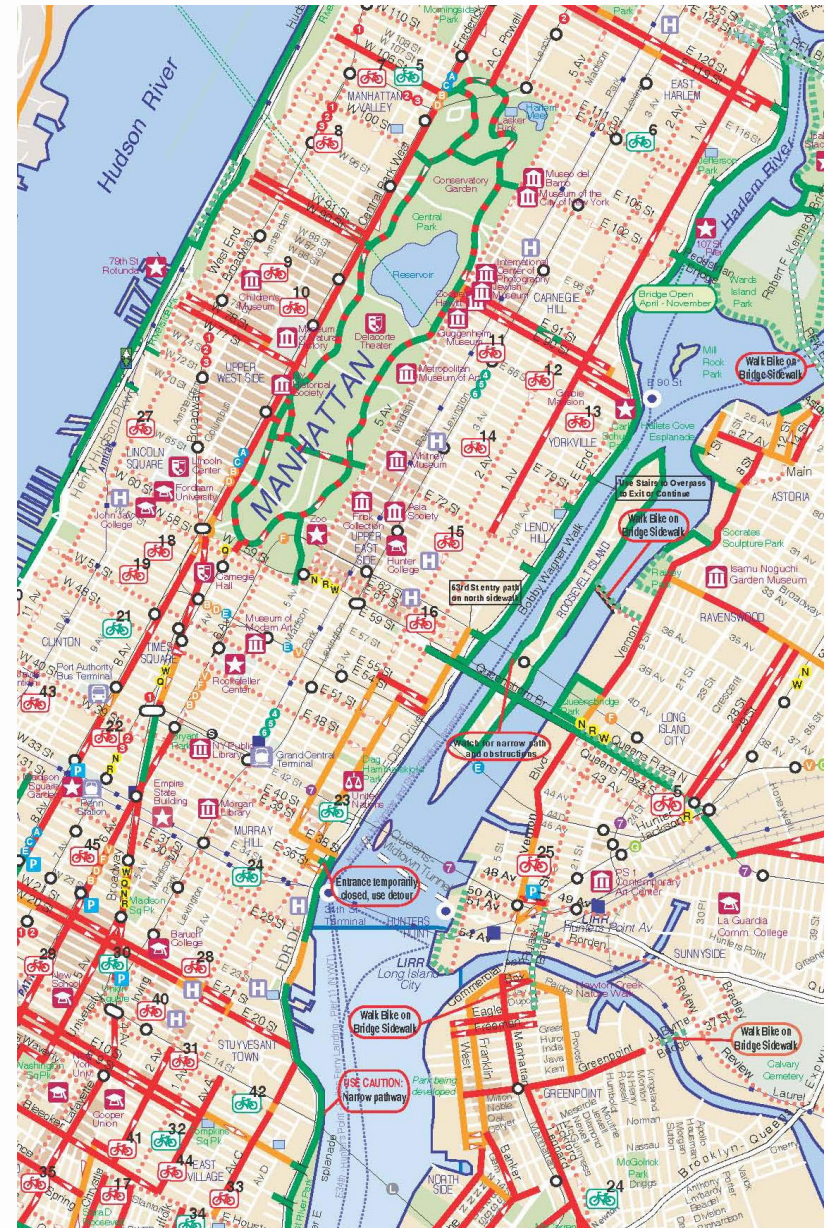
	Pedestrian fatalities	Pedestrian crashes
First Avenue	7	538
Second Avenue	4	597

## Design Goals

Improve bus service

Improve pedestrian safety

**Improve bicycle access on the East Side**



## Protected Bicycle Paths and Pedestrian Improvements



### Features:

- Physically separated right-of-way
- Pedestrian refuge islands
- Floating Parking
- Trees and plantings

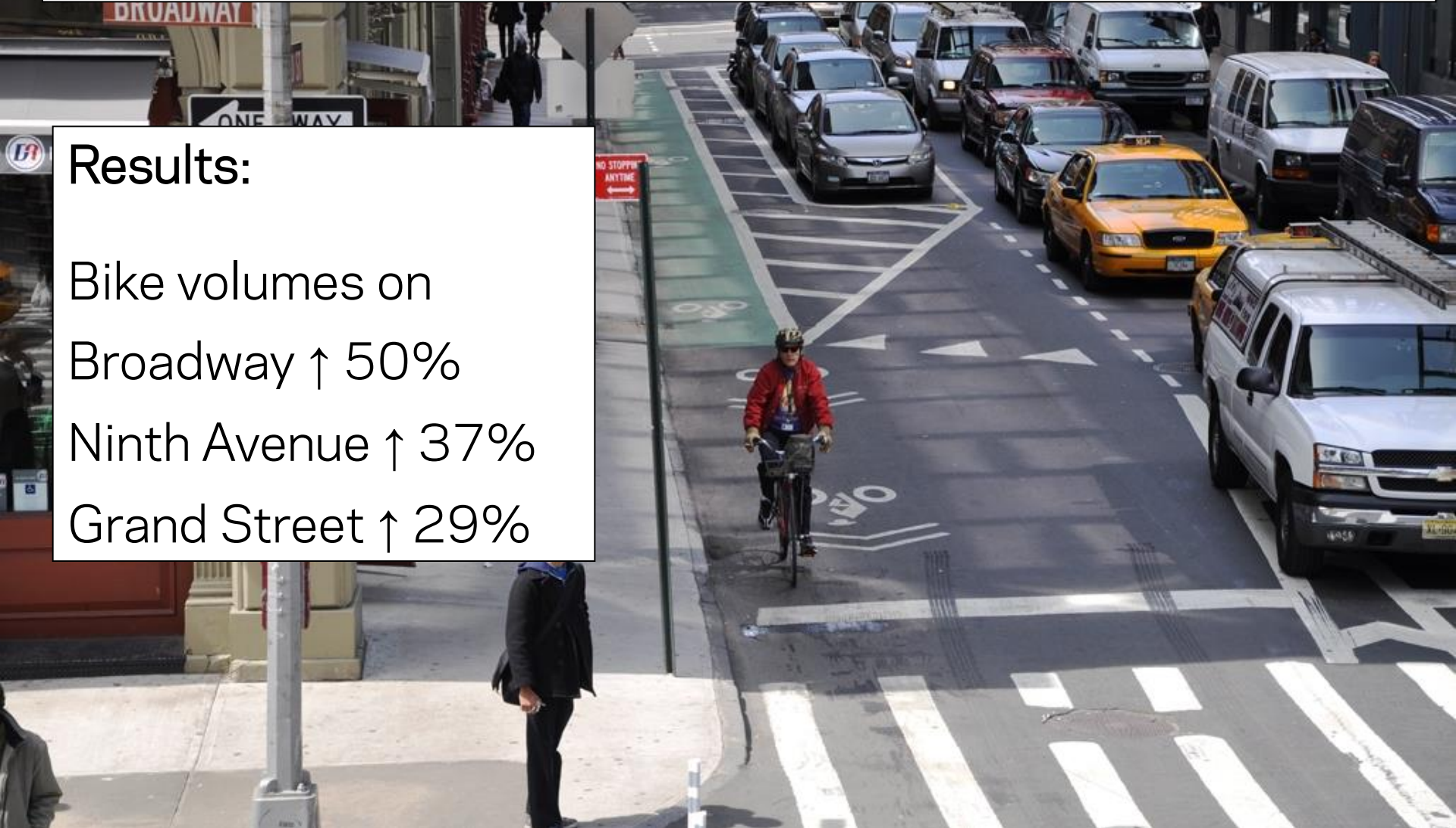
### Results:

- Pedestrian injuries on Broadway: ↓ 40%
- Ninth Avenue: ↓ 29%
- Grand Street: ↓ 28%

## Protected Bicycle Paths and Pedestrian Improvements

### Results:

Bike volumes on  
Broadway ↑ 50%  
Ninth Avenue ↑ 37%  
Grand Street ↑ 29%



## Design Goals

Improve bus service

Improve pedestrian safety

Improve bicycle access on the East Side

Maintain traffic flow

Allow curb access for deliveries, dropoffs and short-term parking

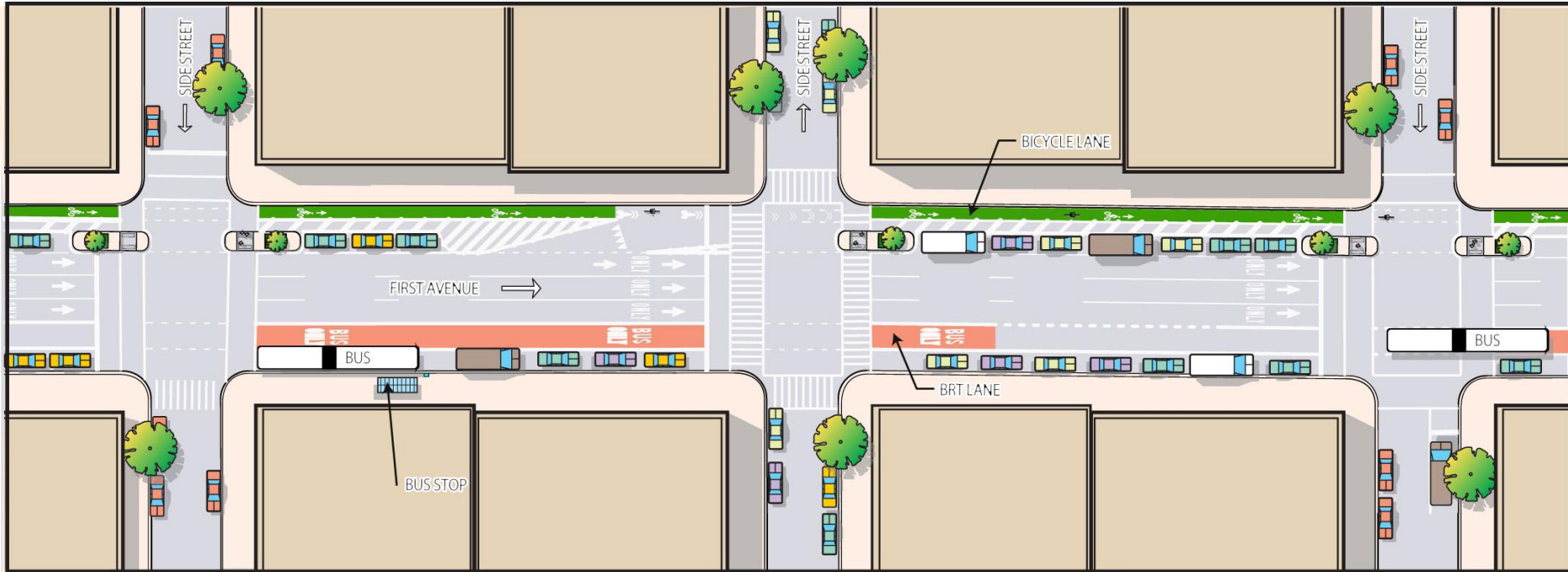
# First Avenue/Second Avenue SBS

## Design A





## Design A



# First Avenue/Second Avenue SBS

## Design A



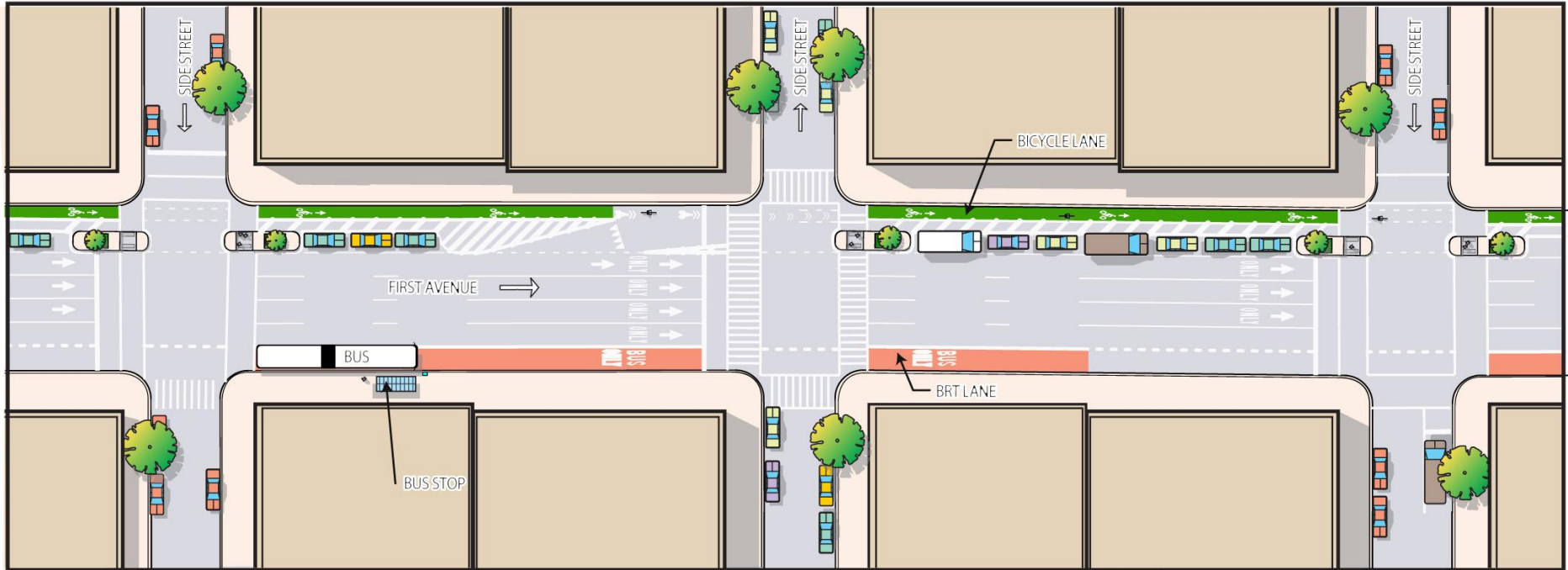
## Design A with bus bulb



## Design B



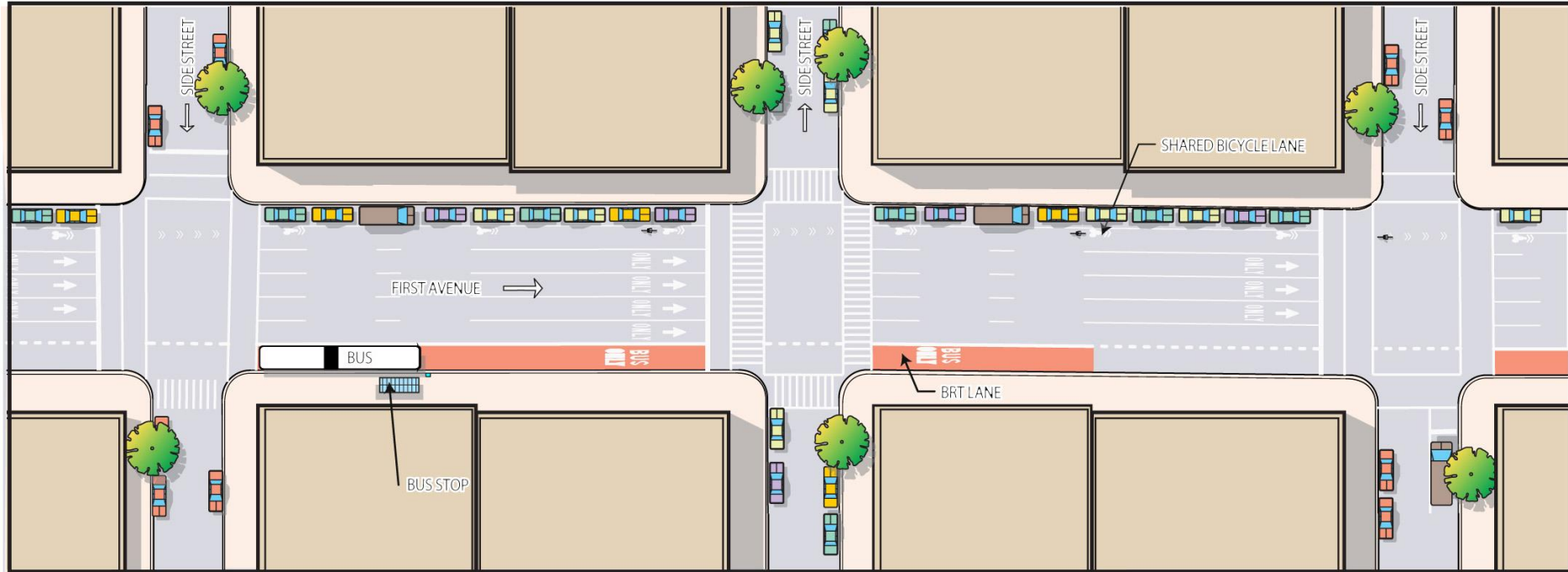
## Design B



## Design C

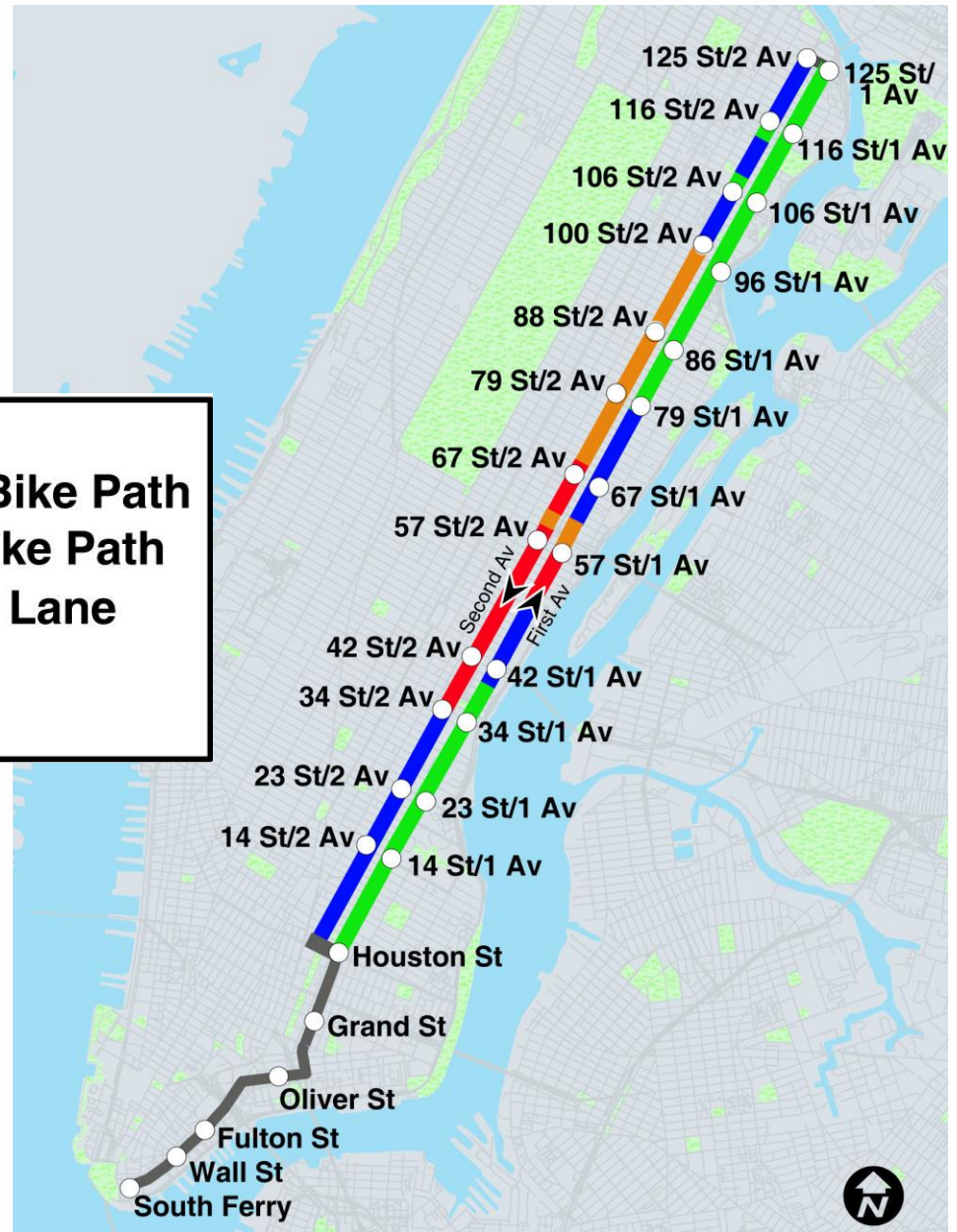


## Design C



## Corridor Map

- SBS Station
- A: Offset Bus Lane, Protected Bike Path
- B: Curb Bus Lane, Protected Bike Path
- C: Curb Bus Lane, Shared Bike Lane
- No change to street design
- Construction Zone





## Corridor Map

### First Avenue

#### Design A:

Houston St to 40<sup>th</sup> St

79<sup>th</sup> St to 125<sup>th</sup> St

#### Design B:

40<sup>th</sup> St to 49<sup>th</sup> St

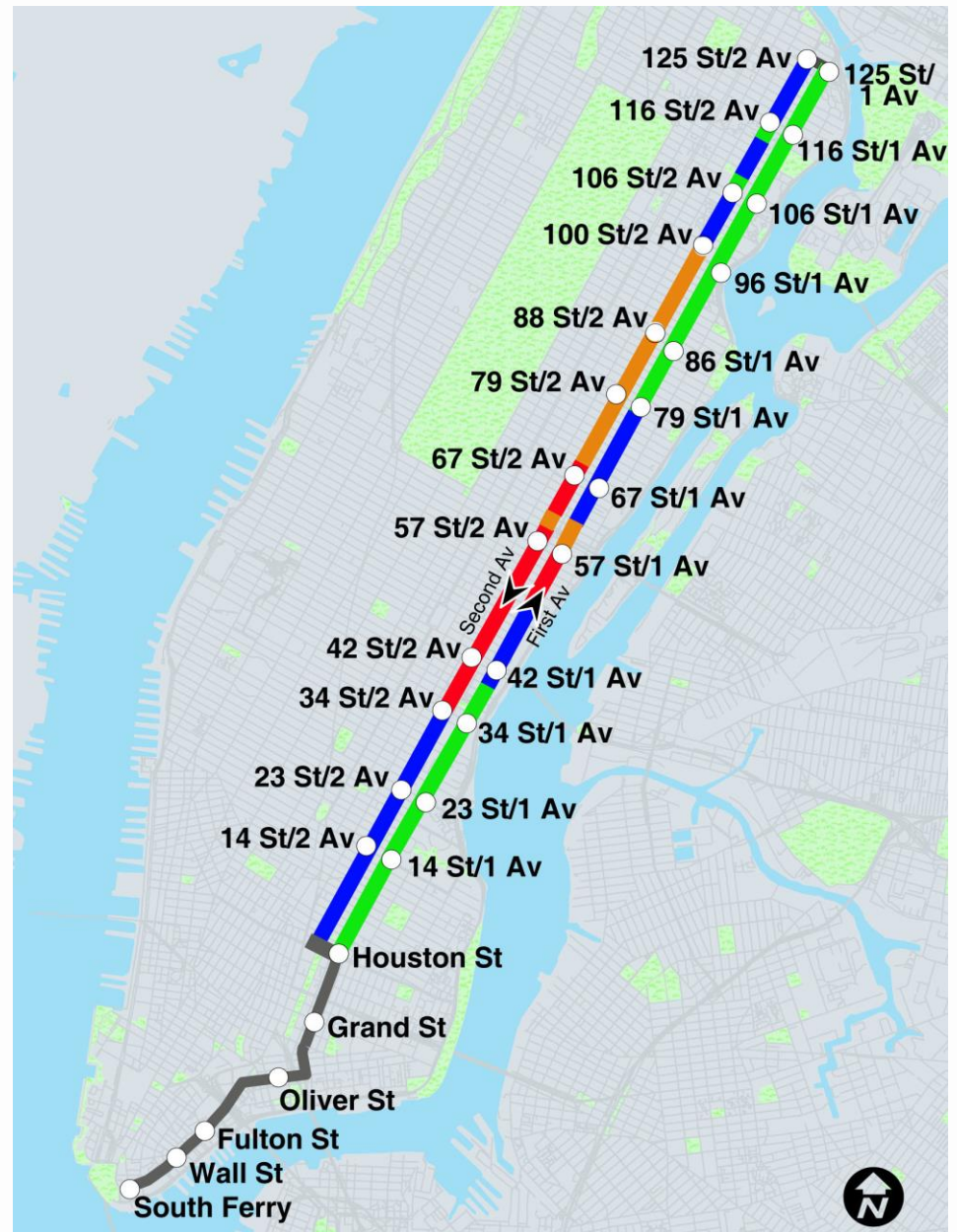
61<sup>st</sup> St to 79<sup>th</sup> St

#### Design C:

49<sup>th</sup> St to 57<sup>th</sup> St

#### Construction Zone:

57<sup>th</sup> St to 61<sup>st</sup> St



## Corridor Map

### Second Avenue

#### Design A:

115<sup>th</sup> St to 113<sup>th</sup> St

108<sup>th</sup> St to 106<sup>th</sup> St

#### Design B:

125<sup>th</sup> St to 115<sup>th</sup> St

113<sup>th</sup> St to 108<sup>th</sup> St

106<sup>th</sup> St to 100<sup>th</sup> St

34<sup>th</sup> St to Houston St

#### Design C:

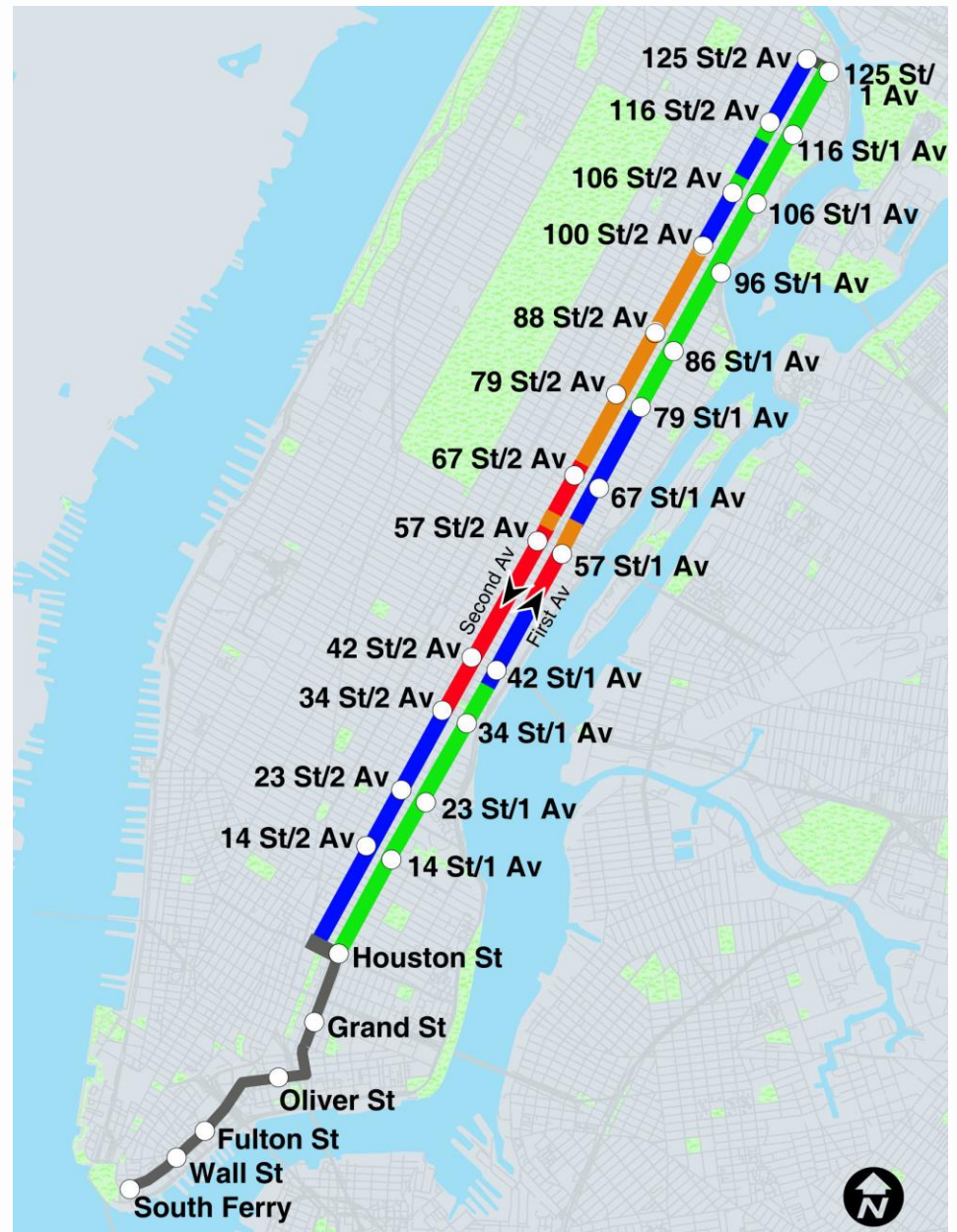
68<sup>th</sup> St to 61<sup>st</sup> St

59<sup>th</sup> St to 34<sup>th</sup> St

#### Construction Zone:

100<sup>th</sup> St to 68<sup>th</sup> St

61<sup>st</sup> St to 59<sup>th</sup> St



# First Avenue/Second Avenue SBS

## Community Board 8

### SAS Construction



### Design A



### Design B



### Design C

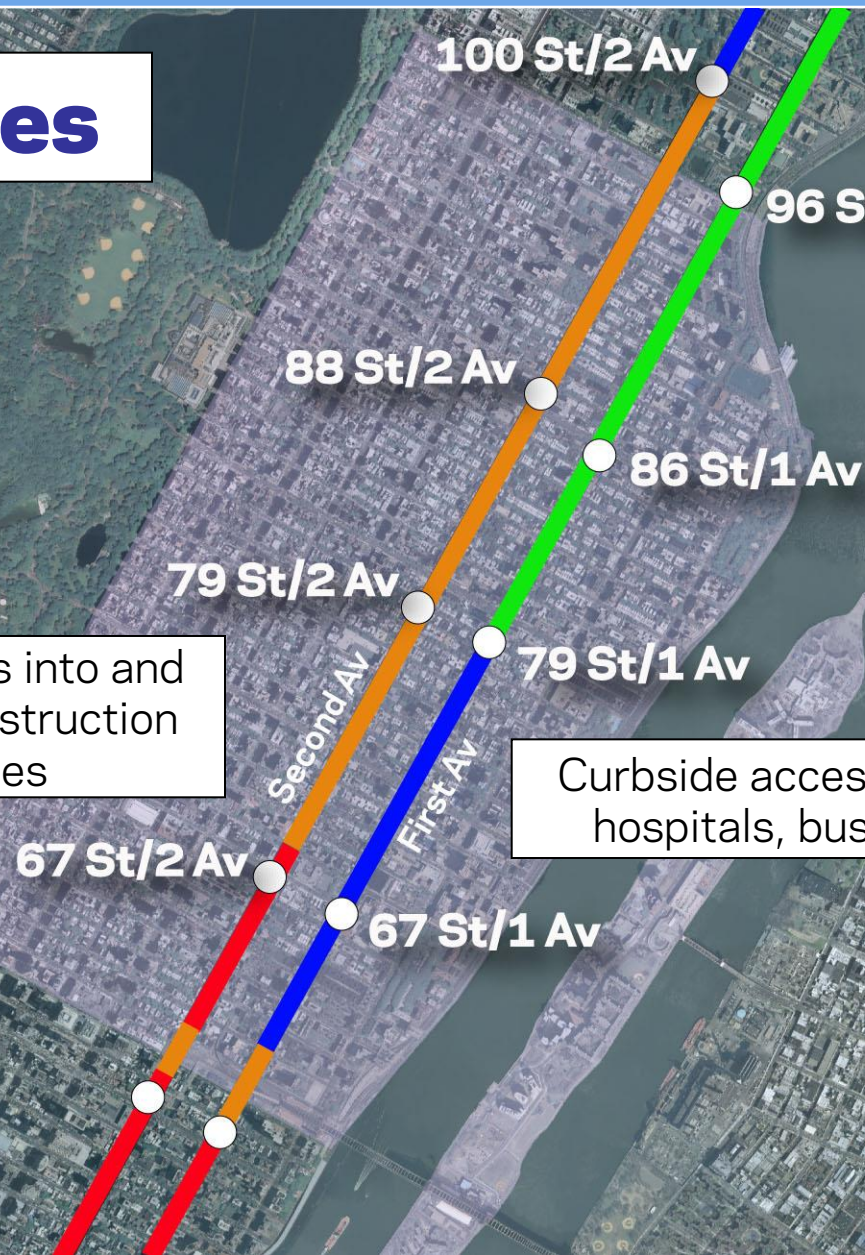


# First Avenue/Second Avenue SBS

## CB8 Issues

Transitions into and out of construction zones

Curbside access for area hospitals, businesses



## Second Avenue Subway construction

### During Construction

NYCT and DOT are working with SAS team to:

- Eliminate SBS station/routing conflicts

- Ensure inclusion of SBS elements in service restoration

No planned changes to street design in construction zone (East 100th to East 68th Streets)



# CB8 Station Locations

# First Avenue/Second Avenue SBS

## 67<sup>th</sup> Street/First Avenue (Northbound)

SBS at near side of 68<sup>th</sup>  
Street

Local between 66<sup>th</sup> and 67<sup>th</sup>  
Streets



## 79<sup>th</sup> Street/First Avenue (Northbound)

SBS south of local between  
79<sup>th</sup> and 80<sup>th</sup> Streets



Proposed Local Stop  
Proposed SBS Station



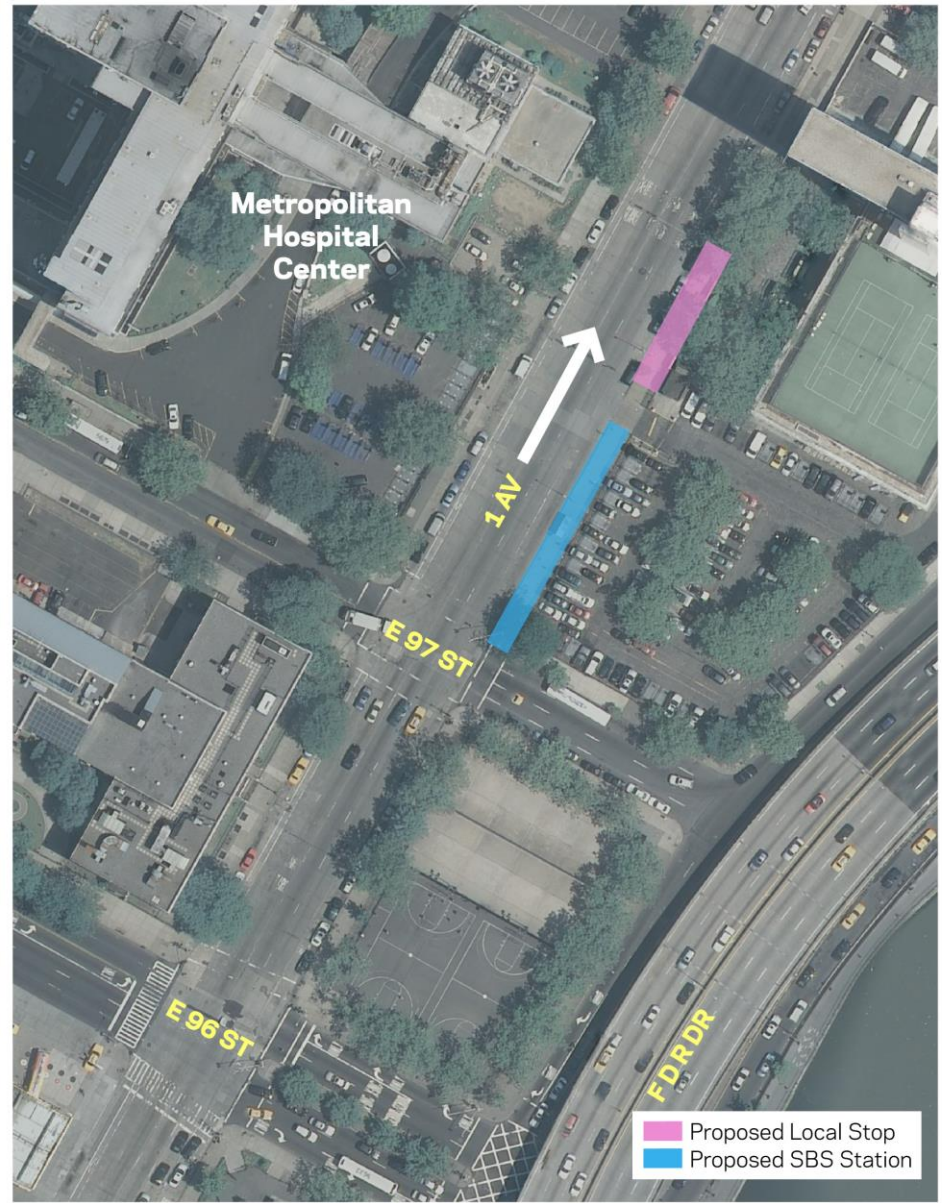
## 86<sup>th</sup> Street/First Avenue (Northbound)

SBS north of local between  
86<sup>th</sup> and 87<sup>th</sup> Streets



## 96<sup>th</sup> Street/First Avenue (Northbound)

SBS south of local north of  
97<sup>th</sup> Street

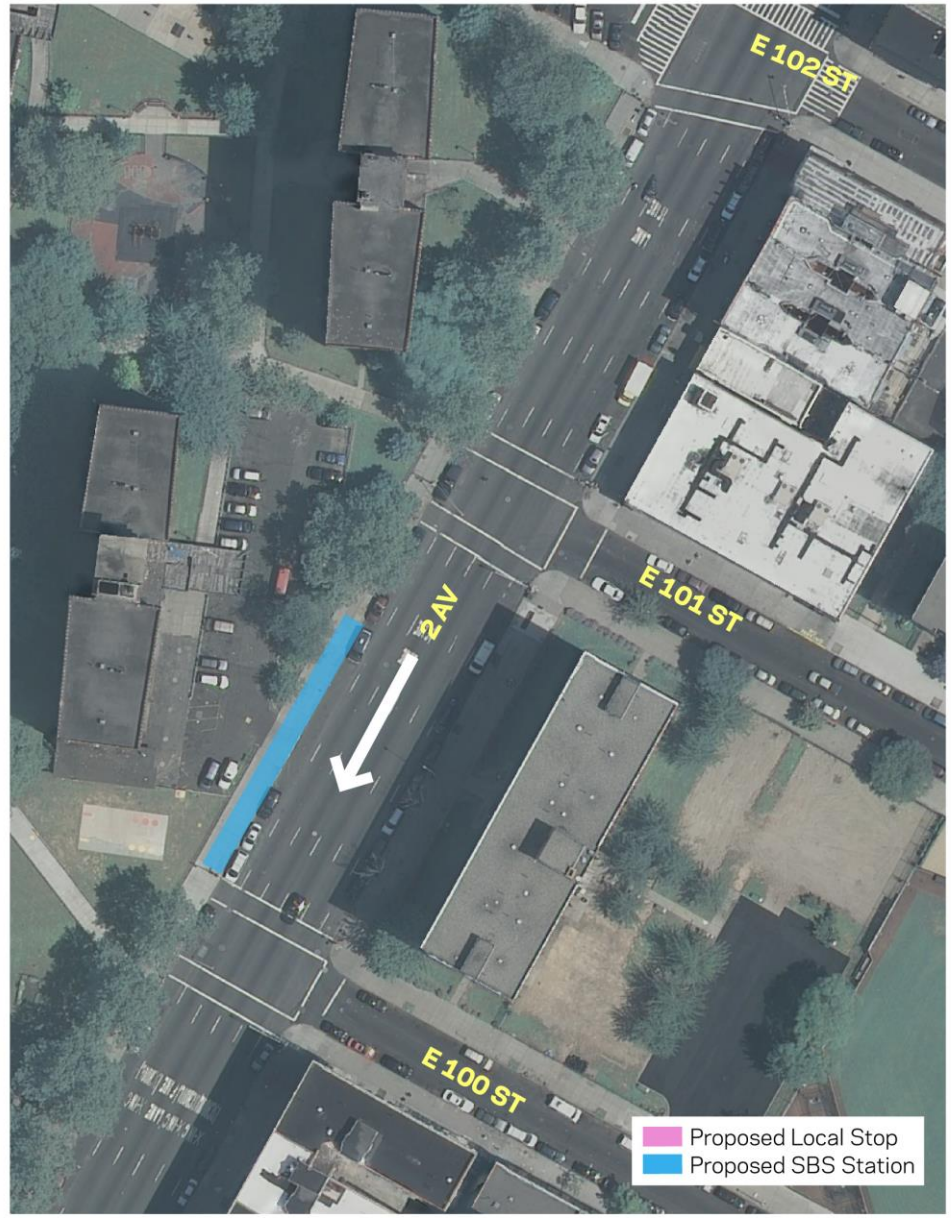


# First Avenue/Second Avenue SBS

## 100<sup>th</sup> Street/Second Avenue (Southbound)

SBS between 101<sup>st</sup> and 100<sup>th</sup> Streets

Location during Second Avenue Subway construction



## 88<sup>th</sup> Street/First Avenue (Southbound)

SBS south of local between  
89<sup>th</sup> and 88<sup>th</sup> Streets



## 79<sup>th</sup> Street/First Avenue (Southbound)

SBS north of local between  
79<sup>th</sup> and 78<sup>th</sup> Streets

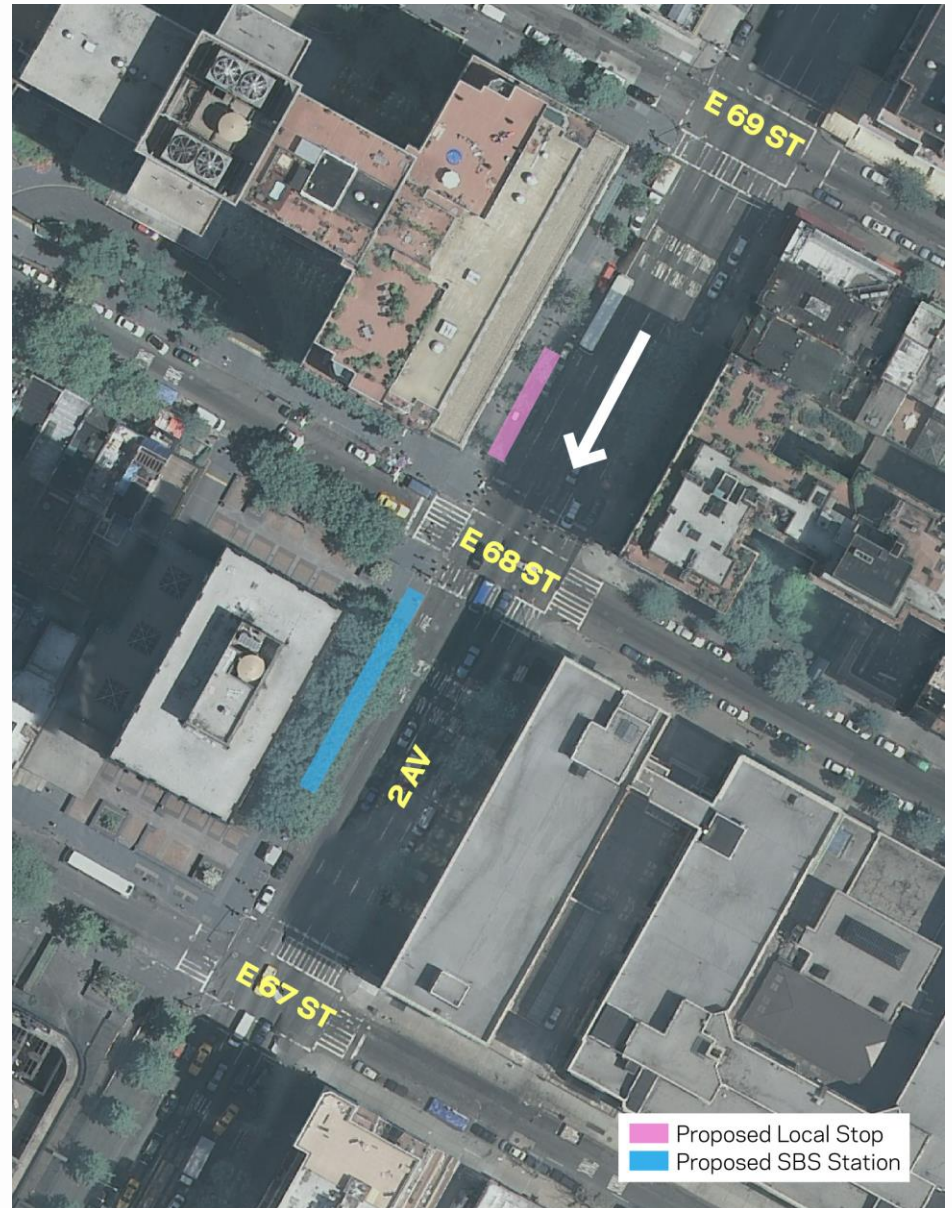


# First Avenue/Second Avenue SBS

## 67<sup>th</sup> Street/First Avenue (Southbound)

SBS at far side of 68<sup>th</sup> Street

Local at near side of 68<sup>th</sup>  
Street



## Next Steps

### Next meetings

Community Board Meetings - February/March 2010

Public Open Houses - March 2010

Fourth CAC meeting - April 2010

## Questions and Comments?