

# Queens CB 2 Network



Commissioner Janette Sadik-Khan New York City Department of Transportation  
Presented October 15, 2013 to Queens Community Board 2 Transportation Committee



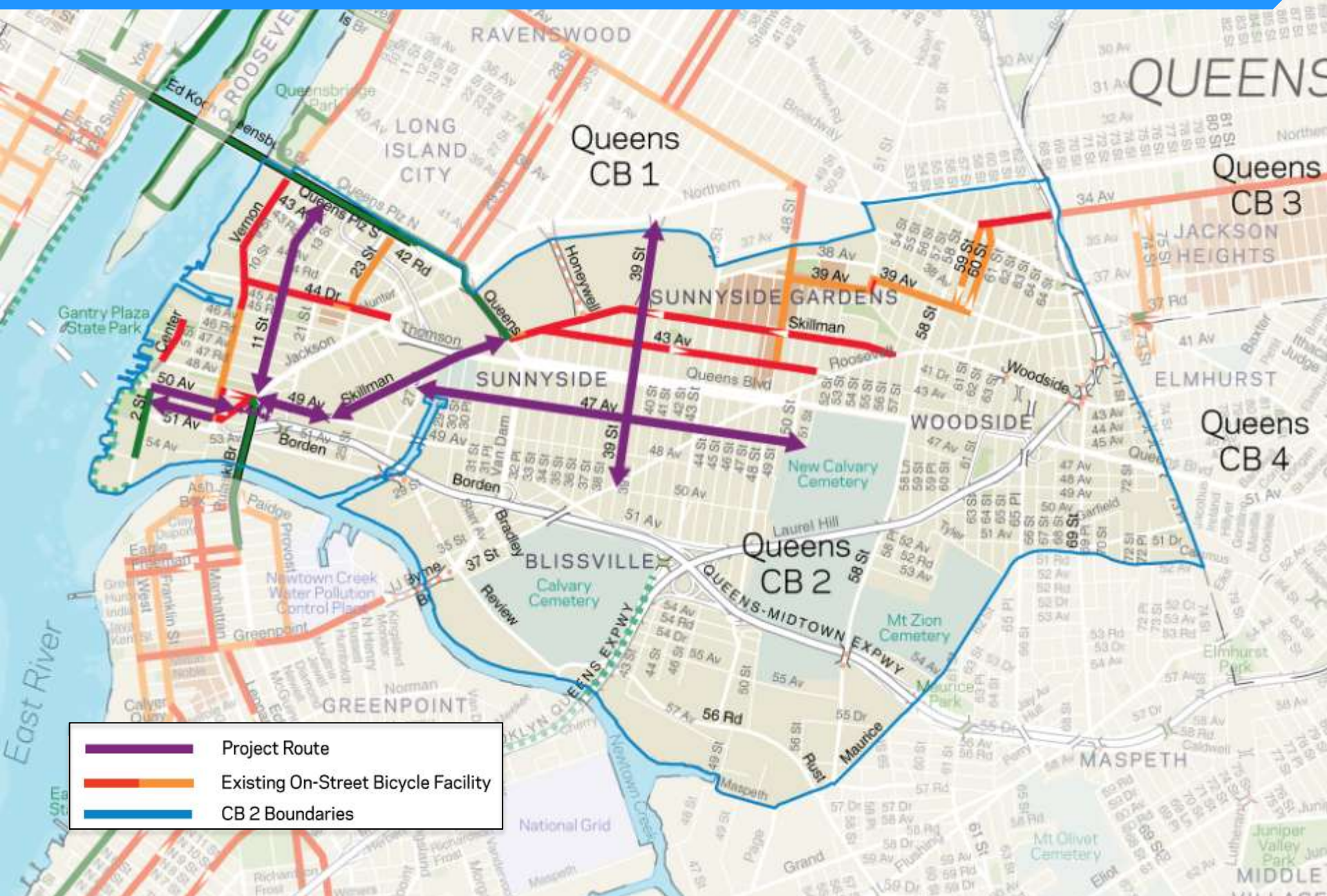
# Project Background




- CB2 Requested Community Planning Process
  - Community Route Identification
    - Bike Forum, March & July 2012
  - Evaluation of Routes
  - Development of Project Priorities and Phasing
  - Presentation to CB 2 Transportation Committee June 2013





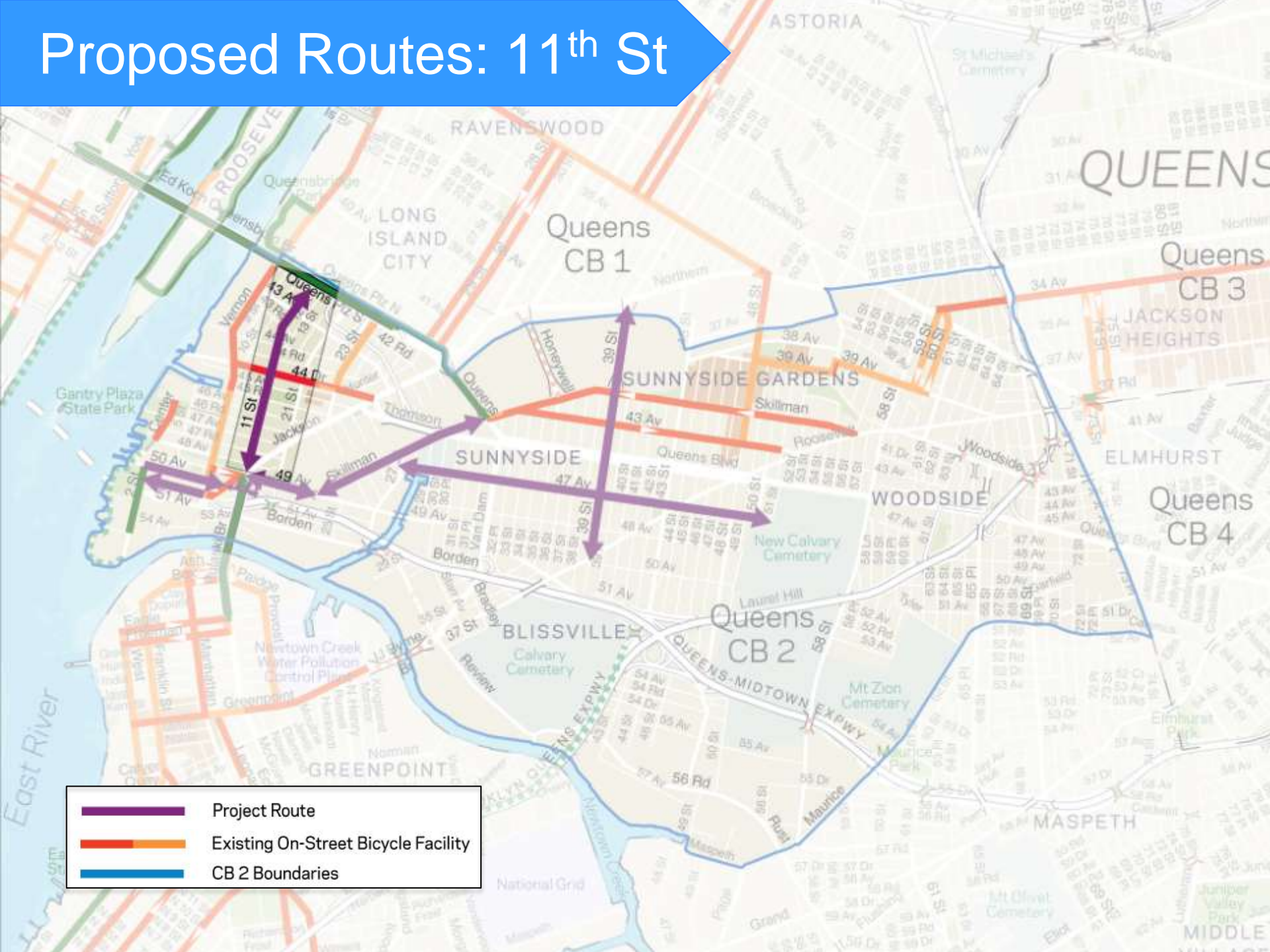
# Routes Recommended for 2014 Implementation



-  Project Route
-  Existing On-Street Bicycle Facility
-  CB 2 Boundaries



# Proposed Routes: 11<sup>th</sup> St



# Existing Conditions: 11<sup>th</sup> St



11<sup>th</sup> St Looking North at 46<sup>th</sup> St



# Proposed Facilities: 11<sup>th</sup> St

Enhanced Shared Lane



Proposed for 11<sup>th</sup> St between 44<sup>th</sup> Dr and 49 Av

# Existing Conditions: 11<sup>th</sup> St



# Proposed Facilities: 11<sup>th</sup> St

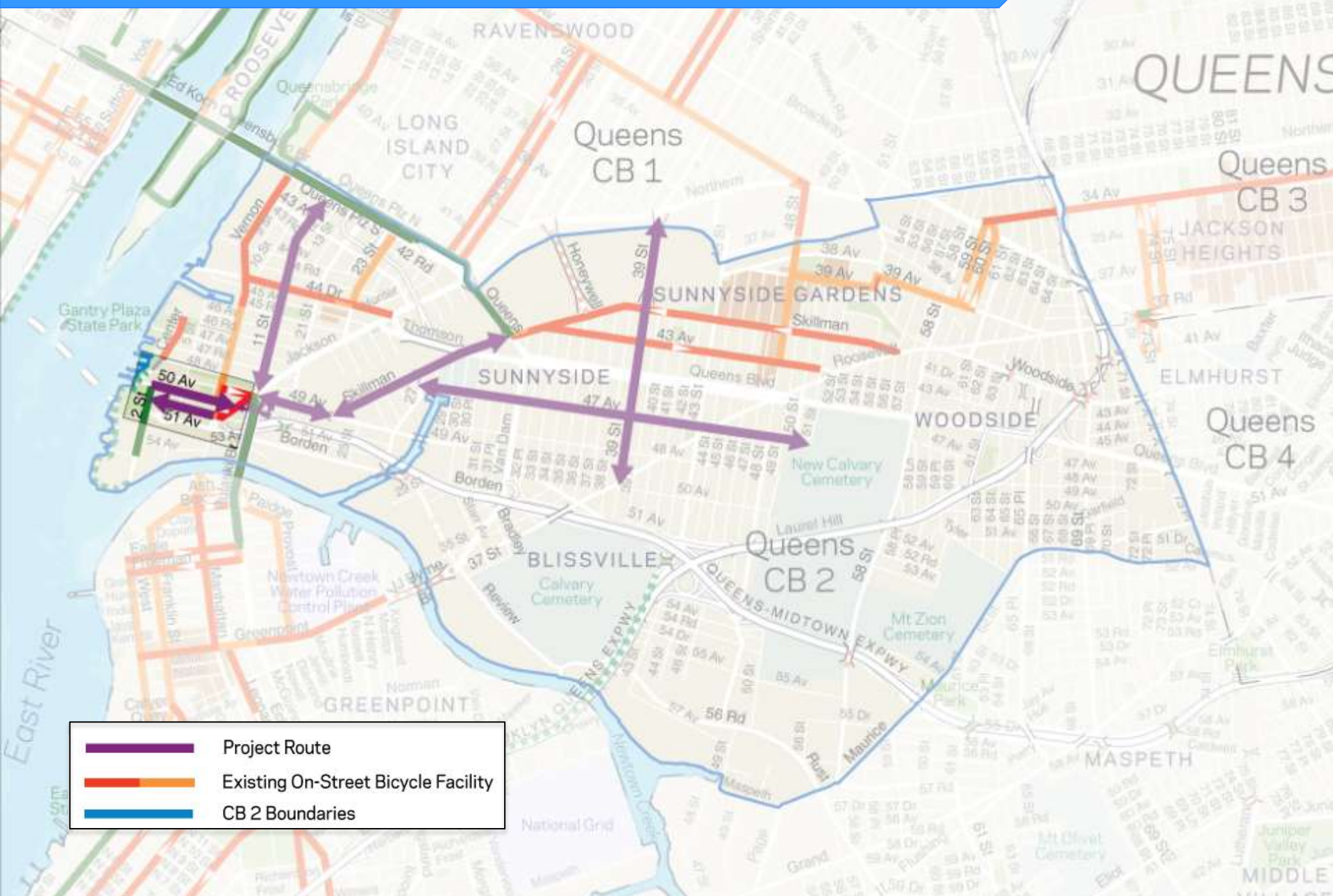
Shared Lane






Proposed for 11<sup>th</sup> St between 44 Dr and Queens Plaza South



# Proposed Routes: 50<sup>th</sup> Av & 51<sup>st</sup> Av



-  Project Route
-  Existing On-Street Bicycle Facility
-  CB 2 Boundaries



# Existing Conditions: 50<sup>th</sup> Av & 51<sup>st</sup> Av





# Proposed Facilities: 50<sup>th</sup> Av & 51<sup>st</sup> Av

Shared Lane



Proposed for 50<sup>th</sup> Av



# Existing Conditions: 50<sup>th</sup> Av & 51<sup>st</sup> Av





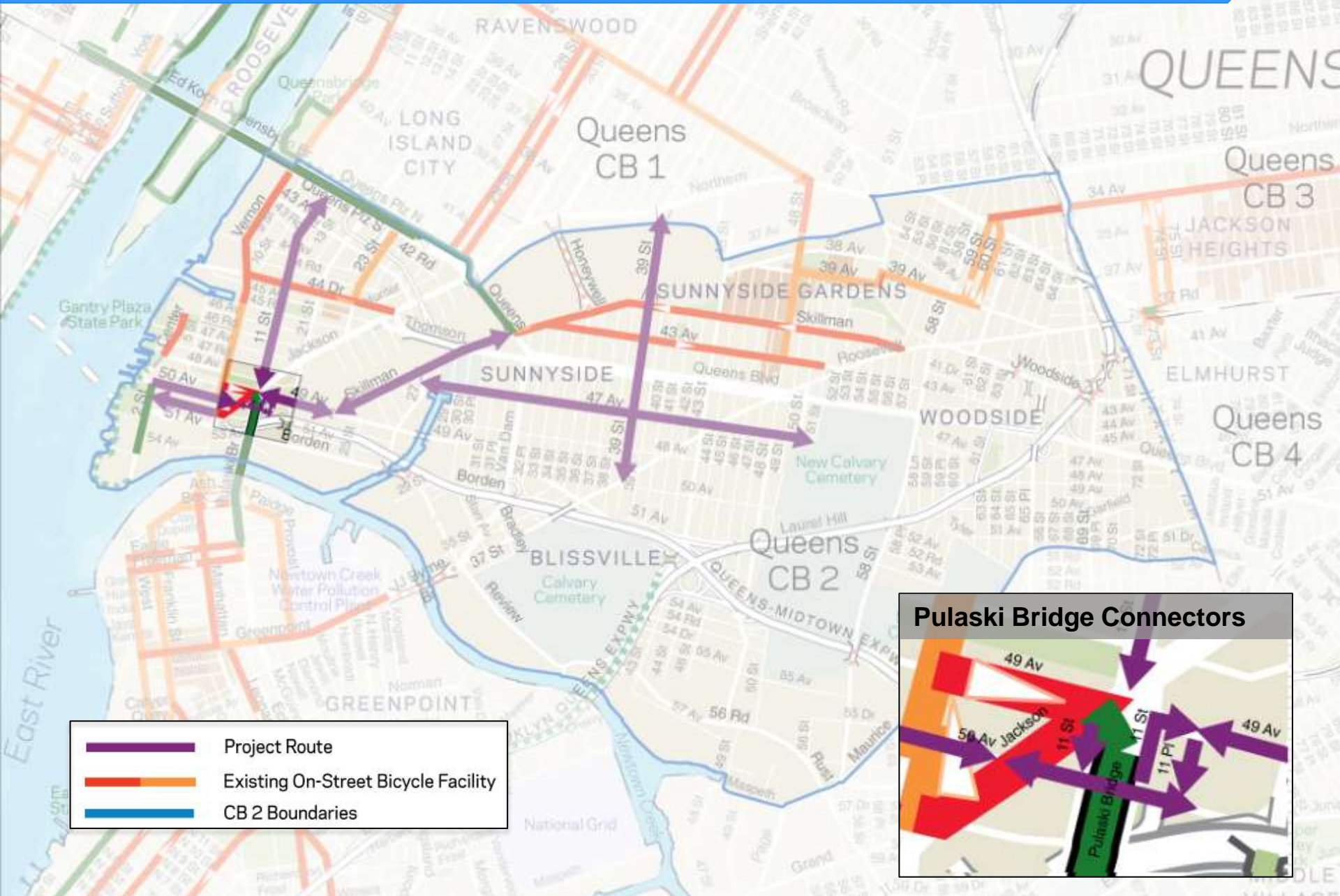
# Proposed Facilities: 50<sup>th</sup> Av & 51<sup>st</sup> Av

Bike Lane



Proposed for 51<sup>st</sup> Av

# Proposed Routes: Pulaski Bridge Connectors





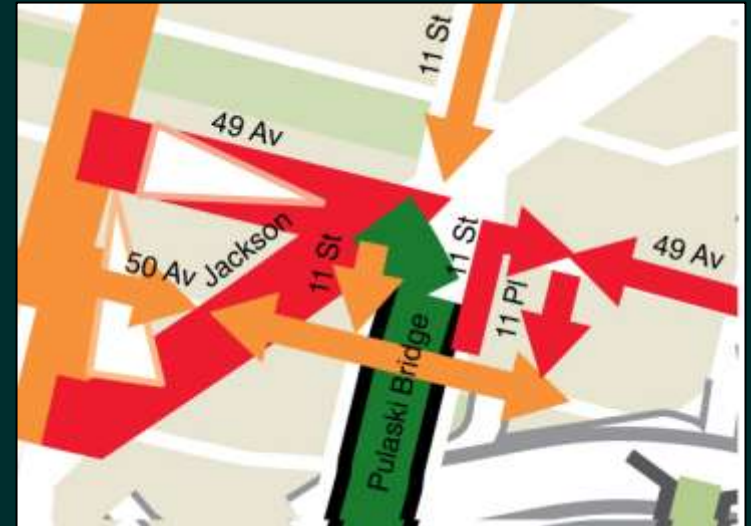
# Existing Conditions: Pulaski Bridge Connectors



11<sup>th</sup> St Southbound

# Proposed Facilities: Pulaski Bridge Connectors

Shared Lane



Proposed for 11<sup>th</sup> St (southbound)

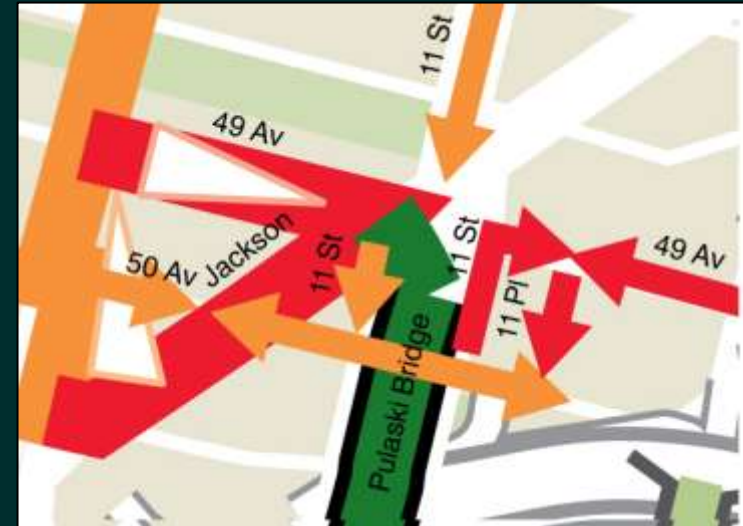


# Existing Conditions: Pulaski Bridge Connectors



# Proposed Facilities: Pulaski Bridge Connectors

Bike Lane



Proposed for 11<sup>th</sup> St (northbound) and 11<sup>th</sup> Pl





# Existing Conditions: 49<sup>th</sup> Av & Skillman Av





# Proposed Facilities: 49<sup>th</sup> Av & Skillman Av

Buffered Bike Lane



Proposed for western section of 49<sup>th</sup> Av between Skillman Av and 11<sup>th</sup> Pl

# Existing Conditions: 49<sup>th</sup> Av & Skillman Av





# Proposed Facilities: 49<sup>th</sup> Av & Skillman Av

Bike Lane



Proposed for eastern section of 49<sup>th</sup> Av between Skillman Av and 11<sup>th</sup> Pl

# Existing Conditions: 49<sup>th</sup> Av & Skillman Av



10'-8"  
CLEARANCE

Skillman Ave between 49<sup>th</sup> Av and Pearson PI



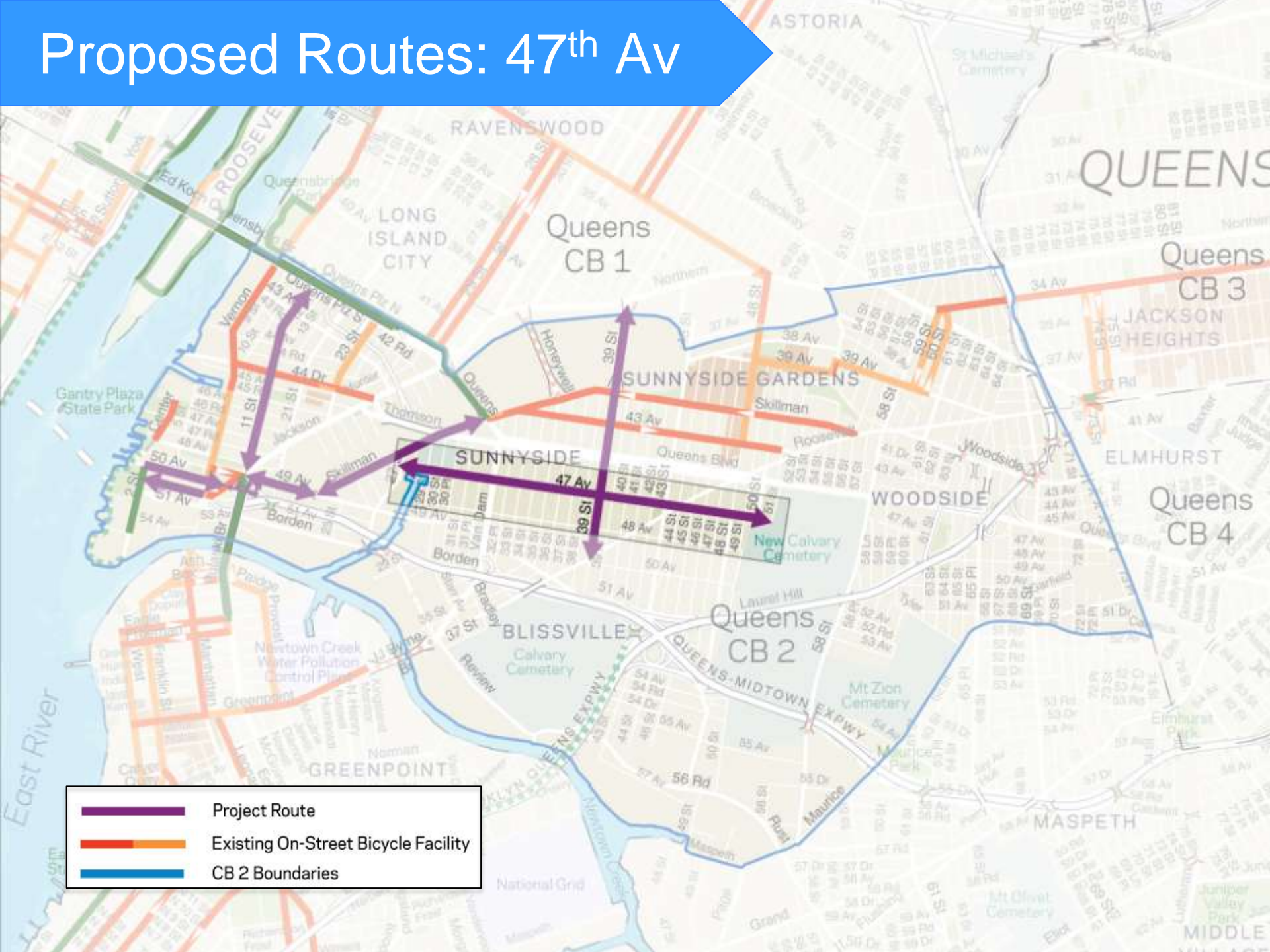
# Proposed Facilities: 49<sup>th</sup> Av & Skillman Av

Shared Lane



Proposed for Skillman Ave between Queens Blvd and 29<sup>th</sup> Av

# Proposed Routes: 47<sup>th</sup> Av





# Proposed Routes: 47<sup>th</sup> Av



47 Ave at 36 St

# Proposed Facilities: 47<sup>th</sup> Av

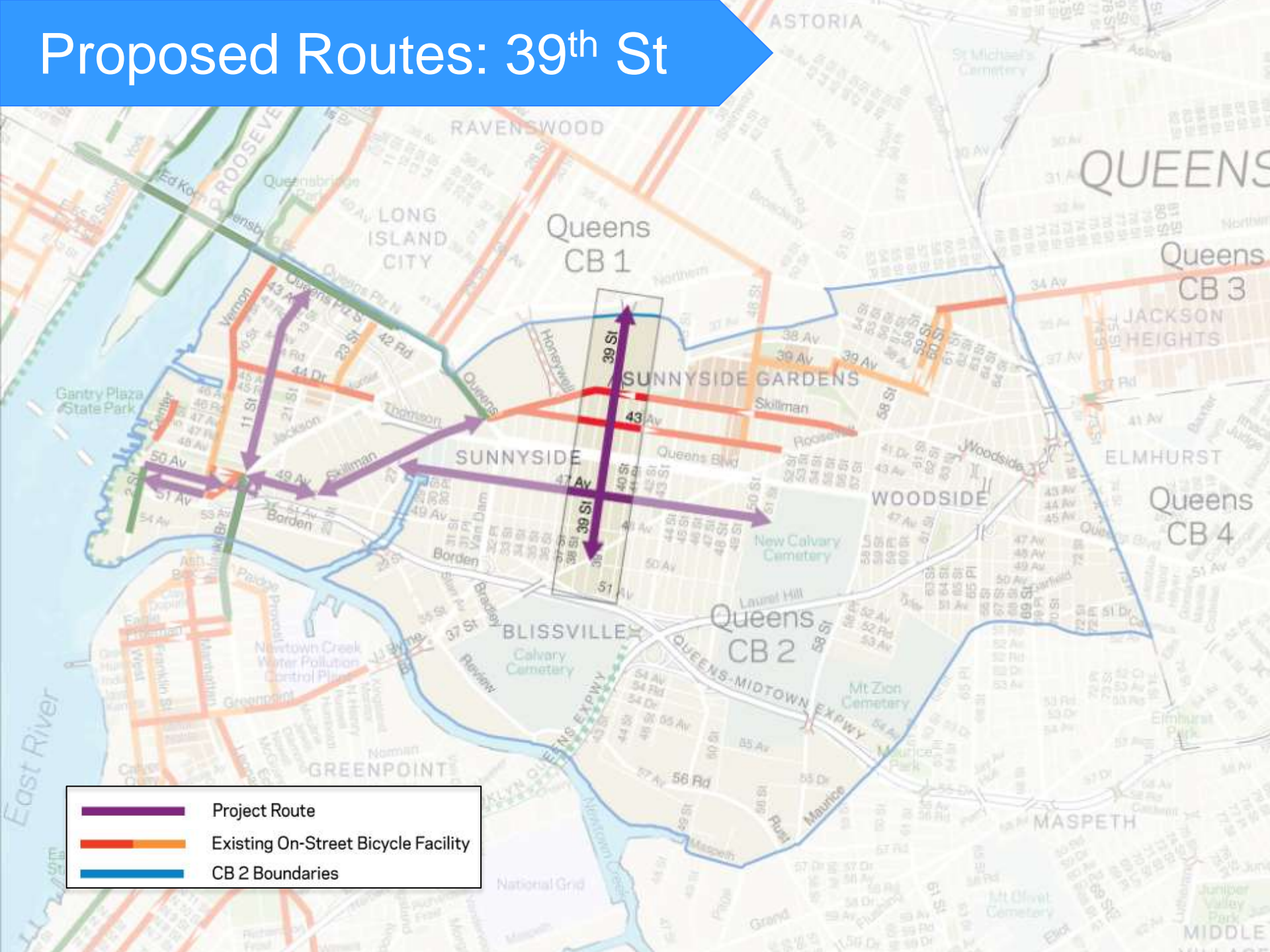
Shared Lane






Proposed for 47<sup>th</sup> Av

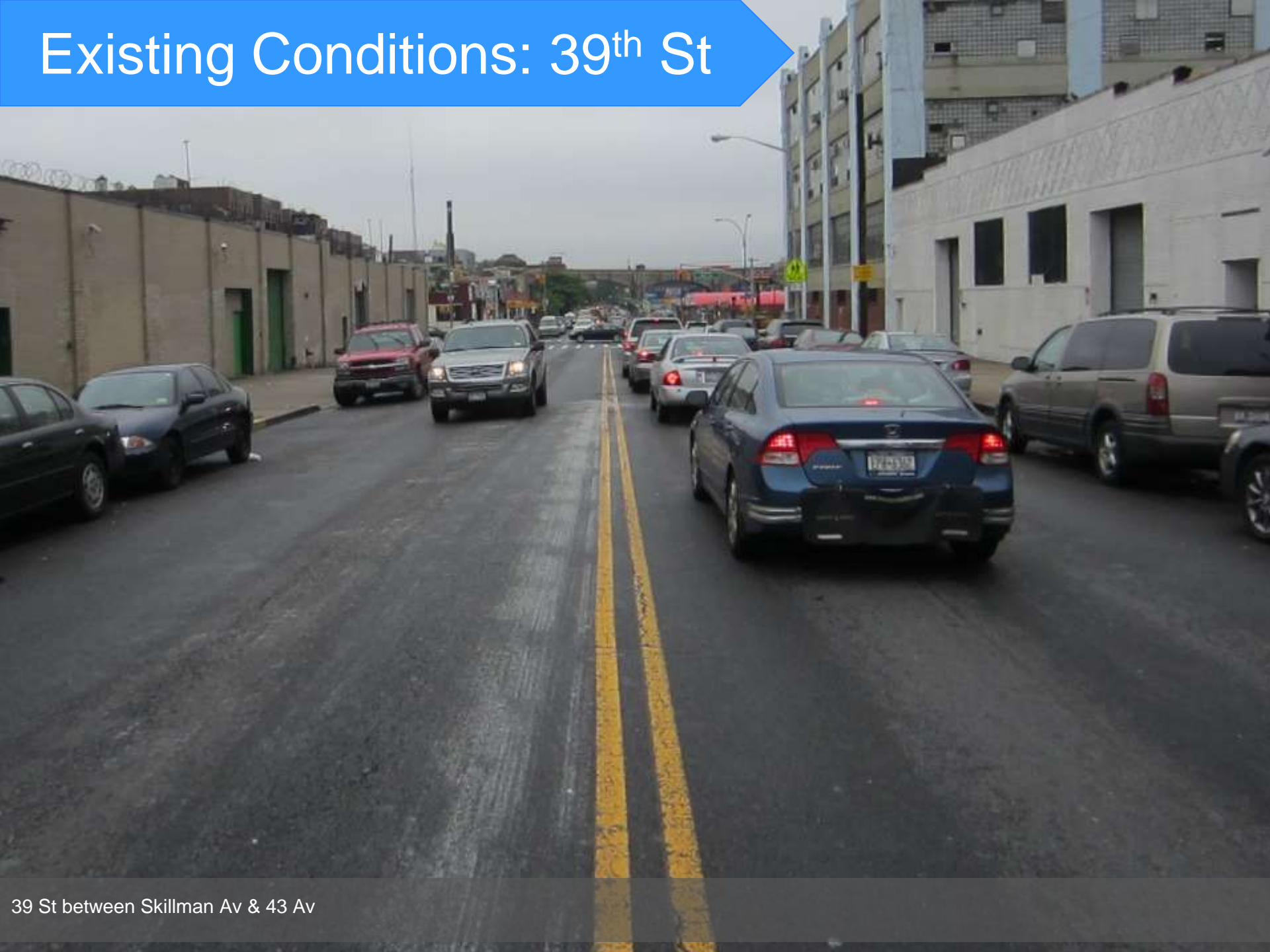


# Proposed Routes: 39<sup>th</sup> St



-  Project Route
-  Existing On-Street Bicycle Facility
-  CB 2 Boundaries

# Existing Conditions: 39<sup>th</sup> St





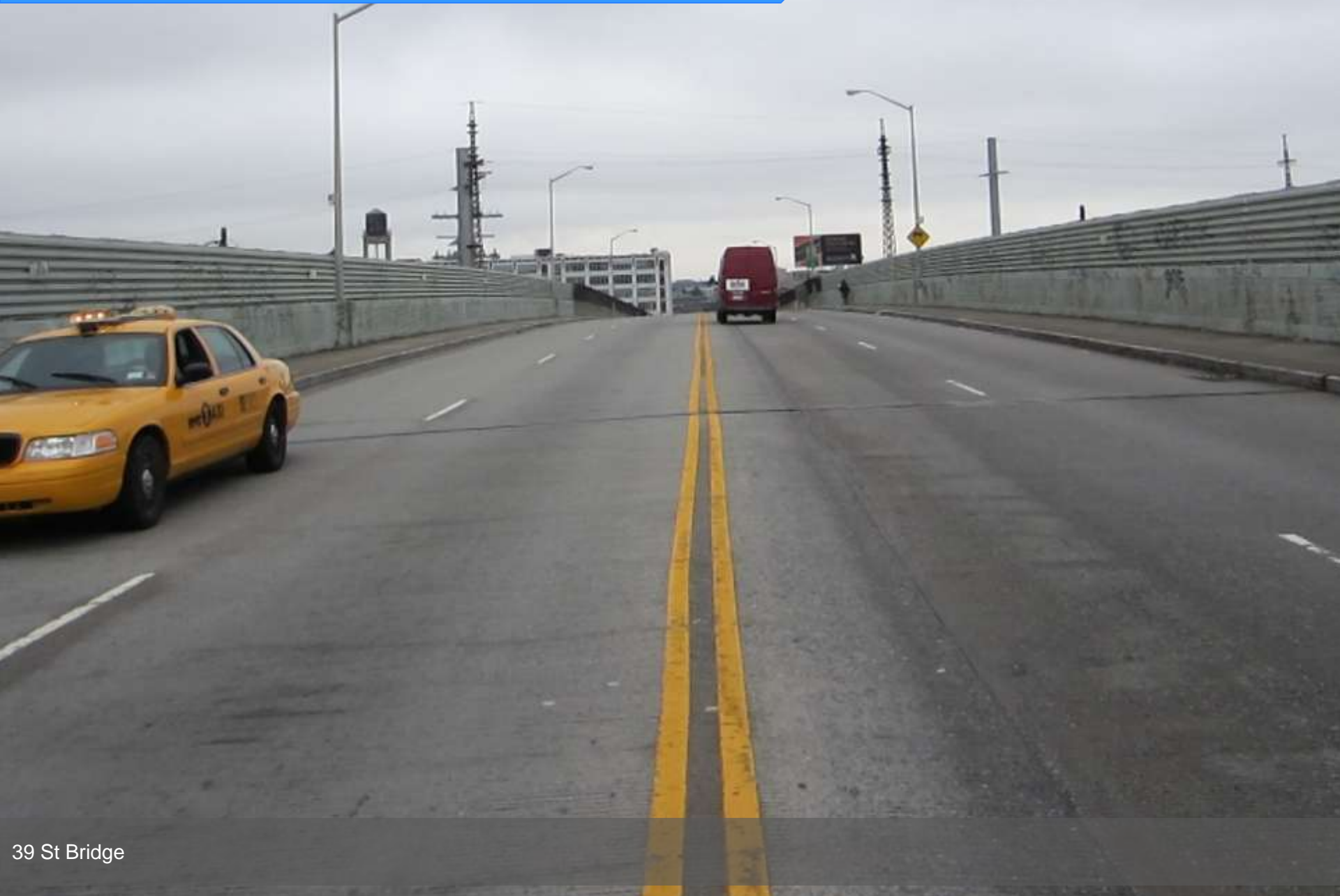
# Proposed Facilities: 39<sup>th</sup> St

Shared Lane



Proposed for 39 St between 50<sup>th</sup> Av and Skillman Av

# Existing Conditions: 39<sup>th</sup> St





# Proposed Facilities: 39<sup>th</sup> St

Buffered Bike Lane



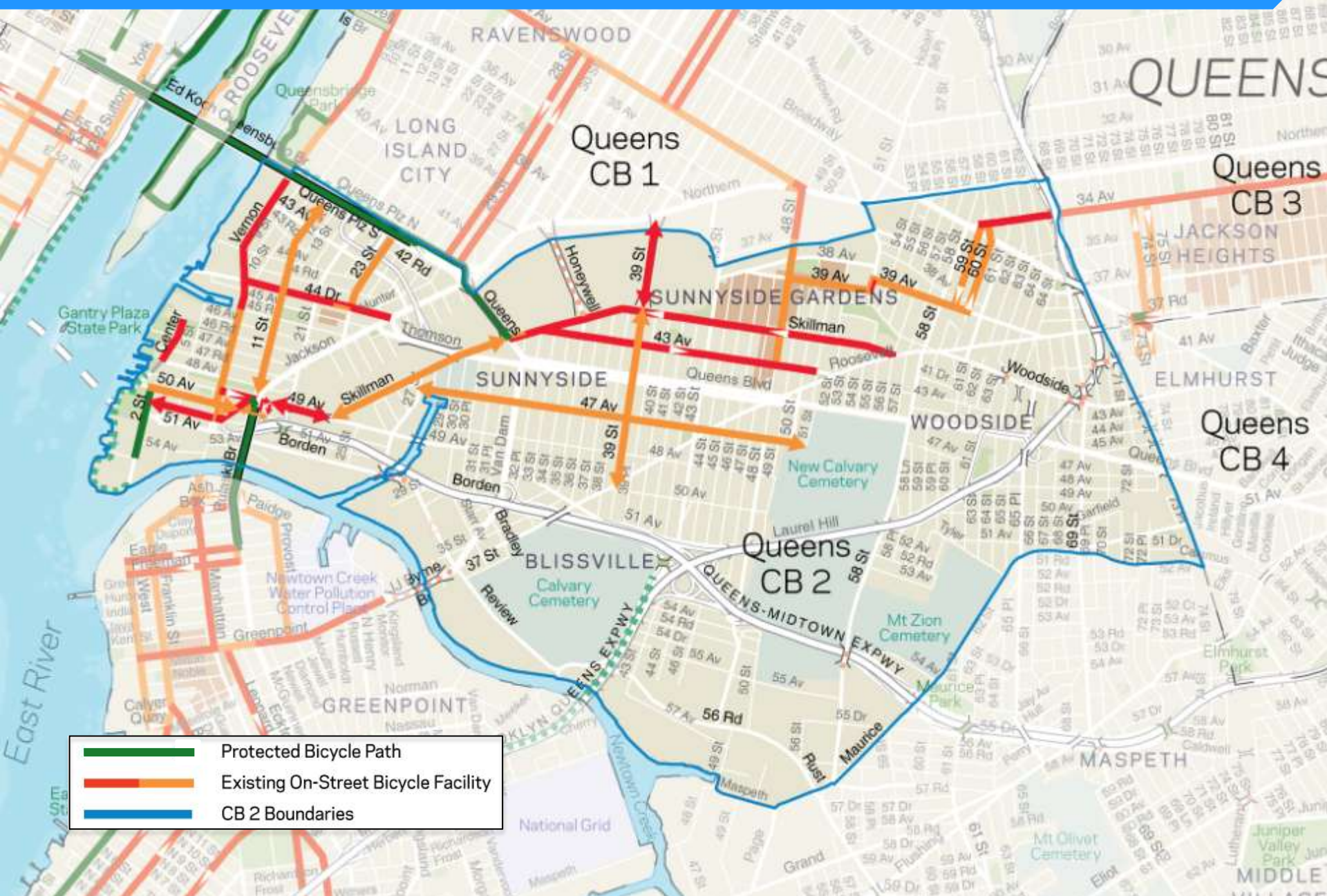
Proposed for 39 St Bridge

# Summary of Plans

Route	Street Limits	Enhanced Shared Bike Lane	Shared Bike Lane	Bike Lane	Buffered Bike Lane
<b>11<sup>th</sup> St</b>	44 <sup>th</sup> Dr to 49 <sup>th</sup> Av	X			
	44 <sup>th</sup> Dr to Queens Plaza South		X		
<b>50<sup>th</sup> Av</b>	11 <sup>th</sup> Pl to 2 <sup>nd</sup> St		X		
<b>51<sup>st</sup> Av</b>	Vernon Blvd to 2 St			X	
<b>Pulaski Bridge Connectors</b>	11 <sup>th</sup> St: Jackson Av to 50 <sup>th</sup> Av		X		
	11 <sup>th</sup> St: 49 <sup>th</sup> Av to 50 <sup>th</sup> Av			X	
	11 <sup>th</sup> Pl: 49 <sup>th</sup> Av to 50 <sup>th</sup> Av			X	
<b>49<sup>th</sup> Av</b>	Pulaski Bridge to 21 <sup>st</sup> St			X	X
	49 <sup>th</sup> Av Bridge			X	
<b>Skillman Av</b>	49 <sup>th</sup> Av to Queens Blvd		X		
<b>47<sup>th</sup> Av</b>	Skillman Av to 51 St		X		
<b>39<sup>th</sup> St</b>	50 <sup>th</sup> Av to Skillman Av		X		
	39 <sup>th</sup> Av Bridge				X



# Routes Recommended for 2014 Implementation



# Summary of Benefits

- Organizes street traffic in CB2
- Provides east-west bicycle connections to Sunnyside and the East River Ferry
- Provides north-south bicycle connections to Queensboro Bridge, Pulaski Bridge, and Astoria
- Two parking spaces removed on Skillman Av



Questions?

Thank  
You